

CRAB MEETING

2012

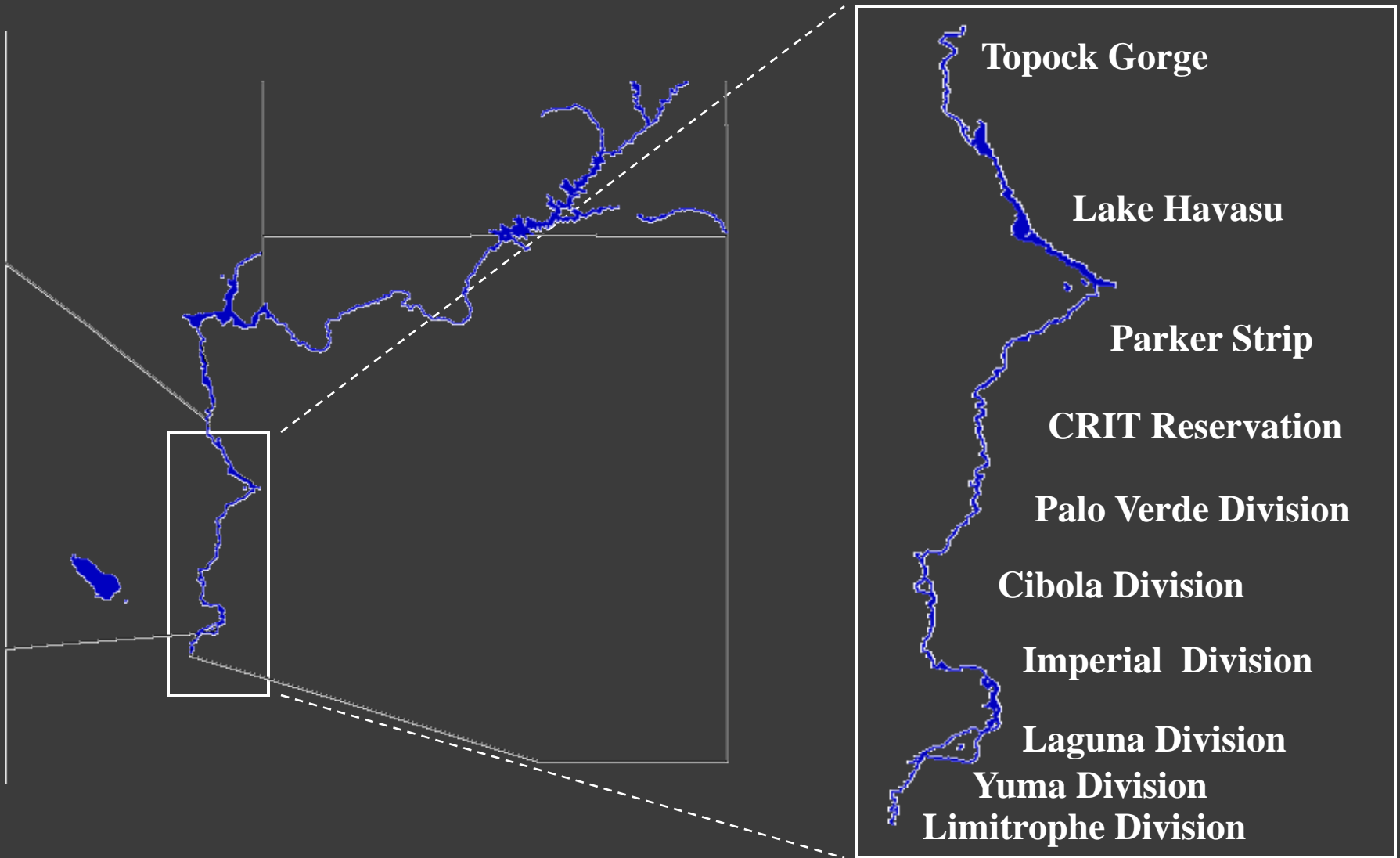
Annual Fisheries Population Monitoring - 2011



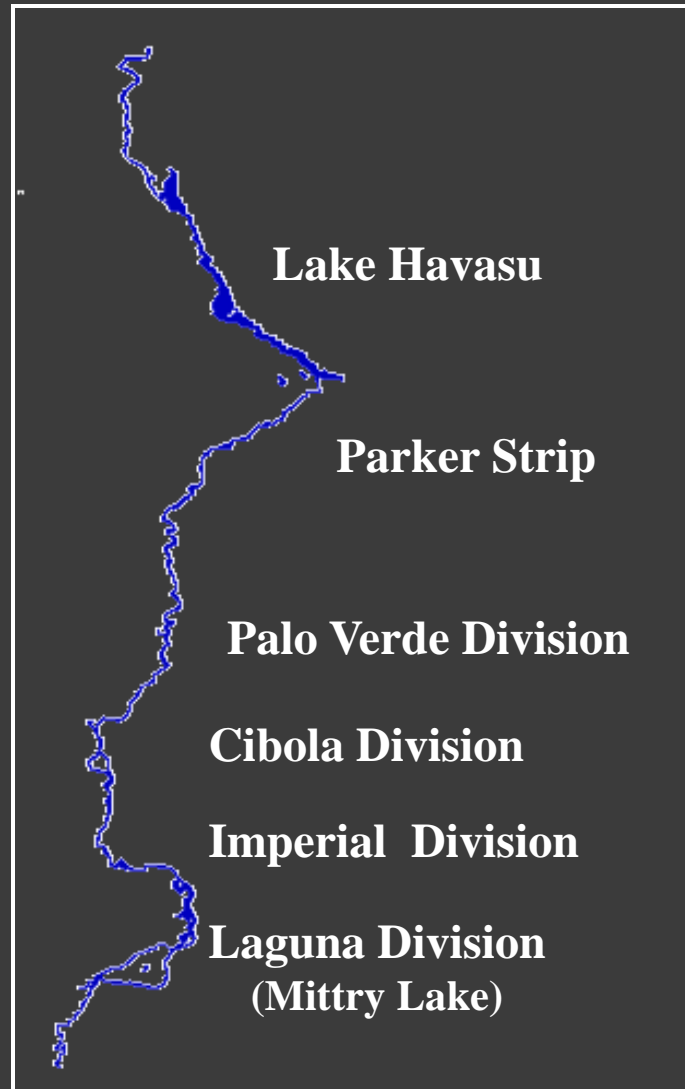
*Arizona Game and Fish Department
Region IV Fisheries Program, Yuma
Russ Engel and Mark Brown*



Region IV Colorado River Waters

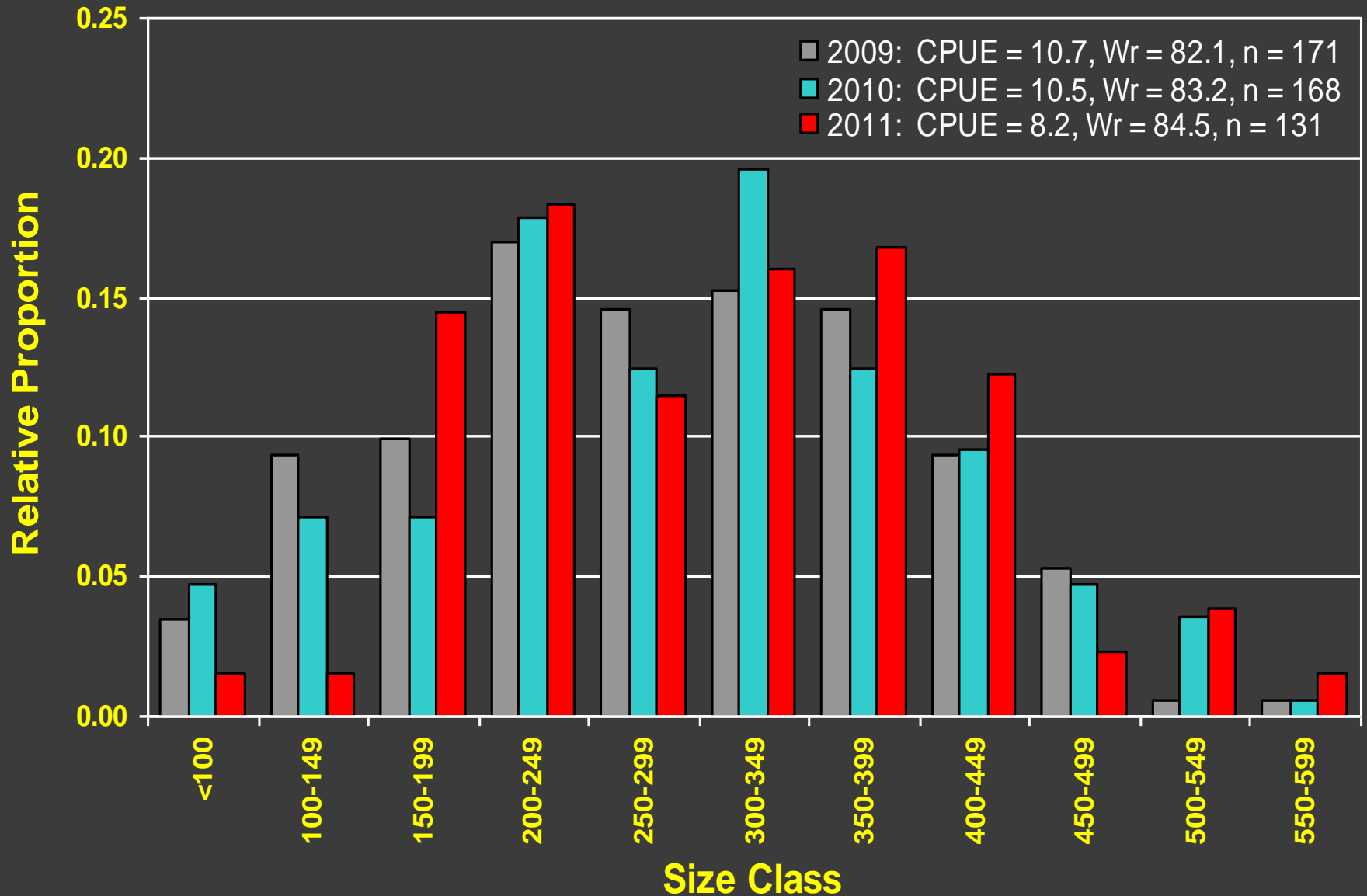


River Sections Surveyed in 2011

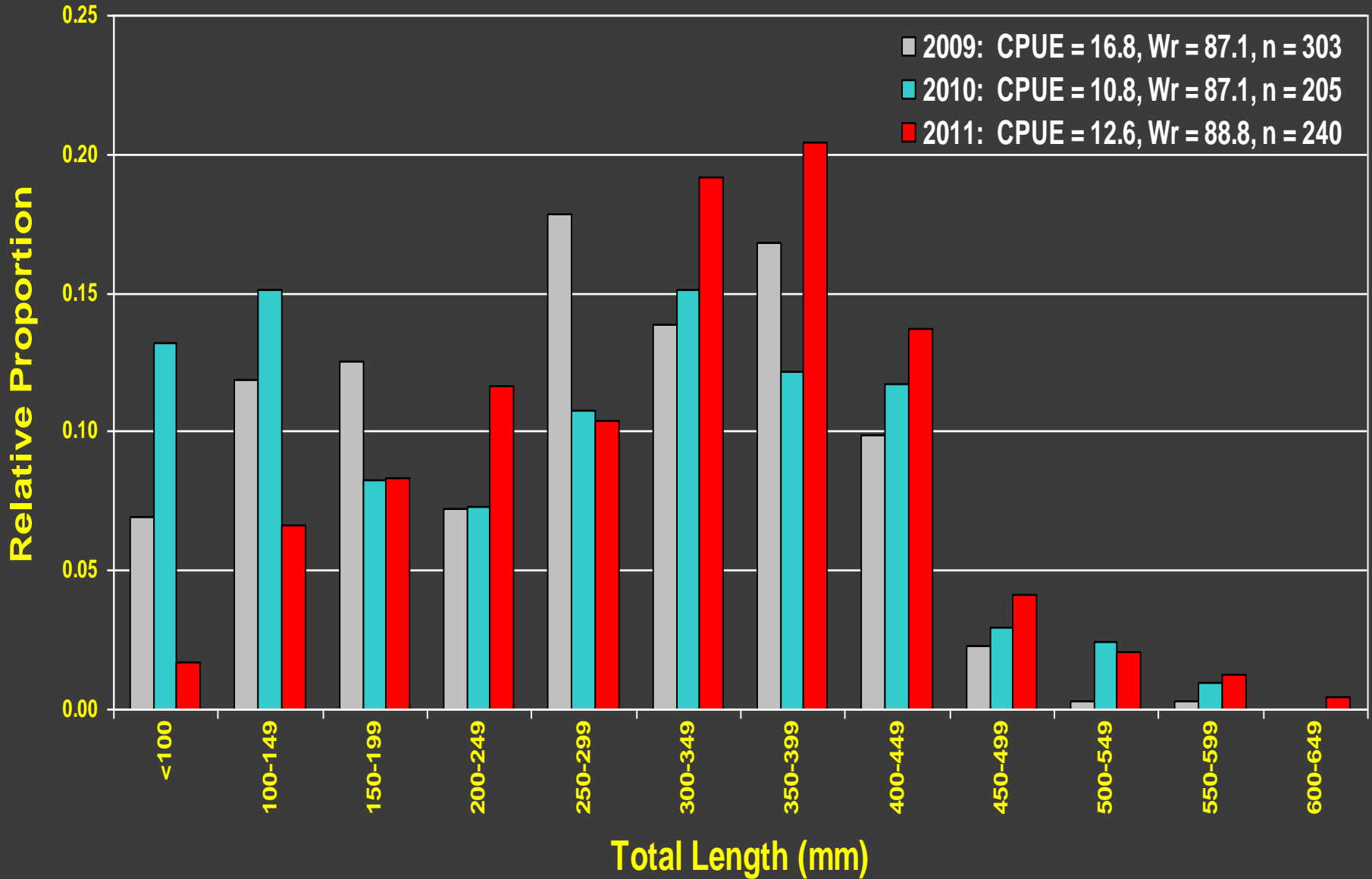


Laguna Division (Mittry Lake)

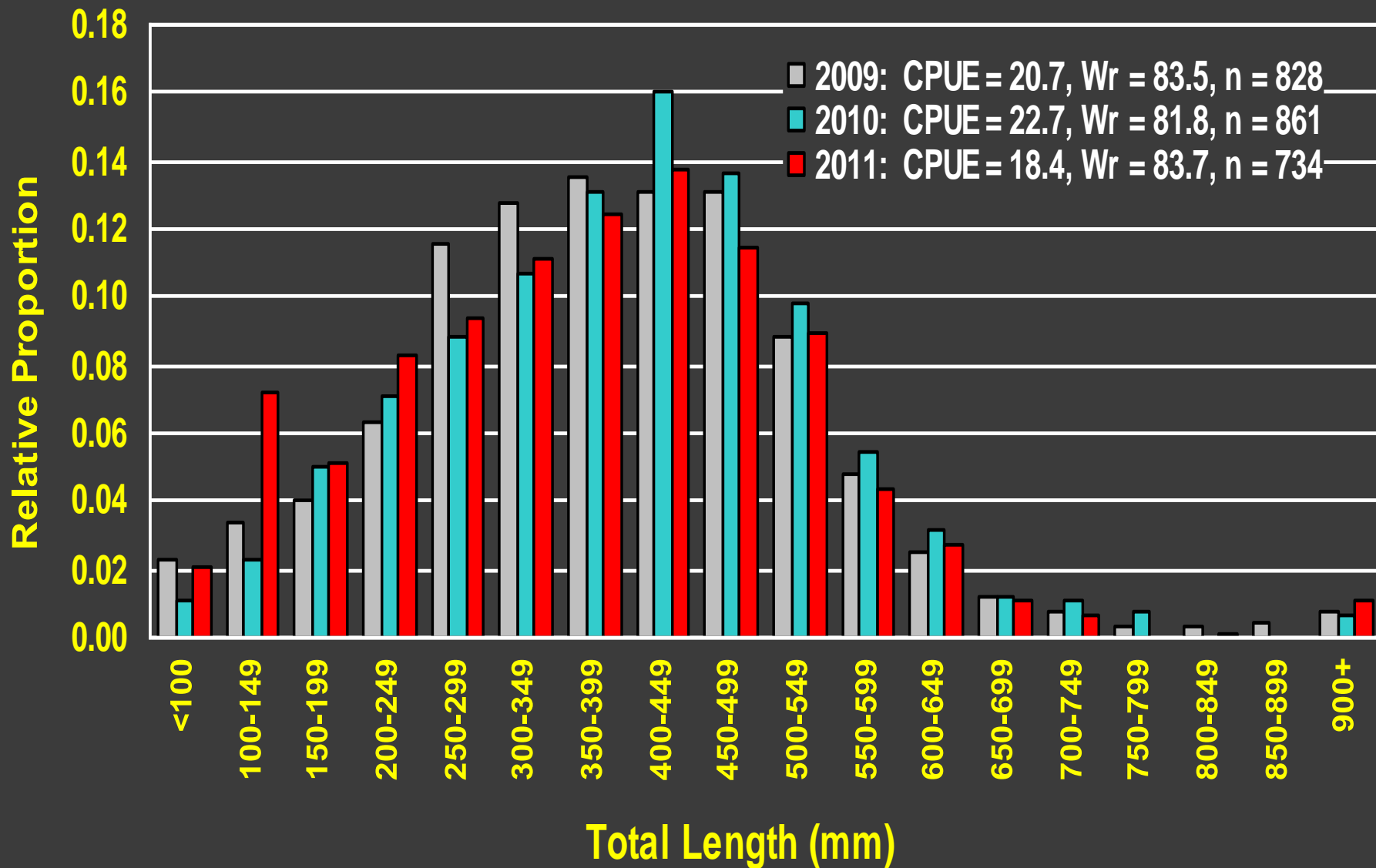
Largemouth Bass Size Class Distribution



Imperial Division Backwaters Largemouth Bass Size Class Distribution



Imperial Division Flathead Catfish Size Class Distribution

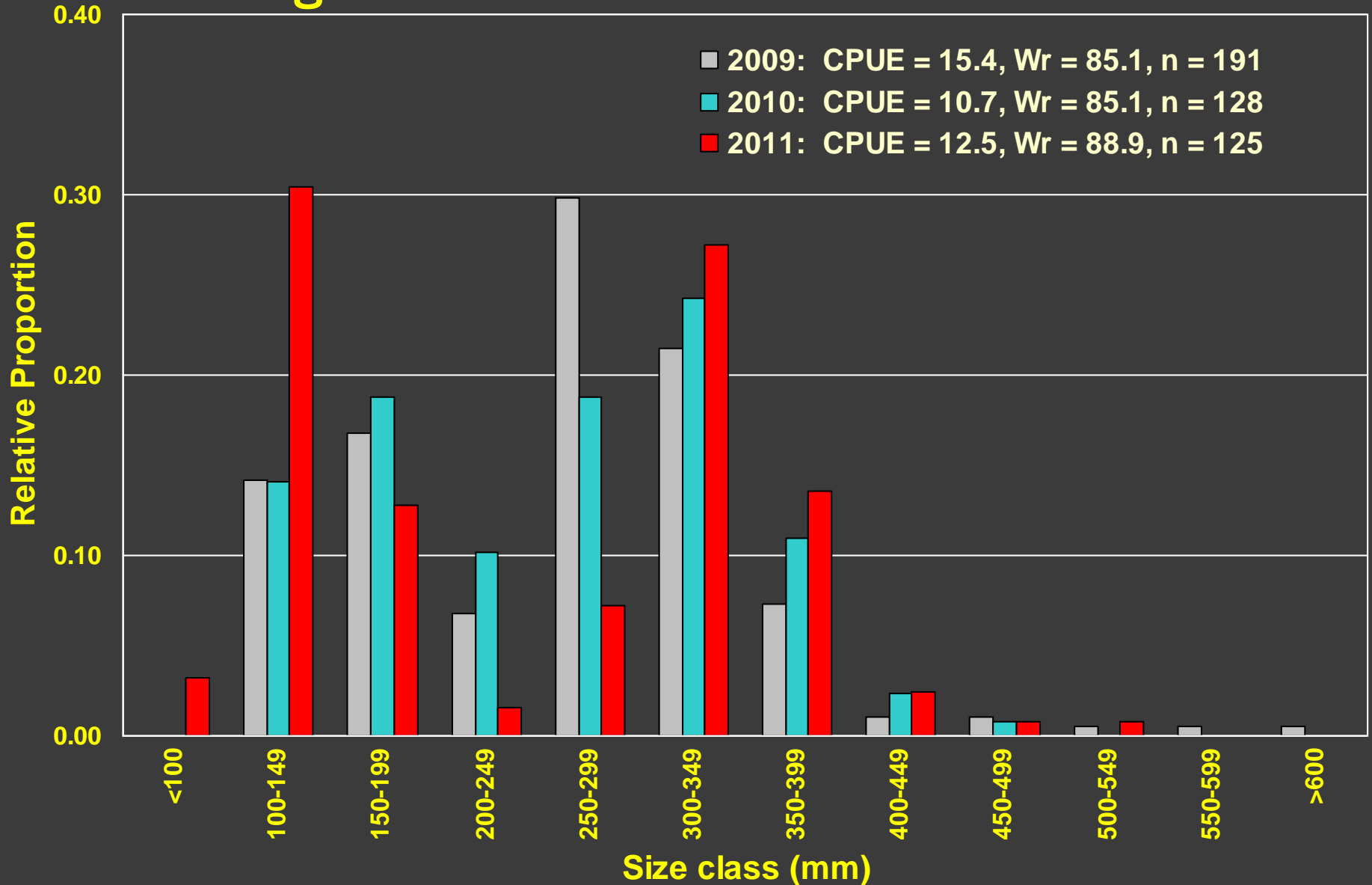


Imperial Division Prize Sportfish

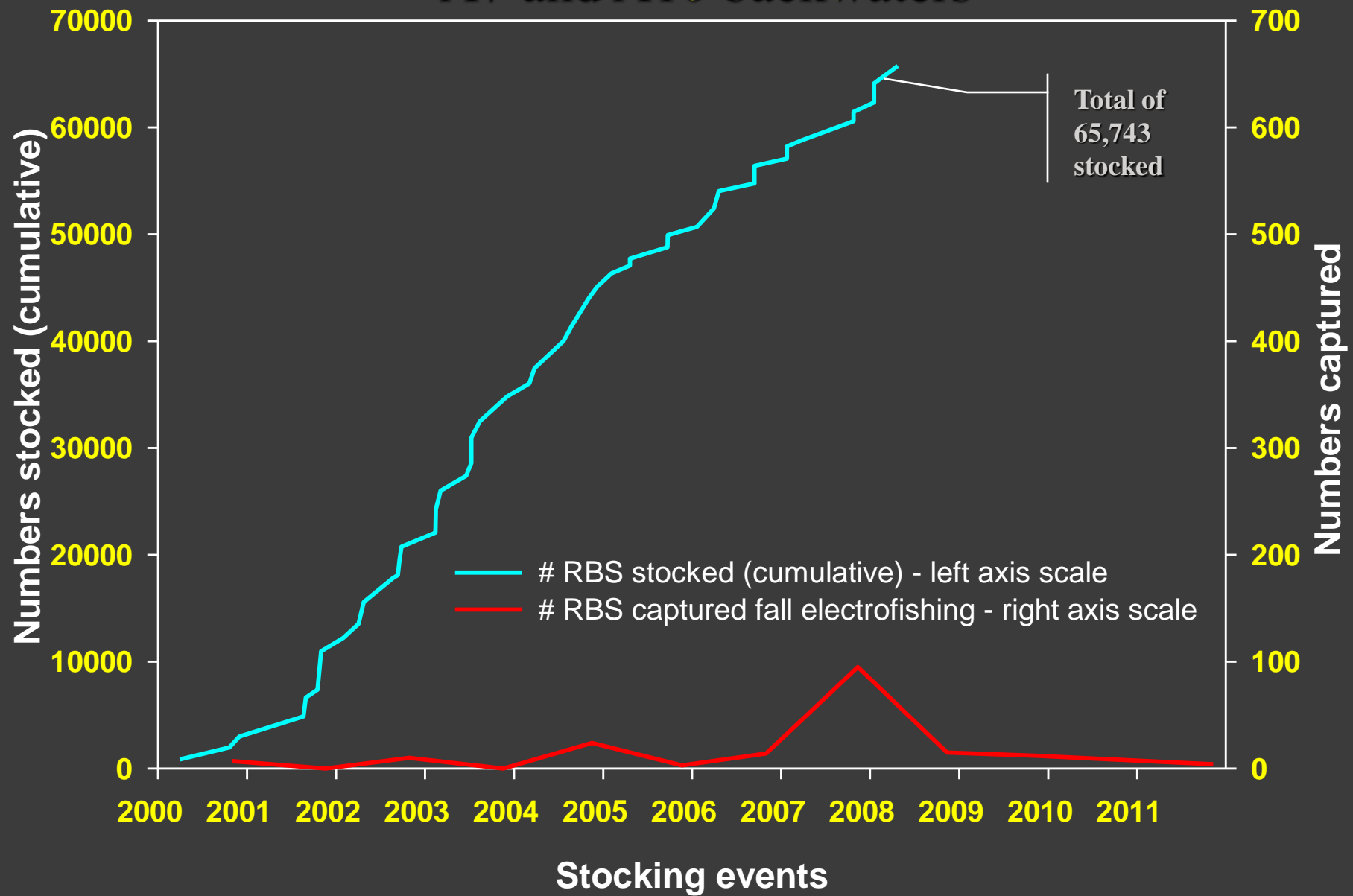


Palo Verde Division (A-7 and A-10 Backwaters)

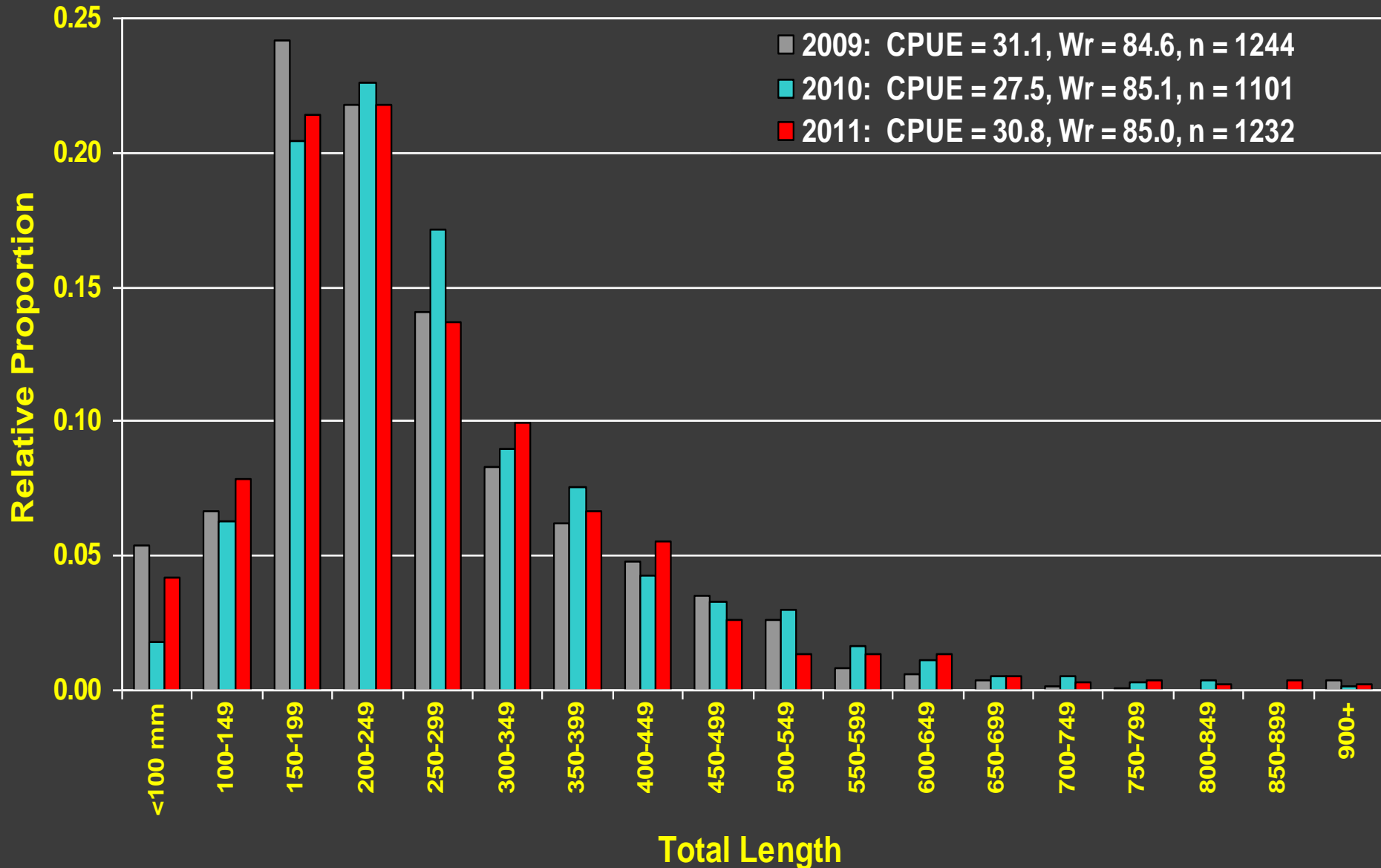
Largemouth Bass Size Class Distribution



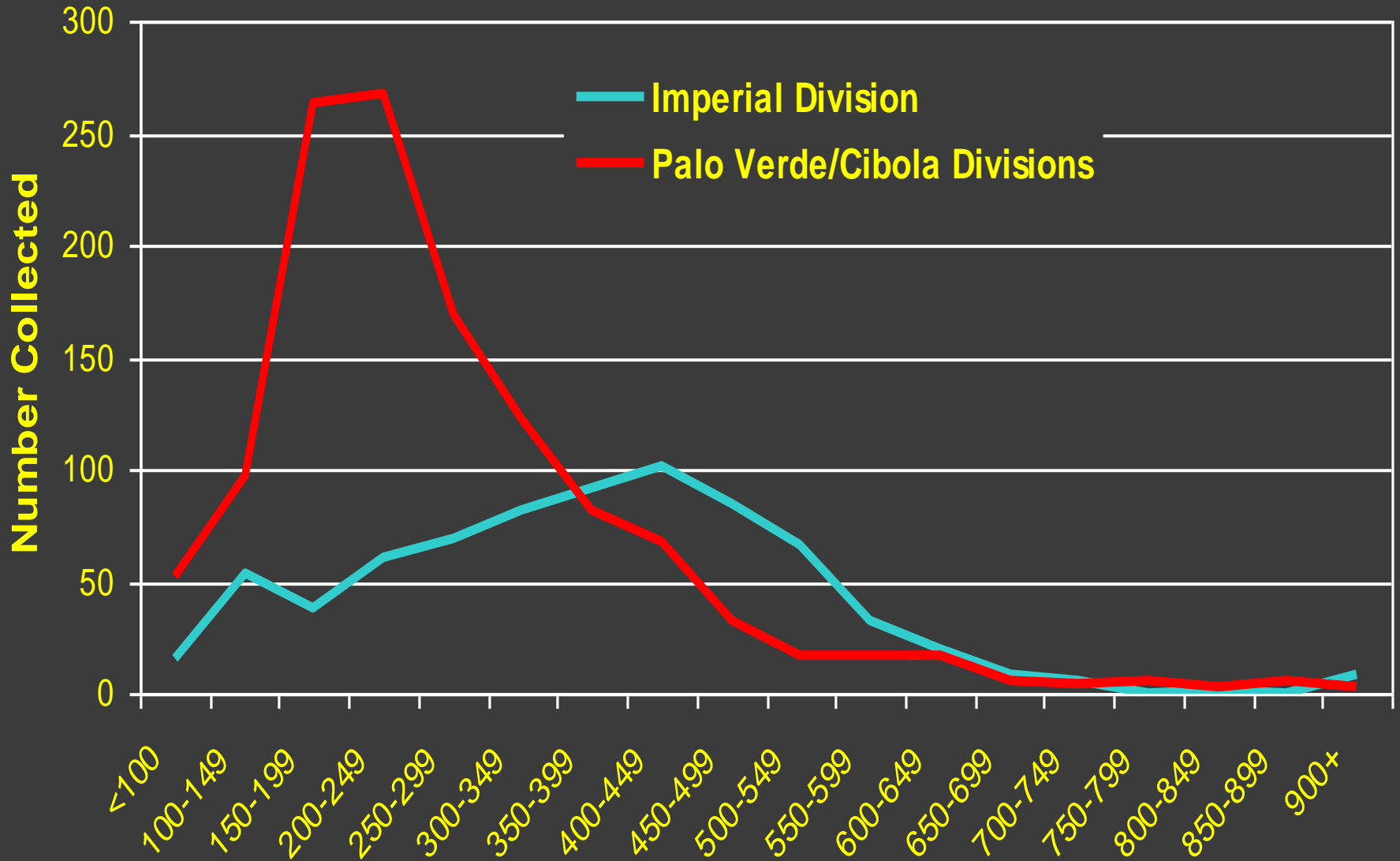
Razorback sucker stocking and recapture history, A7 and A10 backwaters



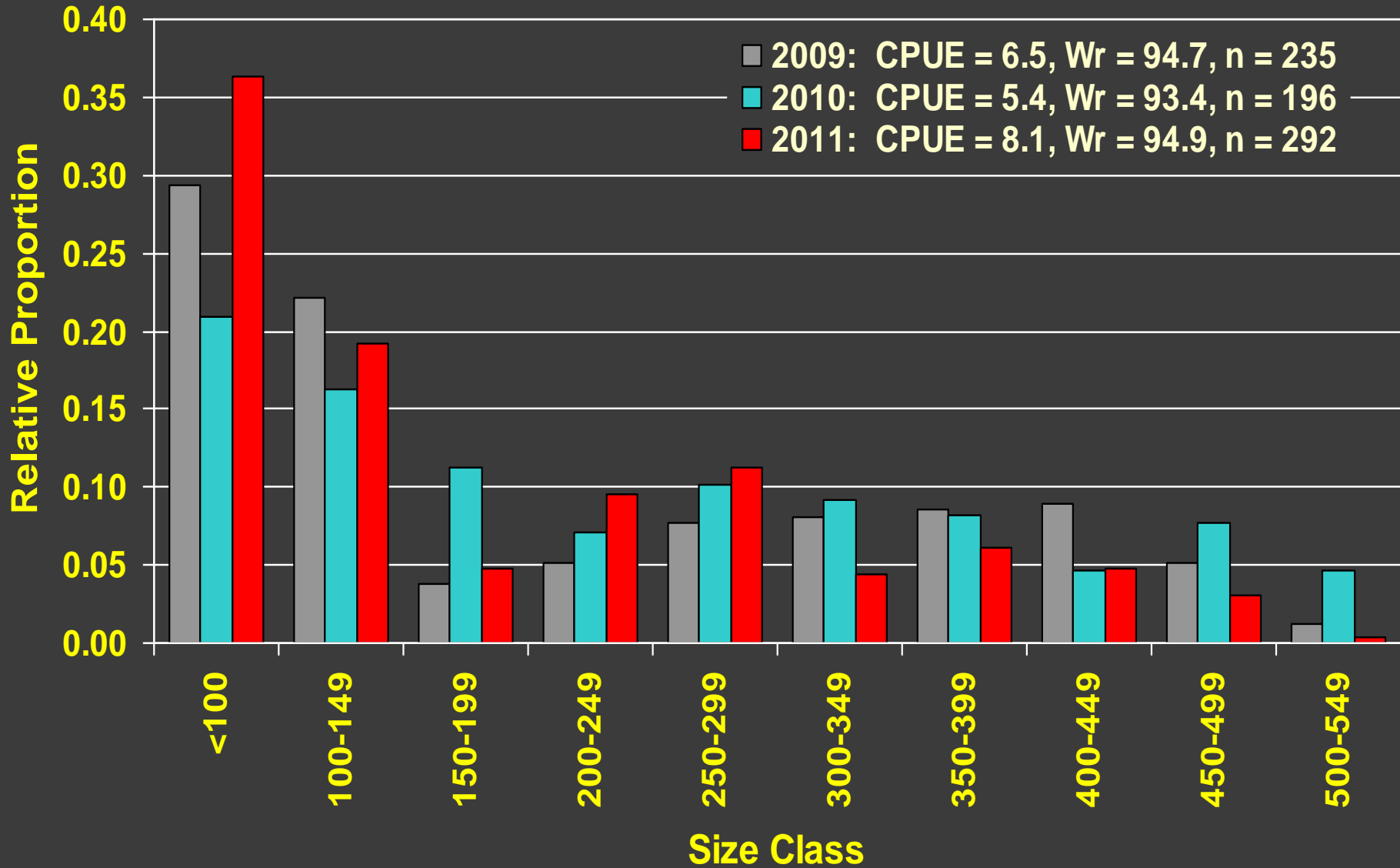
Cibola and Palo Verde Divisions Flathead Catfish Size Class Distribution



Flathead Catfish Size-Class Distribution (2011)

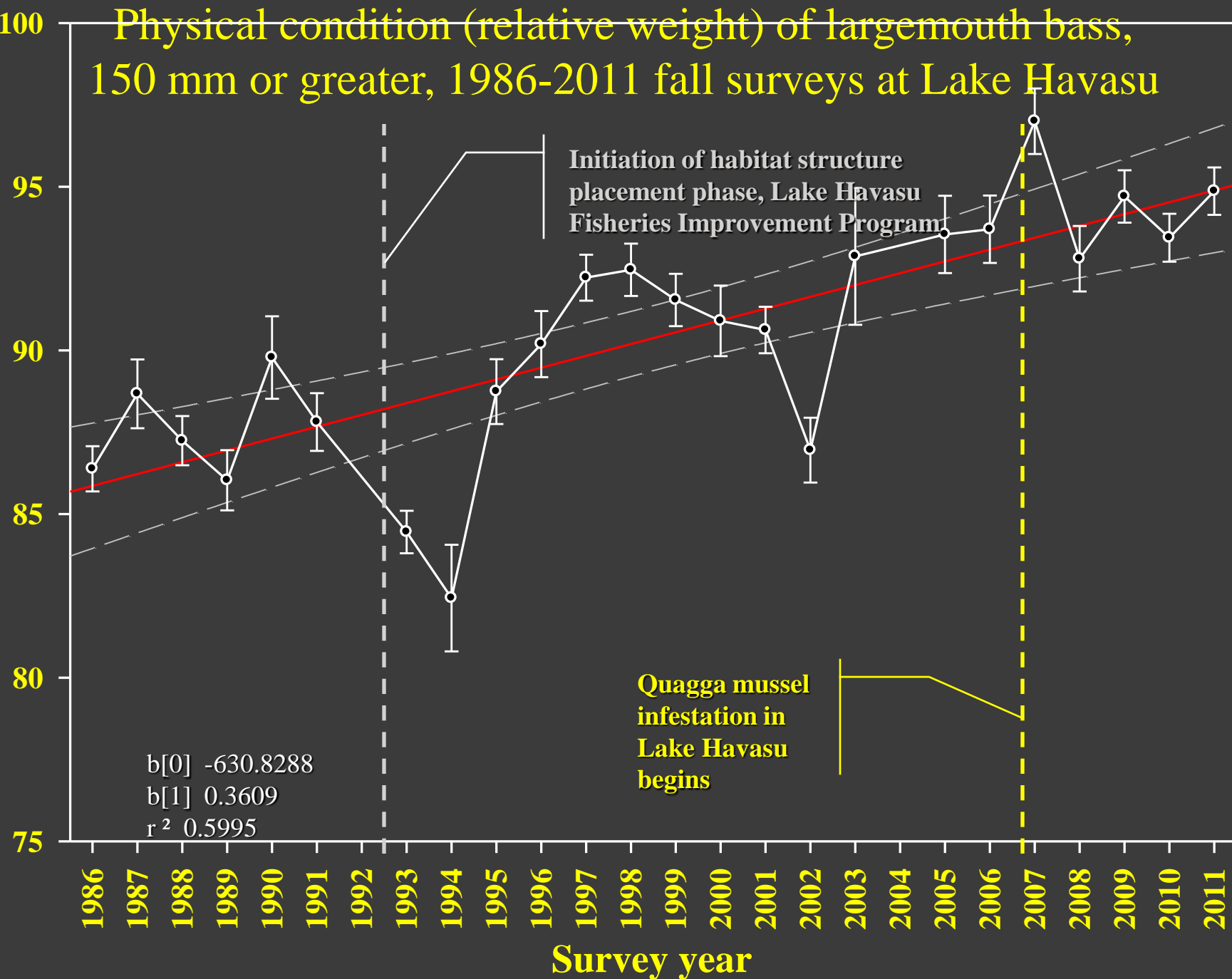


Lake Havasu Size-Class Distribution, Largemouth Bass

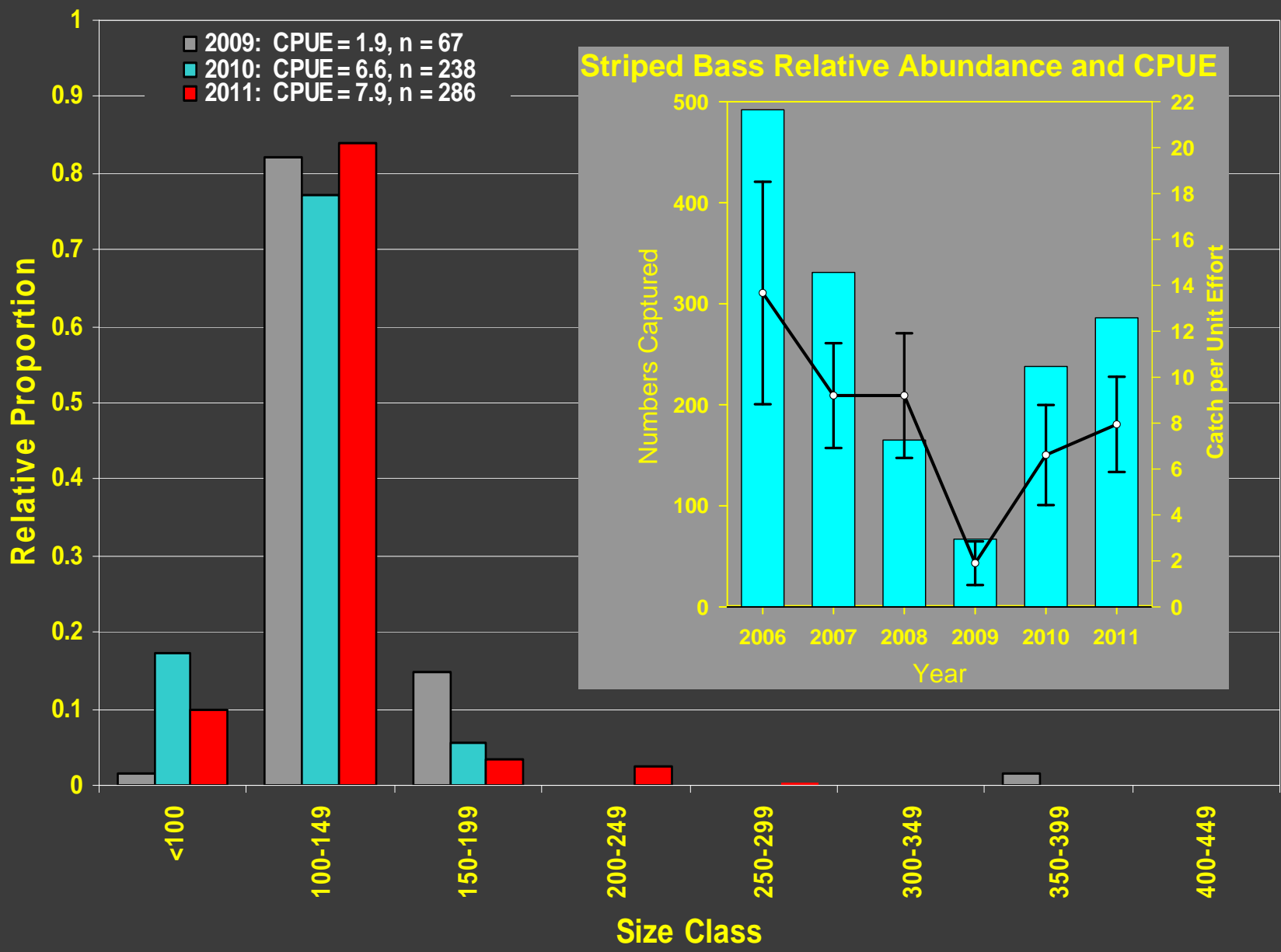


Physical condition (relative weight) of largemouth bass, 150 mm or greater, 1986-2011 fall surveys at Lake Havasu

Average relative weight (W_r)

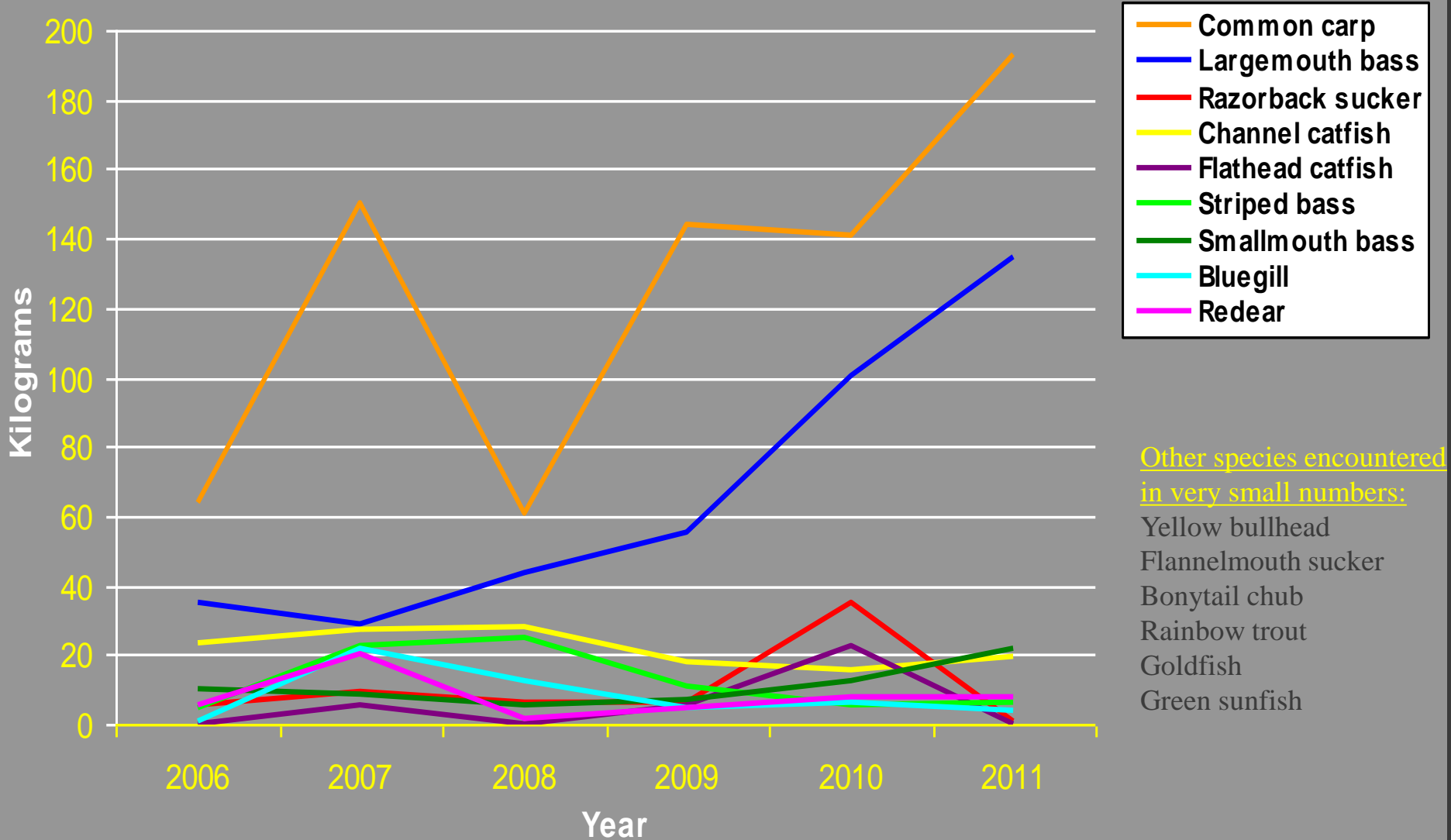


Lake Havasu Size-Class Distribution, Striped bass, electrofishing



Lake Havasu Trammel-Netting

Relative Species Biomass 2006-2011



Lake Havasu, World Record Redear, 2011



Photo courtesy of John Galbraith/BassTackleMaster.com

5.55-lb quagga-fed redeer sunfish from Lake Havasu

Discussion?



(Tench rhabdovirus suspected...)