

# Lower Colorado River Multi-Species Conservation Program



*Balancing Resource Use and Conservation*

## Yuma East Wetlands

Yuma East Wetlands is located along the Colorado River near Yuma, Arizona. A partnership – which includes the Quechan Indian Tribe, City of Yuma, Yuma Crossing National Heritage Area, Arizona Game and Fish Commission, multiple federal agencies and local farmers – is working to eventually restore up to 1,400 acres of critical wildlife habitat in this area.



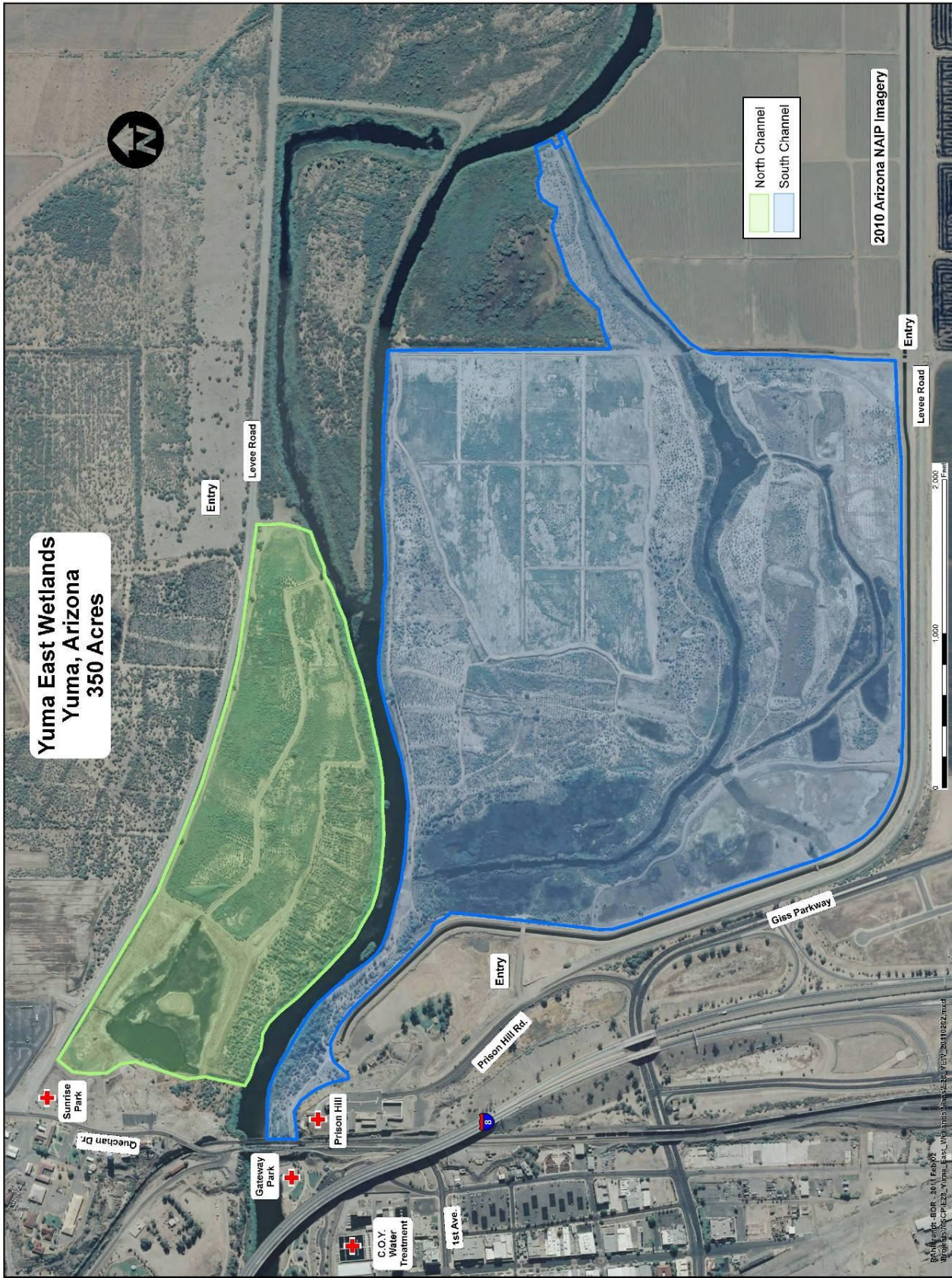
By excavating and dredging backwaters and choked river channels, the partners have re-established natural water flows through a degraded wetland and marsh,

and revegetated a 350-acre area with riparian plants. The Lower Colorado River Multi-Species Conservation Program has partnered with the Tribe, City of Yuma, and Heritage to cost-share the long term management and maintenance of habitat within this 350 acre site.

The project is restoring historic river channels, and establishing wetland, riparian and upland vegetation habitat suitable for multiple wildlife species including the Yuma clapper rail and migratory birds such as the southwestern willow flycatcher. The acres of native trees and wetlands at the site now attract an abundance of birds and other wildlife in an area once overgrown with invasive plants such as saltcedar and phragmites. The wetlands also provide opportunities for low impact recreation for residents and winter visitors alike. Canoeing, bird watching, fishing and hiking can be enjoyed year-round at this model restoration project.

Various restoration techniques are being used and include; exotic plant removal, drip and flood irrigation, seeding, planting of poles and willow bundles. Wildlife monitoring will determine the specific wildlife species that are utilizing the marsh and wetlands. The site also serves as a thriving example of successful collaboration in ecosystem restoration, providing invaluable lessons and outreach for other communities who wish to duplicate the efforts.

For more information and documentation about this activity, visit the LCR MSCP website at: [www.lcrmsep.gov](http://www.lcrmsep.gov)



Revised March 2011