

Lower Colorado River Multi-Species Conservation Program



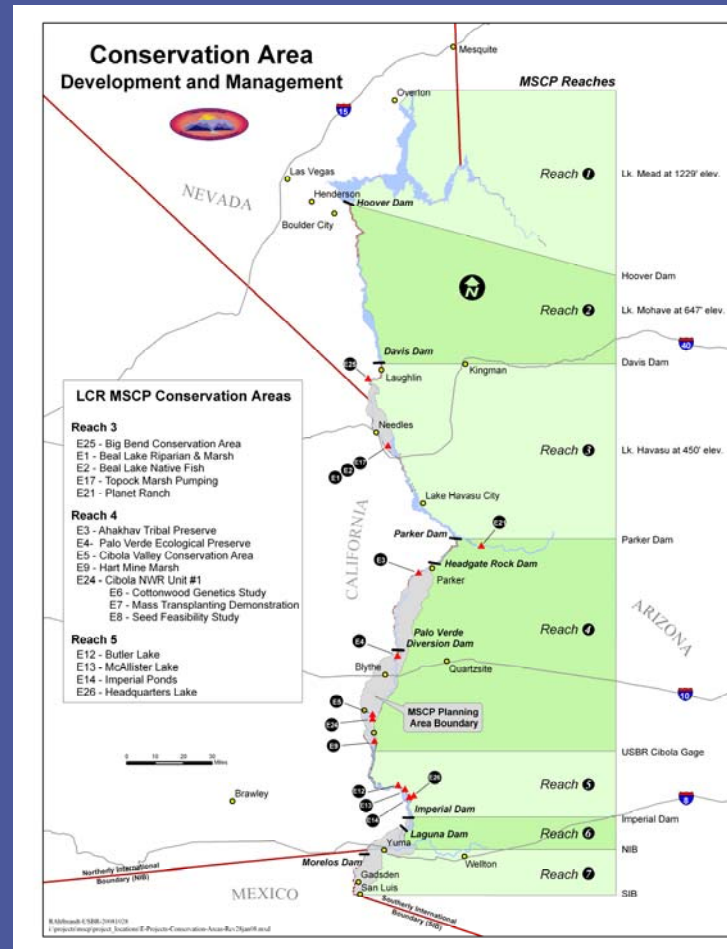
Balancing Resource Use and Conservation

Conservation Area Development and Management

Southern Nevada Water Authority
Las Vegas, Nevada
April 23, 2008



LCR MSCP Conservation Areas Current & Planned



LCR MSCP Habitat Creation Goals

- 5,490 acres of cottonwood-willow
- 1,320 acres of honey mesquite
- 512 acres of marsh
- 360 acres of backwater

SIA Commitments: FY07 Establishment

- Palo Verde Ecological Reserve (PVER)
 - 80 ac, CW land cover type established
- Cibola Valley Conservation Area (CVCA)
 - 100 ac, CW land cover type established
- Imperial Ponds Conservation Area (IPCA)
 - 80 ac backwater established
 - Fulfillment of SIA backwater commitment

Site Identification/Selection

- Draft Guidelines for Conservation Area Selection
 - Cibola NWR Unit #1 added (up to 900 ac CW)
- Backwaters
 - Final Model Evaluation Report updated guidelines for backwaters
 - Completion (Step 1) of Reach 5 & 6 backwater inventory

Research/Demonstration Projects

- Beal Lake Riparian Restoration
- Ahakav Tribal Preserve
- Seed Feasibility

Research/Demonstration Projects: Beal Lake Riparian Restoration

- Managed: 107 acres cottonwood-willow
- Full time 2-yr term employee funded
- Water retention features installed



Research/Demonstration Projects: Ahakav Tribal Preserve

- Managed: 154 acres cottonwood/mesquite
- Cleared/leveled 58 acres fields
- Constructed 2,000 ft irrigation canal and pump platform
- Surveyed 30 acres (CRIT 10/11)



Research/Demonstration Projects: Seed Feasibility

- Viability of all species (stored frozen) >80%
- Monthly monitoring continues through 2 yr study
- Gooding/coyote willow- low establishment



Development/Management (Current)

- Current
 - PVER – Phase 1
 - CVCA
 - Imperial Ponds
- Planning/Design
 - Cibola NWR Unit # 1
 - Hart Mine Marsh

Palo Verde Ecological Reserve

- Established: 80 ac
CW land cover
- Managed: 31 ac
native plant nursery



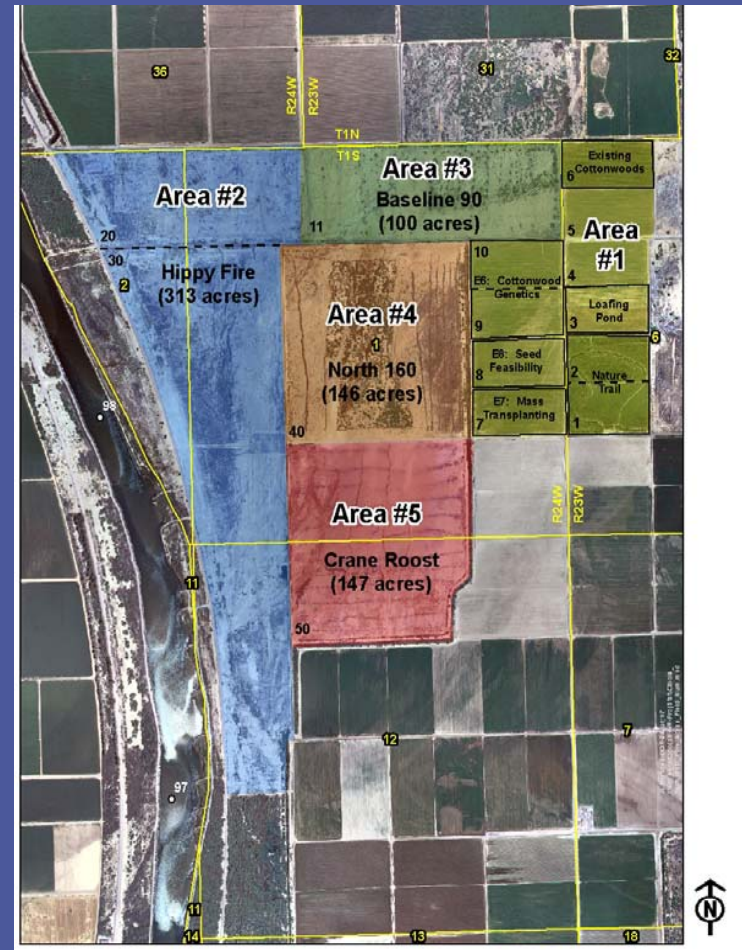
Cibola Valley Conservation Area

- Established: 100 ac CW land cover (Phase 3)
- Managed:
 - 20 ac native plant nursery (Phase 1)
 - 64 ac CW land cover (Phase 1)



Cibola NWR Unit #1

- Up to 900 acres of cottonwood-willow land cover
- Planting Phase I in FY09



Hart Mine Marsh

- 150 acres of marsh
- Construction scheduled for FY09-FY10



Imperial Ponds

October 2006



Imperial Ponds

April 2007

