



Daily Weather Maps

FEBRUARY 24, 2003 - MARCH 2, 2003

The following charts are the principal charts of the former National Weather Service publication, "Daily Weather Map." They are the Surface Weather Map, the 500-Millibar Height Contours chart, the Highest and Lowest Temperatures chart, and the Precipitation Areas and Amounts chart. All charts are derived from the operational weather maps prepared at the National Centers for Environmental Prediction, Hydrometeorological Prediction Center, National Weather Service. The symbols on the Surface Weather Map and the 500-Millibar Height contours are standard international symbols.

The Surface Weather Map shows station data and the analysis for 7:00 a.m. EST. Areas of precipitation are indicated by shading. The weather reports displayed here are only a fraction of those on which the analyses are based. Occasional apparent discrepancies between the printed station data and the analyses result from the absence of station reports not included here because of a lack of space.

The 500-Millibar Height Contours chart shows height contours (solid lines), temperatures (dashed lines) and winds (arrows) at the 500-Millibar pressure level at 7:00 a.m. EST. The height contours show the height of the 500-millibar pressure level in dekameters above sea level and isotherms, the lines of constant temperature, are shown in degrees Celsius. Arrows show the wind direction and speed at the 500-Millibar level.

The Highest and Lowest Temperature chart shows the maximum temperature for a period from 7:00 a.m. EST the previous day through 1 a.m. EST and the minimum temperature for the period from 7:00 p.m. EST the previous day through 1 p.m. The maximum temperature is plotted above the station location and the minimum temperature is plotted below.

The Precipitation Areas and Amounts chart shows areas (shaded) that had precipitation during the 24 hours ending at 7:00 a.m. EST, with amounts to the nearest hundredth of an inch. "T" indicates a trace of precipitation.

The *Daily Weather Map* is published weekly by the U.S. Department of Commerce, National Oceanic and Atmospheric Administration (NOAA). NOAA and IMC are responsible for managing, printing, and distributing the bulletin. The contents may be reprinted freely, with proper credit.

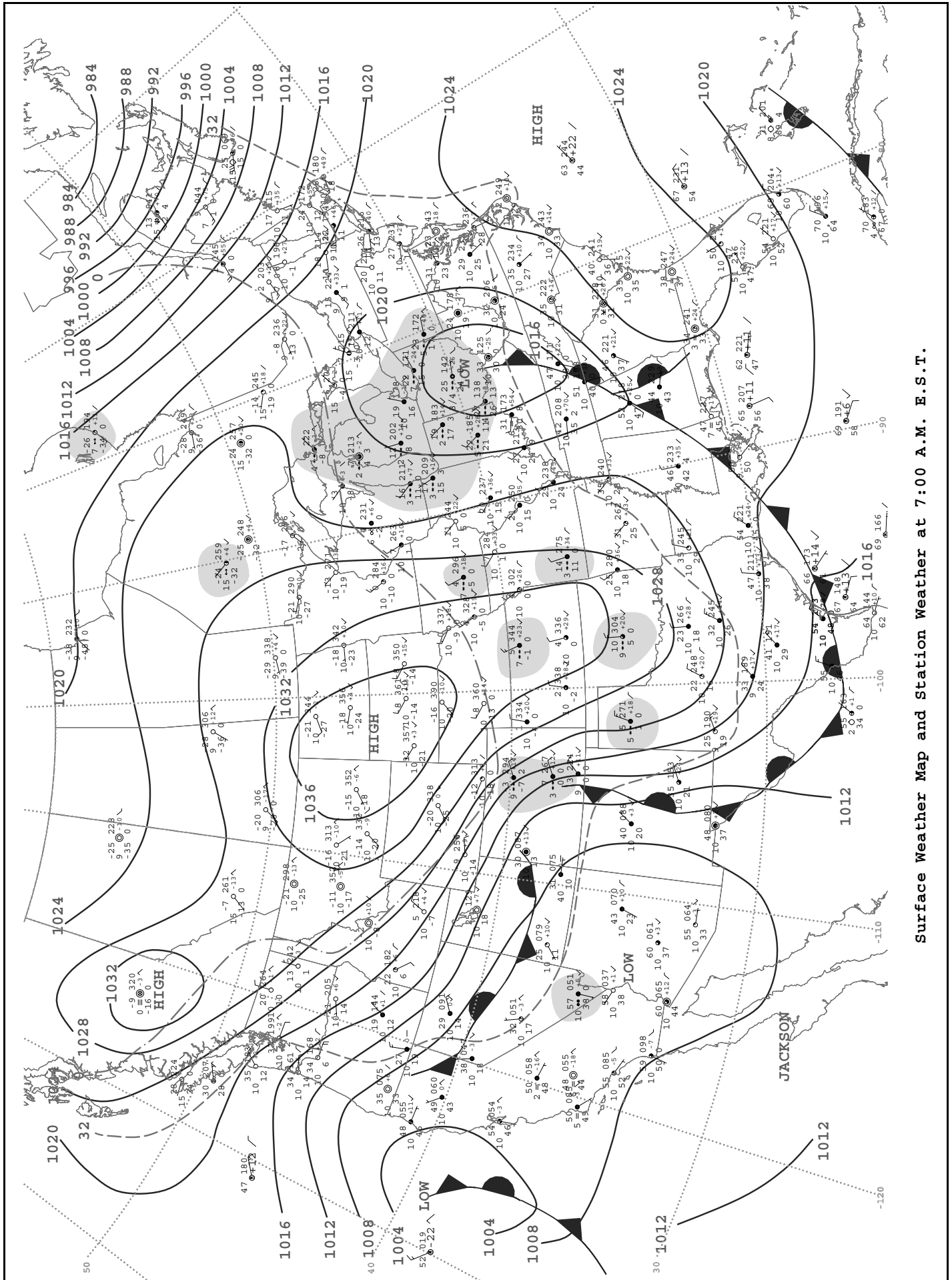
Annual subscriptions: Domestic and International subscriptions are \$75. Check and credit card (Visa, MasterCard, Discover, and American Express) payments are accepted. Payments (invoices) should be mailed to: **NNDC/NCDC, P.O. Box 70169, Chicago, IL 60673-0169**; or invoices faxed to: (304) 726-4409.

Send address changes to: **NCDC Subscription Services Center, 310 State Route 956, Building 300, Rocket Center, WV 26726**; call toll free: (866) 742-3322; TDD: (828) 271-4010; fax: (304) 726-4409; or E-mail: noaasubsvcs@imcww.com

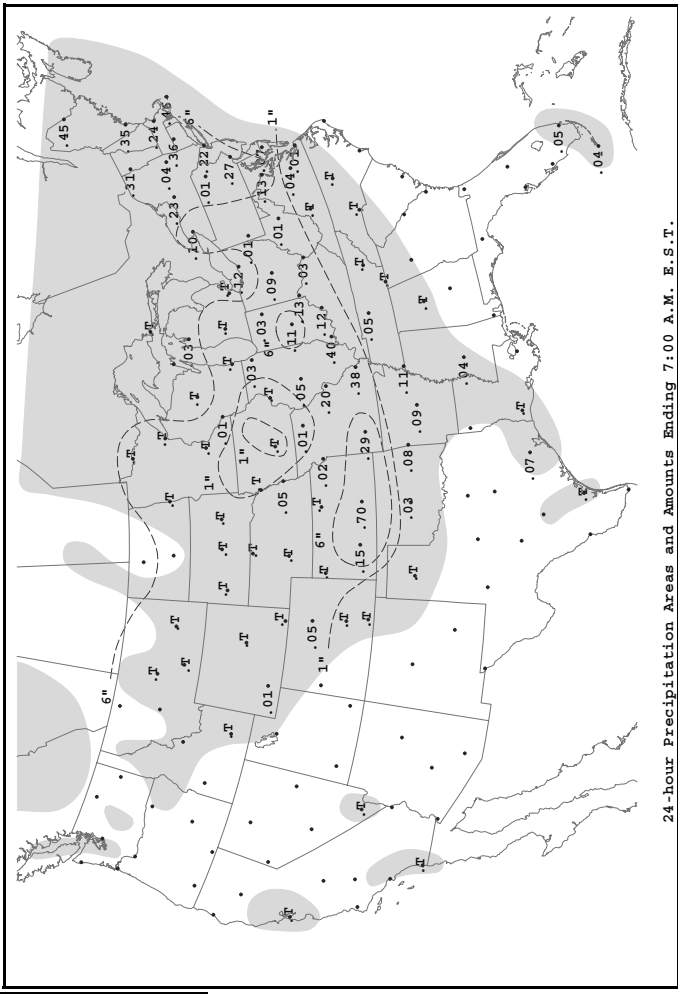
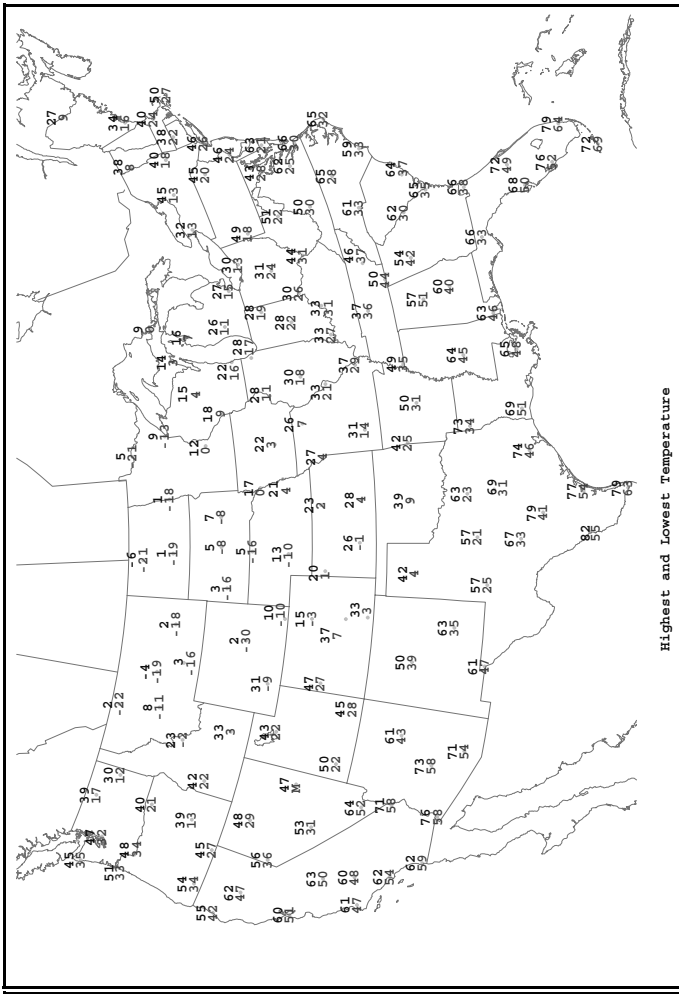
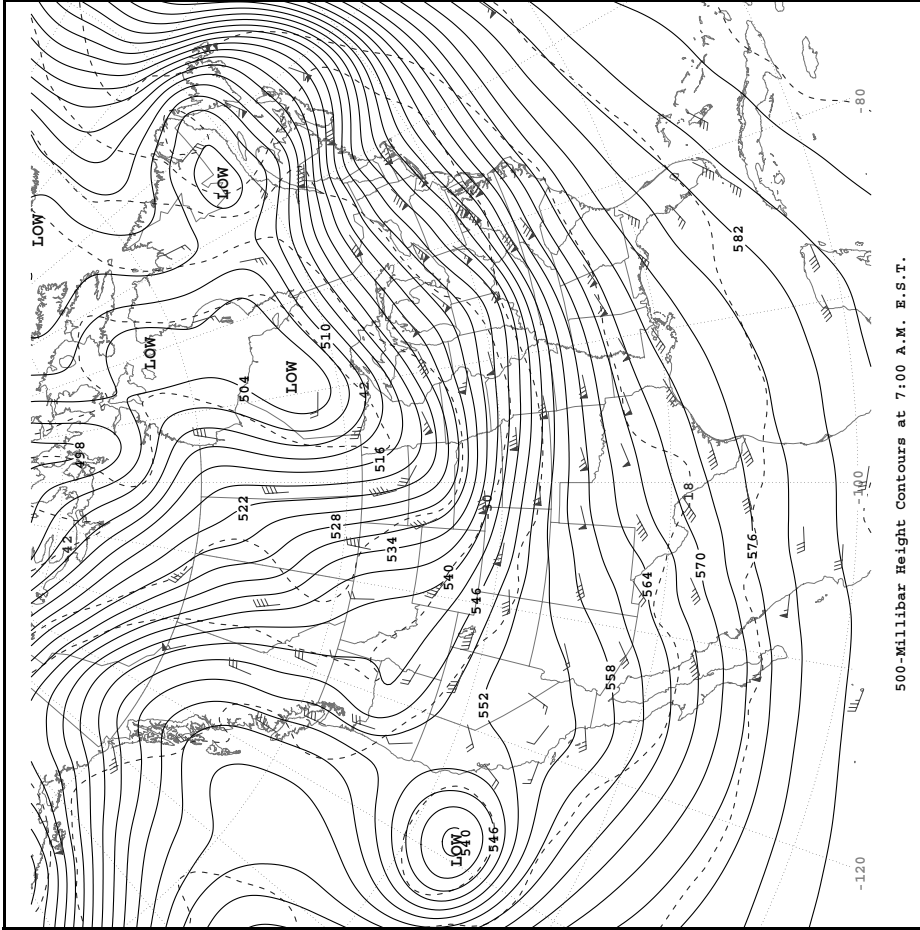
Correspondence to the meteorologists should be directed to: ***Daily Weather Map*, NOAA/National Weather Service, Room 410, 5200 Auth Rd, Camp Springs, MD 20746.**

NOAA/NWS/NCEP/CPC
Daily Weather Maps, W/NP5
5200 Auth Road, Room 800
Camp Springs, MD 20746-4304

FIRST CLASS MAIL
POSTAGE & FEES PAID
NOAA
PERMIT NO. G-19



Surface Weather Map and Station Weather at 7:00 A.M. E.S.T.



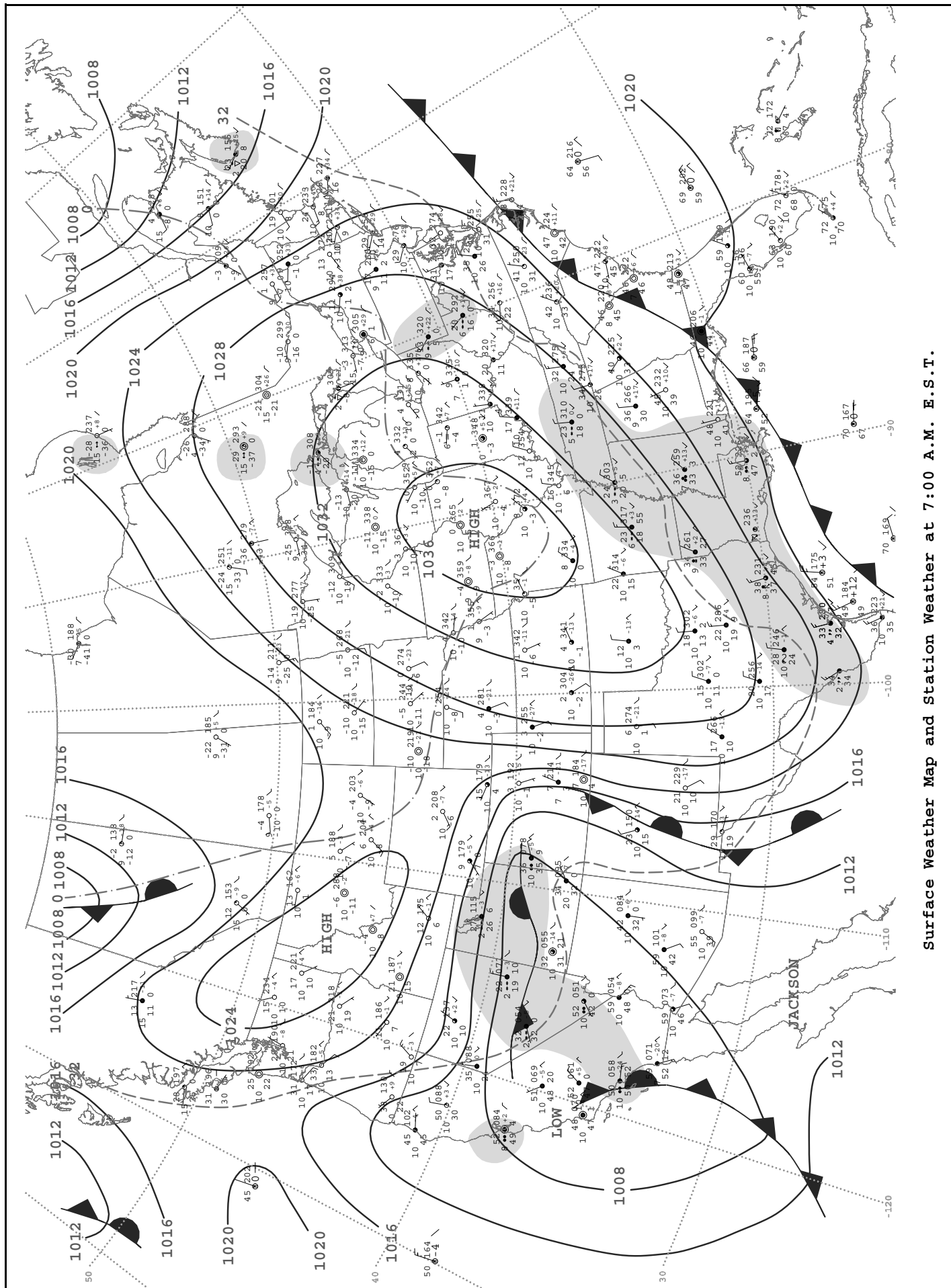
Station Model

The station model diagram consists of several symbols and their corresponding data fields:

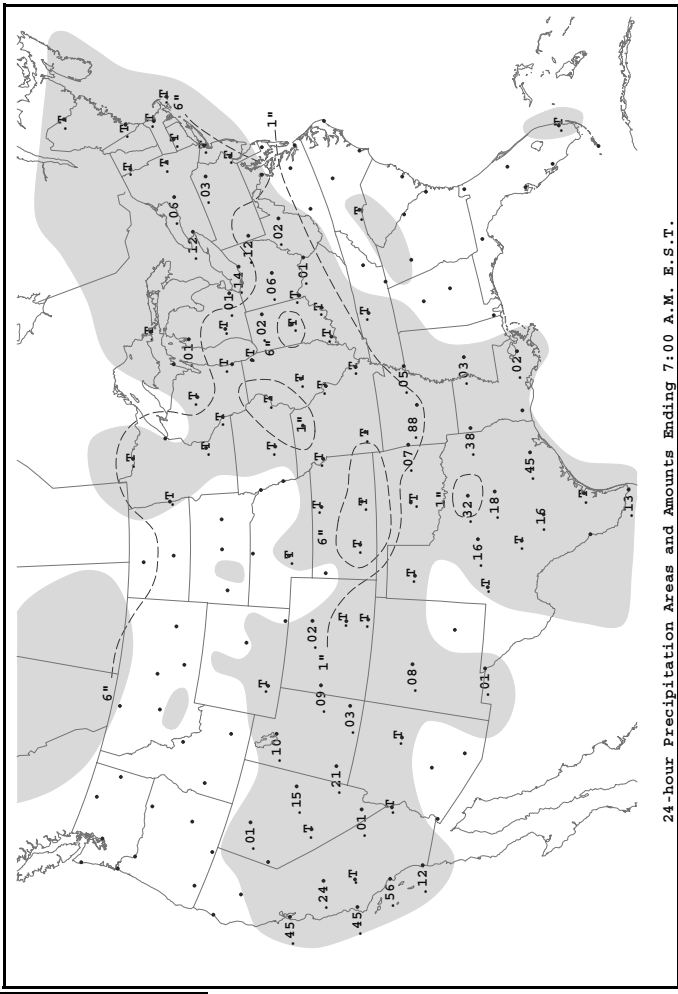
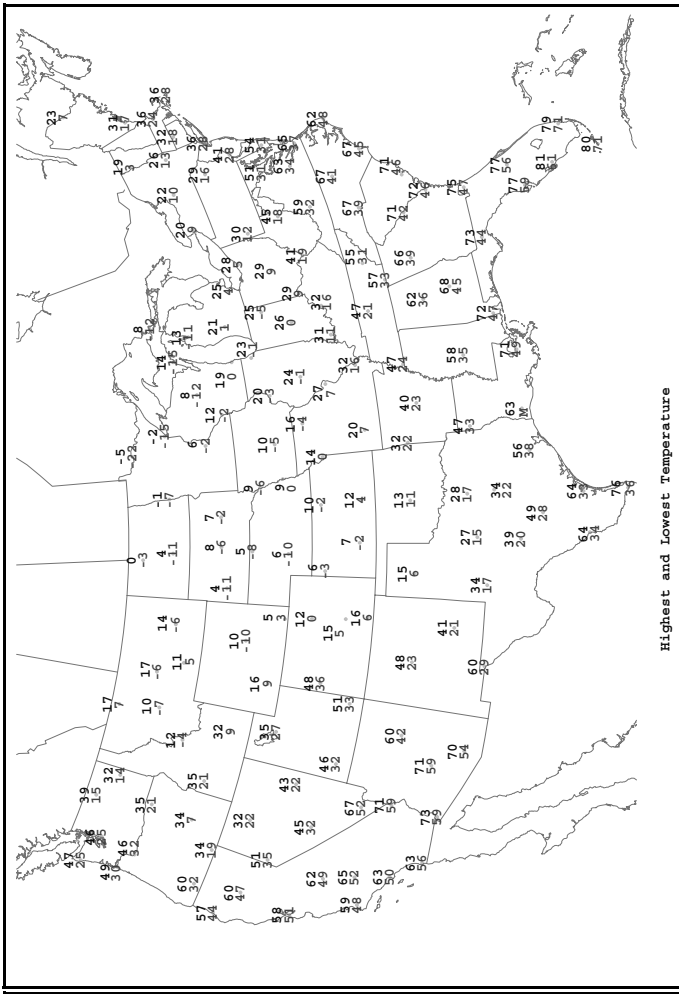
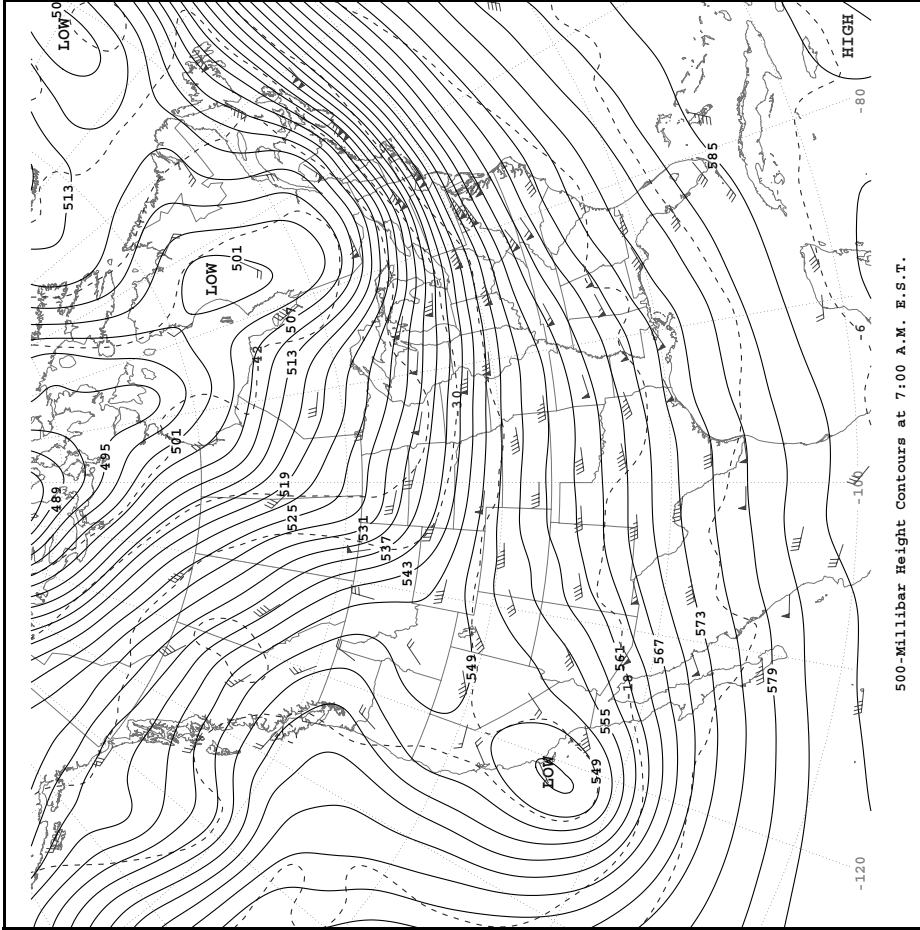
- Wind Direction:** Indicated by a vertical line with a short horizontal bar at the top.
- Wind Speed:** Indicated by the length of the horizontal bar extending from the vertical line. Long Feather = 10 knots, Short Feather = 5 knots.
- Current Temperature (in °F):** Represented by the number 'dd'.
- Wind Feather:** Represented by the number 'ff'.
- Visibility (in miles):** Represented by the number 'TT'.
- Present Weather Symbol:** Represented by the number 'V'.
- Dew Point Temperature:** Represented by the number 'WW'.
- 3-Digit Surface Pressure (in tenths):** Represented by the number 'PPP'.
- 3 Hour Pressure Tendency (in tenths):** Represented by the number 'PP a'.
- 6 Hour Total Precipitation (in hundredths of an inch):** Represented by the number 'RR'.
- Sky Cover:** Represented by the number 'Sky_Cover'.

Examples of pressure values: 989 = 998.9mb, 012 = 1001.2mb.

MONDAY, FEBRUARY 24, 2003



Surface Weather Map and Station Weather at 7:00 A.M. E.S.T.



Station Model

Wind Direction: **W** (Wind Feather - 10 knots, Short Feather - 5 knots)

Current Temperature (in °F): **55** (°F)

Wind Speed: **10** (Long Feather - 10 knots, Short Feather - 5 knots)

Visibility (in miles): **10** (Miles)

3-Digit Surface Pressure (in tenths): **998** (989 = 998.9mb, 012 = 1001.2mb)

Present Weather Symbol: **RR** (Rain)

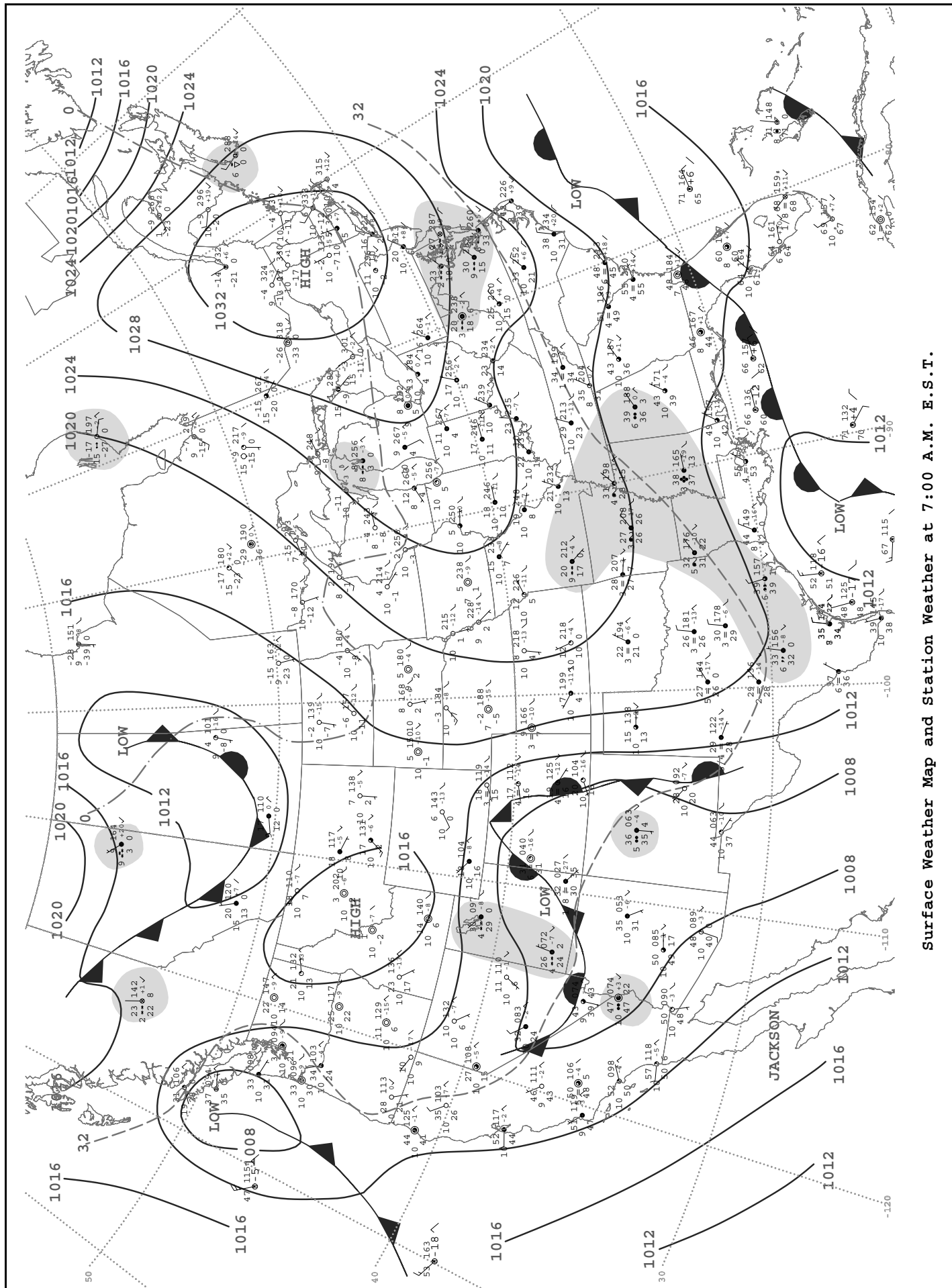
Dew Point Temperature: **53** (°F)

3 Hour Pressure Tendency (in tenths): **01** (01 = 1.0mb)

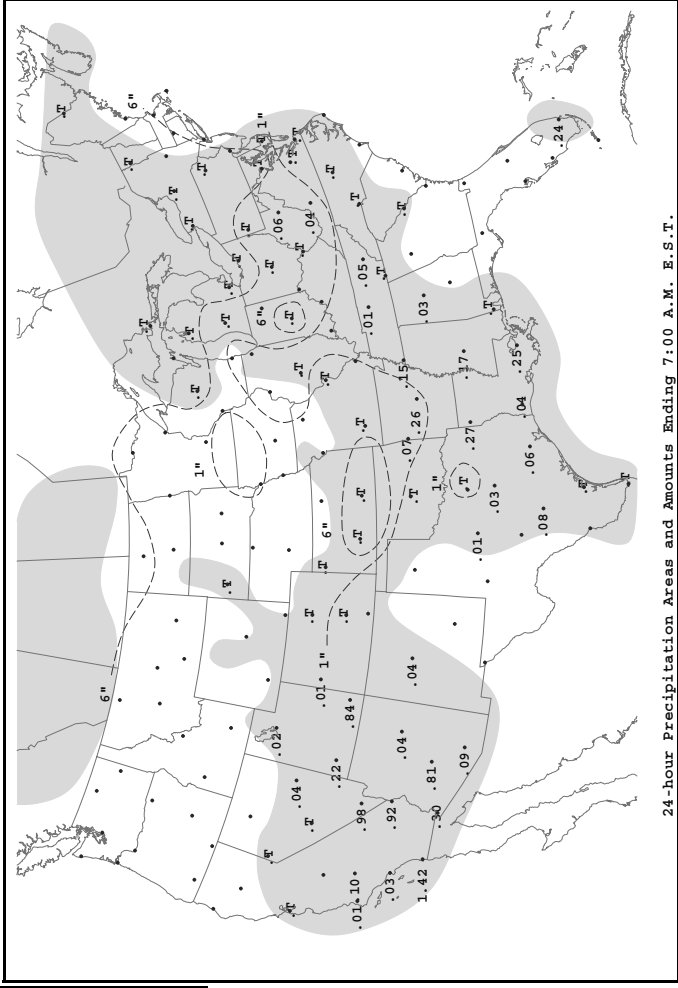
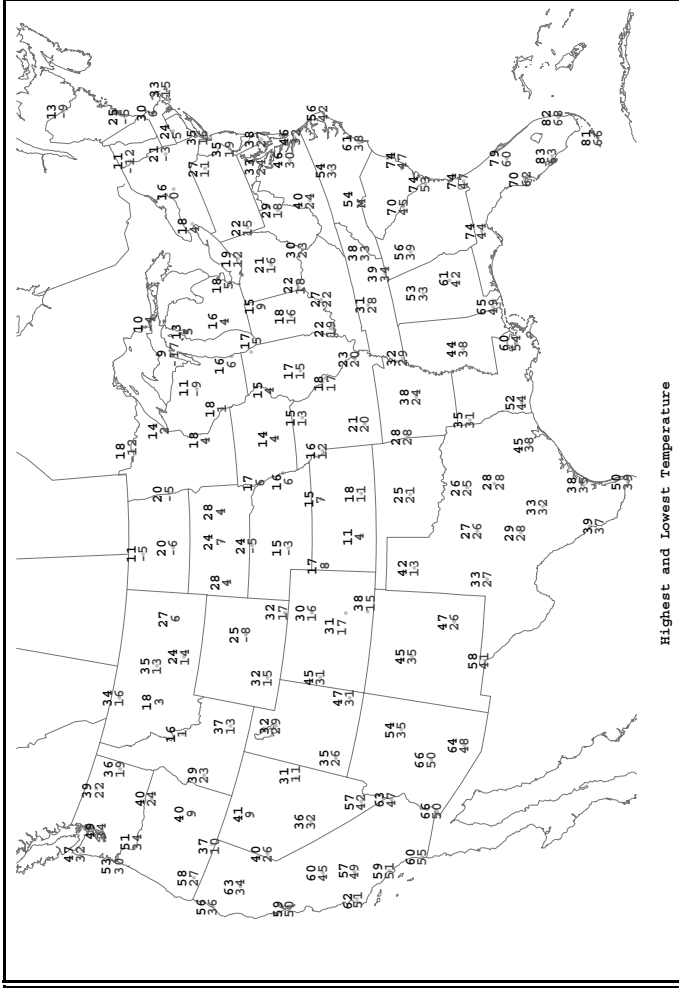
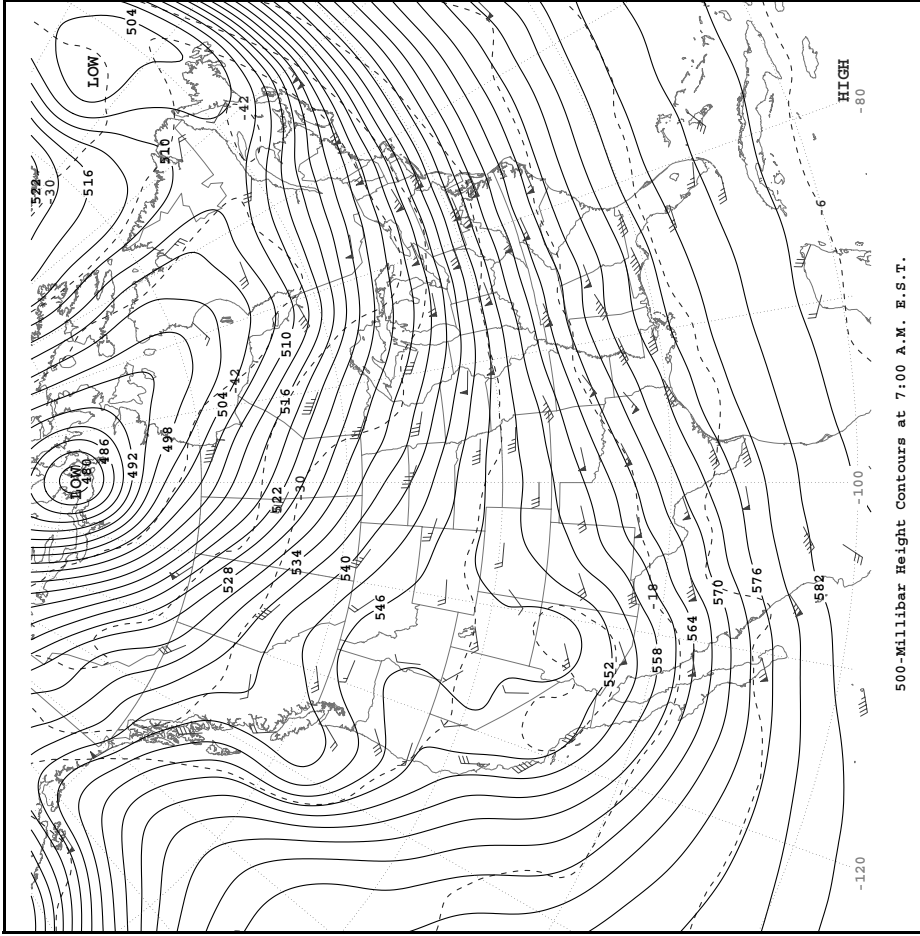
6 Hour Total Precipitation (in hundredths of an inch): **00** (00 = 0.00 inches)

Sky Cover: **00** (00 = 0% sky cover)

TUESDAY, FEBRUARY 25, 2003



Surface Weather Map and Station Weather at 7:00 A.M. E.S.T.



Station Model

Wind Direction: **W** (Wind Feather - 10 knots, Short Feather - 5 knots)

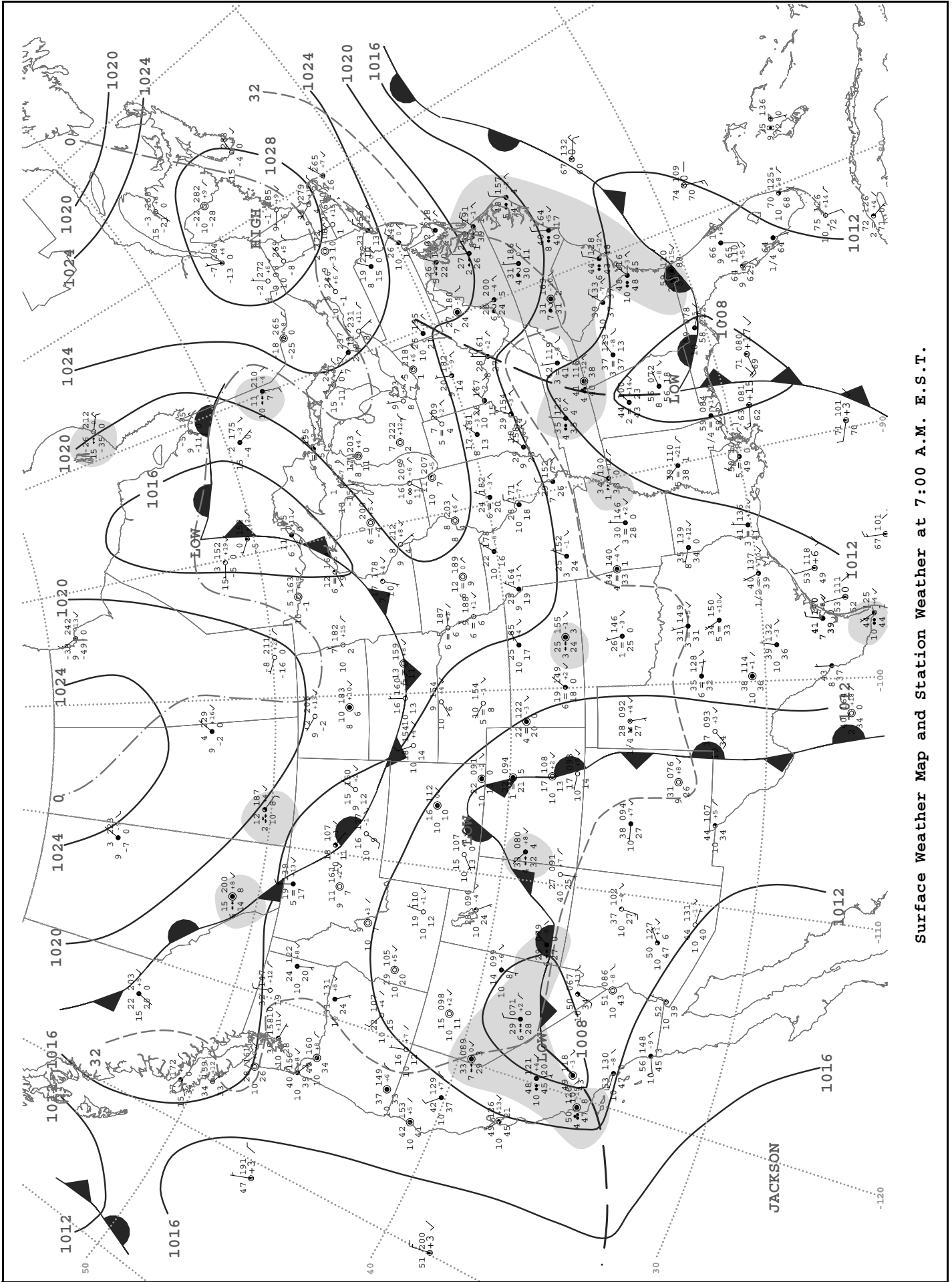
Current Temperature (in °F): **42** (Long Feather - 10 knots, Short Feather - 5 knots)

Visibility (in miles): **10** (3-Digit Surface Pressure (in tenths), Ex: 989 = 998.9mb, 012 = 1001.2mb)

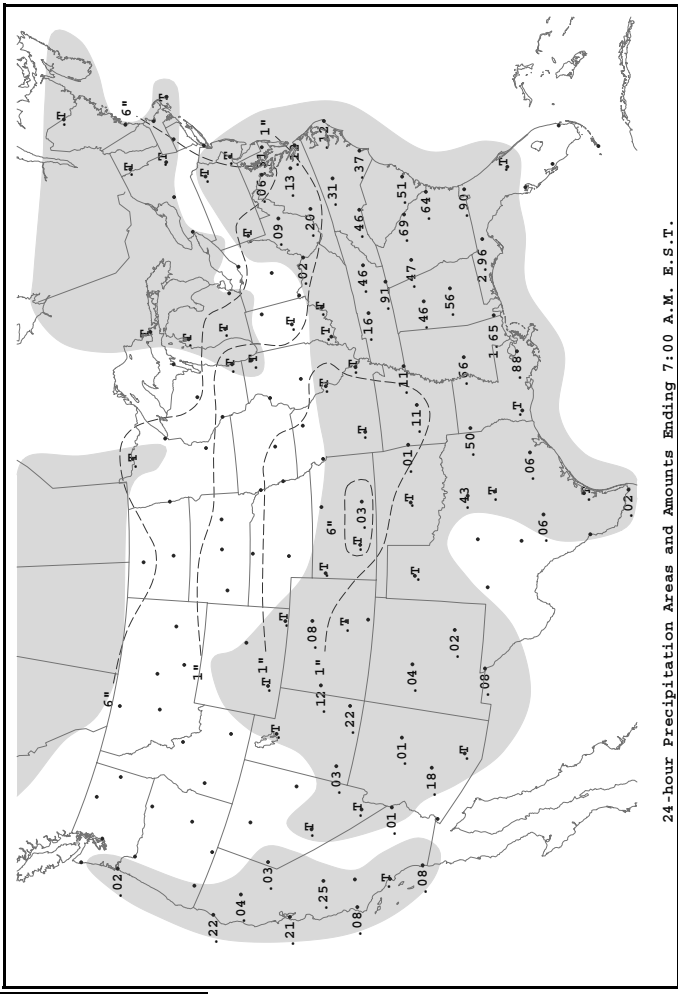
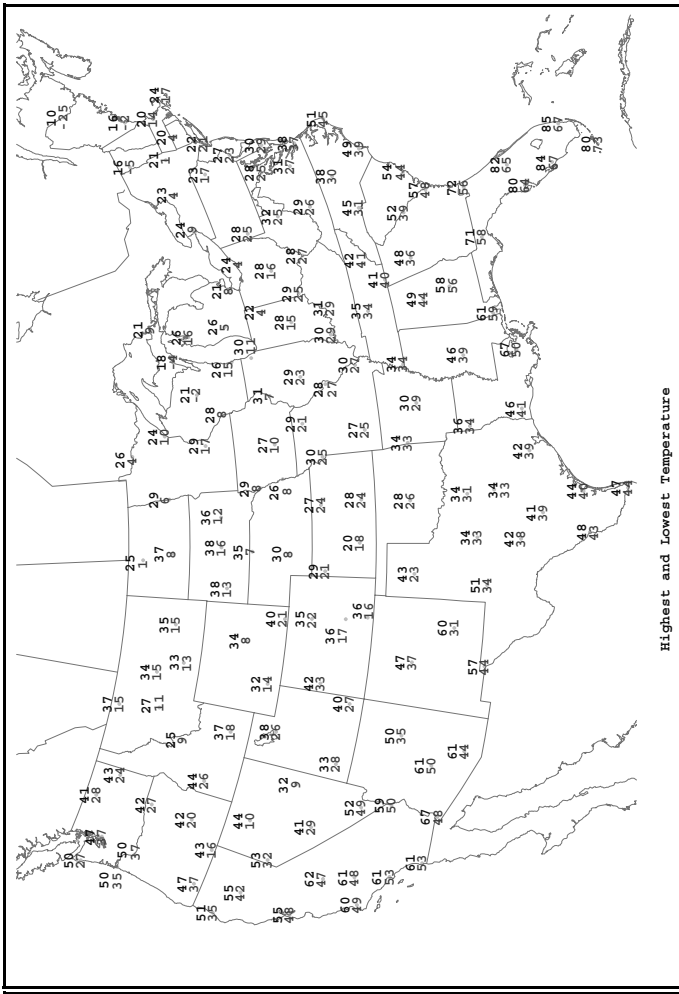
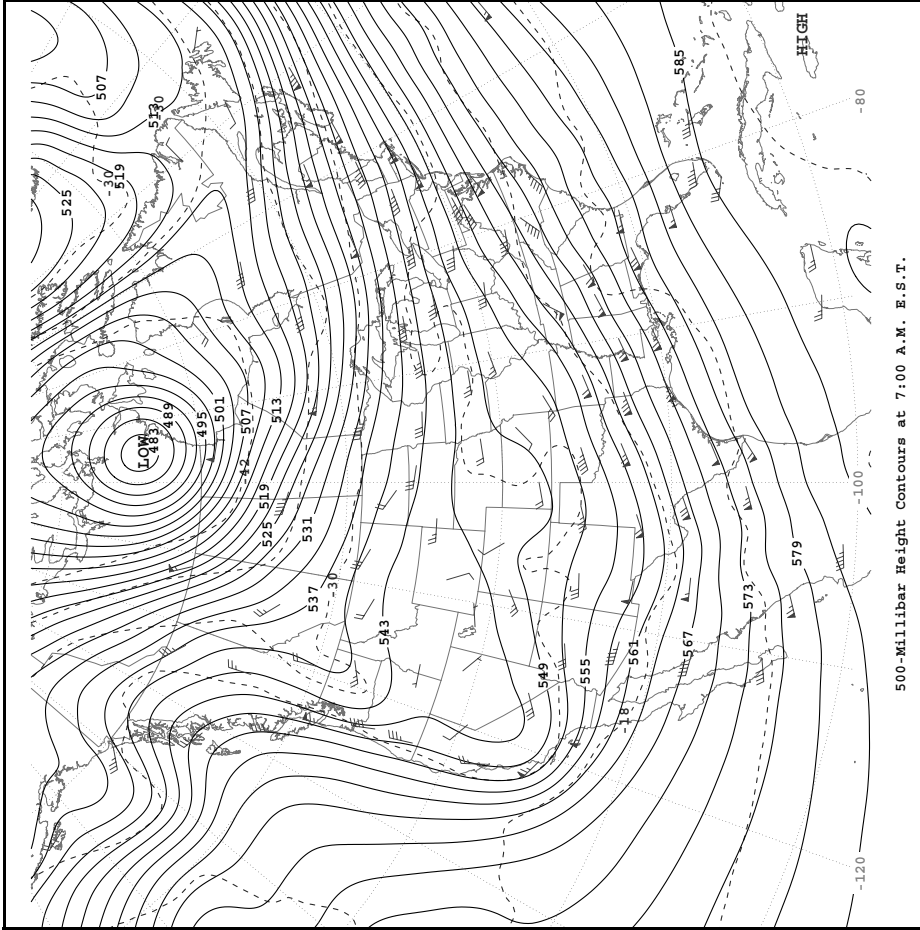
Present Weather Symbol: **RA** (3 Hour Pressure Tendency (in tenths), 6 Hour Total Precipitation (in hundredths of an inch))

Dew Point Temperature: **30** (Sky Cover)

WEDNESDAY, FEBRUARY 26, 2003



Surface Weather Map and Station Weather at 7:00 A.M. E.S.T.



Station Model

Wind Direction: **FF** — Wind Speed
 Long Feather - 10 knots
 Short Feather - 5 knots

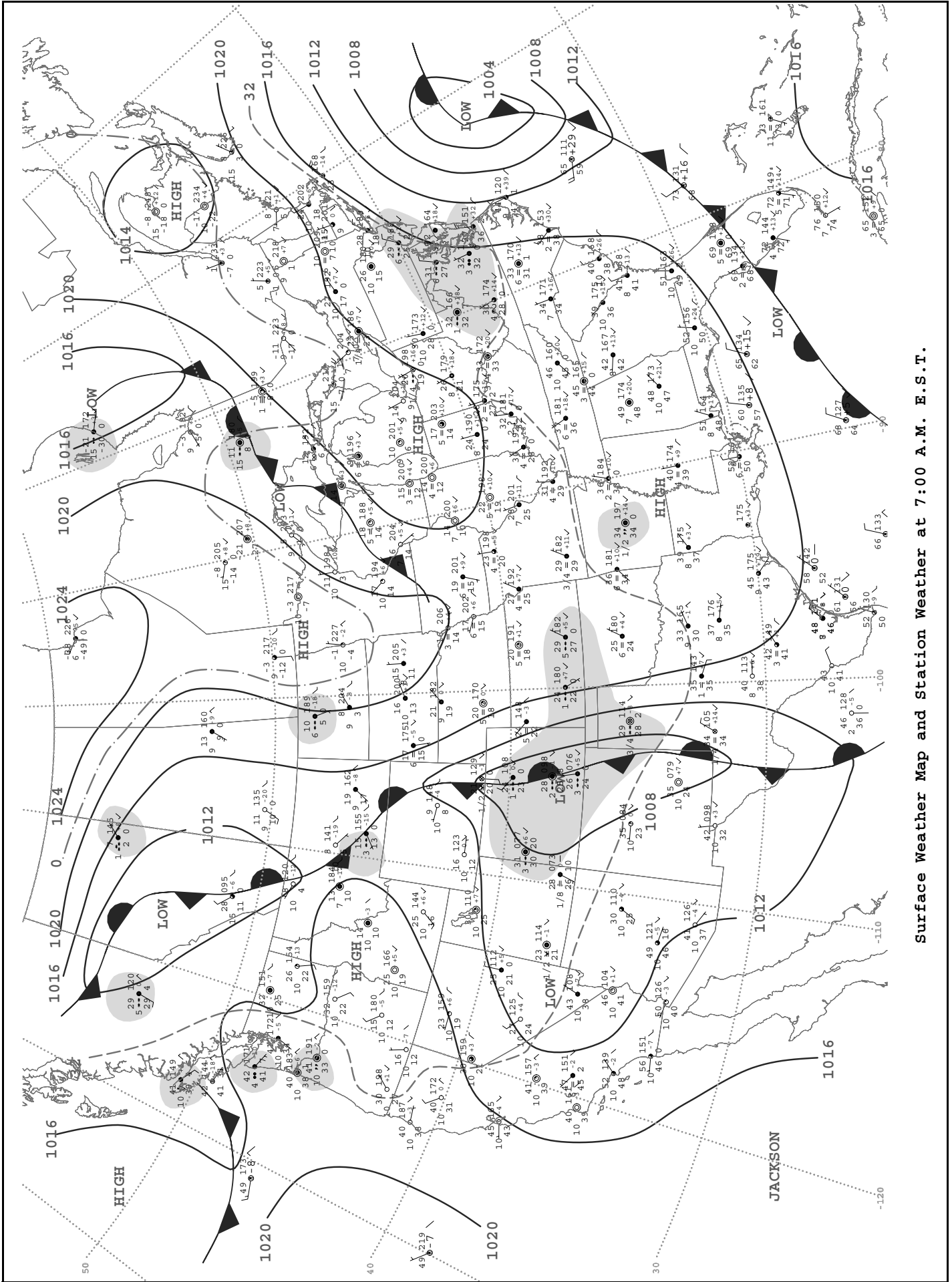
Current Temperature (in °F): **99** — 3-Digit Surface Pressure (in tenths). Ex: 999 = 998.9mb, 012 = 1001.2mb

Visibility (in miles): **01** — 3 Hour Pressure Tendency (in tenths)

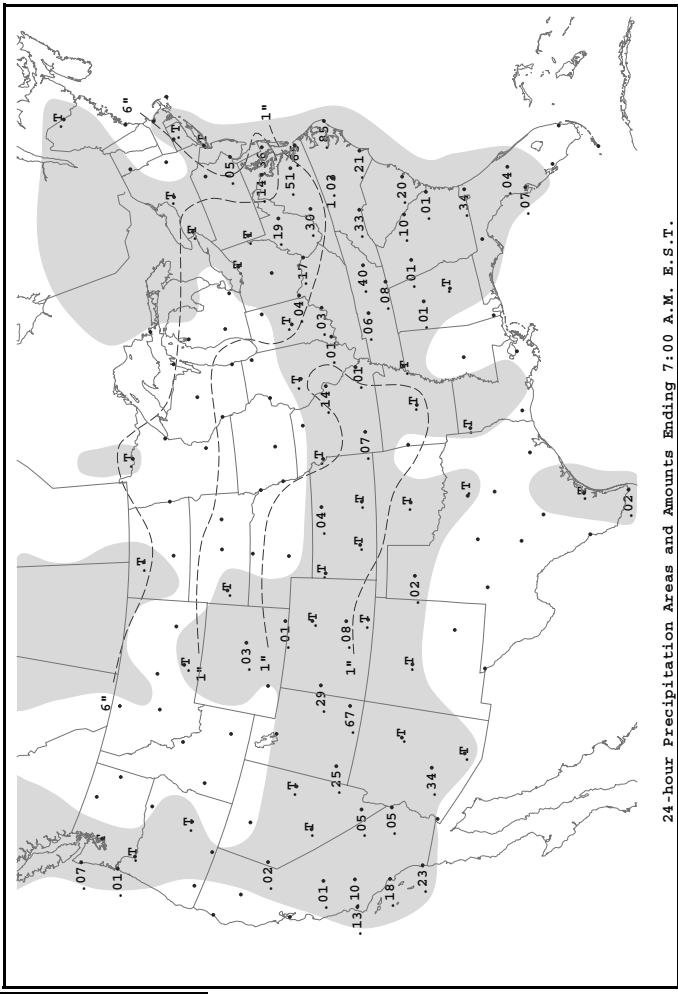
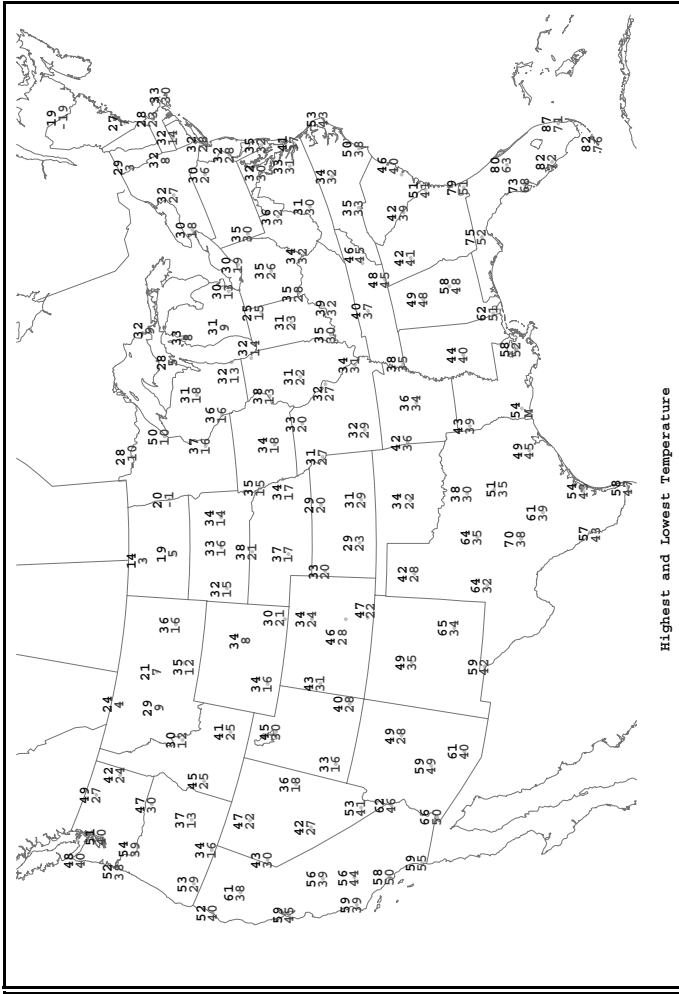
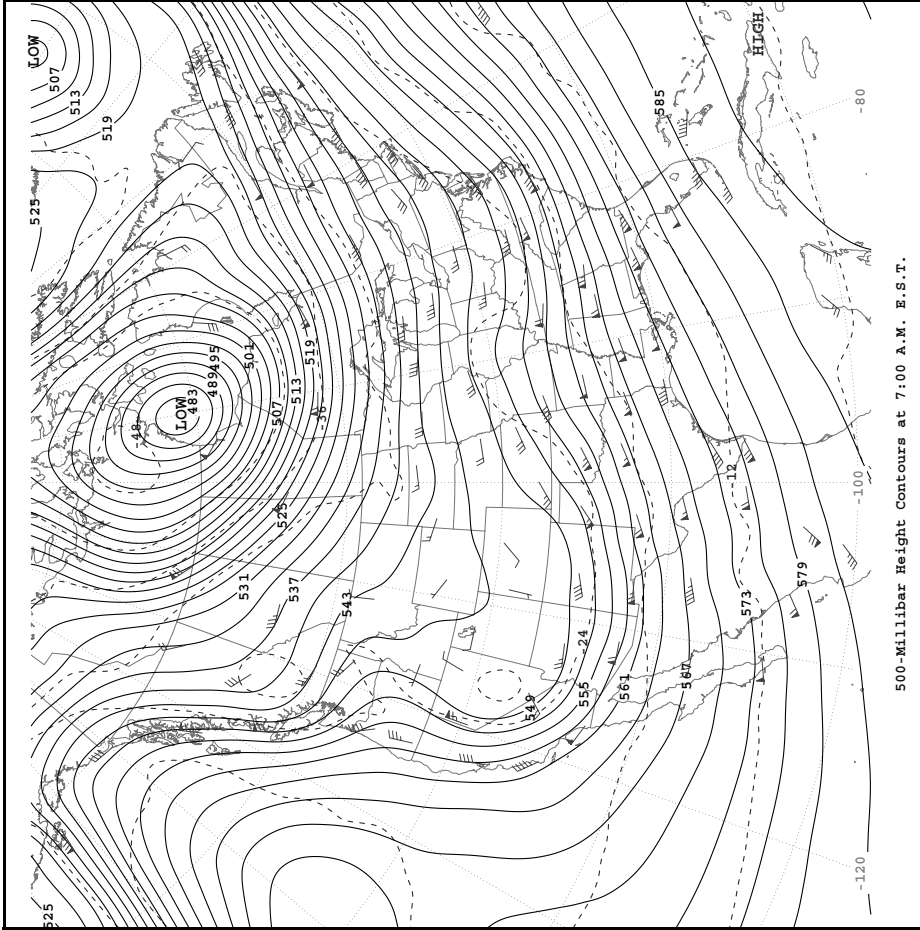
Present Weather Symbol: **RR** — 6 Hour Total Precipitation (in hundredths of an inch)

Dew Point Temperature: **18** — Sky Cover

THURSDAY, FEBRUARY 27, 2003



Surface Weather Map and Station Weather at 7:00 A.M. E.S.T.



Station Model

Wind Direction: **W** (Wind Feather - 10 knots, Short Feather - 5 knots)

Current Temperature (in °F): **44**

Wind Speed: **10** (Long Feather - 10 knots, Short Feather - 5 knots)

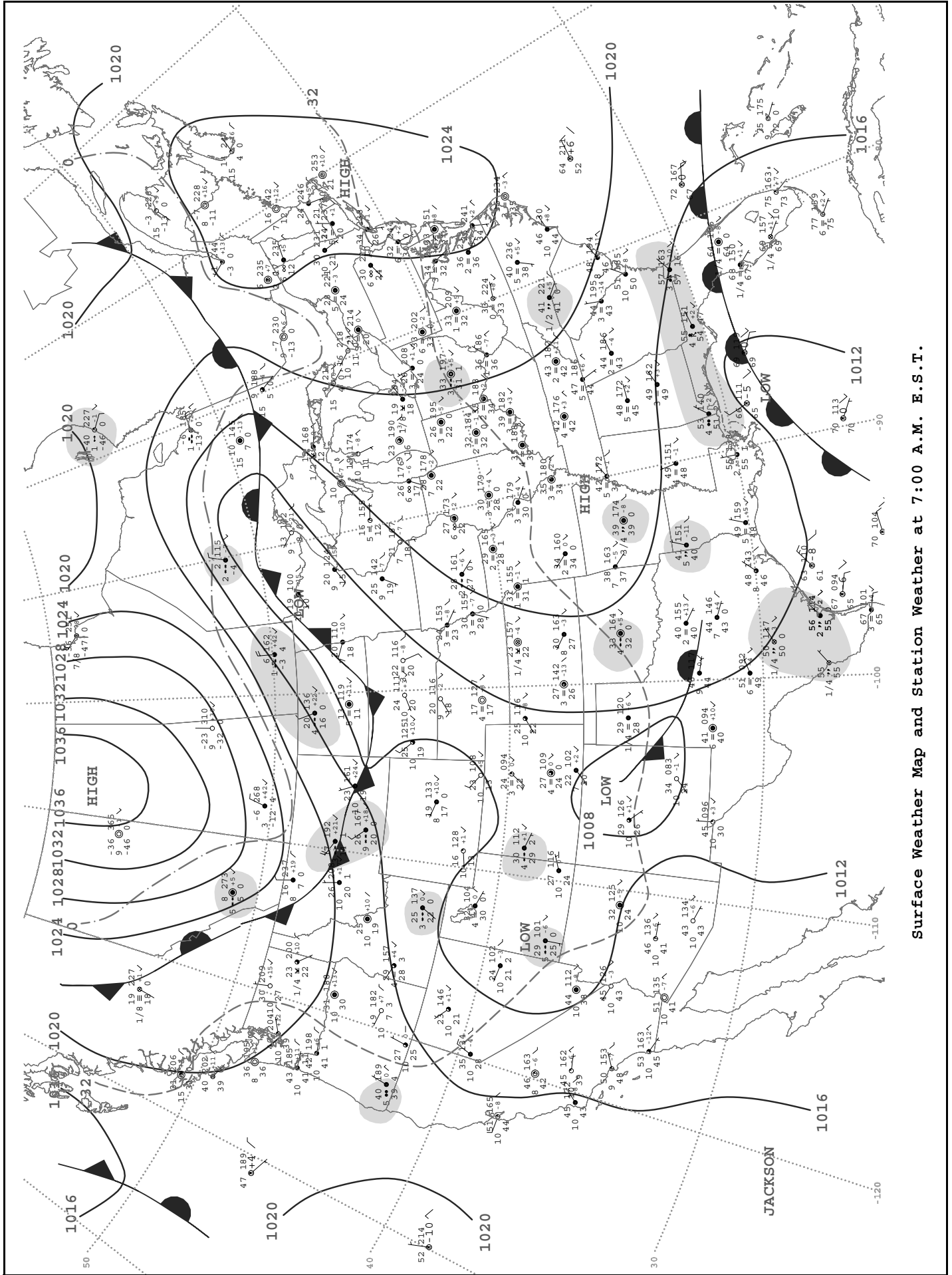
Visibility (in miles): **10**

3-Digit Surface Pressure (in tenths): **999** (Ex: 999 = 999.9mb, 012 = 1001.2mb)

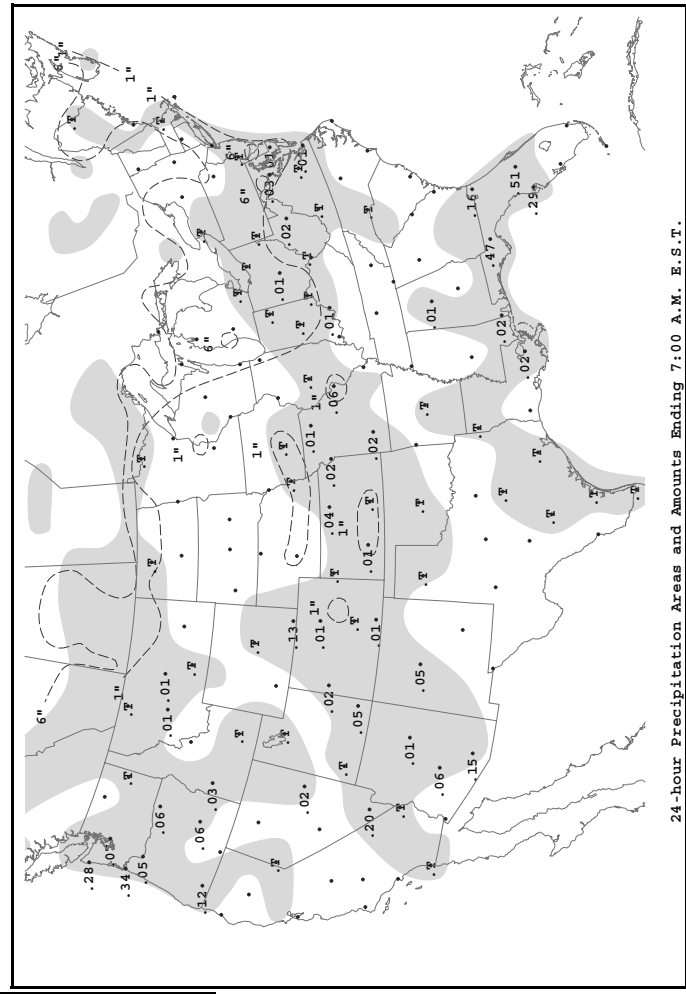
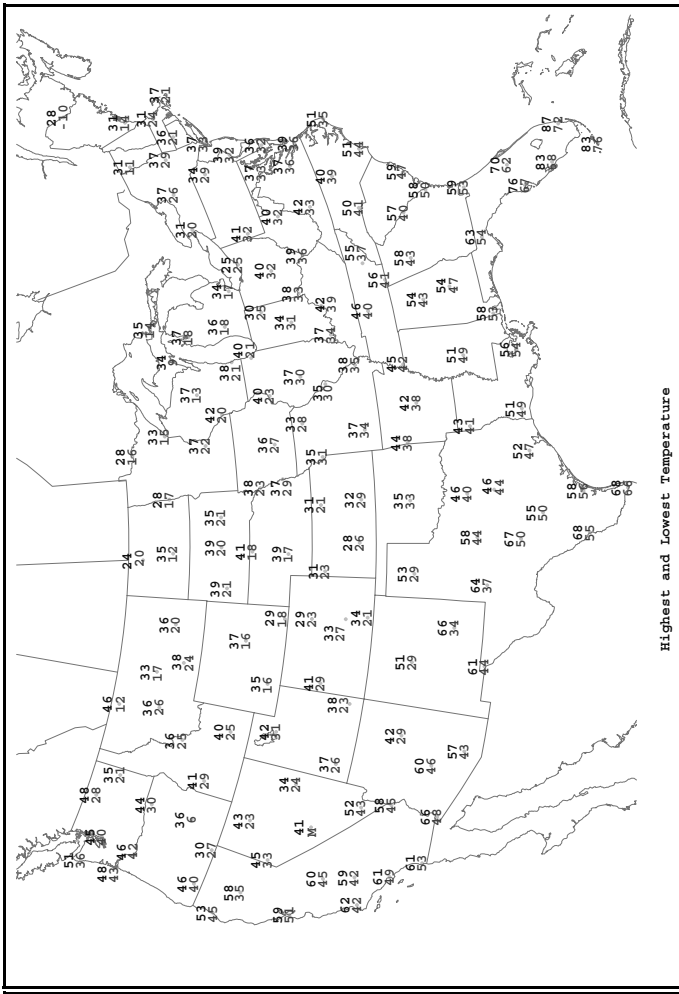
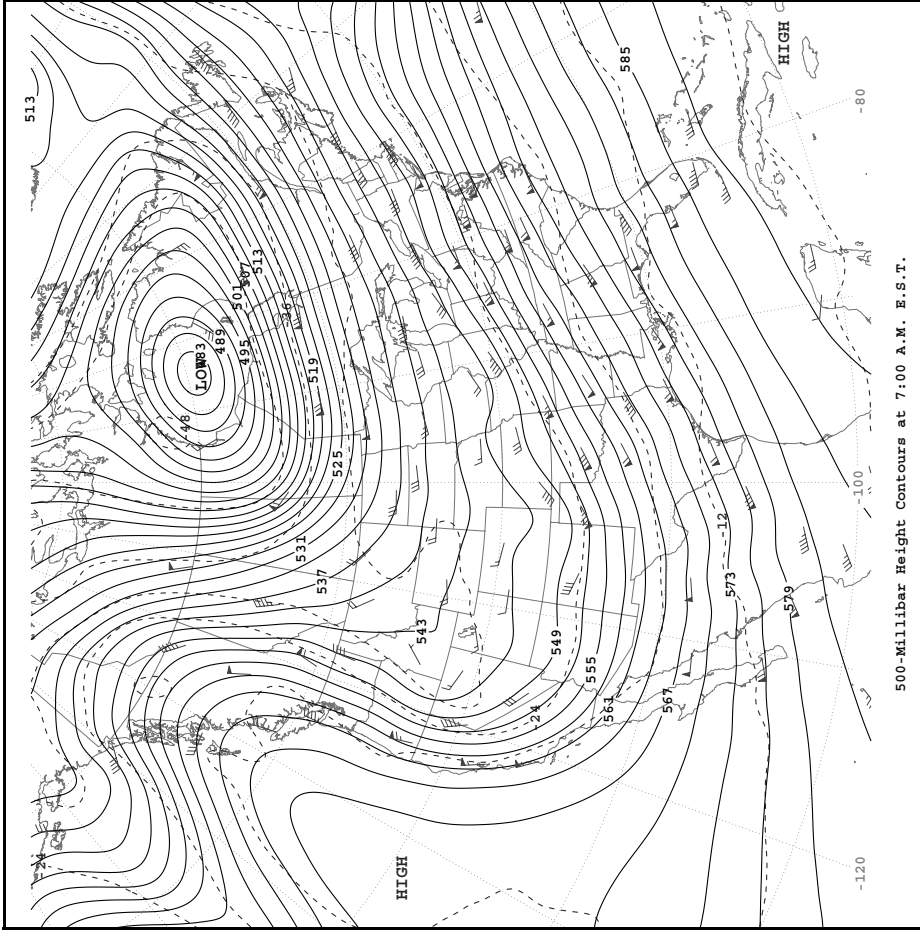
Present Weather Symbol: **RR** (3 Hour Pressure Tendency (in tenths): **01**, 6 Hour Total Precipitation (in hundredths of an inch): **01**)

Dew Point Temperature: **36** (Sky Cover: **00**)

FRIDAY, FEBRUARY 28, 2003



Surface Weather Map and Station Weather at 7:00 A.M. E.S.T.



Station Model

Wind Direction: **W** (Long Feather - 10 knots, Short Feather - 5 knots)

Current Temperature (in °F): **66** (ft)

Visibility (in miles): **10** (V)

Wind Speed: **10** (Long Feather - 10 knots, Short Feather - 5 knots)

3-Digit Surface Pressure (in tenths): **1012** (PPP)

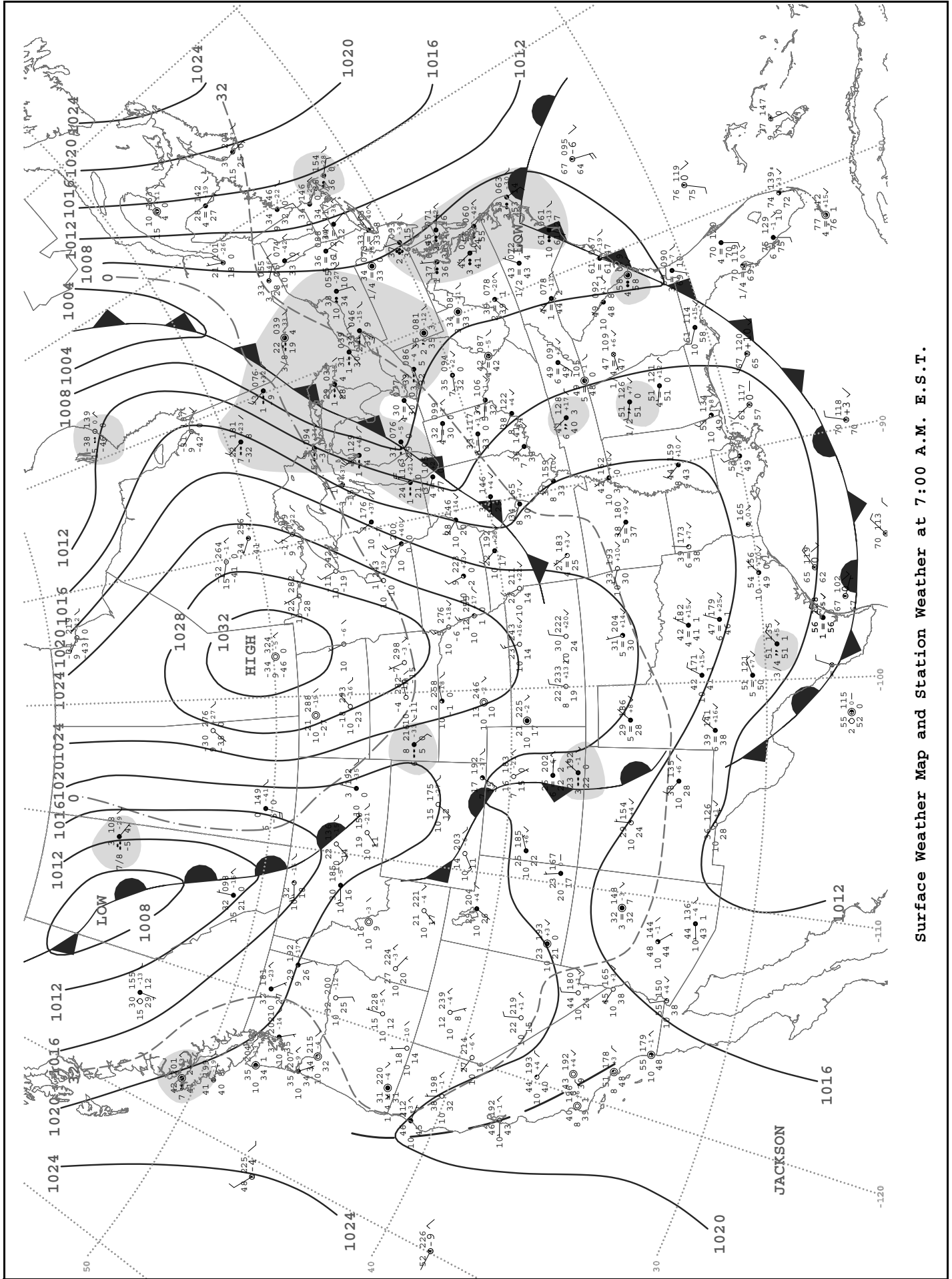
Present Weather Symbol: **RR** (3 Hour Pressure Tendency (in tenths))

Dew Point Temperature: **50** (TT)

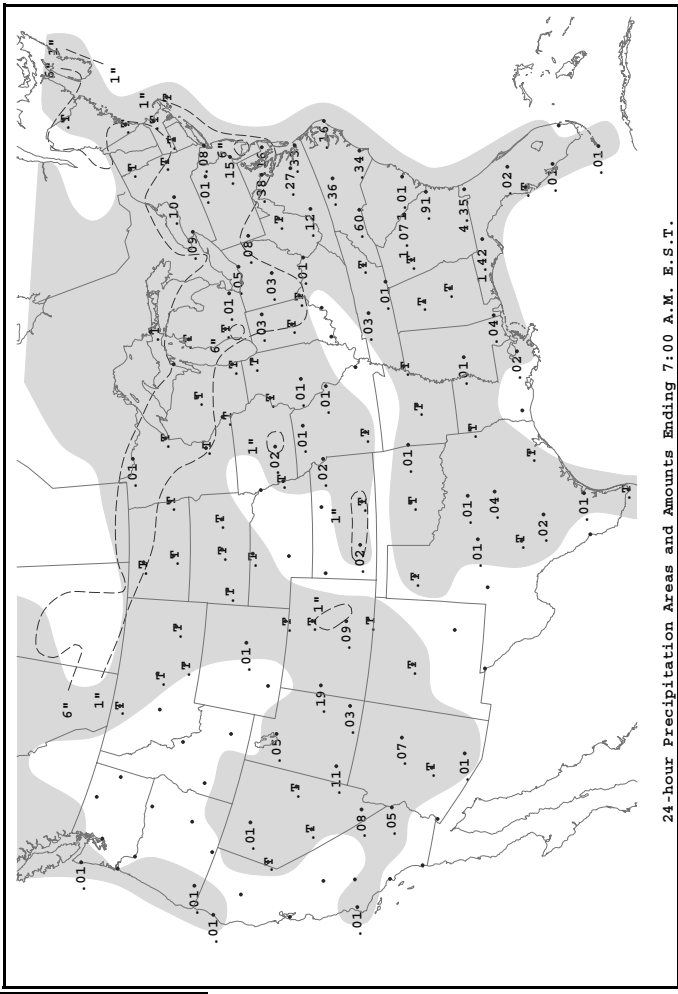
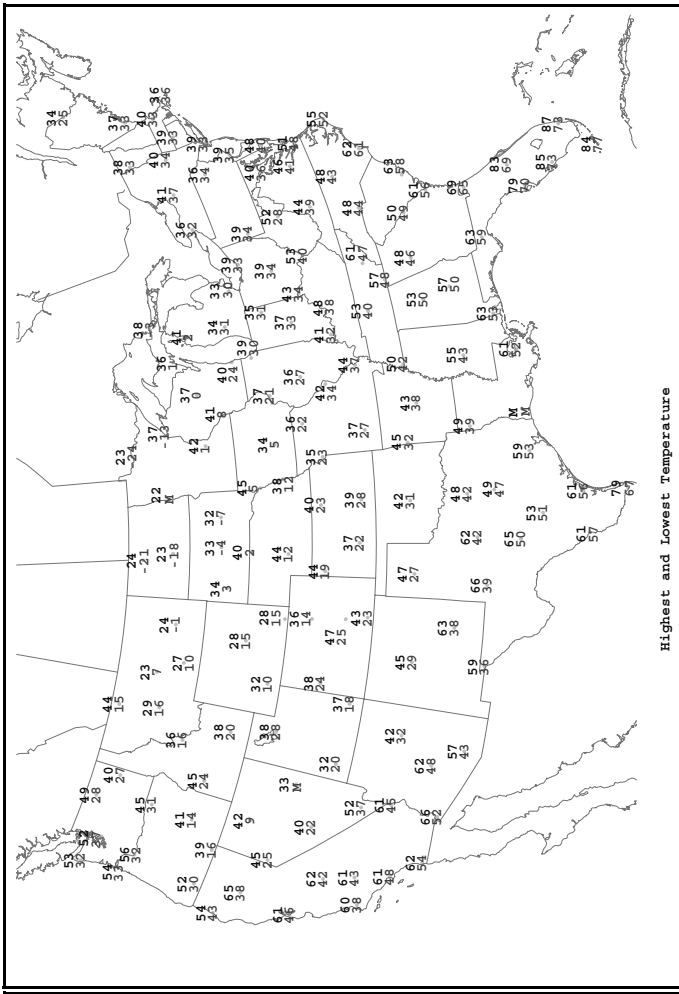
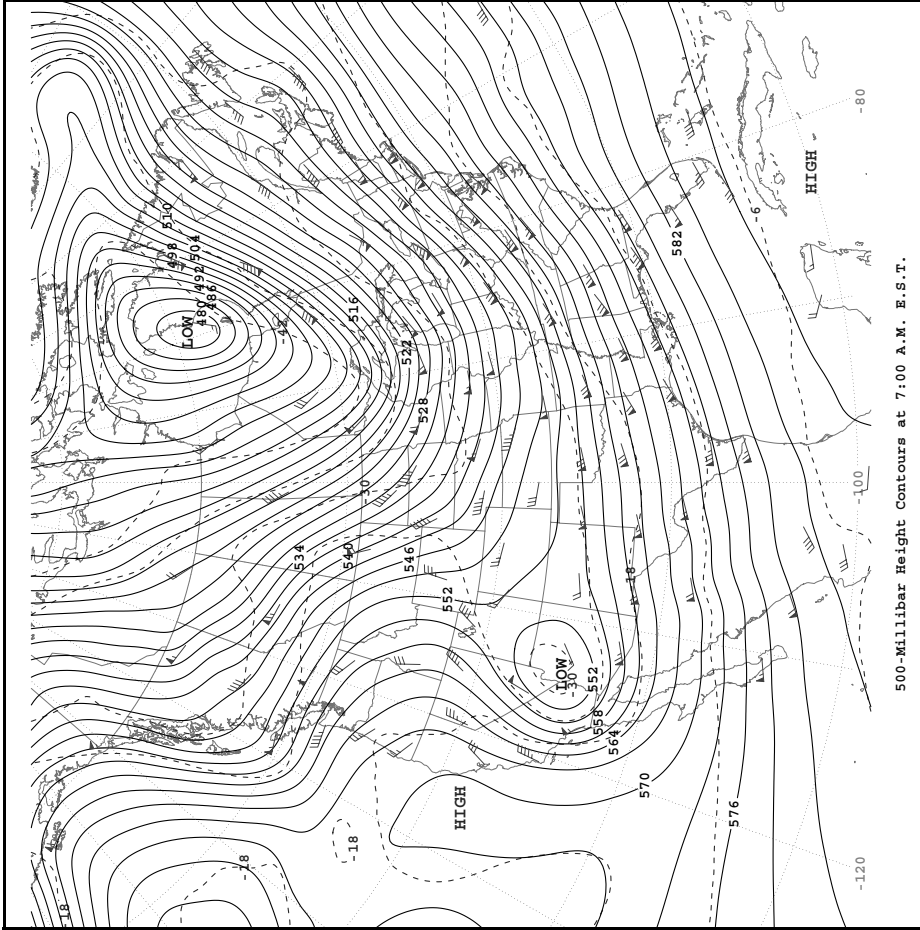
6 Hour Total Precipitation (in hundredths of an inch): **0.02** (RR)

Examples: 989 = 998.9mb, 012 = 1001.2mb

SATURDAY, MARCH 1, 2003



Surface Weather Map and Station Weather at 7:00 A.M. E.S.T.



Station Model

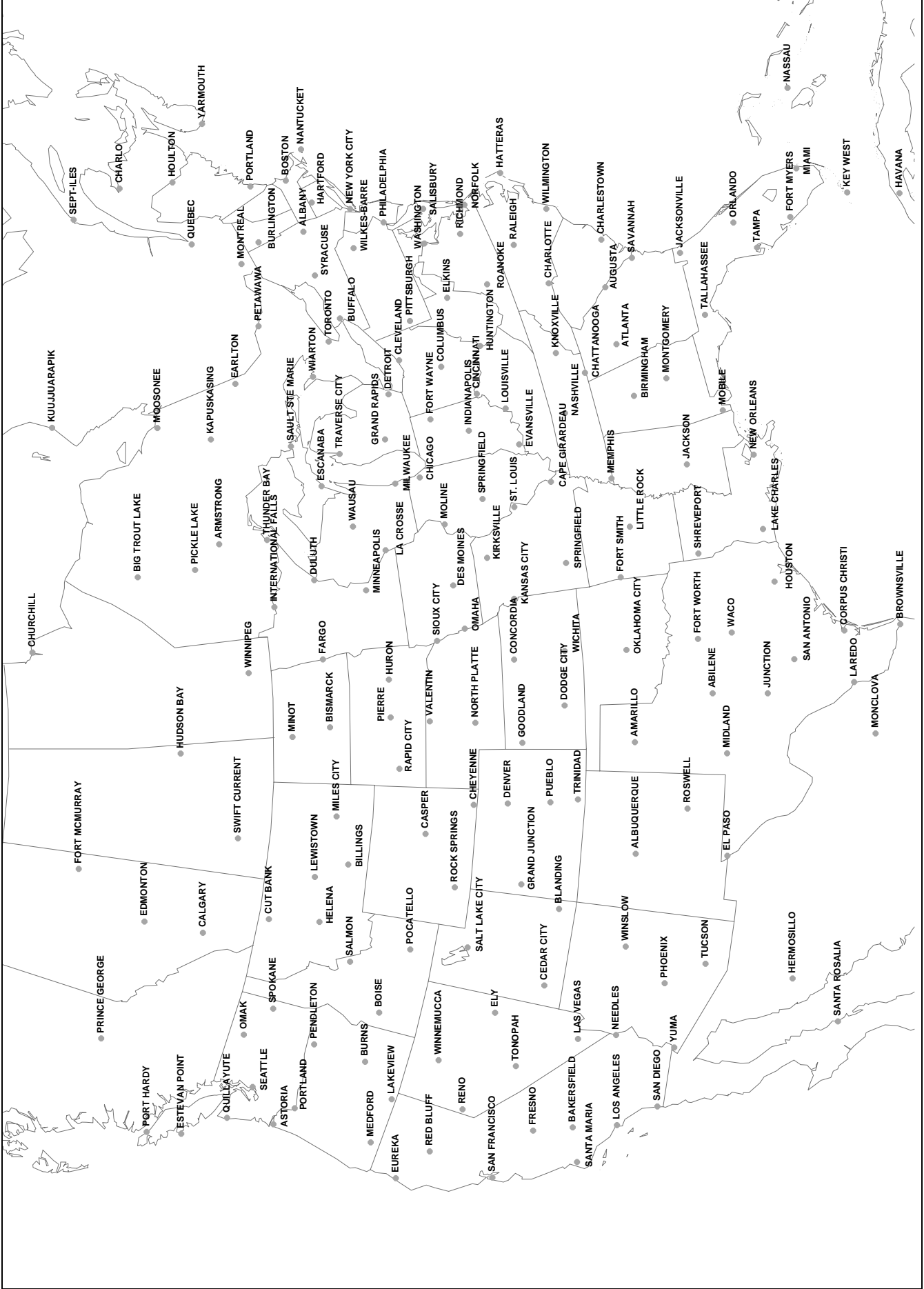
Wind Direction: **F** (feather) — Wind Speed: Long Feather - 10 knots, Short Feather - 5 knots

Current Temperature (in °F): **dd** — 3-Digit Surface Pressure (in tenths): Ex: 989 = 998.9mb, 012 = 1001.2mb

Visibility (in miles): **TT** — Present Weather Symbol: **PP** — Dew Point Temperature: **PP a** — Sky Cover: **RR**

3 Hour Pressure Tendency (in tenths): **PP** — 6 Hour Total Precipitation (in hundredths of an inch): **RR**

SUNDAY, MARCH 2, 2003



Daily Weather Map Station Names and Locations