



# Daily Weather Maps

**MARCH 14, 2005 - MARCH 20, 2005**

**Week 11**

The following charts are the principal charts of the former National Weather Service publication, "Daily Weather Map." They are the Surface Weather Map, the 500-Millibar Height Contours chart, the Highest and Lowest Temperatures chart, and the Precipitation Areas and Amounts chart. All charts are derived from the operational weather maps prepared at the National 14 Centers for Environmental Prediction, Hydrometeorological Prediction Center, National Weather Service. The symbols on the Surface Weather Map and the 500-Millibar Height contours are standard international symbols.

The Surface Weather Map shows station data and the analysis for 7:00 a.m. EST. Areas of precipitation are indicated by shading. The weather reports displayed here are only a fraction of those on which the analyses are based. Occasional apparent discrepancies between the printed station data and the analyses result from the absence of station reports not included here because of a lack of space.

The 500-Millibar Height Contours chart shows height contours (solid lines), temperatures (dashed lines) and winds (arrows) at the 500-Millibar pressure level at 7:00 a.m. EST. The height contours show the height of the 500-millibar pressure level in dekameters above sea level and isotherms, the lines of constant temperature, are shown in degrees Celsius. Arrows show the wind direction and speed at the 500-Millibar level.

The Highest and Lowest Temperature chart shows the maximum temperature for a period from 7:00 a.m. EST the previous day through 1 a.m. EST and the minimum temperature for the period from 7:00 p.m. EST the previous day through 1 p.m. The maximum temperature is plotted above the station location and the minimum temperature is plotted below.

The Precipitation Areas and Amounts chart shows areas (shaded) that had precipitation during the 24 hours ending at 7:00 a.m. EST, with amounts to the nearest hundredth of an inch. "T" indicates a trace of precipitation.

The *Daily Weather Map* is published weekly by the U.S. Department of Commerce, National Oceanic and Atmospheric Administration (NOAA). NOAA and IMC are responsible for managing, printing, and distributing the bulletin. The contents may be reprinted freely, with proper credit.

Annual subscriptions: Domestic and International subscriptions are \$75. Check and credit card

(Visa, MasterCard, Discover, and American Express) payments are accepted. Payments (invoices) should be mailed to: **NNDC/NCDC, P.O. Box 70169, Chicago, IL 60673-0169**; or invoices faxed to: (304) 726-4409.

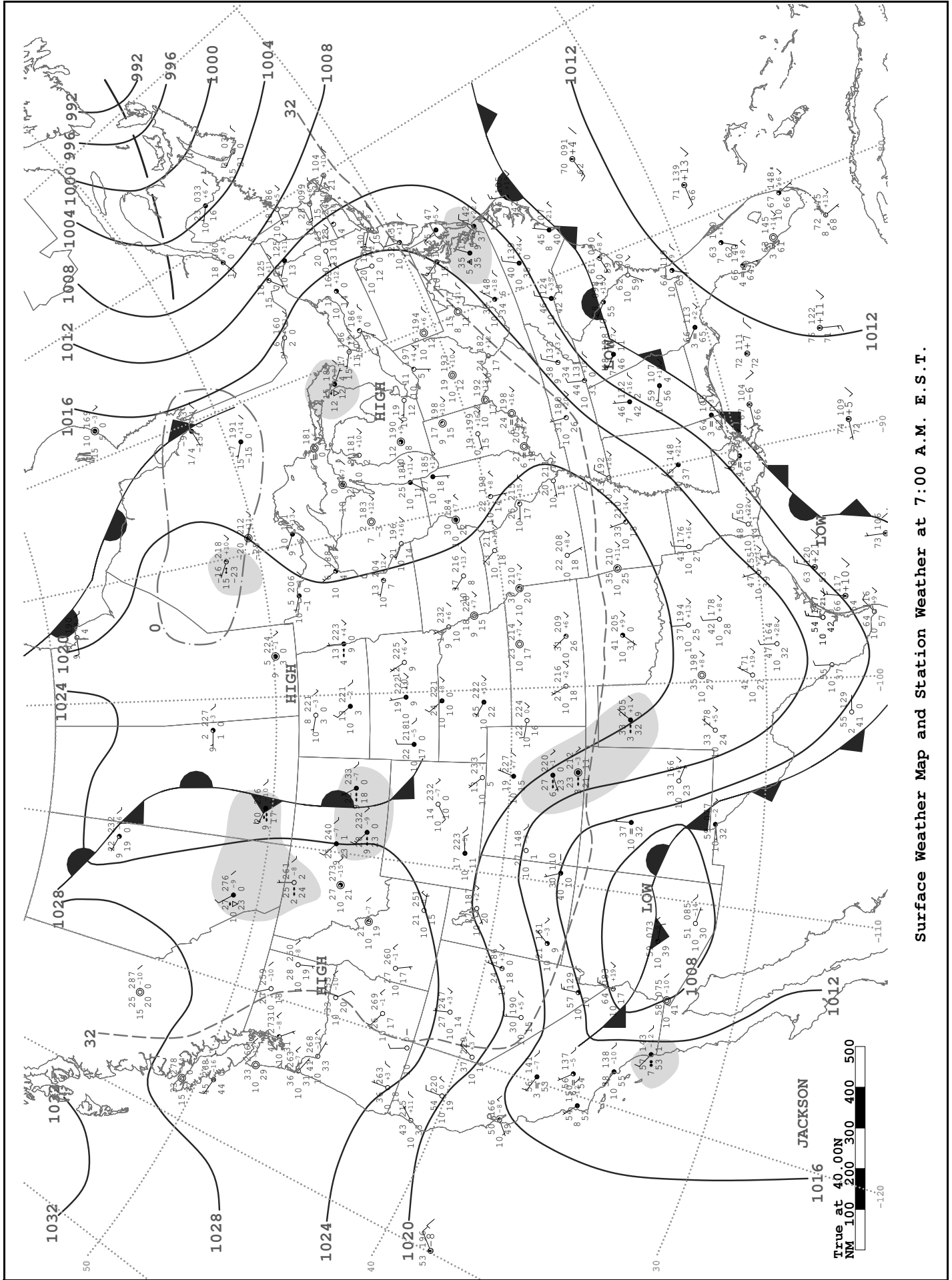
Send address changes to: **NCDC Subscription Services Center, 310 State Route 956, Building 300, Rocket Center, WV 26726**; call toll free:

(866) 742-3322; TDD: (828) 271-4010; fax: (304) 726-4409; or E-mail: [noaasubsvcs@imcww.com](mailto:noaasubsvcs@imcww.com)

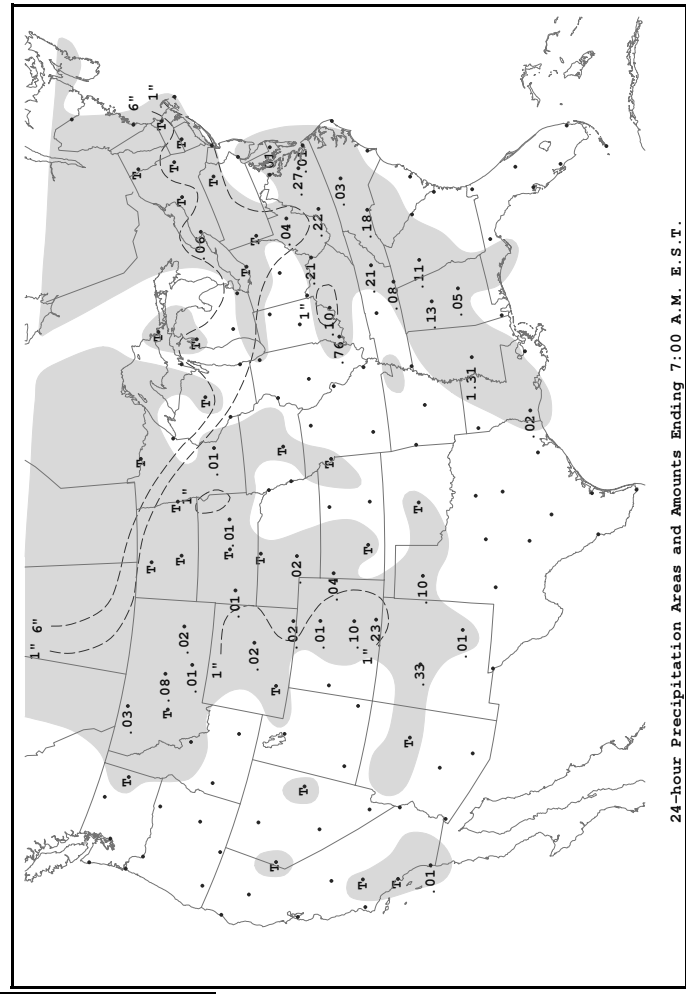
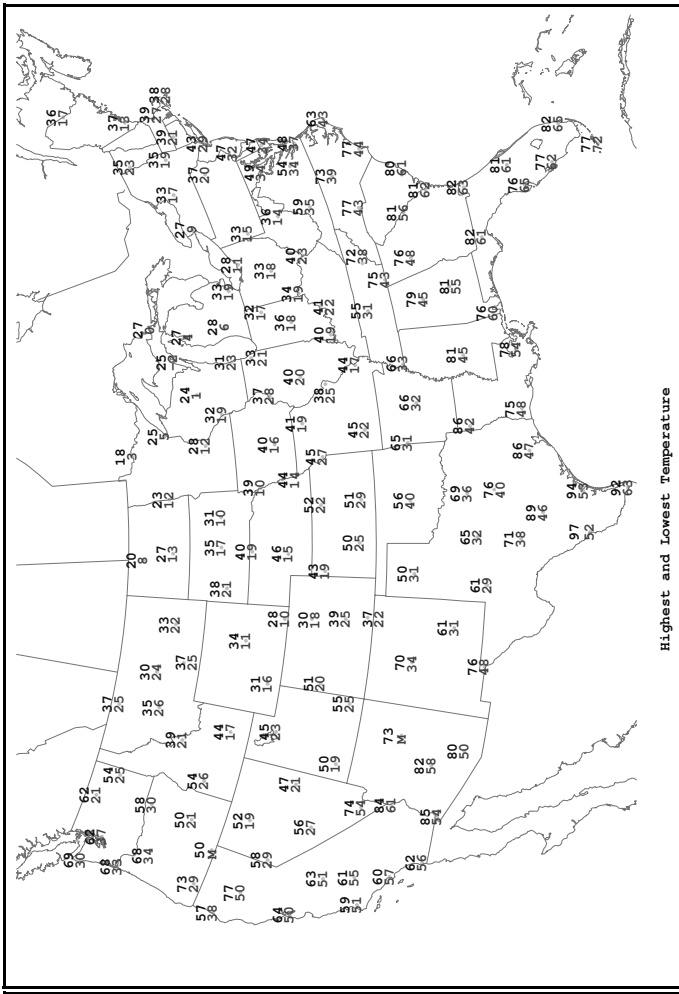
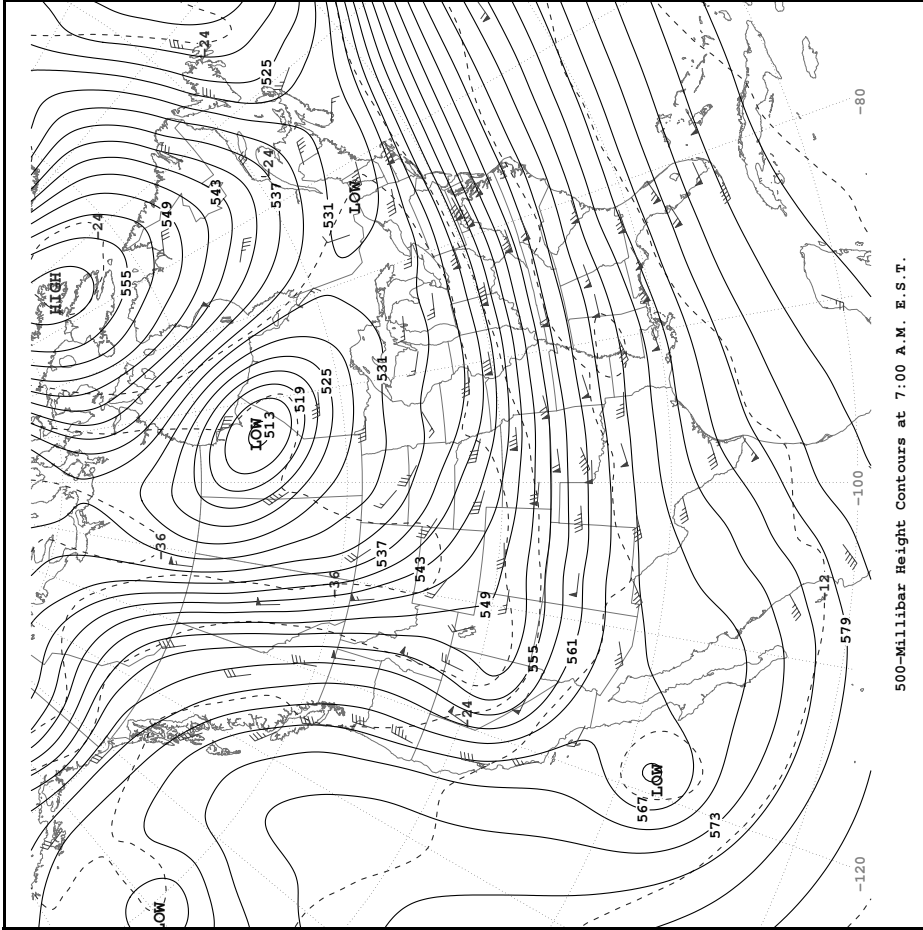
Correspondence to the meteorologists should be directed to: ***Daily Weather Map*, NOAA/National Weather Service, Room 410, 5200 Auth Rd, Camp Springs, MD 20746.**

NOAA/NWS/NCEP/HPC  
Daily Weather Maps, W/NP3  
5200 Auth Road, Room 410  
Camp Springs, MD 20746-4304

FIRST CLASS MAIL  
POSTAGE & FEES PAID  
NOAA  
PERMIT NO. G-19



Surface Weather Map and Station Weather at 7:00 A.M. E.S.T.



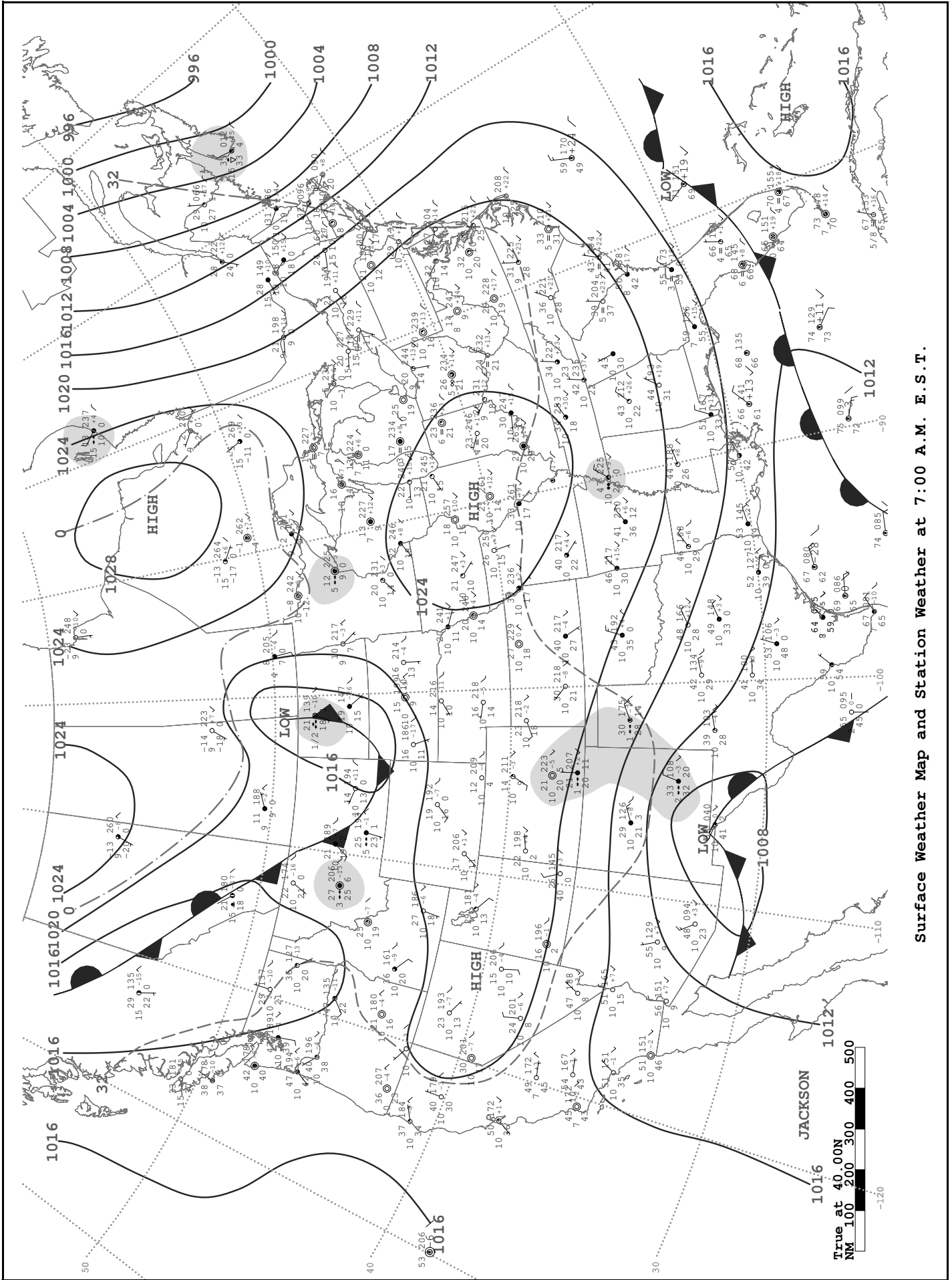
**Wind Direction**  
 Long Feather - 10 knots  
 Short Feather - 5 knots

**Wind Speed**

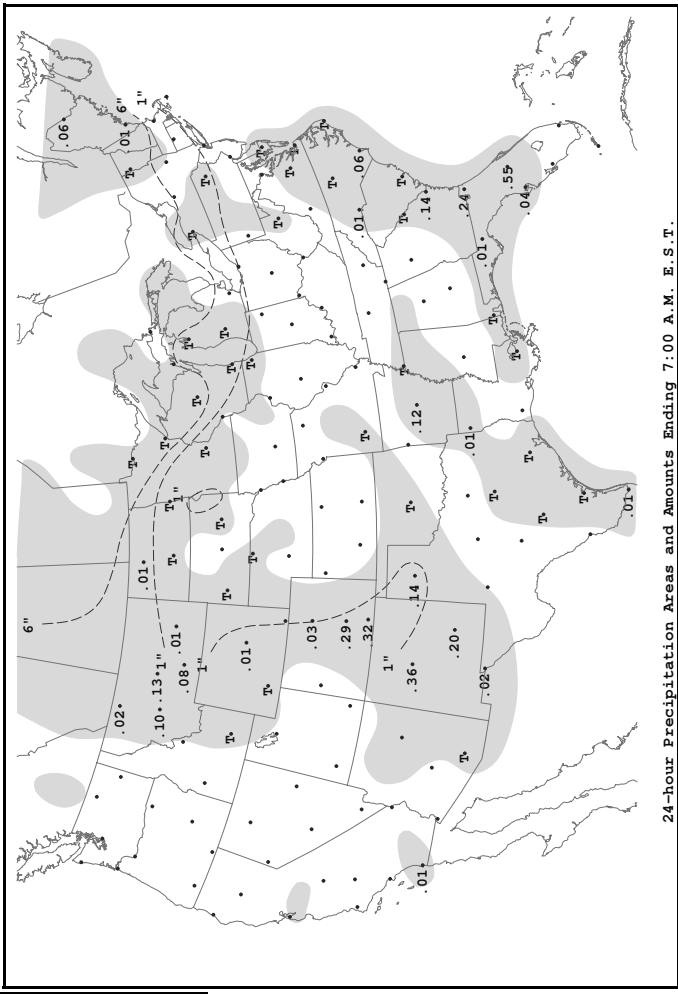
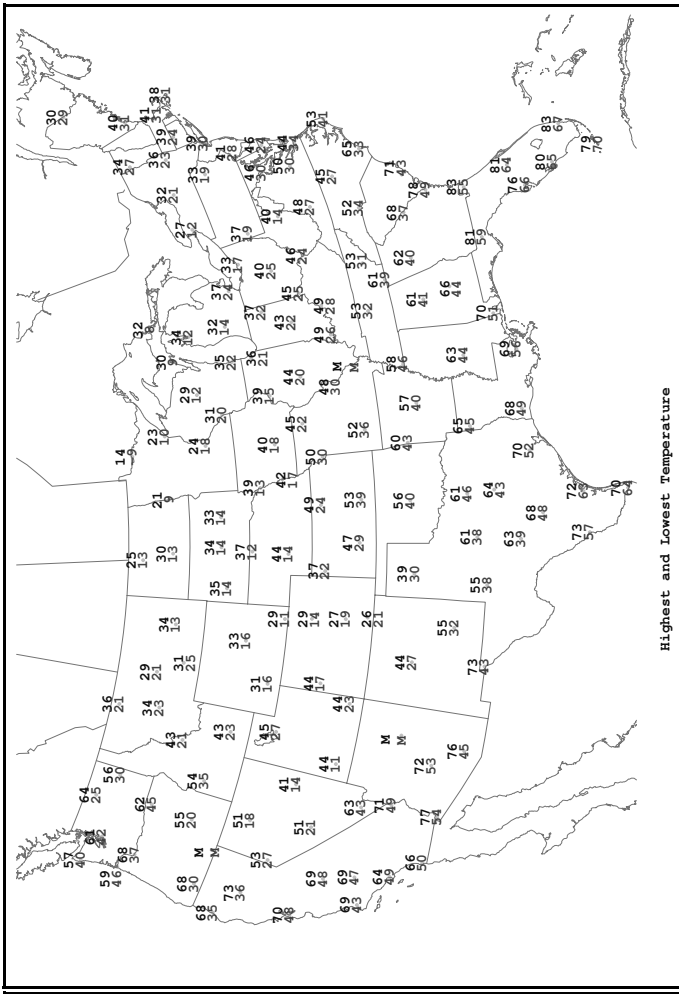
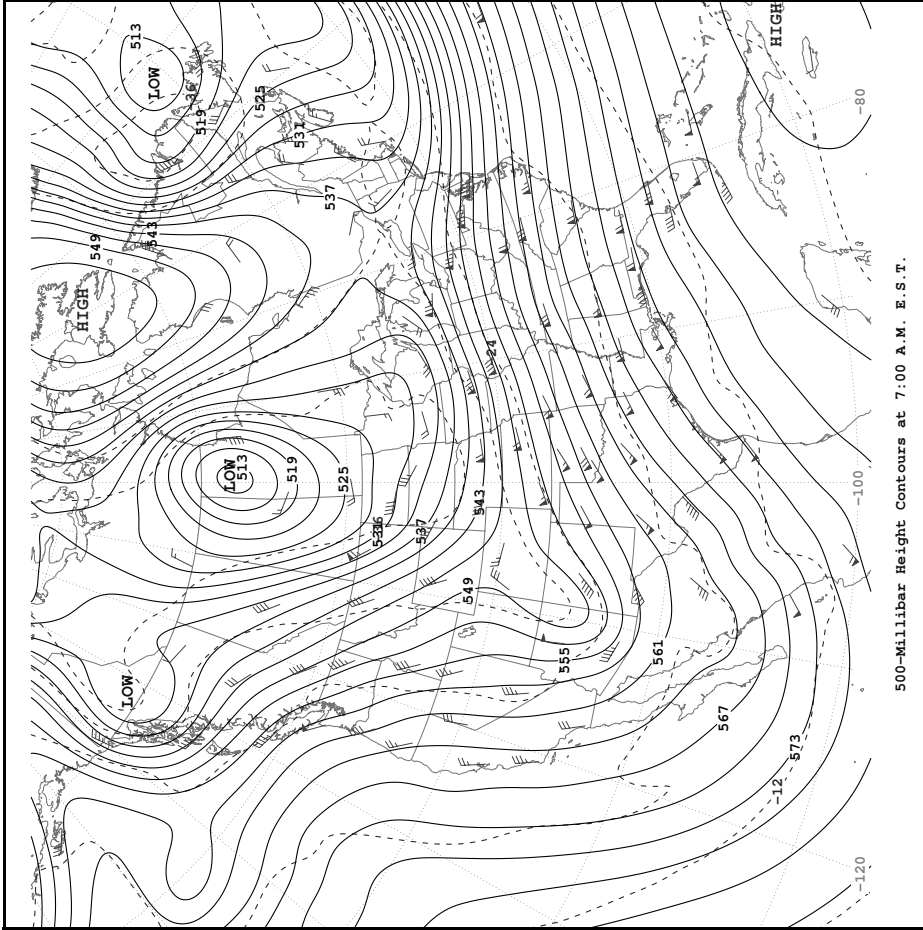
**Current Temperature (in °F)** — dd  
**Visibility (in miles)** — TT  
**Present Weather Symbol** — V  
**Dew Point Temperature** — WW  
**3-Digit Surface Pressure (in tenths)** — PPP  
**3 Hour Pressure Tendency (in tenths)** — PP a  
**6 Hour Total Precipitation (in hundredths of an inch)** — RR  
**Sky Cover** — Sky\_Cover

**Station Model**

# MONDAY, MARCH 14, 2005



Surface Weather Map and Station Weather at 7:00 A.M. E.S.T.



**Station Model**

Wind Direction ——— Wind Speed  
 Long Feather - 10 knots  
 Short Feather - 5 knots

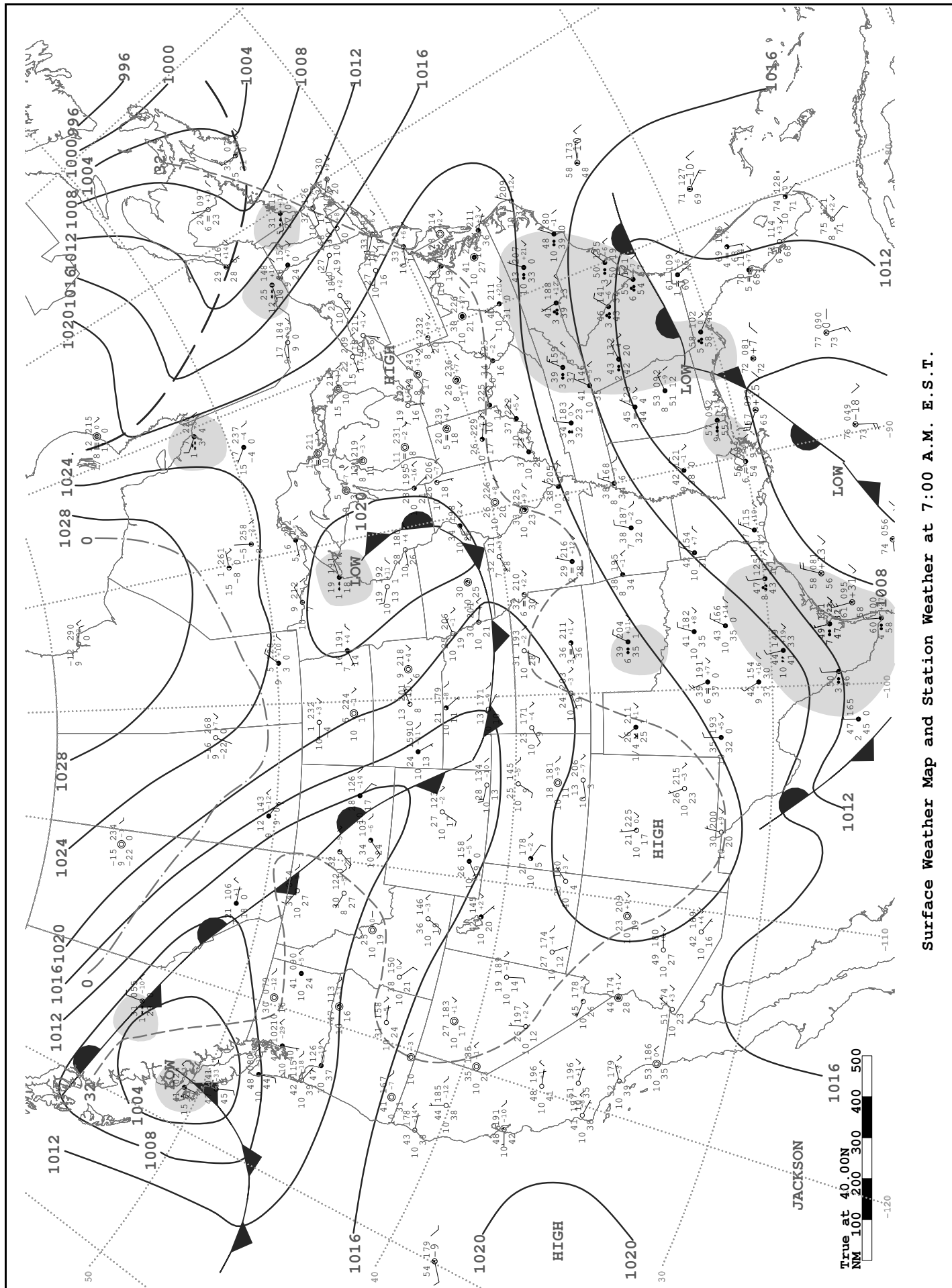
Current Temperature (in °F) — dd ——— ft  
 Visibility (in miles) — V ———

Present Weather Symbol ——— PP ———  
 3-Digit Surface Pressure (in tenths). Ex:  
 989 = 998.9mb  
 012 = 1001.2mb

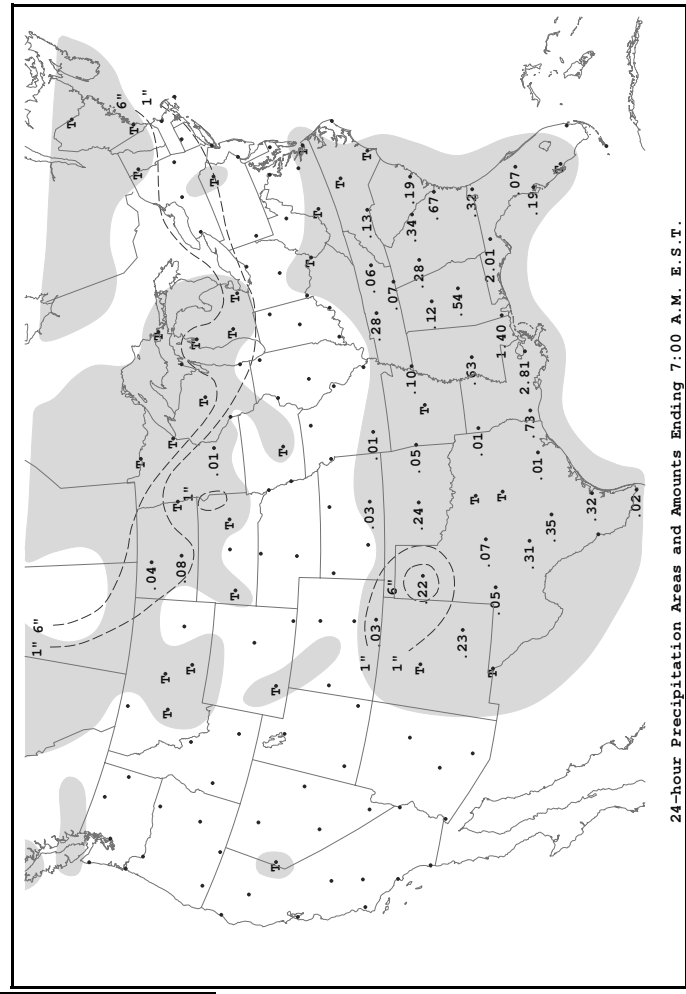
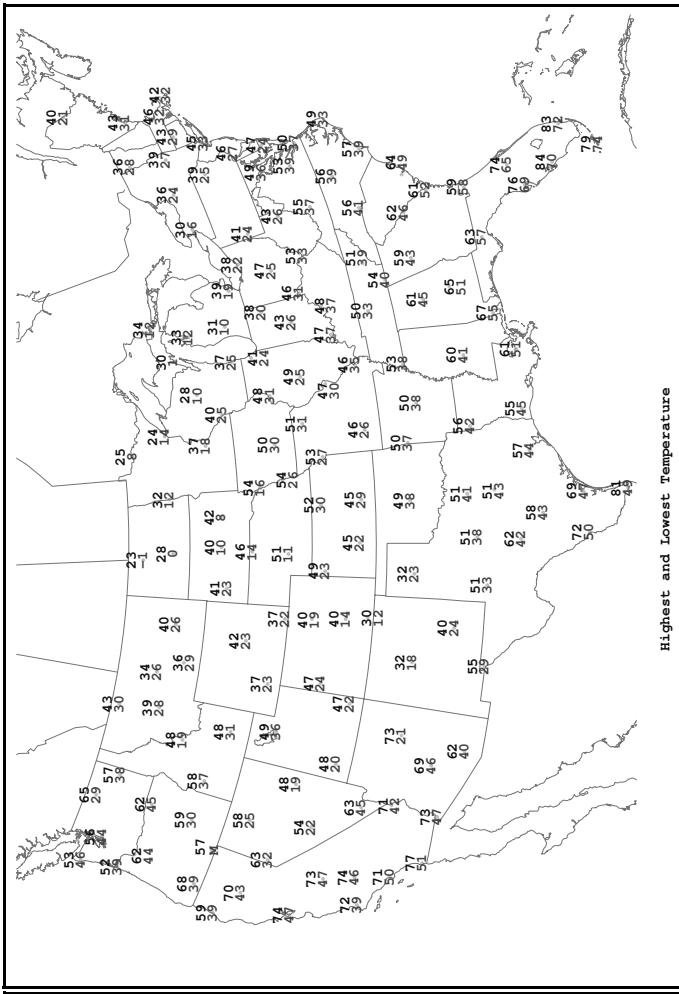
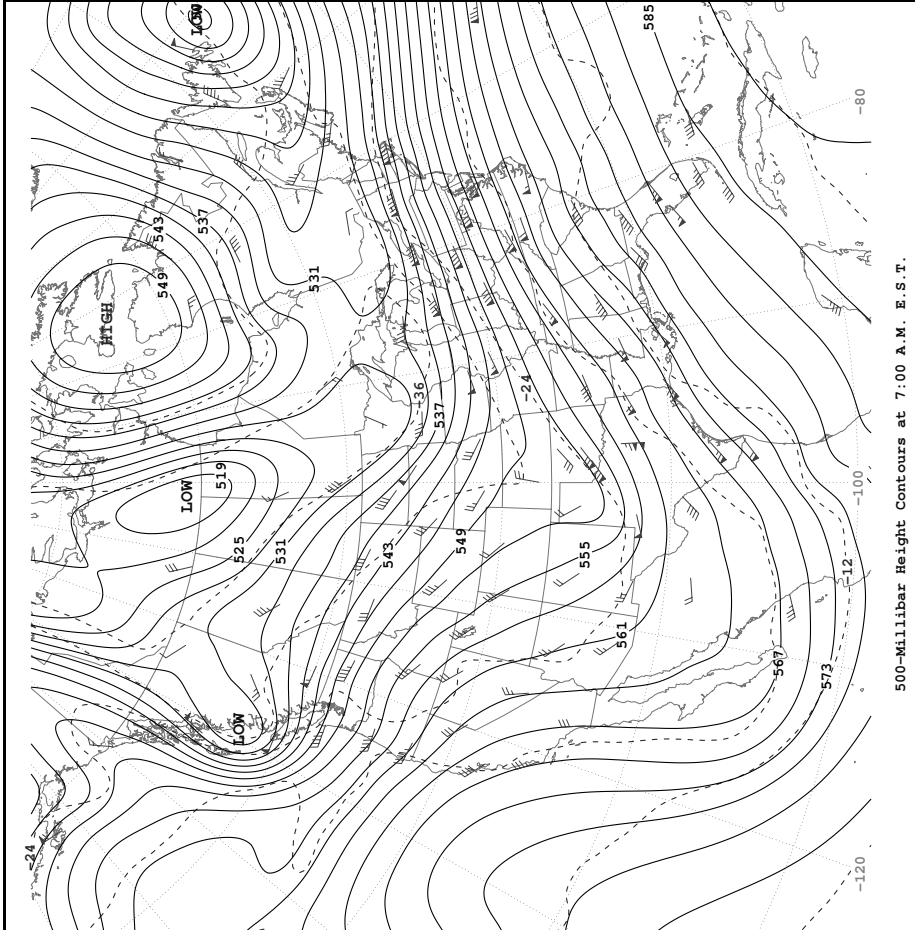
Dew Point Temperature ——— TD ———  
 3 Hour Pressure Tendency (in tenths)  
 6 Hour Total Precipitation (in hundredths of an inch)

————— Sky\_Cover

# TUESDAY, MARCH 15, 2005



Surface Weather Map and Station Weather at 7:00 A.M. E.S.T.



**Station Model**

Wind Direction: **F** (Long Feather - 10 knots, Short Feather - 5 knots)

Current Temperature (in °F): **dd**

Wind Speed: **ff**

Visibility (in miles): **V**

3-Digit Surface Pressure (in tenths): **PPP**

Ex: 999 = 998.9mb, 012 = 1001.2mb

Present Weather Symbol: **●**

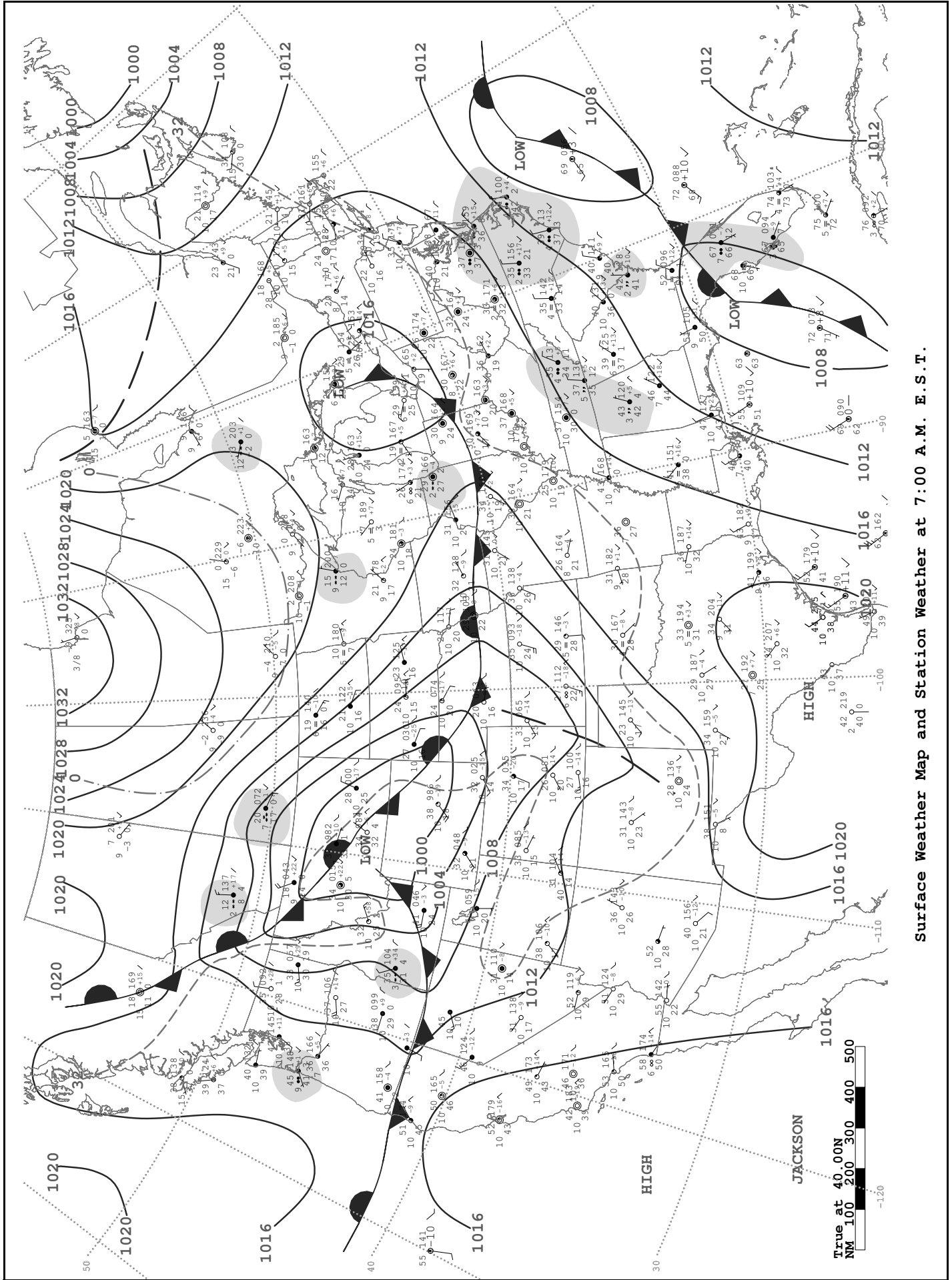
Dew Point Temperature: **TT**

3 Hour Pressure Tendency (in tenths): **PP a**

6 Hour Total Precipitation (in hundredths of an inch): **RR**

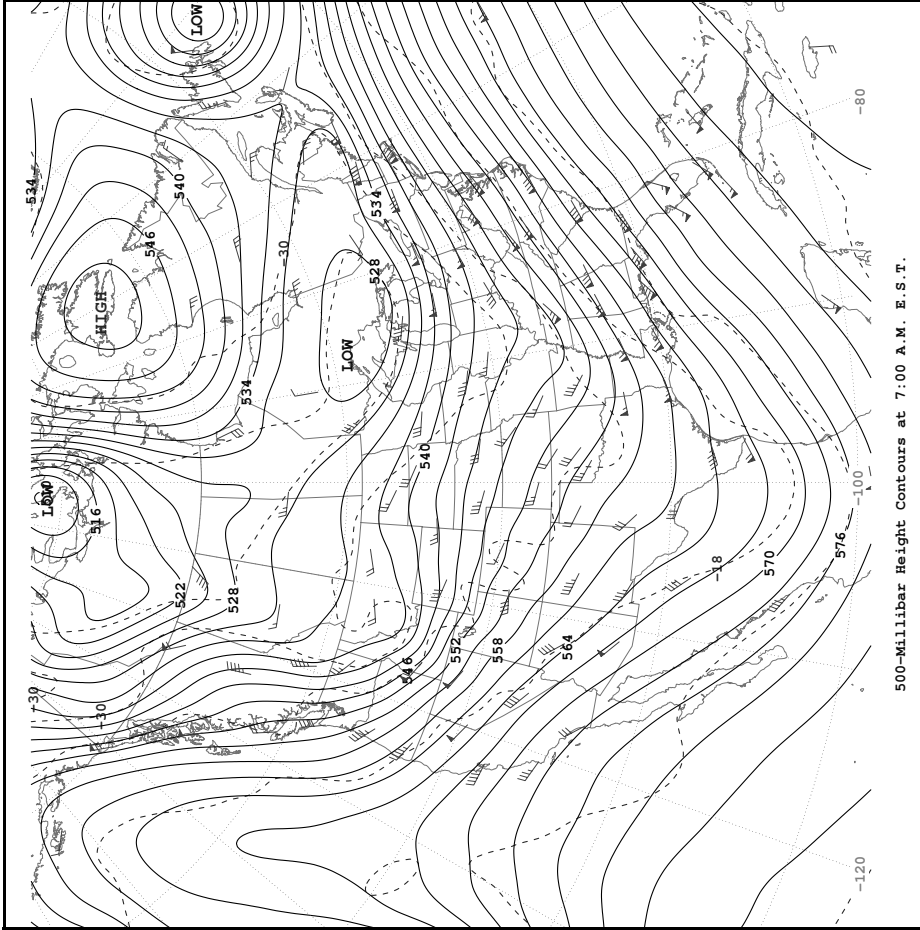
Sky Cover: **—**

# WEDNESDAY, MARCH 16, 2005

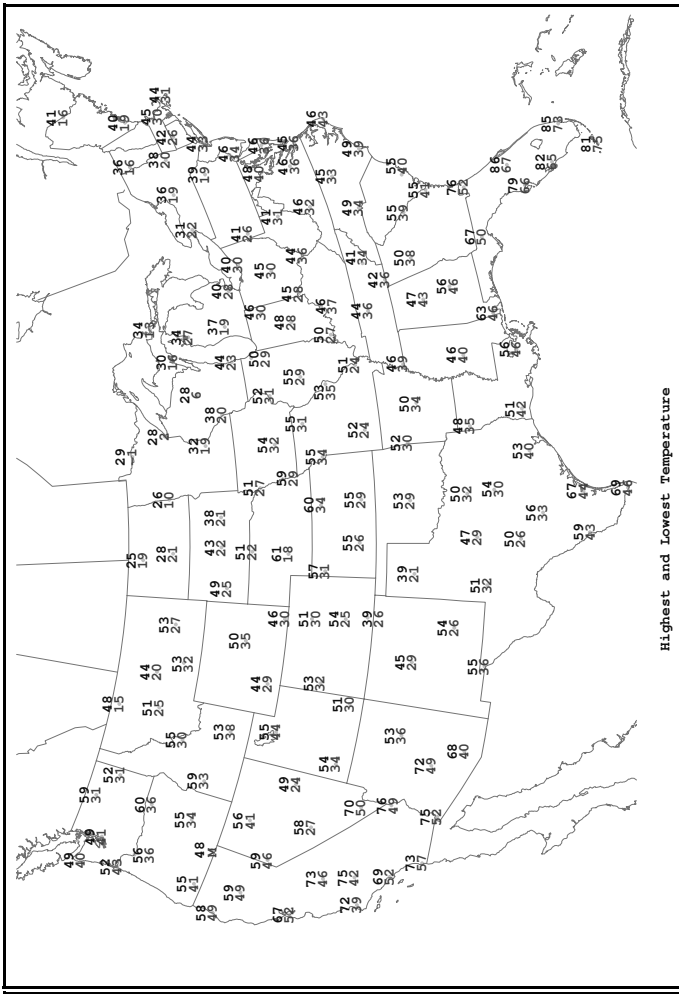


Surface Weather Map and Station Weather at 7:00 A.M. E.S.T.

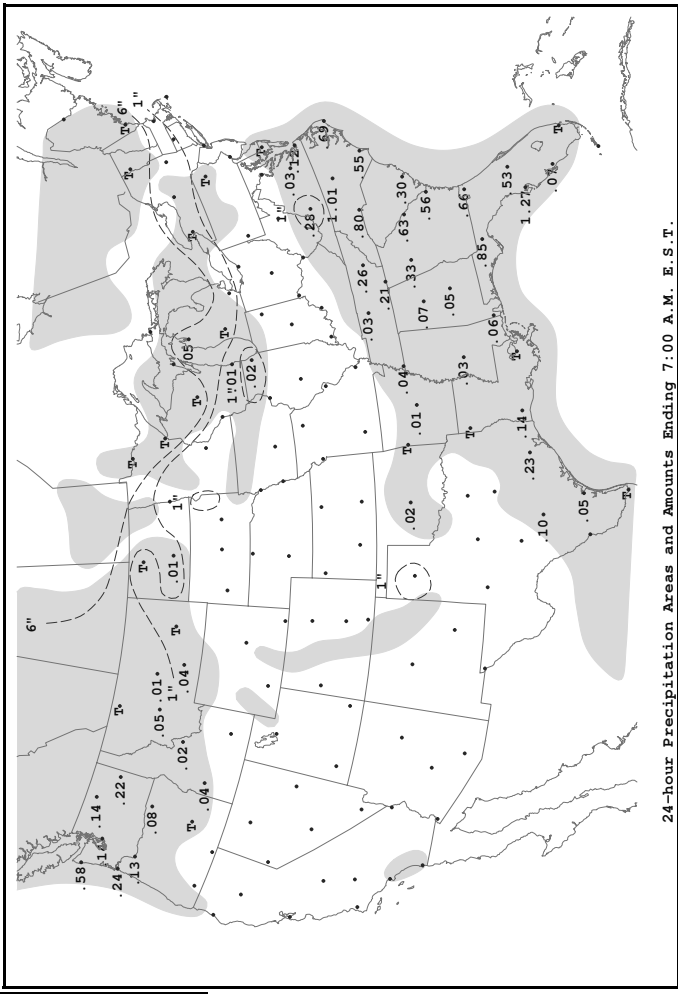




500-millibar Height Contours at 7:00 A.M. E. S. T.



Highest and Lowest Temperature



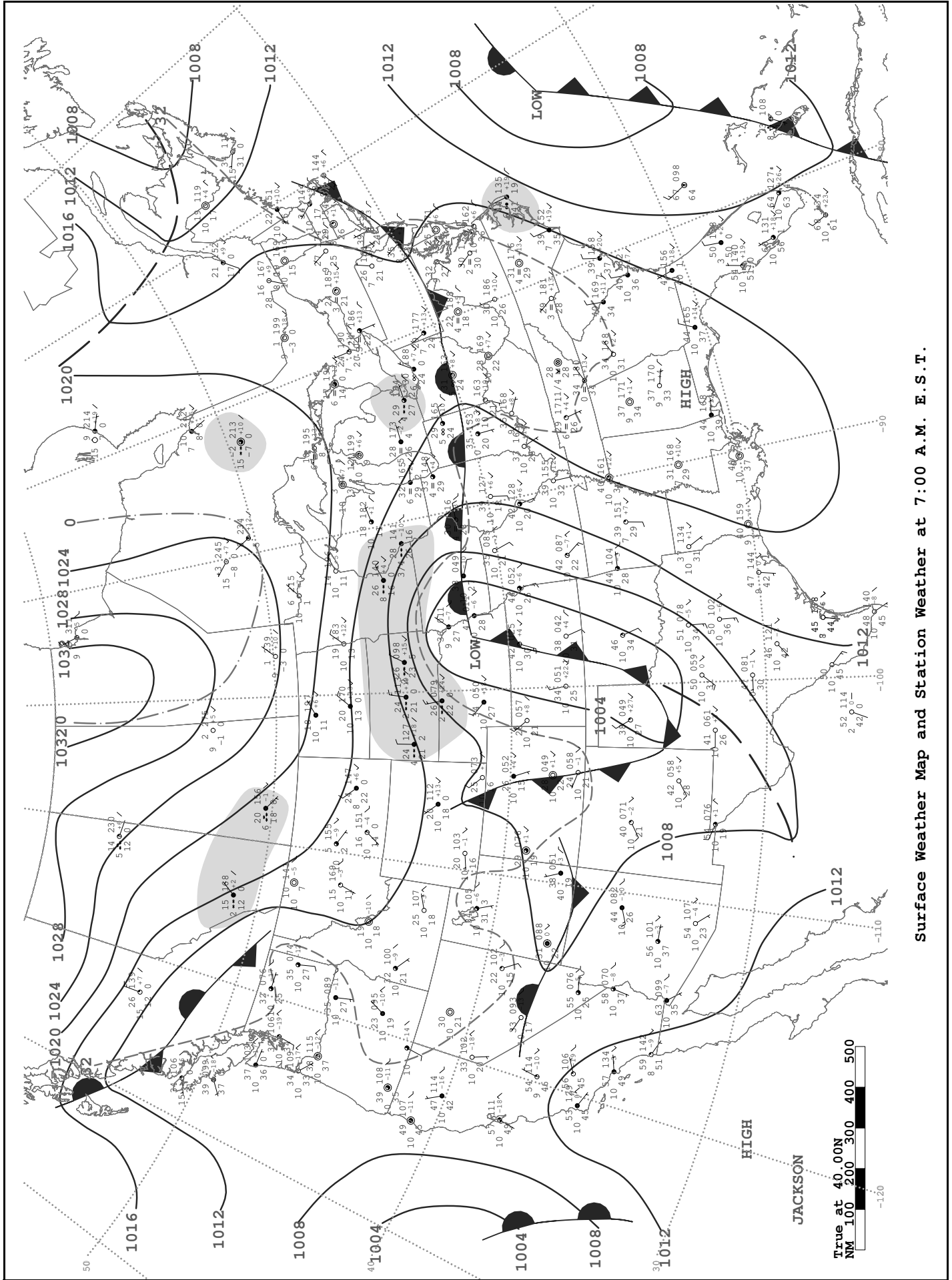
24-hour Precipitation Areas and Amounts Ending 7:00 A.M. E. S. T.

**Station Model**

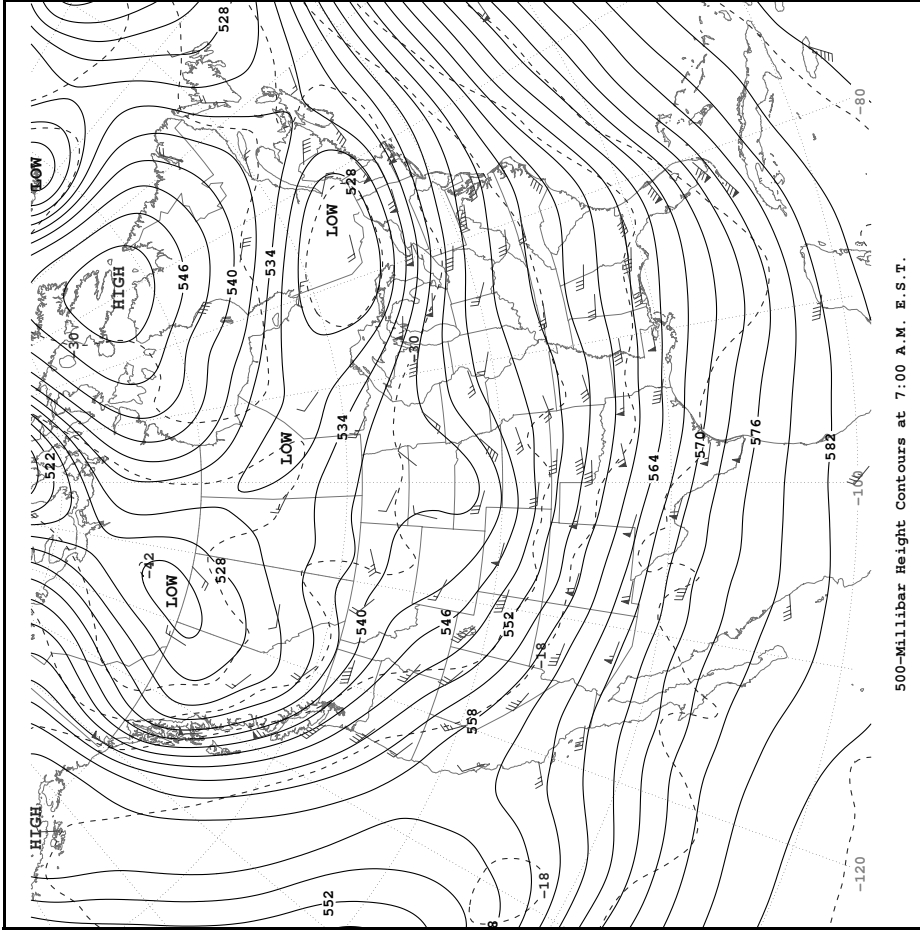
Wind Direction ——— Wind Speed  
 Long Feather - 10 knots  
 Short Feather - 5 knots

Current Temperature (in °F) — dd ——— ft ———  
 Visibility (in miles) ——— V ———  
 Present Weather Symbol ——— TT ———  
 Dew Point Temperature ——— WW ———  
 3-Digit Surface Pressure (in tenths) Ex: 989 = 998.9mb, 012 = 1001.2mb  
 3 Hour Pressure Tendency (in tenths) ——— PP ———  
 6 Hour Total Precipitation (in hundredths of an inch) ——— PP a ———  
 Sky Cover ——— RR ———

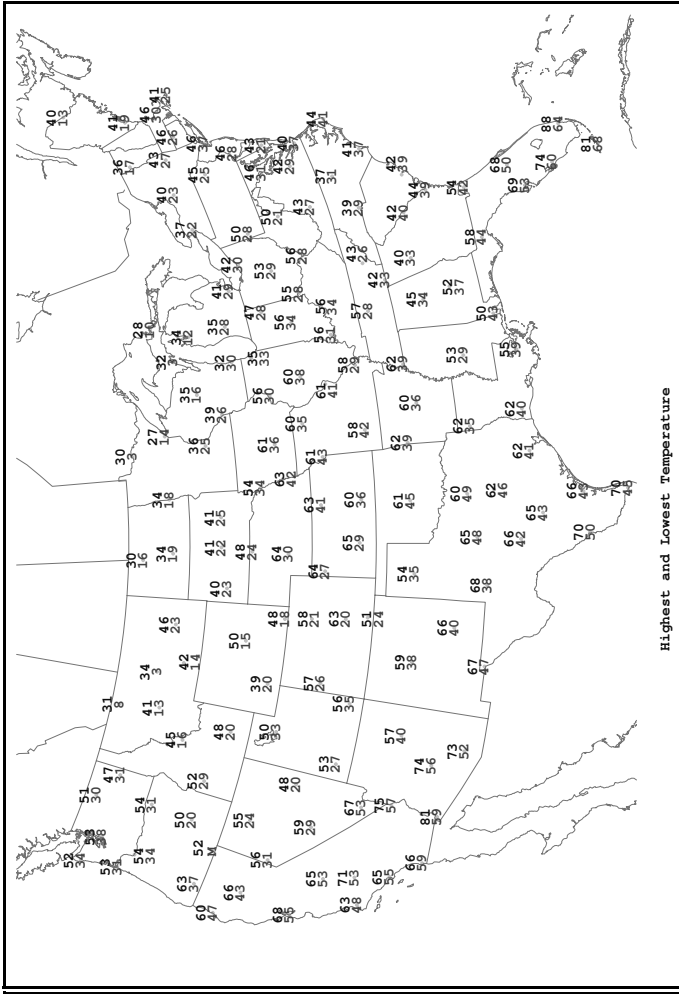
# THURSDAY, MARCH 17, 2005



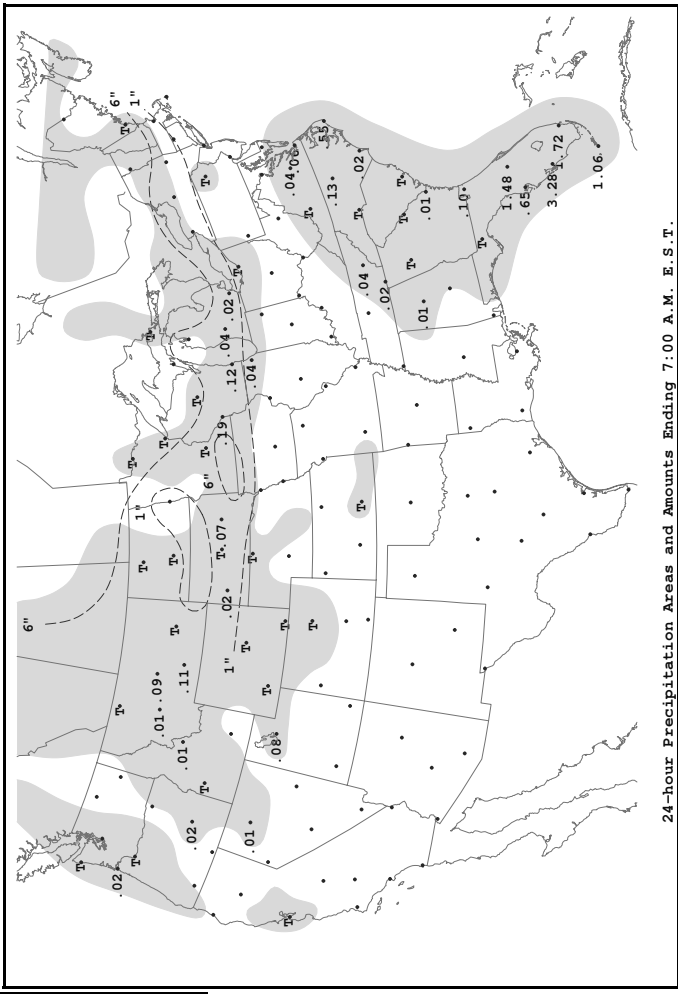
Surface Weather Map and Station Weather at 7:00 A.M. E.S.T.



500-Millibar Height Contours at 7:00 A.M. E. S. T.



Highest and Lowest Temperature

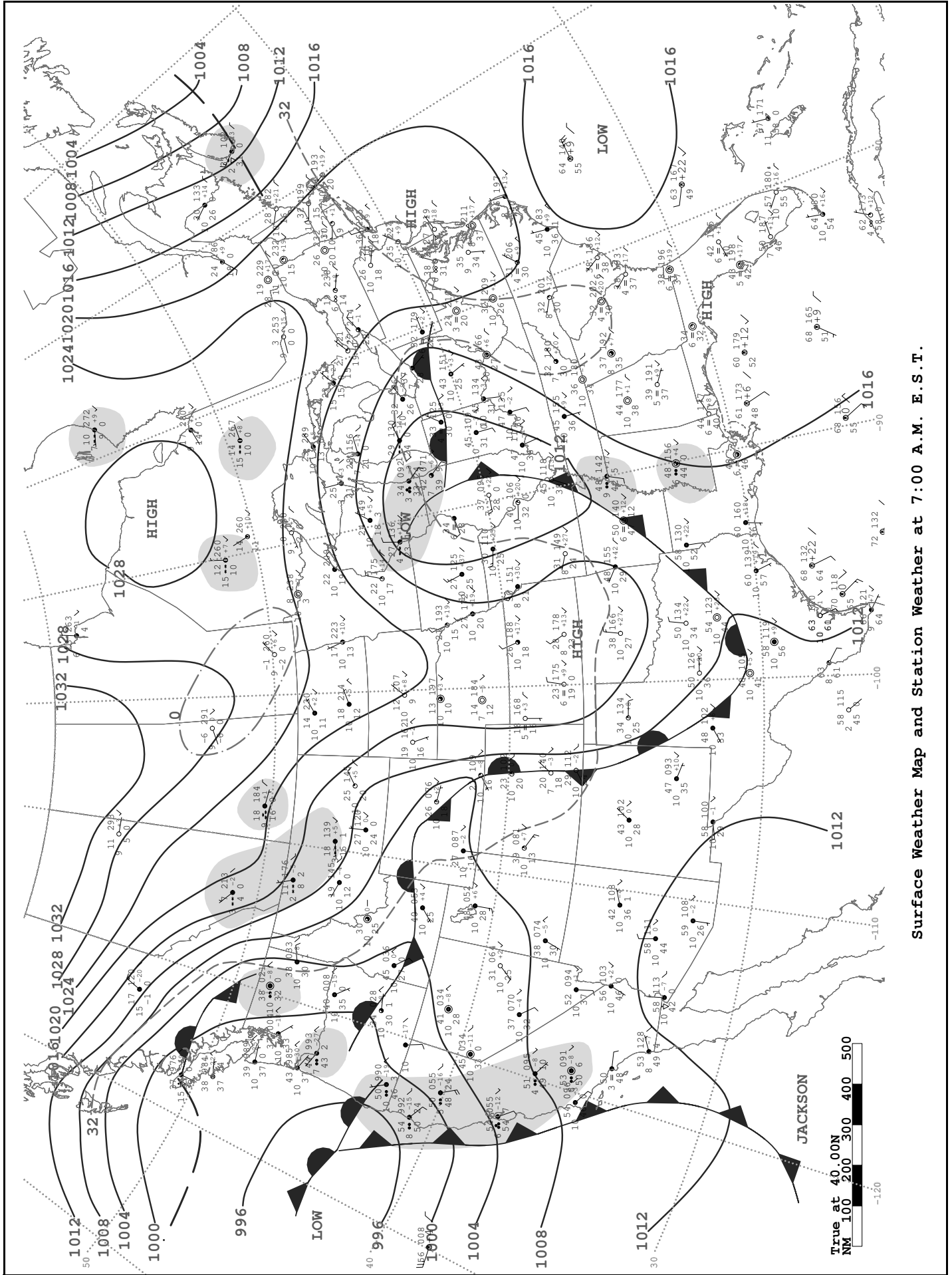


24-hour Precipitation Areas and Amounts Ending 7:00 A.M. E. S. T.

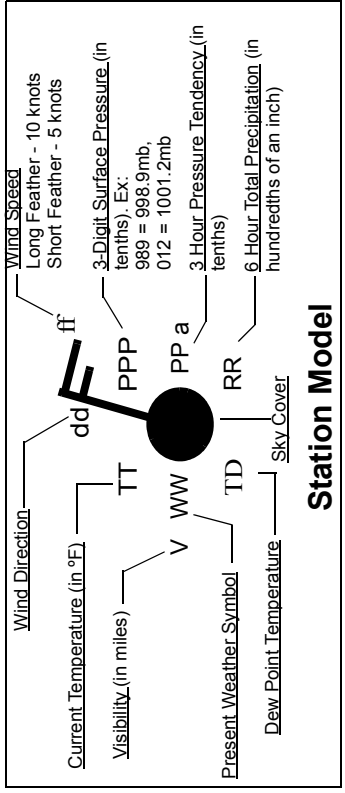
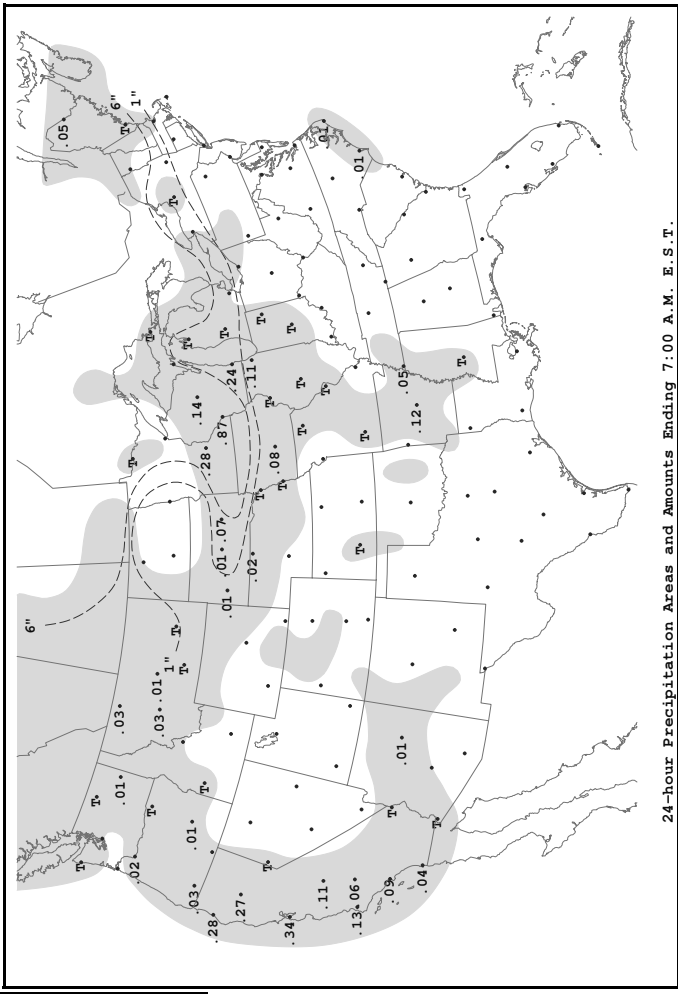
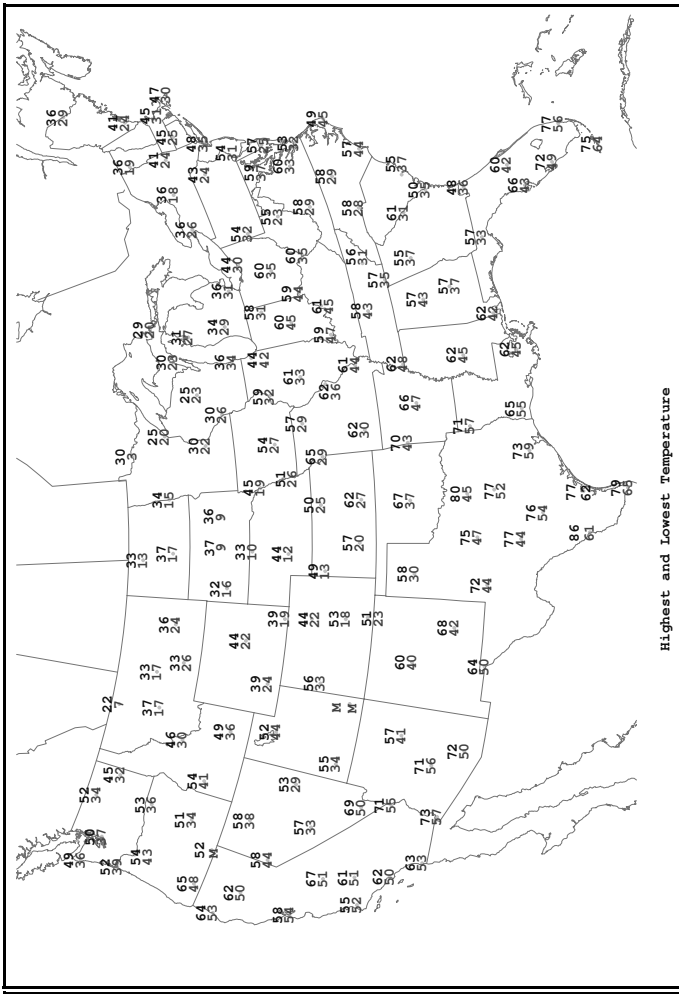
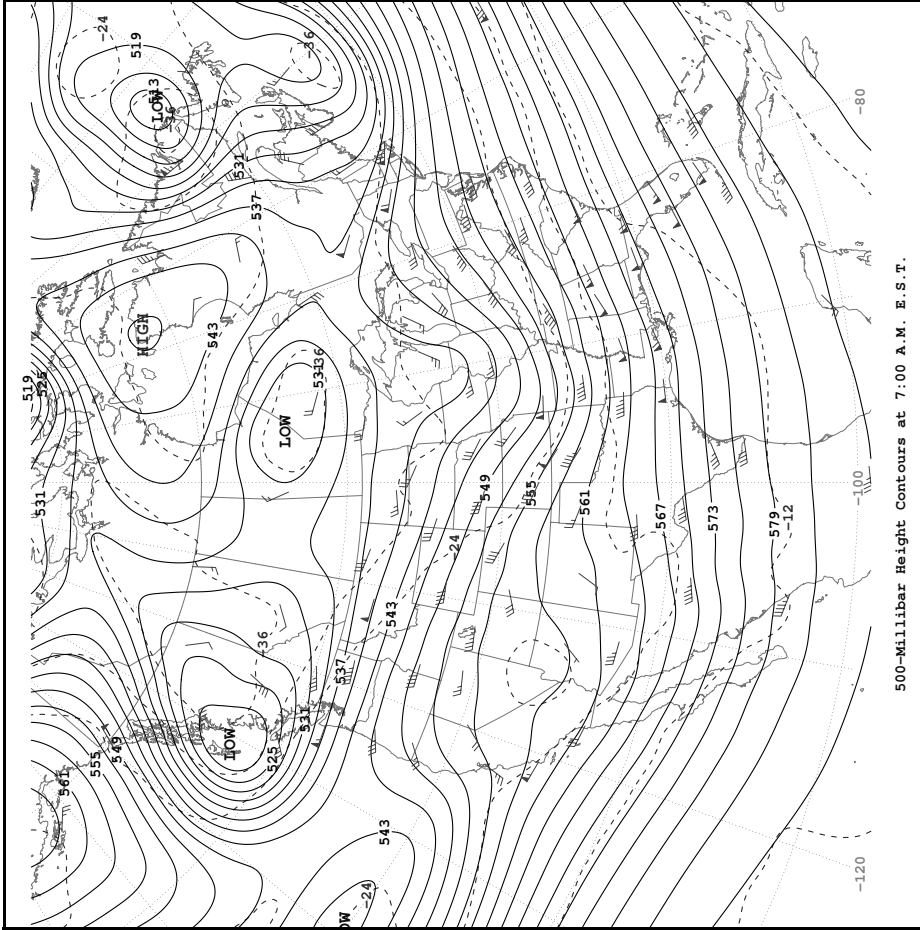
Wind Direction	Wind Speed	ft
Current Temperature (in °F)	Long Feather - 10 knots	PPP
Visibility (in miles)	Short Feather - 5 knots	
Dew Point Temperature	3-Digit Surface Pressure (in tenths). Ex: 989 = 998.9mb, 012 = 1001.2mb	PP a
Present Weather Symbol	3 Hour Pressure Tendency (in tenths)	RR
Sky Cover	6 Hour Total Precipitation (in hundredths of an inch)	

**Station Model**

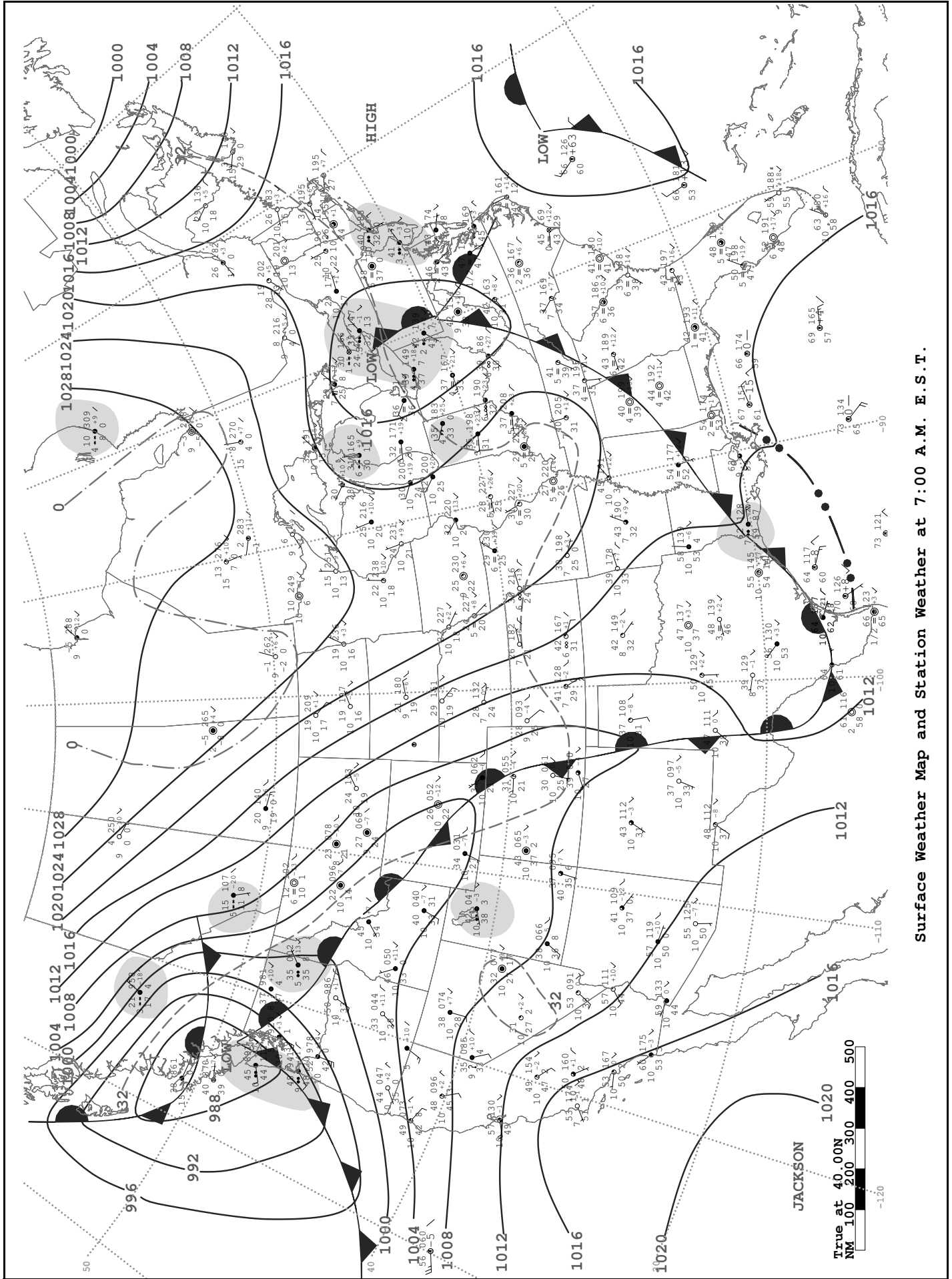
# FRIDAY, MARCH 18, 2005



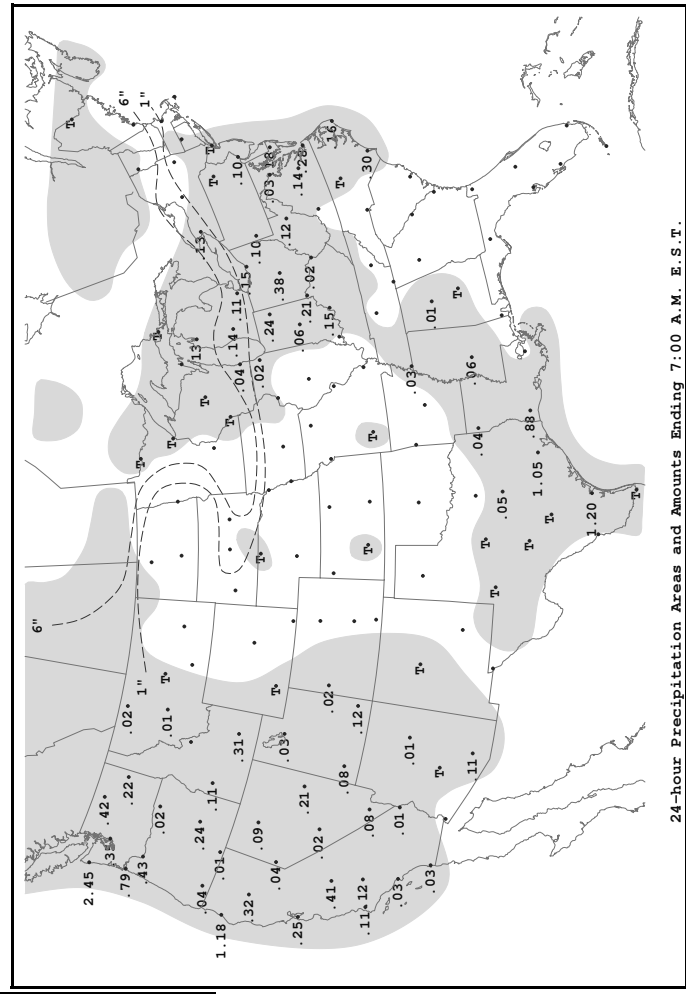
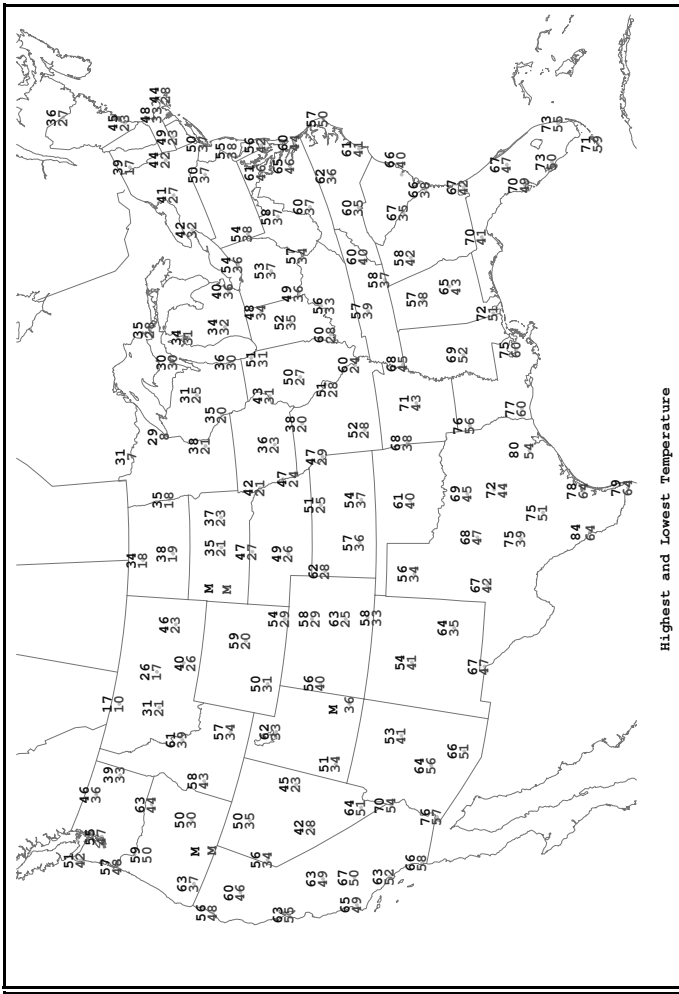
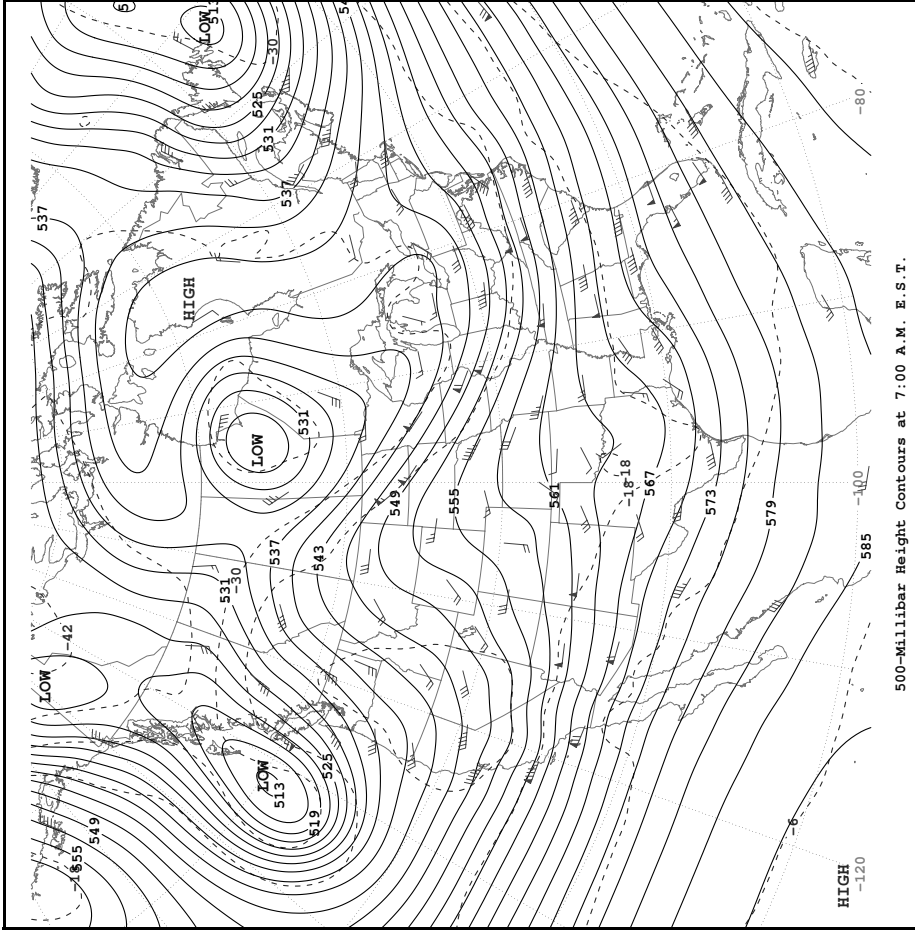
Surface Weather Map and Station Weather at 7:00 A.M. E.S.T.



# SATURDAY, MARCH 19, 2005



Surface Weather Map and Station Weather at 7:00 A.M. E.S.T.



**Station Model**

Wind Direction: **W** — Wind Speed: Long Feather - 10 knots, Short Feather - 5 knots

Current Temperature (in °F): **66** — ft

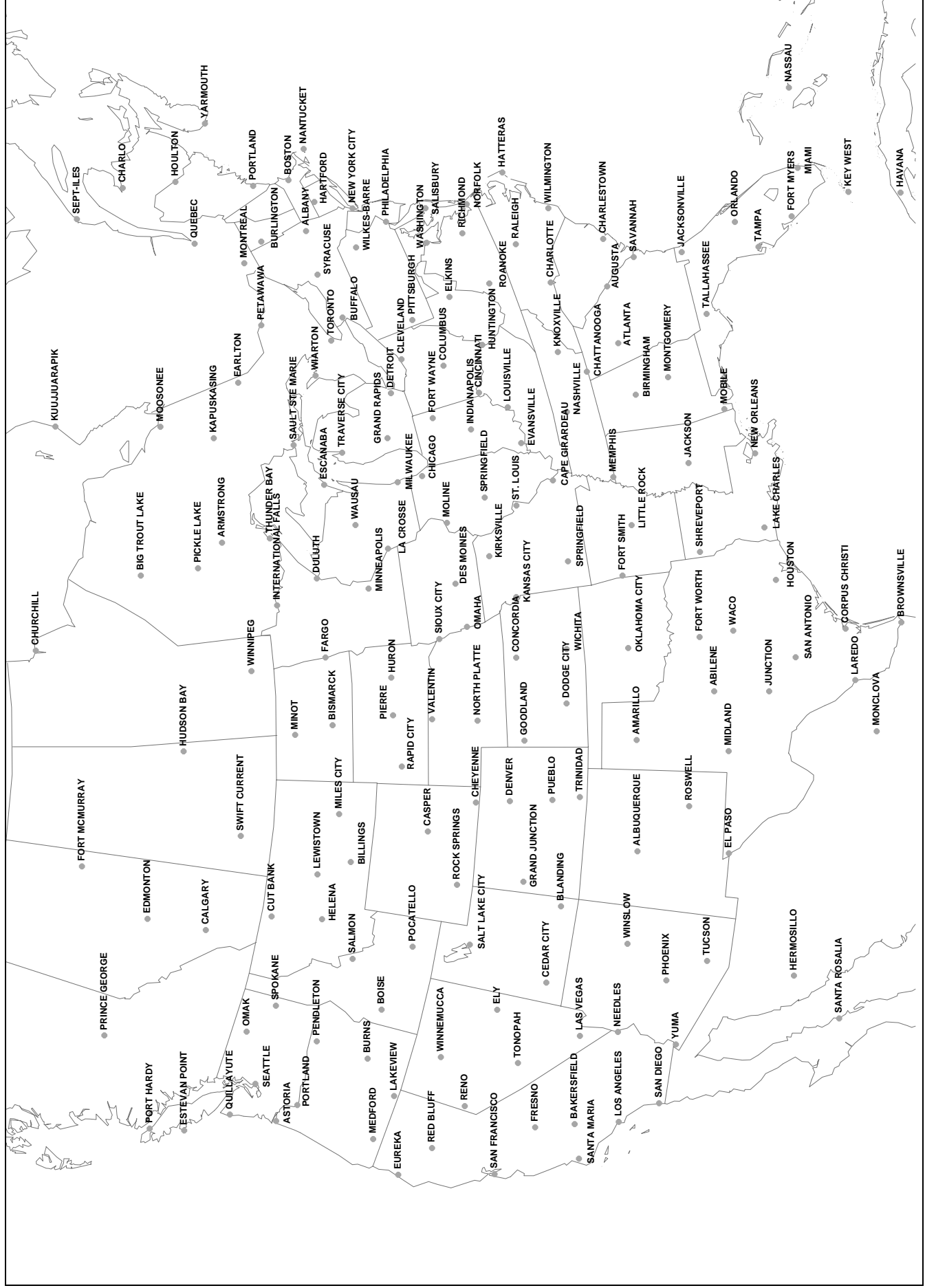
Visibility (in miles): **11** — TT — 3-Digit Surface Pressure (in tenths): Ex: 989 = 998.9mb, 012 = 1001.2mb

Present Weather Symbol: **PP** — PPp — 3 Hour Pressure Tendency (in tenths)

Dew Point Temperature: **58** — TD — RR — 6 Hour Total Precipitation (in hundredths of an inch)

Sky Cover: **03** — Sky Cover

# SUNDAY, MARCH 20, 2005



**Daily Weather Map Station Names and Locations**