

# The Village Friend

 national accelerator laboratory

Operated by Universities Research Association Inc.  
Under Contract with the United States Atomic Energy Commission

Vol. 5 No. 46

December 27, 1973

## NAL ATRIUM OFFERS INTERESTING PLANT STUDY

Employees and visitors enjoy walking through The Atrium on the main level of the NAL Central Laboratory Building. The Atrium extends from just inside the main entrance door to the edge of the serving area of the cafeteria. It provides a pleasant dining atmosphere as well as a striking view from the upper floors of the building.

The brick floor of The Atrium is built in several levels with steps and walkways planned to surround the planters. Planters containing the largest trees extend down some 20 feet to the earth beneath the building. Planters for the annuals and smaller plants are about three feet deep.

The choice of species and varieties of plantings for The NAL Atrium was the result of a good deal of research by DUSAF architect William Rohe. After consultation with an expert from the Chicago Botanical Gardens, Dr. Francis de Vos, Mr. Rohe and horticulturist Jerry Leider traveled to Florida last August to purchase most of the larger trees which were then dug and balled. After an 8-week acclimation period, they were brought to NAL by truck and installation began about October 1, 1973.

All varieties of trees are of broadleaf, evergreen species. They do not require a dormant stage. Their origins are either tropical or Australian and they can therefore survive with less than maximum sunshine. A small pool in the Atrium, the humidity of the heating system, and regular sprinkling will bring sufficient humidity for the plants to do well.

Largest of the trees are the ficus species, some of which are now 35-40 feet tall with ample room in the open space of the building to reach maximum heights in the future. The low spreading varieties will soon grow over the edges of the brick planter boxes. According to Mr. Rohe, the soil mixture in all of the planters is in 3 parts -- one each of local black earth, perlite, and peat moss.

Across the front of The Atrium is space for annual varieties to be inserted. During the Fall months, yellow chrysanthemums were used. For the Holiday Season, poinsettias appeared. About Easter time, and again in the summer, varieties appropriate to the season will be found. George Doyle, head of NAL Plant Services and a serious amateur gardener, will supervise the planting of annuals. Mr. Lieder, of Tropical Plant Rentals, Inc., will maintain and guarantee the other plantings.

The diagram on the reverse side of this page was prepared by Mr. Rohe in response to many inquiries from green thumbs interested in identifying the plantings by name. Not shown are planters on the crossovers of the second, third, and fourth floors where English ivy and Swedish ivy are planted.

All of the plants need your encouragement. Sing, coo, whisper, as you will, to the newest life on the NAL site. Bill Rohe suggests that if you are interested in further research on such plants, you consult The Exotica 3 Plant Manual (by Arthur Byrd Graf, published by Roehis Co., Rutherford, N. J., 1970), available at the Morton Arboretum. This large volume is available in condensed versions.



..Schefflera, NAL Atrium..

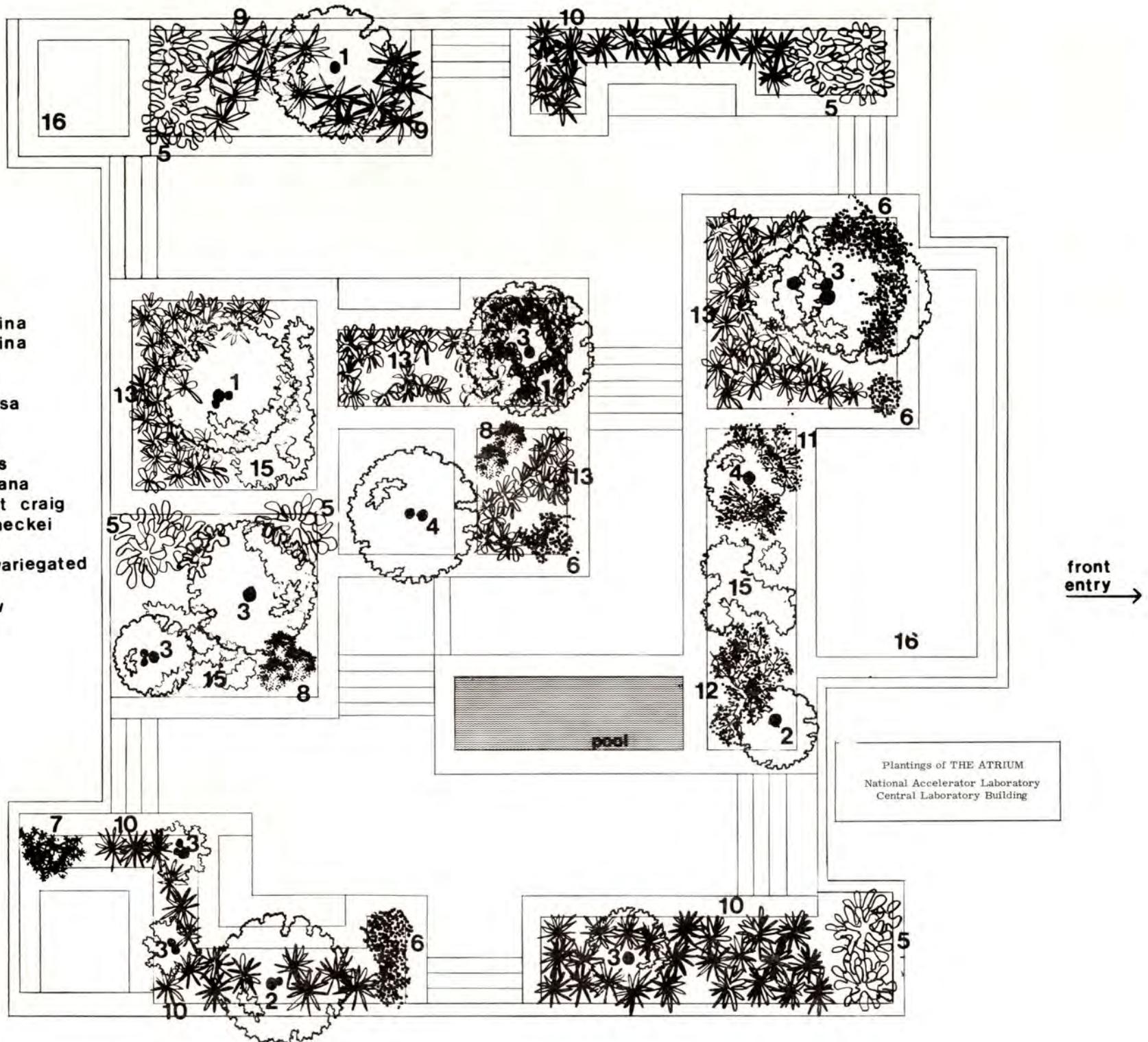


..Ficus recently planted in Central Lab lobby....

\* \* \* \* \*

- 1 *Ficus benjamina*
- 2 *Ficus benjamina*  
exotica
- 3 *Ficus nitida*
- 4 *Ficus rubiginosa*
- 5 *Schefflera*
- 6 *Hibiscus*
- 7 *Aralia chinesis*
- 8 *Aralia balfouriana*
- 9 *Dracaena janet craig*
- 10 *Dracaena warneckei*
- 11 *Pittosporum*
- 12 *Pittosporum*  
variegated
- 13 Boston fern
- 14 Wandering jew
- 15 Grape ivy
- 16 Annuals

← cafeteria



## NEWS FROM THE NAL MACHINE SHOP

David "Tom" Wilson became the Machine Shop's fourth apprentice to complete training in the NAL Machine Shop's apprentice program. Wilson started the program in October, 1969, attending school two days a week at the Argonne National Laboratory, and logging 8,000 hours on-the-job in eight different aspects of machine shop work. He became an Instrument Machinist following the completion of his apprenticeship.

Three other Machine Shop employees completed apprenticeships in 1973. Nelson Sample and Larry Chiplis also became Instrument Machinists. Roger Hiller became an Instrument Welder. Sample was a member of NAL's first TAT class and started his apprenticeship in February, 1969, with credit for the training he received at Oak Ridge. Chiplis came to NAL with machine shop experience, for which he received credit in his apprentice program. The welders' apprenticeship, a shorter program, was completed by Hiller in December, 1971.

According to Bill Jones, head of the Machine Shop, the apprentice program offers young men just out of high school a chance to receive a well-rounded training in machine shop skills. In the work done at a research laboratory, a machinist follows his job from machine to machine. He therefore needs a wide range of experience to fill the requirements.

-----

The Machine Shop recently bid farewell to Walter Gardziella who had worked at NAL since September, 1969, and is now retired. Walter gained his machine shop background originally from working with his father. At NAL, he started in the Central Machine Shop, then worked in the tech shop for the Beam Transfer Group, later, the Accelerator Division.

Walter and his wife begin a second career soon when they travel to Rhodesia to work with their daughter in a missionary complex there. Walter will give much-needed assistance in maintaining the complex's mechanical equipment.

Or, he may find time to do some African-style fishing, his favorite sport. But it wouldn't be surprising to find him directing a choir, as he did in Wheaton for many years.

"It is very typical of Walter to be thinking of helping others," according to Bill Jones. "He is the fellow you can always count on for help, as many people at NAL know."

Walter's colleagues honored him at a luncheon and presented him with a unique sculpture shown at right.

(Photos by NAL photographers)

\*\*\*\*\*



... (L-R) C. Marofske, W. Jones, Tom Wilson, Al Pearl (Argonne National Laboratory), Wilson's instructor...



... (L-R) Vic Horvath (IAM), W. Jones, N. Sample, L. Chiplis, R. Hiller, C. Marofske, H. Hinterberger...



... Walter Gardziella (R) and, at left, sculpture given by his colleagues, "50 years wrestling a crank"...

## SAFETY CONTEST WINNERS ANNOUNCED AT MAGNET FACILITY

On Friday, November 30, Steve Barath, Senior Technician and Supervisor of the Component Fabrication Group at the Magnet Facility, accepted the Magnet Facility Safety Award on behalf of his group. The group was selected winner of the safety and cleanliness contest conducted at the Facility during November. The award was presented by Will Hanson, Manager of the Magnet Facility, based upon the inspection and selection of Vince Zernoski, Safety Engineer from the NAL Safety Office. This contest was part of a continuing effort by all Facility personnel to enhance Industrial Buildings #1 and #2.

In addition to the wall plaque award, to be re-awarded periodically, each member of Barath's group will receive an individual prize from the Safety Office. Zernoski congratulated the group for its outstanding achievement and progress. "Safety is everybody's business," he told them. "This contest helped to emphasize that, and the progress here is impressive."

Hanson originated the contest idea, with the winner determined on the basis of safety, organization, condition of equipment, over-all equipment and cleanliness. He noted that he was extremely pleased with the results. "It proved to be a very worthwhile effort and people seemed to enjoy competing with one another. We now have a safer and more attractive Facility for building better magnets."

\* \* \* \* \*

### CLASSIFIED ADS

FOR SALE - 1967 Ford Galaxie 500, 289 engine, hard top. Good condition, \$600.00 or best offer. Bud Hamm, Ext. 3171 or 851-6361.

FOR SALE - 1973 Plymouth Satellite Custom, Power brakes and steering, 318V8 2BBL, \$2800. or take over payments. Call Ernie, Ext. 3210.

FOR SALE - 5 Pirelli Radial Tires; 4 tires in excellent condition, 1 fair; size 6.50-14. Call Dick Figlik, Ext. 3287.

FOR SALE - Snowblower, 3 years old, Sears & Roebuck, 3½ h.p., scarcely used. \$80.00 Call Walter Pelczarski, Ext. 3160.

FOR SALE - Heathkit Solid State VOM, Model IM25. Call L. Wahl, Ext. 3734.

FOR SALE - New Panasonic TV's and Stereos at a discount price. Call Don Mendenhall, Ext. 3724, or 896-9308.

FOR SALE - 7 foot Starlite Stainless Steel Christmas Tree, excellent condition, \$25.00. Revolving musical, mirrored stand for Christmas tree, \$40.00. Three "Eyeball" Spotlights, \$20.00. Call M. Morgan at 448-1838.

FOR SALE - Miller Skis, used twice. Original cost \$75.00. Will sell for \$40. or best offer. Call Louise, Ext. 3728.

\* \* \* \* \*



*...Steve Barath (R), Supvr., Component Fabrication Group, Magnet Facility, receiving safety award from Will Hanson, Facility Manager, and Vince Zernoski (L), Safety Engineer...*



*...(L-R) S.Barath, C.Vickers, M.Brooks, K.C.Kirksey, J.Mendoza, Jr., R.Douglas, O. Whitby, V. Cotto, M. Sepulveda. (Junior Jones, absent)...*