

The Village Courier



fermi national accelerator laboratory

Operated by Universities Research Association Inc.
Under Contract with the Energy Research & Development Administration

Vol. 9 No. 2

January 13, 1977

SIGMA XI MEETS HERE JANUARY 25

The local chapter of Sigma Xi, the Scientific Research Society of North America, Inc., will meet for the first time at Fermilab on Tuesday, January 25. After dinner and a business meeting, the group will move to the Auditorium for a special lecture by Dr. Alfred K. Mann of the University of Pennsylvania, one of Fermilab's best-known experimenters. Dr. Mann will speak on the subject, "Exploring the Universe with a Neutrino Microscope."

Discussions between employees of the Amoco Research Center, Naperville; Fermilab, and Wheaton College, among others, stimulated organization of the local chapter of Sigma Xi about six months ago. The strong numbers of researchers in the western suburban area firmed the belief that the interdisciplinary participation which Sigma Xi offers could flourish here. The group has had two previous successful meetings and Fermilab opens its doors in the hope of stimulating further success for the group.

The Society of Sigma Xi's founding motto in 1887 was "Companions in Zealous Research," to reflect the founders' enthusiasm for the opportunity they saw ahead and for the cooperative spirit of research then, as it is now. Originally, membership was limited to degree-granting institutions. A parallel organization was founded in 1947 to provide the same type of organization for scientists and engineers working in industrial and government laboratories. The two groups merged in 1974, now having a membership of 120,600 nationally, in 237 chapters and 270 clubs. Sigma Xi's activities include a grants-in-aid program for researchers, its national lectureship program, publication of the *American Scientist* magazine, and award of the William Procter Prize for Scientific Achievement.

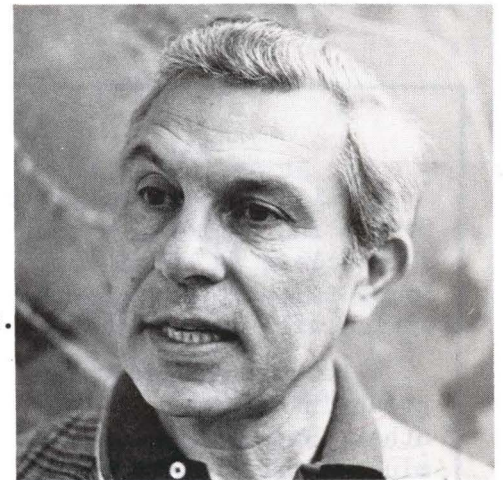
The local Sigma Xi chapter has elected to provide distinguished lecturers in the area. The meetings are open to everyone, without charge.

Prof. Mann is a scientist dedicated to the quest of a fundamental understanding of the processes of nature. He has participated in neutrino experiments at CERN, at the

(Continued on Page 2)

"While those whose hearts and souls are in their work, are coping with the great problems of Nature, let them remember that the ties of friendship cannot be investigated, but only felt. Let them join heart and hand, forming a brotherhood in Science and Engineering; thus promoting and encouraging by those strong, personal attachments of friendship, the highest and the truest advances in the scientific field. To lend aid and encouragement to those newer brothers, who likewise laboring in the same sphere are aspiring to honored position. And in collegiate halls to award an honor, which to scientific recipients shall signify, 'Come up higher.'"

...Constitution of Sigma Xi - 1887



...Prof. A.K. Mann...

SIGMA XI MEETING HERE (Continued)

Brookhaven National Laboratory, and at Fermilab during the past twenty years. His Experiment #1-A collaboration at Fermilab has been at the forefront of the dramatic, important new discoveries at Fermilab. Now in its third generation of running at Fermilab, the experiment has yielded information about the existence of an entirely new property of matter called "charm." The experimenters also believe they have found hints of still another state of matter beyond charm. These findings have been described in several articles which the collaborators have written in *Scientific American Magazine*. Dr. Mann will describe the universal implications of these new discoveries.

Arrangements for the Sigma Xi meeting at Fermilab are headed by Dr. Marvin Johnson of Research Services, with Don Young, Accelerator Division, and Dixon Bogert of the Physics Department. Reservations for the dinner are being taken by the Public Information Office, CL-1W, Ext. 3351. No tickets or reservations are necessary for the lecture. Questions about Sigma Xi membership may be directed to Dr. Johnson at Ext. 3168.

* * * * *

MIXED BOWLING LEAGUE STANDINGS at the half-way point of the season:

FIRST PLACE: Team #1 - Messrs and Ms - 46.5 wins, 21.5 losses
Ernie Ramirez, Art Streccius, Marion Richardson, Ed Steigmeyer,
Ed Pietras, Captain

SECOND PLACE: Team #13 - Helen's Heroes - 42 wins, 26 losses
Tom Hickey, Greg Urban, Tom Groves, Jack Jagger, Helen Ecker, Captain

THIRD PLACE: Team #7 - Ralph's Red Hots - 40 wins, 28 losses
Sherry Nila, Les Wahl, Ralph Wagner, Don Staley, Ralph Ovitt, Captain

* * * * *

CHESS TOURNAMENT NOW FORMING - Open to all employees and visitors. Sign up with Helen Ecker before January 21 - CL-1W - Ext. 3126. Matches will be played in the Central Laboratory Cafeteria.

* * * * *

EMPLOYEES NEWS AND NOTES

All group medical insurance claims can be submitted by using a one-page claim form. The employee's section of the claim form must be completed in full each time a new claim is submitted for reimbursement. The employee section is the portion found in the center to the bottom of the front page of the form. The Personnel Office will answer the questions at the top of the page.

Be sure to indicate if you or your dependents are covered under any other group insurance. If there is other coverage a claim must be submitted to the other company also. The two insurance companies must have these forms to determine which of the companies has primary responsibility for paying the claim. It also assures the employee of receiving all available benefits from the two insurance firms.

When you or your dependents are hospitalized, you must have your doctor complete the reverse side of the claim form as soon as possible. The employee then completes the employee's section and attaches all bills related to the claim. The bills should be itemized, giving description of the services rendered, not simply paid receipts. Submit everything to the Employees Benefit Office, CL-6E. Claim forms should not be submitted to the hospital. Obtain claim forms at the Personnel Office, receptionist, CL-6E. By following these steps, your claim can be processed quickly, avoiding unnecessary delays.

If you have any questions about preparing a claim or determining coverage, call the Employee Benefits Office, Ext. 3395.

Fermilab Auditorium Bicentennial Lecture Series Presents

"PANDORA'S BOX: THE DILEMMAS OF ENERGY POLICY"

by Kenneth E. Boulding

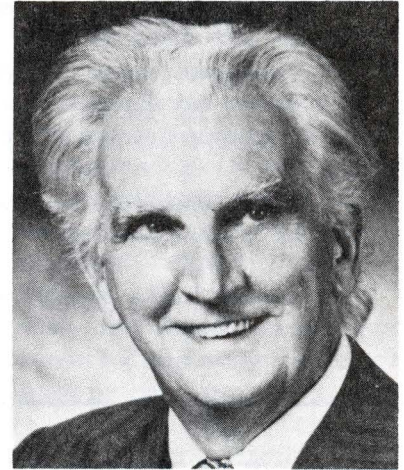
Friday, February 4, 1977 - 8:30 p.m.

Free admission - tickets necessary

Professor Boulding is on the staff of the Economics Department of the University of Colorado, where he is also one of the program directors of the Institute of Behavioral Science. He has received awards in both economics and the humanities. He has been a visiting professor in Jamaica, Japan, South Africa and Scotland and in several universities in the United States. He combines his broad knowledge of his own field with ethical and philosophical implications. Boulding is a member of the National Academy of Science's Nuclear and Alternate Energy Committee.

In addition to a prodigious list of technical works on economics, Professor Boulding has published verse.

The Fermilab Bicentennial Lecture Series is supported in part by the Illinois Humanities Council and the National Endowment for the Humanities. These free lectures are intended to bring together science and the humanities in a way that will show their interrelationship and make both more understandable.



...Prof. Kenneth Boulding...

Tickets for the Boulding lecture are available in the Fermilab Guest Office, CL 1-West, Ext. 3440.

* * * * *

ANY SUGGESTIONS?

Bright yellow suggestion boxes have been placed in the Fermilab Cafeteria, in the Atrium by the east elevator bank, in the Cross Gallery Control Room, and in the vending area in the Village.

Signed or unsigned suggestions for Fermilab improvements would be welcome from anyone who has something constructive to offer.

Suggestions are reviewed by John McCook, Associate Director for Administration, and by R.R. Wilson, Director.

Normally a period of about four weeks is required to review a suggestion and obtain a satisfactory answer which will then be posted on the Cafeteria bulletin board in the Central Laboratory. When several similar suggestions are submitted, answers will be made which are representative of the general trend.

Present plans are to acknowledge receipt of signed suggestions and distribute answers to individuals once they have been approved.

* * * * *

FAMILY SKATING PARTY - SUNDAY, JANUARY 23rd - NOON TO 4 p.m. - East pond in front of Central Laboratory. No charge. Light refreshments.

* * * * *

International Film Society for January

La Strada

Friday, January 14, 8 p.m.
Fermilab Auditorium
Adults \$1.50 - Children 75¢

La Strada, an Academy Award-winning Italian film, directed by Fellini, stars Anthony Quinn as Zampano and Giulietta Masina as Gelsomina. The Fellini-made English version of the film will be shown.

Zampano runs a traveling side show with Gelsomina as one of the players. She grows to love him, but the insensitive Zampano rebuffs her. Only after he abandons her and she dies, does he realize how much he loves her.

"My husband treats me like a Gelsomina. We went together to see La Strada and he cried and asked my forgiveness..."...from a letter to Fellini.

"Fellini's study of his principals is honest and unadorned, strikingly realistic and yet genuinely tender and compassionate...It speaks forcefully, poetically and often movingly in a universal language." N.Y.Times review.

PROTONS OUT-DUEL HUSTLERS

In a hard-fought battle to the finish, in which the lead changed hands very frequently, the Protons outlasted the Hustlers on the basketball court, 67-61, to notch their fifth consecutive victory of the season.

With a slim 2-point lead at less than two minutes before the end of the game, the Protons went into a ball control offense that stymied the Hustlers.

Other scores: The Visitors defeated K & K Plumbing, 49-36.

* * * * *

COLD WEATHER STARTS are available at Fermilab on inclement work days. Call Ext. 3307. After 6 p.m., call Ext. 3414.

* * * * *

ABOUT USING ELECTRIC SPACE HEATERS IN THE CENTRAL LABORATORY

The use of an electric space heater in the Central Laboratory is limited by the Energy Conservation Committee to a situation where the building space heating system cannot maintain the 68°F. limit of the Energy Conservation Program.

Where such electrical heaters are used they should have a grounded 3-prong plug, not be connected to an extension cord, and have a built-in tip-over switch as part of the unit.

Please cooperate to operate heaters safely! If you have any doubts, call Gene Plant, Ext. 3824, in the Central Laboratory, or George Doyle, Ext. 3421 in the Village.

* * * * *

CLASSIFIED ADS

FOR SALE - Puppies - Siberian Husky/Laborador Retriever, 8 wks. old, good with children. Make good outdoor pet. \$25.00. Call 3242.

* * * * *