

The Village Courier



fermi national accelerator laboratory

Operated by Universities Research Association Inc.
Under Contract with the Energy Research & Development Administration

Vol. 9, No. 15

April 14, 1977

FINDING FERMLAB'S ROOTS



...R. Carrigan, W. Brobeck, D. Jovanovic,
talk accelerators...



...Bob Long tapes history project...

"The older you get, the more interested you are in history." Appropriately, the speaker was William Brobeck, a history-maker in accelerator engineering. He shared 40 years of experience here recently in a quarterly engineering lecture series.

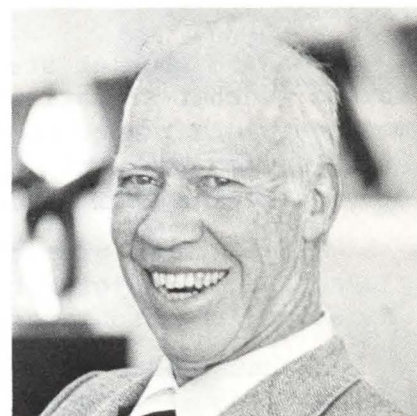
Tapes were made of Brobeck's remarks, for another project, by a new Fermilab History Committee. Finding Fermilab's roots--and particle accelerator origins--is the committee's mission as the laboratory approaches its 10th birthday.

An offshoot of a library committee, the unit was born at a luncheon meeting held in January. Members are: Dr. Robert R. Wilson, laboratory director, chairman; Dr. Drasco Jovanovic, deputy department head-research; Dr. Francis Cole, accelerator division (advanced projects); Dr. Richard Carrigan, assistant department head-research; Dr. Lee Teng, associate department head for advanced projects-accelerator division; and Roger Thompson, head of technical information-administrative division.

Collection materials are expected to include experimenters' papers, cassette/video tape interviews, books, photographs and equipment from Fermilab experiments.

A room in the library is being prepared to house the collection. History committee efforts will be coordinated with the American Institute of Physics' History of Physics Center, New York City, to avoid duplication. Stephen Weart and Joan Warnow, director and assistant director of the center, met here recently with history committee members to discuss the project.

During Brobeck's visit, he gave several lectures and a luncheon interview. These were taped and will launch lab collection materials. The speaker, president of Brobeck and Associates, a Berkeley Calif., consulting firm, served as assistant director and chief engineer at the University of California-Berkeley Radiation Laboratory from 1937 to 1957.



...William Brobeck...

FINDING FERMILAB'S ROOTS (Continued)

Recorded interviews and/or transcripts will be added as they become available.

Brobeck recalled that public interest in physics and science was sparked by the atom bomb. Radar and microwave technology also came out of World War II, Brobeck said, offering new vistas that engineers realized they didn't know about.

Many engineering jobs were created and physicists became engineers as big science projects were undertaken in the post-war 40's.

Motivation and functions provide the basic differences between scientists and engineers, Brobeck said. Scientists are inspired by curiosity and the search for timeless truths; engineers want to build something that accomplishes a task, makes something happen, the speaker said.

While scientists seek to acquire and organize knowledge, the engineer-researcher seeks knowledge that gets a job done, Brobeck said.

Information is the scientist's end-product, while processes and structures are what the engineers produce.

* * * * *

ANTICIPATING TORNADOES

Tornado season is here. A year ago last March \$500,000 damage was caused by a twister that swept through nearby Naperville. Once again, U.S. Weather Service bulletins are announcing funnel cloud sightings across the state.

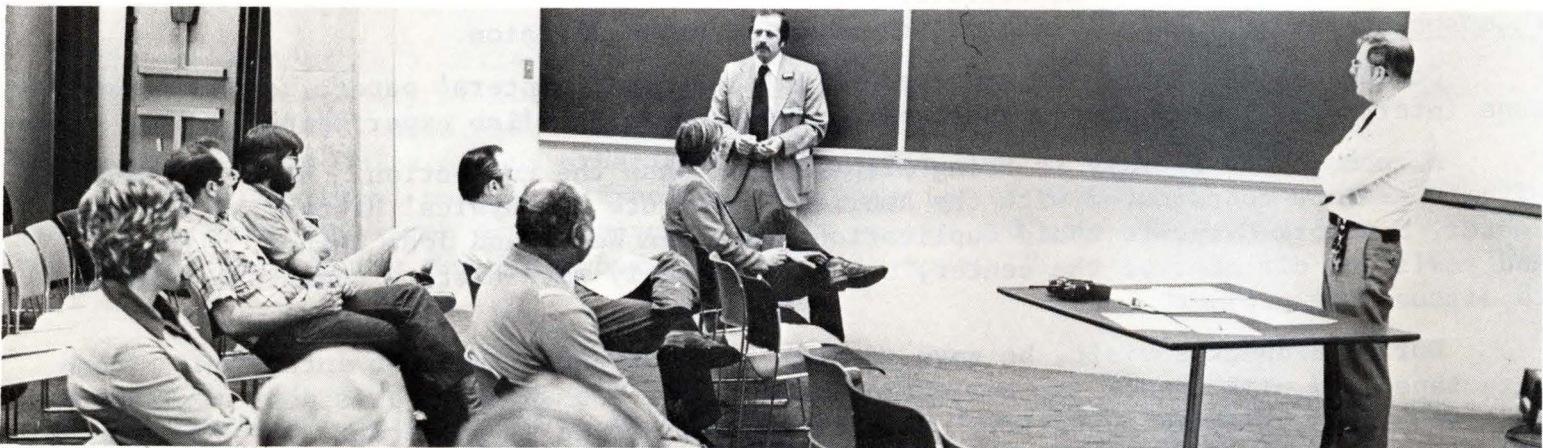
To inform employees, Fermilab has issued a "Tornado Preparedness Plan" booklet. The publication, based on the laboratory's master emergency plan, was distributed with last week's Village Crier. Extra copies are available from the Public Information Office, C1-1W.

As the booklet states, Fermilab has a preplanned response procedure for tornado and severe weather situations. Specially trained Emergency Services personnel constantly monitor weather conditions. Also, Fermilab utilizes services of Civil Defense, local and state law enforcement agencies, the National Weather Service and Murray and Trettle, private meteorological consultants in Northbrook.

The tornado preparedness booklet is designed to be a quick reference guide for employees in all major work areas. Listed by area is: source and type of alarm; shelter areas; and the area emergency supervisor(s) or safety officer.

Because immediate action may mean life or death when a tornado approaches, the booklet also lists survival tips for persons caught in urban areas, schools and in open country. Other tips tell how to recognize a tornado, describe tornado conditions and causes of destruction. In March, Capt. John Lill, Fermilab Fire Protection, and Rudy Dorner, Site Operations, led floor warden training sessions on tornado safety procedures.

* * * * *

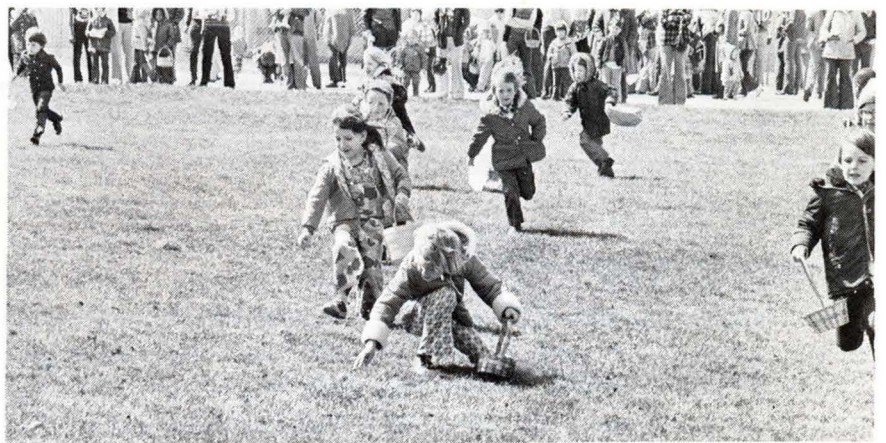


...Fermilab floor wardens were briefed on tornado response procedures by R. Dorner (L), Site Operations, and Lt. John Lill, Fire Protection...



EGG HUNTERS IN ACTION

Fermilab's annual Easter egg hunt was held near the Village Barn on Saturday. The event for children up to age 8 featured a running start, a personal appearance by E. Bunny, and lots of fun for all attending.



EASTER EGGS - UKRANIAN STYLE

A 2,000-year-old art was revived at Fermilab Friday. Mrs. Bonnie Aman demonstrated Easter egg decorating in the Ukranian fashion. The Naperville resident taught herself the art after viewing a film on the craft in a fall film festival sponsored by the Fermilab Inter/National Film Society.



DINNER AND DANCE

Persons holding tickets for the "Choreographer's Showcase" dance program (now sold out) next Sunday are invited to a dinner before the performance. Tickets are \$6 each. Rib eye roast will be featured; the complete menu appears in the April 8 Cultural Calendar. Reservations for dinner may be made with the guest office, Ext. 3440.

Over 800 tickets for a lecture by anthropologist Jane Goodall, April 29, were distributed a few hours after being made available. Separate waiting lists are being compiled of Fermilab employees and others desiring tickets. Dr. Goodall will speak at 8:30 p.m. in the Central Laboratory auditorium on "In the Shadow of Man." Her address will conclude a seven-speaker Bicentennial Lecture Series. Arranged by the Auditorium Committee, the series was made possible by a grant from the Illinois Humanities Council and the National Endowment for the Arts.

* * * * *

NEW ART EXHIBIT

Works by Dali, Roualt, Miro and other abstract and post-impressionist artists are among 63 prints now on display in Central Laboratory's second floor lounge. The display is on loan from the collection of Joseph Randall Shapiro, a founder of the Museum of Contemporary Art, Chicago, and its first president.

* * * * *

WATCH THE BIRDIE

Fermilab employees are invited to join a bird census in the main ring Sunday, April 17. The walk, conducted by the Chicago Ornithological Society, will organize at 9 a.m. in the parking lot. Other COS "bird walks" visit such sites as Chicago's lake-front and the Indiana Dunes National Park.

* * * * *

CREDIT UNION NOTE

The Argonne Credit Union has updated members' home addresses and also proper Lab locations. When your quarterly account statements are delivered to you in April, make a special note to check both your Lab and home address on the statement. If either are incorrect, notify the Credit Union. Your cooperation will keep your file updated. Contact Beverly or June at Ext. 3293.

* * * * *

END-OF-RUN REPORT

Experiment #226 recently completed its running time on the M-4 line of the Fermilab Meson Area. In the tradition of the high energy experimenters, the scientists hosted an "End-of-Run" party, honoring all those who had been involved with the experiment. But anyone who wished to join the victory celebration was invited to share the relief and victory of the occasion.

The experiment is a collaboration of scientists from the University of California-San Diego, the University of Chicago, SLAC, Swiss Federal Institute of Technology, and the University of Wisconsin. Bruce Winstein, spokesman for the group, says of the experiment: "The results of our experiment lend strong support to the idea that elementary particles travel much more freely in the interior of the nuclei than previously expected...future experiments will require higher energy and more intense K_L beams - this can be found in the M-3 line where we intend to move..."

* * * * *

...Registrations are being taken by Helen Ecker, CL-1W, Ext. 3126, for the NALREC Arts and Crafts Show, to be held in the Central Laboratory Atrium May 9-May 13. Call Helen for further information...

* * * * *