

The Village Courier



fermi national accelerator laboratory

Operated by Universities Research Association Inc.
Under Contract with the Energy Research & Development Administration

Vol. 9, No. 33

August 25, 1977

ACCELERATOR DOWN, CONSTRUCTION UP

"Facility M & D." That lone notation is chalked on the daily schedule blackboard in Fermilab's operations center. The message went up at 7 a.m. Aug. 15--when a major facility maintenance and development shutdown began.

Rest for the accelerator means feverish activity for Accelerator and Architectural Services personnel. Two construction projects were planned to take advantage of suspended operations. Working against the Monday, Sept. 12 startup date are subcontractors extending the transfer hall and also completing phase two of a reserve injection to the Main Ring.

Bruce Chrisman, executive assistant in Accelerator, provided details on the transfer hall extension. He said the project is underway directly east of the Central Laboratory, with some parking spaces sacrificed temporarily for construction operations and material storage. A 120-foot concrete tunnel is being constructed from its present terminus to enclosure B in the switchyard. The tunnel will replace the present beam pipe buried 25 feet underground. Benefits of the project will include upgraded electromagnet capacity and increased protection for switchyard personnel against low-level radiation contamination.

Work began a week before the shutdown, Chrisman said. The dirt berm over the beam pipe was stripped down to a safe height above the beam pipe elevation. The remaining earth shield was removed when the accelerator was turned off. Earth closest to the beam pipe will be stored--under cover--and go back into the hole first at the project's completion.

A sand footing and underdrain will precede pouring of a concrete slab footing for the tunnel sections. The slab, 14 inches thick by eight feet eight inches wide, will support 11 precast tunnel forms. In an inverted U-shape, each form weighs 33,000 pounds and measures 10 feet long by six feet wide and seven feet high.

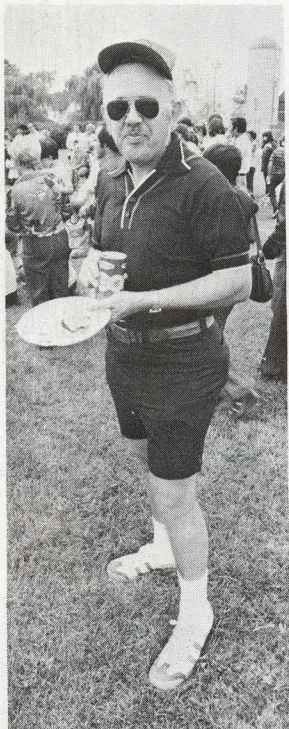
The sections will be connected with welded plates. Also, they will be waterproofed between sections. The berm will be reconstructed, as will the parking lot, to complete the project Chrisman said. Other supervisors on the project are Howard Casebolt of Accel. Safety and Marv Warner, Architectural Services. In addition Peter Gollon (Radiation Physics) has supplied manpower and advice throughout the project. The subcontractors doing the work are being coordinated by Don Smith and Bob Maletto of Fermilab T&M Services.



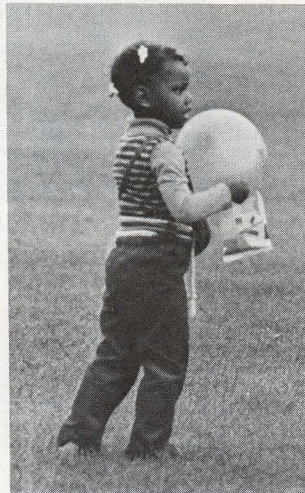
...Central Laboratory (east) overlooks transfer hall work...

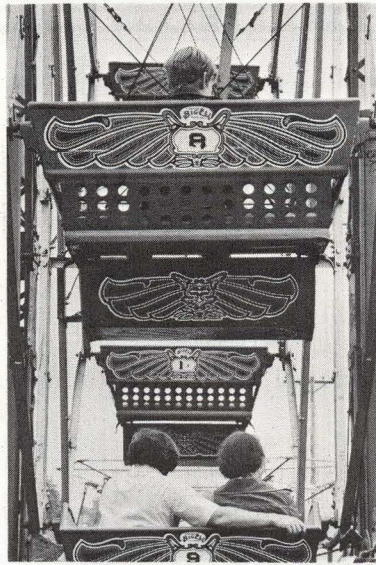


...Power shovel strips berm from beam pipe...



'77 ALL-LAB PICNIC
Rain threatened the annual picnic for the community came off with a bang Sunday. Co-chairmen Marlon Palmer and Marlon Palmer were among the persons attended. Volunteers helped with the event and prizes. (Village News by Rick Fenner/Fenner)





PIX
but NALREC's
he Fermilab com-
hout a hitch
n Chuck Grozis
stimated 1,500
About 70 vol-
games, food
ge Crier photos
ilab Photo Dept.)



THE INTER/NATIONAL FILM SOCIETY

presents

F O R B I D D E N P L A N E T

F. M. Wilcox, Director

The best of the sci-fi. interstellar productions of the fifties.

Auditorium

8:00 p.m.

Friday, August 26, 1977

Admission: 75¢ children, \$1.50 adults

PRIME TIME FOR FERMILAB

A two-hour TV documentary featuring Fermilab, "The Key to the Universe," will be broadcast at 8 p.m. Thursday, Sept. 1 and 3 p.m., Sunday, Sept. 4 on Channel 11-WTTW, Chicago. The science special premiered on Channel 11 in May. Fermilab scenes include aerial views, Central Laboratory and the 15' bubble chamber, and at several experiments.

COLLEGE SCHOLARSHIPS AVAILABLE

Universities Research Association, operator of Fermilab for ERDA, announces its annual scholarship program for employees' children. Employee children -- who will begin a four-year college program in the fall of 1978 -- are eligible to apply for a URA scholarship of up to \$1,200 per year for four years. Students will be selected on the basis of American College Testing Assessment (ACT) scores. (Note: This is a change from previous years when S.A.T. scores were used.) Although applications are not due until March, 1978, students should make arrangements to take the A.C.T. tests this fall. High school counselors have the necessary information regarding testing dates and application procedures. Since the tests are given only on specific dates, arrangements should be made as soon as possible. Information regarding the URA application procedure will be announced at a later date.

ARTISTS VISIT

Nancy Hart and Anthony Tyznik, botanical artists at Morton Arboretum, Lisle, were guests at a luncheon held here last week. The Laboratory exhibit committee hosted the event and a visit to a second floor crossover display of work by the artists. Twenty-four pen and ink drawings of trees, leaves and seeds will be on exhibit through August. The drawings were originally prepared as cover art and illustrations for the Morton Arboretum Quarterly magazine. Tyznik is arboretum superintendent; Mrs. Hart, a Batavia resident, is staff artist and curator of the arboretum's historical collection of botanical prints and drawings.

