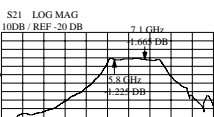
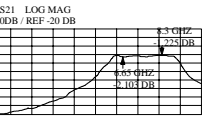
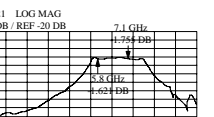
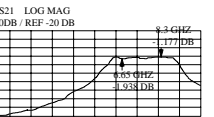
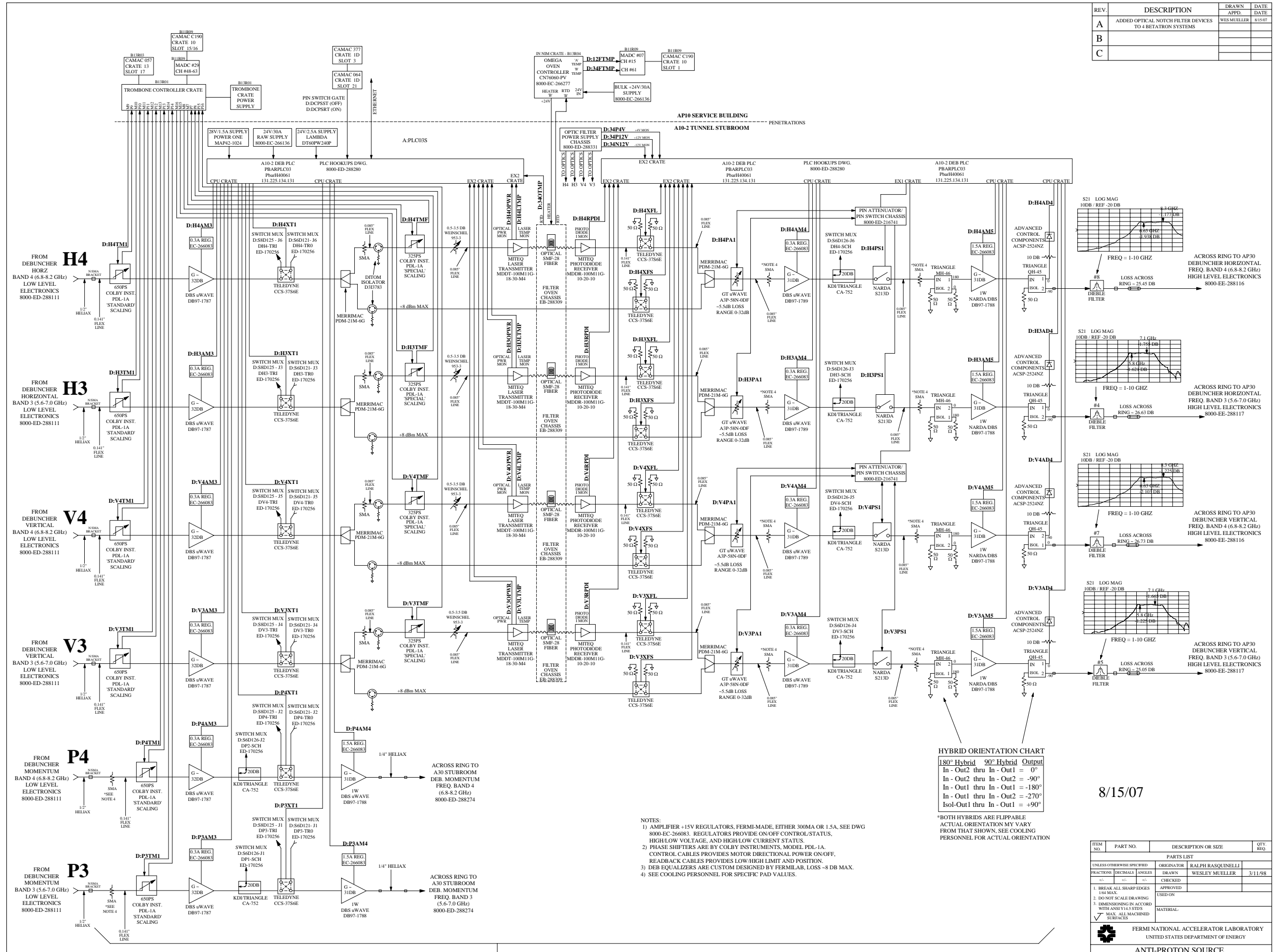


REV.	DESCRIPTION	DRAWN	DATE
A	ADDED OPTICAL NOTCH FILTER DEVICES TO 4 BETATRON SYSTEMS	WES MUELLER	8/15/07
B			
C			



HYBRID ORIENTATION CHART

180° Hybrid	90° Hybrid	Output
In - Out2 thru In - Out1		= 0°
In - Out2 thru In - Out1		= -90°
In - Out1 thru In - Out2		= -180°
In - Out1 thru In - Out2		= -270°
Isol-Out1 thru In - Out1		= +90°

- NOTES:
- AMPLIFIER +15V REGULATORS, FERMI-MADE, EITHER 300MA OR 1.5A, SEE DWG 8000-EC-266083. REGULATORS PROVIDE ON/OFF CONTROL STATUS, HIGH/LOW VOLTAGE, AND HIGH/LOW CURRENT STATUS.
 - PHASE SHIFTERS ARE BY COLBY INSTRUMENTS, MODEL PDL-1A. CONTROL CABLES PROVIDES MOTOR DIRECTIONAL POWER ON/OFF. REARBACK CABLES PROVIDES LOW/HIGH LIMIT AND POSITION.
 - DEB EQUALIZERS ARE CUSTOM DESIGNED BY FERMI LAB, LOSS -8 DB MAX.
 - SEE COOLING PERSONNEL FOR SPECIFIC PAD VALUES.

*ALL COMPONENTS MOUNTED ON ALUMINUM PLATE VERTICALLY WITH UNISTRUT IN A10-2 STUBROOM THE LONG LEG SIDE OF ALL FILTERS IS ON BACKSIDE OF PLATE AND ALL BAY DELAY DEVICES ARE ON AN ALUMINUM PLATE IN A TEMPERATURE CONTROLLED NSI CHASSIS

8/15/07

ITEM NO.	PART NO.	DESCRIPTION OR SIZE	QTY	REQ.
PARTS LIST				
UNLESS OTHERWISE SPECIFIED		ORIGINATOR	RALPH RASQUINELLI	
FRACCTIONS	DECIMALS	ANGLES	DRAWN	WESLEY MUELLER
1. BREAK ALL SHARP EDGES 1/64 MAX.		CHECKED	APPROVED	
2. DO NOT SCALE DRAWING.		USED ON		
3. DIMENSIONS IN ACCORD WITH ANSI Y14.5 STD'S		MATERIAL:		
4. MAX. ALL MACHINED SURFACES				
FERMI NATIONAL ACCELERATOR LABORATORY UNITED STATES DEPARTMENT OF ENERGY				
ANTI-PROTON SOURCE DEBUNCHER MEDIUM LEVEL DOWNSTREAM ELECTRONICS				
SCALE	FILMED	DRAWING NUMBER	8000 - EE - 288113	REV. A