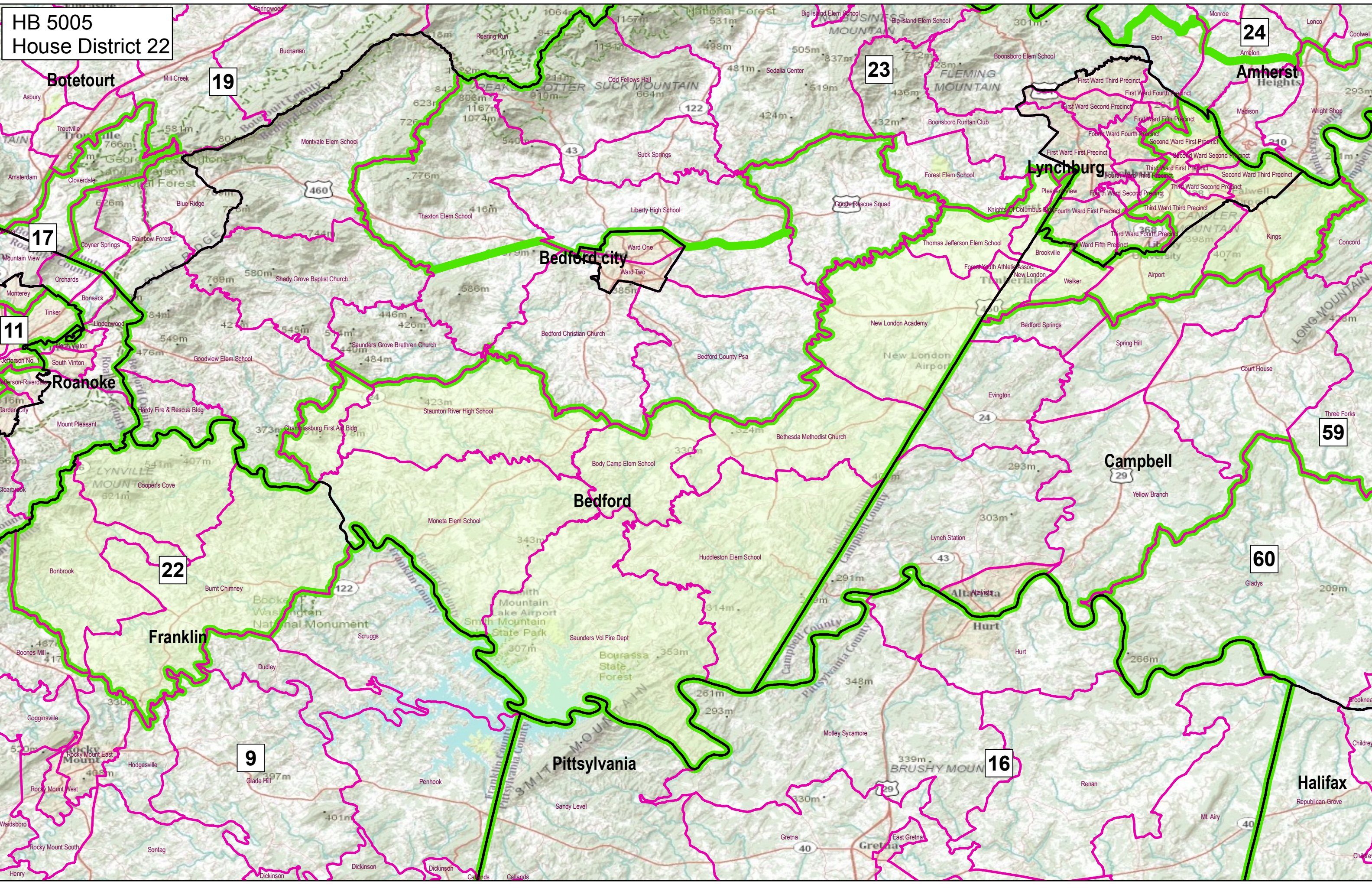


**HB 5005**  
**House District 22**



**Botetourt**

**19**

**23**

**24**

**Amherst**

**Lynchburg**

**Bedford city**

Ward One  
Ward Two

**17**

**11**

**Roanoke**

**59**

**Campbell**

**Bedford**

**22**

**Franklin**

**60**

**9**

**Pittsylvania**

**16**

**Halifax**