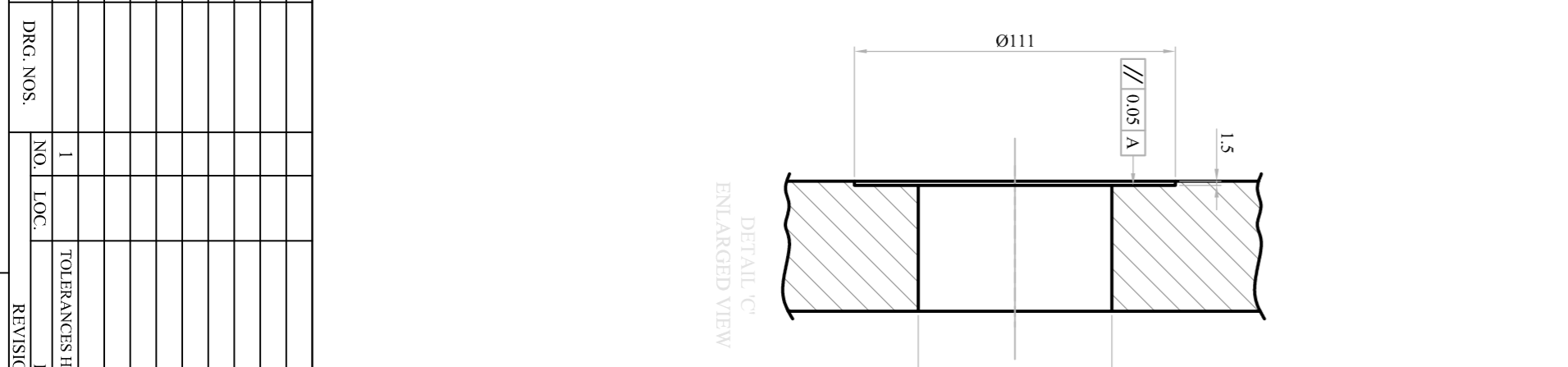
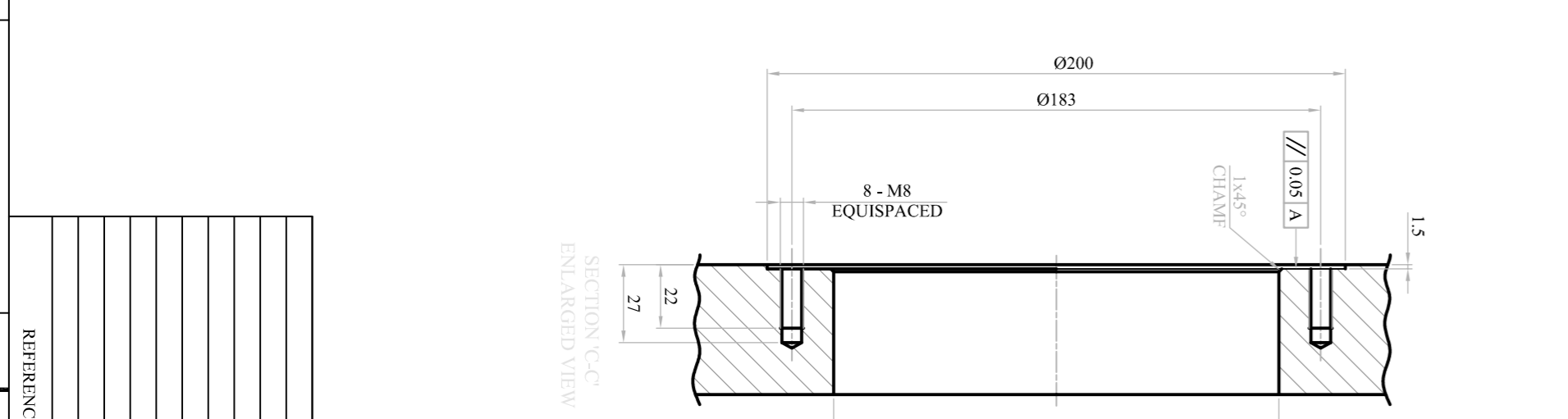
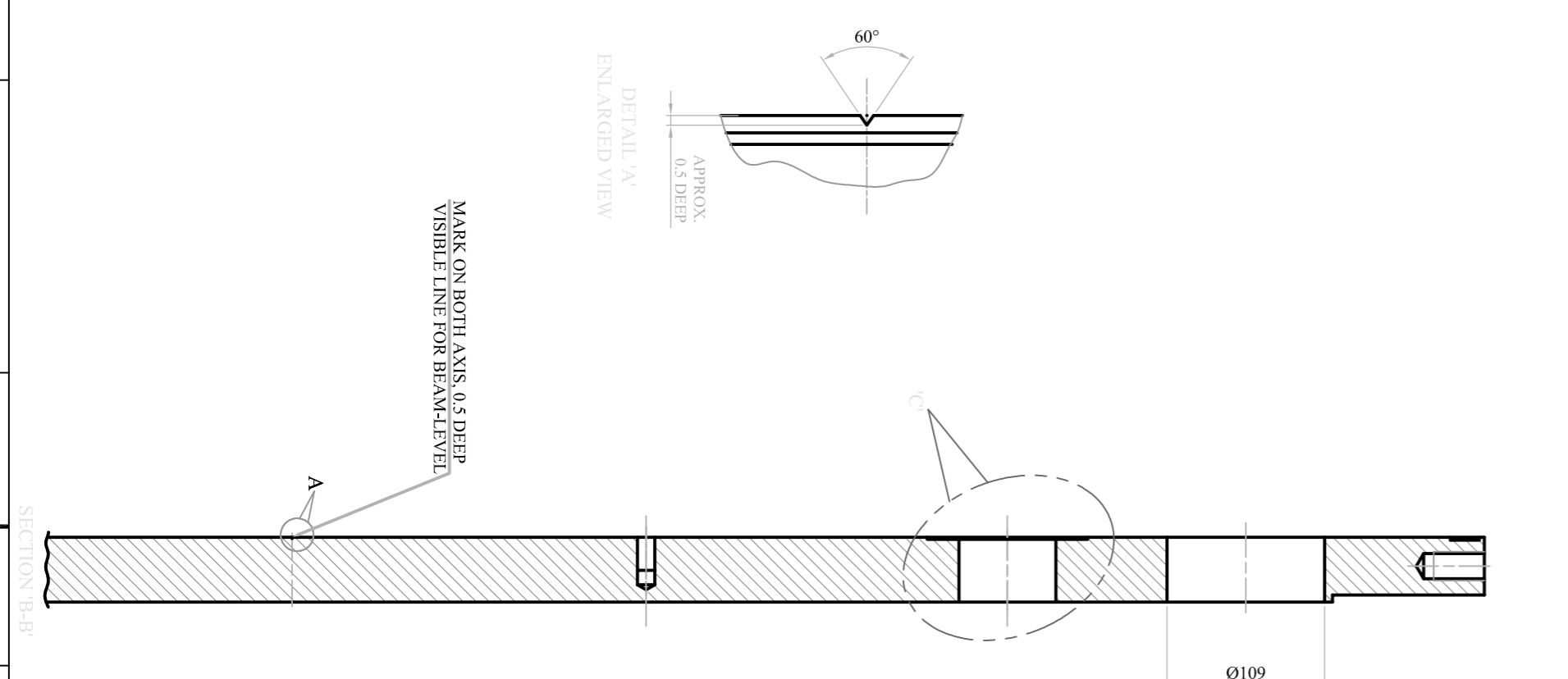
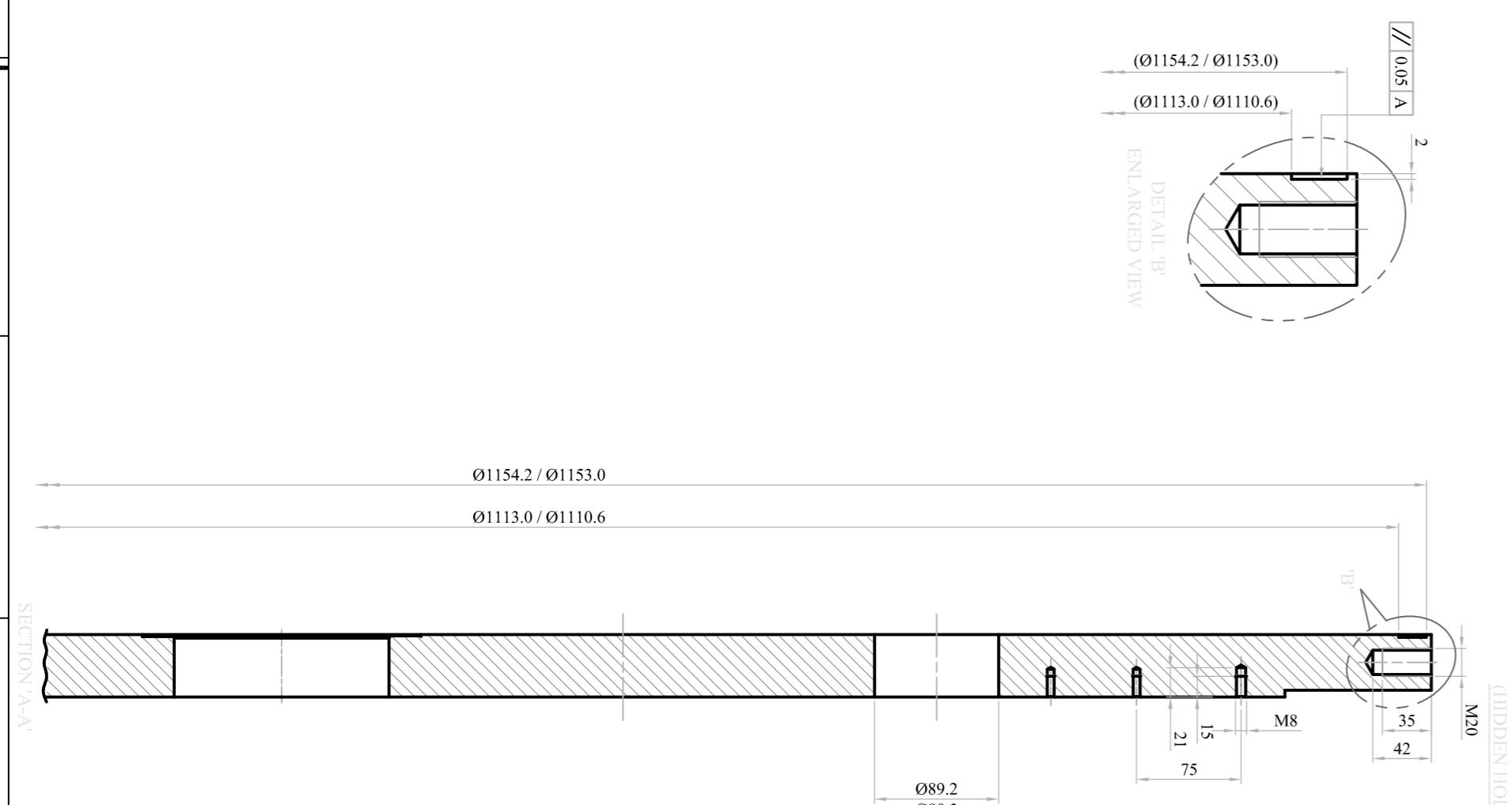
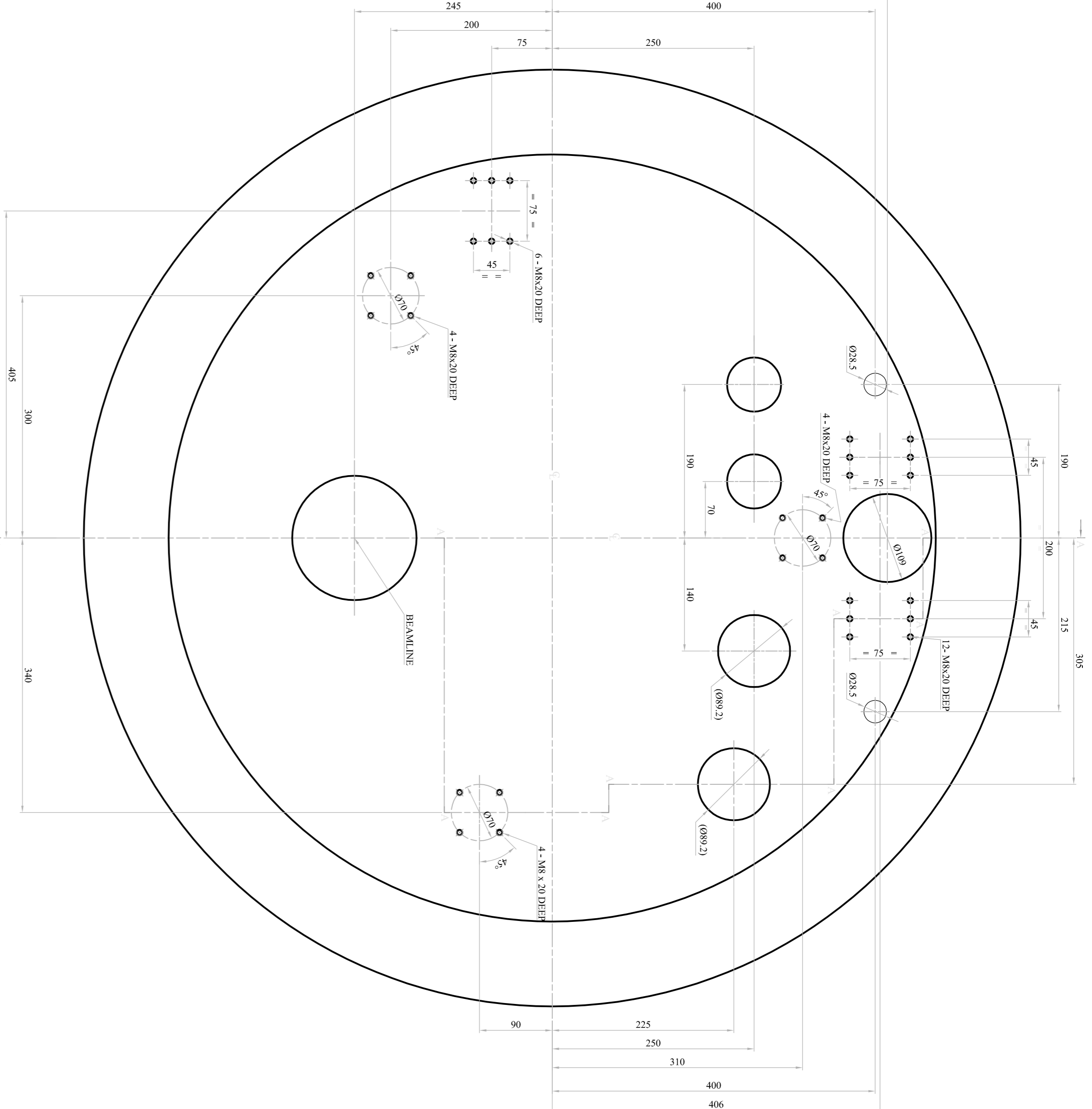
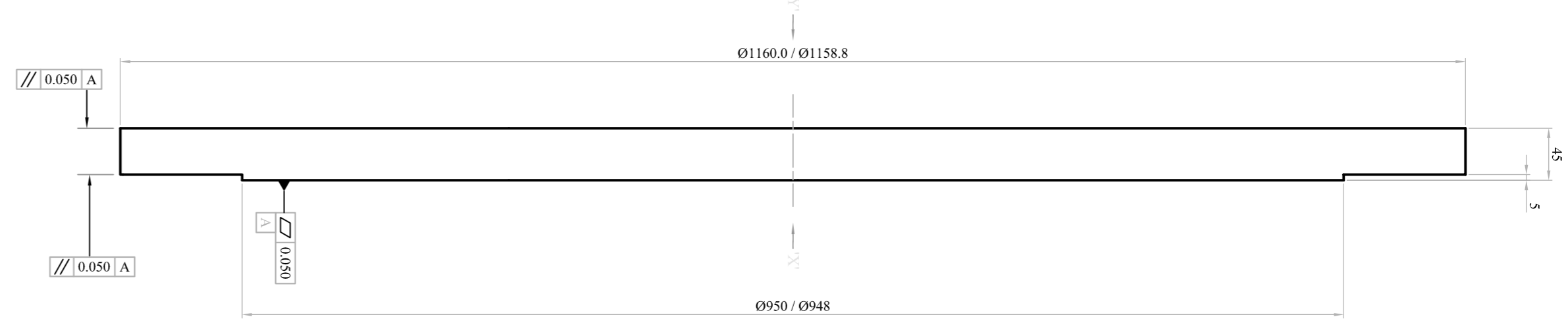
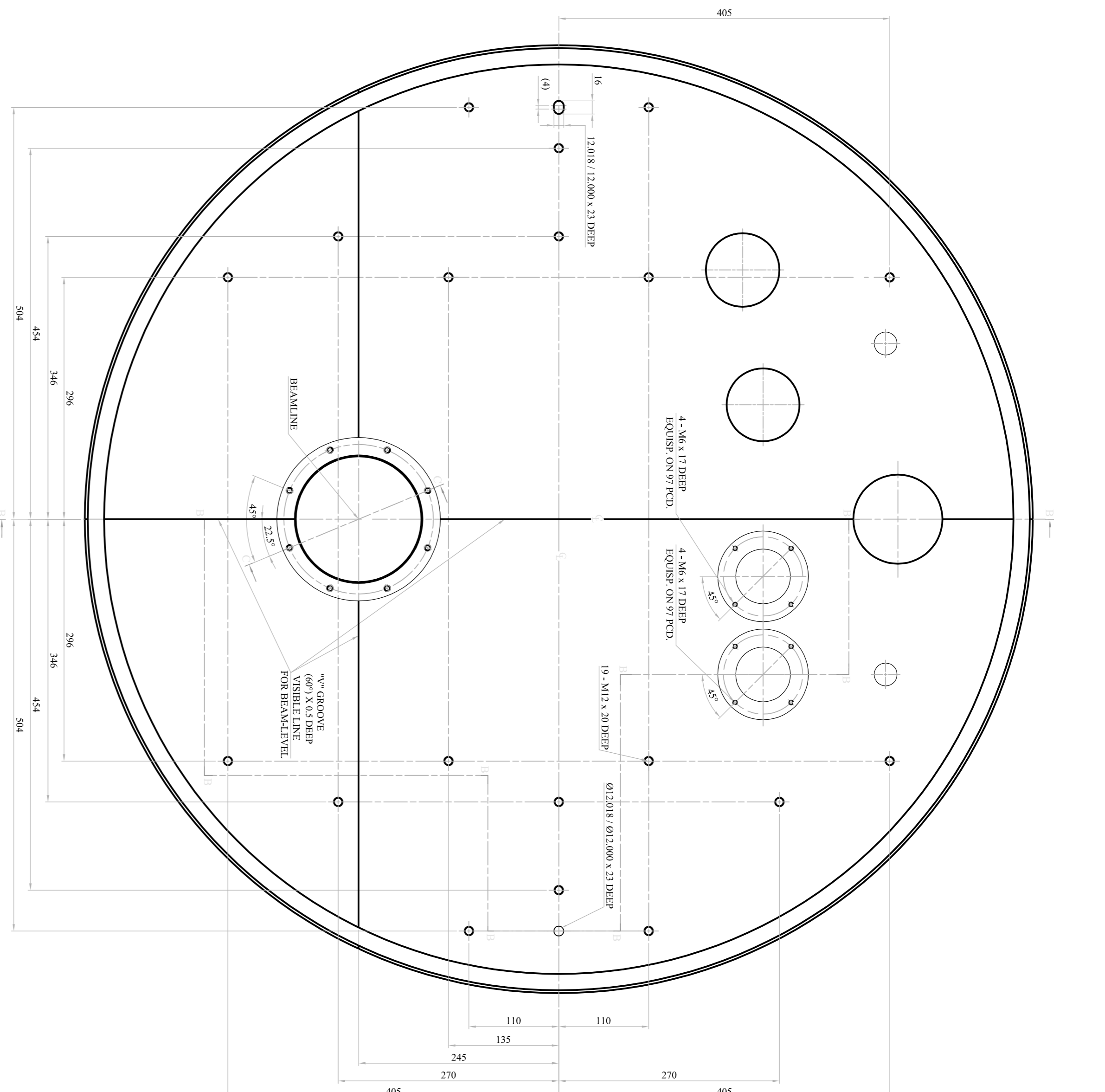


DRG. NO. **A-058-30-3261** REV. **1**



NO.	LOC.	REV.	DESCRIPTION	DATE	BY	CHKD.	APP'D.
1			TOLERANCES HAS BEEN REMOVED				

GENERAL DIMENSIONS	TOLERANCES	LENGTH OF SHORTE	SURFACE FINISH
Ø170 - 6	± 0.1	1 - 6	IN MILLIMETERS 3.15-√RA
30 - 120	± 0.3	6 - 30	CHAMFER 1x45°
150 - 315	± 0.5	30 - 120	
315 - 1000	± 0.8	120 - 400	
1000 - 2000	± 1.2		
2000 - 4000	± 2.0		
4000 & ABOVE	± 3.0		

ITEM NO.	DESCRIPTION	QTY.
1	BASE PLATE	1
2	SS304	1
3	1.80	1

ITEM NO. **1**
 TITLE **BASE PLATE**
 MATERIAL **SS304**
 QTY. **1**

AutoCAD FILE NO.: **058-30-3260** WORK ORDER NO.: **A-058-30-3261** CODE NO.:
 PROJECT OR SECTION: **DETAIL OF BASE PLATE**
 CMTS: **(1) (3 GHz)**
 FINAL
 VACUUM VESSEL END CAP
 (ENDCAP SUBASSY)
 DRN.: **LANKAN** DATE: **28/04/14** APPD.:
 DRG. CHGD.: DATE: SHEET NO.: **1** OF **1** SHEETS
 DESD.: DIS. CHGD.: SCALE: **1:3**
 GOVERNMENT OF INDIA
BHABHA ATOMIC RESEARCH CENTRE
 CENTRE FOR DESIGN & MANUFACTURE
 DRG. NO. **A-058-30-3261** PROJECTION:
 REV. **1**