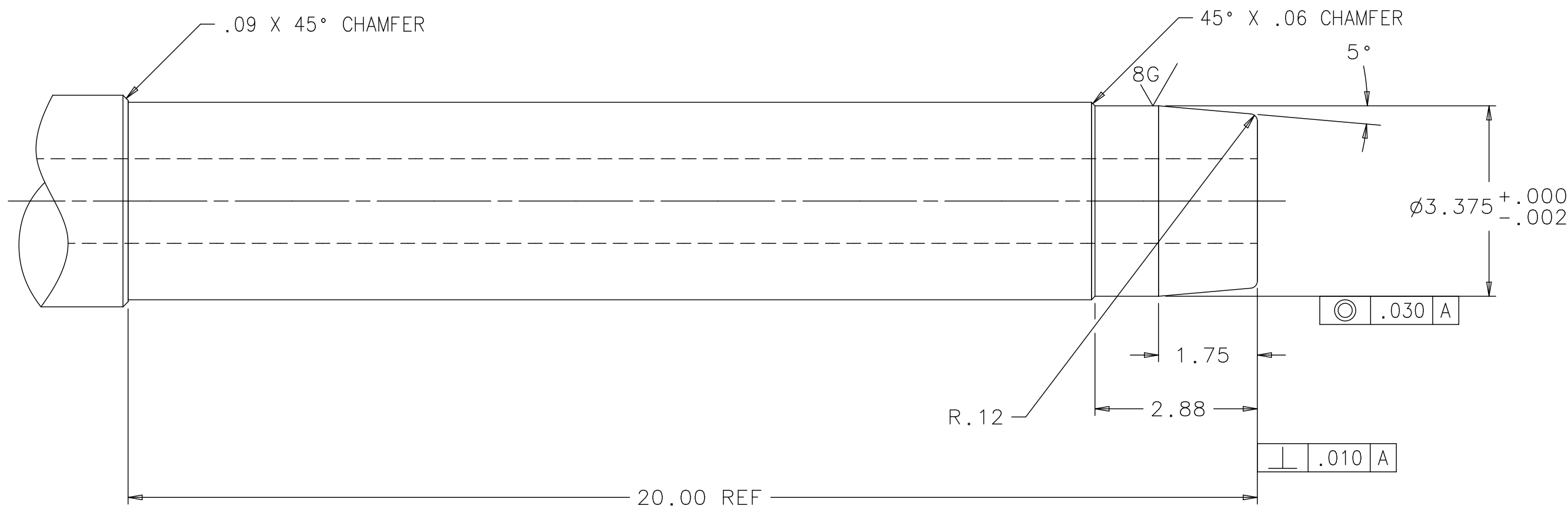
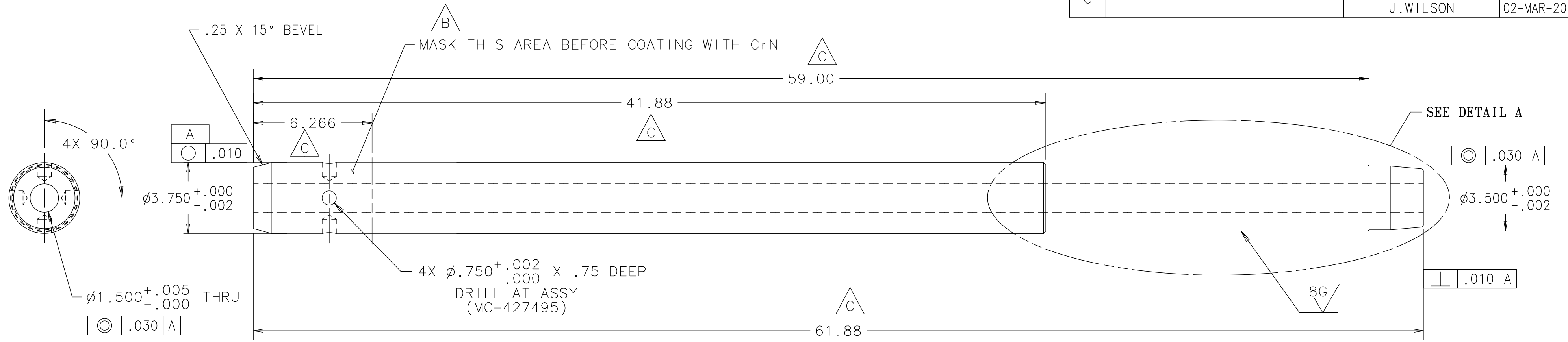


REV	DESCRIPTION	DRAWN	DATE
		APPROVED	DATE
A	39.88 WAS 31.38; 59.88 WAS 51.38 φ3.375 WAS φ3.368	G SMITH	30-SEP-2004
		E VILLEGAS	30-SEP-2004
B	CrN COATING NOTE AND MASKING NOTE ADDED	R. STEWART	03-DEC-2010
		M. MCGEE	03-DEC-2010
C	SHAFT IS 2.00" LONGER	R. STEWART	02-MAR-2010
		J. WILSON	02-MAR-2010



DETAIL A
SCALE 1:2

NOTES: 1. FINISH PART WITH CrN COATING .0001" TO .0002" THICKNESS
2. APPROXIMATE PART WEIGHT = 129 LBS.

UNLESS OTHERWISE SPECIFIED			ORIGINATOR	E. VILLEGAS	01-DEC-2002
.XX	.XXX	ANGLES	DRAWN	N. GRINNELL	15-JAN-2003
± .03	± .005	± 1°	CHECKED	W. CYKO	29-MAY-2003
1. BREAK ALL SHARP EDGES .015 MAX. 2. DO NOT SCALE DRAWING. 3. DIMENSIONS BASED UPON ASME Y14.5M-1994 4. MAX. ALL MACH. SURFACES 125 5. DRAWING UNITS: U.S. INCH			APPROVED	E. VILLEGAS	29-MAY-2003
			USED ON		
			MATERIAL	φ3 3/4 INVAR 36 STEEL	



FERMI NATIONAL ACCELERATOR LABORATORY
UNITED STATES DEPARTMENT OF ENERGY

PPD/MECHANICAL DEPARTMENT
NUMI TARGET HALL TARGET BAFFLE
LOWER MAIN SHAFT

SCALE	DRAWING NUMBER	SHEET	REV
1:4	8875.112-MC-427496	1 OF 1	C
CREATED WITH : Ideas12NXSeries		GROUP: ACCELERATOR MECH. SUPPT.	