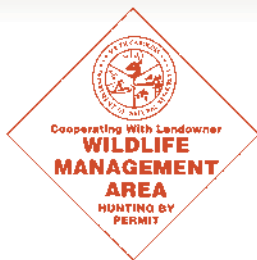


WMA REGULATIONS



WMA Abuse

Any person who damages, destroys or misuses WMA lands or improvements on them including, but not limited to, roads, vegetation, buildings, structures or fences, leaves refuse, trash or other debris on the property, or sets, makes or builds a fire (except in an area specially designated as a campfire area), operates a motor conveyance on areas or roads closed to operation, target practices, camps in areas except for designated campsites, disregards safety or restrictive postings as designated by the landowner or who otherwise abuses, damages, destroys or misuses wildlife management areas is guilty of a misdemeanor and, upon conviction, must be fined \$200 and be required to make restitution to the landowner in an amount determined by the court to be necessary to repair, rebuild, restore or clean up the property to its condition before the abuse occurred. A person who is convicted of damaging, destroying, abusing or misusing Wildlife Management Area land shall lose the privilege of entering WMA land for one year (50-11-2210).

WMA Public Drawing Hunts

The SCDNR offers a variety of WMA hunts through computerized drawings. Hunt fees range from \$10 to \$800 per hunter and must be submitted at the time of application. Applications for deer hunts are available in July, waterfowl and quail hunts in Sept. and youth/adult only turkey hunts in Feb. Deadlines to apply for draw hunts are generally mid-Aug. (deer), mid-Oct. for quail and waterfowl and early Mar. for youth turkey hunts. Applications are available at SCDNR offices statewide (refer to directory on page 6 or write SCDNR Public Drawing Hunts, PO Box 167, Columbia, SC 29202 or visit our website at www.dnr.sc.gov/hunting/drawhunts). A hunter's privilege to participate in a Wildlife Management Area lottery hunt may be revoked for the remainder of the hunt for any violation of law or WMA regulations (SC 50-11-2240).

General Regulations

- On all SCDNR-owned WMA lands the removal of artifacts or ecofacts (including arrowheads) from the surface or subsurface is prohibited except when approved by the State Historic Preservation Office and carried out in accordance with their guidelines.

- Statutes 50-11-2200 and 50-11-2210 authorize the promulgation of WMA regulations R123-40. See specific game zones for seasons.

2.1 – Except as provided in these regulations, no person may hunt or take wildlife on areas designated by the South Carolina Department of Natural Resources (SCDNR) as Wildlife Management Area (WMA) lands.

2.2 – Entry onto WMA land is done wholly and completely at the risk of the individual. Neither the landowners nor the State of South Carolina nor the South Carolina Department of Natural Resources accepts any responsibility for acts, omissions, activities or conditions on these lands which cause or may cause personal injury or property damage.

2.3 – Entry onto WMA land constitutes consent to an inspection and search of the person, game bag or creel.

2.4 – No person may hunt or take wildlife on WMA land unless an individual is in possession of a valid South Carolina license; a valid WMA permit; and other applicable federal or state permits, stamps, or licenses.

2.5 – No Sunday hunting is permitted on any WMA lands.

2.6 – On all WMA lands, baiting or hunting over a baited area is prohibited. As used in this section, "bait" or "baiting" means the placing, depositing, exposing, distributing, or scattering of shelled, shucked, or unshucked corn, wheat, or other grain or other food stuffs to constitute an attraction, lure, or enticement to, on, or over any area. "Baited area" means an area where bait is directly or indirectly placed, deposited, exposed, distributed, or scattered and the area remains a baited area for ten (10) days following the complete removal of all bait. Salt/minerals are not considered bait.

2.7 – On WMA lands construction or use of tree stands and temporary climbing devices is prohibited if the tree stand or temporary device is constructed by driving nails, screws or other devices into the tree; or the tree stand or temporary climbing device is constructed by wrapping wire around the tree. Other tree stands and temporary climbing devices are permitted provided they are not permanently affixed or embedded in the tree. All stands and temporary climbing devices must be removed by the end of deer hunting season.

2.8 – On WMA lands any hunter younger than sixteen (16) years of age must be accompanied by an adult (21 years or older). Sight and voice contact must be maintained.

2.9 – Notwithstanding any other provision of these regulations, the Department may permit special hunts on any day during the regular hunting season.

2.10 – No person may release or attempt to release any animal onto WMA lands without approval from the Department.

2.11 – While participating in a hunt on WMAs, no person may possess, consume or be under the influence of intoxicants, including beer, wine, liquor or drugs.

2.12 – On WMA lands, during the designated statewide youth deer hunt day, only still hunting is allowed. The limit is two deer total to include no more than one antlerless deer.

2.13 – Taking or destroying timber, other forest products or cutting firewood on WMA lands without written permission from the landowner or his agents is prohibited. Users of WMA lands are prohibited from planting, attempting to plant, burning or otherwise attempting to manipulate crops, natural vegetation or openings without written permission from the landowner or his agent.

2.14 – On WMA lands, hunting armadillos and coyotes at night is prohibited. Armadillos and coyotes may be hunted during any open season for game during daylight hours with no bag limit. Weapon(s) used to hunt armadillos and coyotes are limited to the weapon(s) that are allowed for the current open season on WMA.

2.15 – On WMA lands during special designated hunts, a WMA may be closed to other public access.

2.16 – Still hunting for hogs is permitted on WMAs during any open season for game during daylight hours with only the weapons allowed during the hunting season in progress unless otherwise prohibited. No hog may be transported alive from a WMA. Hogs may not be hunted at night. There is no bag limit on hogs. Hunters must wear a hat, coat, or vest of solid international orange while hog hunting. Buckshot is prohibited. During hog hunts with dogs, no still or stalk hunting is allowed and only handguns are permitted. No hog hunting with dogs is allowed except during special designated seasons.

2.17 – Unless otherwise specified, small game hunting seasons and bag limits are the same as Game Zone seasons and bag limits except no hunting before Sept. 1 or after Mar. 1.

Weapons

3.1 – On WMA lands hunters may use any shotgun, rifle, bow and arrow, crossbow or hand gun except specific weapons may be prohibited on certain hunts. Small game hunters may possess or use shotguns with shot no larger than No. 2 or .22 or smaller rimfire rifles/handguns or primitive muzzle-loading rifles of .40 caliber or smaller. Small game hunters may not possess or use buckshot, slugs or shot larger than No. 2. Blow guns, dart guns, drugged arrows or arrows with exploding tips are not permitted. Small game hunters using archery equipment must use small game tips on the arrows (judo points, bludgeon points, etc.).

3.2 – For Special Primitive Weapons Seasons, primitive weapons include bow and arrow, crossbow and muzzle-loading shotguns

(20 gauge or larger) and rifles (.36 caliber or larger) with open or peep sights or scopes, which use black powder or a black powder substitute that does not contain nitro-cellulose or nitro-glycerin components as the propellant charge; there are no restrictions on ignition systems (e.g. Flintstone, percussion cap, shotgun primer, disk, electronic, etc.). During primitive weapons season, no revolving rifles are permitted. (Falconry Allowed).

3.3 – On WMA lands, big game hunters are not allowed to use armory-piercing, tracer, incendiary, or full metal bullets or .22 or smaller rimfire. Shotguns with only buckshot or slugs are allowed. Buckshot is prohibited during still gun hunts for deer on WMA lands in Game Zones 3-4.

3.4 – On WMAs all firearms transported in vehicles must be unloaded and secured in a weapons case, or in the trunk of a vehicle or in a locked toolbox. On the Francis Marion Hunt Unit during deer hunts with dogs, loaded shotguns may be transported in vehicles. Any shotgun, centerfire rifle, rimfire rifle or pistol with a shell in the chamber, magazine or muzzleloader with a cap on the nipple or flintlock with powder in the flash pan is considered loaded.

3.5 – No target practice is permitted on WMA lands except in specifically designated areas.

3.6 – On WMA lands during still gun hunts for deer or hogs there shall be no hunting or shooting from, on or across any road open to vehicle traffic. During any deer or hog hunt there shall be no open season for hunting on any designated recreational trail on U.S Forest Service or SC Public Service Authority property.

Deer

4.1 – On WMA lands with designated check stations, all deer bagged must be checked at a check station. Deer bagged too late for reporting one day must be reported the following day.

4.2 – Unless otherwise specified by the Department, only bucks (male deer) may be taken on all WMA lands. Antlered bucks must have antlers visible two (2) inches above the hairline to be legally bagged on “bucks only” hunts. Male deer with visible antlers of less than two (2) inches above the hairline must be taken only on either-sex days or pursuant to permits issued by the Department. A point is any projection at least one inch long and longer than wide at some location at least one inch from the tip of the projection.

4.3 – On WMA lands, man drives for deer are permitted between 10:00 a.m. and 2:00 p.m. only, except that no man drives may be conducted on days designated by the Department for taking deer of either sex except on WMA

lands in Game Zones 1 and 2, man drives will be permitted on the last two (2) scheduled either-sex days. A man drive is defined as an organized hunting technique involving two (2) or more individuals whereby an attempt is made to drive game animals from cover or habitat for the purpose of shooting, killing, or moving such animals toward other hunters. On WMA lands, drivers participating in man drives are prohibited from carrying or using weapons.

4.4 – Deer either-sex days for still gun hunts on WMAs are as follows:

- **Game Zone 1:** The last three Sat. in Nov.
- **Game Zones 2-4:** The first three Sat. in Oct., the last three Sat. in Nov., the Sat. after Christmas, and Jan. 1.
- **In all Game Zones,** hunters using archery equipment may take either-sex during all archery only and primitive weapon seasons for deer without being required to tag the animal. Game Zone WMA limits apply.
- **On special mobility impaired and youth deer hunts** sanctioned by the Department and during the statewide youth deer hunt day, participants may take two deer total, to include no more than one antlerless deer.

4.5 – For all WMAs combined statewide, the limit for all seasons and methods combined



Loaded with Protein!
Lasts for Years!

Renovation
white clover

The Super Stoloniferous Solution!

- Increases Pasture Productivity
- Attracts and Feeds Wildlife
- Reduces Fertilizer Costs
- Produces Nitrogen
- Controls Erosion

Developed by The University of Georgia and The Samuel Roberts Noble Foundation for maximum stolon density, longer life and greater gains. Ideal for all livestock and wildlife.

RenovationClover.com

WMA REGULATIONS

is two deer per day, 5 deer total, no more than two bucks, unless otherwise specified. Antlerless deer limit is one deer per day, unless otherwise specified. Buck only, except either-sex on Game Zone either-sex days.

4.6 – Individual Antlerless Deer Tags: Tags are valid in Game Zones 1 and 2 beginning Oct. 1 and in Game Zones 3-4 beginning Sept. 15. For all WMAs combined a maximum of two (2) individual antlerless deer tags may be used during primitive weapons or gun deer seasons in all Game Zones, except only one individual antlerless deer tag may be used in Game Zone 1.

4.7 – Except on either-sex days, antlerless deer must be tagged immediately after harvest and before being moved from the point of kill and the tag must be validated as prescribed by the SCDNR.

4.8 – For WMAs designated as Quality Deer Management Areas, all antlered bucks must have a minimum 4 points on one side or a minimum 12-inch antler spread except during designated special youth hunts. Antler spread is the greatest outside measurement (main beam or points) on a plane perpendicular to the skull.

4.9 – On WMA lands, deer, hogs, or bear may not be hunted with a firearm within 300 yards of a residence.

Dogs

5.1 – On all WMA lands, dogs may be used for small game hunting unless otherwise specified.

5.2 – Dogs may be trained for squirrel, quail and rabbit hunting from Sept. 1 through Sept. 14 (no guns).

5.3 – On WMA lands, dogs may be used for hunting foxes, raccoons, bobcats or opossums only between thirty (30) minutes after official sunset and thirty (30) minutes before official sunrise.

5.4 – Unless otherwise specified, deer hunting with dogs on WMA lands is prohibited. The Department may permit deer hunting with dogs on WMA lands not located in Game Zones 1 & 2. For the purposes of tracking a wounded deer, a hunter may use one dog which is kept on a leash.

5.5 – Dogs may be used to hunt bear on WMA lands in Game Zone 1 during the special party dog bear season.

5.6 – On WMA lands, dogs may be used to hunt hogs only during special designated hog hunts with dogs.

Vehicles

All terrain vehicles are not allowed on any Heritage Preserve Reg. 123-203 D.1.

6.1 – On all WMA lands, no hunter may shoot from a vehicle unless permitted by the department.

6.2 – On WMA lands, motor-driven land conveyances must be operated only on designated roads or trails. Unless otherwise specified, roads or trails which are closed by barricades and/or signs, either permanently or temporarily, are off limits to motor-driven land conveyances.

6.3 – A person may not obstruct, or cause to be obstructed travel routes on WMA lands.

Visible Color Clothing

7.1 – On WMA lands during any gun and muzzleloader hunting season for deer, bear and hogs, all hunters, including small game hunters, must wear either a hat, coat, or vest of solid visible international orange. Archery hunters during archery only deer seasons and hunters for dove, turkey, ducks, geese and other migratory birds (including crows) are exempt from this requirement while hunting for those species.

50-11-365 – All users except hunters for dove, ducks, geese, and other migratory birds including crows must wear a hat, coat, or vest of solid international orange during any deer hunting season.

Camping

8.1 – Camping is not permitted on WMA lands except in designated camp sites.

Trapping

9.1 – Trapping on WMA lands is not permitted.

Waterfowl & Dove Regulations

Dates, times, locations and regulations for hunts on designated Dove Management Areas (public dove fields) can be found beginning on page 80. Specific seasons, limits and regulations for waterfowl hunting can be found beginning on page 70.

10.1 – Unless specially designated by the Department as a Wildlife Management Area for Waterfowl or a Wildlife Management Area for Dove, all Wildlife Management Areas are open during the regular season for hunting and taking of migratory birds except where restricted.

10.2 – The Department may designate sections of Wildlife Management Areas and other lands and waters under the control of the Department as Designated Waterfowl Management Areas or Designated Dove Management Areas. All laws and regulations governing Wildlife Management Areas apply to these special areas. In addition, the Department may set special shooting hours, bag limits and methods of hunting and taking waterfowl and doves on those areas. All State and Federal migratory bird laws and regulations apply. Regulations pertaining to the use of Dove Management Areas will be filed annually.

10.3 – On areas where blinds are not provided,

only portable blinds which are removed at the conclusion of the hunt or temporary blinds of native vegetation may be used. Temporary blinds once vacated may be used by other hunters.

10.4 – On Designated Waterfowl Areas, no species other than waterfowl may be taken during waterfowl hunts. On Designated Dove Management Areas no species other than doves may be taken during dove hunts. Only dove hunting is allowed at Lake Wallace WMA.

10.5 – No fishing is permitted in any Category 1 Designated Waterfowl Management Area during scheduled waterfowl hunts.

10.6 – The Bordeaux Work Center Area is closed to hunting except for special hunts as designated by the SCDNR.

10.7 – Sandy Beach Waterfowl Area and the impoundments on Bonneau Ferry WMA are closed to public access from Nov. 1 - Feb. 8, except for special hunts designated by the Department.

10.8 – Broad River Waterfowl Management Area is closed to public access during the period Nov. 1 - Feb. 8, except for special hunts designated by the Department.

10.9 – Impoundments on Bear Island, Donnelly, Samworth, Santee Coastal Reserve and Santee Delta WMAs are closed to all public access during the period Nov. 1 until Feb. 8, except during special hunts designated by the Department. All public access during the period Feb. 9 until Oct. 31 is limited to designated areas. On Bear Island WMA, Matthews Canal is closed to all hunting from Nov. 1 - Feb. 15 beyond a point 0.8 mile from the confluence of Matthews Canal with the South Edisto River.

10.10 – Potato Creek Hatchery Waterfowl Area is closed to public access and fishing one week prior to and two weeks after the Federal Waterfowl Season, except for scheduled waterfowl hunts. All hunters must enter and leave the Potato Creek Hatchery Waterfowl Area through the designated public landing on Secondary Road 260 and complete a data card and deposit card in receptacle prior to leaving the area. No airboats are allowed for hunting or fishing and no hunting from Secondary Road 260.

10.11 – On Hatchery WMA, hunters must leave the area by 1 PM except on the last Sat. of waterfowl season when hunters may hunt until sunset. Each hunter is limited to 25 Federally-approved nontoxic shot shells per hunt. No airboats are allowed in the Hatchery WMA for hunting or fishing during the period Nov. 15 - Jan. 31. No fishing is allowed during scheduled waterfowl hunts.

10.12 – On Crackerneck WMA waterfowl may be hunted only on Friday, Saturday and Thanksgiving Day within the regular migratory bird seasons and no hunting on Dec. 25; Fant's Grove WMA is open AM only

on Wednesdays and Saturdays during the regular migratory bird seasons; Palachucola WMA, Tillman Sand Ridge WMA, Hamilton Ridge WMA and Webb WMA are open AM only for waterfowl hunting during the regular migratory bird seasons only on days when small game hunting is allowed.

10.13 – Category I Designated Waterfowl Areas include Beaverdam, Bonneau Ferry, Broad River, Clemson, Sandy Beach, Santee Coastal Reserve, Samworth, Santee-Delta, Tibwin, Bear Island, Wateree River HP, and Donnelly Wildlife Management Areas. Hunting in Category I Designated Waterfowl Areas is by special permit obtained through annual computer drawing.

10.14 – Category II Designated Waterfowl Areas include Biedler Impoundment, Carr Creek (bounded by Samworth WMA), Little Carr Creek (bounded by Samworth WMA), Lake Cunningham, Lake Blalock, Russell Creek, Monticello Reservoir, Parr Reservoir, Duncan Creek, Dunaway, Dungannon, Enoree River, Moultrie, Hatchery, Hickory Top, Hickory Top Greentree Reservoir, Lancaster Reservoir, Turtle Island, Little Pee Dee River HP Complex (including Ervin Dargan, Horace Tilghman), Great Pee Dee River HP, Potato Creek Hatchery, Sampson Island Unit (Bear Island), Tyger River, Marsh, Wee Tee, 40 Acre Rock, Waccamaw River Heritage Preserve,

Ditch Pond, Santee Cooper and Woodbury Waterfowl Management Areas. Hunting on Category II Designated Waterfowl Areas is in accordance with scheduled dates and times.

10.15 – On Hickory Top WMA, public waterfowl hunting without a Wildlife Management Area (WMA) permit is allowed on all land and water below 76.8'. Waterfowl hunting at or above elevation 76.8' requires a WMA permit. A WMA permit is required for waterfowl hunting in Hickory Top Greentree Reservoir.

10.16 – Designated Dove Management Areas include all dove management areas as published by the Department in the annual listing of WMA public dove fields and are subject to regulations filed annually.

10.17 – Hickory Top Greentree Reservoir is closed to hunting access Nov. 1 until Mar. 1, except for special hunts designated by SCDNR. All hunters must accurately complete a data card and deposit card in receptacle prior to leaving the area. Hunting hours are from 30 minutes before legal sunrise until 11:00 AM. Hunters may not enter the area prior to 5:00 AM on hunt days. No open season from roads or the dike system. Hunters may only use electric motors on boats.

10.18 – On all state-owned, US Forest Service and other federally-owned Category I and II Waterfowl Management Areas, each hunter

is limited to 25 Federally-approved non-toxic shells per hunt.

10.19 – On Enoree River, Lake Blalock, Dunaway, Duncan Creek, Russell Creek and Tyger River Waterfowl Areas, data cards are required for hunter access during scheduled waterfowl hunts. Completed data cards must be returned daily upon leaving each of these areas. Hunters may not enter the areas prior to 5:00 AM on hunt days.

10.20 – Woodbury Waterfowl Management Area includes all SCDNR/owned property south of US Highway 378 and bounded on the west by the Great Pee Dee River and Bluff Road and to the east by the Little Pee Dee River except no waterfowl hunting allowed in the area known as Hass Pond that is bounded on all sides by Hass Pond Road.

Amphibians & Reptiles

11.1 – Taking of any amphibian or reptile, except the bullfrog, is prohibited on any Department owned Wildlife Management Areas without written permission of the Department.

Regulations for hunting near a Duke Energy right of way

For all of us at Duke Energy, safety is an important priority – particularly during hunting season. Structures such as hunting stands or blinds may be dangerous if located on or near electrical facilities. Because of the safety risk, these types of structures should not be placed within our electric transmission rights of way, such as near transmission towers, power poles and other areas. Structures in violation of this regulation are subject to immediate removal and/or legal action by Duke Energy.

Questions? Call your area's Customer Call Center:

- Duke Energy Progress 800.452.2777
- Duke Energy Carolinas 800.777.9898
- Duke Energy Florida 800.700.8744
- Duke Energy Indiana 800.521.2232
- Duke Energy Kentucky/Ohio 800.544.6900

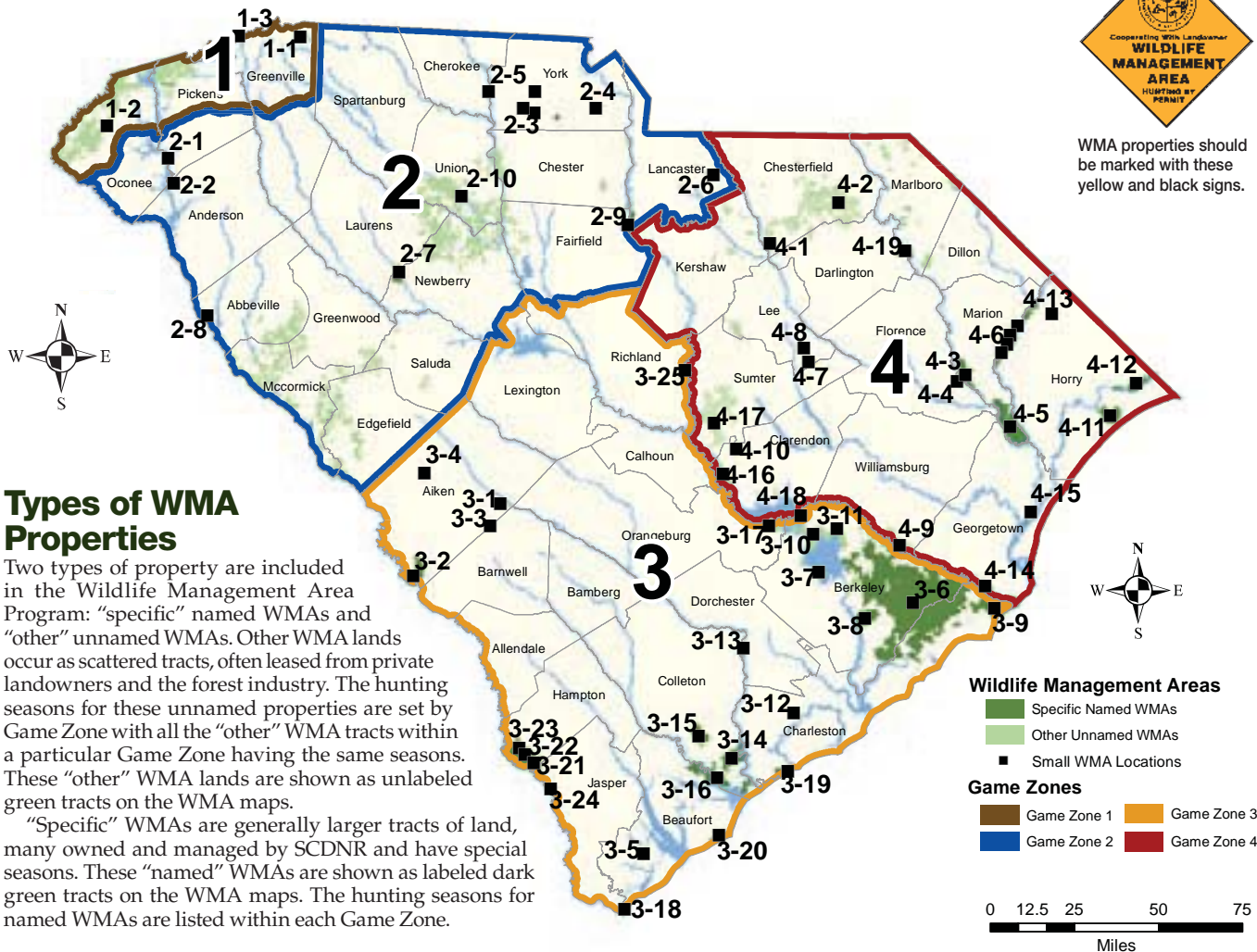
www.duke-energy.com/safety/right-of-way-management.asp



WILDLIFE MANAGEMENT AREAS



WMA properties should be marked with these yellow and black signs.



Types of WMA Properties

Two types of property are included in the Wildlife Management Area Program: “specific” named WMAs and “other” unnamed WMAs. Other WMA lands occur as scattered tracts, often leased from private landowners and the forest industry. The hunting seasons for these unnamed properties are set by Game Zone with all the “other” WMA tracts within a particular Game Zone having the same seasons. These “other” WMA lands are shown as unlabeled green tracts on the WMA maps.

“Specific” WMAs are generally larger tracts of land, many owned and managed by SCDNR and have special seasons. These “named” WMAs are shown as labeled dark green tracts on the WMA maps. The hunting seasons for named WMAs are listed within each Game Zone.

Game Zone 1 Named WMAs

- | | |
|--|-----------------------------|
| 1-1 Glassy Mountain Archery/Chestnut Ridge | 1-2 Stumphouse |
| | 1-3 Caesars Head/ Jones Gap |

Game Zone 2 Named WMAs

- | | |
|-------------------------------------|------------------------|
| 2-1 Keowee | 2-5 Worth Mountain |
| 2-2 Fant’s Grove | 2-6 Forty Acre Rock HP |
| 2-3 Draper, McConnells, Ross, Kirsh | 2-7 Belfast |
| 2-4 Rock Hill Blackjacks HP | 2-8 McCalla |
| | 2-9 Liberty Hill |
| | 2-10 Delta |

Game Zone 3 Named WMAs

- | | | |
|------------------------------|----------------------------|-------------------------------|
| 3-1 Aiken Gopher Tortoise HP | 3-9 Santee Coastal Reserve | 3-18 Turtle Island |
| 3-2 Crackerneck | 3-10 Moultrie | 3-19 Botany Bay Plantation HP |
| 3-3 Ditch Pond HP | 3-11 Canal | 3-20 Old Island HP |
| 3-4 Henderson HP | 3-12 Dungannon HP | 3-21 Palachucola |
| 3-5 Victoria Bluff HP | 3-13 Edisto River WMA | 3-22 Webb |
| 3-6 Francis Marion NF | 3-14 Bear Island | 3-23 Hamilton Ridge |
| 3-7 Hatchery | 3-15 Donnelley | 3-24 Tillman Sand Ridge HP |
| 3-8 Bonneau Ferry | 3-16 St. Helena Sound HP | 3-25 Wateree River HP |
| | 3-17 Santee Cooper | |

Game Zone 4 Named WMAs

- | | | |
|-----------------------------|--------------------------|------------------------------|
| 4-1 McBee | 4-7 Longleaf Pine HP | 4-14 Santee Delta |
| 4-2 Sand Hills State Forest | 4-8 Lynchburg Savanna HP | 4-15 Samworth |
| 4-3 Marsh | 4-9 Wee Tee | 4-16 Hickory Top |
| 4-4 Pee Dee Station Site | 4-10 Oak Lea | 4-17 Manchester State Forest |
| 4-5 Woodbury | 4-11 Lewis Ocean Bay HP | 4-18 Santee Dam |
| 4-6 Little Pee Dee River HP | 4-12 Waccamaw River HP | 4-19 Great Pee Dee HP |
| | 4-13 Cartwheel Bay HP | |

For detailed maps showing all WMAs, contact your local SCDNR Wildlife Management Office (see page 6) or write: WMA Maps, P.O. Box 167, Columbia, SC 29202, 803-734-3886. Request by map number found on page 86.

New: To view and print WMA maps from the internet, go to www.dnr.sc.gov/wma/maps.html

Sawtooth Farms

Orangeburg, SC



Providing year-round pallet delivery of shelled corn to
Retailers • Hunting Lodges • Plantations

803-934-6346 • 803-308-2837 • dkinney@sawtoothfarms.org



33RD ANNUAL PALMETTO SPORTSMEN'S CLASSIC



Keep watching our web site for
announcements about new and exciting
entertainment and seminars !!!

MARCH 24-26, 2017

State Fairgrounds ■ Columbia, SC

HOURS OF OPERATION

Fri., March 24 noon to 8 PM
Sat., March 25 9 AM to 7 PM
Sun., March 26 11 AM to 6 PM



PSC@DNR.SC.GOV — — 803-734-4008 — — WWW.PSCCLASSIC.COM

WMA MANAGEMENT AREAS

Game Zone 1 WMAs Only

- Mountain Hunt Unit: Oconee, Pickens & Greenville counties
- Game Zone 1 consists of all properties north of the main line of the Norfolk Southern Railroad from the Georgia State line to South Carolina Highway 183 in Westminster, then north of SC Highway 183 to intersection of SC Highway 183 and the Norfolk So. Railroad main line in Greenville and then north of the main line of the Norfolk So. Railroad to the Spartanburg County line.
- Only 1 individual antlerless deer tag may be used in Game Zone 1.
- Archery hunters are allowed to take either-sex during all deer archery only and primitive weapons seasons without having to tag the animal.
- Statewide WMA limit for deer is two deer per day, 5 deer total, no more than two bucks, unless otherwise specified. Antlerless deer limit is one deer per day, unless otherwise specified. Buck only, except either-sex on Game Zone either-sex days.
- Feral hogs and coyotes may be taken during all hunts. No hog hunting with dogs except during special hog hunts with dogs and party dog bear hunts.
- Individual antlerless deer tags are valid on WMA lands in Game Zone 1 starting Oct. 1. For all WMAs combined in Game Zones 1, only 1 individual antlerless deer tag may be used during primitive weapons or gun seasons. Use of tags does not change the type of weapon allowed during specific seasons.

SCDNR Offices

Wildlife Office

311 Natural Resources Drive, Clemson, SC 29631, 864-654-1671

Law Enforcement Office

311 Natural Resources Drive, Clemson, SC 29631, 864-654-8266

AREA/ METHODS	SEASONS	LIMITS
DEER – OTHER WMAs (INCLUDING US FOREST SERVICE LANDS IN WMA)		
Youth Deer Hunt Day	Jan. 7 (see pages 107-108 for WMAs)	2 deer total, 1 antlerless
Deer Primitive Weapons	Oct. 1-10 • Archery either-sex • Muzzleloader buck only	Statewide WMA Limits
Archery only	Oct. 17-29 either-sex • No muzzleloader hunting	
Gun Hunts	Oct. 11-15, Oct. 31-Dec. 31 buck only except either sex on Nov. 12, 19, 26 • No deer hunting on Long Creek Tracts (Oconee Co.) on or after Thanksgiving Day.	

AREA/ METHODS	SEASONS	LIMITS
BEAR		
	<ul style="list-style-type: none"> • Tag required to take bear (see Bear on page 62). • No Sunday hunting for bear on WMA. • Harvested bear must be reported within 24 hours to Clemson SCDNR at 864-654-1671, ext. 24. 	
Still Hunt (No Dogs)	Oct. 17-22 • No sow with cubs, no bears 100 lbs or less	1 bear
Party Dog Hunts	Oct. 24-29 • No sow with cubs, no bears 100 lbs or less • Hogs allowed. • All parties (maximum party size of 25) must register by application due Sept. 1. For application call Clemson Office @ 864-654-1671 ext. 19 or 24 or download at www.dnr.sc.gov/bearhunting . Groups hunting together are considered 1 party.	5 bears per party
HOG		
Hog Hunts (with dogs)	Jan. 2-Jan. 10, Mar. 20-28, Refer to reg. 2.16 on page 88.	No limit
SMALL GAME – OTHER WMAs		
	<ul style="list-style-type: none"> • Refer to chart on page 66. • No small game hunting on WMAs is allowed before Sept. 1 or after Mar. 1. • Additional small game season restrictions may apply to specific WMAs. 	

NAMED WMAs

Caesars Head/Jones Gap WMA Greenville County

SC Dept. of Parks, Recreation and Tourism special permit required. See Game Zone 1 WMA map for more details.

Glassy Mountain Archery Only Area – Chestnut Ridge Heritage Preserve (Greenville County)

Located on the southwest side of the South Pacolet River and west of the junction of the South Pacolet River and its main tributary creek as posted.

Deer (no dogs)	Oct. 1- Dec. 31 Archery either-sex	Statewide WMA limits
-----------------------	------------------------------------	----------------------

Long Creek Tract (Forest Service) Oconee County

Game Zone 1 seasons, except small game only between Thanksgiving Day and Mar. 1.

Stumphouse WMA (Youth Area) Oconee County

Game Zone 1 seasons, limits, rules and regulations apply except small game hunting only from Thanksgiving Day through Mar. 1. In order to fish or hunt Stumphouse WMA each adult (21 or older) must have at least one youth 17 or under accompanying them. Senior citizens over 65 years of age are exempted from accompanying a youth in order to fish. No motorized vehicles or horses allowed on property. Walk-in use only.

Game Zone 2 WMAs Only

- Abbeville, Anderson, Chester, Cherokee, Edgefield, Fairfield, Greenwood, Lancaster, Laurens, McCormick, Newberry, Saluda, Spartanburg, Union, York counties & those portions of the counties of Greenville, Oconee & Pickens south of the Game Zone 1 line.
- Statewide WMA limit for deer is two deer per day, 5 deer total, no more than two bucks, unless otherwise specified. Antlerless deer limit is one deer per day, unless otherwise specified. Buck only, except either-sex on Game Zone either-sex days.
- Individual antlerless deer tags are valid on WMA lands in Game Zone 2 starting Oct. 1. For all WMAs combined in Game Zones 2-4, a maximum of 2 individual antlerless deer tags may be used during primitive weapons or gun seasons. Use of tags does not change the type of weapon allowed during specific seasons.
- Feral hogs and coyotes may be taken during all hunts. No hog hunting with dogs except during special hog hunts with dogs.
- Archery hunters are allowed to take either-sex during all deer archery only and primitive weapons seasons without having to tag the animal.

SCDNR Offices

Wildlife Offices

311 Natural Resources Drive, Clemson, SC 29631, 864-654-1671; 2751 Highway. 72 E., Abbeville, SC, 864-223-2731

Law Enforcement Office

311 Natural Resources Drive, Clemson, SC 29631, 864-654-8266; 2762 Wildlife Lane West Columbia, SC 29172, 803-755-1822

AREA/ METHODS	SEASONS	LIMITS
DEER – OTHER WMAs (INCLUDING US FOREST SERVICE LANDS IN WMA)		
Youth Deer Hunt Day	Jan. 7 (see pages 107-108 for WMAs)	2 deer total, 1 either-sex
Archery only	Sept. 15-30 either-sex	Statewide WMA Limits
Deer Primitive Weapons	Oct. 1-10 muzzleloader buck only, archery either sex	
	Oct. 1, 8 either-sex, muzzleloader	
Gun Hunts	Oct. 11-Dec. 31, buck only, except either sex on Oct. 15, Nov. 12, 19, 26 Dec. 31	
Hog Hunts (with dogs)	Jan. 2-10, Mar. 20-28, Refer to Reg. 2.16 on page 88.	No Limit

SMALL GAME – OTHER WMAs

- Refer to WMA seasons in chart on page 66.
- No small game hunting on WMAs is allowed before Sept. 1 or after Mar. 1.
- Additional small game season restrictions may apply to specific WMAs.

AREA/ METHODS	SEASONS	LIMITS
------------------	---------	--------

NAMED WMAs

Belfast WMA Laurens and Newberry Counties

- Quality Deer Management Area.
- Bucks must have a minimum 4 points on one side or a minimum 12" antler spread.
- Belfast WMA is closed to public access of all types from one half hour after sunset until one half hour before sunrise except for hunts regulated by SCDNR.
- Hunters may not enter the WMA prior to 5:00 AM on designated hunts.
- Public visitation is not allowed during scheduled deer or turkey hunts.
- Data/use cards are required for hunters, fishermen, and all other WMA users. Completed cards must be returned daily upon leaving the WMA.

Deer Archery	Sept. 15-30 either-sex	Statewide WMA Limits
Deer Gun Hunts	Still gun hunts by drawing only. See WMA Public Draw Hunts on page 88.	
Small Game	Nov. 24-Mar. 1 except no small game hunting on Jan. 7 • No fox squirrel hunting	WMA bag limits. Refer to chart on page 66.

Broad River Waterfowl Management Area, Fairfield County

Deer Archery	Sept. 15-Oct. 31 either-sex	Statewide WMA Limits
Small Game	Feb. 8-Mar. 1	Game Zone 2 Limits

Delta South WMA, Union County

Deer Archery	Sept. 15-30	Game Zone 2 Limits
Deer Gun Hunts	Nov. 2-Nov. 19 Wed. & Sat. Only	Game Zone 2 Limits
Small Game (no fox squirrels)	Nov. 24-Mar. 1	Game Zone 2 Limits

Draper WMA, York County

- Data cards required for all hunter access. Completed data cards must be returned daily upon leaving.

Deer	Game Zone 2 WMA Seasons	Statewide WMA Limits
Small Game		
Quail	Dec. 3, 10, 21, 28 Jan. 4, 7, 11, 14 sunrise until 30 min. before official sunset	Game Zone 2 Limits
Rabbit	Jan. 18, 21, 25, 28 Feb. 1, 4, 8, 11, 15, 18, 22, 25 Mar. 1	Game Zone 2 Limits
Small Game other than Dove, Quail & Rabbit	<ul style="list-style-type: none"> • Regular Zone 2 seasons & limits except no hunting before Sept. 1 or after Mar. 1. • No Fox Squirrel Hunting. 	

WILDLIFE MANAGEMENT AREAS

AREA/METHODS	SEASONS	LIMITS
--------------	---------	--------

Fant's Grove WMA Oconee, Pickens & Anderson Counties

- Quality Deer Management Area
- Bucks must have a minimum 4 points on one side or a minimum 12-inch antler spread.

Deer Archery	Oct. 15-Dec. 22 either-sex Bucks must have at least 4 points on 1 side or minimum 12 inch antler spread.	Statewide WMA Limits
---------------------	---	----------------------

Small Game	<ul style="list-style-type: none"> WMA seasons and limits except no hunting during Archery Deer Hunts (Oct. 15-Dec. 22) and Youth hunt (Oct. 1). No hog hunting with dogs. Dove hunting allowed on designated Dove Fields. Raccoon and Opossum hunting allowed at night. Waterfowl hunting allowed on Wed. and Sat. AM only during federal waterfowl season. Refer to WMA seasons in chart on page 66. 	
-------------------	--	--

Keowee WMA Oconee & Pickens Counties

- Quality Deer Management Area
- Bucks must have a minimum 4 points on one side or a minimum 12-inch antler spread.

Deer Archery	Oct. 15-Dec. 22 either-sex	Statewide WMA Limits
---------------------	----------------------------	----------------------

Small Game	<ul style="list-style-type: none"> WMA seasons & limits except no hunting during Archery Deer Hunts Oct. 15-Dec. 22 and No hog hunting with dogs. Shotguns only north of Highway 123, west of the Keowee arm of Lake Hartwell and west of Highway 291. All other areas archery only. Raccoon and Opossum hunting allowed at night. Refer to WMA seasons in chart on page 66. 	
-------------------	--	--

Liberty Hill WMA Lancaster County

- Quality Deer Management Area
- Antlered deer must have at least 4 points on 1 side or a minimum 12-inch antler spread.
- All visitors must sign in and out at kiosks
- No ATVs

Deer Archery	Sept. 15-30 either sex	Statewide WMA Limits
---------------------	------------------------	----------------------

Deer Primitive Weapons	Oct. 1-10 buck only, Oct. 1, 8 either sex	Statewide WMA Limits
-------------------------------	---	----------------------

Deer Gun Hunts	Oct. 11-Dec. 31 buck only, except either sex on Oct. 15, Nov. 12, 19, 26, Dec. 31	Statewide WMA Limits
-----------------------	---	----------------------

Small Game (includes raccoon and opossum)	WMA seasons and limits. Refer to chart on page 66. • No fox squirrel hunting.	Statewide WMA Limits
--	--	----------------------

McCalla WMA Abbeville County

- Quality Deer Management Area.
- Bucks must have a minimum 4 points on one side or a minimum 12-inch antler spread.

Deer	Game Zone 2 WMA Seasons	Statewide WMA Limits
-------------	-------------------------	----------------------

Small Game	WMA seasons and limits. Refer to chart on page 66.	
-------------------	--	--

Hog Hunts (with dogs)	Jan. 2-10, Mar. 20-28, Refer to Reg. 2.16 on page 88.	No Limit
------------------------------	---	----------

AREA/METHODS	SEASONS	LIMITS
--------------	---------	--------

Rock Hill Blackjacks HP WMA York County

Archery	Sept. 15-Dec. 31, either-sex	Statewide WMA Limits
----------------	------------------------------	----------------------

Small Game	Small game hunting is not allowed.	
-------------------	------------------------------------	--

Worth Mountain WMA York County

- Quality Deer Management Area
- Antlered Bucks must have 4 points on one side or a minimum 12-inch antler spread.
- All visitors must sign in and out at kiosks

Deer	Game Zone 2 WMA Seasons	Statewide WMA Limits
-------------	-------------------------	----------------------

Small Game	Zone 2 seasons and limits. Refer to WMA seasons in chart on page 66.	
-------------------	--	--

40 Acre Rock HP WMA Lancaster County

Deer	Game Zone 2 WMA Seasons	Statewide WMA Limits
-------------	-------------------------	----------------------

Small Game	WMA seasons and limits. Refer to chart on page 66.	
-------------------	--	--

Game Zone 3 WMAs Only

- Aiken, Allendale, Bamberg, Barnwell, Beaufort, Berkeley, Calhoun, Charleston, Colleton, Dorchester, Hampton, Jasper, Lexington, Orangeburg & Richland counties.
- Statewide WMA limit for deer is two deer per day, 5 deer total, no more than two bucks, unless otherwise specified. Antlerless deer limit is one deer per day, unless otherwise specified. Buck only, except either-sex on Game Zone either-sex days.
- Individual antlerless deer tags are valid on WMA lands in Game Zone 3 starting September 15. For all WMAs combined in Game Zone 2-4, a maximum of 2 individual antlerless deer tags may be used during primitive weapons or gun deer seasons. Tags not valid on deer hunts with dogs.
- Feral hogs and coyotes may be taken during all hunts. No hog hunting with dogs except during special hog hunts with dogs.

SCDNR Offices

Wildlife Offices

1000 Assembly St., Columbia, SC, 803-734-3886
 305 Black Oak Rd, Bonneau, SC, 843-825-3387
 585 Donnelley Dr., Highway 17, Green Pond, SC, 843-844-8957
 Webb Center, 1282 Webb Ave., Garnett SC, 803-625-3569
 P. O. Box 23, New Ellenton, SC, 803-725-3663
 Francis Marion Hunt Unit, 843-825-3387
 Dungannon HP WMA, 843-844-8957

Law Enforcement Offices

2762 Wildlife Lane, West Columbia, SC, 803-755-1822
 217 Ft. Johnson Rd., Charleston, SC, 843-953-9307

AREA/METHODS	SEASONS	LIMITS
--------------	---------	--------

OTHER WMAs		
Youth Deer Hunt Day	Jan. 7 (see pages 107-108 for WMAs)	2 deer total, 1 antlerless

Deer Archery	Sept. 15-30 either-sex	Statewide WMA Limits
---------------------	------------------------	----------------------

Deer Gun Hunts	Oct.1-Dec. 31 buck only, except either sex on Oct. 1, 8, 15, Nov. 12, 19, 26, Dec. 31
-----------------------	---

Small Game	Refer to WMA seasons in chart on page 66.	
-------------------	---	--

AREA/ METHODS	SEASONS	LIMITS
NAMED WMAs		
Aiken Gopher Tortoise Heritage Preserve WMA Aiken County		
Deer Archery	Sept. 15-30, either-sex	Statewide WMA Limits
Deer Gun Hunts	Oct. 1-Dec. 31 buck only, except either sex on Oct. 1, 8, 15, Nov. 12, 19, 26, Dec. 31	
<ul style="list-style-type: none"> No buckshot or dogs allowed. All reptiles and amphibians are protected. 		
Small Game	Nov. 24-Mar. 1 • No fox squirrel hunting.	Game Zone 3 Limits
Bear Island WMA Colleton County		
<ul style="list-style-type: none"> Quality Deer Management Area Data/use cards are required for hunters, fishermen, and all other WMA users. Completed cards must be returned daily upon leaving the WMA. Antlered deer must have at least 4 points on one side or a minimum 12" antler spread. All hunters must sign in and out at the Bear Island check station Hunting in designated areas only. Campground closes Nov. 2 		
Archery	Oct. 1-10 either-sex	Statewide WMA Limits
Gun Hunts (rifles only)	Still gun hunts by drawing only. See WMA Public Draw Hunts on page 88.	
Hog Hunts (with Dogs)	Mar. 2-4 Refer to Reg. 2.16 on page 88 Gate opens at 5:00 AM	No Limit
Small Game (including raccoon and opossum)	Feb. 8 – Mar. 1 No fox squirrel hunting	Game Zone 3 Limits
Waterfowl	Waterfowl hunts by drawing only. See WMA Public Draw Hunts on page 88.	
Bonneau Ferry WMA Berkeley County		
<ul style="list-style-type: none"> Adult/Youth side A open only to youth 17 and younger who must be accompanied by only one adult 21 years of age or older. Youth hunters must carry a firearm and hunt. Adults with youth hunters may also carry a firearm and hunt. Includes all big game and small game hunts. Data/use cards are required for hunters, fishermen, and all other WMA users. Completed cards must be returned daily upon leaving the WMA. Hunted areas are closed to general public access during scheduled deer, turkey and waterfowl hunts. All deer must be checked at the main entrance. Hunting access by boat is prohibited. Hunters may not enter WMA before 5:00 AM. 		
Deer Archery (Side B)	Sept. 15-30 either-sex	Statewide WMA Limits
Deer Still Gun Hunts (Side B)	No open season except for hunters selected by computer drawing. Oct. 6-8, 13-15, 20-22, 27-29 Nov. 3-5, 10-12, 17-19	
Deer Still Gun Hunts: Adult/Youth Only (Side A)	Sept. 16-Nov. 19, Nov. 30-Dec. 17 (Wed., Fri., Sat. only) and Nov. 21-26, Dec. 20-31 either-sex	
Small Game (including raccoon and opossum) (Sides A & B)	Jan. 2-Mar. 1 • No fox squirrel or fox hunting.	Game Zone 3 Limits

AREA/ METHODS	SEASONS	LIMITS
Botany Bay Plantation HP WMA Charleston County		
<ul style="list-style-type: none"> Quality Deer Management Area Bucks must have a minimum 4 points on one side or a minimum 12" antler spread. All hunters, fishermen and visitors must obtain a day use pass, fill out the requested information and follow all instructions on the pass. Hunting access by boat is prohibited. 		
Deer Archery	Sept. 15-Oct. 10, Nov. 21-26, Dec. 26-31 either-sex	Statewide WMA Limits
Deer Gun Hunts	Still gun hunts by drawing only. See WMA Public Draw Hunts on page 88.	
Other Small Game (including raccoon and opossum)	Jan. 2-Mar. 1 (Wed. thru Sat. only) • No fox squirrel hunting	Game Zone 3 Limits
Canal WMA Berkeley County		
Dove	Designated fields on certain days. See Public Dove Fields List pg 80-83.	
Quail Only	See WMA Seasons in chart on page 66.	Game Zone 3 Limits
Crackerneck WMA Aiken County		
<ul style="list-style-type: none"> Quality Deer Management Area Antlered deer must have at least 4 points on one side or a minimum 12-inch antler spread. 		
Deer Archery	Oct. 7-8 either-sex	2 deer total No more than 1 buck
Deer Primitive Weapons	Oct. 14-15 either-sex	2 deer total, no more than 1 buck
Deer Gun Hunts		
Gun hunts on Fri., Sat. & Thanksgiving Day only during this period. Oct. 21-Dec. 31 buck only.		
Oct. 21-22, 28-29, Nov. 4-5, 11-12, 18-19, Dec. 2-3, either sex		
2 per day, 5 deer total, not to include more than 3 bucks.		
<ul style="list-style-type: none"> All individuals must sign in and out at gate. No buckshot or dogs allowed. Scouting days (no firearms or archery equipment) on Saturdays only during Sept. and Mar. Gate opens at 6:00 AM and closes at 8:00 PM. On deer hunt days, gate opens as follows: Oct., 4:30 AM-8:30 PM; Nov.-Dec., 4:30 AM-7:30 PM. For party dog hunts for hogs in Jan. & Feb., gate will be open from 5:30 AM-7:00 PM. 		
Hog Hunts (with Dogs)	Jan. 6, 13, 20, 27, Feb. 3, 10, 17, 24 Refer to Reg. 2.16 on page 88. Handguns only.	No Limit
Small Game except raccoon and opossum		
Fri., Sat. & Thanksgiving Day ONLY during regular Game Zone 3 seasons, except no hunting before Oct. 21 or after Feb. 25. Game Zone 3 limits.		
<ul style="list-style-type: none"> All individuals must sign in and out at gate. Bobcats, foxes, otters and fox squirrels may not be hunted. During hunts, gate hours will be as follows: Oct., 4:30 AM-8:30 PM; Nov. - Dec., 4:30 AM-7:30 PM; Jan. - Feb., 5:30 AM-7:00 PM. 		
Raccoon & Opossum		
Oct. 15-Dec. 31 Sat. nights only;		
Jan. 6-Feb. 25 Fri. & Sat. nights only		
Raccoons - 3 per party per night. Opossum no limit.		
<ul style="list-style-type: none"> All individuals must sign in and out at gate. Hunt hours are as follows: Sat. -1 hour after official sunset to midnight. Hunters must exit gate by 1:00 AM. Fri. -1 hour after official sunset to 1 hour before official sunrise. Hunters must exit gate by official sunrise. 		

WILDLIFE MANAGEMENT AREAS

AREA/ METHODS	SEASONS	LIMITS
Ditch Pond Heritage Preserve WMA Aiken/Barnwell County		
Deer Archery Only	Sept. 15-Dec. 31 either-sex	Statewide WMA Limits
Small Game (including raccoon and opossum)	Nov. 24-Mar. 1 • No fox squirrel hunting	Game Zone 3 Limits

Donnelley WMA Colleton County

- Quality Deer Management Area
- Data/use cards are required for hunters, fishermen, and all other WMA users. Completed cards must be returned daily upon leaving the WMA.
- Bucks must have a minimum 4 pts. on one side or a 12" minimum antler spread.
- Hunters must sign in and out at the check station.
- Hunting in designated areas only.
- Gates will open at 4:00 AM for deer hunts.
- All hogs harvested must be checked at the check station.

Deer Archery	Sept. 15-30 either-sex	Statewide WMA Limits
Deer Gun Hunts	Still gun hunts by drawing only. See WMA Public Draw Hunts on page 88.	
Hog Hunts (with Dogs)	Mar. 2-4 Refer to Reg. 2.16 on page 88. Gate opens at 5:00 AM	No Limit
Dove	Organized hunts only. Season and limits published in the Public Dove Fields List pg 80-83	
Small Game (including raccoon and opossum)	Nov. 24-Mar. 1 Gates will open at 6:00 am. • No fox squirrel hunting	Game Zone 3 Limits
Waterfowl	Waterfowl hunts by drawing only. See WMA Public Draw Hunts on page 88.	

Dungannon Heritage Preserve WMA Charleston County

Deer Archery	Sept. 15-Dec. 31 either-sex	Statewide WMA Limits
Small Game (including raccoon and opossum)	Nov. 24-Jan.31 • No fox squirrel hunting	Game Zone 3 Limits

Edisto River WMA Dorchester County

Archery	Sept. 15-Oct. 10 either-sex	Statewide WMA Limits
Still Gun Hunts	Oct. 11-Dec. 31 buck only except either sex on Oct. 15, Nov. 12, 19, 26, Dec. 31	
Raccoon & Opossum	Refer to chart on page 66	Game Zone 3 Limits
Other Small Game	Nov. 24-Mar. 1 • No fox squirrel hunting	Game Zone 3 Limits

Francis Marion Hunt Unit, Berkeley & Charleston Counties

- Tibwin special use area (in Wambaw) is closed to hunting except for special hunts.
- During still gun hunts for deer, there shall be no hunting or shooting from, on, or across any road open to vehicle traffic.
 - All deer harvested must be checked in. See WMA map #9 for a list of check stations.
 - No buckshot is allowed on still gun hunts.
 - Shotguns and buckshot only during dog drive hunts.
 - On either-sex deer hunts with dogs, all deer must be checked in by 1 hour after legal sunset.
 - No still gun or archery hunting during deer dog drive hunts.
 - On youth deer hunts, only youths 17 and younger may carry a gun and must be accompanied by an adult 21 years old or older.

AREA/ METHODS	SEASONS	LIMITS
------------------	---------	--------

Hog Hunts with dogs: Francis Marion National Forest

All Hunt Units	Mar. 20-25, May 22-27 Refer to Reg. 2.16 on page 88.	No Limit
-----------------------	---	----------

Still hog hunts no dogs: Francis Marion National Forest

All Hunt Units	Mar. 6-11, Refer to reg. 2.16 on page 88. No Buckshot.	No Limit
-----------------------	---	----------

Hellhole WMA Francis Marion National Forest

Deer Archery	Sept. 15-Oct. 10 either-sex	Statewide WMA Limits
Deer Still Gun Hunts	Oct. 11-Dec. 31 buck only, except either sex on Oct. 15, Nov. 12, 26, Dec. 31 No still hunting during scheduled dog drive hunts.	
Deer Dog Drive Hunt	Nov. 5, Dec. 3 buck only No still hunting and no rifles.	
Youth Only Dog Hunt	Nov. 19 either-sex	

Northampton WMA Francis Marion National Forest

Deer Archery	Sept. 15-Oct. 10 either-sex	Statewide WMA Limits
Deer Still Gun Hunts	Oct. 11-Dec. 31 buck only, except either sex on Oct. 15, Nov. 12, 19, Dec. 31. (No still hunting during scheduled dog drive hunts). Sept. 24, Oct. 5-6, Nov. 25, Dec. 28 buck only Dec. 10 either-sex.	
Deer Dog Drive Hunt	All deer must be checked at P&C Grocery, Handy Mart in Macedonia, Honey Hill Lookout Tower, Kangaroo in Jamestown, or Alvin One Stop on Dec.10 only.	
Youth Only Dog Hunt	Nov. 26 either-sex	

Santee WMA Francis Marion National Forest

Deer Archery	Sept. 15-Oct. 10 either-sex	Statewide WMA Limits
Deer Still Gun Hunts	Oct. 11- Dec. 31 buck only, except either sex on Nov. 12, 19, 26, Dec. 31 (No still hunting during scheduled dog drive hunts.) Dec. 10 either-sex Sept. 9-10, Oct. 19-20, Dec. 2 buck only	
Deer Dog Drive Hunt	All deer must be checked at Alvin One Stop, P&C Grocery, Handy Mart in Macedonia, Honey Hill Lookout Tower, or Kangaroo in Jamestown on Dec. 10.	
Youth Only Dog Hunt	Oct. 15 either-sex	

AREA/ METHODS	SEASONS	LIMITS
Wambaw WMA Francis Marion National Forest		
Seewee Special Use Area (no dogs)	Sept. 15-Dec. 31 either-sex	Statewide WMA Limits
Archery Only		
Deer Archery	Sept. 15-Oct. 10 either-sex	
Deer Still Gun Hunts	Oct. 11-Dec. 31 buck only, except either sex on Oct. 15, Nov. 12, 19, 26, Dec. 31 (No still hunting during scheduled dog drive hunts.) No buckshot.	
Deer Dog Drive Hunt	Sept. 23, Oct. 8, Nov. 16-17, Dec. 26-27 buck only, except either sex on Dec. 10 <ul style="list-style-type: none"> No deer hunting with dogs east of HWY 17. All deer must be checked at Handy Mart in Macedonia, P&C Grocery, Kangaroo in Jamestown, Alvin One Stop or Honey Hill Lookout Tower only on Dec. 10 	
Youth Only Dog Hunt	Oct. 22 either-sex	
Waterhorn WMA Francis Marion National Forest		
Deer Archery Only	Sept. 15-Oct. 10 either-sex	Statewide WMA Limits
Deer Primitive Weapons	Oct. 11-20 buck only, except either sex on Oct. 15	
Still Gun Hunts	Nov. 4-Dec. 31 (Fridays and Saturdays only) buck only except either sex on Nov. 12, 19, 26, Dec. 31	
Small Game: Francis Marion Hunt Unit		
<ul style="list-style-type: none"> Refer to WMA seasons in chart on page 66. Dogs are allowed during small game gun season only. Closed during scheduled deer hunting periods on Waterhorn and when dogs are used for deer on Wambaw, Northampton, Hellhole and Santee WMAs. No fox or coyote hunting with dogs on the Francis Marion NF. 		
Hamilton Ridge WMA Hampton County		
<ul style="list-style-type: none"> Quality Deer Management Area Bucks must have a minimum 4 points on one side or a minimum 12" antler spread. Data cards/use cards are required for hunters, fishermen and all other WMA users. Completed cards must be returned daily upon leaving Hamilton Ridge WMA. No ATVs allowed on area. Hunters may camp at designated camp ground one day prior to and during deer, hog and turkey hunts. 		
Deer Archery	Sept. 15-Oct. 10, either-sex	Statewide WMA Limits
Gun Hunts	Still gun hunts by drawing only. See WMA Public Draw Hunts on page 88.	
Hog Hunts (with Dogs)	Aug. 25-27, Mar. 2-4, May 11-13. See Reg. 2.16 on page 88.	No Limit
Quail	Jan. 11, 14, 25, 28, Feb. 1, 4, 15, 18. Shooting hours end 30 minutes prior to official sunset	Game Zone 3 Limits
Other Small Game (including raccoon and opossum)	Nov. 21-26, Dec. 15-Mar. 1 <ul style="list-style-type: none"> No fox squirrel hunting 	Game Zone 3 Limits

AREA/ METHODS	SEASONS	LIMITS
Hatchery WMA Berkeley County		
Deer Archery	No deer hunting with dogs. Sept. 15-Dec. 31 either-sex Hatchery is closed to fishing each Saturday morning during waterfowl season and all day the last Saturday of waterfowl season.	Statewide WMA Limits
Henderson Heritage Preserve WMA Aiken County		
Deer Archery Only	Sept. 15-Dec. 31 either-sex	Statewide WMA Limits
<ul style="list-style-type: none"> No Small Game Hunting 		
Moultrie Hunt Unit Berkeley County		
<ul style="list-style-type: none"> No hunting or shooting within 50 feet of the center of any road during gun hunts for deer except for SCDNR draw youth hunts. All deer harvested must be checked in. See WMA map #9 for a list of check stations. 		
Bluefield WMA: Adult/Youth area only Moultrie Hunt Unit		
<ul style="list-style-type: none"> Open only to youth 17 years of age or younger accompanied by an adult at least 21 years of age. Youth hunters must carry a firearm and hunt. Adults may also carry a firearm and hunt. 		
Deer Gun Hunts (no buckshot)	Sept. 17-Dec. 31 (Wed. & Sat. only) buck only, except either sex. Oct. 1, 8, 15, Nov. 12, 19, 26, Dec. 31. Open only to youth 17 years of age or younger accompanied by an adult at least 21 years of age. Youth hunters must carry a firearm and hunt. Adults may also carry a firearm and hunt.	Statewide WMA Limits
Small Game (including raccoon and opossum)	See chart on page 66 <ul style="list-style-type: none"> No fox squirrel hunting. 	Game Zone 3 Limits
Greenfield WMA Moultrie Hunt Unit		
Deer Still Gun Hunts	Sept. 15-Dec. 31 buck only, except either sex on Oct. 1, 15, 18, Nov. 12, 19, 26, Dec. 31 either-sex	Statewide WMA Limits
Small Game (including raccoon and opossum)	Nov. 24-Mar. 1 <ul style="list-style-type: none"> No fox squirrel hunting 	Game Zone 3 Limits
North Dike WMA Moultrie Hunt Unit		
Deer Gun Hunts	Sept. 15-Oct. 15 buck only except either sex on Oct. 1, 8, 15	Statewide WMA Limits
Small Game (including raccoon and opossum)	Jan. 2-Mar.1	Game Zone 3 Limits
<ul style="list-style-type: none"> Sandy Beach Waterfowl Area open for Raccoon hunting Feb. 2-28 		
Porcher & Hall WMA except Cross Station Special Use Area Moultrie Hunt		
Deer Archery	Sept. 15-Dec. 31 either-sex	Statewide WMA Limits
Small Game (including raccoon and opossum)	Jan. 2-Mar. 1 shotguns only <ul style="list-style-type: none"> No fox squirrel hunting. 	Game Zone 3 Limits

WILDLIFE MANAGEMENT AREAS

AREA/ METHODS	SEASONS	LIMITS
------------------	---------	--------

Old Island HP WMA Beaufort County

Deer Archery	Sept. 15-Dec. 31 either sex	Statewide WMA Limits
---------------------	-----------------------------	----------------------

Palachucola WMA Hampton & Jasper Counties

- Quality Deer Management Area.
- Bucks must have a minimum 4 points on one side or a minimum 12" antler spread.
- Data cards/use cards are required for hunters, fishermen and all other WMA users. Completed cards must be returned daily upon leaving Palachucola WMA.
- All deer must be checked at check station.
- Hunters may camp at Palachucola camping area one night prior to and during deer, hog and turkey hunts only.

Deer Archery	Sept. 15-Oct. 10, either-sex	Statewide WMA Limits
---------------------	------------------------------	----------------------

Deer Gun Hunts	Still gun hunts by drawing only. See WMA Public Hunt Drawings on page 88.	
-----------------------	---	--

Hog Hunts (with Dogs)	Aug. 25-27, Mar. 2-4, May 11-13 See Reg. 2.16 on page 88.	No limit
------------------------------	--	----------

Quail	Jan. 11, 14, 25, 28, Feb. 1, 4, 15, 18 • Shooting hours end 30 minutes prior to official sunset	Game Zone 3 Limits
--------------	--	--------------------

Other Small Game (including raccoon and opossum)	Nov. 21-26, Dec. 15-Mar. 1 • No fox squirrel hunting	Game Zone 3 Limits
---	---	--------------------

Santee Coastal WMA Charleston County

- Hunting is allowed on the mainland only.

Deer Archery	Sept. 15-Dec. 31 either-sex	Statewide WMA Limits
---------------------	-----------------------------	----------------------

Hog Hunts (with Dogs)	Mar. 13-18 Refer to Reg. 2.16 on page 88.	No Limit
------------------------------	--	----------

Small Game (including raccoon and opossum)	Nov. 24-Mar.1 • No fox squirrel hunting	Game Zone 3 Limits
---	--	--------------------

Santee Cooper WMA Orangeburg County

- Quality Deer Management Area
- Bucks must have minimum 4 points on one side, or a minimum 12 inch antler spread.
- Campground is open during scheduled deer hunts.
- Data/use cards are required for hunters, fishermen, and all other WMA users. Completed cards must be returned daily upon leaving the WMA.
- Hunters limited to 2 deer/tree stands which must contain label with hunter's name and address. No deer stand can be placed on WMA prior to Sept. 15

Deer Archery	Sept. 15-Oct. 31, either-sex	Statewide WMA Limits
---------------------	------------------------------	----------------------

Deer Primitive Weapons	Nov. 1-21 buck only except either sex on Nov. 12, 19
-------------------------------	--

Dove	Designated fields on certain days. See Public Dove Fields List on pages 80-83	
-------------	---	--

Small Game (including raccoon and opossum)	Nov. 24-Mar. 1 • No fox squirrel hunting	Game Zone 3 Limits
---	---	--------------------

St. Helena Sound HP WMA Beaufort and Colleton Counties

Hunting and camping by special permit which may be obtained at McKenzie Field Station, Bennetts Point, 843-844-8822. Camping Otter Island Only.

AREA/ METHODS	SEASONS	LIMITS
------------------	---------	--------

Ashe, Beet, Warren, Big, Otter & South Williman Islands

Deer Archery	Sept. 15-Dec. 31, either-sex	Statewide WMA Limits
---------------------	------------------------------	----------------------

Tillman Sand Ridge HP WMA Jasper County

- All deer must be checked at check station.
- All reptiles and amphibians are protected.
- Data/use cards are required for hunters, fishermen, and all other WMA users. Completed cards must be returned daily upon leaving the WMA.

Deer Archery	Sept. 15-Dec. 31, either-sex	Statewide WMA Limits
---------------------	------------------------------	----------------------

Small Game (including raccoon and opossum)	Nov. 24-Mar. 1 • No fox squirrel hunting	Game Zone 3 Limits
---	---	--------------------

Turtle Island WMA Jasper County

- Waterfowl hunting is open on Wed. & Sat. during the waterfowl season.
- Marsh hen hunting is open during the marsh hen season.
- Other small game hunting is closed.
- Deer hunting is closed.

Victoria Bluff HP WMA Beaufort County

All deer must be checked at check station.

Deer Archery	Sept. 15-Dec. 31, either-sex	Statewide WMA Limits
---------------------	------------------------------	----------------------

Small Game (including raccoon and opossum)	Jan. 2-Mar. 1 • No fox squirrel hunting • Shotguns only	Game Zone 3 Limits
---	---	--------------------

Wateree River HP WMA Richland County

- Data/use cards are required for all WMA users. Completed cards must be returned daily upon leaving the WMA.
- Quality Deer Management Area
- Bucks must have a minimum 4 points on one side or a minimum 12" antler spread.

Deer Archery	Sept. 15-Oct. 10 either sex	Statewide WMA Limits
---------------------	-----------------------------	----------------------

Deer Gun Hunts	Still gun hunts by drawing only. See WMA Public Lottery hunts on page 88.	
-----------------------	---	--

Other Small Game (including raccoon and opossum)	Jan. 2-Mar. 1 • No fox squirrel hunting	Statewide Bag Limits
---	--	----------------------

Webb WMA Hampton County

- Data/use cards are required for hunters, fishermen and all other WMA users. Completed cards must be returned daily upon leaving Webb WMA.

Deer Hunts	Still hunts by drawing only. See WMA Public Draw Hunts on page 88.	
-------------------	--	--

Hog Hunts (with dogs)	Aug. 25-27, Mar. 2-4, May 11-13 See WMA Reg. 2.16 on page 88.	No Limit
------------------------------	--	----------

Dove	Organized hunts only. Seasons and limits published in Public Dove Field list pg 80-83.	
-------------	--	--

Quail	Jan. 11, 14, 25, 28, Feb. 1, 4, 15, 18 Shooting hours end 30 minutes prior to official sunset	Game Zone 3 Limits
--------------	--	--------------------

Other Small Game (including raccoon and opossum)	Nov. 21-26, Dec. 15-Mar. 1 • No fox squirrel hunting	Game Zone 3 Limits
---	---	--------------------

Game Zone 4 WMAs Only

- Clarendon, Chesterfield, Darlington, Dillon, Florence, Georgetown, Horry, Kershaw, Lee, Marion, Marlboro, Sumter and Williamsburg counties
- Statewide WMA limit for deer is two deer per day, 5 deer total, no more than two bucks, unless otherwise specified. Antlerless deer limit is one deer per day, unless otherwise specified. Buck only, except either-sex on Game Zone either-sex days.
- Individual antlerless deer tags are valid on WMA lands in Game Zone 4 starting September 15. For all WMAs combined in Game Zone 2-4, a maximum of 2 individual antlerless deer tags may be used during primitive weapon or gun deer seasons.
- Feral hogs and coyotes may be taken during all hunts. No hog hunting with dogs except during special hog hunts with dogs.

SCDNR Offices

Wildlife Office

295 S. Evander Dr., Florence, SC, 843-661-4766
420 Dirlerton Rd, Georgetown, SC, 843-546-8119

Law Enforcement Office

295 S. Evander Dr., Florence, SC, 843-661-4766
2762 Wildlife Lane West Columbia, SC, 803-755-1822

AREA/ METHODS	SEASONS	LIMITS
DEER - OTHER WMAS		
Youth Deer Hunt Day	Jan. 7 (see pages 107-108 for WMAs)	2 deer total, 1 antlerless
Deer Archery	Sept. 15-Oct. 10, either-sex	Statewide WMA Limits
Deer Gun Hunts	Oct. 11-Dec. 31, buck only except either sex on Oct. 15, Nov. 12, 19, 26, Dec. 31	
Small Game	Refer to WMA seasons in chart on page 66. Additional small game season restrictions may apply to specific WMAs.	

NAMED WMAS

Cartwheel Bay Heritage Preserve WMA Horry County		
Bear	Oct 24-Nov. 5	1 bear
• Drawing only (see page 62) Horry, Georgetown, and Williamsburg counties only.		
Deer Archery	Sept. 15-Oct. 22, Nov. 7-Dec. 31 either-sex	Statewide WMA Limits
Small Game	Nov. 24-Mar. 1 • No fox squirrel hunting.	Game Zone 4 limits
Great Pee Dee Heritage Preserve WMA Darlington County		
• For big game hunting, access is restricted from two hours before sunrise to two hours after official sunset.		
• All visitors must sign in and out at the kiosk.		
• Gates may be locked in wet weather.		
Deer Archery	Sept. 15-Oct. 31 either-sex	Statewide WMA Limits
Deer Gun Hunts	Nov. 1-30, buck only, except either sex on Nov. 12, 19, 26	
Hog Still Gun Hunts	Mar. 6-11 Refer to Reg. 2.16 on page 88.	No limit
Hog Hunts (with Dogs)	Mar. 20-25, May 22-27 • Refer to Reg. 2.16 on page 88.	No Limit.
Raccoons and Opossum	Refer to WMA seasons in chart on page 66.	Game Zone 4 Limits
Other Small Game	Nov. 24-Mar. 1 • No fox squirrel hunting.	Game Zone 4 Limits

AREA/ METHODS	SEASONS	LIMITS
Hickory Top WMA Clarendon County		
• Data cards required for hunter access. Completed data cards must be returned daily upon leaving the WMA.		
• Hickory Top Greentree Res. is closed to public access from Nov. 1-Mar. 1 except for scheduled waterfowl hunts. WMA permit required.		
• Public waterfowl hunting without a Wildlife Management Area (WMA) permit will be allowed on all land and water below 76.8' following current regulations governing waterfowl hunting on Lake Marion. Waterfowl hunting at or above 76.8' elevation requires a WMA permit. Waterfowl hunters crossing WMA lands to hunt areas below 76.8' lake elevation must have their guns unloaded and cased.		
Deer Archery	Sept. 15-Oct. 31 either-sex	Statewide WMA Limits
Deer Primitive Weapons	Nov. 1-Dec. 31, buck only, except either sex on Nov. 12, 19, 26, Dec. 31	
Hog Hunts (with Dogs)	Mar. 13-18 • Refer to Reg. 2.16 on page 88.	No limit
Small Game (including raccoon and opossum)	Refer to WMA seasons in chart on page 66. • No fox squirrel hunting.	Game Zone 4 bag limits
Lewis Ocean Bay Heritage Preserve WMA Horry County		
• Deer hunters must sign in and out daily and record harvest at the kiosk.		
• Horseback riding is prohibited during all hunts.		
Bear	Oct 24-Nov. 5	1 bear
• Drawing only (see page 62) Horry, Georgetown, and Williamsburg counties only.		
Deer Archery	Sept. 15-Oct. 10 either-sex	Statewide WMA Limits
Deer Primitive Weapons	Oct. 11-20, buck only, except either sex on Oct. 15	
Deer Gun Hunts	Nov. 7-Dec. 31 buck only, except either sex on Nov. 12, 19, 26, Dec. 31	
Small Game (including raccoon and opossum)	Nov. 24-Mar.1 • No fox squirrel hunting.	Game Zone 4 limits
Liberty Hill WMA Kershaw County		
• Quality deer management area.		
• Antlered deer must have at least 4 points on 1 side or a minimum 12-inch antler spread.		
• All visitors must sign in and out of the kiosks.		
• No ATVs allowed.		
Deer Archery	Sept. 15-30 either sex	Statewide WMA Limits
Deer Primitive Weapons	Oct. 1-10 buck only, except either sex on Oct. 1, 8	Statewide WMA Limits
Deer Gun Hunts	Oct. 11-Dec. 31 buck only, except either sex on Oct. 15, Nov. 12, 19, 26, Dec. 31	Statewide WMA Limits
Small Game (includes raccoon and opossum)	WMA seasons and limits. Refer to chart on page 66. • No fox squirrel hunting.	Statewide WMA Limits

WILDLIFE MANAGEMENT AREAS

AREA/ METHODS	SEASONS	LIMITS
Little Pee Dee Heritage Preserve (HP) River Complex Horry & Marion Counties - Includes Little Pee Dee River HP, Tilghman HP, Dargan HP and Ward HP, also Upper Gunters Island and Huggins tracts in Horry County which are part of Dargan HP.		
Bear	Oct 24-Nov. 5	1 bear
• Drawing only (see page 62) Horry, Georgetown, and Williamsburg counties only.		
Deer Archery	Sept. 15-Oct. 10 either-sex	1 deer per day
Deer Primitive Weapons	Oct. 11-20, buck only Oct. 15, either-sex	Statewide WMA Limits
Deer Gun Hunts	Nov. 7-Dec. 31 buck only Nov. 12, 19, 26, Dec. 31, either-sex	
Hog Still Gun Hunts	Mar. 6-11 Refer to Reg. 2.16 on page 88.	No limit
Hog Hunt (with Dogs)	Mar. 13-18 Refer to Reg. 2.16 on page 88.	No limit
Raccoon and Opossum	Refer to WMA seasons in chart on page 66.	Game Zone 4 Limits
Other Small Game	Nov. 24-Mar. 1 • No fox squirrel hunting.	
Longleaf Pine Heritage Preserve WMA Lee County		
Deer Archery	Sept. 15-Oct. 10, Either-sex	Statewide WMA Limits
Deer Still Gun Hunts	Oct. 11-Dec. 31, buck only, except either sex on Oct. 15, Nov. 12, 19, 26, Dec. 31	Statewide WMA Limits
Small Game (includes raccoon and opossum)	Nov. 24-Mar.1 • No fox squirrel hunting.	Game Zone 4 Limits
Lynchburg Savanna Heritage Preserve WMA Lee County		
Small game only — no deer or turkey hunting		
Small Game	Refer to WMA seasons in chart on page 66. • No fox squirrel hunting.	
Manchester State Forest (MSF) WMA Sumter County		
<ul style="list-style-type: none"> • Dog hunt clubs by drawing only. SC Forestry Commission will handle drawing 803-494-8196. • Firearms must be unloaded and cased and not readily accessible when not in legal use. • No deer hunting or shooting from, on, or across any road open to vehicle traffic. • All hunters are reminded that the Palmetto Trail may be in use by nonhunters. • Self Deer Check at Battens, Tuomey Kiosk and Manchester SF Headquarters. • Some gates may be locked due to wet roads. 		
Deer Archery	Sept. 19-24 either-sex	Statewide WMA Limits
Deer Primitive Weapons	Sept. 26-Oct. 1 buck only	
Deer Gun Hunts	Oct. 3-8, 10-15, 18-21, 25-28 Nov. 1-4, 8-12, 15-18, 21-26, 28-Dec. 2, Dec. 6-9, 12-16, 19-23, 26-31 buck only, except either sex on Oct. 8, 15, Nov. 12, 26, Dec. 31	
Hog Hunts (with Dogs)	Mar. 13-18 Refer to Reg. 2.16 on page 88	
Small Game (includes raccoon and opossum)	Nov. 24-Mar. 1	Game Zone 4 Bag Limits

AREA/ METHODS	SEASONS	LIMITS
Dove	Sat. afternoons only during 1st season in designated fields only. Any day during 2nd and 3rd seasons on general forest and designated fields. See Public Dove Field Regulations pg 80-83.	
Marsh WMA Marion County		
<ul style="list-style-type: none"> • All visitors must sign in and out at the kiosk. • No ATV's. • A portion of Marsh WMA is designated a youth special hunt area and is closed for hunting except for special lottery hunts. 		
Deer Archery	Sept. 15-Oct. 31 either sex	Statewide WMA Limits
Deer Gun Hunts	Nov. 1-30, buck only, except either sex on Nov. 12, 19, 26	
Hog Still Gun Hunts	Mar. 6-11, Refer to Reg. 2.16 on page 88.	No Limit
Hog Hunts (with Dogs)	Mar. 20-25, May 22-27 Refer to Reg. 2.16 on pg. 88. Handguns only	No Limit
Raccoons & Opossums	• Refer to WMA seasons in chart on page 66.	Game Zone 4 Limits
Other Small Game	Nov. 24-Mar. 1 • No fox squirrel hunting	Game Zone 4 Limits
McBee WMA Chesterfield County		
• No ATV's.		
Deer Archery	Sept. 15-Oct. 10 either-sex	Statewide WMA Limits
Deer Gun Hunts	Oct. 11-Nov. 19 buck only, except either sex on Oct. 15, Nov. 12, 19	
Quail	Hunts by drawing only. See page 88.	
Other Small Game (including raccoon and opossum)	Regular Zone 4 seasons & limits except no hunting before Jan. 15 or after Mar. 1. • No fox squirrel hunting	Game Zone 4 Limits
Oak Lea WMA Clarendon County		
• Data cards required for hunter access. Completed data cards must be returned daily upon leaving Oak Lea WMA.		
Deer Archery	Sept. 15-30 either-sex	Statewide WMA Limits
Deer Still Gun Hunts	Hunters selected by drawing *Still Gun Hunters are selected by public drawing. Parties of 8-10. Parties may hunt for 4 days (Wed.-Sat.). Hunt periods will be approximately weekly (Oct. 1-Jan. 1). SC Forestry Commission will handle drawing 803-494-8196.	20 per hunt - party, either-sex
Small Game (including raccoon and opossum)	Small game (except quail) Jan. 2 - Mar. 1 except no small game hunting during scheduled quail hunts. • No fox squirrel hunting.	
Quail Hunts	Dec. 6, 13, 27, Jan. 7, 21, Feb. 4 Quail hunters must pick up and return data cards at kiosk.	12 per day
Dove	Dove hunts on designated days only. Seasons and limits published in the Public Dove Field List pg 80-83.	

AREA/ METHODS	SEASONS	LIMITS
------------------	---------	--------

Pee Dee Station Site WMA Florence County

- All visitors must sign in and out at kiosk.

Deer Archery	Sept. 15-Oct. 31, either-sex	Statewide WMA Limits
Deer Primitive Weapons	Nov. 1-30, buck only, except either sex on Nov. 12, 19, 26	
Small Game	Nov. 24-Mar. 1 • No fox squirrel hunting.	

Samworth WMA Georgetown County

Deer Archery (impoundments only)	Sept. 15-Oct. 10 either-sex	Statewide WMA Limits
Hog Hunts (with Dogs) (impoundments only)	Mar. 13-18 • Refer to Reg. 2.16 on page 88.	No limit

Sand Hills State Forest WMA Chesterfield County

No hunting within the boundary of the H. Cooper Black, Jr. Memorial Field Trial and Recreation Area during scheduled field trials. Inquire at H. Cooper Black Jr. Headquarters about scheduled events or call 843-378-1555.

Deer Archery	Sept. 15-Oct. 10, either-sex	Statewide WMA Limits
Deer Gun Hunts	Oct. 11-Dec. 31 buck only, except either sex on Oct. 15, Nov. 12, 19, 26, Dec. 31 • No man drives allowed.	

Small Game

- No hunting within the boundary of the H. Cooper Black, Jr. Memorial Field Trial and Recreation Area during scheduled field trials. Inquire at Forest Headquarters about scheduled events or call 843-378-1555. No quail hunting allowed on H. Cooper Black, Jr. Memorial Field Trial Area.
- Refer to WMA seasons in chart on page 66.

Santee Dam WMA Clarendon County

- Hunter access by watercraft only from Borrow Pitt Landing (Clarendon Co.) or Wilson's Landing (Berkeley Co.) except during scheduled dove hunts (see Migratory Bird Regulations)

Deer Archery	Sept. 15-Oct. 31 either-sex	Statewide WMA Limits
Deer Primitive Weapons	Nov. 1-Dec. 31, buck only, except either sex on Nov. 12, 19, 26, Dec. 31	
Hog Hunts (with Dogs)	Mar. 13-18 Refer to Reg. 2.16 on page 88.	No Limit
Dove	Dove hunts on designated days only. Season and limits published in the Public Dove Fields List pg 80-83.	
Small Game	Jan. 2 - Mar. 1 • No fox squirrel hunting.	Game Zone 4 Limits

Santee Delta WMA Georgetown County

Deer Archery	Sept. 15 - Oct. 10 either-sex	Statewide WMA Limits
Hog Hunts (with Dogs)	Mar. 13-18 Refer to Reg. 2.16 on page 88.	No limit

AREA/ METHODS	SEASONS	LIMITS
------------------	---------	--------

Waccamaw River Heritage Preserve WMA Horry County

Bear	Oct 24-Nov. 5	1 bear
-------------	---------------	--------

- Drawing only (see page 62) Horry, Georgetown, and Williamsburg counties only.

Deer Archery	Sept. 15-Oct. 10 either-sex	Statewide WMA Limits
Deer Primitive Weapons	Oct. 11-20, buck only Oct. 15, either-sex	
Deer Gun Hunts	Nov. 7-Dec. 31 buck only, except either sex on Nov. 12, 19, 26, Dec. 31	

Small Game (including raccoon and opossum)	Nov. 24-Mar. 1 • No fox squirrel hunting.	Game Zone 4 limits
--	--	--------------------

Hog Still Gun Hunts	Mar. 6-11 Refer to Reg 2.16 on page 88.	No limit
----------------------------	--	----------

Hog Hunts (with Dogs)	Mar. 13-18 Refer to Reg. 2.16 on page 88.	No limit
---------------------------------	--	----------

Wee Tee WMA Williamsburg & Georgetown Counties

Bear	Oct 24-Nov. 5	1 bear
-------------	---------------	--------

- Drawing only (see page 62) Horry, Georgetown, and Williamsburg counties only.

Deer Archery	Sept. 15-Oct. 10 either-sex	Statewide WMA Limits
Deer Gun Hunts	Oct. 11-Dec. 31 buck only, except either sex on Oct. 15, Nov. 12, 19, 26, Dec. 31	

Hog Still Gun Hunts	Mar. 6-11, Refer to Reg. 2.16 on page 88.	No Limit
----------------------------	---	----------

Hog Hunts (with Dogs)	Mar. 13-18 • Refer to Reg. 2.16 on page 88.	No Limit
---------------------------------	--	----------

Raccoon and Opossum	Refer to WMA seasons in chart on page 66.	Game Zone 4 Limits
----------------------------	---	--------------------

Other Small Game	Nov. 24-Mar. 1 • No fox squirrel hunting.	Game Zone 4 limits
-------------------------	--	--------------------

Woodbury WMA Marion County

- Quality Deer Management Area
- Antlered deer must have at least 4 points on 1 side or a minimum 12-inch antler spread.
- All visitors must sign in and out at the kiosk.
- No ATV's allowed.

Deer Archery	Sept 15-Oct. 10 either-sex	Statewide WMA Limits
Deer Primitive Weapons	Oct. 11-20, buck only Oct. 15, either-sex	

Deer Gun Hunts	Oct. 21-Dec. 31 buck only, except either sex on Nov. 12, 19, 26, Dec. 31	
-----------------------	--	--

Hog Still Gun Hunts	Mar. 6-11, Refer to Reg. 2.16 on pg. 88.	No limit
----------------------------	--	----------

Hog Hunts (with Dogs)	Mar. 20-25 May 22-27 Refer to Reg. 2.16 on pg. 88. • Handguns only	No limit
---------------------------------	---	----------

Small Game		
Raccoons & Opossums	Refer to WMA seasons in chart on page 66.	Game Zone 4 Bag Limit
Other Small Game	Nov. 24-Mar. 1 • No fox squirrel hunting	Game Zone 4 Bag Limit

SHOOTERS & HUNTERS: HELP PREVENT WILDFIRES.

The target shooting and hunting community prides itself on being safe and responsible with firearms in all situations—from using them outdoors to storing them safely at home. Sometimes, however, unusual conditions such as extremely dry environments require an extra level of awareness and safety on the part of shooters.

Wildfires have many possible causes. The National Shooting Sports Foundation, the trade association for the firearms and ammunition industry, reminds all shooters that during dry and hot weather conditions their use of certain ammunition and targets could accidentally ignite a wildfire. NSSF reminds all target shooters and hunters, as well as other outdoor enthusiasts, to consider the potential consequences of their activities in fire-prone environments.

- **Make it a point to know the regulations and rules related to shooting in areas experiencing dry and hot conditions, whether on public or private land or at shooting ranges. Many national forests, for example, do not allow recreational shooting when fire restrictions are in effect.**
- **Consider the type of ammunition and targets you are using. Minimize the risk of fires by not using steel-jacketed ammunition, ammunition with steel-core components, tracer rounds or exploding targets in fire-prone areas.**
- **Remember that equipment, such as cars and ATVs, can have extremely hot exhaust systems that could ignite dry vegetation, so park only in designated areas.**
- **Extinguish and dispose of smoking materials safely.**
- **Follow guidelines to extinguish campfires.**
- **Warn others of potential dangers and behaviors for starting wildfires.**
- **Report any wildfire you see to authorities.**
- **Spread this message to other target shooters, hunters and outdoor enthusiasts.**



NSSF.ORG



South Carolina Natural Resources & South Carolina Coastal Resources



Two brand new blogs from
the South Carolina
Department of Natural Resources



Behind-the-scenes
outdoors and conservation stories
from the Appalachians to the Atlantic

Find us at www.dnr.sc.gov

WILDLIFE MANAGEMENT REGULATIONS

Hog Hunting Seasons for WMAs and Heritage Preserves

Feral hog hunting on WMAs is permitted during any open season for game unless otherwise restricted (see specific WMAs). On WMA lands, weapons used to hunt hogs are limited to the weapons that are allowed for the current open season on each WMA. A hunting license and a WMA permit are required and hunters are required to wear a hat, coat or vest of solid international orange color while hunting. Hogs may not be transported alive. Hogs may not be hunted at night. On Special Hog Still Gun Hunts, weapons may include archery, crossbows, centerfire rifles, muzzleloading rifles, centerfire handguns and shotguns with slugs only except as specified for certain WMAs. For Special Hog Hunts with Dogs, no still or stalk hunting and only handguns permitted.



GAME ZN	AREA	COUNTY	SPECIAL STILL HUNTING	SPECIAL HUNTS WITH DOGS
1	WMAs ~ Greenville, Oconee, Pickens (portions of Greenville, Oconee, and Pickens north of Game Zone 2 line)			Jan. 2-10, Mar. 20-28
	WMAs ~ Abbeville, Anderson, Chester, Cherokee, Edgefield, Greenwood, Lancaster, Laurens, McCormick, Newberry, York, (portions of Greenville, Oconee, and Pickens south of Game Zone 1 line) except Keowee & Fants Grove WMAs			Jan. 2-10, Mar. 20-28
3	Bear Island	Colleton		Mar. 2-4
	Crackerneck	Aiken		Jan. 6 - Feb. 24 (Fri. only)
	Donnelley	Colleton		Mar. 2-4
	Francis Marion Nat. Forest—All WMAs	Berkeley	Mar. 6-11	Mar. 20-25, May 22-27
	Hamilton Ridge	Hampton		Aug. 25-27, Mar. 2-4, May 11-13
	Palachucola	Hampton, Jasper		Aug. 25-27, Mar. 2-4, May 11-13
	Santee Coastal Reserve	Charleston, Georgetown		Mar. 13-18
	Webb	Hampton		Aug. 25-27, Mar. 2-4, May 11-13
4	Yawkey	Georgetown	Periodic announced hunts	
	Great Pee Dee	Darlington	Mar. 6-11	Mar. 20-25, May 22-27
	Hickory Top	Clarendon		Mar. 13-18
	Little Pee Dee River Comp.	Marion	Mar. 6-11	Mar. 13-18
	Manchester SF	Sumter		Mar. 13-18
	Marsh	Marion	Mar. 6-11	Mar. 20-25, May 22-27
	Samworth	Georgetown		Mar. 13-18
	Santee Dam	Clarendon		Mar. 13-18
	Santee-Delta	Georgetown		Mar. 13-18
	Waccamaw River	Horry	Mar. 6-11	Mar. 13-18
	Wee Tee	Williamsburg, Georgetown	Mar. 6-11	Mar. 13-18
	Woodbury	Marion	Mar. 6-11	Mar. 20-25, May 22-27

SCDNR YOUTH AND MOBILITY IMPAIRED HUNTS

YOUTH AGE 17 & YOUNGER

DATE	LOCATION	CONTACT INFO.
TURKEY		
Mar. 18-19, 2017	Private Lands Statewide; Turkey tags required.	
Mar. 25, 2017	All WMAs normally open to turkey hunting except: Bear Island, Donnelley, Keowee, Santee Coastal Reserve, Santee Cooper, Hatchery Waterfowl Area, Bonneau Ferry, Belfast, Wateree River HP	
RACCOON		
Sept. 10	Private Lands Only	
SQUIRREL		
Sept. 24	Private Lands Only	
QUAIL		
Nov. 19	Private Lands Only	
RABBIT		
Mar. 4, 2017	Private Lands Only	
DEER		
Jan. 7, 2017	Private Lands Statewide	
Limit 2 deer total one antlerless; no tags required	All WMAs normally open to deer hunting except: Bear Island, Crackerneck, Donnelley, Draper, Fant's Grove, Keowee, McBee, Palachucola, Santee Coastal Reserve, Santee Cooper, Hatchery, Webb, Bonneau Ferry, Hamilton Ridge and Botany Bay Plantation.	

DATE	LOCATION	CONTACT INFO.
YOUTH DOVE		
Eligibility for these hunts requires adults 21 years or older to bring 1 or 2 youths 15 years of age and younger. Youths 16 & 17 years of age may participate in the hunt with or without an accompanying adult. Only the youth may shoot. No pre-registration required.		
Sept. 3	Union Co. USFS Herbert Dove Field	For information call 864-427-5140.
Sept. 3	Draper WMA York Co.	For information call 803-427-5140.
Sept. 3	Sumter Co. Manchester State Forest Bland Field 1	For information call 803-734-3898.
Sept. 3	Santee Cooper WMA Orangeburg Co.	For information call 803-734-3898.
Selected Days	Botany Bay Plantation WMA	For information call Region 4 SCDNR 843-844-8957 or 843-869-2713.
Selected Days	Bonneau Ferry WMA	For information call 843-825-3387
Sept. 3	Power of Partnerships Field Abbeville Co.	For information call 864-223-2731

Continued on page 108

Free Wild Hog Removal



We are courteous and respectful of your crops, land, and wildlife. Day hunts or night hunts by any means you desire. Grab and stab, shoot, bow, or dogs. We abide by SC DNR Rules and Regs. We keep what we kill.



Apex Hog Removal, LLC
Cell: 843-696-7022
Dr. Matthew Jenkins

PA-KO
PLANTATION
 MIDWAY, ALABAMA
 Est. 1954



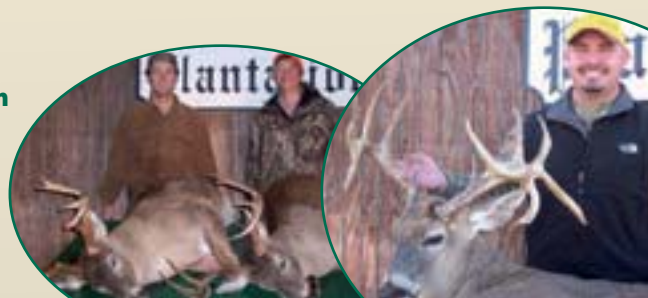
December 27th, 2012

Hunt prime land in Barbour & Bullock Counties.

- Highest deer density in Alabama. Hogs, coyotes and bobcats (no charge, no limit with paid deer hunt)
- 6,000 acre family-owned plantation. NO LEASED LAND.
- 50 Food Plots with elevated shooting houses surrounded by pines and oak bottoms.
- New cottages with private bedrooms and baths. First class lodge. All meals included.

Visit us at
www.pa-ko.com

To plan your hunt,
 call J. Paul Taylor at
877.539.5699



SCDNR YOUTH AND MOBILITY IMPAIRED HUNTS (CONT.)

YOUTH AGE 17 & YOUNGER (CONTINUED)

DATE	LOCATION	CONTACT INFO.
YOUTH ONLY DEER LOTTERY HUNT		
Selected Day in November	Poinsett Gunnery Range Sumter Co.	Applications available in Sept. Region 3 SCDNR 803-734-3898 or download application from SCDNR website.
Selected Days: Oct.-Dec.	Upstate Private Areas (Cherokee, Laurens, Spartanburg, Union Counties)	Region I SCDNR 864-427-5140. Call for application or download application from SCDNR website. Application due by Sept. 12.
Oct. 1	Fants Grove WMA	Applications available in early Aug. Call Clemson office at 864-654-1671 ext. 19 or download application from SCDNR website.
Selected Days: Oct.-Nov.	Belfast WMA	Applications available Aug. 20 through Sept. 20. Call SCDNR office 803-734-3898 or download application from SCDNR website.
Selected Days Oct.-Dec.	Moultrie Hunt Unit	Applications available late Aug. Call Dennis Wildlife Center at 843-825-3387 or 843-761-8820.
Selected Days	Tibwin (Francis Marion Hunt Unit)	Applications available early Sept. Call US Forest Service at 843-336-3248.
Selected Days: Oct.-Dec.	Congaree Bluffs HP	Applications available Aug. 20 through Sept. 20. Call SCDNR office 803-734-3898 or download application from SCDNR website.
Selected Days: Oct.-Nov.	Manchester State Forest	Applications available Aug. 20 through Sept. 20. Call SCDNR office 803-734-3898 or download application from SCDNR website.
ADULT/YOUTH DEER, TURKEY, SMALL GAME		
See page 99	Bluefield WMA	Bluefield WMA is open only to youth 17 and younger who must be accompanied by an adult 21 years of age or older. Adult may hunt also. See page 99 for restrictions, dates and limits. For more information, call Dennis Wildlife Center at 843-825-3387.
ADULT/YOUTH DEER, SMALL GAME		
See page 97	Bonneau Ferry Area A	See page 97 for restrictions, dates. For information, call Dennis Wildlife Center 843-825-3387.
YOUTH ONLY RACCOON		
Oct.	Darlington Co.	Contact Columbia SCDNR office for information at 803-734-3609.
Nov.	Edgefield Co.	Contact Columbia SCDNR office for information at 803-734-3609.
Nov.	Union Co.	Contact Columbia SCDNR office for information at 803-734-3609.

DATE	LOCATION	CONTACT INFO.
Nov.	Georgetown Co.	Contact Columbia SCDNR office for information at 803-734-3609.
Jan. 2017	Orangeburg Co.	For applications call Region 3 SCDNR 803-734-3898. Applications due before the first Saturday in Jan.
Jan. 2017	Colleton Co.	Contact Columbia SCDNR office for information at 803-734-3609.
SOUTH CAROLINA YOUTH RACCOON HUNTING CHAMPIONSHIP		
Feb. or Mar. 2017	Webb WMA	Participants are selected by regional Qualifying hunts. For more information, call the Furbearer Project at 803-734-3609 or Webb WMA at 803-625-3569.
DRAW YOUTH TURKEY		
Saturdays during WMA season	Santee Cooper, Donnelley, Bonneau Ferry, Belfast	WMA Turkey applications available in late Feb. Call Columbia office at 803-734-3886. Applications due in Mar.
DRAW YOUTH WATERFOWL		
Sat. during season	Donnelley, Bonneau Ferry WMA, & Clemson WMA	Applications available in Oct. Call Columbia office at 803-734-3609.

SPECIAL SCDNR HUNTS MOBILITY IMPAIRED

DATE	LOCATION	SPONSOR/CONTACT INFO.
Most WMAs are located in remote areas without developed access. For questions concerning access conditions for specific properties and assistance contact SCDNR regional offices page 6.		
DEER		
Selected dates	Tibwin, Charleston Co.	US Forest Service & SCDNR. Call USFS 843-336-3248.
Oct. 28-29 Fri.-PM/Sat.-AM	Upstate Private Areas Cherokee, Spartanburg & Union counties	Private Landowners & SCDNR Region 1, 864-427-5140
Nov. 4-5 Fri.-PM/Sat.-AM	Upstate Private Areas Laurens, Newberry, counties	Private Landowners & SCDNR Region 1, 864-427-5140
NOTE: Eligibility requirements for mobility impaired deer hunts at these locations are as follows: Persons permanently confined to a wheelchair, persons permanently requiring the use of mechanical aids (crutches, walkers, and etc.) to walk or persons with complete single or double leg amputations.		