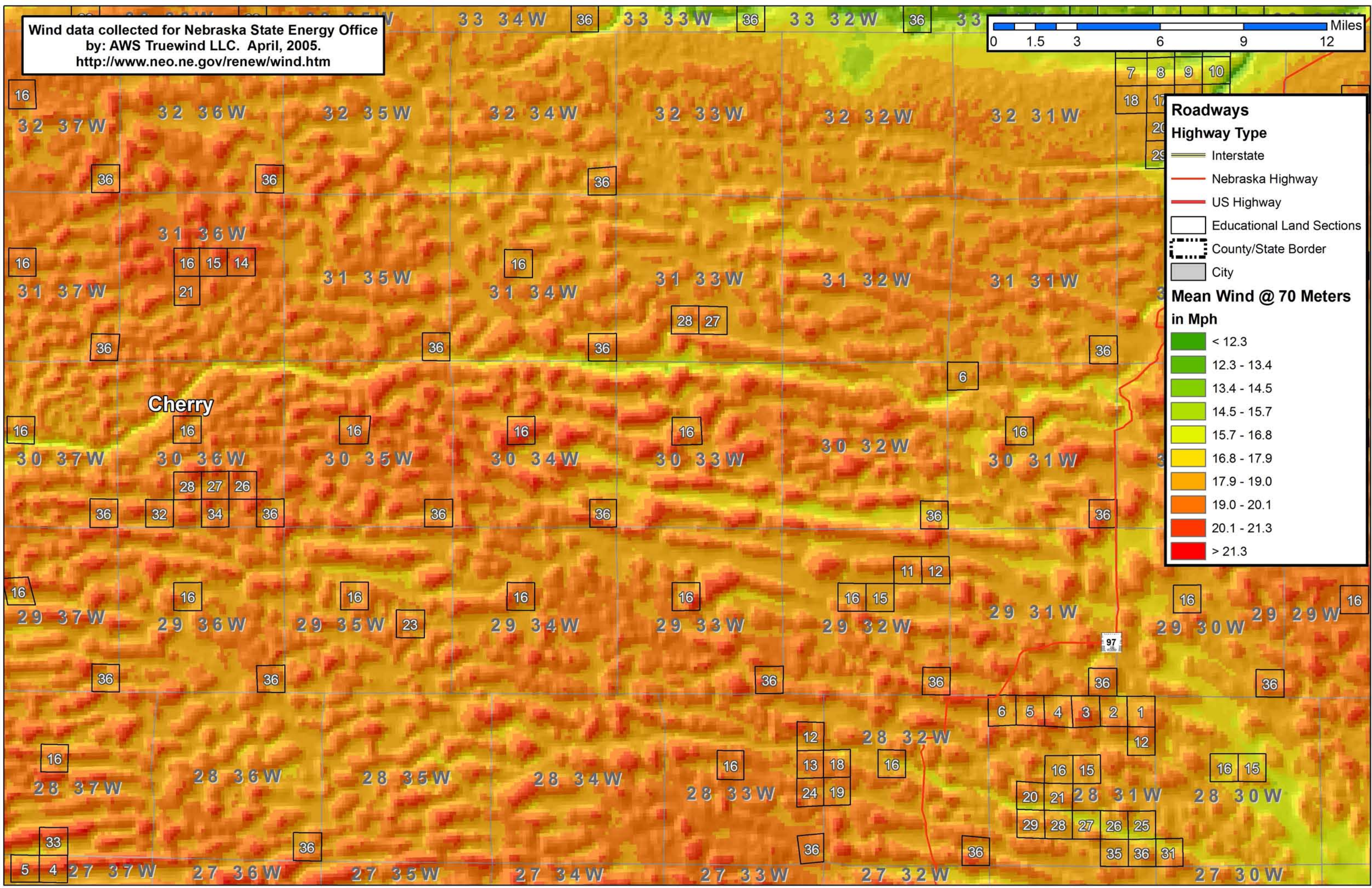
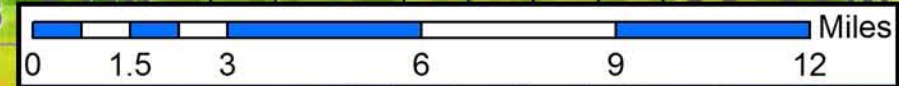


Wind data collected for Nebraska State Energy Office
by: AWS Truewind LLC. April, 2005.
<http://www.neo.ne.gov/renew/wind.htm>



Roadways

Highway Type

- Interstate
- Nebraska Highway
- US Highway

Educational Land Sections

County/State Border

City

Mean Wind @ 70 Meters in Mph

- < 12.3
- 12.3 - 13.4
- 13.4 - 14.5
- 14.5 - 15.7
- 15.7 - 16.8
- 16.8 - 17.9
- 17.9 - 19.0
- 19.0 - 20.1
- 20.1 - 21.3
- > 21.3

Cherry

7 8 9 10
18 17
20
29

6 5 4 3 2 1

16 15
20 21 28 31W 28 30W
29 28 27 26 25
35 36 31

12
13 18
24 19

28 32W

5 4 27 37W 27 36W

27 35W

27 34W

27 33W

27 32W

27 31W

27 30W

16
29 37W

16
29 36W

16
29 35W

16
29 34W

16
29 33W

16
29 32W

16 15
29 31W

16
29 30W

16
29 29W

16

16
30 37W

16
30 36W

16
30 35W

16
30 34W

16
30 33W

16
30 32W

16
30 31W

16
31 37W

16 15 14
21

31 35W

16
31 34W

28 27

31 33W

31 32W

31 31W

16
32 37W

32 36W

32 35W

32 34W

32 33W

32 32W

32 31W

36

36

36

36

36

36

36

36

36

36

36

36

36

36

36

36

36

36

36

36

6

36

36

32

34

36

36

36

36

36

36

36

36

36

36

36

36

16

16

16

16

16

16

16

15

33

36

36

36

35

36

31