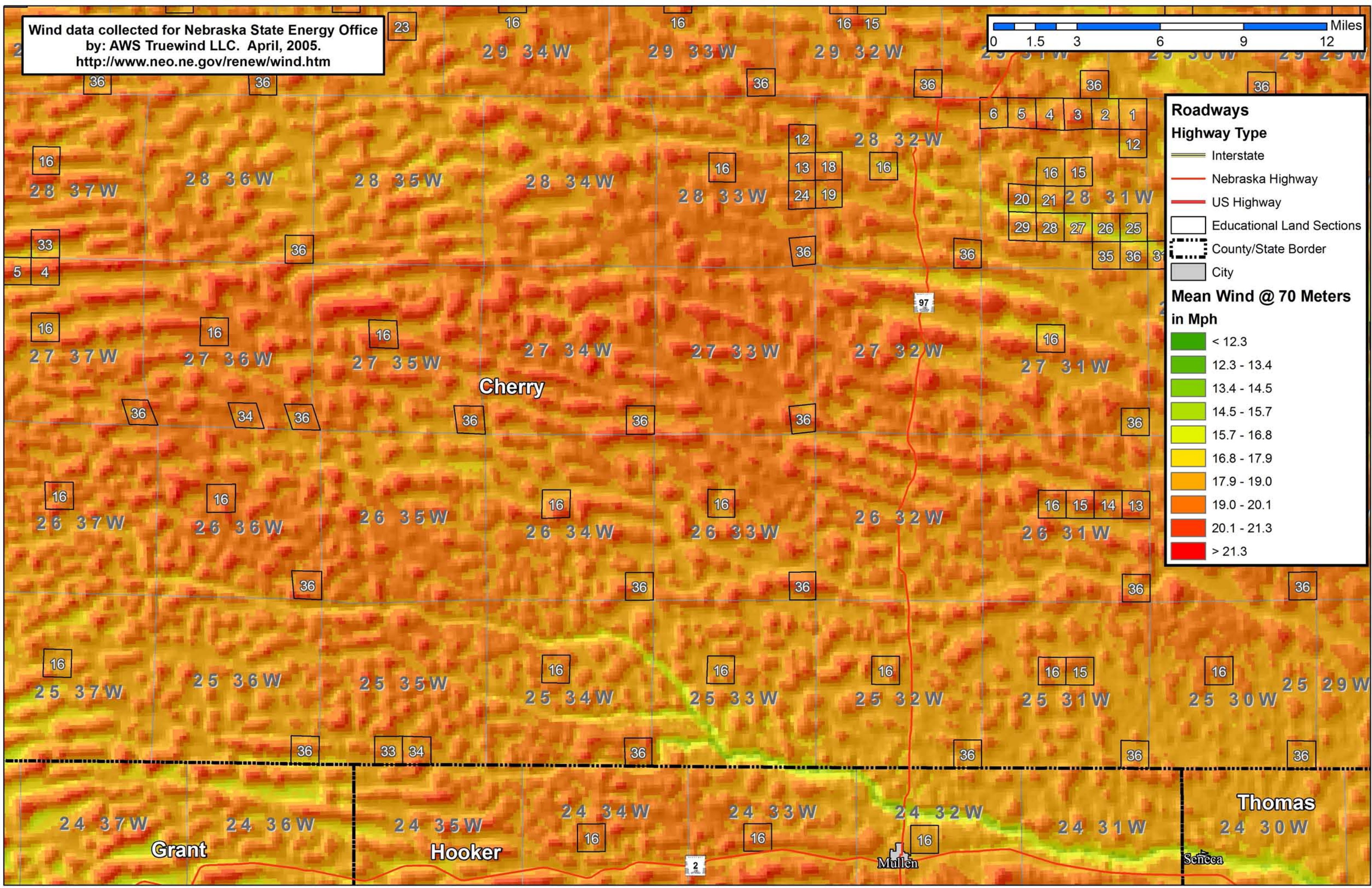


Wind data collected for Nebraska State Energy Office  
by: AWS Truewind LLC. April, 2005.  
<http://www.neo.ne.gov/renew/wind.htm>



**Roadways**  
**Highway Type**

- Interstate
- Nebraska Highway
- US Highway

Educational Land Sections  
County/State Border  
City

**Mean Wind @ 70 Meters in Mph**

< 12.3
12.3 - 13.4
13.4 - 14.5
14.5 - 15.7
15.7 - 16.8
16.8 - 17.9
17.9 - 19.0
19.0 - 20.1
20.1 - 21.3
> 21.3

Cherry

Grant

Hooker

Thomas

Mullen

Seneca