



Bureau of Land Management

Utah
News

GREEN RIVER DISTRICT OFFICE
170 SOUTH 500 EAST . VERNAL, UT 84078
PHONE (435) 781-4400 . FAX (435) 781-4410
[HTTP://WWW.BLM.GOV/UT/ST/EN.HTML](http://www.blm.gov/ut/st/en.html)

Contact: Kelsey Birchell 435-781-2746

Tom Patterson Prescribed Fire

The Bureau of Land Management (BLM) Vernal Field Office (VFO) is planning on implementing the Tom Patterson Prescribed Fire in Uintah County during September of 2016. The project is located in the southern part of Uintah County within the Bookcliffs along the McCook Ridge Road.

The Tom Patterson Project is a multi-year treatment designed to remove encroaching Juniper and Pinyon Pine species in order to promote grass and brush habitat thus promoting habitat for wildlife. The prescribed fire burn area is approximately 26,000 acres with 10,000 acres targeted for burning in a mosaic fire pattern.

During the fall of 2016 the BLM plans to create a fire black line along the McCook Ridge Road. This black line will consume vegetation approximately 100 to 1000 feet directly west off of the McCook Ridge Road. This road is the central holding line for the project and will aid in holding east fire spread for the remainder of the years the project is implemented. The McCook Ridge Road will be closed where active ignition is occurring. Prescribed Fire Smoke Signs and Road Closed Signs will be placed along the McCook Ridge Road in the prescribed fire vicinity. If you have any questions please contact Kelsey Birchell 435-790-2515.

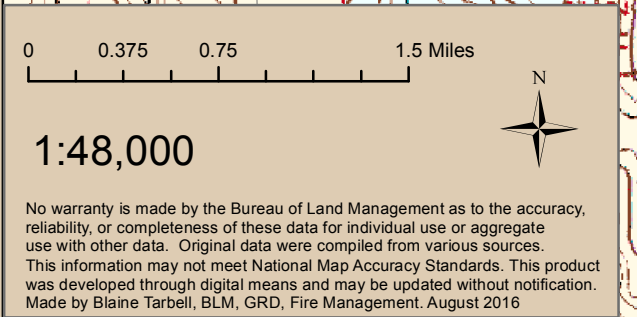
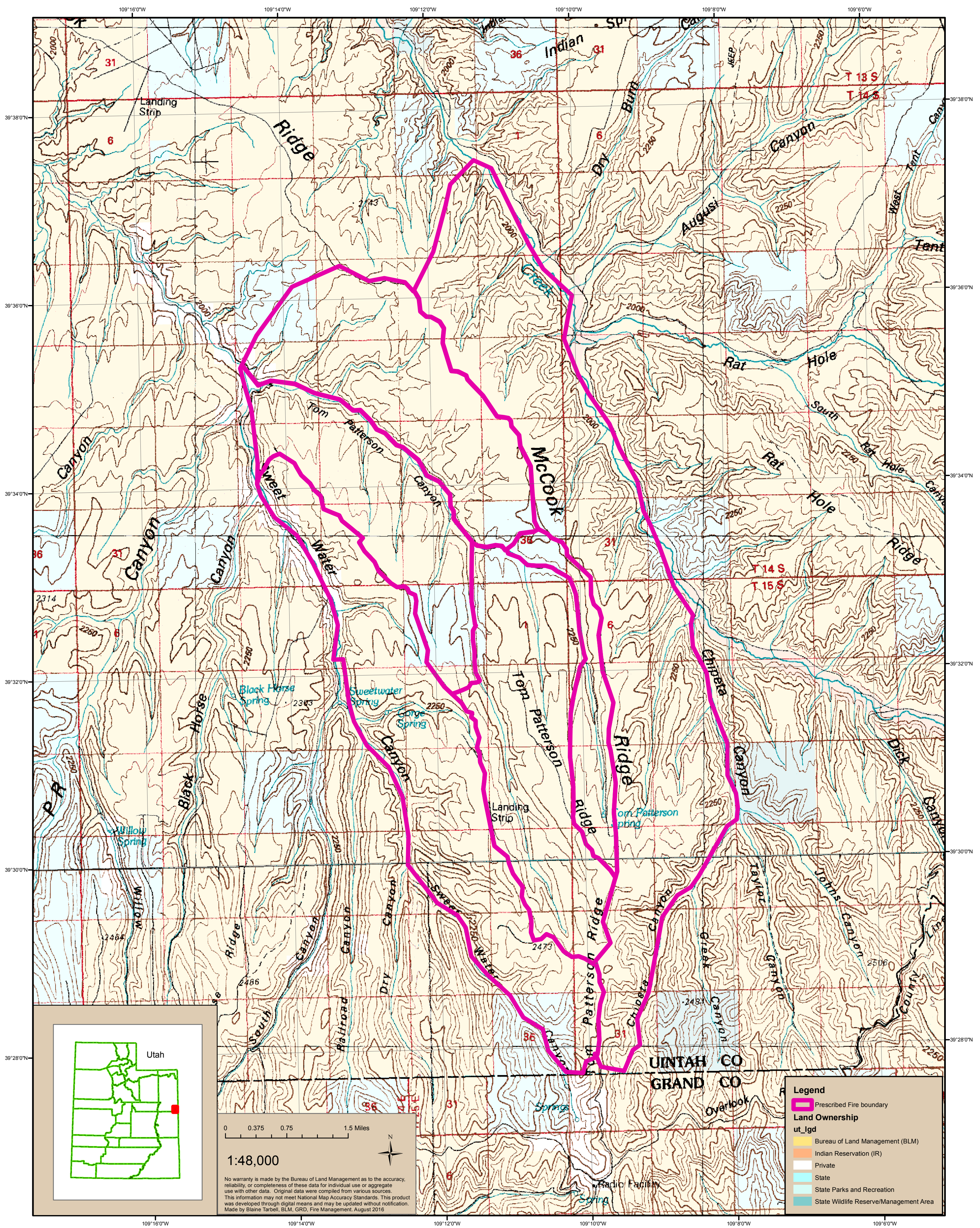
- BLM -

Follow us on Twitter [@BLMUtah](https://twitter.com/BLMUtah)

The BLM manages more than 245 million acres of public land, the most of any Federal agency. This land, known as the National System of Public Lands, is primarily located in 12 Western states, including Alaska. The BLM also administers 700 million acres of sub-surface mineral estate throughout the nation. The BLM's mission is to manage and conserve the public lands for the use and enjoyment of present and future generations under our mandate of multiple-use and sustained yield. In Fiscal Year 2013, the BLM generated \$4.7 billion in receipts from public lands.



Tom Patterson Prescribed Fire Project



No warranty is made by the Bureau of Land Management as to the accuracy, reliability, or completeness of these data for individual use or aggregate use with other data. Original data were compiled from various sources. This information may not meet National Map Accuracy Standards. This product was developed through digital means and may be updated without notification. Made by Blaine Tarbell, BLM, GRD, Fire Management, August 2016

Legend

- Prescribed Fire boundary

Land Ownership

- Bureau of Land Management (BLM)
- Indian Reservation (IR)
- Private
- State
- State Parks and Recreation
- State Wildlife Reserve/Management Area