

## **KAUAI DERELICT NET REPORT**

### **DERELICT NET SHORLINE/NEARSHORE SURVEY:**

Date of Aerial Survey: 9 October 2001

#### **SURVEY AREA:**

In support of the derelict Net Removal Project (the "Project") on Kauai, a preliminary derelict net survey was conducted on 20 September 2001. The derelict net survey area included the adjacent shoreline on Kauai out to a ten-meter depth from Kilauea Point to Makahuena Point (on the eastern shore) and from Makaha Point to Mana Point (on the western shore) – the "Work Area". The results of that preliminary survey were documented in the spreadsheet "Kauai Net Removal Project – Preliminary Shoreline/Nearshore Survey".

The results of the preliminary net survey were discussed in planning meetings on 28 September and 3 October 2001. Due to the minimum number of derelict nets observed on the west shore of Kauai in the preliminary survey, the Trustees elected to limit the survey area for subsequent aerial surveys to the eastern shoreline of Kauai; that portion from Makahuena Point to the south boundary of the Kilauea Wildlife Refuge at Kilauea Point.

Phase 1 of the project, a planning and community outreach initiative, began on 1 September and ended on 30 September. Phase 2 of the Project commenced with an aerial derelict net survey conducted on 9 October 2001.

#### **SURVEY TEAM (FIRST FLIGHT):**

Don Heacock, State of Hawaii, Department of Land and Natural Resources  
Elizabeth Galvez, State of Hawaii, Department of Health, HEER Branch  
Kim Beasley, General Manager, Clean Islands Council  
Mike Latham, Oil Spill Prevention Administrator, Tesoro Hawaii Corporation  
Dave Hoffman, Manager, Environmental Affairs, Tesoro Hawaii Corporation  
Rod Stone, Pilot, Sandstone Helicopters

#### **SURVEY TEAM (SECOND FLIGHT):**

Don Heacock, State of Hawaii, Department of Land and Natural Resources  
Kim Beasley, General Manager, Clean Islands Council  
Dave Carter, Group Supervisor, Clean Islands Council  
Stanley Souza, Shoreside Net Team, Pacific Environmental  
Randy Cates, Group Supervisor, Safety Boats Hawaii  
Rod Stone, Pilot, Sandstone Helicopters

## **KAUAI DERELICT NET REPORT**

Page 2

### **EQUIPMENT:**

Sandstone Helicopters in Honolulu provided the helicopter used for the survey flights. The helicopter was a seven passenger, turbine powered Bell 407, with global positioning system (GPS) instrumentation installed. Fixed video recording equipment also was installed for this survey. The video equipment was controlled by a dedicated video operator, and had zoom capabilities. The videotapes resulting from the survey flights will be provided to Clean Islands Council, for further distribution.

### **WEATHER:**

The weather during both survey flights (approximately 0945 to 1300) was mostly sunny, ceiling at 5,000 feet, with visibility in excess of 5 miles; winds were out of the northeast (moderate trades) at 10 – 15 mph; temperatures were in the mid- to upper-80s.

Water visibilities in protected locations of the designated east shore work area adjacent to the Kauai shoreline were generally good. However, moderate surf along the unprotected portions of the eastern shore obscured the bottom in many areas.

### **SURVEY FLIGHTS:**

Two survey flights were conducted on 9 October 2001. The objective of the first flight was to validate the survey information obtained during the preliminary overflight of 20 September and to locate additional nets. The objective of the second flight was to determine accessibility to the nets observed during the first flight of the day.

Both flights originated at Lihue International Airport (LIH - 21 ° 58.89' N, 159 ° 20.52' W), Lihue, Kauai County, Hawaii 96766. The first flight lifted off at 0945 (all times are approximate) and returned at 1125, and the second flight took off at 1200 and returned at 1300. The shoreline observations were carried out at a target altitude of 100 feet.

### **SURVEY FLIGHT 1:**

The first survey flight departed Lihue airport at 0945 and proceeded in a generally northerly direction, covering the eastern shoreline of Kauai. The flight traversed Ahukini State Park, Kawailoa, Nukolii Beach, Wailua Golf Course, Lydgate Park, Wailua, Waipouli, Kapaa, Kealia Beach, Paliku Point, Ahihi Point, Kahala Point, Papaa Bay, Moloaa Bay, Pakala Point, Keilua Point, Mokolea Point and arrived at the southern edge of the Kilauea National Wildlife Refuge at 1048.

Upon arrival at the Kilauea National Wildlife Refuge (the northern terminus of the east shore work area), the survey flight reversed course and retraced the outbound route, moving south.

## **KAUAI DERELICT NET REPORT**

Page 3

When the survey helicopter had returned to its starting point at Lihue Airport, the survey continued in a southerly direction. Moving southerly, the flight traversed Opoi, Ninini Point (Nawiliwili Harbor Light), Nawiliwili Harbor and the jetties. At this time (1121), the helicopter was in a low fuel state and needed to return to Lihue Airport to refuel. After discussion with the Trustees and in recognition of the large amount of net already observed and identified on the flight, the Survey Team concluded the net survey at the south end of Nawiliwili Harbor and did not proceed to Makahuena Point. The helicopter returned to the airport and landed at 1125.

The results of the aerial survey are documented in the spreadsheet "Kauai Net Removal Project - Shoreline/Nearshore Survey".

### **SURVEY FLIGHT 2:**

After being refueled at the Lihue Airport, the second Survey Team departed the Lihue Airport at 1200. This survey flight retraced the flight path of the first survey flight. As noted above, the objective of this second survey flight was to identify access points and methods for reaching the positions of the derelict nets observed during the first flight. The Survey Team concluded the flight at 1300.

### **GENERAL OBSERVATIONS:**

The preliminary survey of 20 September had unofficially logged approximately 173 net fragments of various sizes from very small (basketball size and smaller) to large (perhaps 4 ft. by 4 ft. by 6 ft.) The unofficial net count for the survey flight of 9 October was approximately 202. Again, the nets on the east shoreline were distributed randomly throughout the work area, but they also were bunched in certain areas. Heavier concentrations of nets were observed in the vicinity of the Beach Boy Hotel, the northern end of Kealia Beach and north for approximately 200 meters, the northern area of "Donkey Beach" (south of Ahihi Point), the shoreline from Ahihi Point north to Kahala Point, and the shoreline from Papaa Bay north to Moloaa Bay. There was also a concentration of nets from Hanamaulu Bay south to Ninini Point.

### **NEAR SHORE:**

Good aerial viewing conditions in the near shore environment out to the 10-meter depth were sporadic due to moderate surf and breaking waves. However, when good water viewing conditions were present, no derelict nets were observed in the near shore environment.

Prepared by: Mike Latham  
Oil Spill Prevention Administrator  
Tesoro Hawaii Corporation

Date: 9 October 2001

**KAUAI NET REMOVAL PROJECT  
SHORELINE/NEARSHORE SURVEY**

<b>EAST SHORE WORK AREA</b>									
Line Item	Time	Location	GPS Position		Comments				
			Latitude	Longitude					
1	0945	Lihue Airport	21° 58.89' N	159° 20.52' W	Lift off from Lihue Airport				
2	0946				Hanamaulu Bay				
3	0948	Lihue Airport			Return to airport for camera adjustment				
4	0951	Lihue Airport			Lift off from Lihue Airport, commence net survey/.				
5	0954	Radisson Hotel	22° 00.66' N	159° 20.17' W	Small net cluster just prior to hotel and golf course. Sandy shoreline, good access.				
6	0955	Radisson Hotel	22° 00.70' N	159° 20.19' W	Net on jetty				
7	0956	Waiiua Golf Course	22° 01.43' N	159° 20.30' W	Net off driving range				
8	0956	Waiiua Golf Course	22° 01.48' N	159° 20.31' W	Net off driving range				
9	0957	North of Waiiua Golf Course	22° 01.58' N	159° 20.30' W					
10	0957	North of Waiiua Golf Course	22° 01.59' N	159° 20.28' W					
11	0958	North end of Waiiua Golf Course	22° 01.89' N	159° 20.23' W	Big net cluster north end of golf course				
12	0959	Next to Lydgate State Park	22° 02.22' N	159° 20.11' W					
13	1000	Lydgate State Park			Net on Lydgate State Park breakwater				
14	1001	Beech Boy Hotel	22° 03.21' N	159° 19.91' W	Large net cluster in front of hotel. Sandy shoreline, good access.				
15	1002	Old Sheraton Hotel			Seal on the beach				
16	1002	Adjacent to Bullished Restaurant	22° 03.25' N	159° 19.93' W	Large bundle of net.				
17	1002	North of Matsuda store	22° 03.75' N	159° 19.07' W	Small net in area.				
18	1003	Adjacent to housing near Taco Bell	22° 03.84' N	159° 19.07' W	Large net on beach (100 yds. south of Fuji Beach)				
19	1005	Kapaa Canal	22° 04.27' N	159° 18.98' W	Small net on north side of jetty				

**KAUAI NET REMOVAL PROJECT  
SHORELINE/NEARSHORE SURVEY**

<b>EAST SHORE WORK AREA</b>							
Line Item	Time	Location	GPS Position		Comments		
			Latitude	Longitude			
20	1007	Kapaa Community Swimming Pool	22° 04.86 N	159° 18.71' W	Net in dirt, 150 yds. North of swimming pool, very small net		
21	1007	Mahaloana Hospital	22° 05.04 N	159° 18.59' W	Small net cluster		
22	1008		22° 05.15 N	159° 18.50' W	Small net cluster, monk seal pup		
23	1010	Scenic lookout at Kealia Beach	22° 05.27 N	159° 18.41' W	Good access to area from cane haul road, large net cluster.		
24	1011	Just further north from scenic lookout at Kealia Beach	22° 05.45 N	159° 18.35' W	Clump of small nets in sand		
25	1013	Old pier at Kealia Beach	22° 05.96 N	159° 18.11' W	Small cluster of net		
26	1013	North of old pier at Kealia Beach	22° 05.99 N	159° 18.11' W			
27	1013	North of Kealia Beach	22° 06.03 N	159° 18.07' W	Large net in surf line.		
28	1014	North of Kealia Beach	22° 06.07 N	159° 18.01' W	Large concentration of net clusters.		
29	1015	North of Kealia Beach	22° 06.10 N	159° 17.97' W	Large concentration of net clusters.		
30	1016	Further north from north end of Kealia Beach	22° 06.41 N	159° 17.78' W	Net in rocks		
31	1016		22° 06.44 N	159° 17.76' W	Net in rocks		
32	1016		22° 06.45 N	159° 17.75' W	Net in rocks @ Kealia Makai		
33	1017		22° 06.72 N	159° 17.69' W	Net in rocks		
34	1017	North end of Donkey Beach	22° 06.98 N	159° 17.71' W	Large concentration of net clusters.		
35	1018	"The Crack"	22° 07.27 N	159° 17.73' W	Net in rocks at edge of beach.		
36	1019	North of "The Crack"	22° 07.33 N	159° 17.70' W	Net cluster.		
37	1020		22° 07.38 N	159° 17.58' W	Large net in the rocks.		
38	1021	Between Anapalau Point and Pohakuloa Point	22° 07.45 N	159° 17.59' W	Large net, with white float, on shoreline.		

Date of Survey. 9 October 2001

**KAUAI NET REMOVAL PROJECT  
SHORELINE/NEARSHORE SURVEY**

<b>EAST SHORE WORK AREA</b>									
Line Item	Time	Location	GPS Position		Comments				
			Latitude	Longitude					
39	1022	Vicinity of Pohakuloa Point	22° 07.59' N	159° 17.55' W	Large net remnant on beach.				
40	1022		22° 07.79' N	159° 17.57' W	Cluster of nets at Kumukumu area.				
41	1023		22° 08.14' N	159° 17.62' W	Some net clusters. Rocky shoreline, very difficult access.				
42	1025		22° 08.25' N	159° 17.61' W	1/4 mile south of Kahala Point - Hawaiian Home Lands				
43	1026	Vicinity of Lae Lipoa	22° 08.40' N	159° 17.57' W	Small monk basking on beach, helicopter gained altitude.				
44	1026		22° 08.59' N	159° 17.59' W	Very large net in rocks.				
45	1027	South of Kohala Point	22° 08.68' N	159° 17.63' W	Several large nets.				
46	1028	Kahala Point	22° 08.72' N	159° 17.64' W	Big net at north end of Kahala Point.				
47	1029	Kahala Point	22° 08.83' N	159° 17.69' W					
48	1030	South end of Anahola Bay	22° 08.85' N	159° 17.88' W	Large net in the rocks.				
49	1031	South end of Aliamanu Road	22° 09.45' N	159° 18.26' W					
50	1031	North of Aliamanu Road	22° 09.88' N	159° 18.50' W	Small blue net.				
51	1033		22° 09.98' N	159° 18.48' W	Small net cluster on beach.				
52	1034	1/4 mile south of Papa'a Bay	22° 10.20' N	159° 18.60' W	Nets buried under the sand in this area.				
53	1035	General area of Papaa Bay	22° 10.29' N	159° 18.65' W	Scattered net remnants along the shoreline in this area.				
54	1036	North of Papa'a Bay	22° 10.54' N	159° 18.74' W	4 net cluster - 200 yds. North				
55	1036	North of Papa'a Bay	22° 10.61' N	159° 18.72' W	Road access, with bluff.				

Date of Survey: 9 October 2001

**KAUAI NET REMOVAL PROJECT  
SHORELINE/NEARSHORE SURVEY**

<b>EAST SHORE WORK AREA</b>						
Line Item	Time	Location	GPS Position		Comments	
			Latitude	Longitude		
56	1037	South of Moloa'a Bay	22° 10.75' N	159° 18.61' W	Large net at base of cliff. Many scattered net remnants between Pila'a and Moloa'a Bays. Very poor and limited access to shoreline, steep cliff and rocky outcroppings, rocky shoreline. Net in surf zone.	
57	1038		22° 11.08' N	159° 18.79' W		
58	1040		22° 11.83' N	159° 19.87' W	Pctential 4 X 4 access.	
59	1040	Vicinity of Pakala	22° 12.12' N	159° 19.97' W	Large clump of net on rocky shore.	
60	1041	Pakala Point	22° 12.16' N	159° 20.06' W	Large clump of net on rocky shore below house. Pila'a Public Beach access.	
61	1043	North of Pakala Point	22° 12.53' N	159° 20.48' W	Large clump of white net on beach, sandy shoreline.	
62	1044	Vicinity of Larson's Beach	22° 12.77' N	159° 20.85' W	Medium cluster of nets.	
63	1046	North of Pfluger property.	22° 12.79' N	159° 21.96' W	Cluster of nets. Boat access?	
64	1046	North of Pfluger property.	22° 12.86' N	159° 22.08' W	Cluster of nets. Boat access?	
65	1048	South edge of Kilauea Point wildlife refuge	22° 13.08' N	159° 22.67' W	North terminus of east shore work area. Survey team reverse course and retrace route south.	
66	1105	Middle north side of Haramaulu Bay	21° 59.67' N	159° 20.20' W	4 large nets.	
67	1105	Haramaulu Bay	21° 59.69' N	159° 20.37' W		
68	1105	Middle south side of Haramaulu Bay	21° 59.50' N	159° 20.29' W	Cluster of nets.	
69	1106	Lihue Airport	21° 58.89' N	159° 20.52' W	Commence east shore survey from Lihue Airport south to Nawiliwili Harbor.	
70	1108	Lihue Airport	21° 59.16' N	159° 20.02' W	6 ret cluster on shore, end of runway 3.	
71	1109		21° 58.71' N	159° 20.01' W	3 ret cluster.	
72	1111		21° 58.35' N	159° 19.89' W	Yellow and white net in surf.	

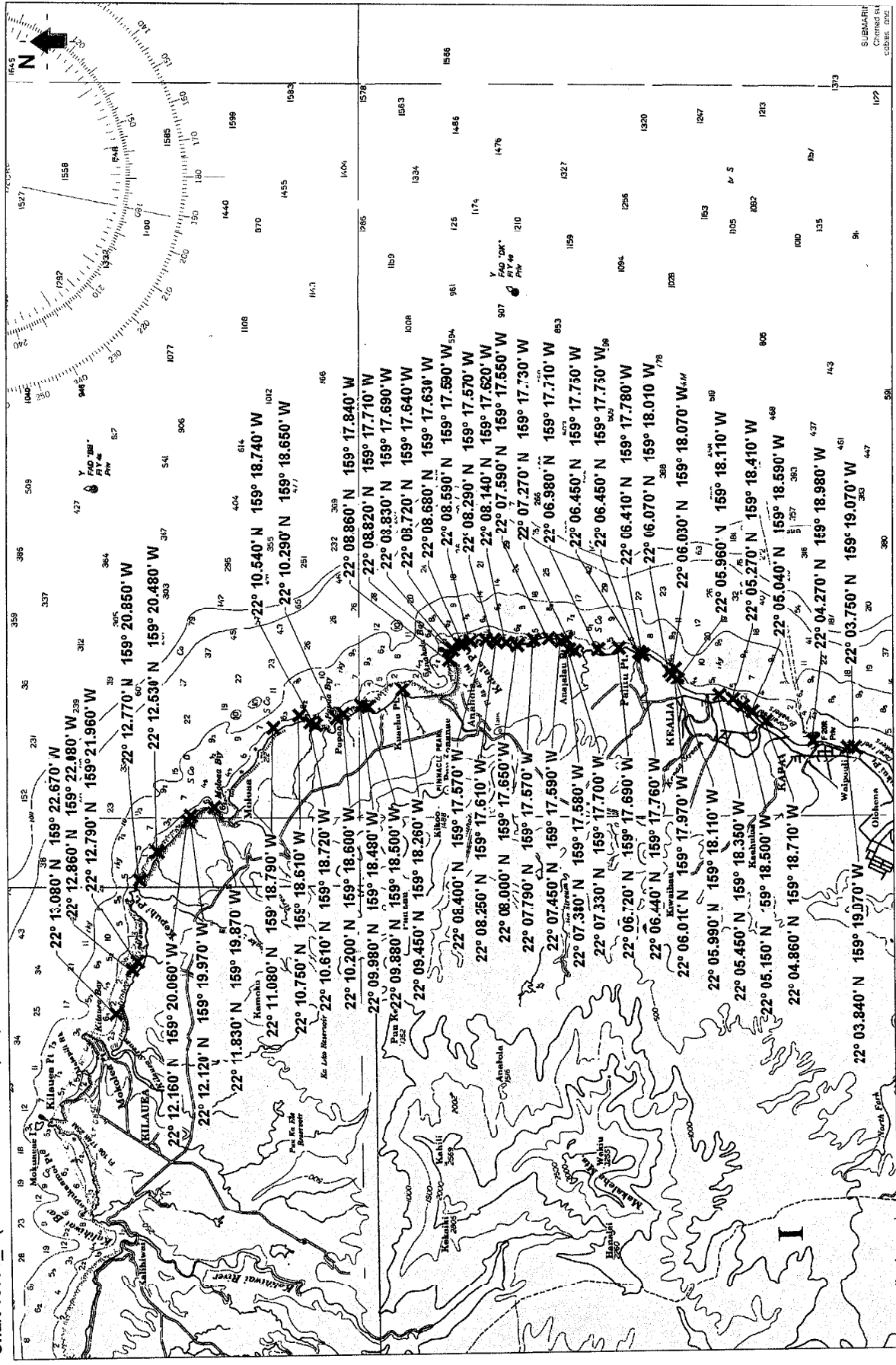
Date of Survey 9 October 2001

**KAUAI NET REMOVAL PROJECT  
SHORELINE/NEARSHORE SURVEY**

<b>EAST SHORE WORK AREA</b>						
Line Item	Time	Location	GPS Position		Comments	
			Latitude	Longitude		
73	1112		21° 58.31' N	159° 19.88' W	Net in surf.	
74	1112		21° 58.14' N	159° 19.89' W	Nets in rocks.	
75	1113		21° 58.07' N	159° 19.86' W	Large net in surf zone.	
76	1113		21° 58.02' N	159° 19.85' W	Cluster of nets.	
77	1114		21° 57.95' N	159° 19.84' W	Green net.	
78	1115		21° 57.87' N	159° 19.85' W	Large rope cluster and nets.	
79	1115		21° 57.77' N	159° 19.85' W	Large net cluster.	
80	1116		21° 57.71' N	159° 19.84' W	Large net clusters south to lighthouse.	
81	1116		21° 57.62' N	159° 19.87' W	Cluster of 3 big nets.	
82	1116		21° 57.59' N	159° 19.89' W		
83	1116		21° 57.54' N	159° 19.91' W		
84	1117		21° 57.46' N	159° 19.99' W	Large net.	
85	1119	Nini Point	21° 57.39' N	159° 20.13' W	Cluster of nets at base of lighthouse.	
86	1120	Nawiliwili Harbor breakwater	21° 56.90' N	159° 21.07' W	Corner of Nawiliwili Harbor.	
87	1120	Between Nawiliwili Harbor breakwater and Carter Point	21° 56.86' N	159° 20.92' W	Cluster of nets, large size bunches.	
88	1125	Lihue Airport	21° 58.89' N	159° 20.52' W	Return to airport. Survey concluded.	



ISLAND OF UAI  
Chart 19381\_1 (BSB Electronic Charts) Depth Units: FATHOMS AND FEET



Nautical Miles



DO NOT USE FOR NAVIGATION PURPOSES  
Printed by ChartView™ from Nautical Software (503) 579-1414



# INCIDENT ACTION PLAN

Incident Name: **Kauai Net Removal Project**



**TESORO**

Date Plan Prepared: October 9, 2001

Time: 20:00 hrs

Operational Period: Beginning  
Ending

10-Oct-01 06:00 Wednesday  
11-Oct-01 06:00 Thursday

Approvals: FOSC Representative

*John J. Knight*

SOSC Representative

*Tracy*

Responsible Party Representative

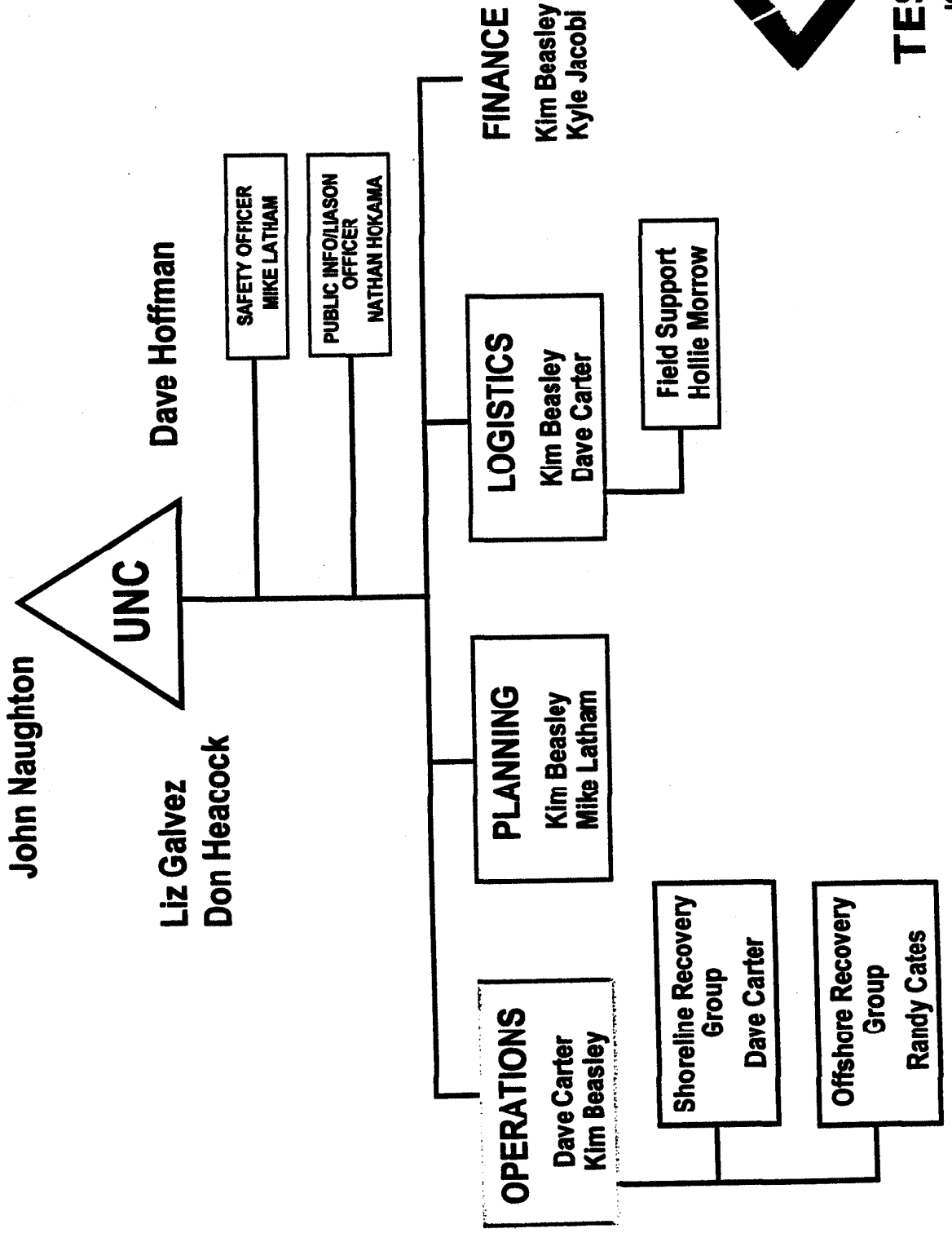
*F.D. H. [Signature]*

This Incident Action Plan represents the agreed upon work plan between the Federal and State Trustees and Tesoro, the responsible Party. The work is intended to comply with and complete the scope of work known as the Kauai Net Removal Project, and defined by the approved Consent Decree.

### Table of Contents

Cover Page	X
203 Organizational Assignments	X
204 On Water Group Assignment	X
204 Shoreline Group Assignment	X
205 Communications Plan	X
Site Safety and Health Plan	X
Waste Recovery and and Disposal Plan	X

# KAUAI NET REMOVAL PROJECT



**TESORO**

ICS 203

**FIELD ASSIGNMENTS**9-Oct-01  
20:00Incident Name: **Kauai Net Removal Project**

Originating Section: OPERATIONS

Branch:

On Water

Operational Period: beginning  
ending10-Oct-01  
11-Oct-0106:00  
06:00Wednesday  
Thursday**Safety Message:**

When cutting derelict nets and using cutting tools, be careful not to cut yourself. Using power tools usually requires wearing safety glasses. Supervisor discretion is allowed. Be careful around the surf zone as this is high risk area for slips and falls.

**Task Force: Nearshore Net Recovery Group**Supervisor:  
Dave Carter**Position****Name****Equipment****Company****Strategic Objective:** Maintain a safe working environment for all personnel.

Remove nets in accordance with the approved Waste Recovery and Disposal Plan.

**Tasks:** Work to remove derelict nets along the coast of Kauai in coordination with the Offshore Net Recovery Group

Remove derelict nets, as directed by the authorized State and Federal Trustees, along the coastline adjacent to the Lihue Airport extending between the north end of runway no. 3 and the light house located at the south end of the airport.

**Recources:****Position****Name****Equipment****Company**

Supervisor

David Carter

4 ea. 4x4 Pickup Trucks  
Group SupervisorBudget Rentals  
PENCO

3 ea. Diver/Shoreline

PENCO

1 ea. Boom Truck

Island Crane &amp; Rigging

1 ea. Box Cargo Truck

PENCO

prepared by:

Kim Beasley

Signature: \_\_\_\_\_

**FIELD ASSIGNMENTS**9-Oct-01  
20:00**Incident Name:** Kauai Net Removal Project**Originating Section:** OPERATIONS**Branch:**

On Water

**Operational Period:** beginning  
ending10-Oct-01  
11-Oct-0106:00  
6:00Wednesday  
Thursday**Safety Message:**

When cutting derelict nets and using cutting tools, be careful not to cut yourself. Using power tools usually requires wearing safety glasses. Supervisor discretion is allowed. Be careful around the surf zone as this is high risk area for slips and falls.

**Task Force:** On Water Net Recovery GroupSupervisor  
Randy Cates**Strategic Objective:** Maintain a safe working environment for all personnel.

Remove nets in accordance with the approved Waste Recovery and Disposal Plan.

**Tasks:** Remove derelict nets, as directed by the authorized State and Federal Trustees, along the shoreline area adjacent to the Lihue airport and extending between the breakwater outside of Nawiliwili Harbor to and including Hanamoulu Bay.

**Resources:**

Position	Name	Equipment	Company
Supervisor	Randy Cates	48 foot work vessel Vessel Captain 3 ea. Divers 1 ea. Jet Ski Driver/deckhand 1 ea. Jet Ski with sled.	Safety Boats Hawaii

prepared by:

Kim Beasley

Signature: \_\_\_\_\_

## Kauai Net Removal Project Comms List (ICS 205)

ICS 205

28-Sep-01

Name	Organization	Work Phone	Cellular #	Nextel ID#	Pager #	Home #	e-mail
Dave Hoffman	Tesoro	547-3230	479-0577		280-2771	521-1786	dhoffman@tesoropetroleum.com
Mike Latham	Tesoro	547-3170	479-0593	30593	N/A	385-9027	mialtham@tesoropetroleum.com
Nathan Hokama	Tesoro	547-3839	479-0544		N/A	235-2614	nhokama@tesoropetroleum.com
Dennis Saito	Tesoro	547-3279					dsaito@tesoropetroleum.com
Kim Bassley	CIC	845-8485	479-0702	702	828-8778/251-8487	735-2739	kimb@cleanislands.org
Dave Carter	CIC/Penco	845-8485	479-3905	3905	528-8778/251-8352	261-1205	davec@cleanislands.org
Stan Souza	CIC/Penco	823-8531	635-0879		644-1181		
Curtis Martin	Trustee	598-4219	228-3789		251-1042	377-1266	cmartin@sha.health.state.hi.us
Liz Galvez	Trustee	598-4219	478-1135			458-1281	egalvez@sha.health.state.hi.us
Francis Oishi	Trustee	597-0094					Frances.g.Oishi@exec.state.hi.us
Don Heacock	Trustee	808-274-1344	245-6724				econan2@aol.com
John Naughton	Trustee	973-2935 Ext. 211	497-6395			262-9029	John.Naughton@noaa.gov
Rod Stone	Sandstone Helicopter	833-5678	223-5678		280-3540	924-3206	
Stan Sekimoto	DOT/Kauai Airport Manager	808-248-1400					
	Police	808-241-3711					
Richard Sullivan	FAA	808-640-3100					
USCGC KITTAWAKE	USCG	808-248-3390					
	County Civil Defense	808-241-4336	808-241-6711 (after hrs)				
	Kauai Mayors Office	241-6300					
Robert B. Crowell	Kauai Dist Manager - DOT/Harbors	808-241-3750			808-654-3038	808-245-8857	
Nelson Keller	Pl. Allen Manager - DOT/Harbors	808-335-2121					
	Hospital	808-338-3431	24 hr number				
West Kauai Medical Center	Hospital	808-245-1100	24 hr number				
Wilcox Memorial Hospital	Helicopter/Emergency/Medical	808-335-5009			808-654-2519		
Air-1 Rescue			839-0279			821-2158	
Barry Brun	Island Crane & Rigging	823-6777	839-1021			823-8777	
Larry Conklin	FAA	245-3431					
FAA Lihue Tower							
Aston Kahua Lani (4480 Nehe Rd.)	Condo	808-822-3331					
Randy Cates	Safety Boats Hawaii	808	479-7104	11721			

# INCIDENT ACTION PLAN

Incident Name: **Kauai Net Removal Project**



Date Plan Prepared: October 10, 2001

Time: 20:00 hrs

Operational Period: Beginning  
Ending

11-Oct-01 06:00 Thursday  
12-Oct-01 06:00 Friday

Approvals: FOSC Representative

SOSC Representative

Responsible Party Representative

*[Handwritten signatures over horizontal lines]*

This Incident Action Plan represents the agreed upon work plan between the Federal and State Trustees and Tesoro, the responsible Party. The work is intended to comply with and complete the scope of work known as the Kauai Net Removal Project, and defined by the approved Consent Decree.

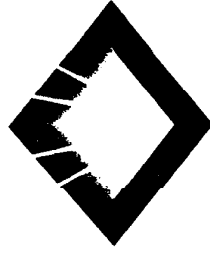
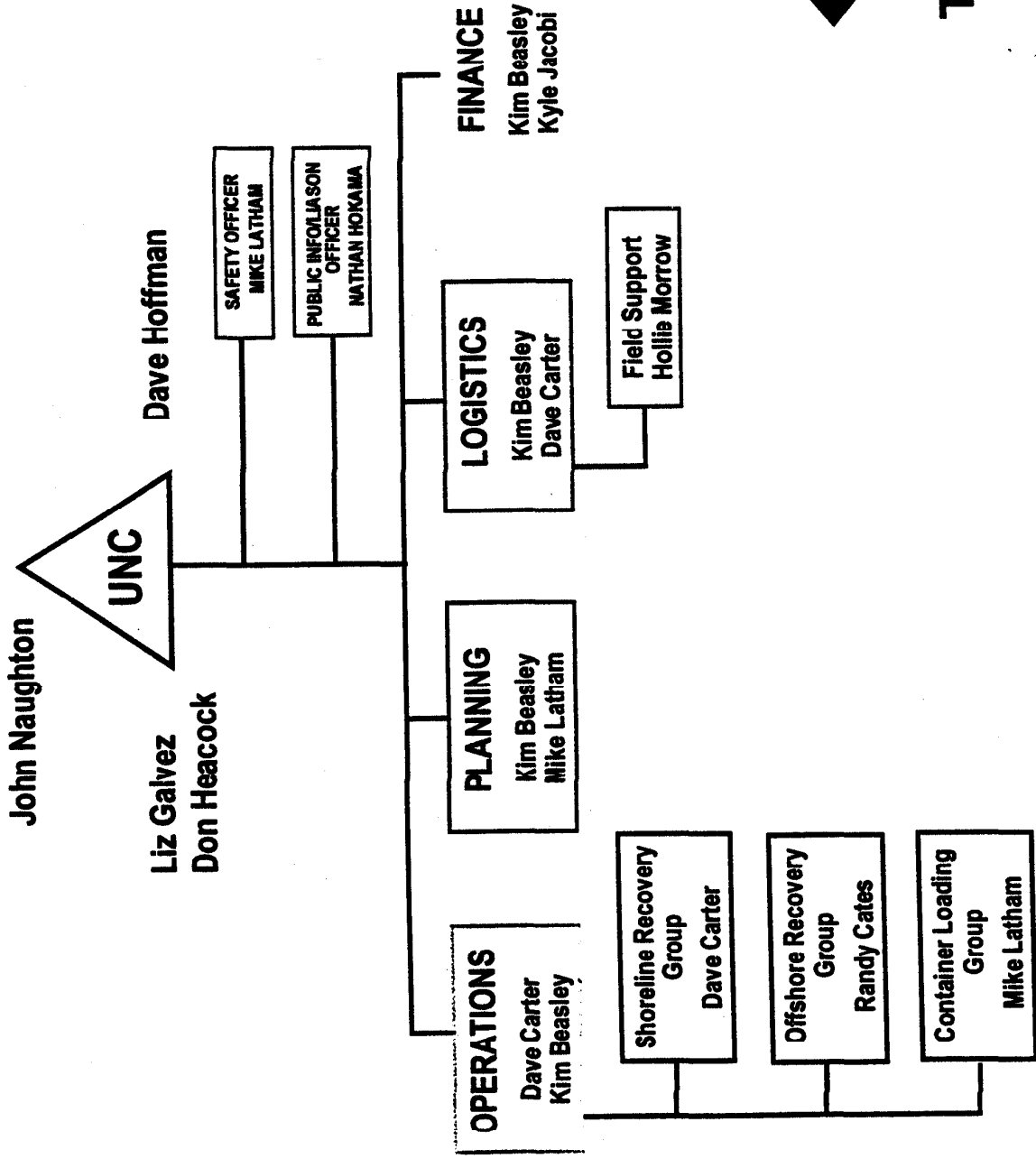
## Table of Contents

Updated?

Cover Page	X	
203 Organizational Assignments	X	
204 On Water Group Assignment	X	X
204 Shoreline Group Assignment	X	
204 Container Loading Group	X	X
205 Communications Plan	X	
Site Safety and Health Plan	X	X
Waste Recovery and and Disposal Plan	X	



# KAUAI NET REMOVAL PROJECT



**TESORO**

ICS 203

Rev. 11-Oct-01

**FIELD ASSIGNMENTS**

10-Oct-01

20:00

Incident Name: **Kauai Net Removal Project**Originating Section: **OPERATIONS**

Branch:

On Water

Operational Period: beginning  
ending11-Oct-01  
12-Oct-0106:00  
06:00Thursday  
Friday**Safety Message:**

When cutting derelict nets and using cutting tools, be careful not to cut yourself. Using power tools usually requires wearing safety glasses. Supervisor discretion is allowed. Be careful around the surf zone as this is high risk area for slips and falls. Today we are introducing a chain saw. Conduct a special safety meeting. The new Container Loading Group has special handling safety issues. Review them!

**Task Force: Shoreline Recovery Group**Supervisor  
Dave Carter**Position****Name****Equipment****Company****Strategic Objective:**

Maintain a safe working environment for all personnel.

Remove nets in accordance with the approved Waste Recovery and Disposal Plan.

**Tasks:**

Work to remove derelict nets along the coast of Kauai in coordination with the Offshore Net Recovery Group

Remove derelict nets, as directed by the authorized State and Federal Trustees. Complete the shoreline work adjacent to the Lihue airport. Move northward to a location northward to the areas difficult to reach from land. These areas are to be determined by weather and opportunity and selected by the approved Trustees.

**Resources:****Position****Name****Equipment****Company**

Supervisor

David Carter

4 ea. 4x4 Pickup Trucks  
Group Supervisor  
3 ea. Diver/Shoreline  
1 ea. Boom Truck  
1 ea. Box Cargo Truck  
1 ea. 1 Ton 4x4 P/U  
1 ea. 1/2 Ton 2x4 P/U

Budget Rentals  
PENCO  
PENCO  
Island Crane & Rigging  
PENCO  
via PENCO  
via PENCO

prepared by:

Kim Beasley

Signature: \_\_\_\_\_

**FIELD ASSIGNMENTS**10-Oct-01  
20:00Incident Name: **Kauai Net Removal Project**Originating Section: **OPERATIONS**

Branch:

**On Water**Operational Period: beginning  
ending11-Oct-01  
12-Oct-0106:00  
06:00Thursday  
Friday**Safety Message:**

When cutting derelict nets and using cutting tools, be careful not to cut yourself. Using power tools usually requires wearing safety glasses. Supervisor discretion is allowed. Be careful around the surf zone as this is high risk area for slips and falls. Today we are introducing a chain saw. Conduct a special safety meeting. The new Container Loading Group has special handling safety issues. Review them!

**Task Force: On Water Recovery Group**Supervisor  
Randy Cates**Strategic Objective:** Maintain a safe working environment for all personnel.

Remove nets in accordance with the approved Waste Recovery and Disposal Plan.

**Tasks:** Remove derelict nets, as directed by the authorized State and Federal Trustees. Complete the shoreline work adjacent to the Lihue airport. Move northward to identified locations difficult to reach from land. The general area and select areas are to be determined by weather and opportunity and selected by the assigned Trustees.

**Resources:**

Position	Name	Equipment	Company
Supervisor	Randy Cates	48 foot work vessel	Safety Boats Hawaii
		Vessel Captain	Safety Boats Hawaii
		3 ea. Divers	Safety Boats Hawaii
		1 ea. Jet Ski Driver/deckhand	
		1 ea. Jet Ski with sled.	

prepared by:

Kim Beasley

Signature: \_\_\_\_\_

**FIELD ASSIGNMENTS**10-Oct-01  
20:00Incident Name: **Kauai Net Removal Project**Originating Section: **OPERATIONS**

Branch:

**On Water**Operational Period: beginning  
ending12-Oct-01  
13-Oct-0106:00  
06:00Thursday  
Friday**Safety Message:**

When cutting derelict nets and using cutting tools, be careful not to cut yourself. Using power tools usually requires wearing safety glasses. Supervisor discretion is allowed. Be careful around the surf zone as this is high risk area for slips and falls. Today we are introducing a chain saw. Conduct a special safety meeting. The new Container Loading Group has special handling safety issues. Review them!

**Task Force: Container Loading Group**Supervisor:  
Mike Latham**Position****Name****Equipment****Company****Strategic Objective:**

Maintain a safe working environment for all personnel.

CIC

Remove nets in accordance with the approved Waste Recovery and Disposal Plan.

**Tasks:**

Receive, process and transport recovered net materials in accordance with the approved Waste Recovery and Disposal Plan.

Load the recovered materials into the Matson Container. Prepare the materials for shipment to Oahu.

**Resources:****Position****Name****Equipment**Supervisor  
AssistantMike Latham  
Kim Beasley1 ea. Forward lift telescoping fork lift  
2 ea. Personnel  
1 ea. Matson container

prepared by:

Kim Beasley

Signature: \_\_\_\_\_

# Kauai Net Removal Project Comms List (ICS 205)

ICS 205

28-Sep-01

Name	Organization	Work Phone	Cellular #	Nextel ID#	Pager #	Home #	e-mail
1 Dave Hoffman	Tesorc	547-3280	479-0577		290-2771	521-1786	dhoffman@tesoropetroleum.com
2 Mike Lathan	Tesorc	547-3179	479-0593	30593	N/A	395-6027	mlathan@tesoropetroleum.com
3 Nathan Hokama	Tesorc	547-3639	479-0544		N/A	235-2614	nhokama@tesoropetroleum.com
4 Dennis Saito	Tesorc	547-3279					dsaito@tesoropetroleum.com
5 Kim Beesley	CIC	845-8465	479-0702	702	528-6778/251-8457	735-2739	kimb@cleanislands.org
6 Dave Carter	CIC/Penco	845-8465	479-3905	3905	528-6778/251-8352	261-1205	davec@cleanislands.org
7 Stan Souza	CIC/Penco	823-6561	635-0879		644-1191		
8 Curtis Martin	Trustee	588-4249	226-3799		251-1042	377-1266	cmartin@eha.health.state.hi.us
9 Liz Galvez	Trustee	585-4249	372-2162			456-1291	egalvez@eha.health.state.hi.us
10 Francis Oishi	Trustee	587-0094					Frances_gjOishi@exec.state.hi.us
11 Don Heacock	Trustee	808-274-3344	808-639-7305		274-3448 fax		econan2@aol.com
12 John Naughton	Trustee	973-2935 Ext. 211	497-6395			262-9029	John.Naughton@noaa.gov
13 Rod Stone	Sandstone Helicopter	833-5678	223-5678		299-3540	924-3206	
14 Stan Sekimoto	DOT/Kauai Airport Manager	808-246-1400					
15	Police	808-241-6711					
16 Richard Sullivan	FAA	808-840-6100					
17 USCGC KITTIWAKE	USCG	808-246-0390					
18	County Civil Defense	808-241-6336	808-241-6711 (after hrs)				
19	Kauai Mayors Office	241-6300					
20 Robert B. Crowell	Kauai Dist. Manager - DOT/Harbor	808-241-3750			808-654-3038	808-245-6857	
21 Nelson Keiler	Pt. Allen Manager - DOT/Harbor	808-335-2121					
22 West Kauai Medical Cent	Hospital	808-338-9431	24 hr number				
23 Wilcox Memorial Hospital	Hospital	808-245-1100	24 hr number				
24 Air-1 Rescue	Helicopter/Emergency Medical	808-335-5009			808-654-2519		
26 Hollie Morrow	PENCO		635-0879				
26 Aston Kahi Lani (4460 N)	Condo	808-422-9331					
27 Randy Cates	Safety Boats Hawaii	808-479-7104	808 479-7104	11721			safetyboatshi@aol.com
28							

# INCIDENT ACTION PLAN

Incident Name: **Kauai Net Removal Project**



**TESORO**

Date Plan Prepared: October 11, 2001

Time: 20:00 hrs

Operational Period: Beginning  
Ending

12-Oct-01  
13-Oct-01

06:00 Friday  
06:00 Saturday

Approvals: FOSC Representative

SOSC Representative

Responsible Party Representative

*John Naughton* 9/22  
*Michael W. Fathman* 10/12/01  
*Michael W. Fathman* 10/12/01

This Incident Action Plan represents the agreed upon work plan between the Federal and State Trustees and Tesoro, the responsible Party. The work is intended to comply with and complete the scope of work known as the Kauai Net Removal Project, and defined by the approved Consent Decree.

## Table of Contents

Updated?

Cover Page	X	
203 Organizational Assignments	X	
204 On Water Group Assignment	X	X
204 Shoreline Group Assignment	X	X
204 Container Loading Group	X	
205 Communications Plan	X	
Site Safety and Health Plan	X	
Waste Recovery and and Disposal Plan	X	

**FIELD ASSIGNMENTS**11-Oct-01  
20:00**Incident Name:** **Kauai Net Removal Project****Originating Section:** OPERATIONS **Branch:** On Water**Operational Period:** beginning 12-Oct-01 06:00 Friday  
ending 13-Oct-01 06:00 Saturday**Safety Message:** When cutting derelict nets and using cutting tools, be careful not to cut yourself. Using power tools usually requires wearing safety glasses. Supervisor discretion is allowed. Be careful around the surf zone as this is high risk area for slips and falls. We are on the third day of this good effort. Be aware of the rigging being used! Examine it for wear and potential failure. Always be aware of "Management of Change" issues.**Task Force:** **On Water Recovery Group** **Supervisor**  
Randy Cates**Strategic Objective:** Maintain a safe working environment for all personnel.

Remove nets in accordance with the approved Waste Recovery and Disposal Plan.

**Tasks:** Remove derelict nets, as directed by the authorized State and Federal Trustees. During this Ops Period concentrate efforts beginning from Moloa'a and continue toward Pila'a.**Resources:**

Position	Name	Equipment	Company
Supervisor	Randy Cates	48 foot work vessel	Safety Boats Hawaii
		Vessel Captain	Safety Boats Hawaii
		3 ea. Divers	Safety Boats Hawaii
		1 ea. Jet Ski Driver/deckhand	
		1 ea. Jet Ski with sled.	

prepared by:

Kim Beasley

Signature: \_\_\_\_\_

**FIELD ASSIGNMENTS**11-Oct-01  
20:00**Incident Name:** **Kauai Net Removal Project****Originating Section:** OPERATIONS **Branch:** On Water**Operational Period:** beginning 12-Oct-01 06:00 Friday  
ending 13-Oct-01 06:00 Saturday

**Safety Message:** When cutting derelict nets and using cutting tools, be careful not to cut yourself. Using power tools usually requires wearing safety glasses. Supervisor discretion is allowed. Be careful around the surf zone as this is high risk area for slips and falls. We are on the third day of this good effort. Be aware of the rigging being used! Examine it for wear and potential failure. Always be aware of "Management of Change" issues.

**Task Force:** **Shoreline Recovery Group** **Supervisor:** Dave Carter

Position	Name	Equipment	Company
----------	------	-----------	---------

**Strategic Objective:** Maintain a safe working environment for all personnel.

Remove nets in accordance with the approved Waste Recovery and Disposal Plan.

**Tasks:** Work to remove derelict nets along the coast of Kauai in coordination with the Offshore Net Recovery Group

Remove derelict nets, as directed by the authorized State and Federal Trustees. During this Ops Period continue to collect derelict nets beginning at North Kealia Beach. Continue north as long as the work period allows.

**Resources:**

Position	Name	Equipment	Company
Supervisor	David Carter	4 ea. 4x4 Pickup Trucks Group Supervisor	Budget Rentals PENCO
		3 ea. Diver/Shoreline	PENCO
		1 ea. Boom Truck	Island Crane & Rigging
		1 ea. Box Cargo Truck	PENCO
		1 ea. 1 Ton 4x4 P/U	via PENCO
		1 ea. 1/2 Ton 2x4 P/U	via PENCO

prepared by:

Kim Beasley

Signature: \_\_\_\_\_



**FIELD ASSIGNMENTS**11-Oct-01  
20:00**Incident Name:** **Kauai Net Removal Project****Originating Section:** OPERATIONS **Branch:** On Water**Operational Period:** beginning 12-Oct-01 06:00 Thursday  
ending 13-Oct-01 06:00 Friday

**Safety Message:** When cutting derelict nets and using cutting tools, be careful not to cut yourself. Using power tools usually requires wearing safety glasses. Supervisor discretion is allowed. Be careful around the surf zone as this is high risk area for slips and falls. We are on the third day of this good effort. Be aware of the rigging being used! Examine it for wear and potential failure. Always be aware of "Management of Change" issues.

**Task Force:** **Container Loading Group** **Supervisor:**  
Mike Latham

Position	Name	Equipment	Company
<b>Strategic Objective:</b>	Maintain a safe working environment for all personnel.		CIC
	Remove nets in accordance with the approved Waste Recovery and Disposal Plan.		
<b>Tasks:</b>	Receive, process and transport recovered net materials in accordance with the approved Waste Recovery and Disposal Plan.		
	Load the recovered materials into a Matson Container. Prepare the materials for shipment to Oahu.		
<b>Resources:</b>			
<b>Position</b>	<b>Name</b>	<b>Equipment</b>	
Supervisor	Mike Latham	1 ea. Forward lift telescoping fork lift	
Assistant	Kim Beasley	2 ea. Personnel	
		1 ea. Matson container	

**Resources:**

prepared by:

Kim Beasley

Signature: \_\_\_\_\_

# Kauai Net Removal Project Comms List (ICS 205)

ICS 205

28-Sep-01

Name	Organization	Work Phone	Cellular #	NexTel ID#	Pager #	Home #	e-mail
1 Dave Hoffman	Tesoro	547-3280	479-0577		290-2771	521-1786	dhoffman@tesoropetroleum.com
2 Mike Latham	Tesoro	547-3179	479-0593	30593	N/A	395-6027	mlatham@tesoropetroleum.com
3 Nathan Hokama	Tesoro	547-3639	479-0544		N/A	235-2614	nhokama@tesoropetroleum.com
4 Dennis Saito	Tesoro	547-3279					dsaito@tesoropetroleum.com
5 Kim Beasley	CIC	845-8465	479-0702	702	528-6778/251-8457	735-2739	kimb@cleanislands.org
6 Dave Carter	CIC/Perco	845-8465	479-3905	3905	528-6778/251-8352	261-1205	davecc@cleanislands.org
7 Stan Souza	CIC/Perco	823-6561	635-0879		644-1191		
8 Curtis Marsh	Trustee	588-4249	228-3799		251-1042	377-1286	cmartin@ena.health.state.hi.us
9 Liz Galvez	Trustee	588-4249	372-2162			456-1281	egalvez@ena.health.state.hi.us
10 Francis Ohai	Trustee	587-0094					Frances_gj@exec.state.hi.us
11 Don Heacock	Trustee	808-274-3344	808-639-7305		274-3448 fax		ecorran2@aol.com
12 John Naughton	Trustee	973-2835 Ext. 211	497-6395			262-9029	John.Naughton@noea.gov
13 Rod Stone	Sardstone Helicopter	833-5678	223-5678			924-3206	
14 Stan Sekimoto	DOT/Kauai Airport Manager	808-246-1400					
15	Police	808-241-6711					
16 Richard Sullivan	FAA	808-840-6100					
17 USCGC KITTIWAKE	USCG	808-246-0390					
18	County Civil Defense	808-241-6336	808-241-6711 (after hrs)				
19	Kauai Mayors Office	241-6300					
20 Robert B. Crowell	Kauai Dist. Manager - DOT/Harbor	808-241-3750			808-654-3038	808-245-8857	
21 Nelson Keller	Port. Allen Manager - DOT/Harbor	808-335-2121					
22 West Kauai Medical Cent	Hospital	808-338-9431	24 hr number				
23 Wilcox Memorial Hospital	Hospital	808-245-1100	24 hr number				
24 Air-1 Rescue	Helicopter/Emergency Medical	808-335-5009			808-654-2519		
25 Hollie Morrow	PENCO		635-0879				
26 Aston Kaha Lani (4460 N)	Condo	808-822-9331					
27 Randy Cates	Safety Boats Hawaii	808-479-7104	808 479-7104	11721			safetyboats@ic@aol.com
28							

# INCIDENT ACTION PLAN



Incident Name: **Kauai Net Removal Project**

Date Plan Prepared: October 13, 2001

Time: 20:00 hrs

Operational Period: Beginning  
Ending

11-Oct-01 0600 hrs Thursday  
16-Oct-01 0600 hrs Tuesday

Approvals: FOSC USCG

SOSC Department of Health

Responsible Party Representative

*For John Naughton*  
\_\_\_\_\_  
*[Signature]*  
\_\_\_\_\_  
*[Signature]*  
\_\_\_\_\_

This Incident Action Plan serves as a joint order from the FOSC and the SOSC and serves as an amendment, supplement and/or modification to the Federal and State of Hawaii Area Contingency Plan

## Table of Contents

Cover Page	X
201 Incident Briefing	
202 Incident Objectives	X
203 Organizational Assignments	X
204 Division Group Assignments	X
205 Communications Plan	Previously submitted, no changes
206 Medical Plan	
207 Organizational Chart	
Waste Management and and Disposal Plan	Previously submitted, no changes
Site Safety and Health Plan	Previously submitted, no changes
General Long Term Plan	
SCAT Survey Plan	
Sampling Plan	

**FIELD ASSIGNMENTS**12-Oct-01  
20:00Incident Name: **Kauai Net Removal Project**

Originating Section: OPERATIONS Branch: On Water

Operational Period: beginning 13-Oct-01 06:00 Saturday  
ending 14-Oct-01 06:00 Sunday

**Safety Message:** When cutting derelict nets and using cutting tools, be careful not to cut yourself. Using power tools usually requires wearing safety glasses. Supervisor discretion is allowed. Be careful around the surf zone as this is high risk area for slips and falls. We are on the third day of this good effort. Be aware of the rigging being used! Examine it for wear and potential failure. Always be aware of "Management of Change" issues.

**Task Force: Container Loading Group**Supervisor:  
Mike Latham

Position	Name	Equipment	Company
----------	------	-----------	---------

<b>Strategic Objective:</b>	Maintain a safe working environment for all personnel.	CIC	
-----------------------------	--	-----	--

Remove nets in accordance with the approved Waste Recovery and Disposal Plan.

**Tasks:** Receive, process and transport recovered net materials in accordance with the approved Waste Recovery and Disposal Plan.

Load the recovered materials into a Matson Container. Prepare the materials for shipment to Oahu.

**Resources:**

Position	Name	Equipment
Supervisor	Mike Latham	1 ea. Forward lift telescoping fork lift
Assistant	Kim Beasley	2 ea. Personnel
		1 ea. Matson container

prepared by:

Kim Beasley

Signature: \_\_\_\_\_

**FIELD ASSIGNMENTS**12-Oct-01  
20:00Incident Name: **Kauai Net Removal Project**

Originating Section: OPERATIONS Branch: On Water

Operational Period: beginning 13-Oct-01 06:00 Saturday  
ending 14-Oct-01 06:00 Sunday

**Safety Message:** When cutting derelict nets and using cutting tools, be careful not to cut yourself. Using power tools usually requires wearing safety glasses. Supervisor discretion is allowed. Be careful around the surf zone as this is high risk area for slips and falls. We are on the third day of this good effort. Be aware of the rigging being used! Examine it for wear and potential failure. Always be aware of "Management of Change" issues.

**Task Force:** **Shoreline Recovery Group** Supervisor: Dave Carter

Position	Name	Equipment	Company
----------	------	-----------	---------

**Strategic Objective:** Maintain a safe working environment for all personnel.

Remove nets in accordance with the approved Waste Recovery and Disposal Plan.

**Tasks:** Work to remove derelict nets along the coast of Kauai in coordination with the Offshore Net Recovery Group

Remove derelict nets, as directed by the authorized State and Federal Trustees. During this Ops Period continue to collect derelict nets beginning at North Kealia Beach. Continue north as long as the work period allows.

**Resources:**

Position	Name	Equipment	Company
Supervisor	David Carter	4 ea. 4x4 Pickup Trucks Group Supervisor	Budget Rentals PENCO
		3 ea. Diver/Shoreline	PENCO
		1 ea. Boom Truck	Island Crane & Rigging
		1 ea. Box Cargo Truck	PENCO
		1 ea. 1 Ton 4x4 P/U	via PENCO
		1 ea. 1/2 Ton 2x4 P/U	via PENCO

prepared by: Kim Beasley

Signature: \_\_\_\_\_

**FIELD ASSIGNMENTS**12-Oct-01  
20:00Incident Name: **Kauai Net Removal Project**Originating Section: **OPERATIONS** Branch: **On Water**Operational Period: beginning 13-Oct-01 06:00 Saturday  
ending 14-Oct-01 06:00 Sunday

**Safety Message:** When cutting derelict nets and using cutting tools, be careful not to cut yourself. Using power tools usually requires wearing safety glasses. Supervisor discretion is allowed. Be careful around the surf zone as this is high risk area for slips and falls. We are on the third day of this good effort. Be aware of the rigging being used! Examine it for wear and potential failure. Always be aware of "Management of Change" issues.

**Task Force:** **On Water Recovery Group** Supervisor  
Randy Cates

**Strategic Objective:** Maintain a safe working environment for all personnel.

Remove nets in accordance with the approved Waste Recovery and Disposal Plan.

**Tasks:** Remove derelict nets, as directed by the authorized State and Federal Trustees. During this Ops Period continue to concentrate efforts between Moloa'a and Pila'a.

**Resources:**

Position	Name	Equipment	Company
Supervisor	Randy Cates	48 foot work vessel	Safety Boats Hawaii
		Vessel Captain	Safety Boats Hawaii
		3 ea. Divers	Safety Boats Hawaii
		1 ea. Jet Ski Driver/deckhand	
		1 ea. Jet Ski with sled.	

prepared by:

Kim Beasley

Signature: \_\_\_\_\_

# INCIDENT ACTION PLAN



Incident Name: **Kauai Net Removal Project**

Date Plan Prepared: **October 13, 2001**

Time: **20:00 hrs**

Operational Period: **Beginning**  
**Ending**

**11-Oct-01 0600 hrs Thursday**  
**16-Oct-01 0600 hrs Tuesday**

Approvals: **FOSC USCG**

**SOSC Department of Health**

**Responsible Party Representative**

*for John Naughton Jr*  
*[Signature]*  
*[Signature]*

This Incident Action Plan serves as a joint order from the FOSC and the SOSC and serves as an amendment, supplement and/or modification to the Federal and State of Hawaii Area Contingency Plan

## Table of Contents

Cover Page	X
201 Incident Briefing	
202 Incident Objectives	
203 Organizational Assignments	X
204 Division Group Assignments	X
205 Communications Plan	Previously submitted, no changes
206 Medical Plan	
207 Organizational Chart	
Waste Management and and Disposal Plan	Previously submitted, no changes
Site Safety and Health Plan	Previously submitted, no changes
General Long Term Plan	
SCAT Survey Plan	
Sampling Plan	

**FIELD ASSIGNMENTS**13-Oct-01  
20:00Incident Name: **Kauai Net Removal Project**

Originating Section: OPERATIONS Branch: On Water

Operational Period: beginning 14-Oct-01 06:00 Sunday  
ending 15-Oct-01 06:00 Monday

**Safety Message:** When cutting derelict nets and using cutting tools, be careful not to cut yourself. Using power tools usually requires wearing safety glasses. Supervisor discretion is allowed. Be careful around the surf zone as this is high risk area for slips and falls. The northwest swell is coming up. Please continue to use good judgement regarding which nets to go for. **SAFETY FIRST IN A CULTURE OF SAFETY.**

**Task Force: Shoreline Recovery Group** Supervisor: Dave Carter

Position	Name	Equipment	Company
----------	------	-----------	---------

**Strategic Objective:** Maintain a safe working environment for all personnel.

Remove nets in accordance with the approved Waste Recovery and Disposal Plan.

**Tasks:** Work to remove derelict nets along the coast of Kauai in coordination with the Offshore Net Recovery Group

Remove derelict nets, as directed by the authorized State and Federal Trustees. During this Ops Period continue to collect derelict nets beginning at the housing area near Taco Bell. On the Net Identification List, begin exploring opportunities to recover the nets represented by line items numbers 18 - 7. Continue next as as possible to the line item numbers 39 - 37. **Be aware as high surf may be present.**

**Resources:**

Position	Name	Equipment	Company
Supervisor	David Carter	4 ea. 4x4 Pickup Trucks Group Supervisor	Budget Rentals PENCO
		3 ea. Diver/Shoreline	PENCO
		1 ea. Boom Truck	Island Crane & Rigging
		1 ea. Box Cargo Truck	PENCO
		1 ea. 1 Ton 4x4 P/U	via PENCO
		1 ea. 1/2 Ton 2x4 P/U	via PENCO

prepared by: Kim Beasley

Signature: \_\_\_\_\_



**FIELD ASSIGNMENTS**13-Oct-01  
20:00**Incident Name:** **Kauai Net Removal Project****Originating Section:** OPERATIONS **Branch:** On Water**Operational Period:** beginning 14-Oct-01 06:00 Sunday  
ending 15-Oct-01 06:00 Monday**Safety Message:** When cutting derelict nets and using cutting tools, be careful not to cut yourself. Using power tools usually requires wearing safety glasses. Supervisor discretion is allowed. Be careful around the surf zone as this is high risk area for slips and falls. The northwest swell is coming up. Please continue to use good judgement regarding which nets to go for. **SAFETY FIRST IN A CULTURE OF SAFETY.****Task Force:** **On Water Recovery Group** **Supervisor**  
Randy Cates**Strategic Objective:** Maintain a safe working environment for all personnel.

Remove nets in accordance with the approved Waste Recovery and Disposal Plan.

**Tasks:** Remove derelict nets, as directed by the authorized State and Federal Trustees. During this Ops Period be very aware that we are experiencing a very significant northwest swell. High surf can be expected. Safety is the watchword. With this in mind, if possible, explore opportunities of net removal along the Wailua Golf Course area. Also consider the southern area beyond Nawiliwili Harbor, an area in the lee of the northwest weather. If this is too rough, proceed to shore and assist the Shoreline Group.**Resources:**

Position	Name	Equipment	Company
Supervisor	Randy Cates	48 foot work vessel	Safety Boats Hawaii
		Vessel Captain	Safety Boats Hawaii
		3 ea. Divers	Safety Boats Hawaii
		1 ea. Jet Ski Driver/deckhand	
		1 ea. Jet Ski with sled.	

prepared by:

Kim Beasley

Signature: \_\_\_\_\_

**FIELD ASSIGNMENTS**13-Oct-01  
20:00**Incident Name:** **Kauai Net Removal Project****Originating Section:** OPERATIONS **Branch:** On Water**Operational Period:** beginning 14-Oct-01 06:00 Sunday  
ending 15-Oct-01 06:00 Monday

**Safety Message:** When cutting derelict nets and using cutting tools, be careful not to cut yourself. Using power tools usually requires wearing safety glasses. Supervisor discretion is allowed. Be careful around the surf zone as this is high risk area for slips and falls. The northwest swell is coming up. Please continue to use good judgement regarding which nets to go for. **SAFETY FIRST IN A CULTURE OF SAFETY.**

**Task Force:** **Container Loading Group** **Supervisor:** Mike Latham

Position	Name	Equipment	Company
<b>Strategic Objective:</b>	Maintain a safe working environment for all personnel.		CIC
	Remove nets in accordance with the approved Waste Recovery and Disposal Plan.		
<b>Tasks:</b>	Receive, process and transport recovered net materials in accordance with the approved Waste Recovery and Disposal Plan.		
	Load the recovered materials into a Matson Container. Prepare the materials for shipment to Oahu.		

**Recources:**

Position	Name	Equipment
Supervisor	Mike Latham	1 ea. Forward lift telescoping fork lift
Assistant	Kim Beasley	2 ea. Personnel
		1 ea. Matson container

**prepared by:** Kim Beasley**Signature:** \_\_\_\_\_

# Kauai Net Removal Project Comms List (ICS 205)

ICS 205

28-Sep-01

Name	Organization	Work Phone	Cellular #	Nextel ID#	Pager #	Home #	e-mail
1 Dave Hoffman	Tesororo	547-3280	479-0577		290-2771	521-1786	dhoffman@tesoropetroleum.com
2 Mike Latham	Tesororo	547-3179	479-0593	30593	N/A	395-6027	mlatham@tesoropetroleum.com
3 Nathan Hokama	Tesororo	547-3639	479-0544		N/A	235-2614	nhokama@tesoropetroleum.com
4 Dennis Saito	Tesororo	547-3279					dsaito@tesoropetroleum.com
5 Kim Beasley	CIC	845-8465	479-0702	702	528-6778/251-8457	735-2739	kimb@cleanislands.org
6 Dave Carter	CIC/Penco	845-8465	479-3905	3905	528-6778/251-8352	261-1205	davec@cleanislands.org
7 Stan Souza	CIC/Penco	823-6561	635-0879		644-1191		
8 Curtis Martin	Trustee	586-4249	228-3799		251-1042	377-1266	cmartin@ha.health.state.hi.us
9 Liz Galvez	Trustee	586-4249	372-2162			456-1291	egalvez@ha.health.state.hi.us
10 Francis Oishi	Trustee	587-0094					Frances_oishi@exec.state.hi.us
11 Don Heacock	Trustee	808-274-3344	808-639-7305		274-3448 fax		ecomman2@aol.com
12 John Naughton	Trustee	973-2935 Ext. 211	497-6395			262-9029	John.Naughton@noaa.gov
13 Rod Stone	Sardstone Helicopter	833-5678	223-5678		299-3540	924-3206	
14 Stan Sekimoto	DOT/Kauai Airport Manager	808-246-1400					
15	Police	808-241-6711					
16 Richard Sullivan	FAA	808-840-6100					
17 USCGC KITTIWAKE	USCG	808-246-0390					
18	County Civil Defense	808-241-6336	808-241-6711 (after hrs)				
19	Kauai Mayors Office	241-6300					
20 Robert B. Crowell	Kauai Dist. Manager - DOT/Harbor	808-241-3750			808-654-3038	808-245-6857	
21 Nelson Keller	Pt. Allen Manager - DOT/Harbor	808-335-2121					
22 West Kauai Medical Center	Hospital	808-338-9431	24 hr number				
23 Wilcox Memorial Hospital	Hospital	808-245-1100	24 hr number				
24 Air-1 Rescue	Helicopter/Emergency Medical	808-335-5009			808-654-2519		
25 Hollie Morrow	PENCO		635-0879				
26 Aston Kaha Lani (4460 N)	Condo	808-822-9331					
27 Randy Cates	Safety Boats Hawaii	808-479-7104	808-479-7104	11721			safetyboatshi@aol.com
28							

CUSTOMER COPY

No. 120185

10/11

**BREWER ENVIRONMENTAL INDUSTRIES, LLC**

HONOLULU, OAHU • TELEPHONE 532-7400  
DANIEL S PUNA, OAHU • TELEPHONE 882-2400  
WAKAPU, MAUI • TELEPHONE 244-3761

HILO, HAWAII • TELEPHONE 933-7800  
NAWANA, HAWAII • TELEPHONE 882-1777  
PUHI, KAUAI • TELEPHONE 241-7333

MATT

DATE 10-11-01 CUSTOMER P.O. NO. REFERENCE NO. 1054409

SOLD TO KAC.

ADDRESS

HAULER Yacala

COMMODITY

\$0.00

SOLUTIONS  BAGS  ACIDS  
 SUSPENSION  BULK  OTHERS

@ % NET GALS NET TONS NET LBS

METER SCALE

FINISH	3:17PM	LOOP #16	6.41 tn	IN	START
START	11.40 tn	GR			
	6.41 tn	TA			
	4.99 tn	NT			
	1:03PM	LOOP #16			

STATE OF HAWAII  
CERTIFICATE OF MEASURE  
DIVISION OF MEASUREMENT STANDARDS  
DEPARTMENT OF AGRICULTURE

This certifies to the accuracy and identity of the quantity and commodity shown. It is suitable for all deliveries when sealed by a measurmaster.

NO. 3795  
STATE OF HAWAII  
C. E. Dralo  
SCALE  
MEASUREMASTER  
DATE 10/11/01

NO. 3375  
STATE OF HAWAII  
C. E. Dralo  
SCALE  
MEASUREMASTER  
DATE 10/11/01

w/ YBrothers B/LH 71758074

CUSTOMER COPY

No. 120181

**BREWER ENVIRONMENTAL INDUSTRIES, LLC**

HONOLULU, OAHU • TELEPHONE 532-7400  
BARBER'S POINT, OAHU • TELEPHONE 882-2400  
WAIKAPU, MAUI • TELEPHONE 244-3781

HILO, HAWAII • TELEPHONE 833-7800  
KAWAHAE, HAWAII • TELEPHONE 882-7777  
PUNA, KAUAI • TELEPHONE 241-7333

DATE 10-10-01	CUSTOMER P.O. NO.	REFERENCE NO. <i>MATY</i> 10 1055452
SOLD TO <i>K Co.</i>		
ADDRESS		
HAULER <i>Jim Adams</i>		
COMMODITY <i>Man Council</i>		
<input type="checkbox"/> SOLUTIONS	<input type="checkbox"/> BAGS	<input type="checkbox"/> ACIDS
<input type="checkbox"/> SUSPENSION	<input type="checkbox"/> BULK	<input type="checkbox"/> OTHERS
		NET GALS
		NET TONS <i>4.22</i>
@	%	NET LBS <i>8440</i>
METER		SCALE

FINISH	1:20PM	LOOP #32	6.42 tn	IN	START
START			10.64 tn	GR	
			6.42 tn	TA	
			4.22 tn	NT	
	1:18PM	LOOP #32			

STATE OF HAWAII  
CERTIFICATE OF MEASURE  
DIVISION OF MEASUREMENT STANDARDS  
DEPARTMENT OF AGRICULTURE

This certifies to the accuracy and identity of the quantity and commodity shown. It is suitable for all deliveries when sealed by a measurer.

NO. 3395	NO. 3395
<i>P. G. Drake</i>	<i>P. G. Drake</i>
X	X
STATE OF HAWAII SCALE MEASUREMASTER	STATE OF HAWAII SCALE MEASUREMASTER
DATE 10/10/01	DATE 10/11/01

CUSTOMER COPY  
No. 120191

**BREWER ENVIRONMENTAL INDUSTRIES, LLC**

HONOLULU, OAHU • TELEPHONE 532-7400  
BARBER'S POINT, OAHU • TELEPHONE 882-2400  
WAIKAPU, MAUI • TELEPHONE 244-3761

HILO, HAWAII • TELEPHONE 888-7000  
KAWAHAE, HAWAII • TELEPHONE 882-7777  
PUHI, KAUAI • TELEPHONE 241-7333

10-12-01 CUSTOMER P.O. NO. REFERENCE NO. *MAUI 655489*

TO *KCC*

ESS

HAULER *E Sugimoto Truck*

COMMODITY *Fish Nets* NET GALS

SOLUTIONS  BAGS  ACIDS  
 SUSPENSION  BULK  OTHERS NET TONS *5.09*

% NET LBS *10,180#*

SCALE

2:57PM LOOP #23 6.34 tn IN

11.43 tn GR

6.34 tn TA

5.09 tn NT

9:33AM LOOP #23

CUSTOMER COPY  
No. 120225

**BREWER ENVIRONMENTAL INDUSTRIES, LLC**

HONOLULU, OAHU • TELEPHONE 532-7400  
BARBER'S POINT, OAHU • TELEPHONE 882-2400  
WAIKAPU, MAUI • TELEPHONE 244-3761

HILO, HAWAII • TELEPHONE 888-7000  
KAWAHAE, HAWAII • TELEPHONE 882-7777  
PUHI, KAUAI • TELEPHONE 241-7333

DATE 10-12-01 CUSTOMER P.O. NO. REFERENCE NO. *65544*

SOLD TO *KCC*

ADDRESS

HAULER *E Sugimoto Truck*

COMMODITY *Fish Nets* NET GALS

SOLUTIONS  BAGS  ACIDS  
 SUSPENSION  BULK  OTHERS NET TONS *6.99*

@ % NET LBS *13980#*

METER SCALE

2:01PM LOOP #21 6.24 tn IN

13.23 tn GR

6.24 tn TA

6.99 tn NT

10:21AM LOOP #21

STATE OF HAWAII  
CERTIFICATE OF MEASURE  
DIVISION OF MEASUREMENT STANDARDS  
DEPARTMENT OF AGRICULTURE

This certifies to the accuracy and identity of the quantity and commodity shown. It is suitable for all deliveries when sealed by a measuremaster.

NO. *3395*

STATE OF HAWAII  
*[Signature]*  
SCALE  
MEASUREMASTER

DATE *10/12/01*

NO. *3396*

STATE OF HAWAII  
*[Signature]*  
SCALE  
MEASUREMASTER

DATE *10/15/01*

STATE OF HAWAII  
CERTIFICATE OF MEASURE  
DIVISION OF MEASUREMENT STANDARDS  
DEPARTMENT OF AGRICULTURE

This certifies to the accuracy and identity of the quantity and commodity shown. It is suitable for all deliveries when sealed by a measuremaster.

NO. *3395*

STATE OF HAWAII  
*[Signature]*  
SCALE  
MEASUREMASTER

DATE *10/12/01*

NO. *3396*

STATE OF HAWAII  
*[Signature]*  
SCALE  
MEASUREMASTER

DATE *10/15/01*

DISPATCH TICKET

No 201448

#1



207 Puuhale Road  
Honolulu, HI 96819  
PH: (808) 842-3181  
FAX: (808) 842-0979

Horizon  
Puuhe Services of Hawaii, Inc.

DISPATCH  SCALE

DATE OF DISPATCH 10/20/01  
 CUSTOMER / COMPANY NET RECYCLING PRAPER  
 ADDRESS 20' CONT # MATU 6554896  
 CONTACT TANAKA TRUCK CO.  
 PHONE \_\_\_\_\_ VENDOR # \_\_\_\_\_

COMMODITY	NO. OF UNITS	WEIGHT	PRICE	AMOUNT
CPO				
WL				
MIX / OP				
ALUM CANS				
GLASS		9880		
OCC		620 (TAN-BAG)		
ONP				
PLASTIC				
OTHER				
		(9260) TOTAL WEIGHT		
		NETTING		

GROSS LBS. 47760 TOTAL PAID \$ \_\_\_\_\_  
 TARE LBS. 37880 EMPLOYEE / DRIVER \_\_\_\_\_  
 NET LBS. 9880 CUSTOMER SIGNATURE \_\_\_\_\_  
620 X 9260  
 TYPE OF ACCOUNT:  CASH  CREDIT  ACCOUNT

DISPATCH TICKET

No 201449

#2



207 Puuhale Road  
Honolulu, HI 96819  
PH: (808) 842-3181  
FAX: (808) 842-0979

Horizon  
Puuhe Services of Hawaii, Inc.

DISPATCH  SCALE

DATE OF DISPATCH 10/20/01  
 CUSTOMER / COMPANY NET RECYCLING PRAPER  
 ADDRESS 20' CONT # MATU 655444  
 CONTACT TANAKA TRUCK CO.  
 PHONE \_\_\_\_\_ VENDOR # \_\_\_\_\_

COMMODITY	NO. OF UNITS	WEIGHT	PRICE	AMOUNT
CPO				
WL				
MIX / OP				
ALUM CANS				
GLASS				
OCC				
ONP				
PLASTIC				
OTHER				
		NETTING		

GROSS LBS. 51760 TOTAL PAID \$ \_\_\_\_\_  
 TARE LBS. 37880 EMPLOYEE / DRIVER \_\_\_\_\_  
 NET LBS. 13900 CUSTOMER SIGNATURE \_\_\_\_\_  
 X  
 TYPE OF ACCOUNT:  CASH  CREDIT  ACCOUNT

DISPATCH TICKET

No 201452

# 3



207 Puuhale Road  
Honolulu, HI 96816  
PH: (808) 842-3181  
FAX: (808) 842-0979

DISPATCH  SCALE

DATE OF DISPATCH 10/22/01  
 CUSTOMER / COMPANY NET RECYCLING PROJECT  
 ADDRESS 20' CONT# MATU 6549298  
 CONTACT TANAKA TRK. CO.  
 PHONE \_\_\_\_\_ VENDOR # \_\_\_\_\_

COMMODITY	NO. OF UNITS	WEIGHT	PRICE	AMOUNT
CPO				
WL				
MIX / OP				
ALUM CANS				
GLASS				
OCC				
ONP				
PLASTIC				
OTHER	<u>NETTING</u>			

GROSS LBS. 47660 TOTAL PAID \$ \_\_\_\_\_  
 TARE LBS. 37780  
 NET LBS. 9880 X  
 TYPE OF ACCOUNT:  CASH  CREDIT  ACCOUNT  
 EMPLOYEE / DRIVER \_\_\_\_\_ CUSTOMER SIGNATURE \_\_\_\_\_

DISPATCH TICKET

No 201450

# 4



207 Puuhale Road  
Honolulu, HI 96819  
PH: (808) 842-3181  
FAX: (808) 842-0979

DISPATCH  SCALE

DATE OF DISPATCH 10/22/01  
 CUSTOMER / COMPANY NET RECYCLING PROJECT  
 ADDRESS 20' CONT# MATU 6534520  
 CONTACT TANAKA TRK. CO.  
 PHONE \_\_\_\_\_ VENDOR # \_\_\_\_\_

COMMODITY	NO. OF UNITS	WEIGHT	PRICE	AMOUNT
CPO				
WL				
MIX / OP				
ALUM CANS				
GLASS				
OCC				
ONP				
PLASTIC				
OTHER	<u>NETTING</u>			

GROSS LBS. 46120 TOTAL PAID \$ \_\_\_\_\_  
 TARE LBS. 37800  
 NET LBS. 8320 X  
 TYPE OF ACCOUNT:  CASH  CREDIT  ACCOUNT  
 EMPLOYEE / DRIVER \_\_\_\_\_ CUSTOMER SIGNATURE \_\_\_\_\_



Plastic Grinding & Recycling of Hawaii  
 7 Waterfront Plaza Suite 400  
 500 Ala Moana Blvd  
 Honolulu, HI 96813

# Invoice

DATE	INVOICE #
11/6/2001	1

**BILL TO**

Clean Island Council  
 David Carter  
 179 Sand Island Road  
 Honolulu, Hawaii 96819

**SHIP TO**

Clean Island Council  
 David Carter  
 179 Sand Island Road  
 Honolulu, Hawaii 96819

P.O. NUMBER	TERMS	REP	SHIP	VIA	F.O.B.	PROJECT
	Due on receipt		11/2/2001			

QUANTITY	ITEM CODE	DESCRIPTION	PRICE EACH	AMOUNT
20.68 Tons		Fishing Net: All net to be recycled and exported to China.	43.5201	900.00

**PAID**

Date 11/27/01  
 Check # 15300  
 Amount Paid \$ 900.00

**Total** \$900.00

**KAUAI NET REMOVAL PROJECT  
OPERATIONS SUMMARY**

<b>EAST SHORE WORK AREA</b>									
Line Item	Date	Location	GPS Position		Comments	Net Status			
			Latitude	Longitude		Removed	Not Removed		
1		South edge of Kilauea Point wildlife refuge	22° 13.08' N	159° 22.67' W	North terminus of east shore work area.				
2	10/12/01	North of Pfluger property.	22° 12.86' N	159° 22.03' W	Cluster of nets. <i>Poor shore access. Surf too large for removal by boat.</i>				✓
3	10/12/01	North of Pfluger property.	22° 12.79' N	159° 21.95' W	Cluster of nets. <i>Poor shore access. Surf too large for removal by boat.</i>				✓
4	10/12/01	Vicinity of Larson's Beach	22° 12.77' N	159° 20.85' W	Medium cluster of nets. <i>Poor shore access. Surf too large for removal by boat.</i>				✓
5	10/12/01	North of Pakala Point	22° 12.53' N	159° 20.48' W	Large clump of white net on beach, sandy shoreline. <i>Poor shore access. Surf too large for removal by boat.</i>				✓
6	10/12/01	Pakala Point	22° 12.16' N	159° 20.06' W	Large clump of net on rocky shore below house. Pila'a Public Beach access. <i>Net removed by On-Water Group.</i>			✓	
7	10/12/01	Vicinity of Pakala	22° 12.12' N	159° 19.97' W	Large clump of net on rocky shore. <i>Net removed by On-Water Group.</i>			✓	
8	10/12/01		22° 11.83' N	159° 19.87' W	<i>Net removed by On-Water Group.</i>			✓	
9	10/12/01		22° 11.08' N	159° 18.79' W	Net in surf zone. <i>Net removed by On-Water Group.</i>			✓	
10	10/12/01	South of Moloa'a Bay	22° 10.75' N	159° 18.67' W	Large net at base of cliff. Many scattered net remnants between Pila'a and Moloa'a Bays. Very poor and limited access to shoreline, steep cliff and rocky outcroppings rocky shoreline. <i>4 large nets removed from this area by On-Water Group.</i>			✓	
11	10/13/01	North of Papa'a Bay	22° 10.51' N	159° 18.72' W	Road access, with bluff. <i>Net too large for removal by On-Water Group; broke four tow lines in attempt to remove net.</i>				✓

**KAUAI NET REMOVAL PROJECT  
OPERATIONS SUMMARY**

<b>EAST SHORE WORK AREA</b>								<b>Net Status</b>	
Line Item	Date	Location	GPS Position		Comments	Removed	Not Removed		
			Latitude	Longitude				Removed	Not Removed
12	10/13/01	North of Papa'a Bay	22° 10.54' N	159° 18.74' W	4 net cluster - 200 yrs. North 1 large net removed by On-Water Group; not a net cluster.	✓			
13	10/13/01	General area of Papa'a Bay	22° 10.29' N	159° 18.65' W	Scattered net remnants along the shoreline in this area. 2 nets removed from this area.	✓			
14		1/4 mile south of Papa'a Bay	22° 10.20' N	159° 18.60' W	Nets buried under the sand in this area.				✓
15			22° 09.98' N	159° 18.48' W	Small net cluster on beach.				✓
16		North of Aliamanu Road	22° 09.88' N	159° 18.50' W	Small blue net.				✓
17		South end of Aliamanu Road	22° 09.45' N	159° 18.26' W					✓
18	10/13/01	South end of Anahola Bay	22° 08.86' N	159° 17.84' W	Large net in the rocks. No net observed at this location by removal team.				✓
19		Kahala Point	22° 08.82' N	159° 17.71' W		✓			
20	10/13/01	Kahala Point	22° 08.72' N	159° 17.64' W	Big net at north end of Kahala Point.	✓			
21	10/13/01	South of Kohala Point	22° 08.68' N	159° 17.63' W	Several large nets.	✓			
22	10/13/01		22° 08.59' N	159° 17.59' W	Very large net in rocks.	✓			
23	10/13/01	Vicinity of Lae Lipoa	22° 08.40' N	159° 17.57' W		✓			
24	10/13/01		22° 08.25' N	159° 17.61' W	1/4 mile south of Kahala Point - Hawaiian Home Lands	✓			
25	10/13/01		22° 08.14' N	159° 17.62' W	Some net clusters. Rocky shoreline, very difficult access.	✓			
26	10/13/01		22° 07.79' N	159° 17.57' W	Cluster of nets at Kurnukumu area.	✓			
27	10/13/01	Vicinity of Pohakuloa Point	22° 07.59' N	159° 17.55' W	Large net remnant on beach. Seal in vicinity.	✓			
28	10/14/01	Between Anapalau Point and Pohakuloa Point	22° 07.45' N	159° 17.59' W	Large net, with white float, on shoreline. Steep cliff face, with loose rock and dirt. Dangerous access.				✓

**KAUAI NET REMOVAL PROJECT  
OPERATIONS SUMMARY**

<b>EAST SHORE WORK AREA</b>									
Line Item	Date	Location	GPS Position		Comments	Net Status			
			Latitude	Longitude		Removed	Not Removed		
29			22° 07.38' N	159° 17.58' W	Large net in the rocks.				
30	10/12/01	North of "The Crack"	22° 07.33' N	159° 17.70' W	Net cluster.	✓			
31	10/12/01	"The Crack"	22° 07.27' N	159° 17.73' W	Net in rocks at edge of beach.	✓			
32	10/12/01	North end of Donkey Beach	22° 06.98' N	159° 17.71' W	Large concentration of net clusters.	✓			
33	10/12/01		22° 06.72' N	159° 17.69' W	Net in rocks	✓			
34	10/12/01		22° 06.45' N	159° 17.75' W	Net in rocks @ Kealia Makai	✓			
35	10/12/01		22° 06.44' N	159° 17.76' W	Net in rocks	✓			
36	10/12/01	Further north from north end of Kealia Beach	22° 06.41' N	159° 17.78' W	Net in rocks	✓			
37	10/12/01	North of Kealia Beach	22° 06.10' N	159° 17.97' W	Large concentration of net clusters.	✓			
38	10/12/01	North of Kealia Beach	22° 06.07' N	159° 18.01' W	Large concentration of net clusters.	✓			
39	10/12/01	North of Kealia Beach	22° 06.03' N	159° 18.07' W	Large net in surf line.	✓			
40	10/13/01	North of old pier at Kealia Beach	22° 05.99' N	159° 18.11' W		✓			
41	10/13/01	Old pier at Kealia Beach	22° 05.96' N	159° 18.11' W	Small cluster of net	✓			
42	10/13/01	Just further north from scenic lookout at Kealia Beach	22° 05.45' N	159° 18.35' W	Clump of small nets in sand. <i>Cluster of net buried in sand; dug down and cut out.</i>	✓			
43	10/13/01	Scenic lookout at Kealia Beach	22° 05.27' N	159° 18.41' W	Good access to area from cane haul road, large net cluster.	✓			
44	10/13/01		22° 05.15' N	159° 18.50' W	Small net cluster.	✓			
45	10/13/01	Mahailona Hospital	22° 05.04' N	159° 18.59' W	Small net cluster	✓			
46	10/14/01	Kapaa Community Swimming Pool	22° 04.86' N	159° 18.71' W	Net in dirt, 150 yds. North of swimming pool, very small net. <i>Removed very small net from area.</i>	✓			

**KAUAI NET REMOVAL PROJECT  
OPERATIONS SUMMARY**

<b>EAST SHORE WORK AREA</b>				<b>GPS Position</b>		<b>Comments</b>	<b>Net Status</b>	
<b>Line Item</b>	<b>Date</b>	<b>Location</b>	<b>Latitude</b>	<b>Longitude</b>	<b>Removed</b>		<b>Not Removed</b>	
47	10/14/01	Kapaa Cana	22° 04.27' N	159° 18.98' W	Small net on north side of jetty	✓		
48	10/14/01	Adjacent to housing near Taco Bell	22° 03.84' N	159° 19.07' W	Large net on beach (100 yds. south of Fuji Beach) Removed 1 very large net from area.	✓		
49	10/14/01	North of Matsuda store	22° 03.75' N	159° 19.07' W	Small net in area.	✓		
50	10/14/01	Adjacent to Bullshed Restaurant	22° 03.25' N	159° 19.93' W	Large bundle of net. Removed very large cluster of net.	✓		
51	10/14/01	Beach Boy Hotel	22° 03.21' N	159° 19.91' W	Large net cluster in front of hotel. Sandy shoreline, good access.	✓		
52	10/14/01	Lydgate State Park			Net on Lydgate State Park breakwater. Removed 1 medium sized net cluster from south side of jetty. 2nd medium sized cluster still in surf zone.	✓		
53	10/14/01	Next to Lydgate State Park	22° 02.22' N	159° 20.11' W	Not observed from shoreline		✓	
54	10/14/01	North end of Wailua Golf Course	22° 01.89' N	159° 20.23' W	Big net cluster north end of golf course		✓	
55	10/14/01	North of Wailua Golf Course	22° 01.59' N	159° 20.28' W	Not observed from shoreline		✓	
56	10/14/01	North of Wailua Golf Course	22° 01.58' N	159° 20.30' W	Not observed from shoreline		✓	
57	10/14/01	Wailua Golf Course	22° 01.48' N	159° 20.31' W	Net off driving range. Cut out down to sand level; large blue tarp removed.	✓		
59		Radisson Hotel	22° 00.70' N	159° 20.19' W	Net on jetty	✓		
60		Radisson Hotel	22° 00.66' N	159° 20.17' W	Small net cluster just prior to hotel and golf course. Sandy shoreline, good access.	✓		
61	10/10/01	Middle north side of Hanamaulu Bay	21° 59.67' N	159° 20.20' W	4 large nets. Removed by On-Water Group.	✓		
62	10/10/01	Middle south side of Hanamaulu Bay	21° 59.50' N	159° 20.29' W	Cluster of nets. Removed by On-Water Group.	✓		
63		Lihue Airport	21° 58.89' N	159° 20.52' W	Not observed from shoreline		✓	
64	10/1/01	Lihue Airport	21° 59.16' N	159° 20.02' W	6 net cluster on shore, end of runway 3.	✓		

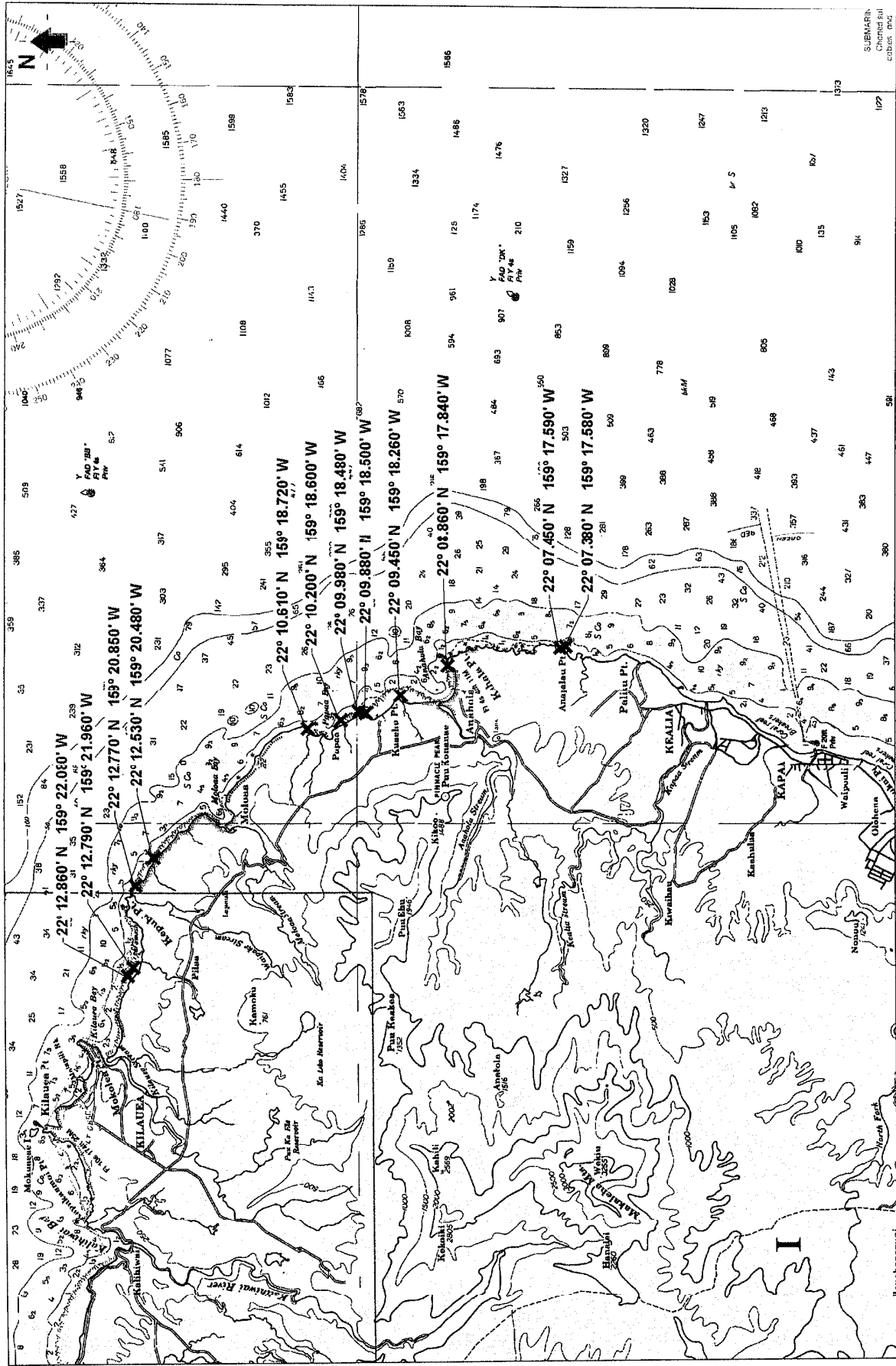
**KAUAI NET REMOVAL PROJECT  
OPERATIONS SUMMARY**

EAST SHORE WORK AREA				GPS Position		Comments	Net Status	
				Latitude	Longitude		Removed	Not Removed
Line Item	Date	Location	Latitude	Longitude	Comments	Removed	Not Removed	
65	10/11/01	Eastern shore between Hanamaulu Bay and Ninini Point	21° 58.71' N	159° 20.01' W	3 net cluster.	✓		
66	10/11/01	Eastern shore between Hanamaulu Bay and Ninini Point	21° 58.35' N	159° 19.89' W	Yellow and white net in surf.	✓		
67	10/11/01	Eastern shore between Hanamaulu Bay and Ninini Point	21° 58.31' N	159° 19.88' W	Net in surf.	✓		
68	10/11/01	Eastern shore between Hanamaulu Bay and Ninini Point	21° 58.14' N	159° 19.89' W	Nets in rocks.	✓		
69	10/11/01	Eastern shore between Hanamaulu Bay and Ninini Point	21° 58.07' N	159° 19.86' W	Large net in surf zone.	✓		
70	10/11/01	Eastern shore between Hanamaulu Bay and Ninini Point	21° 58.02' N	159° 19.85' W	Cluster of nets.	✓		
71	10/11/01	Eastern shore between Hanamaulu Bay and Ninini Point	21° 57.95' N	159° 19.84' W	Green net.	✓		
72	10/11/01	Eastern shore between Hanamaulu Bay and Ninini Point	21° 57.87' N	159° 19.85' W	Large rope cluster and nets.	✓		
73	10/11/01	Eastern shore between Hanamaulu Bay and Ninini Point	21° 57.77' N	159° 19.85' W	Large net cluster.	✓		
74	10/11/01	Eastern shore between Hanamaulu Bay and Ninini Point	21° 57.71' N	159° 19.84' W	Large net clusters south to lighthouse.	✓		
75	10/11/01	Eastern shore between Hanamaulu Bay and Ninini Point	21° 57.62' N	159° 19.87' W	Cluster of 3 big nets.	✓		
76	10/11/01	Eastern shore between Hanamaulu Bay and Ninini Point	21° 57.59' N	159° 19.89' W		✓		

**KAUAI NET REMOVAL PROJECT  
OPERATIONS SUMMARY**

EAST SHORE WORK AREA				GPS Position		Comments	Net Status	
Line Item	Date	Location	Latitude	Longitude	Removed		Not Removed	
77	10/10/01	Eastern shore between Hanamaulu Bay and Ninini Point	21° 57.54' N	159° 19.91' W		✓		
78	10/10/01	Eastern shore between Hanamaulu Bay and Ninini Point	21° 57.46' N	159° 19.99' W	Large net.	✓		
79	10/10/01	Ninini Point	21° 57.39' N	159° 20.13' W	Cluster of nets at base of lighthouse.	✓		
80	10/10/01	Nawiliwili Harbor breakwater	21° 56.90' N	159° 21.07' W	Corner of Nawiliwili Harbor breakwater. Net removed by On-Water Group.	✓		
81	10/10/01	Between Nawiliwili Harbor breakwater and Carter Point	21° 56.86' N	159° 20.92' W	Cluster of nets, large size bunches. 3 very large nets (~ 1 ton each) removed by On-Water Group.	✓		
82	10/14/01	South of Kawai Point	21° 55.77' N	159° 21.84' W	One small net remnant on shoreline.		✓	
83	10/14/01	Area of Kipu Kai	21° 54.40' N	159° 23.31' W	Some small clusters of nets on west end of Kipu Kai beach.		✓	
84	10/14/01	Vicinity of Mahulapu Point	21° 53.30' N	159° 25.05' W	Large net buried in the sand above tide and surge line. 2 large nets (~ 1/2 ton each) removed by On-Water Group.	✓		
85	10/14/01	Adjacent to Hyatt Hotel golf course	21° 52.73' N	159° 25.70' W	Net cluster on shoreline.			
86		Makahuena Point light	21° 52.13' N	159° 26.66' W	1 large net (~ 1 ton) removed by On-Water Group. South terminus of east shore work area.	✓		

ISLAND of UAI  
 Chart 19381\_1 (BSB Electronic Charts) Depth Units: FATHOMS AND FEET



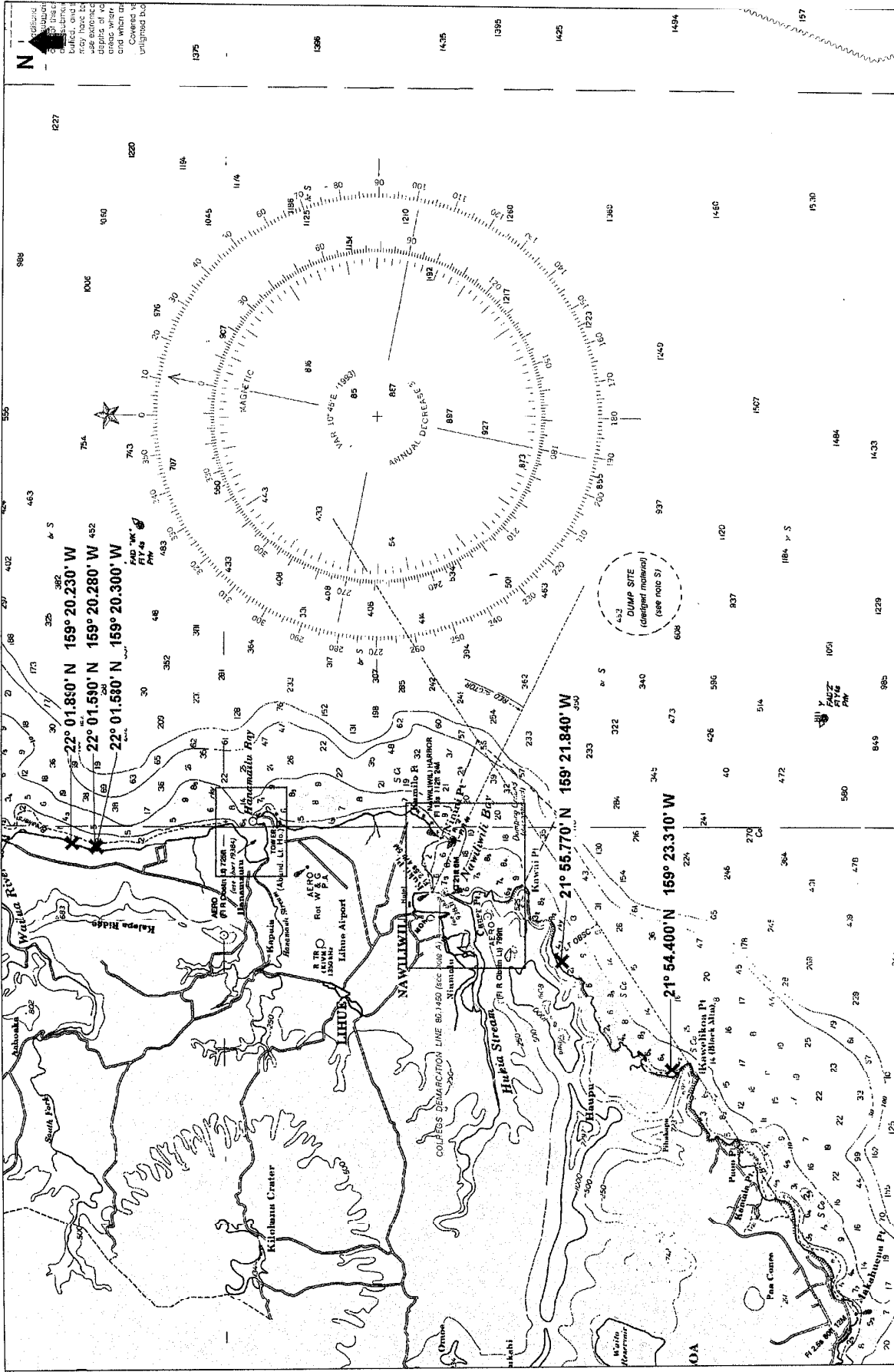
DO NOT USE FOR NAVIGATION PURPOSES  
 Printed by ChartView™ from Nautical Software (503) 579-1414

0 1 2 3 4  
 Nautical Miles

SUBMARIN  
 Cherted sal  
 cables end.



ISLAND OF HAWAII  
Chart 19381\_1 (BSB Electronic Charts) Depth Units: FATHOMS AND FEET.



DO NOT USE FOR NAVIGATION PURPOSES  
Printed by ChartView™ from Nautical Software (503) 579-1414

Nautical Miles

