

**ECOSYSTEM PLAN
UPPER MISSOURI, YELLOWSTONE, AND
UPPER COLUMBIA RIVER**

NOVEMBER 2000

TABLE OF CONTENTS

PURPOSE AND MISSION STATEMENT	1
MOYOCO ECOSYSTEM VISION	1
ECOSYSTEM DESCRIPTION AND MAP	1-3
GEOGRAPHIC FOCUS AREAS	
MOUNTAINS	
Vision	4
Resource Description	4
Goals and Objectives	5-7
PRAIRIES	
Vision	7
Resource Description	7
Goals and Objectives	7-9
RIVERS	
Vision	9
Resource Description	9
Goals and Objectives	10-12
OUTREACH AND EDUCATION FOR ENTIRE ECOSYSTEM AREA	
Vision	13
Goals and Objectives	13
FWS FIELD STATIONS WITHIN THE MOYOCO ECOSYSTEM	
National Wildlife Refuges	14
National Fish Hatcheries and Fisheries Offices	15
Ecological Services Offices	16
Law Enforcement Offices	17
Management Assistance Offices	18
Partners for Fish and Wildlife Offices	18
Realty Offices	18
Miscellaneous	18

APPENDIX A. POTENTIAL STAKEHOLDERS AND PARTNERS

Federal Agencies

Department of Interior

Bureau of Indian Affairs (BIA) 19
Bureau of Land Management (BLM) 19
Bureau of Reclamation (BOR) 19
National Park Service (NPS) 19
Office of Surface Mining (OSM) 20
U.S. Geological Survey (USGS) 20

Environmental Protection Agency (EPA) 20

Department of Agriculture

Animal and Plant Health Inspection Service (APHIS) 20
Farm Service Agency (FSA) 20
Forest Service (USFS) 20
Natural Resources Conservation Service (NRCS) 21

Department of Defense

Army Corps of Engineers (COE) 21

Department of Energy 21

Tribal Governments 21

State Agencies

Montana 21

Wyoming 22

Idaho 22

North Dakota 22

Local Government 23

Conservation Organizations 23

Private Sector 24

APPENDIX B. ECOSYSTEM DECISION MATRIX 25-27

APPENDIX C. SPECIES OF SPECIAL CONCERN

A. Animal Species of Special Concern 28-33

B. Plant Species of Special Concern 34-53

PURPOSE AND MISSION STATEMENT

The U.S. Fish and Wildlife Service (Service) has practiced an ecosystem approach to landscape and wildlife conservation from the first acquisition of Pelican Island National Wildlife Refuge to more recent efforts to protect endangered species. These efforts have been dedicated to the Service's mission: "to conserve, protect, and enhance the Nation's fish and wildlife and their habitats for the continuing benefit of the American people".

This document outlines a strategic plan of action for the Upper Missouri/Yellowstone/ Upper Columbia River (MOYOCO) ecosystem in accordance with Service ecosystem management policy. The plan establishes three geographic focus areas within the ecosystem, defines the Service's vision for each focus area, and sets specific goals and objectives. Timely accomplishment of the goals set forth in this plan are dependent upon both internal staff and financial resources, and the participation of partners. This plan also contains a decision matrix for the MOYOCO to provide guidance when opportunities to address natural resource issues arise within the ecosystem. The role of the MOYOCO Core Team is to lead the effort to accomplish the mission of the Service in the Upper Missouri, Yellowstone, and Upper Columbia watersheds.

This plan is a working document that will change over time as new information and technology becomes available or Service policy changes. At a minimum, the plan will be reviewed and revised as appropriate at least every five years.

MOYOCO ECOSYSTEM VISION:

The vision of the Ecoteam is a MOYOCO ecosystem in which: 1) natural, healthy ecological processes dominate; 2) threatened, endangered, and endemic species are protected; 3) recreational opportunities are enjoyed in a way compatible with resource protection; 4) economic development complements environmental protection; 5) decisions are based on the best available scientific data; 6) all stakeholders are involved in a collaborative decision-making process; 7) actions are guided by adaptive, flexible management and monitoring; and 8) partnerships are the norm.

ECOSYSTEM DESCRIPTION

The Upper Missouri/Yellowstone/Upper Columbia River ecosystem covers approximately 185,000 mi² in the northwestern interior of the U.S., encompassing Montana, northern Wyoming, and a small section of western North Dakota. The ecosystem lies within the Rocky Mountain and Great Plains physiographic provinces. The MOYOCO contains some of the wildest and most unpopulated country in the lower-48, including such significant protected areas as Yellowstone and Glacier National Parks, the Charles M. Russell NWR, the Bob

Marshall Wilderness, and the Upper Missouri River. Wildlife is abundant and diverse. Threatened and endangered species such as the grizzly bear, gray wolf, black-footed ferret, bull trout, pallid sturgeon, bald eagle, piping plover, least tern, and water howellia are actively protected and managed within the MOYOCO. Sitting astride the continental divide, the MOYOCO gives rise to both the Columbia and Missouri Rivers.

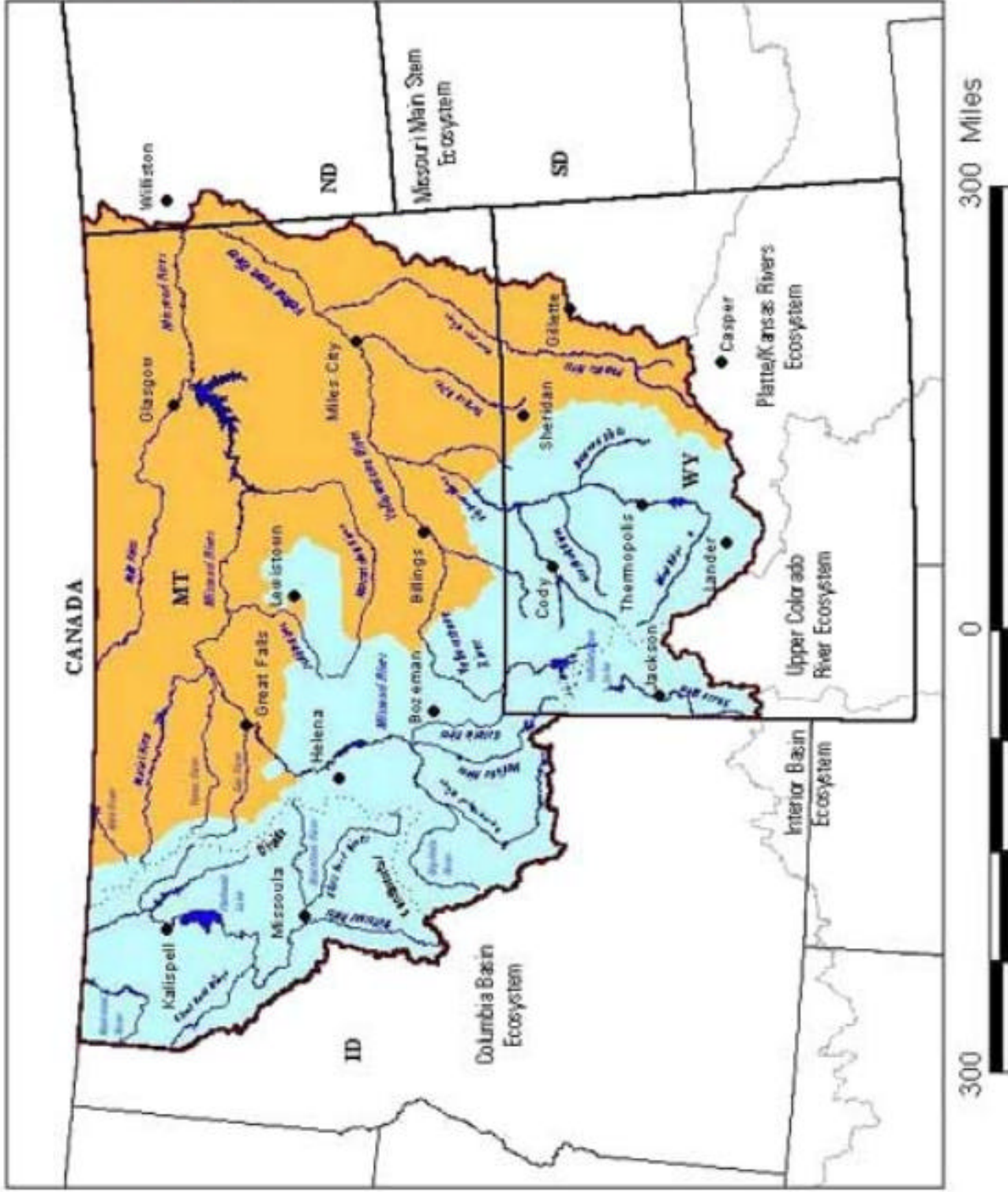
The diversity of the ecosystem extends also to its human population. The economy is based on agriculture and natural resource extraction. Tourism, drawn to the spectacular beauty of the landscape and the wealth of recreational opportunities, is a growing and important sector of the regional economy. Human pressures however are stressing an already fragile system. Habitat fragmentation, loss of native species, overgrazing, urban sprawl, loss of natural stream functions, and invasive species are some of the important threats faced within the MOYOCO.

As the name implies, the Upper Missouri/Yellowstone/Upper Columbia ecosystem includes the Upper Missouri, Yellowstone, and Upper Columbia River basins. To the east of the continental divide, the "MOYO" portion of the ecosystem encompasses the Upper Missouri and Yellowstone river drainages from their headwaters in the high mountains of western Montana and Wyoming to their confluence in western North Dakota. To the west of the continental divide in western Montana and northwestern Wyoming, the "CO" portion of the ecosystem encompasses the Upper Columbia river drainage from mountain headwaters to the border with Idaho. It should be noted that, in strict hydrologic terms, the Upper Columbia river lies within the Columbia Basin ecosystem administered by FWS Region 1. For a variety of political and practical reasons, however, the portion of the Upper Columbia basin falling within Montana has been included in the MOYOCO ecosystem as well. The MOYOCO and Columbia Basin Teams are working collaboratively to address issues in western Montana.

The MOYOCO ecosystem is bounded on the north by the Canadian provinces of British Columbia, Alberta, and Saskatchewan; on the east by North Dakota; on the south by southern Wyoming and Idaho; and on the west by Idaho. The MOYOCO ecosystem is the seventh largest in the Service (out of 53) with a total area of 117,951,188 acres or 184,302 mi².

Included within the ecosystem's boundaries are parts of two of North America's major physiographic provinces: the *Rocky Mountains* and the *Great Plains*.

MOYOCO Ecosystem



● Major Cities
 MOYOCO Ecosystem Boundary
 Major Rivers & Lakes
 Great Plains Province
 Rocky Mountain Province



Generalized biogeographic provinces derived from
 USFS ECOMAP (1994) classification system.
 Major rivers and lakes compiled from USGS
 1:100,000 DLO data. Ecosystem boundary provided
 by USFWS.

GEOGRAPHIC FOCUS AREAS

MOUNTAINS

Vision: Mountain habitats will be characterized by: valleys in which important habitat is protected, road systems that do not intrude on the productivity of the landscape, timber harvesting that provides for the needs of wildlife, important habitat that remains connected through protected linkages, fragile watersheds are protected, crucial seasonal ranges are protected, invasive species impacts are minimal, and recreation that is compatible with the protection of indigenous species.

Resource Description:

The Rocky Mountains extend in a belt about 200 mi. wide from the Canadian border south to the Wyoming border and beyond. They cover the western third of Montana and divide Wyoming from northwest to southeast. In several places east of this line isolated groups of low mountains rise above the general level of the plains.

Montana's Northern Rocky Mountain subdivision varies topographically. The majority of this region is classified as open mountains, a globally distinctive and very rare setting with high, detached mountain ranges separated by broad, smooth-floored valleys. These valleys range from about 3,000 to 5,000 ft. above sea level and are ringed by mountains that rise to elevations of 8,000 to 10,000 ft. Important valleys in this region include the Flathead/Mission, Bitterroot, Blackfoot, Deer Lodge, Helena, Beaverhead, Big Hole, Madison, and Gallatin. The surrounding highlands include the Beaverhead Mountains, Mission Range, Tobacco Root Mountains, Bridger Range, Big Belt Mountains, and Crazy Mountains.

The two prongs of Montana's Columbia Rockies, which include the highlands along the Montana-Idaho border from the Bitterroot Valley northward, and east of Flathead Lake, Glacier National Park, and the adjacent highlands on the south, contain classic mountain landscape. Here, individual ranges are closely spaced with narrow and restricted valleys. The Cabinet Mountains, Purcell Mountains, Whitefish, and Flathead ranges and the Lewis and Swan ranges are some of the landmark highlands within this rugged section of Montana's Northern Rockies. Interestingly, this mountain-dominated region claims the state's lowest elevation of 1,800 ft. above sea level, where the Kootenai River flows into Idaho.

The small section of the Middle Rocky Mountains in Montana consists of the high and rugged Absaroka and Beartooth ranges north of Yellowstone National Park and the Bighorn and Pryor Mountains to the east. Within this subdivision is Montana's highest

elevation, 12,799 ft., at Granite Peak.

In Wyoming, the Middle Rocky Mountains occupy the northwestern quarter of the state and include the Bighorn, Owl Creek, Gros Ventre, Wind River, Absaroka, and Teton ranges. The highest point in this region is Gannett Peak, in the Wind River Range. The Tetons are some of the most precipitous mountains on the North American continent, rising abruptly along a 40 mi. front near Wyoming's western border, with many peaks rising above 10,000 ft. The highest is the Grand Teton, rising 13,771 ft. In the northwestern corner of the state is world-famous Yellowstone National Park, a volcanic area containing about 3,000 hot springs and geysers and cut deeply by the Grand Canyon of the Yellowstone River. East of the park lies the sheltered, mountain-ringed Bighorn Basin.

The Wyoming Basins, in central Wyoming, comprise a high arid plateau ringed by mountains, except on the northeast, where the region opens out on the Great Plains through a broad gap between the Southern and Middle Rocky Mountains. The basins together cover a somewhat larger area of the state than the Great Plains. General elevations range from 6,000 to 7,500 ft. The region is actually a series of basins broken up by low ridges and deep canyons carved by millions of years of erosion. The basins are drained northward by the Bighorn River, eastward by the North Platte River, and southward by the Green River.

The Continental Divide passes through the Wyoming Basins, but it splits west of Rawlins. The two arms of the Divide come together again near the Wind River Mountains, forming the Great Divide Basin. Water in the Great Divide Basin flows to a series of salt flats and ponds in an area known as the Chain-of-Lakes, not to the Atlantic or Pacific oceans. The Continental Divide is essentially treeless in this area, dominated by native shrubs such as sagebrush, greasewood, and saltbush. North America's largest area of active sand dunes occurs in the region, extending in a linear pattern from northeast of Rock Springs across the Great Divide Basin to south of the Ferris Mountains north of Rawlins.

Mountains Goal 1: Work with agencies and partners to prevent or reduce the impacts of human-caused activities on endemic species from roads, timber harvesting, grazing, mining, the spread of invasive species, and recreation.

Objectives:

Create management linkage with other agencies and partners.

Use existing opportunities with partners to protect and enhance at least 2500 surface acres of wetlands, 30 miles of riparian habitat, and 13,000 acres of uplands on non-Federal lands (70% in MT, 30% in WY) by 2015.

Mountains Goal 2: Identify the fragile mountain watersheds in which the Service has a trust responsibility.

Objectives:

Identify fragile watersheds by 2001. Develop one watershed plan by 2002.

Mountains Goal 3: Restore, enhance and protect the integrity of lakes and montane wetlands.

Objectives:

Promote completion of National Wetland Inventory mapping and digitization in the ecosystem by 2003.

Develop a strategy for prioritizing protection efforts within a year after mapping.

Protect and/or restore 14,500 acres of wetlands and adjacent uplands by 2010 (90% in MT, 10% in WY).

Mountains Goal 4: Work with agencies and partners to reduce habitat fragmentation. Protect, restore, and enhance habitat connectivity between large blocks of wildlife habitat.

Objectives:

Identify and prioritize those areas with significant connectivity problems.

Identify the top three areas suffering from poor habitat connectivity and develop strategies to link these areas and prevent further fragmentation.

Working with partners, protect 500,000 acres of land identified as being critical to maintaining connectivity between large blocks of habitat by 2010 (90% in MT, 10% in WY).

Work with the Realty program to develop a strategy to protect foothills and river corridors in the mountainous areas of Wyoming.

Mountains Goal 5: Conserve and recover threatened and endangered species and species of special concern in mountain areas.

Objectives:

Implement conservation strategies and recovery plan actions.

Analyze data to identify highest leverage/overlap areas to focus recovery efforts (i.e.

GAP) by 2003.

Mountain Goal 6: Support recreational activities compatible with Service goals in mountains.

Objective:

Use the consultation process to encourage recreational activities on Service lands that are compatible with trust responsibilities and discourage incompatible recreational activities.

PRAIRIES

Vision: Healthy native prairie ecosystems that provide an abundance and diversity of indigenous flora and fauna.

Resource Description

Within the MOYOCO ecosystem, the eastern two-thirds of Montana, western North Dakota, and eastern Wyoming are characterized by the Great Plains province. In Montana, the region east of the continental divide is known as the Missouri Plateau. It is divided into two segments, the glaciated northern section and the unglaciated section to the south. Both sections are predominantly short grass prairie that are flat to gently rolling. Generally the north one third has areas of prairie potholes and lakes while the unglaciated south is somewhat drier and flatter. The general elevation of the Great Plains decreases from about 4,000 ft. in the mountain foothills in the west to about 2,000 ft. in western North Dakota. Rising above the plains surface are several prominent Rocky Mountain outliers, the Sweetgrass Hills, the Bear Paw Mountains, the Little Rockies, the Highwood Mountains, the Judith Mountains, and the Little Snowy and Big Snowy mountains. Similarly in Wyoming, the Great Plains grasslands characterize most of the eastern third of the state in a strip that broadens from south to north. It is an upland plateau, generally undulating, and in places broken by rough topography, low hills, and isolated buttes. In both states, Great Plains grasslands include areas of short-grass prairie, mixed-grass prairie, and grasslands with a substantial sagebrush component.

Over thousands of years, most of the streams and rivers in this region have cut valleys below the level of the plains. Along the Upper Missouri River and in the southeastern section, an irregular “badland” topography has been created by water and wind erosion.

Prairies Goal 1: Prevent degradation of native prairie grassland and the conversion to cropland.

Objectives:

Work with partners to increase the protection of grassland by easement on 500,000 acres by 2010 (90% in MT, 10% in WY).

Develop a grassland restoration and enhancement program to address grassland conservation south and east of the Yellowstone River within the MOYOCO.

Strengthen the grassland conservation provisions of the 2002 Farm Bill.

Develop Preliminary Project Proposals (PPPs) to pursue LWCF/CARA funding for a Montana grassland easement program by 2002.

Work with partners to identify contaminants entering native prairie by 2003. Develop a plan to address contaminants issues.

Prairies Goal 2: Establish and maintain a network of large blocks of native and planted grasslands on public and private lands.

Objectives:

Promote and implement habitat techniques such as prescribed burning and managed grazing on a minimum of 10% of private lands to enhance and manage healthy native prairie.

By 2010, develop partnerships to reduce the extent, and curtail the impact of invasive species in native prairie.

Manage Service lands to achieve objectives developed in specific management plans per Service policy.

By 2002, identify and implement actions to protect key landscape corridors linking blocks of priority native prairie habitat.

By 2002 identify the key areas in the ecosystem to restore perennial grasslands, maintain, and/or increase planted grasslands with an emphasis on native species restoration.

Prairies Goal 3: Protect, conserve, restore and enhance endemic species and species of special concern.

Objectives:

By 2001, identify, and by 2010, conserve the most biologically significant landscape to meet the needs of black-footed ferrets, prairie dogs, mountain plover, Yellowstone

cutthroat trout, and other species of special concern.

By 2001, identify species that are declining and the reasons for the decline. By 2002 incorporate this information into GIS for analysis. Create and maintain the list of declining species on a continuing basis. For example: protect and enhance sagebrush habitats to forestall the decline of sage sparrows.

Develop management actions for species not covered at the landscape level.

Develop state-wide partnerships to involve people in species and grassland conservation.

Protect and enhance sagebrush habitats to forestall the decline of indigenous species such as sage sparrows, sage thrashers, and other migratory passerine species and cooperate with other agencies and interests in preventing the sage grouse from becoming listed as a threatened or endangered species.

Restore and create wetland basins for wetland related species.

Support and promote established recovery plans.

Prairies Goal 4: Support recreational activities on native prairie that are compatible with the Service's trust responsibilities.

Objectives:

Address recreational activities on public lands through the consultation process to ensure compatibility with Service trust responsibilities.

Use education and outreach to raise the public's awareness of the impacts of certain recreational activities on private grasslands.

RIVERS

Vision: River and stream systems that function in a natural state and provide for a diversity of flora and fauna.

Resource Description

Within the MOYOCO ecosystem in Montana, the two main river systems are the Missouri River and its tributaries, which flow east to the Mississippi River, and tributaries of the Columbia River, which flow west into the Pacific Ocean.

Trending southward across the western part of Montana, the Continental Divide separates the state's two major watersheds. West of this continental backbone are the Clark Fork and the Kootenai River, important tributaries of the Columbia River. The Clark Fork has as its primary tributaries the Flathead, Blackfoot, and Bitterroot rivers. The Kootenai River rises in Canada and crosses a small area in northwestern Montana.

The Missouri and its major tributary, the Yellowstone River, are the principal rivers in eastern Montana. The Missouri begins at the confluence of the Gallatin, Madison, and Jefferson rivers, near the town of Three Forks. Other tributaries below Three Forks include the Sun, Teton, Marias, Smith, Judith, Musselshell, and Milk rivers. The Yellowstone rises south of Yellowstone National Park in Wyoming, flows north into Montana and diagonally across the southeastern part of the state before joining the Missouri in North Dakota just east of the Montana state line. Main tributaries are the Clarks Fork of the Yellowstone, the Bighorn, the Tongue, and the Powder rivers, all of which also originate in Wyoming.

A tiny area of northwestern Montana is drained by the Belly, Saint Mary, and Waterton Rivers, which, rising in Glacier National Park, flow northeast out of the state and into the Saskatchewan River in Canada. Their waters eventually reach Hudson Bay. Hydrologically, this area lies outside the MOYOCO proper, but for practical reasons is considered a part of the ecosystem.

The area covered by the MOYOCO ecosystem in Wyoming is the source of water for three main drainage systems in the western United States: the Missouri-Mississippi; the Great Basin; and the Columbia. Rivers joining the Missouri include the Yellowstone, Bighorn, Powder, Wind, and Belle Fourche rivers, which flow north. Northwestern Wyoming is drained by the Snake River, a major tributary of the Columbia.

The MOYOCO has numerous lakes and reservoirs. In Montana, most of the natural lakes are in the mountains of the western third of the state. Flathead Lake, with an area of 191 mi², is Montana's largest lake, and the largest natural freshwater lake in the contiguous states west of the Mississippi River. In Wyoming, the largest natural lake and probably the largest at its altitude (7,733 ft.) anywhere in the United States is Yellowstone Lake, which covers an area of 131 mi² and has a maximum depth of 320 ft. Just to the south lies the second largest lake in Wyoming, Jackson Lake, with an area of about 40 mi². Jackson Lake has been enlarged by a dam on the Snake River. Some of Wyoming's reservoirs are of impressive size and include the Pathfinder, Seminoe, Glendo, and Boysen reservoirs.

Rivers Goal 1: Maintain, and re-establish where needed the natural form and function of riverine systems and prevent degradation of riverine habitat.

Objectives:

Work with the partners to achieve water quality standards that are ecologically beneficial.

By 2001, initiate work with local zoning authorities and regulators to develop and implement policies that reduce floodplain development and restore river functions.

Increase functional riverine habitat through restorations, creations, and modification/enhancement where opportunities allow. Attempt 12 projects per year, six in Montana and six in Wyoming, beginning in 2000.

Work with partners to monitor environmental contaminants, identify issues and problem areas, and develop strategies for rehabilitation.

Identify and eliminate fish migration barriers and minimize entrainment losses.

Maintain and restore natural ecological conditions through the prevention and eradication of invasive species.

Rivers Goal 2: Conserve and recover threatened, endangered, proposed, and species of special concern in riverine and impounded reaches.

Objectives:

Implement recovery efforts for threatened, endangered, proposed, and sensitive fish species. Work towards achieving recovery plan objectives within the ecosystem

Develop recovery actions or conservation plans for native and imperiled riverine species.

Establish priority and complete status reviews for species of special concern, initiating one species per year beginning in 2001.

Maintain and improve inventory data with partners for endangered, threatened, proposed, and species of special concern in the ecosystem by 2001 to provide baseline information.

Rivers Goal 3: Fulfill responsibilities for protection, mitigation, and enhancement of fishery and wildlife resources brought about by the construction and operation of dams.

Objective:

Support conservation efforts for native species through fish culture, management, and

conservation within the ecosystem

Rivers Goal 4: Maintain, restore, and enhance riparian communities.

Objectives:

Inventory and determine the quality of riparian habitats within the ecosystem to provide preliminary baseline information. Support and use FWS National Wetland Inventory riparian mapping system to conduct habitat assessments.

Use existing programs and opportunities to restore and enhance river buffer zones on ten percent of the 100-year flood plain on selected river systems by 2010.

Use existing programs and opportunities to restore and enhance 1,500 acres of oxbow wetlands by 2010 (50% MT, 50% WY).

Support State and Tribal efforts to monitor water quality and biotic communities to promote compliance with Federal water quality standards.

Protect and restore vegetative communities on riverine systems.

Rivers Goal 5: Conserve, restore, and enhance habitat in watersheds to improve the quality and quantity of water in rivers and streams.

Objectives:

Use existing oversight, coordination, and technical assistance to promote sound watershed management. Prioritize watersheds and establish strategies for promoting watershed management.

Use existing programs and opportunities to conserve, enhance, and restore upland, wetland, and riparian habitat in riverine corridors to improve runoff quality and quantity.

Rivers Goal 6: Support educational and recreational activities in riverine systems that are compatible with resource protection and the Service's trust responsibilities.

Objective:

Address recreational activities on public lands through the consultation process to ensure compatibility with Service trust responsibilities.

Use education and outreach to raise the public's awareness of the impacts of certain recreational activities in riverine environments.

OUTREACH AND EDUCATION FOR ENTIRE ECOSYSTEM AREA

Vision: Improve public knowledge of native species and their habitats and the Service's mission related to those species.

Goal 1: Develop an outreach plan for the Service in the MOYOCO Ecosystem.

Objectives:

Establish an Outreach Subcommittee of the MOYOCO Ecoteam to develop a plan focusing on cross-cutting issues. Initiate work by 2002.

FWS Field Stations within the MOYOCO Ecosystem

National Wildlife Refuges

Benton Lake

Project Leader
922 Bootlegger Trail
Great Falls, MT 59404-6133
(406) 727-7400 O
(406) 727-7432 fax
R6RW_BNL

Bowdoin

Refuge Manager
HC 65, Box 5700
Malta, MT 59538
(406) 654-2863 O
(406) 654-2866 fax
R6RW_BWD

Charles M. Russell

Project Leader
P.O. Box 110
Lewistown, MT 59457
(406) 538-8706 O
(406) 538-7521 fax
R6RW_CMRR

Lee Metcalf

Project Leader
P.O. Box 247
Stevensville, MT 59870
(406) 777-5552 O
(406) 777-4344 fax
R6RW_LMC

Lost Trail

Asst. Refuge Manager
6900A Pleasant Valley Road
Marion, MT 59925
(406) 858-2216 O (406)858-2218 fax

Medicine Lake

Project Leader
223 North Shore Road
Medicine Lake, MT 59247-9600
(406) 789-2305 O
(406) 789-2350 fax
R6RW_MDL

National Bison Range

Project Leader
132 Bison Range Road
Moiese, MT 59824
(406) 644-2211 O
(406) 664-2661 fax
R6RW_NBR

Red Rock Lakes

Project Leader
Monida Star Route, Box 15
Lima, MT 59739
(406) 276-3536 O
(406) 276-3538
R6RW_RRL

National Elk Refuge

Project Leader
P.O. Box 510
Jackson, WY 83001-0510
(307) 733-9212 O
(307) 733-9729 fax
R6RW_NER

National Fish Hatcheries and Fisheries Offices

Bozeman Fish Health Center
Project Leader
920 Technology Boulevard, Suite G
Bozeman, MT 59718
(406) 582-8656 O
(406) 587-3998 fax
R6FFA_FHC

Bozeman Fish Technology Center
Center Director
4050 Bridger Canyon Road
Bozeman, MT 59715-8713
(406) 587-9265 O
(406) 586-5942 fax
R6FFA_BOZ

Creston Fish and Wildlife Center
Acting Hatchery Manager
780 Creston Hatchery Road
Kalispell, MT 59901
(406) 758-6868 O
(406) 758-6877 fax
R6FFA_CRE

Ennis National Fish Hatchery
Project Leader
180 Fish Hatchery Road
Ennis, MT 59729
(406) 682-4847 O
(406) 682-7635 fax
R6FFA_ENN

Jackson National Fish Hatchery
Project Leader
1500 Fish Hatchery Road
Jackson, WY 83001
(307) 733-2510 O
(307) 733-8616 fax
R6FFA_JAC

Saratoga National Fish Hatchery
Project Leader
P.O. Box 665
Saratoga, WY 82331
(307) 326-5662 O
(307) 326-9869 fax
R6FFA_SAR

Ecological Services Offices

Helena ES Office
Field Supervisor
100 North Park, Suite 320
Helena, MT 59601
(406) 449-5225 O
(406) 449-5339 fax
R6FWE_HEL

Billings ES Suboffice
Wildlife Biologist
2900 4th Avenue N., Room 301
Billings, MT 59101-1228
(406) 247-7366 O
(406) 247-7364
R6FWE_BIL

Grizzly Bear Recovery Office
Grizzly Bear Coordinator
University Hall, Room 309
University of Montana
Missoula, MT 59812
(406) 243-4903 O
(406) 329-3212 fax
R6FWE_MIS

Kalispell ES Suboffice
Senior Fish and Wildlife Biologist
Creston Fish and Wildlife Center
780 Creston Hatchery Road
Kalispell, MT 59901
(406) 758-6883 O
(406) 758-6877 fax
R6FFA_CRE

Cheyenne ES Office
Field Supervisor
4000 Airport Parkway
Cheyenne, WY 82001
(307) 772-2374 O
(307) 772-2358 fax
R6FWE_CHE

Cody ES Office
Fish & Wildlife Biologist
c/o BLM Office
P.O. Box 518
Cody, WY 82414
(307) 587-2216 O
(307) 527-7116 fax
R6FWE_CHE

National Black-Footed Ferret
Conservation Center (NBFCC)
410 E. Grand Avenue, Suite 315
Laramie, WY 82073
(307) 721-8805 O
(307) 742-4226 fax
R6FWE_LAR

Law Enforcement Offices

Billings Office

Senior Resident Agent
P.O. Box 30396
2900 4th Avenue North, Room 300
Billings, MT 59107
(406) 247-7355 O
(406) 247-7357 fax
R6LE_Billings

Bozeman Office

Special Agent
Martel Professional Center
220 W. Lamme, Suite 1C
Bozeman, MT 59715
(406) 582-0336 O
(406) 582-0343 fax

Great Falls Office

Special Agent
P.O. Box 3172
3rd Street South, Room 207
Great Falls, MT 59402-3172
(406) 453-5790 O
(406) 453-3657 fax

Missoula Office

Special Agent
P.O. Box 7488
Federal Building
200 E. Broadway, Room 136
Missoula, MT 59807-7488
(406) 329-3000 O
(406) 329-3151 fax

Casper Office

Senior Resident Agent
P.O. Box 113
100 East B. Street
Federal Building, Room 4130
Casper, WY 82602
(307) 261-6365 O
(307) 261-6366 fax
R6LE_Casper

Cody Office

Special Agent
P.O. Box 516
514 Date Street, #3
Cody, WY 82414-9998
(307) 527-7604 O
(307) 527-6624 fax

Lander Office

Special Agent
P.O. Box 570
190 N. 1st Street
Lander, WY 82520
(307) 332-7607 O
(307) 332-6920 fax

Management Assistance Offices

Montana Fish and Wildlife
Management Assistance Office
Project Leader
4052 Bridger Canyon Road
Bozeman, MT 59715
(406) 585-9010 O
(406) 586-6798 fax
R6FFA_MON

Lander Fish and Wildlife Management
Assistance Office
Project Leader
170 North First Street
Lander, WY 82520
(307) 332-2159 O
(307) 332-9857 fax
R6FFA_LAN

Partners for Fish and Wildlife Offices

Montana Wildlife Habitat Office
State Coordinator
Benton Lake NWR
922 Bootlegger Trail
Great Falls, MT 59404-6133
(406) 727-7400 x-24 O
(406) 727-7432 fax
R6RW_BNL

Wyoming Wildlife Habitat Office
State Coordinator
Lander Fish and Wildlife Management
Assistance Office
170 North First Street
Lander, WY 82520
(307) 332-8719 O
(307) 332-9857 fax
R6FFA_LAN

Partners for Fish & Wildlife
Private Lands Biologist
Creston Fish and Wildlife Center
780 Creston Hatchery Road
Kalispell, MT 59901
(406) 758-6880 O
(406) 758-6877 fax
R6FFA_CRE

Realty Offices

Montana Realty Office
State Coordinator
Benton Lake NWR
922 Bootlegger Trail
Great Falls, MT 59404-6133
(406) 727-7400 x-25 O
(406) 727-7432 fax
R6RW_BNL

Miscellaneous

Missouri River Coordinator
ND Wetland Habitat Office
3425 Miriam Avenue
Bismarck, ND 58501
(701) 250-4418 O
(701) 250-4412 fax
R6RW_BIS

Appendix A. Potential Stakeholders and Partners

Federal Agencies

Department of Interior

Bureau of Indian Affairs (BIA)

- ! Billings Area Office, Area Director, Billings, MT
- ! Blackfeet Agency, Superintendent, Browning, MT
- ! Crow Agency, Superintendent, Crow Agency, MT
- ! Flathead Agency, Superintendent, Pablo, MT
- ! Ft. Belknap Agency, Superintendent, Harlem, MT
- ! Ft. Peck Agency, Superintendent, Poplar, MT
- ! Northern Cheyenne Agency, Superintendent, Lama Deer, MT
- ! Rocky Boy's Field Office, Field Representative, Box Elder, MT
- ! Wind River Agency, Superintendent, Ft. Washakie, WY

Bureau of Land Management (BLM)

- ! Montana/Dakotas State Office, State Director, Billings, MT
- ! 7 Montana Field Offices in Billings, Butte, Dillon, Lewistown, Malta, Miles City, and Missoula, MT
- ! Wyoming State Office, State Director, Cheyenne, WY
- ! 10 Wyoming Field Offices in Buffalo, Casper, Cody, Kemmerer, Lander, Newcastle, Pinedale, Rawlins, Rock Springs, and Worland, WY
- ! Idaho State Office, State Director, Boise, ID
- ! North Dakota Field Office, ND

Bureau of Reclamation (BOR)

- ! Great Plains Region, Regional Director, Billings, MT
- ! Pacific Northwest Region, Regional Director, Boise, ID
- ! Upper Colorado Region, Regional Director, Salt Lake City, UT
- ! Montana Area Office, Water Resources Services, Billings, MT

National Park Service (NPS)

- ! Intermountain Region, Regional Director
- ! Pacific West Region, Regional Director
- ! Bear Paw Battleground, Superintendent, Chinook, MT
- ! Big Hole NB, Superintendent, Wisdom, MT
- ! Bighorn Canyon NRA, Superintendent, Ft. Smith, MT
- ! Glacier NP, Superintendent, West Glacier, MT
- ! Grant-Kohrs Ranch NHS, Superintendent, Deer Lodge, MT
- ! Little Bighorn Battlefield NM, Superintendent, Crow Agency, MT
- ! Grand Teton NP, Superintendent, Moose, WY
- ! Yellowstone NP, Superintendent, Yellowstone, WY

Office of Surface Mining (OSM)

- ! Western Regional Coordinating Center, Regional Director, Denver, CO
- ! Montana State Regulatory Authority, Administrator, Helena, MT
- ! Wyoming State Regulatory Authority, Director, Cheyenne, WY

U.S. Geological Survey (USGS)

- ! Western Region, Regional Director, Seattle, WA
- ! Biological Resource Division, Chief Biologist, Seattle, WA
- ! Montana Cooperative Fishery Research Unit, Unit Leader, Bozeman, MT
- ! Montana Cooperative Wildlife Research Unit, Unit Leader, Missoula, MT
- ! Wyoming Cooperative Fishery and Wildlife Research Unit, Unit Leader, Laramie, WY
- ! Wildlife Spatial Analysis Lab (GAP), Lab Director, Missoula, MT
- ! Montana State Office, State Representative, Helena, MT
- ! Wyoming State Office, State Representative, Cheyenne, WY
- ! Northern Prairie Wildlife Research Center, Director, Jamestown, ND
- ! Midcontinent Ecological Service Center, Ft. Collins, CO
- ! Northern Rocky Mountain Science Center, Director, Bozeman, MT
- ! Patuxent Wildlife Research Center, Director, Laurel, MD

Environmental Protection Agency (EPA)

- ! Region 8, Regional Director, Denver, CO
- ! Montana Operations Office, Director, Helena, MT

Department of Agriculture

Animal and Plant Health Inspection Service (APHIS)

- ! Western Region, Regional Director, Wildlife Services, Lakewood, CO
- ! Montana State Office, Director, Wildlife Services, Billings
- ! Wyoming State Office, Director, Wildlife Services, Casper, WY

Farm Service Agency (FSA)

- ! Montana State Office, Executive Director, Bozeman, MT
- ! Wyoming State Office, Executive Director, Casper, WY
- ! Numerous County Offices

Forest Service (USFS)

- ! Northern Region, Regional Forester, R1, Missoula, MT
- ! Beaverhead National Forest, Forest Supervisor, Dillon, MT
- ! Bitterroot National Forest, Forest Supervisor, Hamilton, MT
- ! Custer National Forest, Forest Supervisor, Billings, MT
- ! Deerlodge National Forest, Forest Supervisor, Dillon, MT
- ! Flathead National Forest, Forest Supervisor, Kalispell, MT
- ! Gallatin National Forest, Forest Supervisor, Bozeman, MT
- ! Helena National Forest, Forest Supervisor, Helena, MT
- ! Kootenai National Forest, Forest Supervisor, Libby, MT
- ! Lewis and Clark National Forest, Forest Supervisor, Great Falls, MT

- ! Lolo National Forest, Forest Supervisor, Missoula, MT
- ! Rocky Mountain Region, Regional Forester, R2, Lakewood, CO
- ! Bighorn National Forest, Forest Supervisor, Sheridan ,WY
- ! Bridger-Teton National Forest, Forest Supervisor, Jackson, WY
- ! Medicine Bow-Routt National Forest, Forest Supervisor, Laramie, WY
- ! Thunder Basin National Grassland, Forest Supervisor, Laramie, WY
- ! Shoshone National Forest, Forest Supervisor, Cody, WY

Natural Resources Conservation Service (NRCS)

- ! Northern Plains Region, Regional Conservationist, Lincoln, NE
- ! Montana State Office, State Conservationist, Bozeman, MT
- ! Wyoming State Office, State Conservationist, Casper, WY
- ! Numerous Field Offices
- ! 17 Natural Resource Teams

Department of Defense

- ! Army Corps of Engineers, Northwestern Division, Commander/Division Engineer, Portland, OR
- ! Army Corps of Engineers, Omaha District, Commander, Omaha, NE
- ! Army Corps of Engineers, Montana Field Office, Helena, MT
- ! Army Corps of Engineers, Wyoming Field Office, Cheyenne, WY

Department of Energy

- ! Bonneville Power Administration, Chief Executive Officer, Portland, OR
- ! Western Area Power Administration, Upper Great Plains Region, Regional Manager, Billings, MT

Tribal Governments

- ! Assiniboine and Sioux Tribes, Chairman, Poplar, MT
- ! Blackfeet Tribe, Chairman, Browning, MT
- ! Chippewa-Cree Tribe, Chairman, Box Elder, MT
- ! Crow Tribe, Chairman, Crow Agency, MT
- ! Gros Ventre and Assiniboine Tribes, Chairman, Harlem, MT
- ! Northern Arapaho Tribe, Chairman, Ft. Washakie, WY
- ! Northern Cheyenne Tribe, President, Lame Deer, MT
- ! Confederated Salish and Kootenai Tribes, Chairman, Pablo, MT
- ! Shoshone Tribe, Chairman, Washakie, WY
- ! Intertribal Prairie Dog Consortium
- ! Montana/Wyoming Tribal Fish and Game Commission

State Agencies

Montana

- ! State of Montana, Governor, Helena

- ! Montana Bureau of Mines and Geology, State Geologist, Butte
- ! Montana Department of Agriculture, Director, Helena
- ! Montana Department of Commerce, Director, Helena
- ! Montana Department of Environmental Quality, Director, Helena
- ! Montana Department of Fish, Wildlife, and Parks, Director, Helena
- ! Montana Fish, Wildlife, and Parks Commission, Chairman, Great Falls
- ! Montana Department of Livestock, Director, Helena
- ! Montana Department of Natural Resources and Conservation, Director, Helena
- ! Montana Department of Transportation, Director, Helena
- ! Montana Reserved Water Rights Compact Commission, Chairman, Helena
- ! Montana State Library, Natural Resource Information System, Director,
- ! Montana State University, President, Bozeman
- ! University of Montana, President, Missoula

Wyoming

- ! State of Wyoming, Governor, Cheyenne
- ! Wyoming Department of Agriculture, Director, Cheyenne
- ! Wyoming Department of Commerce, Director, Cheyenne
- ! Wyoming Department of Environmental Quality, Director, Cheyenne
- ! Wyoming Game and Fish Department, Director, Cheyenne
- ! Wyoming Game and Fish Commission, President, Cheyenne
- ! Wyoming Department of State Parks and Cultural Resources, Director, Cheyenne
- ! Wyoming Natural Diversity Database, Laramie
- ! Wyoming Office of Federal Land Policy, Director, Cheyenne
- ! Wyoming Office of State Lands and Investments, Director, Cheyenne
- ! Wyoming Oil and Gas Conservation Commission, Director, Casper
- ! Wyoming State Engineer, Cheyenne
- ! Wyoming State Forestry Department, Director, Cheyenne
- ! Wyoming Water Development Commission, Director, Cheyenne

Idaho

- ! State of Idaho, Governor, Boise
- ! Idaho Department of Fish and Game, Director, Boise
- ! Idaho Fish and Game Commission, 7 Commissioners
- ! Idaho Department of Lands, State Forester, Boise
- ! Idaho Department of Parks and Recreation, Chairman, Kimberly
- ! Idaho Department of Water Resources, Director, Boise
- ! Idaho Division of Environmental Quality, Director, Boise
- ! Idaho Geological Survey, University of Idaho, Moscow
- ! Idaho Rangeland Resource Commission, Chairwoman, Weiser

North Dakota

- ! State of North Dakota, Governor, Bismarck
- ! North Dakota Game and Fish Department, Director, Bismarck
- ! North Dakota Geological Survey, State Geologist, Bismarck
- ! North Dakota State Land Department, Bismarck

- ! North Dakota Parks and Recreation Department, Coordinator, Bismarck
- ! North Dakota State Forest Service, State Forester, Bottineau
- ! North Dakota State Water Commission, State Engineer, Bismarck

Local Government

- ! Conservation District Boards
- ! County Commissioners
- ! County Extension Agents
- ! Citizens Groups

Conservation Organizations

- ! American Fisheries Society - MT, ID, ND, and WY Chapters
- ! American Rivers
- ! Audubon Society
- ! Boone and Crockett Club
- ! Defenders of Wildlife
- ! Ducks Unlimited
- ! Fish and Wildlife Foundation
- ! Greater Yellowstone Coalition
- ! Intertribal Bison Cooperative
- ! Montana Environmental Education Association
- ! Montana Interagency GIS Technical Working Group
- ! Montana Land Reliance
- ! Montana Riparian Association
- ! Montana Stockgrowers Association
- ! Montana Watershed Coordination Council
- ! Montana Wetland Council
- ! Montana Wilderness Association
- ! Montana Wildlife Federation
- ! Montana Woolgrowers Association
- ! National Wildlife Federation
- ! Native Action
- ! Native American Fish and Wildlife Society
- ! Natural Heritage Programs - MT, ND, and WY
- ! Northern Plains Resource Council
- ! Pheasants Forever
- ! Pope and Young Club
- ! Powder River Resources Council
- ! Rocky Mountain Elk Foundation
- ! Safari Club International
- ! Sierra Club
- ! The Nature Conservancy
- ! The Wilderness Society
- ! The Wildlife Society - MT, ID, ND, and WY Chapters
- ! Trout Unlimited - Montana State Council

- ! Walleyes Unlimited
- ! Wyoming Outdoor Council
- ! Yellowstone River Forum

Private Sector

- ! Montana Power Company
- ! Montana RailLink
- ! PP&L Power, MT
- ! Plum Creek Timber Company
- ! Washington Corporation
- ! Burlington Northern Santa Fe Railroad
- ! Interested Citizens and Landowners

Appendix B. MOYOCO Ecosystem Decision Matrix

Criteria

1) Threatened and endangered species. 15 Points Maximum

The intent of this criteria is to give more weight to proposals demonstrating a direct benefit to the greatest number of imperiled species, those species that are in greatest need of assistance, and proposals that move the species towards recovery.

Species Status

Endangered:	5 points	*	# of endangered species	=
Threatened:	3 points	*	# of threatened species	=
Proposed:	2 points	*	# of proposed species	=
Candidate:	1 point	*	# of candidate species	=

2) Migratory Birds. 15 Points Maximum

Provides habitat for raptors:	3 points
Provides habitat for passerines:	3 points
Provides habitat for ducks, geese, and swans:	3 points
Provides habitat for shorebirds and other wetland obligate species:	3 points
Provides habitat for 3 or more of the migratory bird groups above:	3 points

3) Large, Intact Landscapes. 15 Points Maximum

Large tract of land or potential acres impacted:

> 5000 acres:	5 points
1000 - 5000 acres:	3 points
< 1000 acres:	1 point

Land adjoining or expanding upon areas already protected (i.e. subject to state and/or federal resource protection laws): 3 points

Disturbance/Restoration Potential:

Little to no disturbance (pristine):	4 points
Slight disturbance (easily restored):	3 points
Moderate disturbance (moderate restoration required):	2 points
Significant restoration required:	1 point
Heavily disturbed (can not be restored):	0 points

Lands that create corridors linking priority habitats: 3 points

4) Fisheries. 15 Points Maximum

High quality habitat present:	5 points
Habitat capable of being restored:	4 points
Presence of indigenous species:	3 points
Absence of non-native or invasive species:	3 points

5) Degree and Immediacy of Threats. 15 Points Maximum

This criteria measures the immediacy as well as the potential degree and extent of threats facing a particular resource.

Degree of Threat:		Immediacy of Threat:	
High degree of threat:	8 points	Immediate and imminent action pending:	7 points
Medium degree of threat:	5 points	Moderate chance of impending action:	4 points
Low degree of threat:	2 points	Slight chance of impending action:	1 point

6) Good Opportunities. 10 Points Maximum

Ten or more partners:	Yes / No
Identified as a "Focus Area" by NGO or other agency:	Yes / No
At least a 3:1 non-FWS match available:	Yes / No
Watershed group in place:	Yes / No
Defined and measurable objectives:	Yes / No
Multiple native species benefits:	Yes / No

Excellent (6 of 6 criteria met):	10 points
Very Good (5 of 6):	7 points
Good (4 of 6):	5 points
Fair (3 of 6):	3 points
Poor (2 or less):	1 point

7) Likelihood of Achieving Objective(s) as Defined in MOYOCO Plan 10 Points Maximum

Will meet or exceed objective(s):	10 points
Will meet most objective(s):	7 points
Will meet some objective(s):	4 points
Does not meet objective(s):	0 points

8) **Cost/Benefits** **5 Points Maximum**

This criteria may not apply to all opportunities. (Units other than area may require different multipliers.)

Less than \$300 per acre:	5 points
\$300-\$700 per acre:	3 points
Greater than \$700 per acre:	1 point

GRAND TOTAL (100 Points Maximum) =

Appendix C.a. Animal Species of Special Concern within the MOYOCO Ecosystem (March 2000)					
Scientific Name	Common Name	USFWS Status	NHP Status	Global Rank	State Rank*
Vertebrates					
Fish					
Cottus confusus	Shorthead Sculpin		Species of Special Concern	G5	S3
Cottus rhotheus	Torrent Sculpin		Species of Special Concern	G5	S2
Cottus ricei	Spoonhead Sculpin		Species of Special Concern	G5	S1
Acipenser transmontanus pop 1	White Sturgeon (kootenai River Population)	Endangered	Species of Special Concern	G4T1Q	S1
Scaphirhynchus albus	Pallid Sturgeon	Endangered	Species of Special Concern	G1G2	S1
Scaphirhynchus platyrhynchus	Shovelnose Sturgeon		Species of Special Concern	G4	S1(WY)
Polyodon spathula	Paddlefish		Species of Special Concern	G4	S1S2
Lepisosteus platostomus	Shortnose Gar		Species of Special Concern	G5	S1
Oncorhynchus clarki bouvieri	Yellowstone Cutthroat Trout		Species of Special Concern	G4T2	S2(MT&WY)
Oncorhynchus clarki lewisi	Westslope Cutthroat Trout		Species of Special Concern	G4T3	S3
Oncorhynchus mykiss gairdneri	Interior Redband Trout		Species of Special Concern	G5T4?	S2
Salvelinus confluentus	Bull Trout	Threatened	Species of Special Concern	G3	S3
Thymallus arcticus montanus	Montana Arctic Grayling	Candidate	Species of Special Concern	G5T2Q	S1
Phoxinus eos x phoxinus neogaeus	Northern Redbelly X Finescale Dace		Species of Special Concern	HYB	S3
Hybopsis gelida	Sturgeon Chub	Candidate	Species of Special Concern	G2	S2(MT);S2(ND);S1S2(WY)
Hybopsis meeki	Sicklefin Chub	Candidate	Species of Special Concern	G3	S1(MT);S2(ND)
Nocomis biguttatus	Hornyhead Chub		Species of Special Concern	G5	S2(WY)
Semotilus margarita	Pearl Dace		Species of Special Concern	G5	S2
Cypleptus elongatus	Blue Sucker		Species of Special Concern	G4	S3?
Hybognathus argyritis	Western Silvery Minnow		Species of Special Concern	G5	S4S5(MT);S2(WY)
Percopsis omiscomaycus	Trout-perch		Species of Special Concern	G5	S1
Amphibians					
Plethodon idahoensis	Coeur D'alene Salamander		Species of Special Concern	G3	S2
Dicamptodon aterrimus	Idaho Giant Salamander		Species of Special Concern	G3	SR
Ambystoma tigrinum	Tiger Salamander		Species of Special Concern	G5	S3S4(WY)
Bufo hemiophrys	Canadian Toad		Species of Special Concern	G4	S1
Bufo boreas	Western Boreal Toad (N. Rocky pop.)		Species of Special Concern	G4T4	S2(WY)
Rana luteiventris	Columbia Spotted Frog		Species of Special Concern	G4	S2S3(WY)
Rana pipiens	Northern Leopard Frog		Species of Special Concern	G5	S3S4(MT);S3(WY)
Rana sylvatica	Wood Frog		Species of Special Concern	G5T2Q	SR(MT);S2(WY)
Reptiles					
Chelydra serpentina	Snapping Turtle		Species of Special Concern	G5	S3
Trionyx spiniferus	Spiny Softshell		Species of Special Concern	G5	S3
Charina bottae	Rubber Boa		Species of Special Concern	G5	S2S3(WY)
Heterodon nasicus	Western Hognose Snake		Species of Special Concern	G5	S3?
Lampropeltis triangulum	Milk Snake		Species of Special Concern	G5	S2(MT);S2S3(WY)
Liochlorophis vernalis	Smooth Green Snake		Species of Special Concern	G5	S2S3
Birds					
Gavia immer	Common Loon		Species of Special Concern	G5	S1S2B,SZN(MT);S2B,SZN(WY)
Aechmophorus clarkii	Clark's Grebe		Species of Special Concern	G5	S2S4B,SZN(MT);S2B,SZN(WY)
Pelecanus erythrorhynchus	American White Pelican		Species of Special Concern	G3	S2B,SZN(MT);S1B,SZN(WY)
Botaurus lentiginosus	American Bittern		Species of Special Concern	G4	S2B,SZN(WY)
Nycticorax nycticorax	Black-crowned Night-heron		Species of Special Concern	G5	S2S3B,SZN(MT);S3B,SZN(WY)
Plegadis chihi	White-faced Ibis		Species of Special Concern	G5	S1B,SZN
Egretta thula	Snowy Egret		Species of Special Concern	G5	S3B,SZN(WY)

<i>Cygnus buccinator</i>	Trumpeter Swan		Species of Special Concern	G4	S2B,S2N
<i>Histrionicus histrionicus</i>	Harlequin Duck		Species of Special Concern	G4	S2B,S2N(MT);S1B,S2N(WY)
<i>Haliaeetus leucocephalus</i>	Bald Eagle	Threatened	Species of Special Concern	G4	S3B,S3N(MT);S2B,S3N(WY)
<i>Aquila chrysaetos</i>	Golden Eagle		Species of Special Concern	G5	S3(ND)
<i>Accipiter gentilis</i>	Northern Goshawk		Species of Special Concern	G5	S3S4(MT);S23B,S4N(WY)
<i>Buteo regalis</i>	Ferruginous Hawk		Species of Special Concern	G4	S3B,S2N(MT);S3B,S3N(WY)
<i>Falco columbarius</i>	Merlin		Species of Special Concern	G5	S2(ND);S2B,S2N(WY)
<i>Falco mexicanus</i>	Prairie falcon		Species of Special Concern	G5	S3(ND)
<i>Falco peregrinus</i>	Peregrine Falcon	Endangered (due to similar appearance)	Species of Special Concern	G4T3	S1S2B,S2N(MT);S1B,S2N(WY)
<i>Lanius ludovicianus</i>	Loggerhead Shrike		Species of Special Concern	G5	S4B,S2N(MT&WY)
<i>Tympanuchus phasianellus columbianus</i>	Columbian Sharp-tailed Grouse		Species of Special Concern	G4T3	S1
<i>Coturnicops noveboracensis</i>	Yellow Rail		Species of Special Concern	G4	S1B,S2N
<i>Grus americana</i>	Whooping Crane	Endangered	Species of Special Concern	G1	S2N
<i>Charadrius melodus</i>	Piping Plover	Threatened	Species of Special Concern	G3	S2B,S2N(MT);S1S2(ND)
<i>Charadrius montanus</i>	Mountain Plover	Candidate	Species of Special Concern	G2	S2B,S2N(MT);S2B,S2N(WY)
<i>Himantopus mexicanus</i>	Black-necked Stilt		Species of Special Concern	G5	S2B,S2N
<i>Numenius americanus</i>	Long-billed Curlew		Species of Special Concern	G5	S3B,S2N(WY)
<i>Larus californicus</i>	California Gull		Species of Special Concern	G5	S2?B,S2N(WY)
<i>Larus delawarensis</i>	Ring-billed Gull		Species of Special Concern	G5	S1B,S2N(WY)
<i>Larus pipixcan</i>	Franklin's Gull		Species of Special Concern	G4G5	S3B,S2N
<i>Calcarius mccownii</i>	McCown's Longspur		Species of Special Concern	G5	S3B,S2N(WY)
<i>Sterna caspia</i>	Caspian Tern		Species of Special Concern	G5	S2B,S2N(MT);S1B,S2N(WY)
<i>Sterna hirundo</i>	Common Tern		Species of Special Concern	G5	S3B,S2N
<i>Sterna forsteri</i>	Forster's Tern		Species of Special Concern	G5	S2B,S2N(MT);S1B,S2N(WY)
<i>Sterna antillarum athalassos</i>	Interior Least Tern	Endangered	Species of Special Concern	G4T2Q	S1B,S2N
<i>Chlidonias niger</i>	Black Tern		Species of Special Concern	G4	S3B,S2N(MT);S1B,S2N(WY)
<i>Bartramia longicauda</i>	Upland Sandpiper		Species of Special Concern	G5	S3B,S2N(WY)
<i>Coccyzus americanus</i>	Yellow-billed Cuckoo		Species of Special Concern	G5	S3B,S2N(MT);S2B,S2N(WY)
<i>Coccyzus erythrophthalmus</i>	Black-billed Cuckoo		Species of Special Concern	G5	S2B,S2N(WY)
<i>Lagopus leucurus</i>	White-tailed Ptarmigan		Species of Special Concern	G5	S2S3(MT);S1(WY)
<i>Otus flammeolus</i>	Flammulated Owl		Species of Special Concern	G4	S2S3B,S2N(MT);SA?B(WY)
<i>Athene cucularia</i>	Burrowing Owl		Species of Special Concern	G4	S3B,S2N(MT);SU(ND);S3B,S2N(WY)
<i>Strix nebulosa</i>	Great Gray Owl		Species of Special Concern	G5	S3(MT);S2(WY)
<i>Aegolius funereus</i>	Boreal Owl		Species of Special Concern	G5	S3S4(MT);S2(WY)
<i>Asio flammeus</i>	Short-eared Owl		Species of Special Concern	G5	S2S3(WY)
<i>Cypseloides niger</i>	Black Swift		Species of Special Concern	G4	S3B,S2N
<i>Picoides arcticus</i>	Black-backed Woodpecker		Species of Special Concern	G5	S3
<i>Picoides tridactylus</i>	Three-toed Woodpecker		Species of Special Concern	G5	S3(WY)
<i>Sphyrapicus thyroideus</i>	Williamson's Sapsucker		Species of Special Concern	G5	S3B,S2N(WY)
<i>Empidonax alnorum</i>	Alder Flycatcher		Species of Special Concern	G5	S1B,S2N
<i>Empidonax hammondi</i>	Hammond's Flycatcher		Species of Special Concern	G5	S3B,S2N(WY)
<i>Loxia leucoptera</i>	White-winged Crossbill		Species of Special Concern	G5	S1B,S2N(WY)
<i>Tyrannus vociferans</i>	Cassin's Kingbird		Species of Special Concern	G5	S1S3B,S2N
<i>Regulus satrapa</i>	Golden-crowned Kinglet		Species of Special Concern	G5	S3(WY)
<i>Poliophtila caerulea</i>	Blue-gray Gnatcatcher		Species of Special Concern	G5	S1B,SAN
<i>Sitta pygmaea</i>	Pygmy Nuthatch		Species of Special Concern	G5	S2S3(WY)
<i>Spiza americana</i>	Dickcissel		Species of Special Concern	G5	S1S2B,S2N(MT);S2B,S2N(WY)
<i>Ammodramus bairdii</i>	Baird's Sparrow		Species of Special Concern	G4	S3S4B,S2N(MT);SU(ND)
<i>Ammodramus leconteii</i>	Le Conte's Sparrow		Species of Special Concern	G4	S1S2B,S2N
<i>Ammodramus nelsoni</i>	Nelson's Sharp-tailed Sparrow		Species of Special Concern	G5	S1B,S2N

<i>Ammodramus savannarum</i>	Grasshopper Sparrow		Species of Special Concern	G5	S3B,SZN(WY)
<i>Amphispiza belli</i>	Sage Sparrow		Species of Special Concern	G5	SAB,SZN(MT);S3B,SZN(WY)
<i>Spizella breweri</i>	Brewer's Sparrow		Species of Special Concern	G5	S3B,SZN(WY)
<i>Anthus spragueii</i>	Sprague's Pipit		Species of Special Concern	G4	S3(ND)
<i>Dendroica nigrescens</i>	Black-throated Gray Warbler		Species of Special Concern	G5	S2B,SZN(WY)
<i>Stellula calliope</i>	Calliope Hummingbird		Species of Special Concern	G5	S2B,SZN(WY)
<i>Oreoscoptes montanus</i>	Sage Thrasher		Species of Special Concern	G5	S3B,SZN(WY)
<i>Phalaropus tricolor</i>	Wilson's Phalarope		Species of Special Concern	G5	S3B,S3N(WY)
<i>Sayornis phoebe</i>	Eastern Phoebe		Species of Special Concern	G5	S1B,SZN(WY)
<i>Dolichonyx oryzivorus</i>	Bobolink		Species of Special Concern	G5	S3B,SZN(WY)
Mammals					
<i>Sorex haydeni</i>	Hayden's Shrew		Species of Special Concern	G4	S2(WY)
<i>Sorex preblei</i>	Preble's Shrew		Species of Special Concern	G4	S3
<i>Sorex nanus</i>	Dwarf Shrew		Species of Special Concern	G4	S3(MT);S2S3(WY)
<i>Sorex merriami</i>	Merriam's Shrew		Species of Special Concern	G5	S3
<i>Lasionycteris noctivagans</i>	Silver-haired Bat		Species of Special Concern	G5	S3B,SZ?N(WY)
<i>Lasiurus cinereus</i>	Hoary Bat		Species of Special Concern	G5	S2B,SZ?N(WY)
<i>Myotis ciliolabrum</i>	Small-footed Myotis		Species of Special Concern	G5	S3B,S3N(WY)
<i>Myotis evotis</i>	Long-eared Myotis		Species of Special Concern	G5	S1B,S1?N(WY)
<i>Myotis thysanodes</i>	Fringed Myotis		Species of Special Concern	G5	S3(MT);S1B,S1N(WY)
<i>Myotis septentrionalis</i>	Northern Myotis		Species of Special Concern	G4	S2
<i>Myotis volans</i>	Long-legged Myotis		Species of Special Concern	G5	S3B,SZN(WY)
<i>Euderma maculatum</i>	Spotted Bat		Species of Special Concern	G4	S1(MT);S1B,SZ?N(WY)
<i>Corynorhinus townsendii</i>	Townsend's Big-eared Bat		Species of Special Concern	G4	S2S3(MT);S1B,S2N(WY)
<i>Antrozous pallidus</i>	Pallid Bat		Species of Special Concern	G5	S1(MT);S1B,SZ?N(WY)
<i>Lepus californicus</i>	Black-tailed Jack Rabbit		Species of Special Concern	G5	S2S3
<i>Brachylagus idahoensis</i>	Pygmy Rabbit		Species of Special Concern	G4	S2S3
<i>Tamias umbrinus</i>	Uinta Chipmunk		Species of Special Concern	G5	S3?
<i>Cynomys ludovicianus</i>	Black-tailed Prairie Dog		Species of Special Concern	G4	S3S4
<i>Cynomys leucurus</i>	White-tailed Prairie Dog		Species of Special Concern	G4	S2
<i>Perognathus parvus</i>	Great Basin Pocket Mouse		Species of Special Concern	G5	S2S4
<i>Perognathus flavescens</i>	Plains Pocket Mouse		Species of Special Concern	G5	S2(WY)
<i>Spermophilus tridecemlineatus allen</i>	Allen's Thirteen-lined Ground Squirrel		Species of Special Concern	G5T1Q	S1(WY)
<i>Chaetodipus hispidus</i>	Hispid Pocket Mouse		Species of Special Concern	G5	S1
<i>Synaptomys borealis</i>	Northern Bog Lemming		Species of Special Concern	G4	S2
<i>Zapus hudsonius</i>	Meadow Jumping Mouse		Species of Special Concern	G5	S2S3
<i>Microtus richardsoni</i>	Water Vole		Species of Special Concern	G5	S2S3(WY)
<i>Canis lupus</i>	Gray Wolf	Endangered (Non-essential exp. pop.)	Species of Special Concern	G4	S1(MT);S2(WY)
<i>Vulpes velox</i>	Swift Fox	Candidate	Species of Special Concern	G3	S1
<i>Lutra canadensis</i>	River Otter		Species of Special Concern	G5	S3(WY)
<i>Ursus arctos horribilis</i>	Grizzly Bear	Threatened	Species of Special Concern	G4T3	S1S2(MT);S2(WY)
<i>Bos bison</i>	Bison		Species of Special Concern	G3	S2(WY)
<i>Martes americana</i>	Pine Marten		Species of Special Concern	G5T2Q	S2(WY)
<i>Martes pennanti</i>	Fisher		Species of Special Concern	G5	S2(MT);S1(WY)
<i>Mustela nigripes</i>	Black-footed Ferret	Endangered (Non-essential exp. pop.)	Species of Special Concern	G1	SH#(MT);S1(WY)
<i>Mustela nivalis</i>	Least Weasel		Species of Special Concern	G5	S1(WY)
<i>Gulo gulo</i>	Wolverine		Species of Special Concern	G4	S2(WY)
<i>Gulo gulo luscus</i>	North American Wolverine		Species of Special Concern	G5T4	S2
<i>Felis lynx</i>	Lynx		Species of Special Concern	G5	S2(MT);S1(WY)

Rangifer tarandus caribou	Woodland Caribou		Species of Special Concern	G5T4	SX
Invertebrates					
Molluscs					
Discus shimeki	Striate Disc		Species of Special Concern	G4	S1
Discus brunsoni	Mission Range Disc		Species of Special Concern	G1	SH
Hemphillia danieli	Marbled Jumping-slug		Species of Special Concern	G1G3	S1S3
Magnipelta mycophaga	Spotted Slug		Species of Special Concern	G2G3	S1S3
Zacoleus idahoensis	Sheathed Slug		Species of Special Concern	G3G4	S1S2
Oreohelix alpina	Alpine Mountainsnail		Species of Special Concern	G1	SH
Oreohelix amariradix	Bitterroot Mountainsnail		Species of Special Concern	G1G2	S1S2
Oreohelix carinifera	Keeled Mountainsnail		Species of Special Concern	G1	S1
Oreohelix elrodi	Carinate Mountainsnail		Species of Special Concern	G1	S1
Oreohelix strigosa berryi	Berry's Mountainsnail		Species of Special Concern	G4T2	S1S2
Oreohelix yavapai mariae	Gallatin Mountainsnail		Species of Special Concern	G4?T1	S1
Oreohelix sp 3	Bearmouth Mountainsnail		Species of Special Concern	G1G2	S1S2
Oreohelix sp 4	Drummond Mountainsnail		Species of Special Concern	G1	S1
Oreohelix sp 5	Brunson Mountainsnail		Species of Special Concern	G1G2	S1S2
Oreohelix sp 6	Kintla Lake Mountainsnail		Species of Special Concern	G1	S1
Oreohelix sp 7	Kitchen Creek Mountainsnail		Species of Special Concern	G1G2	S1S2
Oreohelix sp 10	Missoula Mountainsnail		Species of Special Concern	G1G3	S1S3
Oreohelix sp 11	Subcarinate Mountainsnail		Species of Special Concern	G1	S1
Oreohelix sp 31	Byrne Resort Mountainsnail		Species of Special Concern	G1G2	S1S2
Udosarx lyrata russelli	Russell Mantleslug		Species of Special Concern	G1	S1
Lyogyrus greggi	Rocky Mountain Dusksnail		Species of Special Concern	G3G4	S1
Amnicola sp 2	Washington Dusksnail		Species of Special Concern	G1	S1
Fluminicola fuscus	Columbia Pebblesnail		Species of Special Concern	G2G3	SX
Acroloxus coloradensis	Rocky Mountain Capshell		Species of Special Concern	G?	S1
Stagnicola elrodi	Flathead Pondsnaail		Species of Special Concern	G1	S1
Stagnicola elrodianus	Largemouth Pondsnaail		Species of Special Concern	G1	S1
Stagnicola montanensis	Mountain Marshsnail		Species of Special Concern	G3	S1S3
Fisherola nuttalli	Shortface Lanx		Species of Special Concern	G2?	S1S3
Physa megalochlamys	Large-mantle Physa		Species of Special Concern	G3	S1
Insects					
Zaitzevia thermae	Warm Spring Zaitzevian Riffle Beetle	Candidate	Species of Special Concern	G1	S1
Microcyloepus browni	Brown's Microcyloepus Riffle Beetle		Species of Special Concern	G1	S1
Caenis youngi	A Mayfly		Species of Special Concern	G3	S2
Phyciodes batesii	Tawny Crescent		Species of Special Concern	G4	S2S3
Euphydryas gillettii	Gillette's Checkerspot		Species of Special Concern	G3	S3
Erpetogomphus designatus	Eastern Ringtail		Species of Special Concern	G5	S1
Aeshna subarctica	Subarctic Darner		Species of Special Concern	G5	S1S2
Somatochlora albicincta	Ringed Emerald		Species of Special Concern	G5	S1S3
Somatochlora walshii	Brush-tipped Emerald		Species of Special Concern	G5	S1S2
Erythemis collocata	Western Pondhawk		Species of Special Concern	G5	S1S2
Leucorrhinia borealis	Boreal Whiteface		Species of Special Concern	G5	S1
Coenagrion interrogatum	Subarctic Bluet		Species of Special Concern	G5	S1S2
Enallagma optimolocus	Last Best Place Damselfly		Species of Special Concern	G1G3	S1S3
Isocapnia crinita	A Stonefly		Species of Special Concern	GU	S2
Isocapnia integra	A Stonefly		Species of Special Concern	G2	S2
Utacapnia columbiana	A Stonefly		Species of Special Concern	GU	S2
Lednia tumana	Meltwater Lednian Stonefly		Species of Special Concern	G1	S1
Zapada cordillera	A Stonefly		Species of Special Concern	GU	S2

Zapada glacier	Western Glacier Stonefly		Species of Special Concern	G1	S1
Isoperla petersoni	A Stonefly		Species of Special Concern	GU	S2?
Rhyacophila alexanderi	Alexander's Rhyacophilan Caddisfly		Species of Special Concern	G2	S2
Rhyacophila ebria	A Caddisfly		Species of Special Concern	G1?	S1?
Rhyacophila newelli	A Rhyacophilan Caddisfly		Species of Special Concern	G2?	S2?
Rhyacophila glacieri	A Rhyacophilan Caddisfly		Species of Special Concern	G1	S1
Agapetus montanus	An Agapetus Caddisfly		Species of Special Concern	G2?	S2?
Watch Species					
Couesius plumbeus	Lake Chub		Watch Species	G5	S3(ND)
Hybognathus placitus	Plains Minnow		Watch Species	G5	S4S5
Hybopsis gracilis	Flathead Chub		Watch Species	G5	S5
Ascaphus truei	Tailed Frog		Watch Species	G4	S4
Bufo boreas	Western Toad		Watch Species	G4	S3S4
Bufo cognatus	Great Plains Toad		Watch Species	G5	S3S4
Spea intermontana	Great Basin Spadefoot		Watch Species	G5	SR
Sceloporus graciosus	Sagebrush Lizard		Watch Species	G5	S3S4
Eumeces skiltonianus	Western Skink		Watch Species	G5	S3S4
Ardea herodias	Great Blue Heron		Watch Species	G5	S4B,SZN
Tyto alba	Barn Owl		Watch Species	G5	SAB,SAN
Otus asio	Eastern Screech-owl		Watch Species	G5	S3S4
Otus kennicottii	Western Screech-owl		Watch Species	G5	S3S4
Surnia ulula	Northern Hawk Owl		Watch Species	G5	SAB,SAN
Selasphorus platycercus	Broad-tailed Hummingbird		Watch Species	G5	SAB,SAN
Sialia mexicana	Western Bluebird		Watch Species		
Vermivora peregrina	Tennessee Warbler		Watch Species	G5	S3S4B,SZN
Mniotilta varia	Black-and-white Warbler		Watch Species	G5	S2S3B,SZN
Myotis yumanensis	Yuma Myotis		Watch Species	G5	S3
Sylvilagus floridanus	Eastern Cottontail		Watch Species	G5	S2?
Spilogale putorius	Eastern Spotted Skunk		Watch Species	G5	SP
Spilogale gracilis	Western Spotted Skunk		Watch Species	G5	SU
Spermophilus lateralis lateralis	Wind River Golden-Mantled Ground Squirrel		Watch Species		
Radiodiscus abietum	Fir Pinwheel		Watch Species	GU	SU
Polygyrella polygyrella	Humped Coin		Watch Species	GU	SU
Udosarx lyrata lyrata	Lyre Mantleslug		Watch Species	GU	SU
Promenetus exacuous megas	Prairie Sprite		Watch Species	GU	SU
Tanypteryx hageni	Black Petaltail		Watch Species	G3	SR
Cordulegaster dorsalis	Pacific Spiketail		Watch Species	G5	SU
Gomphus externus	Plains Clubtail		Watch Species	G5	S2S4
Ophiogomphus occidentis	Sinuuous Snaketail		Watch Species	G4	S2S4
Aeshna canadensis	Canada Darner		Watch Species	G5	S2S4
Aeshna constricta	Lance-tipped Darner		Watch Species	G5	S1S3
Aeshna multicolor	Blue-eyed Darner		Watch Species	G5	S2S4
Aeshna sitchensis	Zigzag Darner		Watch Species	G5	S2S3
Aeshna tuberculifera	Black-tipped Darner		Watch Species	G4	S2S4
Macromia illinoensis	Illinois River Cruiser		Watch Species	G5	SR
Somatochlora minor	Ocellated Emerald		Watch Species	G5	S2S4
Libellula composita	Bleached Skimmer		Watch Species	G3	SR
Libellula nodisticta	Hoary Skimmer		Watch Species	G3	SR
Pantala flavescens	Wandering Glider		Watch Species	G5	S1?
Sympetrum madidum	Red-veined Meadowhawk		Watch Species	G4	S2S3

Lestes forcipatus	Sweetflag Spreadwing		Watch Species	G5	S1S3
Argia fumipennis violacea	A Damselfly		Watch Species	G5T5	S2S4
Argia alberta	Paiute Dancer		Watch Species	G4	S2S3
Coenagrion angulatum	Prairie Bluet		Watch Species	G5	S1S3
Enallagma civile	Familiar Bluet		Watch Species	G5	S2S4
Enallagma clausum	Alkali Bluet		Watch Species	G5	S2S4
Arigomphus cornutus	Horned Clubtail		Watch Species	G4	S2S4
* If no state is listed, MT is implied.					

Appendix C.b . Plant Species of Special Concern within the MOYOCO Ecosystem (March 2000)					
Scientific Name	Common Name	USFWS Status	NHP Status	Global Rank	State Rank*
Vascular Plants					
<i>Adoxa moschatellina</i>	Musk-root		Species of Special Concern	G5	S1(MT);S1(WY)
<i>Agastache cusickii</i>	Cusick's Horse-mint		Species of Special Concern	G3G4	S1
<i>Agrostis oregonensis</i>	Oregon Bentgrass		Species of Special Concern	G4	S1(WY)
<i>Allium acuminatum</i>	Tapertip Onion		Species of Special Concern	G5	S1
<i>Allium columbianum</i>	Columbia Onion		Species of Special Concern	G3	S1
<i>Allium parvum</i>	Small Onion		Species of Special Concern	G5	S2
<i>Allium simillimum</i>	Dwarf Onion		Species of Special Concern	G4	S1
<i>Allotropa virgata</i>	Candystick		Species of Special Concern	G4	S3
<i>Alnus rubra</i>	Red Alder		Species of Special Concern	G5	S1
<i>Amerorchis rotundifolia</i>	Round-leaved Orchis		Species of Special Concern	G5	S2S3
<i>Ammannia coccinea</i>	Scarlet Ammannia		Species of Special Concern	G5	SH
<i>Amorpha canescens</i>	Lead Plant		Species of Special Concern	G5	SH
<i>Androsace chamaejasme ssp carinata</i>	Sweet-flowered Rock Jasmine		Species of Special Concern	G5T4	S1S2(WY)
<i>Anemone narcissiflora ssp zephyra</i>	Zephyr windflower		Species of Special Concern	G5T4	S1(WY)
<i>Antennaria densifolia</i>	Dense-leaved Antennaria		Species of Special Concern	G3	S1
<i>Antennaria flagellaris</i>	Stoloniferous Pussytoes		Species of Special Concern	G5?	S1(WY)
<i>Antennaria monocephala</i>	Single-head Pussytoes		Species of Special Concern	G4G5	S1(WY)
<i>Antennaria neglecta</i>	Field Pussytoes		Species of Special Concern	G5	S1(WY)
<i>Aquilegia brevistyla</i>	Short-styled Columbine		Species of Special Concern	G5	S2(MT);S1(WY)
<i>Aquilegia formosa</i>	Sitka Columbine		Species of Special Concern	G5T5	S1(MT);S1(WY)
<i>Arabis demissa var languida</i>	Daggett Rock Cress		Species of Special Concern	G5T4	S1
<i>Arabis fecunda</i>	Sapphire Rockcress		Species of Special Concern	G2	S2
<i>Arabis lyrata var kamchatica</i>	Lyre-leaf Rockcress		Species of Special Concern	G5T5?	S1
<i>Arabis williamsii var williamsii</i>	William's Rockcress		Species of Special Concern	G3QT3	S3(WY)
<i>Arctostaphylos patula</i>	Green-leaf Manzanita		Species of Special Concern	G4	S1
<i>Arnica augustifolia ssp tomentosa</i>	Alpine Arnica		Species of Special Concern	G5T5	S1(WY)
<i>Arnica lonchophylla</i>	Northern Arnica		Species of Special Concern	G4	S1(WY)
<i>Asclepias incarnata</i>	Swamp Milkweed		Species of Special Concern	G5	S1
<i>Asclepias ovalifolia</i>	Ovalleaf Milkweed		Species of Special Concern	G5?	S1
<i>Asclepias stenophylla</i>	Narrowleaf Milkweed		Species of Special Concern	G4G5	S1
<i>Asplenium trichomanes</i>	Maidenhair Spleenwort		Species of Special Concern	G5	SX
<i>Asplenium trichomanes-ramosum</i>	Green Spleenwort		Species of Special Concern	G4	S2(WY)
<i>Aster borealis</i>	Boreal Aster		Species of Special Concern	G5	S1(WY)
<i>Aster frondosus</i>	Alkali Aster		Species of Special Concern	G4	S1
<i>Aster glaucodes</i>	Gray Aster		Species of Special Concern	G4G5	S1
<i>Aster mollis</i>	Soft Aster		Species of Special Concern	G3	S3(WY)
<i>Astragalus aretioides</i>	Sweetwater Milkvetch		Species of Special Concern	G4	S2

<i>Astragalus barrii</i>	Barr's Milkvetch		Species of Special Concern	G3	S3(MT);S3(WY)
<i>Astragalus ceramicus</i> var <i>apus</i>	Painted Milkvetch		Species of Special Concern	G4T3	S1
<i>Astragalus convallarius</i> var <i>convallarius</i>	Lesser Rushy Milkvetch		Species of Special Concern	G5T5	S2
<i>Astragalus drummondii</i>	Drummond's Milkvetch		Species of Special Concern	G5	S1(ND)
<i>Astragalus geyeri</i> var <i>geyeri</i>	Geyer's Milkvetch		Species of Special Concern	G4?T4?	S2
<i>Astragalus gilviflorus</i> var <i>purpureu</i>	Dubios Milkvetch		Species of Special Concern	G5T2	S2(WY)
<i>Astragalus grayi</i>	Gray's Milkvetch		Species of Special Concern	G4?	S1
<i>Astragalus jejunus</i> var <i>articulatus</i>	Hyattville Milkvetch		Species of Special Concern	G3T1	S1(WY)
<i>Astragalus lackschewitzii</i>	Lackschewitz' Milkvetch		Species of Special Concern	G2	S2
<i>Astragalus nelsonianus</i>	Nelson's Milkvetch		Species of Special Concern	G3	S2(WY)
<i>Astragalus oreganus</i>	Wind River Milkvetch		Species of Special Concern	G4?	S1
<i>Astragalus racemosus</i> var <i>longisetus</i>	Raceme Milkvetch		Species of Special Concern	G5T4	S2
<i>Astragalus scaphoides</i>	Bitterroot Milkvetch		Species of Special Concern	G3	S2
<i>Astragalus simplicifolius</i>	Bun Milkvetch		Species of Special Concern	G3	S3(WY)
<i>Astragalus terminalis</i>	Railhead Milkvetch		Species of Special Concern	G3	S2
<i>Athysanus pusillus</i>	Sandweed		Species of Special Concern	G4	S1
<i>Atriplex truncata</i>	Wedge-leaved Saltbush		Species of Special Concern	G5	SH
<i>Bacopa rotundifolia</i>	Roundleaf Water-hyssop		Species of Special Concern	G5	S1
<i>Balsamorhiza hookeri</i>	Hooker's Balsam-root		Species of Special Concern	G5	S1
<i>Balsamorhiza macrophylla</i>	Large-leaved Balsamroot		Species of Special Concern	G3G5	S1
<i>Bidens beckii</i>	Beck Water-marigold		Species of Special Concern	G4	S2
<i>Boisduvalia densiflora</i>	Dense Spike-primrose		Species of Special Concern	G5	SH
<i>Botrychium ascendens</i>	Upward-lobed Moonwort		Species of Special Concern	G3	S1(MT);S1(WY)
<i>Botrychium campestre</i>	Prairie Dunewort		Species of Special Concern	G3	S1
<i>Botrychium crenulatum</i>	Wavy Moonwort		Species of Special Concern	G3	S2
<i>Botrychium hesperium</i>	Western Moonwort		Species of Special Concern	G3	S2
<i>Botrychium lanceolatum</i>	Lance-leaved Grapefern		Species of Special Concern	G5	S1(WY)
<i>Botrychium lineare</i>	Linearleaf Moonwort		Species of Special Concern	G1	S1
<i>Botrychium minganese</i>	Mingan Island Moonwort		Species of Special Concern	G4	S1(WY)
<i>Botrychium montanum</i>	Mountain Moonwort		Species of Special Concern	G3	S3
<i>Botrychium pallidum</i>	Pale Moonwort		Species of Special Concern	G2	S1
<i>Botrychium paradoxum</i>	Peculiar Moonwort		Species of Special Concern	G2	S2
<i>Botrychium pedunculatum</i>	Stalked Moonwort		Species of Special Concern	G2?	S1
<i>Botrychium spathulatum</i>	Spoon-leaf Moonwort		Species of Special Concern	G3G4	S1
<i>Botrychium virginianum</i>	Rattlesnake Fern		Species of Special Concern	G5	S1(WY)
<i>Brasenia schreberi</i>	Watershield		Species of Special Concern	G5	S2
<i>Braya humilis</i>	Low Braya		Species of Special Concern	G4	S1(MT);S1(WY)
<i>Brickellia microphylla</i> var <i>scabra</i>	Little-leaved Brickell Brush		Species of Special Concern	G4G5T4?	S1(WY)
<i>Bromus vulgaris</i>	Narrow-flowered Brome		Species of Special Concern	G5	S1S2(WY)
<i>Calochortus bruneauensis</i>	Bruneau Mariposa Lily		Species of Special Concern	G5	SH
<i>Camissonia andina</i>	Obscure Evening-primrose		Species of Special Concern	G4	S1
<i>Camissonia parvula</i>	Small Camissonia		Species of Special Concern	G4	S1

<i>Cardamine oligosperma</i> var <i>kamtschatica</i>	Few-seeded Bittercress		Species of Special Concern	G5T?	S1
<i>Carex amplifolia</i>	Big-leaf Sedge		Species of Special Concern	G4	S1
<i>Carex buxbaumii</i>	Buxbaum's Sedge		Species of Special Concern	G5	S2(WY)
<i>Carex chordorrhiza</i>	Creeping Sedge		Species of Special Concern	G5	S2
<i>Carex comosa</i>	Bristly Sedge		Species of Special Concern	G5	S1
<i>Carex crawei</i>	Craw's Sedge		Species of Special Concern	G5	S2
<i>Carex cusickii</i>	Cusick's Sedge		Species of Special Concern	G5	S1(WY)
<i>Carex deweyanna</i> var <i>bolanderi</i>	Bolander's Sedge		Species of Special Concern	G5T5	S1(WY)
<i>Carex diandra</i>	Lesser Panicked Sedge		Species of Special Concern	G5	S1S2(WY)
<i>Carex gravida</i> var <i>gravida</i>	Pregnant Sedge		Species of Special Concern	G5T?	S1
<i>Carex incurviformis</i>	Seaside Sedge		Species of Special Concern	G3G5T3	S2(WY)
<i>Carex incurviformis</i> var <i>incurviformis</i>	Maritime Sedge		Species of Special Concern	G4G5T?	S1
<i>Carex lenticularis</i> var <i>dolia</i>	Goose-grass Sedge		Species of Special Concern	G5T3Q	S2
<i>Carex leptalea</i>	Bristly-stalk Sedge		Species of Special Concern	G5	S1(WY)
<i>Carex limosa</i>	Mud Sedge		Species of Special Concern	G5	S2(WY)
<i>Carex livida</i>	Pale Sedge		Species of Special Concern	G5	S3(MT);S1(WY)
<i>Carex luzulina</i> var <i>atropurpurea</i>	Black and Purple Sedge		Species of Special Concern	G5T3	S2(WY)
<i>Carex microglochis</i>	False Uncinia Sedge		Species of Special Concern	G5?	S1(WY)
<i>Carex misandra</i>	Short-leaf Sedge		Species of Special Concern	G5	S1(WY)
<i>Carex multicostata</i>	Many-ribbed Sedge		Species of Special Concern	G5	S1
<i>Carex nelsonii</i>	Nelson's Sedge		Species of Special Concern	G3	S2(WY)
<i>Carex norvegica</i> ssp <i>inserrulata</i>	Toothed Scandinavian Sedge		Species of Special Concern	G5T?Q	S1
<i>Carex norvegica</i> ssp <i>stevanii</i>	Steven's Scandinavian Sedge		Species of Special Concern	G5T?	S1
<i>Carex occidentalis</i>	Western Sedge		Species of Special Concern	G4	SH(MT);S1(WY)
<i>Carex pallescens</i>	Palish Sedge		Species of Special Concern	G5	S1
<i>Carex parryana</i> ssp <i>idaho</i>	Idaho Sedge		Species of Special Concern	G4T2	S2
<i>Carex paupercula</i>	Poor Sedge		Species of Special Concern	G5	S3
<i>Carex petricosa</i>	Rock Sedge		Species of Special Concern	G4	S1
<i>Carex prairea</i>	Prairie Sedge		Species of Special Concern	G5?	S1
<i>Carex rostrata</i>	Beaked Sedge		Species of Special Concern	G5	S1
<i>Carex sartwellii</i> var <i>sartwellii</i>	Sartwell's Sedge		Species of Special Concern	G4	S1(WY)
<i>Carex scoparia</i>	Pointed Broom Sedge		Species of Special Concern	G5	S2
<i>Carex simulata</i>	Copycat Sedge		Species of Special Concern	G5	S2(ND)
<i>Carex stenoptila</i>	Small-winged Sedge		Species of Special Concern	G3?	S2
<i>Carex subnigricans</i>	Dark Alpine Sedge		Species of Special Concern	G5T4Q	S1(WY)
<i>Carex sychnocephala</i>	Many-headed Sedge		Species of Special Concern	G4	S1
<i>Carex tenuiflora</i>	Thin-flowered Sedge		Species of Special Concern	G5	S1
<i>Carex tinctoria</i>	Slender Sedge		Species of Special Concern	G4G5	SU
<i>Carex vaginata</i>	Sheathed Sedge		Species of Special Concern	G5	S1
<i>Castilleja cervina</i>	Deer Indian Paintbrush		Species of Special Concern	G3G4	S1
<i>Castilleja covilleana</i>	Coville Indian Paintbrush		Species of Special Concern	G3G4	S2
<i>Castilleja crista-galli</i>	Cock's-Comb Paintbrush		Species of Special Concern	G3	S2(WY)

<i>Castilleja exilis</i>	Annual Indian Paintbrush		Species of Special Concern	G5	S2
<i>Castilleja gracillima</i>	Slender Indian Paintbrush		Species of Special Concern	G3G4	S2
<i>Castilleja nivea</i>	Snow Paintbrush		Species of Special Concern	G3	S2(WY)
<i>Ceanothus herbaceus</i> var <i>pubescens</i>	New Jersey Tea		Species of Special Concern	G5T?	SH
<i>Celastrus scandens</i>	Bittersweet		Species of Special Concern	G5	S1
<i>Celtis occidentalis</i>	Common Hackberry		Species of Special Concern	G5	S1(WY)
<i>Centaurium exaltatum</i>	Western Centaury		Species of Special Concern	G5	SH
<i>Centunculus minimus</i>	Chaffweed		Species of Special Concern	G5	S1
<i>Cercocarpus montanus</i> var <i>glaber</i>	Birchleaf Mountain-mahogany		Species of Special Concern	G5TU	S1
<i>Chenopodium subglabrum</i>	Smooth Goosefoot		Species of Special Concern	G3G4	S1
<i>Chrysosplenium tetrandrum</i>	Northern Golden-carpet		Species of Special Concern	G5	S3
<i>Chrysothamnus parryi</i> ssp <i>montanus</i>	Parry's Mountain Rabbitbrush		Species of Special Concern	G5T1	S1
<i>Cirsium aridum</i>	Cedar Rim Thistle		Species of Special Concern	G2Q	S2(WY)
<i>Cirsium brevistylum</i>	Short-styled Thistle		Species of Special Concern	G4	S2
<i>Cirsium canovirens</i>	Gray-Green Thistle		Species of Special Concern	G4G5	SH(WY)
<i>Cirsium foliosum</i>	Leafy Thistle		Species of Special Concern	G5	S1(WY)
<i>Cirsium longistylum</i>	Long-styled Thistle		Species of Special Concern	G2Q	S2
<i>Clarkia rhomboidea</i>	Common Clarkia		Species of Special Concern	G4	S2
<i>Claytonia arenicola</i>	Sand Springbeauty		Species of Special Concern	G4	S1
<i>Cleome lutea</i>	Yellow Bee Plant		Species of Special Concern	G5	S1
<i>Collomia tinctoria</i>	Yellow-staining Collomia		Species of Special Concern	G5	S1
<i>Corydalis sempervirens</i>	Pale Corydalis		Species of Special Concern	G4G5	S1
<i>Cryptantha fendleri</i>	Fendler Cat's-eye		Species of Special Concern	G4	S1
<i>Cryptantha scoparia</i>	Miner's Candle		Species of Special Concern	G3	S1
<i>Cryptogramma stelleri</i>	Fragile Rockbrake		Species of Special Concern	G5	S1(WY)
<i>Cuscuta indecora</i> var <i>neuropetala</i>	Pretty Dodder		Species of Special Concern	G5	S1(WY)
<i>Cymopterus evertii</i>	Evert's Waferparsnip		Species of Special Concern	G2G3	S2S3(WY)
<i>Cymopterus williamsii</i>	William's Spring-Parsley		Species of Special Concern	G3	S3(WY)
<i>Cyperus acuminatus</i>	Short-pointed Flatsedge		Species of Special Concern	G5	S1(MT);S1(WY)
<i>Cyperus erythrorhizos</i>	Red-root Flatsedge		Species of Special Concern	G5	SH
<i>Cyperus rivularis</i>	Shining Flatsedge		Species of Special Concern	G5	S1
<i>Cyperus schweinitzii</i>	Schweinitz' Flatsedge		Species of Special Concern	G5	S2
<i>Cypripedium calceolus</i> var <i>pubescens</i>	Large Yellow Lady's-slipper		Species of Special Concern	G5	S1S2(WY)
<i>Cypripedium fasciculatum</i>	Clustered Lady's-slipper		Species of Special Concern	G4	S2
<i>Cypripedium parviflorum</i>	Small Yellow Lady's-slipper		Species of Special Concern	G5	S3
<i>Cypripedium passerinum</i>	Sparrow's-egg Lady's-slipper		Species of Special Concern	G4G5	S2
<i>Cypripedium montanum</i>	Mountain Lady's-slipper		Species of Special Concern	G4G5	S1(WY)
<i>Cystopteris montana</i>	Mountain Bladder Fern		Species of Special Concern	G5	SH
<i>Dalea enneandra</i>	Nine-anther Dalea		Species of Special Concern	G5	S1
<i>Dalea villosa</i> var <i>villosa</i>	Silky Prairie Clover		Species of Special Concern	G5T?	S1
<i>Deschampsia danthonioides</i>	Annual Hairgrass		Species of Special Concern	G5	S1(WY)
<i>Descurainia torulosa</i>	Wyoming Tansymustard		Species of Special Concern	G1	S1(WY)

<i>Dichanthelium oligosanthes</i> var <i>scribnerianum</i>	Scribner's Panic Grass		Species of Special Concern	G5T5	S1
<i>Downingia laeta</i>	Great Basin Downingia		Species of Special Concern	G5	S1
<i>Draba crassa</i>	Thick-leaf Whitlow Grass		Species of Special Concern	G3	S2(WY)
<i>Draba densifolia</i>	Dense-leaf Draba		Species of Special Concern	G5	S2
<i>Draba fladnizensis</i>	White Arctic Draba		Species of Special Concern	G4	S1
<i>Draba fladnizensis</i> var <i>pattersonii</i>	White Arctic Whitlow-Grass		Species of Special Concern	G4T3?	S2(WY)
<i>Draba glabella</i>	Rock Whitlow-Grass		Species of Special Concern	G4G5	S1(WY)
<i>Draba globosa</i>	Rockcress Draba		Species of Special Concern	G3G4	S1(MT);S2(WY)
<i>Draba macounii</i>	Macoun's Draba		Species of Special Concern	G3G4	S1
<i>Draba paysonii</i> var <i>treleasii</i>	Trelease's Draba		Species of Special Concern	G5T4?	S1(WY)
<i>Draba pectinipila</i>	Comb-hair Whitlow-Grass		Species of Special Concern	G1Q	S1(WY)
<i>Draba porsildii</i>	Porsild's Draba		Species of Special Concern	G3G4	S1
<i>Draba porsildii</i> var <i>brevicula</i>	Little Snow Draba		Species of Special Concern	G3T1	S1(WY)
<i>Draba porsildii</i> var <i>porsildii</i>	Porsild's Whitlow-Grass		Species of Special Concern	G3T3	S2(WY)
<i>Draba ventosa</i>	Wind River Draba		Species of Special Concern	G3	S1
<i>Drosera anglica</i>	English Sundew		Species of Special Concern	G5	S2(MT);S1?(WY)
<i>Drosera linearis</i>	Linear-leaved Sundew		Species of Special Concern	G4	S1
<i>Dryas integrifolia</i>	Entire-leaved Avens		Species of Special Concern	G5	S1
<i>Dryopteris cristata</i>	Buckler Fern		Species of Special Concern	G5	S2
<i>Dryopteris expansa</i>	Spreading Woodfern		Species of Special Concern	G5	S1(WY)
<i>Elatine brachysperma</i>	Short-seeded Water-wort		Species of Special Concern	G5	SU
<i>Elatine californica</i>	California Waterwort		Species of Special Concern	G5	SU
<i>Eleocharis rostellata</i>	Beaked Spikerush		Species of Special Concern	G5	S2
<i>Eleocharis tenuis</i> var <i>borealis</i>	Boreal Spikerush		Species of Special Concern	G5T5	S1(WY)
<i>Elodea longivaginata</i>	Long Sheath Waterweed		Species of Special Concern	G4G5	S1
<i>Elymus flavescens</i>	Sand Wildrye		Species of Special Concern	G4	S1
<i>Elymus innovatus</i>	Northern Wild-rye		Species of Special Concern	G5	S1
<i>Epilobium palustre</i> var <i>palustre</i>	Swamp Willow Herb		Species of Special Concern	G5	S1S2(WY)
<i>Epipactis gigantea</i>	Giant Helleborine		Species of Special Concern	G4	S2(MT);S2(WY)
<i>Equisetum sylvaticum</i>	Woodland Horsetail		Species of Special Concern	G5	S1(WY)
<i>Eragrostis hypnoides</i>	Teal Love Grass		Species of Special Concern	G5	S1(WY)
<i>Eriastrum wilcoxii</i>	Wilcox Eriastrum		Species of Special Concern	G5	S1S2(WY)
<i>Erigeron allocotus</i>	Bighorn Fleabane		Species of Special Concern	G3	S3(WY)
<i>Erigeron asperugineus</i>	Idaho Fleabane		Species of Special Concern	G4	S1
<i>Erigeron eatonii</i> ssp <i>eatonii</i>	Eaton's Daisy		Species of Special Concern	G5T5	S1
<i>Erigeron evermannii</i>	Evermann Fleabane		Species of Special Concern	G4	S1
<i>Erigeron formosissimus</i> var <i>viscidus</i>	Beautiful Fleabane		Species of Special Concern	G5T4	S1
<i>Erigeron humilis</i>	Low Fleabane		Species of Special Concern	G4	S2(WY)
<i>Erigeron lackschewitzii</i>	Lackschewitz' Fleabane		Species of Special Concern	G3Q	S3
<i>Erigeron leiomerus</i>	Smooth Fleabane		Species of Special Concern	G4	S1
<i>Erigeron linearis</i>	Linearleaf Fleabane		Species of Special Concern	G5	S1
<i>Erigeron radicans</i>	Taprooted Fleabane		Species of Special Concern	G3	S1(WY)

<i>Erigeron tener</i>	Slender Fleabane		Species of Special Concern	G4	S1
<i>Eriogonum brevicaulum</i> var <i>canum</i>	Rabbit Buckwheat		Species of Special Concern	G3	S2(WY)
<i>Eriogonum caespitosum</i>	Mat Buckwheat		Species of Special Concern	G5	S1
<i>Eriogonum mancum</i>	Imperfect Wild Buckwheat		Species of Special Concern	G4	S1(WY)
<i>Eriogonum salsuginosum</i>	Smooth Buckwheat		Species of Special Concern	G4?	S1
<i>Eriogonum visherii</i>	Visher's Buckwheat		Species of Special Concern	G3	S1(MT);S2S3(ND)
<i>Eriophorum callitrix</i>	Sheathed Cotton-grass		Species of Special Concern	G5	S1(MT);S1(WY)
<i>Eriophorum chamissonis</i>	Russet Cotton-grass		Species of Special Concern	G5	S1S2(WY)
<i>Eriophorum gracile</i>	Slender Cottongrass		Species of Special Concern	G5	S2(MT);S1(WY)
<i>Eupatorium maculatum</i> var <i>bruneri</i>	Joe-pye Weed		Species of Special Concern	G5TU	S1
<i>Eupatorium occidentale</i>	Western Boneset		Species of Special Concern	G4	S2
<i>Euphrasia arctica</i> var <i>disjuncta</i>	Disjunct Eyebright		Species of Special Concern	G5	S1
<i>Eritrichium howardii</i>	Howard Forget-Me-Not		Species of Special Concern	G4	S1(WY)
<i>Eustoma grandiflorum</i>	Showy Prairie-gentian		Species of Special Concern	G5	S1
<i>Festuca hallii</i>	Hall's Fescue		Species of Special Concern	G3G4	S1(WY)
<i>Festuca vivipara</i>	Viviparous Fescue		Species of Special Concern	G4G5Q	S2
<i>Gayophytum humile</i>	Low Ground-smoke		Species of Special Concern	G5	S1(WY)
<i>Gentiana glauca</i>	Glaucous Gentian		Species of Special Concern	G4G5	S1
<i>Gentianella propinqua</i>	Four-part Gentian		Species of Special Concern	G5	S1(WY)
<i>Gentianopsis macounii</i>	Macoun's Gentian		Species of Special Concern	G5	S1
<i>Gentianopsis simplex</i>	Hiker's Gentian		Species of Special Concern	G4	S1(MT);S1(WY)
<i>Glandularia bipinnatifida</i>	Dakota Vervain		Species of Special Concern	G5	S1(WY)
<i>Glossopetalon nevadense</i>	Spiny Greenbush		Species of Special Concern	G5?Q	S1
<i>Gnaphalium microcephalum</i> var <i>therma</i>	White Cudweed		Species of Special Concern	G5T4Q	S1(WY)
<i>Goodyera repens</i>	Northern Rattlesnake-plantain		Species of Special Concern	G5	S3
<i>Gratiola ebracteata</i>	Bractless Hedge-hyssop		Species of Special Concern	G4	S1
<i>Grayia spinosa</i>	Spiny Hopsage		Species of Special Concern	G5	S2
<i>Grindelia howellii</i>	Howell's Gum-weed		Species of Special Concern	G3	S2S3
<i>Gymnosteris parvula</i>	Small-flower Gymnosteris		Species of Special Concern	G4	SH
<i>Halimolobos perplexa</i> var <i>lemhiensis</i>	Puzzling Rockcress		Species of Special Concern	G4T4	S1
<i>Haplopappus aberrans</i>	Idaho Golden-weed		Species of Special Concern	G3	S1
<i>Haplopappus carthamoides</i> var <i>subsquarrosus</i>	Beartooth Large-flowered Goldenweed		Species of Special Concern	G4G5T2T3	S2
<i>Haplopappus macronema</i> var <i>linearis</i>	Narrowleaf Goldenweed		Species of Special Concern	G4T3	S2(WY)
<i>Haplopappus macronema</i> var <i>macronema</i>	Discoid Goldenweed		Species of Special Concern	G4G5T4	S1
<i>Haplopappus nanus</i>	Dwarf Goldenweed		Species of Special Concern	G5	S1
<i>Haplopappus pygmaeus</i>	Pygmy Goldenweed		Species of Special Concern	G4	SH
<i>Helictotrichon mortonianum</i>	Alpine Oatgrass		Species of Special Concern	G4	S1(WY)
<i>Hemicarpha drummondii</i>	Drummond's Hemicarpha		Species of Special Concern	G4G5	SH
<i>Heteranthera dubia</i>	Water Star-grass		Species of Special Concern	G5	S1
<i>Heterocodon rariflorum</i>	Western Pearl-flower		Species of Special Concern	G5	S1
<i>Howellia aquatilis</i>	Water Howellia	LT	Species of Special Concern	G2	S2
<i>Hutchinsia procumbens</i>	Hutchinsia		Species of Special Concern	G5	S1

<i>Idaho scapigera</i>	Scalepod		Species of Special Concern	G5	S1
<i>Ipomopsis congesta</i> ssp <i>crebrifolia</i>	Ballhead Gilia		Species of Special Concern	G5T4?	S2
<i>Ipomopsis minutiflora</i>	Small-flower Standing-cypress		Species of Special Concern	G2G3	S1
<i>Ipomopsis spicata</i> ssp <i>robruthii</i>	Kirkpatrick's Ipomopsis		Species of Special Concern	G4?T2	S2(WY)
<i>Juncus acuminatus</i>	Tapered Rush		Species of Special Concern	G5	S1
<i>Juncus albescens</i>	Three-flowered Rush		Species of Special Concern	G5	S2
<i>Juncus covillei</i> var <i>covillei</i>	Coville's Rush		Species of Special Concern	G4G5T5	S1
<i>Juncus covillei</i> var <i>obtusatus</i>	Coville's Blunt Rush		Species of Special Concern	G4G5T4	S1
<i>Juncus filiformis</i>	Thread Rush		Species of Special Concern	G5	S1(WY)
<i>Juncus hallii</i>	Hall's Rush		Species of Special Concern	G4G5	S2
<i>Juncus triglumis</i> var <i>albescens</i>	Northern White Rush		Species of Special Concern	G5T5	S1(WY)
<i>Juncus triglumis</i> var <i>triglumis</i>	Three-flower Rush		Species of Special Concern	G5T5	S1(WY)
<i>Kalmia polifolia</i>	Pale Laurel		Species of Special Concern	G5	S1
<i>Kelloggia galioides</i>	Milk Kelloggia		Species of Special Concern	G5	S1(MT);S1(WY)
<i>Kobresia macrocarpa</i>	Large-fruited Kobresia		Species of Special Concern	G5	S1
<i>Kobresia schoenoides</i>	Siberian Kobresia		Species of Special Concern	G5	S1(WY)
<i>Kobresia simpliciuscula</i>	Simple Kobresia		Species of Special Concern	G5	S2(MT);S1(WY)
<i>Kochia americana</i>	Red Sage		Species of Special Concern	G5	S1
<i>Koenigia islandica</i>	Island Koenigia		Species of Special Concern	G4	S1(MT);S1(WY)
<i>Lagophylla ramosissima</i>	Slender Hareleaf		Species of Special Concern	G5	S1
<i>Lathyrus bijugatus</i>	Latah Tule Pea		Species of Special Concern	G4	S1
<i>Lathyrus lanszwertii</i> var <i>lanszwertii</i>	Nevada Sweetpea		Species of Special Concern	G4G5T4	S1(WY)
<i>Leptodactylon caespitosum</i>	Leptodactylon		Species of Special Concern	G3G4	S2
<i>Leptodactylon watsonii</i>	Watson's Prickly-phlox		Species of Special Concern	G3	S1(WY)
<i>Lesquerella carinata</i> var <i>languida</i>	Garnet Bladderpod		Species of Special Concern	G3G4T1	S1
<i>Lesquerella fremontii</i>	Fremont Bladderpod		Species of Special Concern	G2	S2(WY)
<i>Lesquerella humilis</i>	Bitterroot Bladderpod		Species of Special Concern	G1	S1
<i>Lesquerella lesicii</i>	Lesica's Bladderpod		Species of Special Concern	G1	S1
<i>Lesquerella paysonii</i>	Payson Bladderpod		Species of Special Concern	G3	S1
<i>Lesquerella pulchella</i>	Beautiful Bladderpod		Species of Special Concern	G2	S2
<i>Lewisia columbiana</i> var <i>wallowensis</i>	Columbia Lewisia		Species of Special Concern	G4T4	S1
<i>Lewisia pygmaea</i> var <i>nevadensis</i>	Nevada Bitterroot		Species of Special Concern	G4	S1
<i>Lilaea scilloides</i>	Flowering Quillwort		Species of Special Concern	G5?	S1
<i>Liparis loeselii</i>	Loesel's Twayblade		Species of Special Concern	G5	S1
<i>Listera convallaroides</i>	Broad-leaved Twayblade		Species of Special Concern	G5	S1(WY)
<i>Lobelia spicata</i>	Pale-spiked Lobelia		Species of Special Concern	G5	S1
<i>Lomatium attenuatum</i>	Absaroka Biscuitroot		Species of Special Concern	G3	S2(MT);S2(WY)
<i>Lomatium bicolor</i>	Wasatch Biscuitroot		Species of Special Concern	G4T3	S2(WY)
<i>Lomatium geyeri</i>	Geyer's Biscuitroot		Species of Special Concern	G3G4	S1
<i>Lomatium nuttallii</i>	Nuttall Desert-parsley		Species of Special Concern	G3G4	S1
<i>Lomatogonium rotatum</i>	Felwort		Species of Special Concern	G5	S1
<i>Lonicera caerulea</i> var <i>cauriana</i>	Western Honeysuckle		Species of Special Concern	G5	S1(WY)

<i>Lycopodium dendroideum</i>	Treelike Clubmoss		Species of Special Concern	G5	S1
<i>Lycopodium inundatum</i>	Northern Bog Clubmoss		Species of Special Concern	G5	S1
<i>Lycopodium lagopus</i>	Running Pine		Species of Special Concern	G5T?	S1
<i>Lycopodium sitchense</i>	Alaskan Clubmoss		Species of Special Concern	G5	S3
<i>Maianthemum canadense</i> var <i>interius</i>	Wild Lily-of-the-valley		Species of Special Concern	G5T4	SH
<i>Malacothrix torreyi</i>	Desert Dandelion		Species of Special Concern	G4	S1
<i>Melica smithii</i>	Smith Melic Grass		Species of Special Concern	G4	SH(WY)
<i>Mentzelia montana</i>	White-bract Stickleaf		Species of Special Concern	G4	SH
<i>Mentzelia nuda</i>	Bractless Mentzelia		Species of Special Concern	G5	S1
<i>Mentzelia pumila</i>	Dwarf Mentzelia		Species of Special Concern	G4	S2
<i>Mertensia bella</i>	Oregon Bluebells		Species of Special Concern	G4	S1
<i>Mimulus breviflorus</i>	Short-flowered Monkeyflower		Species of Special Concern	G4	S1
<i>Mimulus nanus</i>	Dwarf Purple Monkeyflower		Species of Special Concern	G5	S1
<i>Mimulus patulus</i>	Washington Monkeyflower		Species of Special Concern	G2Q	S1
<i>Mimulus primuloides</i>	Primrose Monkeyflower		Species of Special Concern	G4	S2
<i>Mimulus rubellus</i>	Ciliolate-toothed Monkey-flower		Species of Special Concern	G5	S1(WY)
<i>Mimulus tilingii</i>	Subalpine Monkey-flower		Species of Special Concern	G5	S1(WY)
<i>Monolepis pusilla</i>	Red Poverty-weed		Species of Special Concern	G5	S1(WY)
<i>Montiastrum lineare</i>	Linearleaf Miner's-lettuce		Species of Special Concern	G5	SH(WY)
<i>Muhlenbergia glomerata</i>	Marsh Muhly		Species of Special Concern	G4	S1(WY)
<i>Musineon vaginatum</i>	Sheathed Musineon		Species of Special Concern	G3?	S2(WY)
<i>Myriophyllum verticillatum</i>	Whorled Water-milfoil		Species of Special Concern	G5	S1(WY)
<i>Najas guadalupensis</i>	Guadalupe Water-nymph		Species of Special Concern	G5	S1
<i>Nama densum</i>	Nama		Species of Special Concern	G5	S1
<i>Nothocalais troximoides</i>	Weevil False-dandelion		Species of Special Concern	G5	S1(WY)
<i>Nuttallanthus texanus</i>	Blue Toadflax		Species of Special Concern	G4G5	S1
<i>Nymphaea tetragona</i>	Pygmy Water-lily		Species of Special Concern	G5	S1
<i>Nymphaea tetragona</i> ssp <i>leibergii</i>			Species of Special Concern	G5T5	S1
<i>Oenothera pallida</i> var <i>idahoensis</i>	Pale Evening-primrose		Species of Special Concern	G5T4Q	S1
<i>Ophioglossum pusillum</i>	Adder's Tongue		Species of Special Concern	G5	S2
<i>Orobanche corymbosa</i> var <i>corymbosa</i>	Flat-top Broomrape		Species of Special Concern	G4T4	S1(WY)
<i>Orogenia fusiformis</i>	Tapered-root Orogenia		Species of Special Concern	G5	S2
<i>Oxytheca dendroidea</i>	Tree-like Oxytheca		Species of Special Concern	G4	SH(WY)
<i>Oxytropis campestris</i> var <i>columbiana</i>	Columbia Crazyweed		Species of Special Concern	G5T3	S1
<i>Oxytropis deflexa</i> var <i>foliolosa</i>	Pendent-pod Crazyweed		Species of Special Concern	G5T?	S1
<i>Oxytropis parryi</i>	Parry's Crazyweed		Species of Special Concern	G5	S1
<i>Oxytropis podocarpa</i>	Stalked-pod Crazyweed		Species of Special Concern	G4	S1
<i>Papaver kluanensis</i>	Alpine Poppy		Species of Special Concern	G3?Q	S1(MT);S2(WY)
<i>Parrya nudicaulis</i>	Naked-stemmed Parrya		Species of Special Concern	G5	S2(WY)
<i>Pedicularis contorta</i> var <i>ctenophora</i>	Coil-beaked Lousewort		Species of Special Concern	G5T3	S2(WY)
<i>Pedicularis oederi</i>	Oeder's Lousewort		Species of Special Concern	G5	S1(WY)
<i>Pedicularis parryi</i> ssp <i>mogollonica</i>	Mogollon Lousewort		Species of Special Concern	G5T2Q	S1(WY)

<i>Pedicularis pulchella</i>	Mountain Lousewort		Species of Special Concern	G3	S2(WY)
<i>Pellaea glabella</i>	Smooth Cliffbrake		Species of Special Concern	G5	S4(ND)
<i>Penstemon absarokensis</i>	Absaroka Beardtongue		Species of Special Concern	G2	S2(WY)
<i>Penstemon angustifolius</i>	Narrowleaf Penstemon		Species of Special Concern	G5	S2
<i>Penstemon attenuatus</i> var <i>militaris</i>	Taper-leaved Beardtongue		Species of Special Concern	G4T4	S1
<i>Penstemon globosus</i>	Globe Beardtongue		Species of Special Concern	G4	S2
<i>Penstemon grandiflorus</i>	Large Flowered Beardtongue		Species of Special Concern	G5?	S1
<i>Penstemon lemhiensis</i>	Lemhi Beardtongue		Species of Special Concern	G3	S2
<i>Penstemon payettensis</i>	Payette Beardtongue		Species of Special Concern	G4	S1
<i>Penstemon paysoniorum</i>	Payson Beardtongue		Species of Special Concern	G3	S3(WY)
<i>Penstemon whippleanus</i>	Whipple's Beardtongue		Species of Special Concern	G5	S1
<i>Petasites frigidus</i> var <i>nivalis</i>	Palmate-leaved Coltsfoot		Species of Special Concern	G5T?	S1
<i>Phacelia incana</i>	Hoary Phacelia		Species of Special Concern	G3	S2
<i>Phacelia scopulina</i>	Dwarf Phacelia		Species of Special Concern	G4	SH
<i>Phacelia thermalis</i>	Hot Spring Phacelia		Species of Special Concern	G3G4	S1
<i>Phippsia algida</i>	Ice Grass		Species of Special Concern	G5	S2(MT);S1(WY)
<i>Phlox alyssifolia</i>	Alyssum-leaved Phlox		Species of Special Concern	G5	S1S2(ND)
<i>Phlox andicola</i>	Plains Phlox		Species of Special Concern	G4	S2
<i>Phlox kelseyi</i> var <i>missoulensis</i>	Missoula Phlox		Species of Special Concern	G2	S2
<i>Phlox pungens</i>	Beaver Rim Phlox		Species of Special Concern	G2	S2(WY)
<i>Physaria brassicoides</i>	Double Bladderpod		Species of Special Concern	G5	S1
<i>Physaria didymocarpa</i> var <i>lanata</i>	Woolly Twinpod		Species of Special Concern	G5T2	SU
<i>Physaria lanata</i>	Woolly Twinpod		Species of Special Concern	G5T2	S2(WY)
<i>Physaria saximontana</i> var <i>saximontana</i>	Rocky Mountain Twinpod		Species of Special Concern	G3T2	S2(WY)
<i>Plagiobothrys leptocladus</i>	Slender-branched Popcorn-flower		Species of Special Concern	G4	S1
<i>Poa curta</i>	Short-leaved Bluegrass		Species of Special Concern	G4	S1
<i>Poa laxa</i> ssp <i>banffiana</i>	Banff Loose-flowered Bluegrass		Species of Special Concern	G5?T1	S1
<i>Polygonum douglasii</i> ssp <i>austinae</i>	Austin's Knotweed		Species of Special Concern	G5T4	S2S3
<i>Polystichum kruckebergii</i>	Kruckeberg's Sword-fern		Species of Special Concern	G4	S1
<i>Polystichum scopulinum</i>	Mountain Holly-fern		Species of Special Concern	G5	S1
<i>Potamogeton amplifolius</i>	Large-leaf Pondweed		Species of Special Concern	G5	S1(WY)
<i>Potamogeton obtusifolius</i>	Blunt-leaved Pondweed		Species of Special Concern	G5	S2
<i>Potamogeton robbinsii</i>	Flatleaf Pondweed		Species of Special Concern	G5	S1(WY)
<i>Potamogeton strictifolius</i>	Strict-leaved Pondweed		Species of Special Concern	G5	S1(WY)
<i>Potentilla brevifolia</i>	Short-leaved Cinquefoil		Species of Special Concern	G4	S1
<i>Potentilla hyparctica</i>	Low Arctic Cinquefoil		Species of Special Concern	G4G5	S1(MT);S1(WY)
<i>Potentilla plattensis</i>	Platte Cinquefoil		Species of Special Concern	G4	S1
<i>Potentilla quinquefolia</i>	Five-leaf Cinquefoil		Species of Special Concern	G5T4	S2
<i>Potentilla subjuga</i>	Twinleaf Cinquefoil		Species of Special Concern	G3?	S2(WY)
<i>Potentilla uniflora</i>	One-flowered Cinquefoil		Species of Special Concern	G5	S1(MT);S1(WY)
<i>Primula alcalina</i>	Idaho Primrose		Species of Special Concern	G1	SX
<i>Primula incana</i>	Mealy Primrose		Species of Special Concern	G4G5	S2(MT);S1S2(ND)

<i>Prunus pumila</i>	Sand Cherry		Species of Special Concern	G5	S1
<i>Psilocarphus brevissimus</i> var <i>brevissimus</i>	Dwarf Woolly-heads		Species of Special Concern	G5T?	S2
<i>Psoralea hypogaea</i>	Little Indian Breadroot		Species of Special Concern	G5T4	S2
<i>Puccinellia cusickii</i>	Cusick's Alkali-grass		Species of Special Concern	G3G4Q	S1(WY)
<i>Puccinellia lemmonii</i>	Lemmon's Alkaligrass		Species of Special Concern	G4	S1
<i>Pyrocoma clementis</i>	Tranquil Goldenweed		Species of Special Concern	G3G4	S1(WY)
<i>Pyrocoma integrifolia</i>	Entire-leaf Goldenweed		Species of Special Concern	G4	S1(WY)
<i>Quercus macrocarpa</i>	Bur Oak		Species of Special Concern	G5	S1
<i>Ranunculus cardiophyllus</i>	Heart-leaved Buttercup		Species of Special Concern	G4G5	S2
<i>Ranunculus gelidus</i>	Arctic Buttercup		Species of Special Concern	G4	S1
<i>Ranunculus hyperboreus</i>	High-arctic Buttercup		Species of Special Concern	G5	S1
<i>Ranunculus jovis</i>	Jove's Buttercup		Species of Special Concern	G4	S2
<i>Ranunculus orthorhynchus</i> var <i>platyphyllus</i>	Straightbeak Buttercup		Species of Special Concern	G5T5	S1
<i>Ranunculus pedatifidus</i>	Northern Buttercup		Species of Special Concern	G5	S1
<i>Ranunculus verecundus</i>	Timberline Buttercup		Species of Special Concern	G5	S2(MT);S1(WY)
<i>Ribes cognatum</i>	Shinyleaf Gooseberry		Species of Special Concern	G4Q	S1
<i>Ribes laxiflorum</i>	Trailing Black Currant		Species of Special Concern	G5	S1
<i>Ribes triste</i>	Swamp Red Currant		Species of Special Concern	G5	S1
<i>Ribes velutinum</i>	Desert Gooseberry		Species of Special Concern	G5	S1
<i>Rorippa calycina</i>	Persistent-sepal Yellow-cress		Species of Special Concern	G3	S1(MT);SH(ND);S3(WY)
<i>Rotala ramosior</i>	Toothcup		Species of Special Concern	G5	S1
<i>Rubus acaulis</i>	Nagoonberry		Species of Special Concern	G5	S1(WY)
<i>Sagina nivalis</i>	Arctic Pearlwort		Species of Special Concern	G5	S1
<i>Salix barrattiana</i>	Barratt's Willow		Species of Special Concern	G5	S1(MT);S1(WY)
<i>Salix candida</i>	Hoary Willow		Species of Special Concern	G5	S2(WY)
<i>Salix eriocephala</i> var <i>mackenzieana</i>	Mackenzie's Willow		Species of Special Concern	G5T4	S1(WY)
<i>Salix farriae</i>	Farr's Willow		Species of Special Concern	G4	S1S2(WY)
<i>Salix serissima</i>	Autumn Willow		Species of Special Concern	G4	S2
<i>Salix wolfii</i> var <i>wolfii</i>	Wolf's Willow		Species of Special Concern	G5?T4	S3
<i>Sambucus canadensis</i>	Common Elderberry		Species of Special Concern	G5	S1(WY)
<i>Sambucus cerulea</i> var <i>cerulea</i>	Blue Elderberry		Species of Special Concern	G5?	S1(WY)
<i>Sanicula graveolens</i>	Sierra Sanicle		Species of Special Concern	G4	S1(WY)
<i>Satureja douglasii</i>	Yerba Buena		Species of Special Concern	G4	S2
<i>Saussurea densa</i>	Dwarf Saw-wort		Species of Special Concern	G3G5	S2
<i>Saussurea weberi</i>	Weber's Saw-wort		Species of Special Concern	G3Q	S1(MT);S2(WY)
<i>Saxifraga apetala</i>	Tiny Swamp Saxifrage		Species of Special Concern	G3Q	S2
<i>Saxifraga hirculus</i>	Yellow Marsh Saxifrage		Species of Special Concern	G5	S1
<i>Saxifraga tempestiva</i>	Storm Saxifrage		Species of Special Concern	G2	S2
<i>Scheuchzeria palustris</i>	Pod Grass		Species of Special Concern	G5	S2
<i>Scirpus atrocinctus</i>	Cottongrass Bulrush		Species of Special Concern	G5	S1(WY)
<i>Scirpus cespitosus</i>	Tufted Club-rush		Species of Special Concern	G5	S2
<i>Scirpus heterochaetus</i>	Slender Bulrush		Species of Special Concern	G5	S1(MT);S1(WY)

<i>Scirpus hudsonianus</i>	Hudson's Bay Bulrush		Species of Special Concern	G5	S1
<i>Scirpus nevadensis</i>	Nevada Bulrush		Species of Special Concern	G4	S1(WY)
<i>Scirpus pumilus</i> ssp <i>rollandii</i>	Small Clubrush		Species of Special Concern	G3Q	S1
<i>Scirpus rollandii</i>	Rolland Bulrush		Species of Special Concern	G3Q	S1(WY)
<i>Scirpus subterminalis</i>	Water Bulrush		Species of Special Concern	G4G5	S2
<i>Scolochloa festucacea</i>	Sprangle-top		Species of Special Concern	G5	SH(WY)
<i>Sedum stenopetalum</i>	Narrow-petal Stonecrop		Species of Special Concern	G4G5	S1(WY)
<i>Selaginella selaginoides</i>	Low Spike-moss		Species of Special Concern	G5	S2
<i>Selaginella watsonii</i>	Watson's Spike-moss		Species of Special Concern	G4	S1(WY)
<i>Senecio amplexans</i> var <i>holmii</i>	Clasping Groundsel		Species of Special Concern	G4T?	S1
<i>Senecio eremophilus</i> var <i>eremophilus</i>	Desert Groundsel		Species of Special Concern	G5T5	S1
<i>Senecio fuscatus</i>	Twice-hairy Groundsel		Species of Special Concern	G4	S2(WY)
<i>Senecio indecorus</i>	Plains Ragwort		Species of Special Concern	G5	S1(WY)
<i>Senecio pauciflorus</i>	Few-flowered Butterweed		Species of Special Concern	G4G5	S1
<i>Shoshonea pulvinata</i>	Shoshonea		Species of Special Concern	G2G3	S1(MT);S2(WY)
<i>Sidalcea oregana</i>	Oregon Checker-mallow		Species of Special Concern	G5	S1
<i>Silene kingii</i>	King's Champion		Species of Special Concern	G2G4Q	S1(WY)
<i>Silene repens</i> var <i>australis</i>	Creeping Champion		Species of Special Concern	G5T?	S1(WY)
<i>Silene spaldingii</i>	Spalding's Champion	P	Species of Special Concern	G2	S1
<i>Sisyrinchium septentrionale</i>	Blue-eyed Grass		Species of Special Concern	G3G4	S1
<i>Solidago ptarmicoides</i>	Prairie Aster		Species of Special Concern	G5	S1
<i>Solidago sparsiflora</i>	Few-flowered Goldenrod		Species of Special Concern	G?	S1
<i>Sparganium eurycarpum</i>	Large Bur-reed		Species of Special Concern	G5	S1(WY)
<i>Sparganium minimum</i>	Small Bur-reed		Species of Special Concern	G5	S1(WY)
<i>Sphaeralcea munroana</i>	White-stemmed Globe-mallow		Species of Special Concern	G4	S1
<i>Sphaeromeria argentea</i>	Chicken Sage		Species of Special Concern	G3?	S2
<i>Sphenopholis intermedia</i>	Slender Wedgegrass		Species of Special Concern	G5	SH
<i>Spiranthes diluvialis</i>	Ute Ladies' Tresses	LT	Species of Special Concern	G2	S2
<i>Sporobolus asper</i>	Longleaf Dropseed		Species of Special Concern	G5	SH
<i>Sporobolus neglectus</i>	Small Dropseed		Species of Special Concern	G5	SU(MT);S1(WY)
<i>Stellaria crassifolia</i>	Fleshy Stitchwort		Species of Special Concern	G5	S1
<i>Stellaria jamesiana</i>	James Stitchwort		Species of Special Concern	G5	S1
<i>Stephanomeria spinosa</i>	Spiny Skeletonweed		Species of Special Concern	G4	S1
<i>Stipa lettermanii</i>	Letterman's Needlegrass		Species of Special Concern	G5	S1
<i>Suckleya suckleyana</i>	Poison Suckleya		Species of Special Concern	G5	SU
<i>Sullivantia hapemanii</i> var <i>hapemanii</i>	Wyoming Sullivantia		Species of Special Concern	G3T3	S2(MT);S3(WY)
<i>Talinum parviflorum</i>	Small-flowered Flame		Species of Special Concern	G5	S1(WY)
<i>Taraxacum eriophorum</i>	Rocky Mountain Dandelion		Species of Special Concern	G4	S2
<i>Thalictrum alpinum</i>	Alpine Meadowrue		Species of Special Concern	G5	S2
<i>Thelesperma sudnudum</i> var. <i>marginatum</i>	Greenthread		Species of Special Concern	G5T5	S2S3(ND)
<i>Thelypodium paniculatum</i>	Northwestern Thelypody		Species of Special Concern	G2G3	SH
<i>Thelypodium sagittatum</i> ssp <i>sagittatum</i>	Slender Thelypody		Species of Special Concern	G4T?	S2

<i>Thelypteris phegopteris</i>	Northern Beechfern		Species of Special Concern	G5	S2
<i>Thlaspi parviflorum</i>	Small-flowered Pennycress		Species of Special Concern	G3	S2
<i>Tofieldia pusilla</i>	Small Tofieldia		Species of Special Concern	G5	S2
<i>Townsendia condensata</i>	Cushion Townsendia		Species of Special Concern	G4	S2
<i>Townsendia condensata</i> var <i>anomala</i>	North Fork Easter Daisy		Species of Special Concern	G4T2	S2(WY)
<i>Townsendia florifer</i>	Showy Townsendia		Species of Special Concern	G5	S1(MT);SH(WY)
<i>Trifolium cyathiferum</i>	Cup Clover		Species of Special Concern	G4	S1
<i>Trifolium eriocephalum</i> ssp <i>arcuatum</i>	Woolly-head Clover		Species of Special Concern	G4T3?	S2
<i>Trifolium haydenii</i>	Hayden Clover		Species of Special Concern	G1	S1(WY)
<i>Trifolium gymnocarpon</i>	Hollyleaf Clover		Species of Special Concern	G4	S2
<i>Triodanis leptocarpa</i>	Slim-Pod Venus' Looking-glass		Species of Special Concern	G5?	S1(WY)
<i>Utricularia intermedia</i>	Flat-leaved Bladderwort		Species of Special Concern	G5	S1
<i>Utricularia minor</i>	Lesser Bladderwort		Species of Special Concern	G5	S2(WY)
<i>Vaccinium myrtilloides</i>	Velvetleaf Blueberry		Species of Special Concern	G5	S1
<i>Vaccinium myrtilillus</i> var <i>oreophilum</i>	Dwarf Bilberry		Species of Special Concern	G5T?	S1(WY)
<i>Veratrum californicum</i>	California False-hellebore		Species of Special Concern	G5	S1
<i>Viburnum edula</i>	Squashberry		Species of Special Concern	G5	S1(WY)
<i>Viburnum lentago</i>	Nannyberry		Species of Special Concern	G5	S1
<i>Viguiera multiflora</i>	Many-flowered Viguiera		Species of Special Concern	G4G5	S1
<i>Viola renifolia</i>	Kidney-leaf White Violet		Species of Special Concern	G5	S3
<i>Waldsteinia idahoensis</i>	Idaho Barren Strawberry		Species of Special Concern	G3	S1
<i>Wolffia columbiana</i>	Columbia Water-meal		Species of Special Concern	G5	S2
<i>Zizia aurea</i>	Golden Alexanders		Species of Special Concern	G5	SH
Non-Vascular Plants					
<i>Aloina brevirostris</i>			Species of Special Concern	G3G5	SH
<i>Amblyodon dealbatus</i>			Species of Special Concern	G3G5	SH
<i>Bartramia stricta</i>			Species of Special Concern	G?	S1
<i>Brachythecium reflexum</i>			Species of Special Concern	G4G5	SH
<i>Brachythecium turgidum</i>			Species of Special Concern	G4	S1
<i>Bryum calobryoides</i>			Species of Special Concern	G3	SH
<i>Bryum calophyllum</i>			Species of Special Concern	G?	SH
<i>Bryum dichotomum</i>			Species of Special Concern	G5?	S1
<i>Bryum lonchocaulon</i>			Species of Special Concern	G?	S1
<i>Bryum pallens</i>			Species of Special Concern	G4G5	S1
<i>Bryum schleicheri</i>			Species of Special Concern	G?	S1
<i>Callicladium haldanianum</i>			Species of Special Concern	G5	SH
<i>Calliergon richardsonii</i>			Species of Special Concern	G3	S1
<i>Calliergon trifarium</i>			Species of Special Concern	G4	S1
<i>Calliergonella cuspidata</i>			Species of Special Concern	G5	S1
<i>Catoscopium nigratum</i>			Species of Special Concern	G4G5	S1
<i>Cinclidium stygium</i>			Species of Special Concern	G5	S1

<i>Crumia latifolia</i>			Species of Special Concern	G3	S1
<i>Cynodontium tenellum</i>			Species of Special Concern	G?	SH
<i>Dendroalsia abietina</i>			Species of Special Concern	G4	SH
<i>Desmatodon cernuus</i>			Species of Special Concern	G3G5	SH
<i>Desmatodon heimii</i>			Species of Special Concern	G5	S1
<i>Dichodontium olympicum</i>			Species of Special Concern	G?	S1
<i>Dicranella grevilleana</i>			Species of Special Concern	G?	S1
<i>Dicranella heteromalla</i>			Species of Special Concern	G?	S1
<i>Dicranoweisia cirrata</i>			Species of Special Concern	G4	S1
<i>Dicranum acutifolium</i>			Species of Special Concern	G?	S1
<i>Dicranum fragilifolium</i>			Species of Special Concern	G4G5	S1
<i>Dicranum spadiceum</i>			Species of Special Concern	G?	S1
<i>Didymodon fallax</i> var <i>reflexus</i>			Species of Special Concern	G5T5?	S1
<i>Didymodon rigidulus</i> var <i>gracilis</i>			Species of Special Concern	G5T5?	S1
<i>Didymodon vinealis</i> var <i>brachyphyllus</i>			Species of Special Concern	G5T?	S1
<i>Distichium inclinatum</i>			Species of Special Concern	G4G5	S1
<i>Entosthodon rubiginosus</i>			Species of Special Concern	G2G3	SH
<i>Eucladium verticillatum</i>			Species of Special Concern	G4	S1
<i>Eurhynchium pulchellum</i> var <i>barnesii</i>			Species of Special Concern	G5T?	S1
<i>Fabronia pusilla</i>			Species of Special Concern	G5?	S1
<i>Fissidens fontanus</i>			Species of Special Concern	G5	S1
<i>Funaria americana</i>			Species of Special Concern	G2G3	SH
<i>Grimmia brittoniae</i>			Species of Special Concern	G1	S1
<i>Grimmia incurva</i>			Species of Special Concern	G4G5	S1
<i>Grimmia mollis</i>			Species of Special Concern	G3G5	S1
<i>Herzogiella striatella</i>			Species of Special Concern	G4G5	S1
<i>Herzogiella turfacea</i>			Species of Special Concern	G4G5	S1
<i>Hygroamblystegium noterophilum</i>			Species of Special Concern	G4	S1
<i>Hygrohypnum cochlearifolium</i>			Species of Special Concern	G?	S1
<i>Hypnum callichroum</i>			Species of Special Concern	G?	S1
<i>Kiaeria blyttii</i>			Species of Special Concern	G5	S1
<i>Kiaeria falcata</i>			Species of Special Concern	G5	S1
<i>Kiaeria starkei</i>			Species of Special Concern	G5	S1
<i>Leucolepis acanthoneuron</i>			Species of Special Concern	G4	S1
<i>Meesia longiseta</i>			Species of Special Concern	G3G4	S1
<i>Meesia triquetra</i>			Species of Special Concern	G5	S1
<i>Meesia uliginosa</i>			Species of Special Concern	G4	S1
<i>Mielichhoferia macrocarpa</i>			Species of Special Concern	G2?	S1
<i>Myurella tenerrima</i>			Species of Special Concern	G3?	S1
<i>Neckera douglasii</i>			Species of Special Concern	G4	S1
<i>Neckera pennata</i>			Species of Special Concern	G5	S1
<i>Oligotrichum aligerum</i>			Species of Special Concern	G5	S1

<i>Orthotrichum praemorsum</i>			Species of Special Concern	G?	S1
<i>Oxystegus tenuirostris</i>			Species of Special Concern	G5	SH
<i>Paludella squarrosa</i>			Species of Special Concern	G3G5	S1
<i>Paraleucobryum nerve</i>			Species of Special Concern	G5?	S1
<i>Paraleucobryum longifolium</i>			Species of Special Concern	G5	S1
<i>Phascum cuspidatum</i>			Species of Special Concern	G5	S1
<i>Physcomitrium hookeri</i>			Species of Special Concern	G2G4	SH
<i>Physcomitrium pyriforme</i>			Species of Special Concern	G5	SU
<i>Plagiobryum demissum</i>			Species of Special Concern	G?	S1
<i>Plagiobryum zieri</i>			Species of Special Concern	G3G4	S1
<i>Platyhypnidium riparioides</i>			Species of Special Concern	G5	S1
<i>Pohlia drummondii</i>			Species of Special Concern	G3G4	S1
<i>Pohlia obtusifolia</i>			Species of Special Concern	G?	S1
<i>Pohlia vexans</i>			Species of Special Concern	G?	SH
<i>Polytrichum lyallii</i>			Species of Special Concern	G?	S1
<i>Porotrichum bigelovii</i>			Species of Special Concern	G4	S1
<i>Pseudocalliergon turgescens</i>			Species of Special Concern	G3G5	S1
<i>Pseudocrossidium obtusulum</i>			Species of Special Concern	G?	S1
<i>Pterygoneurum lamellatum</i>			Species of Special Concern	G?	S1
<i>Pterygoneurum subsessile</i>			Species of Special Concern	G4?	S1
<i>Ptychomitrium gardneri</i>			Species of Special Concern	G4	S1
<i>Racomitrium aquaticum</i>			Species of Special Concern	G?	S1
<i>Racomitrium brevipes</i>			Species of Special Concern	G?	S1
<i>Racomitrium pygmaeum</i>			Species of Special Concern	G?	S1
<i>Sarmenthyppnum sarmentosum</i>			Species of Special Concern	G4G5	S1
<i>Schistostega pennata</i>			Species of Special Concern	G4	S1
<i>Scorpidium scorpioides</i>			Species of Special Concern	G4G5	S1
<i>Seligeria donniana</i>			Species of Special Concern	G4G5	S1
<i>Sphagnum centrale</i>			Species of Special Concern	G5	S1
<i>Sphagnum compactum</i>			Species of Special Concern	G5	S1
<i>Sphagnum contortum</i>			Species of Special Concern	G5	S1
<i>Sphagnum fallax</i>			Species of Special Concern	G5	S1
<i>Sphagnum fimbriatum</i>			Species of Special Concern	G5	S1
<i>Sphagnum girgensohnii</i>			Species of Special Concern	G5	S1
<i>Sphagnum magellanicum</i>			Species of Special Concern	G5	S1
<i>Sphagnum mendocinum</i>			Species of Special Concern	G4	S1
<i>Sphagnum platyphyllum</i>			Species of Special Concern	G5	S1
<i>Sphagnum riparium</i>			Species of Special Concern	G5	S1
<i>Sphagnum subnitens</i>			Species of Special Concern	G5	S1
<i>Sphagnum wulfianum</i>			Species of Special Concern	G5	S1
<i>Stegonia latifolia</i>			Species of Special Concern	G?	S1
<i>Tayloria acuminata</i>			Species of Special Concern	G3G4	SH

<i>Tayloria lingulata</i>			Species of Special Concern	G3G5	S1
<i>Tayloria serrata</i>			Species of Special Concern	G4	S1
<i>Tetraplodon angustatus</i>			Species of Special Concern	G3?	S1
<i>Thamnobryum neckeroides</i>			Species of Special Concern	G?	SH
<i>Tortula bartramii</i>			Species of Special Concern	G2G4	S1
<i>Tortula caninervis</i>			Species of Special Concern	G?	S1
<i>Tortula muralis</i>			Species of Special Concern	G5	S1
<i>Tortula norvegica</i>			Species of Special Concern	G5	S1
<i>Tortula papillosa</i>			Species of Special Concern	G5	S1
<i>Trachybryum megaptilum</i>			Species of Special Concern	G4	S1
<i>Warnstorfia exannulata</i>			Species of Special Concern	G5	S1
<i>Bryoria subdivergens</i>			Species of Special Concern	G2	S1
<i>Cetraria subalpina</i>			Species of Special Concern	G2G3	S1
<i>Collema curtisporum</i>			Species of Special Concern	G1	S1
Watch Species					
Vascular Plants					
<i>Achillea sibirica</i>	Siberian Yarrow		Watch Species	G5?	SU
<i>Acorus americanus</i>	Sweetflag		Watch Species	G5	SU
<i>Agastache foeniculum</i>	Lavender Hyssop		Watch Species	G4G5	SU
<i>Agoseris lackschewitzii</i>	Pink Agoseris		Watch Species	G4Q	S3(MT);S3(WY)
<i>Agrimonia gryposepala</i>	Tall Hairy Groovebur		Watch Species	G5	SU(MT);S1(WY)
<i>Agrostis borealis</i>	Northern Bentgrass		Watch Species	G5	SU
<i>Amaranthus californicus</i>	California Amaranth		Watch Species	G4	SA
<i>Ambrosia acanthicarpa</i>	Flat-spine Bursage		Watch Species	G5	S4
<i>Ambrosia tomentosa</i>	Skeleton-leaf Bursage		Watch Species	G4	SU
<i>Amsinckia lycopsoides</i>	Bugloss Fiddle-neck		Watch Species	G?	SA
<i>Antennaria aromatica</i>	Aromatic Everlasting		Watch Species	G3G4	S3S4(MT);S2(WY)
<i>Antennaria neodioica</i> ssp <i>neodioica</i>	Northern Pussytoes		Watch Species	G4G5T?	SU
<i>Antennaria pulcherrima</i>	Showy Pussy-toes		Watch Species	G4G5	SU
<i>Arabis sparsiflora</i> var <i>columbiana</i>	Elegant Columbian Rockcress		Watch Species	G5TU	SU
<i>Arabis sparsiflora</i> var <i>subvillosa</i>			Watch Species	G5T?	SU
<i>Artemisia longiloba</i>	Alkali Sagebrush		Watch Species	G5T4	SR
<i>Artemisia porteri</i>	Porter's Sagebrush		Watch Species	G2	S2(WY)
<i>Artemisia tilesii</i> ssp <i>unalaschensis</i>	Aleutian Mugwort		Watch Species	G5T3T4	SU
<i>Aster foliaceus</i> var <i>lyallii</i>			Watch Species	G3?	SR
<i>Aster simplex</i> var <i>ramosissimus</i>	Panicked Aster		Watch Species	G5T?	SU
<i>Astragalus australis</i>	Indian Milkvetch		Watch Species	G5	S2S3(ND)
<i>Astragalus chamaeleuce</i>	Ground Milkvetch		Watch Species	G5	S3
<i>Astragalus kentrophyta</i> var <i>kentrophyta</i>			Watch Species	G5T4	S3
<i>Astragalus lentiginosus</i> var <i>salinus</i>	Sodaville Milk-vetch		Watch Species	G5T5	S3
<i>Astragalus leptaleus</i>	Park Milkvetch		Watch Species	G4	S3

<i>Astragalus miser</i> var <i>crispatus</i>	A Milk-vetch		Watch Species	G5T3?	SU
<i>Astragalus platytropis</i>	Broad-keeled Milkvetch		Watch Species	G5	S3
<i>Astragalus racemosus</i> var <i>racemosus</i>			Watch Species	G5T5	SU
<i>Bidens comosa</i>	Threelobed Beggarticks		Watch Species	G5	SU
<i>Bidens frondosa</i>			Watch Species	G5	SU
<i>Bidens vulgata</i> var <i>schizantha</i>	Tall Bur-marigold		Watch Species	G5T?	SU
<i>Botrychium minganense</i>	Mingan Island Moonwort		Watch Species	G4	S3
<i>Botrychium</i> sp 2			Watch Species	G?	SU
<i>Botrychium</i> sp 3			Watch Species	G?	SU
<i>Botrychium</i> sp 4			Watch Species	G?	SU
<i>Botrychium</i> sp 5			Watch Species	G?	SU
<i>Botrychium</i> x <i>watertonense</i>	Waterton Moonwort		Watch Species	HYB	HYB
<i>Calamagrostis koelerioides</i>	Dense Pine Reed-grass		Watch Species	G5	SU
<i>Calamagrostis scopulorum</i>	Ditch Reed-grass		Watch Species	G5	SU
<i>Calamagrostis tweedyi</i>	Cascade Reedgrass		Watch Species	G2G3	S3
<i>Camissonia tanacetifolia</i>	Tansy-leaf Suncup		Watch Species	G5	SU
<i>Cardamine rupicola</i>	Cliff Toothwort		Watch Species	G3	S3
<i>Carex aenea</i>	Bronze Sedge		Watch Species	G5	SU
<i>Carex brunnescens</i>			Watch Species	G5	SU
<i>Carex chalciolepis</i>	Copper-scale Sedge		Watch Species	G5T?	SU
<i>Carex ebenea</i>	Ebony Sedge		Watch Species	G5	SU
<i>Carex eburnea</i>	Ivory Sedge		Watch Species	G5	SU
<i>Carex jonesii</i>	Jones' Sedge		Watch Species	G5	SU
<i>Carex lacustris</i>	Lake-bank Sedge		Watch Species	G5	SU
<i>Carex luzulina</i> var <i>atropurpurea</i>	Black And Purple Sedge		Watch Species	G5T3	SU
<i>Carex microglochin</i>	A Sedge		Watch Species	G5?	SU
<i>Carex misandra</i>	Short-leaf Sedge		Watch Species	G5	S3
<i>Carex nelsonii</i>	Nelson's Sedge		Watch Species	G3?	SU
<i>Carex neurophora</i>	Alpine Nerved Sedge		Watch Species	G4	S3
<i>Carex pelocarpa</i>			Watch Species	G4?	SU
<i>Carex stramineiformis</i>	Mt. Shasta Sedge		Watch Species	G4	SU
<i>Carex torreyi</i>	Torrey's Sedge		Watch Species	G4	S3
<i>Castilleja crista-galli</i>	Greater Red Indian Paintbrush		Watch Species	G3?	SU
<i>Castilleja nivea</i>	Snow Indian Paintbrush		Watch Species	G3	SU
<i>Castilleja pilosa</i> var <i>longispica</i>	Parrot-head Indian Paintbrush		Watch Species	G4?T4	S3
<i>Castilleja rustica</i>	Rustic Indian Paintbrush		Watch Species	G4G5T3T4	S3
<i>Chrysothamnus linifolius</i>	Lineleaf Rabbitbrush		Watch Species	G5	S3
<i>Cirsium pulcherrimum</i>			Watch Species	G5	SU
<i>Claytonia cordifolia</i>	Heart-leaf Springbeauty		Watch Species	G5	SU
<i>Collomia debilis</i> var <i>camporum</i>			Watch Species	G5T3	SU
<i>Conimitella williamsii</i>			Watch Species	G3	SU
<i>Cordylanthus capitatus</i>	Yakima Bird's-beak		Watch Species	G4	SU

<i>Cryptantha flavocolata</i>	Pale Yellow Cryptantha		Watch Species	G5	S3
<i>Cryptantha humilis</i>	Cryptantha		Watch Species	G4?	SU
<i>Cryptogramma cascadenis</i>			Watch Species	G5	SU
<i>Cuscuta pentagona</i> var <i>pentagona</i>			Watch Species	G5T5	SU
<i>Cymopterus hendersonii</i>	Henderson's Pteryxia		Watch Species	G5	S1
<i>Cypripedium x columbianum</i>			Watch Species	HYB	HYB
<i>Delphinium bicolor</i> ssp <i>calicicola</i>	Limestone Larkspur		Watch Species	G4G5T3	S3
<i>Delphinium burkei</i>	Meadow Larkspur		Watch Species	G4	SU
<i>Delphinium geyeri</i>	Geyer's Larkspur		Watch Species	G5	SU
<i>Draba daviesiae</i>	Bitterroot Draba		Watch Species	G3	S3
<i>Draba lonchocarpa</i> var <i>exigua</i>	Lance-pod Whitlowgrass		Watch Species	G4T3?	SU
<i>Draba</i> sp 1	Undescribed Draba		Watch Species	G3G4	S3
<i>Elatine americana</i>	American Water-wort		Watch Species	G4	SU
<i>Eleocharis bella</i>	Delicate Spikerush		Watch Species	G5	SU
<i>Eleocharis flavescens</i>	Pale Spikerush		Watch Species	G5	SU
<i>Eleocharis xyridiformis</i>	Creeping Spike-rush		Watch Species	G4Q	SU
<i>Equisetum x ferrissii</i>	Horsetail (hybrid)		Watch Species	HYB	HYB
<i>Equisetum x trachyodon</i>	Horsetail (hybrid)		Watch Species	HYB	HYB
<i>Erigeron allocotus</i>	Big Horn Fleabane		Watch Species	G3	S3
<i>Erigeron coulteri</i>	Coulter Fleabane		Watch Species	G5	SU(MT);S2(WY)
<i>Erigeron flabellifolius</i>	Fan-leaved Fleabane		Watch Species	G3	S3
<i>Erigeron flagellaris</i>	Running Fleabane		Watch Species	G5	SU
<i>Eriogonum capistratum</i> var <i>muhlickii</i>	Muhlick's Buckwheat		Watch Species	G4T?	S3
<i>Eriogonum chrysocephalum</i>	A Wild-buckwheat		Watch Species	GUQ	SU
<i>Eriogonum lagopus</i>	Rabbit Buckwheat		Watch Species	G3	S3
<i>Eriogonum umbellatum</i> var <i>aureum</i>	A Wild-buckwheat		Watch Species	G5TU	SU
<i>Eriophorum scheuchzeri</i>	Scheuchzer Cotton-grass		Watch Species	G5	SU(MT);S1(WY)
<i>Eriophorum viridicarinatum</i>	Green-keeled Cottonsedge		Watch Species	G5	S3(MT);S1(WY)
<i>Euthamia graminifolia</i>			Watch Species	G5	SU
<i>Evax prolifera</i>	Big-head Evax		Watch Species	G5	SU
<i>Floerkea proserpinacoides</i>			Watch Species	G5	SU
<i>Galium cymosum</i>	Pacific Bedstraw		Watch Species	G?	SU
<i>Gentiana aquatica</i>	Wet Meadow Gentian		Watch Species	G4	S3
<i>Gentiana prostrata</i>	Pygmy Gentian		Watch Species	G5	SU
<i>Gentianella tenella</i>	Slender Gentian		Watch Species	G4G5	SU
<i>Geum canadense</i>	White Avens		Watch Species	G5	SU
<i>Geum rossii</i> var <i>rossii</i>	Ross Avens		Watch Species	G5T5	SU
<i>Gilia inconspicua</i>	Shy Gilia		Watch Species	G5	S3
<i>Gnaphalium purpureum</i> var <i>purpureum</i>	Purple Cudweed		Watch Species	G5TU	SA
<i>Grindelia nana</i> var <i>integrifolia</i>	Low Gumweed		Watch Species	G5T4	SU
<i>Halenia deflexa</i> ssp <i>deflexa</i>	Spurred Gentian		Watch Species	G5TU	S3
<i>Halimolobos virgata</i>	Twiggy Halimolobos		Watch Species	G4	S3

<i>Haplopappus multicaulis</i>	Many-stem Goldenweed		Watch Species	G4	S2S3
<i>Helenium hoopesii</i>	Orange Sneezeweed		Watch Species	G5	SU
<i>Heterotheca villosa</i> var <i>depressa</i>	Low Golden Aster		Watch Species	G5T3	SU
<i>Hierochloa alpina</i>	Alpine Sweet Grass		Watch Species	G5	SU
<i>Hierochloa odorata</i>			Watch Species	G5	S3
<i>Huperzia haleakalae</i>	Haleakalae Fir-clubmoss		Watch Species	G4?	SU
<i>Hymenopappus filifolius</i> var <i>idahoensis</i>	Idaho Hymenopappus		Watch Species	G5T4	SU
<i>Hymenopappus filifolius</i> var <i>luteus</i>	Yellowish Hymenopappus		Watch Species	G5T?	SU
<i>Impatiens aurella</i>			Watch Species	G4?	SU
<i>Impatiens ecalcarata</i>			Watch Species	G3G4	S3
<i>Ipomopsis congesta</i> ssp <i>pseudotypica</i>	Wyoming Ipomopsis		Watch Species	G5T?	S2S3
<i>Isoetes lacustris</i>	Western Quillwort		Watch Species	G5	SU
<i>Isoetes nuttallii</i>	Nuttall Quillwort		Watch Species	G4?	SU
<i>Juncus interior</i>	Inland Rush		Watch Species	G4G5	SU
<i>Juncus triglumis</i>	Three-flowered Rush		Watch Species	G5	SU
<i>Juncus tweedyi</i>	Tweedy's Rush		Watch Species	G3Q	SU
<i>Juncus vaseyi</i>			Watch Species	G5?	SU
<i>Lemna minuta</i>	Least Duckweed		Watch Species	G4	SU
<i>Lemna valdiviana</i>	Pale Duckweed		Watch Species	G5	SU
<i>Ligusticum porteri</i>	Porter's Lovage		Watch Species	G4G5	SU
<i>Ligusticum verticillatum</i>	Idaho Lovage		Watch Species	G4G5	S2S3
<i>Lilium columbianum</i>	Columbia Lily		Watch Species	G4G5	SU
<i>Lilium philadelphicum</i>			Watch Species	G5	S3
<i>Lobelia kalmii</i>			Watch Species	G5	SU
<i>Lomatium farinosum</i>	Coeur D'alene Desert-parsley		Watch Species	G4G5	SU
<i>Madia minima</i>	Small-headed Tarweed		Watch Species	G4	S3
<i>Mimulus suksdorfii</i>	Suksdorf Monkeyflower		Watch Species	G4	S3S4
<i>Mirabilis hirsuta</i>	Hairy Four-o'clock		Watch Species	G5	S3
<i>Muhlenbergia montana</i>	Mountain Muhly		Watch Species	G5	SU
<i>Myosotis verna</i>	Early Forget-me-not		Watch Species	G5	S3
<i>Navarretia divaricata</i>	Mountain Navarretia		Watch Species	G5	SU
<i>Oenothera elata</i> ssp <i>hirsutissima</i>	Hairy Primrose		Watch Species	G5T?	SU
<i>Oryzopsis contracta</i>	Contracted Indian Ricegrass		Watch Species	G3G4	S3
<i>Oxalis stricta</i>	Upright Yellow Wood-sorrel		Watch Species	G5	SA
<i>Oxytropis lagopus</i> var <i>conjugens</i>	Rabbit-foot Crazyweed		Watch Species	G4T3	S3
<i>Oxytropis nana</i> var <i>fallax</i>			Watch Species		SU
<i>Papaver pygmaeum</i>	Alpine Glacier Poppy		Watch Species	G3	S3
<i>Pedicularis contorta</i> var <i>rubicunda</i>	Coil-beaked Lousewort		Watch Species	G5T2	S3
<i>Pediocactus simpsonii</i>	Simpson's Hedgehog Cactus		Watch Species	G4	S3
<i>Penstemon caryi</i>	Cary's Beardtongue		Watch Species	G3G4	S3(MT);S1(WY)
<i>Penstemon flavescens</i>	Yellow Beardtongue		Watch Species	G3	S3
<i>Penstemon laricifolius</i>	Larch-leaf Beardtongue		Watch Species	G4	S3

<i>Penstemon montanus</i> var <i>idahoensis</i>	Idaho Mountain Beardtongue		Watch Species	G5T?	SU
<i>Physalis hederifolia</i> var <i>comata</i>	Prairie Ground Cherry		Watch Species	G5?T4?	SU
<i>Physalis pumila</i>	Dwarf Groundberry		Watch Species	G5	SU
<i>Physaria saximontana</i> var <i>dentata</i>	Rocky Mountain Twinpod		Watch Species	G3T3	S3
<i>Platyschukhria integrifolia</i> var <i>integrifolia</i>			Watch Species	G5T?	S4
<i>Poa macroclada</i>			Watch Species	G3?Q	SU
<i>Polygonum polygaloides</i>	White-margined Knotweed		Watch Species	G4G5	SU
<i>Potentilla concinna</i> var <i>macounii</i>	Macoun's Early Cinquefoil		Watch Species	G2?	SU
<i>Rubus arcticus</i>			Watch Species	G5	SU
<i>Salix petiolaris</i>			Watch Species	G5	SU
<i>Saxifraga subapetala</i>			Watch Species	G3G4Q	SU
<i>Scirpus pendulus</i>	Pendulous Bulrush		Watch Species	G5	SU
<i>Selaginella densa</i> var <i>standleyi</i>	Standley's Compact Selaginella		Watch Species	G5TU	SU
<i>Senecio congestus</i>	Marsh Flea-bane		Watch Species	G5	SU
<i>Senecio debilis</i>	Rocky Mountain Ragwort		Watch Species	G3G4	S3
<i>Senecio hyperborealis</i>	Boreal Groundsel		Watch Species	G5	SU
<i>Sparganium androcladum</i>	Branching Bur-reed		Watch Species	G4G5	SU
<i>Sphaeromeria capitata</i>	Rock-tansy		Watch Species	G3	S2S3
<i>Spiraea x pyramidata</i>	Pyramidal Spiraea		Watch Species	HYB	HYB
<i>Sporobolus vaginiflorus</i>	Sheathed Dropseed		Watch Species	G5	SU
<i>Stanleya tomentosa</i>	Hairy Prince-plume		Watch Species	G4T3	S3(MT);S2(WY)
<i>Stipa lemmonii</i> var <i>lemmonii</i>	Lemmon's Needlegrass		Watch Species	G5T?	SU
<i>Stipa thurberiana</i>	Thurber's Needlegrass		Watch Species	G5	SA
<i>Synthyris canbyi</i>	Mission Mountain Kittenails		Watch Species	G3	S3
<i>Synthyris missurica</i>	Western Mountain Synthyris		Watch Species	G4	S1
<i>Teucrium canadense</i>			Watch Species	G5	SU
<i>Thelesperma megapotamicum</i>			Watch Species	G5	SU
<i>Tillaea aquatica</i>	Water Pigmy-weed		Watch Species	G5	SU
<i>Townsendia leptotes</i>	Slender Townsendia		Watch Species	G4	SU(MT);S1(WY)
<i>Townsendia nuttallii</i>	Nuttall Townsend-daisy		Watch Species	G3	S3
<i>Townsendia spathulata</i>	Sword Townsendia		Watch Species	G3	S3
<i>Tradescantia bracteata</i>	Bracted Spiderwort		Watch Species	G5	SU
<i>Trisetum x orthochaetum</i>	Missoula County Oats		Watch Species	HYB	HYB
<i>Vaccinium ovalifolium</i>	Oval-leaf Huckleberry		Watch Species	G5	SU
<i>Verbena bipinnatifida</i>	Dakota Vervain		Watch Species	G5	SU
<i>Vernonia fasciculata</i> ssp <i>corymbosa</i>	Fascicled Ironweed		Watch Species	G5T?	SU
<i>Viburnum opulus</i>	Guelder-rose Viburnum		Watch Species	G5	SU
<i>Viola palustris</i>			Watch Species	G5	SU
<i>Viola pedatifida</i>	Prairie Violet		Watch Species	G5	SU
<i>Viola septentrionalis</i>	Northern Blue Violet		Watch Species	G5	SU
Non-Vascular Plants					

Amphidium mougeotii			Watch Species	G5	S?
Barbula convoluta			Watch Species	G5	S?
Barbula eustegia			Watch Species	G3?	S?
Blindia acuta			Watch Species	G5	S?
Brachythecium leibergii			Watch Species	G?	S?
Brachythecium nelsonii			Watch Species	G?	S?
Brachythecium oxycladon			Watch Species	G5	S?
Brachythecium populeum			Watch Species	G5	S?
Bryum alpinum			Watch Species	G4G5	S?
Bryum arcticum			Watch Species	G?	S2
Bryum bicolor			Watch Species	G?	S?
Bryum cyclophyllum			Watch Species	G4G5	S?
Campylium polygamum			Watch Species	G5	S?
Claopodium crispifolium			Watch Species	G4	S?
Desmatodon obtusifolius			Watch Species	G5	S?
Dicranella palustris			Watch Species	G?	S?
Dicranella schreberiana			Watch Species	G5	S?
Dicranella subulata			Watch Species	G?	S?
Dicranum angustum			Watch Species	G?	S?
Fontinalis antipyretica			Watch Species	G5	S?
Grimmia laevigata			Watch Species	G5	S?
Hygrohypnum duriusculum			Watch Species	G?	S?
Hygrohypnum smithii			Watch Species	G3G5	S?
Hypnum procerrimum			Watch Species	G3G4	S?
Hypnum recurvatum			Watch Species	G3G5	S?
Limprichtia revolvens			Watch Species	G4G5	S2
Platygyrium repens			Watch Species	G5	S?
Polytrichum sexangulare			Watch Species	G4	S?
Racomitrium fasciculare			Watch Species	G5	S?
Racomitrium heterostichum			Watch Species	G5	S?
Racomitrium occidentale			Watch Species	G?	S?
Racomitrium varium			Watch Species	G?	S?
Schistidium agassizii			Watch Species	G3G5	S?
Sphagnum angustifolium			Watch Species	G5	S2
Sphagnum fuscum			Watch Species	G5	S2
Splachnum sphaericum			Watch Species	G3G5	SU
Steerecleus serrulatus			Watch Species	G5	S?
Timmia norvegica			Watch Species	G3G4	S?
Tortella inclinata			Watch Species	G4G5	S?
Tortella tortuosa			Watch Species	G5	S?
Trichodon cylindricus			Watch Species	G4G5	S?
* If no state is listed, MT is implied.					