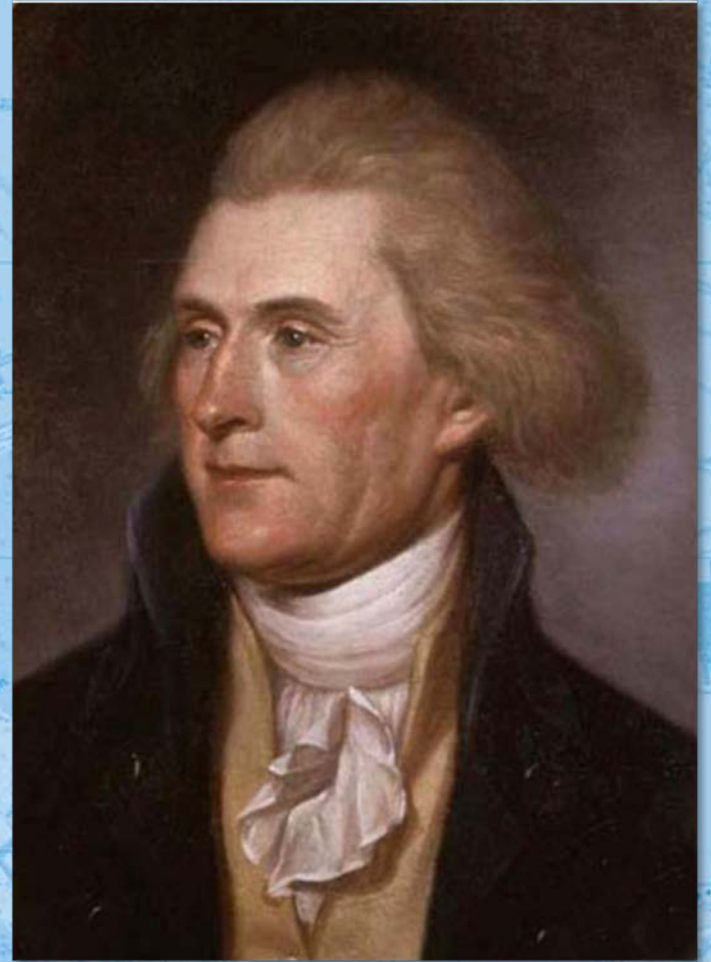


NOAA Charts Make History

*(A primer on the role of chart making in
America's history, 1807 - 1945)*

In 1807, Congress approved President Jefferson's plan for a survey of the coast.

“to cause a survey to be taken of coasts of the United States, in which shall be designated the islands and shoals and places of anchorage...”



ISLANDIA.

Septemtrio

Druides Ing. in Islandia
Christi anno 1141

BLOE.

Glama.

Getlands lokul.

Bald lokul.

Skialbred.

Khuka.

SUNNLEN
DINGAFJORDVING.

SKALHOTT

Hekla

Medalland.

AVSTLEN
DINGAFJORDVING.

Andali.

Heimdal.

Reykjavik.

Strogo.

Strogo.

Strogo.

Strogo.

Strogo.

Strogo.

Strogo.

Strogo.

Strogo.

Strogo.

Strogo.

Strogo.

Strogo.

Strogo.

Strogo.

Strogo.

Strogo.

Meridies.

ILLYSTRISS. AC POTENTISS.
REGI FREDERICO II DANIAE,
NORVEGIAE, SLAVORVM. GO
THORVMQVE REGI. ETC. PRIN
CIPi SVO CLEMENTISSIMO,
ANDREAS VELLEIVS
DESCRIBED. ET DEDICABAT.





Egyptian tomb painting from 35 centuries ago shows a sounding pole to test depths.



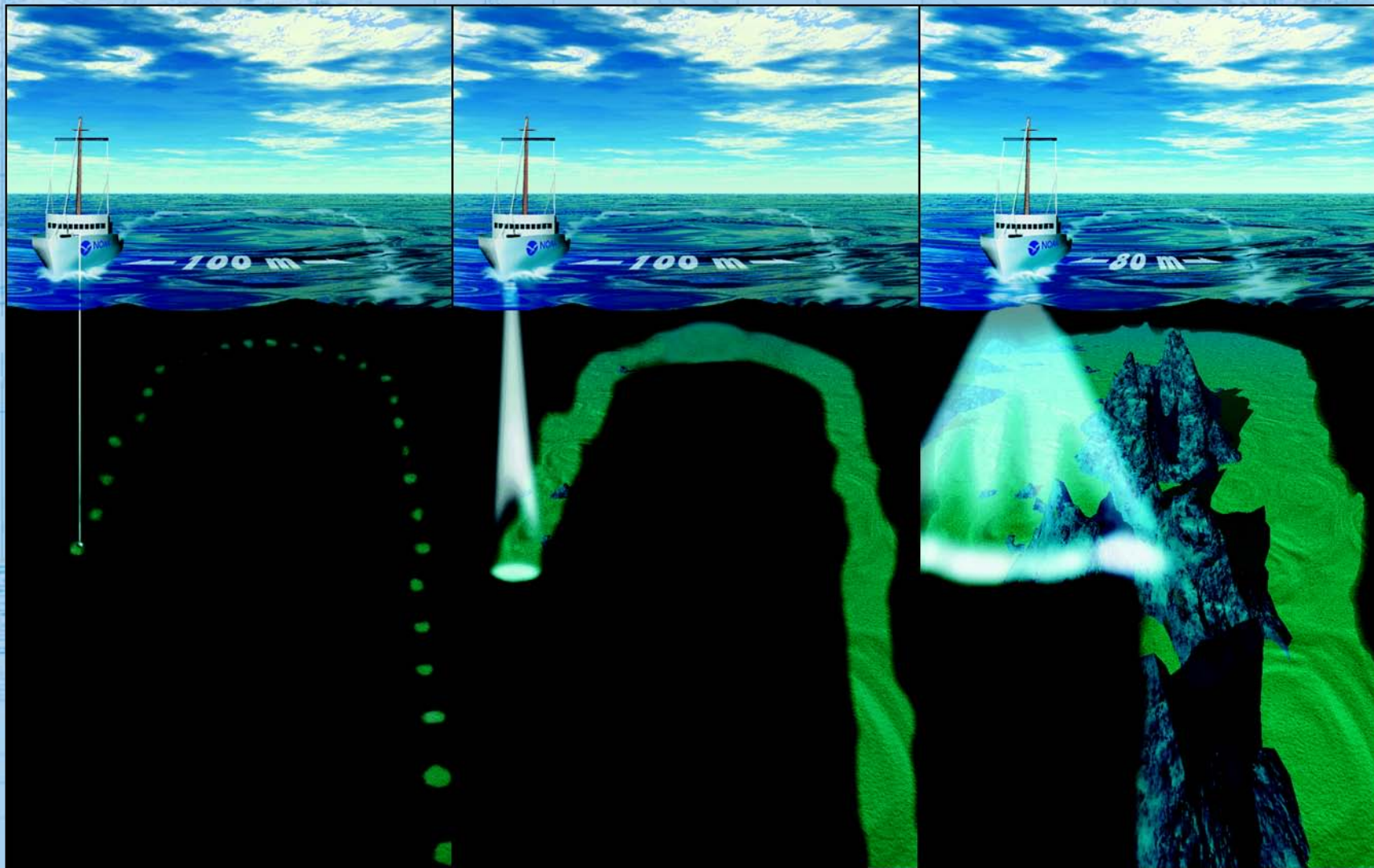
1450 BC

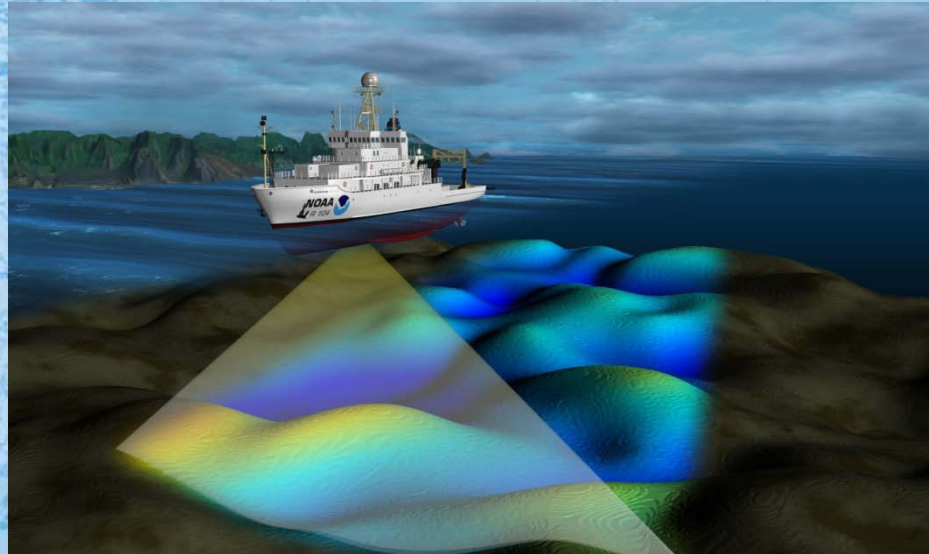


LEADLINE

SINGLE BEAM

MULTIBEAM





- NOAA mandate for surveys & charts covers all U.S. territorial waters and the U.S. Exclusive Economic Zone
 - a combined area of 3.4 million square nautical miles
 - extends 200 nautical miles offshore from the nation's coastline
- NOAA maintains a suite of approximately 1,000 nautical charts