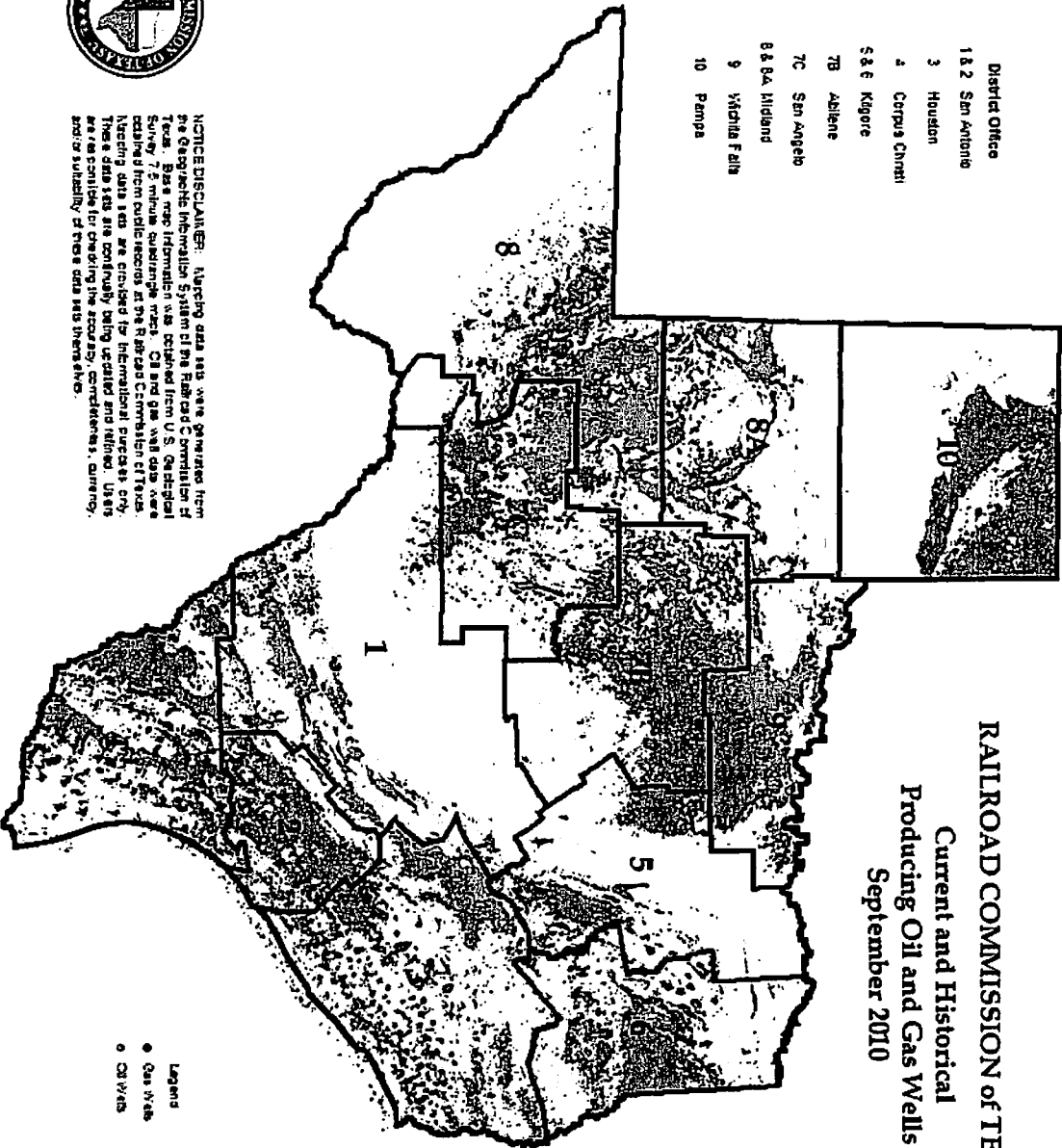




**NOTICE/DISCLAIMER:** Mapping data sets were generated from the Geographic Information System of the Railroad Commission of Texas. Base map information was obtained from U.S. Geological Survey 7.5 minute quadrangle maps. Oil and gas well data were obtained from public records at the Railroad Commission of Texas. Mapping data sets are provided for informational purposes only. These data sets are continually being updated and refined. Users are responsible for checking the accuracy, completeness, currency, and/or suitability of these data sets themselves.

**Legend**  
 ● Gas Wells  
 ○ Oil Wells



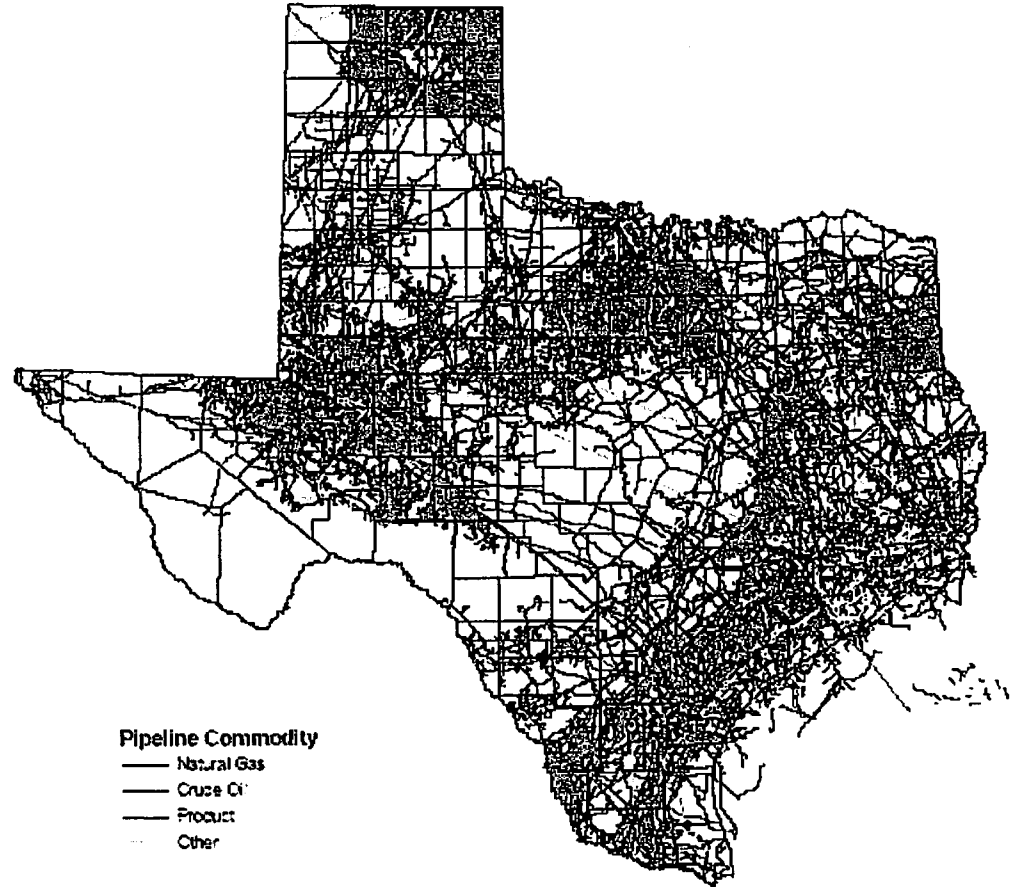
**RAILROAD COMMISSION of TEXAS**  
 Current and Historical  
 Producing Oil and Gas Wells  
 September 2010

- District Office**  
 1 & 2 San Antonio  
 3 Houston  
 4 Corpus Christi  
 5 & 6 Midland  
 7 San Angelo  
 8 & 9 Wichita Falls  
 10 Pampa

# ***Texas Pipelines***

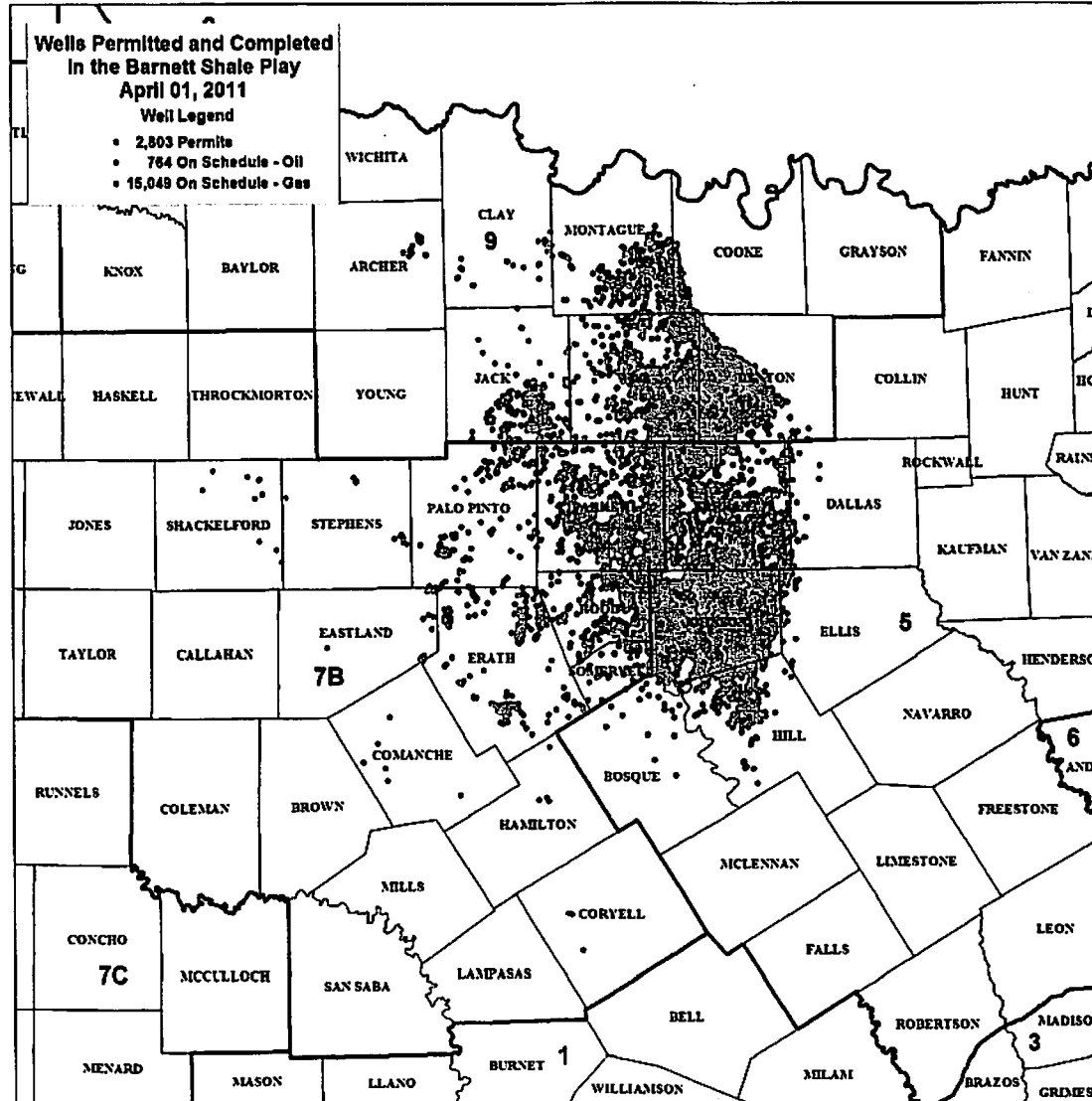
**Pipeline Operators: 1,238**

**Miles of Pipeline: 282,000**



***\*\*Miles do not include  
Distribution type pipe systems  
to homes or businesses in cities  
and towns***

# Wells Permitted and Completed in the Barnett Shale Play



# ***ECONOMIC BENEFIT***

## **BARNETT SHALE (2008)**

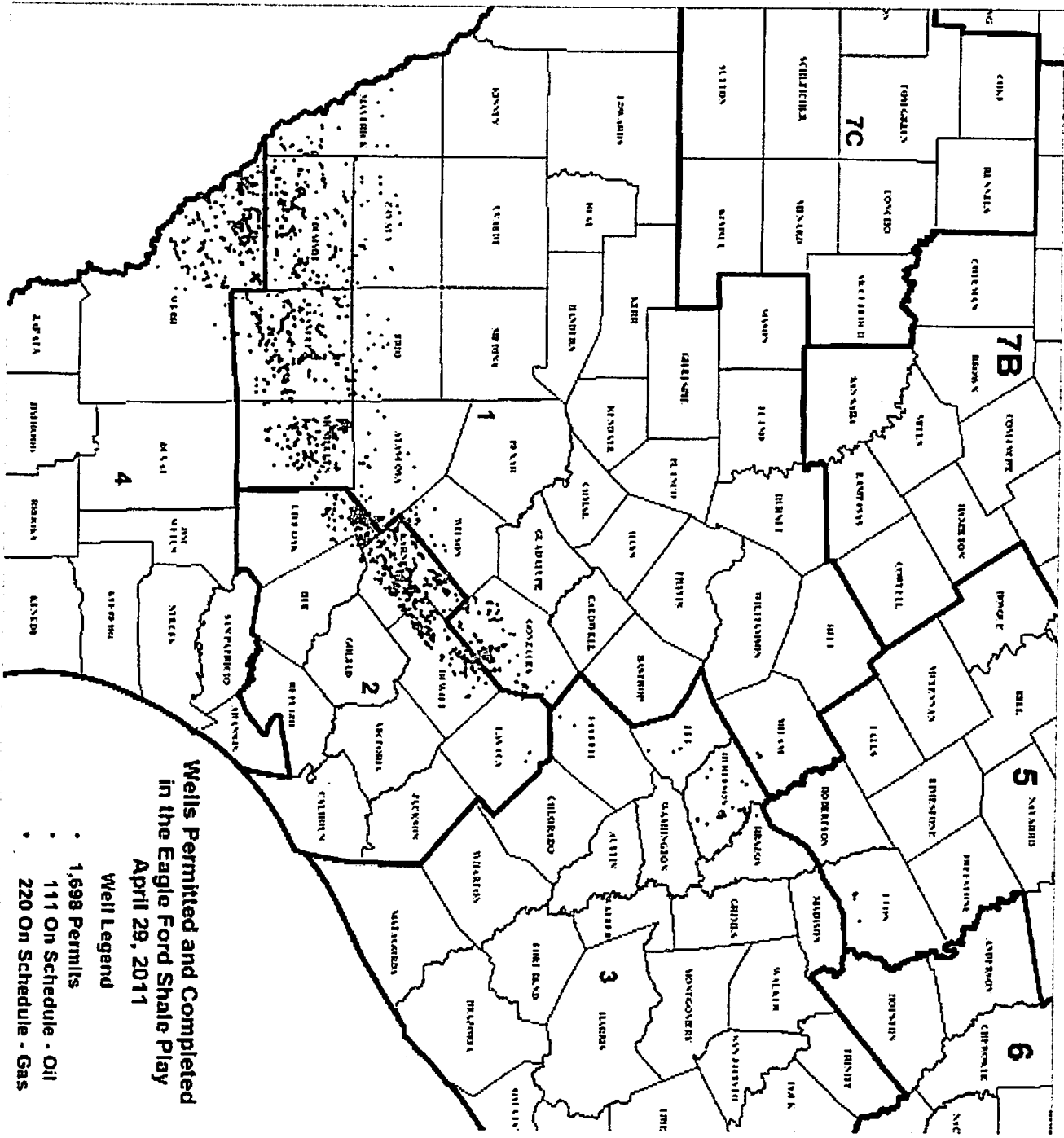
❖ \$13.7 billion annual output

❖ 132,497 jobs

❖ \$275 million in severance tax

❖ Total fiscal stimulus \$1 billion

"Drilling for Dollars: An Assessment of the Ongoing and Expanding Economic Impact of Activity in the Barnett Shale of Fort Worth and the Surrounding Area," Dr. Ray Perryman, March, 2008



**Wells Permitted and Completed  
in the Eagle Ford Shale Play  
April 29, 2011**

**Well Legend**

- 1,698 Permits
- 111 On Schedule - Oil
- 220 On Schedule - Gas

# **ECONOMIC BENEFIT**

## **EAGLE FORD SHALE (2009)**

\$2.9 billion in total economic output (or revenues) impact

- ❖ Supports 12,601 full-time jobs in the area
- ❖ \$511.8 million in salaries and benefits paid to workers
- ❖ \$1.3 billion of gross state product
- ❖ \$60.9 million in State revenue (\$36.3 million in severance taxes)
- ❖ \$47.6 million in local government revenues

Center for Community and Business Research, University of Texas at San Antonio,  
Economic Impact of the Eagle Ford Shale, February, 2011.