

**California Department of Transportation
Stormwater Management Program
District 1 Work Plan**

Fiscal Year

2017-2018

CTSW-RT-16-316.11.1



California Department of Transportation
Division of Environmental Analysis
Stormwater Management Program
1656 Union Street, Eureka, California 95501

<http://www.dot.ca.gov/hq/env/stormwater>

October 1, 2016



For individuals with sensory disabilities, this document is available in alternate formats upon request. Please call or write to the Stormwater Liaison, Caltrans Division of Environmental Analysis, MS-27, P.O. Box 942874, Sacramento, CA 94274-0001, (916) 653-8896 Voice, or dial 711 to use a relay service.

**California Department of Transportation
District 1 Certification
District Work Plan 2017-18**

I certify under penalty of law that this document and all attachments were prepared under my direction or supervision in accordance with a system designed to assure that qualified personnel properly gather and evaluate the information submitted. Based on my inquiry of the person or persons who manage the system, or those persons directly responsible for gathering the information, the information submitted is to the best of my knowledge and belief, true, accurate, and complete. I am aware that there are significant penalties for submitting false information, including the possibility of fine and imprisonment of knowing violations. [40 CFR 122.22(d)]



Charles C. Fielder

District 01

August 24, 2016

Date

This page was intentionally left blank.

Table of Contents

1	Introduction	1-1
2	District Personnel and Responsibilities	2-1
3	District Facilities and Water Bodies	3-1
4	Drinking Water Reservoirs and Recharge Facilities.....	4-1
5	Slopes Prone to Erosion	5-1
6	Implementation.....	6-1
7	Region-Specific Activities	7-1

Figures

Figure 2-1: District 1 Organizational Chart	2-5
Figure 5-1: District 1 2016 Areas Prone to Erosion.....	5-3

Tables

Table 2-1: District 1 Stormwater Personnel and Responsibilities	2-2
Table 2-2: District 1 Signatory Authority for Key Documents.....	2-4
Table 4-1: District 1 Drinking Water Reservoirs and Recharge Facilities	4-1
Table 5-1: District 1 Inventory of Road Segments Prone to Erosion.....	5-1
Table 6-1: District 1 Anticipated Project Development and Construction Schedule.....	6-3
Table 6-2: District 1 Anticipated Significant Road Maintenance Activities	6-10
Table 6-3: District 1 Monitoring Activities	6-11
Table 7-1: District 1 Maintenance Notifications to the North Coast Regional Water Quality Control Board	7-3

This page was intentionally left blank.

1 Introduction

General Information about the District Work Plan

The District Work Plans (DWP) describe the organization of each California Department of Transportation (Caltrans) District's stormwater program and outline the planned stormwater activities for the upcoming fiscal year. They are prepared and submitted on October 1 each year. Since the DWP is District-specific, each Regional Water Quality Control Board (RWQCB or Regional Board) is provided a copy of the DWPs relevant to their jurisdiction.

This DWP presents information about District 1's water bodies, Best Management Practices (BMPs), and monitoring programs. It describes how the District will specifically implement the requirements of the Statewide Stormwater Management Plan (SWMP) during fiscal year 2017-18. Implementation activities will be conducted in accordance with the procedures presented in the SWMP. In addition, this DWP fulfills Provision E.3.b of the National Pollutant Discharge Elimination System (NPDES) Statewide Storm Water Permit Waste Discharge Requirements (WDRs) for State of California Department of Transportation (Order Number 2012-0011-DWQ, NPDES Number CAS000003, Effective July 1, 2013) (NPDES Permit). The NPDES Permit was amended by Orders WQ 2014-0006-EXEC (January 17, 2014), WQ 2014-007-DWQ (May 20, 2014), and WQ 2015-0036-EXEC (April 7, 2015). A conformed NPDES Permit was issued on April 7, 2015 (Conformed NPDES Permit), available on the California State Water Resources Control Board's (SWRCB) website:

http://www.swrcb.ca.gov/board_decisions/adopted_orders/water_quality/2012/wq2012_0011_dwq_conformed_signed.pdf.

The DWP's seven sections describe how the District plans to implement the stormwater program during the upcoming fiscal year. Section 1 introduces the DWP, describes its organizational structure, and identifies the key goals and commitments made by the District for the upcoming fiscal year. Section 2 describes the personnel with stormwater operations responsibilities in the District. In Section 3, the District's facilities are listed and categorized by type and location. Section 4 describes and identifies the high-risk locations where spills from the District's owned rights-of-way, roadways or facilities can discharge directly to a drinking water reservoir or ground water recharge facility. In Section 5, the District's road segments that are prone to erosion are identified. Section 6 summarizes the District's implementation activities, including projects that will be in the design and construction phases during the fiscal year, maintenance projects, and planned stormwater monitoring activities. Section 7 identifies the planned region-specific activities (if applicable) to address the requirements listed in Attachment V of the Conformed NPDES Permit.

District Goals and Commitments

Caltrans developed new Mission, Vision, Goals and Values in 2014 in response to internal and external reviews. With a greater emphasis on sustainability, livability, reduced pollution in communities, valuing its people, resources and partners, while also making decisions that improve the environment, the storm water program will improve through the implementation of the new Mission, Vision, Goals and Values. The District is also committed to implementing the new Mission, Vision, Goals and Values.

- Mission: Provide a safe, sustainable, integrated and efficient transportation system to enhance California's economy and livability.
- Vision: A performance-driven transparent and accountable organization that values its people, resources and partners, and meets new challenges through leadership, innovation and teamwork.

- Goals:
 - **Safety and Health** – Provide a safe transportation system for workers and users, and promote health through active transportation and reduced pollution in communities.
 - **Stewardship and Efficiency** – Money Counts. Responsibly manage California’s transportation-related assets.
 - **Sustainability, Livability and Economy** – Make long-lasting, smart mobility decisions that improve the environment, support a vibrant economy, and build communities, not sprawl.
 - **System Performance** – Utilize leadership, collaboration and strategic partnerships to develop an integrated transportation system that provides reliable and accessible mobility for travelers.
 - **Organizational Excellence** – Be a national leader in delivering quality service through excellent employee performance, public communication and accountability.

There are many environmental challenges in the North Region however, here in District 1, we are committed to moving forward with the Departments goals in mind as we continue to protect and serve the great State of California.

2 District Personnel and Responsibilities

Section 2 of the DWP describes positions, addresses, and telephone numbers of personnel with responsibilities for stormwater operations within the District. This section also identifies positions having signatory authority for various notifications or documents required for submittal by a District (e.g., Project Registration Documents, including Notices of Intents or NOIs).

District NPDES Stormwater Coordinator

The District NPDES Stormwater Coordinators serve as liaisons with the Water Quality Program. Liaison activities include the following:

- Conducting meetings related to stormwater management issues with the coordinators from each functional unit and with other municipal separate storm sewer system (MS4) permittees to discuss problems and concerns.
- Regular communications with representatives of the RWQCB.

The functional unit coordinators will assist the District Divisions in implementing the Division's stormwater management activities. The District NPDES Stormwater Coordinators also provide coordination with Caltrans' Headquarters functional programs and the Districts.

In addition, the NPDES Stormwater Coordinators have the following responsibilities:

- Serving as the point of contact for regulatory inquiries regarding implementation of the Statewide SWMP.
- Receiving and responding to public inquiries made to the Districts regarding stormwater management issues.
- Coordinating, tracking, and reporting the District's response to illicit connections/illegal discharges (IC/IDs) and non-permitted non-stormwater discharges.
- Reporting instances of noncompliance to the RWQCBs unless otherwise indicated in the District Work Plan.

Maintenance Stormwater Coordinator

The District Maintenance Stormwater Coordinators serve as point of contact for all Maintenance Stormwater Program inquiries. The following generally describes their responsibilities:

- Reviewing long form Stormwater Data Reports (SWDRs) to ensure compliance with Maintenance requirements and maintainability of stormwater control measures following construction completion.
- Participating in construction contract acceptance review.
- Conducting Facility Pollution Prevention Plan (FPPP) inspections and prepare FPPPs.
- Attending Maintenance Stormwater Advisory Team (MSWAT) meetings.
- Manages the SHOPP 335 project coordination and funding activities.

The Maintenance Stormwater Coordinator coordinates with the NPDES Coordinator and reports instances of stormwater discharges from highway facilities to the Regional Board.

Construction Stormwater Coordinator

The District Construction Stormwater Coordinator serves as point of contact for all Construction Stormwater Program inquiries. The Construction Stormwater Coordinator coordinates with the NPDES Coordinator and reports instances of stormwater discharges from highway facilities to the Regional Board. The Construction Stormwater Coordinator is responsible for conducting inspections to assist the Registered Engineer (RE) in ensuring that stormwater controls are implemented on construction sites and to assist the REs in reviewing SWPPPs/WPCPs for adequacy.

Engineering Services (Hydraulics) Representative

The Hydraulics Representative provides assistance with treatment design.

Public Information Coordinator

The Public Information Officer is the lead for Public Outreach activities within the District.

Encroachment Permits Stormwater Coordinator

The District Encroachment Permits Stormwater Coordinator serves as a point of contact for all Encroachment Permits Stormwater Program inquiries. In coordination with the NPDES Coordinator, the Encroachment Permits Stormwater Coordinator reports instances of stormwater discharges from highway facilities to the Regional Board.

Landscape Architecture (Design) Representative

The Landscape Architecture Representative prepares temporary and permanent vegetation erosion control plans and specifications for capital projects.

Table 2-1 lists staff members responsible for implementing the Stormwater Program.

Table 2-1: District 1 Stormwater Personnel and Responsibilities

Staff Name	Title	Phone No.	E-mail	Responsibility
Carlos Portillo (Acting)	Deputy District Director North Region Environmental Planning	(530) 741-5461	carlos.portillo@dot.ca.gov	Oversees all North Region Environmental employees
Sandra Rosas	Chief, North Region Office of Environmental Services – North	(707) 441-5730	sandra.rosas@dot.ca.gov	Oversees all North Region – North Environmental employees
David Melendrez	Chief, North Region Office of Environmental Engineering – North	(707) 445-5201	david.melendrez@dot.ca.gov	Oversees all Office of Environmental Engineering - North employees within District 1
Alex Arévalo	North Region District 1 NPDES Coordinator	(707) 441-4674	alex.arevalo@dot.ca.gov	All District 1 NPDES stormwater issues
Samantha Hadden	North Region District 1 NPDES Coordinator	(707) 441-5629	samantha.hadden@dot.ca.gov	All District 1 NPDES stormwater issues

Table 2-1: District 1 Stormwater Personnel and Responsibilities

Staff Name	Title	Phone No.	E-mail	Responsibility
Wes Faubel	North Region Design Stormwater Coordinator	(530) 225-3412	wesley.faubel@dot.ca.gov	Assists Design, provides guidance on BMP selection and implementation during design, monitors for compliance with SWMP
Sheila Sadkowski	North Region Assistant Design Stormwater Coordinator	(707) 445-5277	sheila.sadkowski@dot.ca.gov	Assists Design, provides guidance on BMP selection and implementation during design, monitors for compliance with SWMP
Walt Dragaloski	North Region Construction Stormwater Coordinator – West Area	(707) 445-6697	walt.dragaloski@dot.ca.gov	Assists RE, inspects stormwater controls on construction sites, reviews SWPPPs/ WPCPs
Brett Johnson	District 1 Maintenance Stormwater Coordinator - Roadside/Facilities	(707) 441-2014	brett.l.johnson@dot.ca.gov	Provides guidance on Maintenance BMP selection and implementation, monitors for compliance with SWMP
Phlora Barbash	NR Landscape Architecture Associate	(707) 441-3974	phlora.barbasm@dot.ca.gov	Provides erosion control designs and specifications for capital projects
Laura Lazzarotto	NR Landscape Architecture Coordinator	(707) 445-7878	laura.lazzarotto@dot.ca.gov	Provides erosion control designs and specifications for capital projects
Kristine Pepper	NR Hydraulics Representative	(707) 441-5820	Kristine.pepper@dot.ca.gov	Provides assistance with treatment BMP and fish passage design
Betsy Totten	District 1 Public Information Officer	(707) 445-6444	betsy.totten@dot.ca.gov	Coordinates public outreach education activities
James Van Bonn	District 1 Encroachment Permits Engineer	(707) 445-6358	james.von.bonn@dot.ca.gov	Provides guidance to District 1 Encroachment Permits staff and permittees on stormwater issues
Chris Clifford	District 1 Encroachment Permits Stormwater Coordinator	(707) 441-5741	chris.clifford@dot.ca.gov	Provides guidance to District 1 Encroachment Permits staff and permittees on stormwater issues

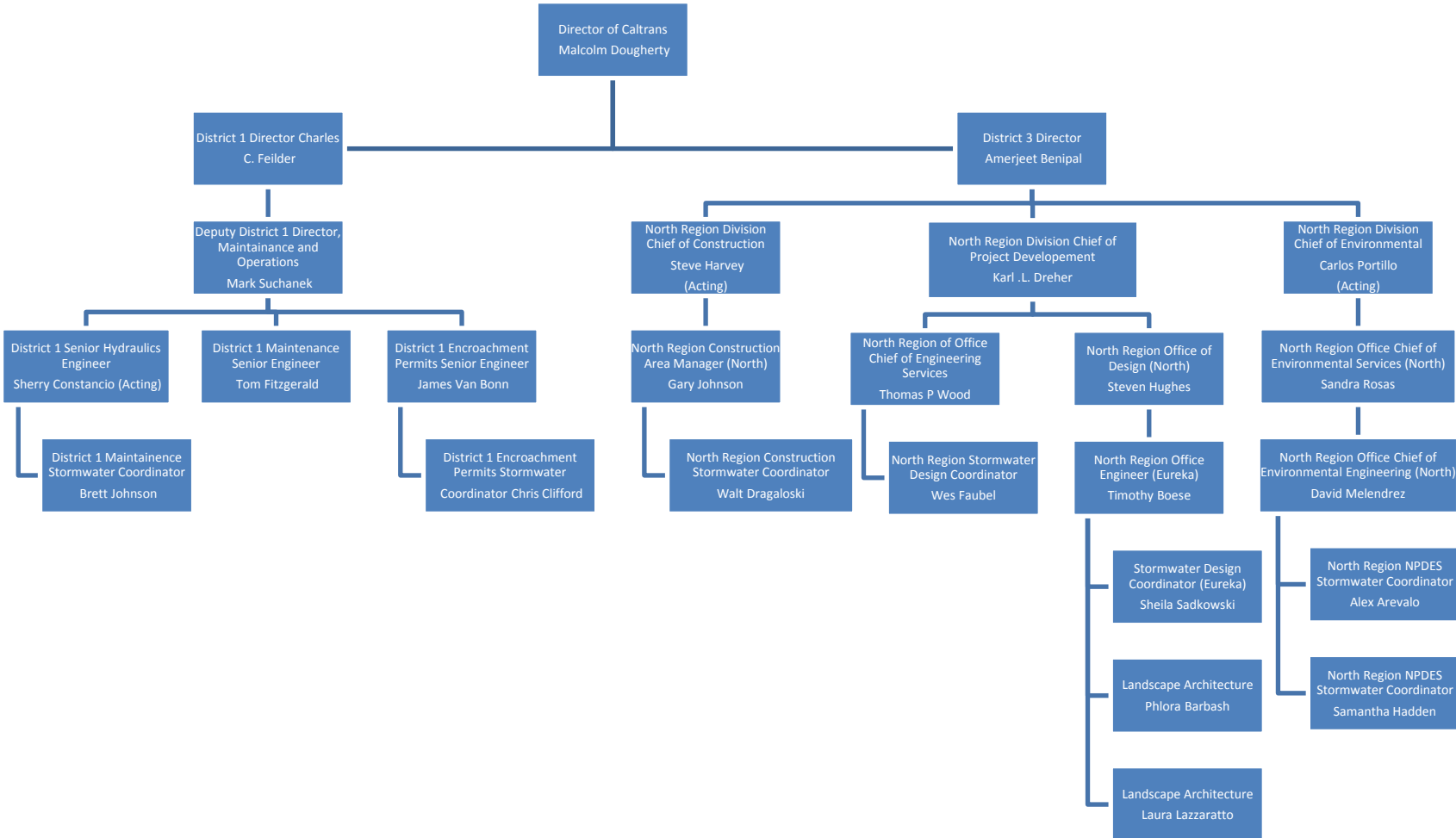
Table 2-2 lists individuals authorized to sign the documents, reports, and other information submitted by the District to either the SWRCB or the RWQCB(s). These individuals/positions may delegate authorization to their staff to sign various documents and reports required for implementation of the Stormwater Program. It also includes delegation of signatory authority for key Conformed NPDES Permit and SWMP required documents.

Table 2-2: District 1 Signatory Authority for Key Documents

Position or Individual	Phone No.	E-mail	Documents Authorized for Signatures
Charles C Fielder, District Director	(707) 445-6445	charlie.fielder@dot.ca.gov	All District Documents
Gary Johnson, NR Construction Manager, West	(707) 825-4897	gary.d.johnson@dot.ca.gov	All District Documents
David Melendrez, Chief, North Region Office of Environmental Engineering	(707) 445-5201	david.melendrez@dot.ca.gov	All District Documents except District Work Plan
Alex Arévalo, North Region NPDES Coordinator	(707) 441-4674	alex.arevalo@dot.ca.gov	All District Documents except District Work Plan
Samantha Hadden, North Region NPDES Coordinator	(707) 441-5629	samantha.hadden@dot.ca.gov	All District Documents except District Work Plan

Figure 2-1 shows an organizational chart describing key persons with responsibilities for stormwater operations within the District.

Figure 2-1: District 1 Organizational Chart



This page was intentionally left blank.

3 District Facilities and Water Bodies

Section 3 of the DWP identifies maintenance stations (including crew functions and street addresses), vista points, commercial vehicle enforcement areas, roadside rest areas, park and ride facilities, toll road and bridge plazas, equipment shops, and other Caltrans facilities. Facility Pollution Prevention Plans (FPPPs) are prepared and implemented at Maintenance facilities within the District's boundaries, such as maintenance stations, material storage facilities, and equipment shops. To comply with Department of Homeland Security policy, the table and map identifying these facilities is not available to the public. For more information, contact Caltrans' Office of Emergency Management or Division of Environmental Analysis.

This page was intentionally left blank.

4 Drinking Water Reservoirs and Recharge Facilities

Section 4 of the DWP describes and identifies the high-risk areas, which are locations where spills or other releases from District-owned rights-of-way, roadways, or facilities may discharge directly to municipal or domestic water supply reservoirs or ground water percolation facilities. Projects that potentially drain to these high-risk areas consider project features that enhance spill response.

Drinking water reservoirs and recharge facilities are areas such as locations where spills from District-owned ROWs or facilities can discharge directly to municipal or domestic water supply reservoirs or ground water percolation facilities. To generate the list of municipal, domestic water supply reservoirs, and ground water percolation facilities, the District first contacted known public and private water supply providers. From the information received, the District determined which facilities were susceptible to a direct spill from a District activity or facility. This determination was based on proximity between the water body and the District's facility, use characteristics of the facility, and the probable spill response time.

When planning projects within these defined areas, District 1 considers project design features for aiding in the prevention of accidental spills that could impact the area; these features are typically commensurate with safety improvements for reducing vehicle accidents. Examples of these features may include, but are not limited to, median barrier, guardrail, signalization, and vehicle restrictions. Features considered for improving spill response time typically include elongated drainage paths, call boxes, signage, or video surveillance.

A list of drinking water reservoirs and recharge facilities within District is presented in Table 4-1.

Table 4-1: District 1 Drinking Water Reservoirs and Recharge Facilities

Road Segment/ Facility	County	Regional Board	Drinking Water Reservoir or Recharge Facility Area	Description	Comments
96/0.24	HUM	1	Willow Creek	Water intake for Willow Creek Community Services District	Intake less than 0.1 miles downstream of Bridge No. 04-0135
101/103.66	HUM	1	Savage Creek	Water intake for Seawood Estates and Trinidad Safety Roadside Rest Area	Roadway drains to facility
1/33.6	MEN	1	Greenwood Creek	Water intake for Town of Elk	Intake below Bridge No. 10-0123
101/42.9	MEN	1	Chinquapin Lake Intake	Water for Pine Mountain Mutual Water Company	2 miles to facility
101/42.8	MEN	1	Morris Reservoir	Water for City of Willits	0.8 miles to facility

This page was intentionally left blank.

5 Slopes Prone to Erosion

Section 5 of the DWP identifies the road segments within District 1 that have slopes which are prone to erosion and sediment discharge. The road segments that are located in sensitive watersheds, or where there is an existing or potential threat to water quality, will be prioritized for implementing appropriate controls to the maximum extent practicable. In each Annual Report, the status of stabilization activities where applicable will be reported. Table 5-1 is District 1’s inventory of vulnerable road segments where erosion occurs and stabilization may be required, or where rock cut slopes are located and rock falls have occurred.

Table 5-1: District 1 Inventory of Road Segments Prone to Erosion

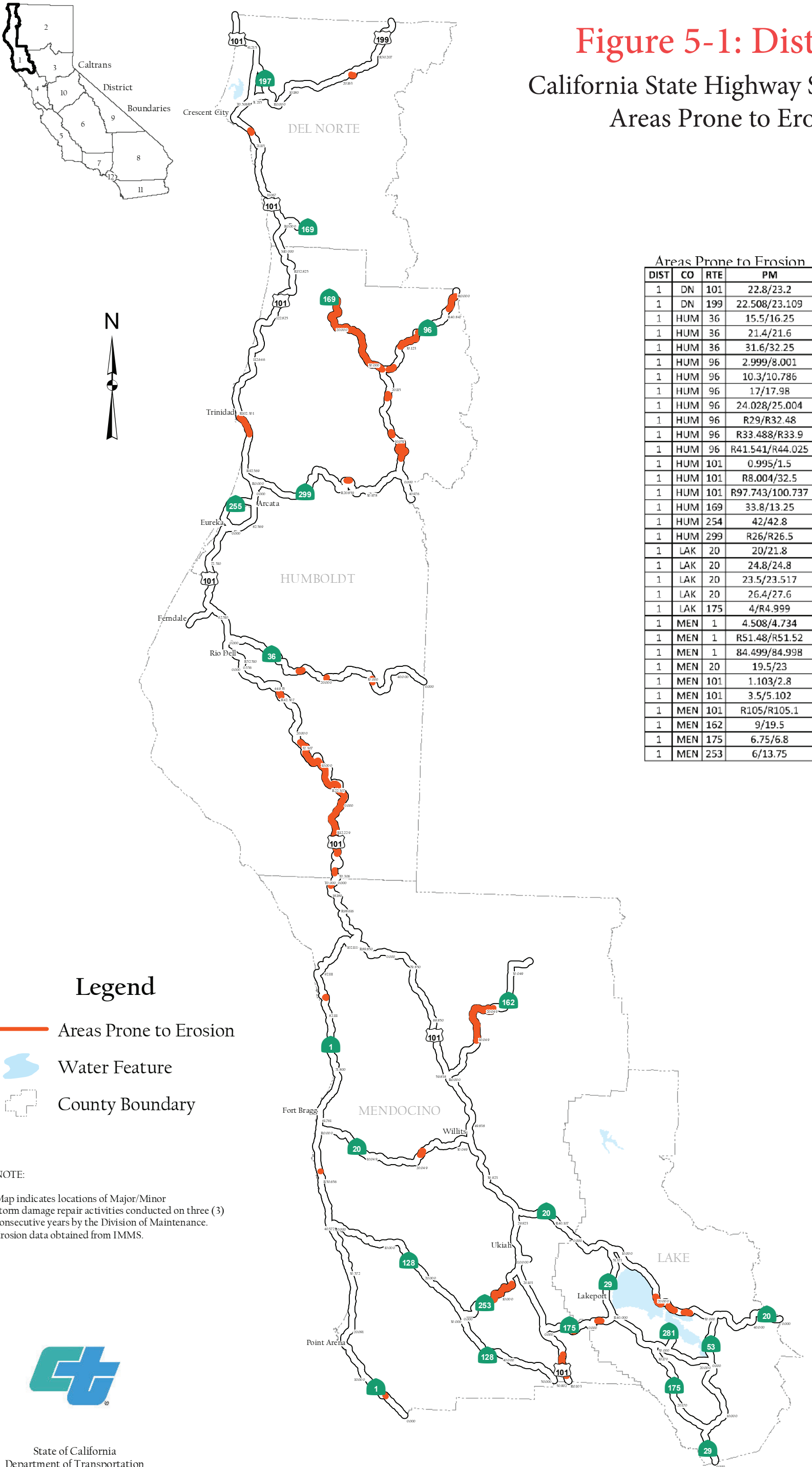
Road Segment	County	Regional Board	Watershed	Scheduled Stabilization Date
Route 101 PM 21.80 – 21.90	Del Norte	1	Mill Creek	11/01/2017
Route 199 PM 22.51 – 23.81	Del Norte	1	Smith River	10/01/2017
Route 36 PM 15.53 – 16.28	Humboldt	1	Van Duzen River	TBD
Route 36 PM 21.4 – 21.6	Humboldt	1	Van Duzen River	07/01/2023
Route 36 PM 31.75 – 31.95	Humboldt	1	Van Duzen River	01/01/2019
Route 36 PM 39.39 – 39.50	Humboldt	1	Van Duzen River	01/01/2019
Route 96 PM 3.50 – 17.45	Humboldt	1	Trinity River	TBD
Route 96 PM 29.00 – 29.77	Humboldt	1	Klamath River	TBD
Route 96 PM 41.54 – 44.03	Humboldt	1	Klamath River	TBD
Route 101 PM 1.05 – 1.11	Humboldt	1	South Fork Eel River	TBD
Route 101 PM 13.24 – 30.68	Humboldt	1	South Fork Eel River	TBD
Route 101 PM 97.74 – 98.44	Humboldt	1	Trinidad Hydrologic Unit	TBD
Route 169 PM 17.03 – 20.64	Humboldt	1	Klamath River	TBD
Route 20 PM 24.40 – 24.80	Lake	5	Clear Lake	TBD
Route 1 PM 4.44 – 4.79	Mendocino	1	Mendocino Coast	TBD
Route 1 PM 37.92 – 38.00	Mendocino	1	Navarro River	TBD
Route 1 PM 49.94 – 84.81	Mendocino	1	Mendocino Coast	TBD
Route 101 PM 2.01 – 3.89	Mendocino	1	Russian River	12/01/2019
Route 162 PM 9.00 – 11.40	Mendocino	1	Eel River	TBD
Route 162 PM 13.90 – 19.50	Mendocino	1	Eel River	TBD
Route 175 PM 6.75 – 6.80	Mendocino	1	Russian River	TBD
Route 253 PM 6.00 – 13.75	Mendocino	1	Navarro River – Russian River	TBD

Figure 5-1 is a map showing California State Highway System areas that required maintenance within District 1 in 2016, including rock cut slopes, landslides, and moderate soil erosion.

This page was intentionally left blank.

Figure 5-1: District 1




California State Highway System 2016 Areas Prone to Erosion



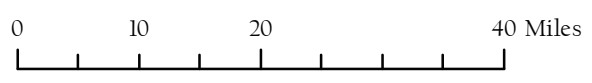
Areas Prone to Erosion

DIST	CO	RTE	PM
1	DN	101	22.8/23.2
1	DN	199	22.508/23.109
1	HUM	36	15.5/16.25
1	HUM	36	21.4/21.6
1	HUM	36	31.6/32.25
1	HUM	96	2.999/8.001
1	HUM	96	10.3/10.786
1	HUM	96	17/17.98
1	HUM	96	24.028/25.004
1	HUM	96	R29/R32.48
1	HUM	96	R33.488/R33.9
1	HUM	96	R41.541/R44.025
1	HUM	101	0.995/1.5
1	HUM	101	R8.004/32.5
1	HUM	101	R97.743/100.737
1	HUM	169	33.8/13.25
1	HUM	254	42/42.8
1	HUM	299	R26/R26.5
1	LAK	20	20/21.8
1	LAK	20	24.8/24.8
1	LAK	20	23.5/23.517
1	LAK	20	26.4/27.6
1	LAK	175	4/R4.999
1	MEN	1	4.508/4.734
1	MEN	1	R51.48/R51.52
1	MEN	1	84.499/84.998
1	MEN	20	19.5/23
1	MEN	101	1.103/2.8
1	MEN	101	3.5/5.102
1	MEN	101	R105/R105.1
1	MEN	162	9/19.5
1	MEN	175	6.75/6.8
1	MEN	253	6/13.75

Legend

-  Areas Prone to Erosion
-  Water Feature
-  County Boundary

NOTE:
Map indicates locations of Major/Minor storm damage repair activities conducted on three (3) consecutive years by the Division of Maintenance. Erosion data obtained from IMMS.



This page was intentionally left blank.

6 Implementation

Section 6 of the DWP identifies the specific projects in which work is planned during the fiscal year within the Project Approval/Environmental Document (PA/ED), Plans, Specifications, and Estimates (PS&E), and Construction development phases. The anticipated schedule of construction and maintenance projects is subject to change. These projects are limited to those meeting any of the following criteria:

1. All projects that require soil disturbing activities
2. Adjacent to a Drinking Water or Ground Water Recharge Facility, as described in Section 4 of the DWP
3. A supplemental environmental project
4. Additional projects per agreement between the District and local RWQCB

Projects listed in Table 6-1 include (where applicable):

1. Location (county, route and post mile limits)
2. Project number (expense authorization)
3. Basic Project Description
4. Disturbed soil area
5. Presence of receiving waters within or adjacent to project limits, with special designation for 303(d) listed water bodies (adopted)
6. Drinking Water Reservoir or Ground Water Recharge Facility within or adjacent to project (as identified in Section 4 of the DWP)
7. Projected milestone dates of PA/ED, PS&E, begin Construction, and end Construction
8. Description of Construction Controls
9. Post-Construction Treatment Controls (types and quantities)
10. Dredge and fill (CWA-401) activities within the project
11. Other Regional Water Control Board Permits Required
12. Potential and Actual Impacts of Project's Discharge
13. Area of New Impervious Surface
14. Percentage of New Impervious Surface to Existing Impervious Surface

The updated lists of projects meeting these criteria will also be provided to the RWQCB annually on October 1st. Furthermore, this section identifies planned maintenance projects with soil disturbance. Information associated with the project includes location, affected water body, and area of disturbance. In addition, this section also describes the planned stormwater monitoring activities within the District; however, these activities may be conducted jointly with other Districts and HQ. Consequently, the information contained in a DWP may be repeated in another DWP.

This page was intentionally left blank.

Table 6-1: District 1 Anticipated Project Development and Construction Schedule

No.	EA	Project Location					Project Description ^{2,3}	Water Bodies Within or Adjacent to Project Limits ⁴	Dredge and Fill Activities (Y/N/NA) ⁵	Other Regional Water Board Permits Required ⁶	Potential and Actual Impacts of Project's Discharge ⁷	Disturbed Soil Area (acres)	Area of New Impervious Surface (acres)	Percentage of New Impervious Surface to Existing Impervious Surface	Description of Construction Controls (SWPPP/WPCP/TBD) ⁸	Post-Construction Treatment Control Type, Quantity ⁹	Anticipated Project Delivery Schedule		Construction Period	
		Co.	Route	Begin PM	End PM	RB ¹											PA&ED Date	PS&E Date	Start Date	End Date
1	010E850	Various	Various	Various	Various	1	Guardrail Upgrade	TBD	-	-	-	-	-	WPCP	E	09/01/2017	10/01/2018	08/01/20019	10/01/2020	
2	010C590	Various	101	3.68	39.8	1	MBGR End Treatment Upgrades	(Klamath River)	-	-	-	-	-	TBD	E	1/26/2016	10/1/2016	6/1/2017	12/1/2018	
3	010E710	Del Norte	101	2.2	2.2	1	Emergency Storm Damage Waukell Creek	(Klamath River), Waukell Creek	Y	-	-	<1	0	0	C	NA	NA	NA	3/31/2017	
4	010B090	Del Norte	101	8.2	8.7	1	Hunter/Panther Creek Bridge Replacement	Hunter Creek, Panther Creek, (Klamath River)	Y	Tribal EPA	-	4.5	1.78	14	BS	7/1/2017	11/1/2017	4/1/2019	12/1/2022	
5	0149350	Del Norte	101	12.94	21.23	1	DN 101 Reconstruct Drainage	TBD	Y	-	-	-	-	TBD	E	3/1/2016	5/1/2017	1/1/2018	1/1/2019	
6	010B27U	Del Norte	101	14.9	15.3	1	Repair Storm Damage	Wilson Creek	N	-	-	0	0	0	E	8/25/2014	11/30/2015	5/23/2016	10/1/2018	
7	010C241	Del Norte	101	15	15	1	South Last Chance Wall	Wilson Creek, Frontal Pacific Ocean	N	-	-	0.45	0	-	C	8/25/2014	11/30/2015	5/23/2016	10/1/2018	
8	010B270	Del Norte	101	15.1	15.3	1	Last Chance Slips	Wilson Creek	N	-	-	0.25	0	0	E	6/2/2014	11/30/2015	5/9/2016	10/1/2018	
9	010B280	Del Norte	101	17.5	17.5	1	Log Crossing Repair Reconstruct Roadway	Wilson Creek	N	-	-	0.4	0	0	E	12/30/2014	12/23/2015	4/11/2016	12/1/2017	
10	010B290	Del Norte	101	21.7	22.9	1	Hamilton 2 Retaining Wall	Smith River Plain	N	-	-	0.29	0	0	E	12/30/2014	1/22/2016	6/20/2016	11/1/2017	
11	010B300	Del Norte	101	22	22	1	South Hamilton Slipout	Smith River Plain	N	-	-	0.25	0	0	E	6/30/2014	4/3/2015	10/2/2015	10/1/2017	
12	010C660	Del Norte	101	25.8	27.3	1	Crescent City Gateway	Lower Smith River	N	-	-	TBD	-	-	E	11/1/2017	12/1/2018	9/1/2019	12/1/2021	
13	010A100	Del Norte	101	35.77	35.77	1	DN Seismic Retrofit	Smith River	N	ROWD	-	< 1	0	-	E	2/25/2015	7/24/2015	5/10/2016	12/1/2017	
14	0143640	Del Norte	101	35.8	36.5	1	Dr Fine Bridge Replacement	Smith River	Y	-	-	7.4	1.2	-	BS	1/1/2018	12/1/2018	9/1/2019	12/1/2023	
15	0145490	Del Norte	197	3.2	4	1	Ruby 2 Widening	Smith River	Y	-	-	2	0.14	-	C	4/11/2013	9/1/2017	5/1/2018	2/1/2019	
16	0148110	Del Norte	197	4.5	4.5	1	Ruby 1 Widening	Smith River	N	-	-	0.3	0.07	-	E	4/11/2013	2/14/2014	1/2/2016	8/1/2017	
17	0148800	Del Norte	199	1	37	1	Del Norte County Culvert Rehab	Smith River	Y	-	-	-	-	-	E	1/1/2019	12/1/2019	8/1/2020	12/1/2022	
18	010B260	Del Norte	199	8	8.25	1	Smith River Curve Improvement	Smith River	Y	-	-	0.75	0.01	-	E	5/20/2015	3/7/2016	8/8/2017	12/1/2019	
19	010B310	Del Norte	199	8.7	8.7	1	Patrick Creek Slipout	Smith River	Y	-	-	0.23	0	0	E	11/19/2014	6/25/2015	1/26/2016	12/1/2017	
20	0147940	Del Norte	199	20.5	25.7	1	Patrick Creek Narrows Bridge Replacement and Widening	Middle Fork Smith River	Y	-	-	2.8	0.4	-	C	7/15/2016	9/1/2017	6/1/2018	12/1/2020	
21	014500U	Del Norte	199	22.7	26.5	1	Washington Narrows STAA Widening	Smith River	Y	-	-	2.74	0.29	17.90%	C	5/1/2015	9/1/2016	4/1/2017	12/31/2018	
22	010B320	Del Norte	199	24.7	24.7	1	Middle Fork Wall	Smith River	Y	-	-	0.2	0	0	E	11/19/2014	6/22/2015	3/29/2016	12/1/2017	
23	010E140	Del Norte	199	33.1	36.2	1	Restore Collier Tunnel Communication	Smith River	N	-	-	< 1	0	-	E	9/1/2018	3/1/2020	10/1/2020	11/1/2022	

¹ Regional Board

² Supplemental Environmental Projects designated as "SEP."

³ Projects adjacent to Drinking Water Reservoirs or Ground Water Recharge Facilities are noted (DW) and (GW), respectively.

⁴ Water bodies with designation for 303(d) designation are noted in parentheses.

⁵ If yes, a 401 permit will be required for this project. NA = Not Available at this time.

⁶ Regional Water Board Permits required other than Construction General Permit and Clean Water Act Section 401 water quality certification, such as Waiver of Discharge Requirements, Dewatering Permits, Bridge Painting WDRs, etc.

⁷ This information may come from the Water Quality Assessment Report prepared for each project, a Water Quality Technical Memorandum, or other document that evaluates the water quality impacts of a project.

⁸ A description of the Construction Controls is available in the project's Storm Water Pollution Prevention Plan (SWPPP), Water Pollution Control Plan (WPCP), or is To Be Determined (TBD) if the Disturbed Soil Area is unavailable.

⁹ Treatment Control Status identified by: device type/number of devices, exempt ("E"), or under consideration ("C"). See Treatment Control Status Legend below for device type abbreviations.

Table 6-1: District 1 Anticipated Project Development and Construction Schedule

No.	EA	Project Location					Project Description ^{2,3}	Water Bodies Within or Adjacent to Project Limits ⁴	Dredge and Fill Activities (Y/N/NA) ⁵	Other Regional Water Board Permits Required ⁶	Potential and Actual Impacts of Project's Discharge ⁷	Disturbed Soil Area (acres)	Area of New Impervious Surface (acres)	Percentage of New Impervious Surface to Existing Impervious Surface	Description of Construction Controls (SWPPP/WPCP/TBD) ⁸	Post-Construction Treatment Control Type, Quantity ⁹	Anticipated Project Delivery Schedule		Construction Period	
		Co.	Route	Begin PM	End PM	RB ¹											PA&ED Date	PS&E Date	Start Date	End Date
24	010C470	Del Norte	199	33.41	33.41	1	Collier Rest Area Rehab	Smith River	Y	-	-	-	-	TBD	E	10/1/2017	1/1/2018	9/1/2018	12/1/2020	
24	010E010	Humboldt	36	0.1	1.6	1	Alton 015 Shoulder Widening	(Eel River)	Y	-	-	7	2.5	TBD	C	6/1/2018	5/1/2019	12/1/2021	12/1/2021	
26	010C500	Humboldt	36	11.4	34.5	1	Bridge Rail Replacement - 3 bridges	(Van Duzen River)	Y	-	-	-	-	TBD	C	2/1/2018	12/1/2018	9/1/2019	12/1/2022	
27	010C150	Humboldt	36	21.5	21.5	1	Stormwater 335 Project	Van Duzen River	Y	-	-	3.2	0.1	0	SWPPP	BS	9/1/2020	6/1/2021	4/1/2022	7/1/2023
28	010B340	Humboldt	36	22.8	27.7	1	Larabee 3 Slip Repair	(Van Duzen River)	Y	-	-	0.79	0	-	WPCP	E	6/26/2014	3/20/2015	8/31/2015	12/1/2017
29	0143730	Humboldt	36	36.1	40.5	1	Buck Mountain Bridge Realignment and Widening	(Van Duzen)	Y	-	-	-	15.2	109.35%	SWPPP	C	1/30/2015	3/1/2016	2/1/2017	1/1/2019
30	010E930	Humboldt	36	VAR	VAR	1	Little Buck Safety Realign and Improve Geometrics	(Eel River), Van Duzen River	TBD	-	-	TBD	TBD	TBD	TBD	C	8/1/2017	8/1/2018	4/1/2019	12/1/2019
31	010A120	Humboldt	96	0.24	37.25	1	Three HUM Bridges Seismic Restoration	(Trinity River)	Y	Tribal EPA	-	TBD	TBD	-	TBD	E	2/1/2019	12/1/2019	1/9/2020	9/1/2024
32	010A990	Humboldt	96	6.2	6.6	1	Sugar Bowl Ranch Curve Improvement	(Trinity River)	Y	-	-	3	1.37	21	SWPPP	BS	4/29/2015	10/15/2015	4/27/2016	9/1/2016
33	010B03U	Humboldt	96	8.3	8.9	Hoopa	Hoopa Vista Point Curve Improvement	(Trinity River)	Y	-	-	3.3	0.5	-	TBD	E	6/27/2014	4/6/2015	10/13/2015	12/1/2017
34	146480	Humboldt	101	1.1	2.2	1	Richardson Grove Operational Improvement Project	(Eel River)	Y	-	-	0.73	0.29	-	WPCP	E	11/1/2016	9/1/2017	12/31/2018	5/1/2020
35	010E770	Humboldt	101	17.89	87.84	1	HUM 101 Strengthen Three Bridges	(SF Eel River)	Y	-	-	TBD	TBD	TBD	TBD	C	6/1/2018	4/1/2019	12/25/2020	12/24/2021
36	010A110	Humboldt	101	27.7	53.9	1	Eel River Bridge Seismic Retrofit	Eel River	N	ROWD	-	<1	0	-	WPCP	E	11/1/2016	8/1/2017	5/9/2018	5/1/2020
37	10A111	Humboldt	101	27.7	27.7	1	Bridge Seismic Retrofit	SF Eel River	TBD	TBD	TBD	TBD	TBD	TBD	TBD	TBD	11/1/2018	8/1/2019	6/1/2020	11/1/2021
38	010C570	Humboldt	101	69.9	75.2	1	Pavement Preservation	(Elk River)	N	-	-	-	-	-	TBD	E	7/1/2014	10/13/2015	4/25/2016	7/2/2018
39	010E670	Humboldt	101	75	77.97	1	Modify Signals	(Humboldt Bay)	N	-	-	-	-	-	WPCP	E	10/3/2017	11/30/2018	7/15/2019	10/15/2020
40	010B620	Humboldt	101	75.3	77.6	1	ADA Curb and Ramp Upgrades	Elk River, Freshwater Creek	Y	-	-	1.24	0.3	TBD	SWPPP	C	6/1/2018	12/1/2019	9/1/2020	7/1/2022
41	010C710	Humboldt	101	77	77.5	1	Intersection Control Evaluation	(Humboldt Bay)	N	-	-	0	0	-	-	E	4/1/2017	4/1/2018	2/1/2019	11/1/2019
42	010C110	Humboldt	101	77.5	77.5	1	Rehab or Replace D1 Materials Lab	Humboldt Bay	N	-	-	TBD	TBD	TBD	TBD	C	4/1/2019	5/1/2020	12/1/2020	6/1/2022
43	010E040	Humboldt	101	78	79.8	1	Eureka CAPM	(Freshwater Creek), (Humboldt Bay)	N	-	-	TBD	TBD	TBD	TBD	E	12/25/2017	6/18/2019	2/19/2020	3/19/2020
44	010E680	Humboldt	101	78.02	79.44	1	4th Street Safety Traffic Calming	(Humboldt Bay)	N	-	-	-	-	-	TBD	E	6/21/2016	12/1/2017	11/1/2018	12/1/2019
45	136600	Humboldt	101	79.8	85.8	1	Eureka/Arcata Corridor Improvements	(Freshwater Creek), (Humboldt Bay), (Jacoby Creek)	Y	-	-	52	9	-	SWPPP	C	7/1/2015	10/15/2016	7/12/2017	8/1/2019
46	010C970	Humboldt	101	79.9	86.3	1	Eureka/Arcata Corridor MBGR	(Humboldt Bay), (Jacoby Creek), (Freshwater Creek)	N	-	-	TBD	-	-	TBD	C	1/15/2017	3/1/2017	11/15/2017	7/1/2019

Table 6-1: District I Anticipated Project Development and Construction Schedule

No.	EA	Project Location					Project Description ^{2,3}	Water Bodies Within or Adjacent to Project Limits ⁴	Dredge and Fill Activities (Y/N/NA) ⁵	Other Regional Water Board Permits Required ⁶	Potential and Actual Impacts of Project's Discharge ⁷	Disturbed Soil Area (acres)	Area of New Impervious Surface (acres)	Percentage of New Impervious Surface to Existing Impervious Surface	Description of Construction Controls (SWPPP/WPCP/TBD) ⁸	Post-Construction Treatment Control Type, Quantity ⁹	Anticipated Project Delivery Schedule		Construction Period	
		Co.	Route	Begin PM	End PM	RB ¹											PA&ED Date	PS&E Date	Start Date	End Date
47	010E000	Humboldt	101	84.5	84.7	1	Corridor Bridge Rails	(Jacoby Creek), (Freshwater Creek), (Humboldt Bay)	Y	-	-	1.53	0.02	< 1	SWPPP	C	1/15/2017	4/1/2018	11/15/2018	11/1/2020
48	010E100	Humboldt	101	87.7	88	1	Two Bridges Clean and Paint	McDaniel Slough	N	-	-	0	0	-	WPCP	E	2/1/2018	7/15/2019	1/1/2020	11/1/2021
49	010E650	Humboldt	101	88.2	88.3	1	Off-ramp Improvement	Humboldt Bay, Frontal-Pacific Ocean	Y	-	-	4.4	0.64	128.00%	SWPPP	C	9/1/2018	11/1/2019	5/1/2020	7/1/2021
50	010E890	Humboldt	101	88.3	88.6	1	Upgrade Highway Ramps	(SF Eel River)	N	-	-	TBD	TBD	TBD	TBD	TBD	7/5/2018	8/13/2020	3/23/2021	9/13/2022
51	0148040	Humboldt	101	98.4	100.7	1	Trinidad Rancheria Interchange	McConnahas Mill Creek, Luffenholtz Creek	N	-	-	-	-	-	TBD	C	10/1/2018	6/1/2019	4/1/2020	7/1/2023
52	010C440	Humboldt	101	102.9	105.2	1	Rehab Safety Roadside	Savage Creek	Y	-	-	-	-	-	TBD	C	10/1/2017	8/1/2018	4/1/2019	5/1/2020
53	010B420	Humboldt	101	110.6	113.8	1	Construct Buttress and Dewater Slope	Big Lagoon	Y	-	-	3.1	0	0	SWPPP	E	6/30/2015	11/23/2016	9/4/2017	12/1/2018
54	010B430	Humboldt	101	111.4	111.6	1	Big Lagoon (Walls) Slipout Repair	Big Lagoon	Y	-	-	1	0	0	SWPPP	E	7/24/2015	12/30/2015	9/30/2016	10/1/2018
55	010B240	Humboldt	101	VAR	VAR	1	Humboldt County Bridge Deck Repair	(South Fork Van Duzen), Hostler Creek, Boyes Creek, Miners Creek, (West Fork Willow Creek), (Van Duzen River), (Eel River), (Trinity River), (Mad River), (Redwood Creek), (Klamath River)	N	-	-	< 1	0	0	WPCP	E	1/15/2015	3/27/2015	7/20/2015	10/1/2017
56	010B440	Humboldt	169	26.4	29.9	1	Weitchpec Slipouts	(Klamath River)	Y	Tribal EPA	-	> 1	0	0	SWPPP	E	12/2/2014	5/20/2016	12/15/2016	12/1/2017
57	0143050	Humboldt	169	33.5	33.8	1	Weitchpec Curve	(Klamath River)	N	-	-	1	TBD	TBD	SWPPP	E	9/1/2018	12/1/2019	9/1/2020	7/1/2023
58	0143060	Humboldt	254	0.8	43.1	1	Avenue of the Giants Four Bridges Project	(South Fork Eel River), (Eel River)	N	ROWD	-	0.2	0	-	WPCP	E	6/15/2016	6/17/2016	2/1/2017	7/1/2019
59	0147531	Humboldt	254	4.4	11.2	1	Three Culverts Repair	(South Fork Eel River)	Y	-	-	TBD	-	-	TBD	C	3/1/2017	12/1/2017	9/5/2018	10/1/2019
60	0140950	Humboldt	254	6.8	42.1	1	Avenue Culvert Rehab	(Eel River)	Y	-	-	0.1	0	-	WPCP	C	7/1/2017	1/1/2018	3/1/2018	12/1/2022
61	0148960	Humboldt	254	42.2	42.2	1	Bank Stabilization	(Eel River)	NA	-	-	-	-	-	TBD	E	4/1/2020	12/1/2020	10/1/2021	7/1/2024
62	0136601	Humboldt	255	6	7.6	1	Eureka/Arcata Corridor Mitigation	(Humboldt Bay)	Y	-	-	TBD	0	0	TBD	C	7/1/2018	10/15/2018	12/13/2018	10/1/1930
63	010A280	Humboldt	283	0.1	0.4	1	Seismic Retrofit	Eel River	TBD	TBD	TBD	TBD	TBD	TBD	TBD	TBD	4/27/2018	6/5/2020	1/11/2021	7/5/2022
64	010E840	Humboldt	283	0.12	0.12	1	Clean and Paint Eel River OH	(Eel River)	N	ROWD	-	0	0	-	WPCP	E	6/15/2016	2/1/2017	10/1/2017	3/1/2019
65	010E610	Humboldt	299	5.69	5.69	1	Blue Lake Sink Hole Repair	Mad River, Mill Creek	N	-	-	2.5	0.5	0	SWPPP	C	TBD	TBD	3/1/2018	11/1/2018
66	0149830	Humboldt	299	5.7	38.6	1	Grind-in Shoulder Rumble to Willow Creek	(Mad River), (Redwood Creek), (Trinity River)	N	-	-	-	-	-	WPCP	E	10/1/2015	3/31/2017	11/7/2017	2/15/2019
67	0149210	Humboldt	299	9.42	34.2	1	Reconstruct Drainage	(Mad River), (Redwood Creek), (Trinity River)	Y	-	-	-	-	-	TBD	E	6/1/2018	7/1/2019	7/1/2020	12/1/2021

Table 6-1: District 1 Anticipated Project Development and Construction Schedule

No.	EA	Project Location					Project Description ^{2,3}	Water Bodies Within or Adjacent to Project Limits ⁴	Dredge and Fill Activities (Y/N/NA) ⁵	Other Regional Water Board Permits Required ⁶	Potential and Actual Impacts of Project's Discharge ⁷	Disturbed Soil Area (acres)	Area of New Impervious Surface (acres)	Percentage of New Impervious Surface to Existing Impervious Surface	Description of Construction Controls (SWPPP/WPCP/TBD) ⁸	Post-Construction Treatment Control Type, Quantity ⁹	Anticipated Project Delivery Schedule		Construction Period	
		Co.	Route	Begin PM	End PM	RB ¹											PA&ED Date	PS&E Date	Start Date	End Date
68	010E030	Humboldt	299	16.1	26.6	1	Slope Repair and Drainage Improvements	(Redwood Creek)	Y	-	-	TBD	TBD	TBD	TBD	C	2/1/2018	6/1/2023	12/6/2023	4/23/2025
69	010A520	Humboldt	299	21.1	21.4	1	Curve Improvement	Lupton Creek, Redwood Creek	Y	-	-	1.89	0.38	24	SWPPP	BS	3/21/2014	2/1/2015	7/28/2015	1/1/2017
70	010A370	Humboldt	299	23.6	23.9	1	Sabertooth Shoulder Widening Curve Improvement	(Redwood Creek)	Y	-	-	3	0.58	33.7	SWPPP	BS	10/12/2015	1/2/2016	7/1/2016	12/1/2017
71	010A490	Humboldt	299	25	25.9	1	Circle Point Curve Improvement	(Redwood Creek)	Y	-	-	6.9	1.38	26	SWPPP	BS	5/19/2015	9/21/2015	6/1/2016	7/1/2017
72	010E570	Humboldt	101/299	27.07/ 70.61/ 89.63/ R1.56/ 42.95	-	1	Bridge Deck Rehabilitation	(Eel River), Humboldt Bay, Mad River, (Trinity River)	N	ROWD	-	0	0	0	WPCP	E	3/2/2016	4/13/2015	6/23/2016	4/2/2018
73	010A460	Humboldt and Mendocino	1/271/ 254	-	-	1	8 Bridges Scour Repair	Garcia River, Elk Creek, (Navarro River), Cottonvena Creek, (SF Eel River), Greenlaw Creek, (Eel River)	Y	-	TBD	TBD	0	0	TBD	TBD	3/15/2016	11/1/2016	5/1/2017	11/1/2017
74	010C160	Lake	20	2.35	40.35	5	Lake 20 Stormwater; Slope and Drainage System Improvements	(Clear Lake), (Cache Creek)	Y	-	-	TBD	TBD	TBD	TBD	C	3/1/2022	6/1/2023	1/1/2024	6/30/2036
75	010B120	Lake	20	13.5	30.5	5	CAPM/ADA Portion	(Cache Creek), (Clear Lake)	N	-	-	0.17	0	-	WPCP	E	7/1/2015	5/15/2016	11/24/2016	8/1/2018
76	010A510	Lake	20	28.2	28.85	5	Clearlake SRTS / CT Oversight	(Clear Lake)	NA	-	-	-	-	-	-	E	4/1/2016	-	7/1/2016	8/1/2016
77	010C810	Lake	20	31.2	32	5	Lake 20/53 Intersection Improvement	(Cache Creek), (Clear Lake)	Y	-	-	TBD	TBD	TBD	TBD	C	9/1/2016	11/15/2017	6/1/2018	12/1/2019
78	010C750	Lake	29	9.6	10.3	5	Lake 29/Hartman Road Roundabout	Upper Putah Creek	Y	-	-	7.1	2.1	105%	SWPPP	C	7/1/2016	10/15/2017	4/1/2018	2/15/2020
79	010E720	Lake	29	12.78	14.35	5	Hofacker Lane Shoulder Widening	(Clear Lake)	N	-	-	2	1.9	TBD	SWPPP	C	10/1/2018	9/15/2019	1/9/2020	7/8/2021
80	010E730	Lake	29	17.74	20.73	5	Lake 29 Widening and Truck Lane	(Cache Creek)	Y	-	-	-	-	-	TBD	C	6/4/2015	2/1/2016	9/1/2016	10/1/2017
81	0148750	Lake	29	20.4	20.6	5	Shoulder Widening	Seigler Canyon Creek	N	-	-	-	-	-	TBD	C	9/1/2018	12/1/2019	8/1/2020	10/1/2021
82	012981U	Lake	29	23.8	31.6	5	Lake 29 Expressway Upgrade to 4 Lane	Cache Creek	Y	-	-	326	92	-	SWPPP	BS, 40	3/20/2016	12/1/2017	8/15/2018	12/1/2021
83	010E640	Lake	29	34.17	34.5	5	Cruikshank Safety Left Hand Turn and Accel Lane	(Cache Creek), Cole Creek	N	-	-	2.5	0.4	0	SWPPP	C	7/15/2016	7/15/2017	1/1/2018	1/1/2019
84	010E080	Lake	29	38.9	50.8	5	Bridge Rail Upgrade Five Bridges	(Cache Creek), (Clear Lake), Kelsey Creek	N	-	-	TBD	TBD	TBD	TBD	E	2/1/2018	7/15/2019	1/1/2020	11/1/2021
85	010B690	Lake	29	41.42	41.42	5	Lakeport OC ADA	TBD	N	-	-	0.3	0.3	0	TBD	E	9/4/2015	-	4/29/2016	12/29/2017

Table 6-1: District 1 Anticipated Project Development and Construction Schedule

No.	EA	Project Location					Project Description ^{2,3}	Water Bodies Within or Adjacent to Project Limits ⁴	Dredge and Fill Activities (Y/N/NA) ⁵	Other Regional Water Board Permits Required ⁶	Potential and Actual Impacts of Project's Discharge ⁷	Disturbed Soil Area (acres)	Area of New Impervious Surface (acres)	Percentage of New Impervious Surface to Existing Impervious Surface	Description of Construction Controls (SWPPP/WPCP/TBD) ⁸	Post-Construction Treatment Control Type, Quantity ⁹	Anticipated Project Delivery Schedule		Construction Period	
		Co.	Route	Begin PM	End PM	RB ¹											PA&ED Date	PS&E Date	Start Date	End Date
86	010A040	Lake	175	24	27.5	5	Lake 175 - Middletown Shoulder Widening	Upper Putah Creek, Dry Creek	Y	-	-	12	4	30.77%	SWPPP	C	12/15/2016	1/15/2018	7/15/2018	4/15/2021
87	010E820	Lake	Various	-	-	5	Upgrade East Lake TMS	(Clear Lake)	N	-	-	<1	0	0	WPCP	E	5/1/2018	7/1/2019	12/1/2019	12/1/2023
88	0144060	Mendocino	1	12.3	74.6	1	Construct turnouts	Garcia River, Ten Mile River	N	-	-	TBD	TBD	TBD	TBD	E	2/1/2017	2/1/2017	7/15/2018	10/15/2018
89	010E110	Mendocino	1	31.35	31.35	1	Two Bridges Clean and Paint	Elk Creek	N	-	-	-	-	-	WPCP	E	4/6/2020	8/9/2021	7/12/2022	1/10/2024
90	010C550	Mendocino	1	41.75	42.25	1	Navarro Ridge Safety Project	(Navarro River)	Y	-	-	TBD	TBD	TBD	TBD	C	2/1/2018	4/1/2019	5/1/2020	10/15/2021
91	010E940	Mendocino	1	42.3	42.4	1	Navarro Drainage Reconstruct Drainage	(Navarro River)	Y	-	-	-	-	-	TBD	E	7/15/2016	3/15/2018	11/30/2018	12/1/2019
91	0140140	Mendocino	1	42.4	43.3	1	Salmon Creek Bridge Replacement	Salmon Creek	Y	-	-	TBD	TBD	TBD	TBD	C	6/12/2015	2/1/2017	9/4/2017	12/1/2018
92	010E240	Mendocino	1	43.3	44.2	1	Mendocino Mitigation Bank	(Albion River)	Y	-	-	TBD	0	-	TBD	E	8/15/2016	7/1/2017	1/15/2018	1/15/2019
93	0140110	Mendocino	1	43.3	44.2	1	Albion River Bridge Replacement	(Albion River)	Y	-	-	6.6	2	-	SWPPP	C	2/1/2018	4/4/2019	2/6/2020	11/4/2021
94	010E200	Mendocino	1	43.6	70	1	MEN 1 Three Bridges Rehab	(Albion River), (Big River), (Noyo River), (Ten Mile River)	N	ROWD	-	-	-	-	TBD	E	9/1/2016	10/23/2017	3/1/2018	10/15/2019
95	0143480	Mendocino	1	48.05	62.12	5	Three Bridges Rail Upgrade and Widening	(Big River), (Noyo River), (Pudding Creek)	Y	-	-	3.6	0.63	-	SWPPP	E	9/1/2017	2/15/2018	12/12/2018	11/1/2020
96	010C920	Mendocino	1	55	55.3	1	Caspar "Flashing Beacons"	TBD	N	-	-	-	-	-	WPCP	E	11/1/2015	6/20/2017	1/2/2018	2/1/2019
97	010E111	Mendocino	1	59.8	59.8	1	Hare Creek Bridge Rail Upgrade and Widening	Pudding Creek-Frontal Pacific Ocean	Y	-	-	TBD	TBD	TBD	TBD	C	10/1/2018	1/1/2020	12/1/2020	10/1/2022
98	0136270	Mendocino	1	62.1	78.9	1	Pudding Creek CAPM	Noyo River, Pudding Creek	N	-	-	<1	0	0	WPCP	E	10/1/2019	12/1/2020	6/1/2021	10/1/2022
99	0141530	Mendocino	1	87.9	90.9	1	CAPM	Wages Creek	N	-	-	<1	0	0	WPCP	E	3/1/2020	4/1/2022	12/1/2022	11/1/2024
100	010E860	Mendocino	20	16.95	17.1	1	MEN 20 Widen Shoulders and MBGR	(Big River)	Y	-	-	TBD	TBD	TBD	TBD	C	12/15/2017	12/15/2018	5/15/2019	10/28/2021
101	010E090	Mendocino	20	33.4	34.2	1	Bridge Deck Rehabilitation	(Russian River)	N	-	-	TBD	TBD	TBD	TBD	E	9/1/2018	1/15/2020	9/1/2020	3/1/2023
102	010E470	Mendocino	20	37.84	38.34	1	MEN 20 and Potter Valley Road Resurfacing	(Russian River)	N	-	-	0.2	-	0%	WPCP	E	8/1/2017	2/1/2018	9/1/2018	12/1/2019
103	0146630	Mendocino	101	0	9.6	1	Hopland CAPM	(Russian River)	N	-	-	<1	0	0	WPCP	E	4/1/2019	10/15/2019	6/1/2020	2/1/2022
104	010C760	Mendocino	101	0.7	3	1	Install Median Barrier	(Russian River)	N	-	-	0.63	0	0	WPCP	E	3/9/2016	10/1/2016	6/1/2017	4/1/2018
105	010B500	Mendocino	101	3.7	5.3	1	Repair Slipouts. Soldier Pile	(Russian River)	Y	-	-	4.9	0.79	35	SWPPP	BS	4/3/2015	3/26/2016	7/15/2016	12/1/2019
106	010C430	Mendocino	101	20	45.89	1	3 MEN Bridges Scour Mitigation	(Russian River)	Y	-	-	-	-	-	TBD	E	9/1/2016	6/1/2017	4/1/2018	10/1/2020
107	010A760	Mendocino	101	23.5	-	1	Talmage Road Interchange	(Russian River)	N	-	-	1.8	0	0	SWPPP	E	8/31/2016	-	11/8/2016	4/15/2017
108	0129302	Mendocino	101	42.1	42.1	1	Upgrade Bridge Rail South Willits OH	Davis Creek, (Upper Main Eel River)	N	-	-	0.2	-	-	WPCP	E	7/15/2015	1/15/2016	9/1/2016	12/1/2018

Table 6-1: District I Anticipated Project Development and Construction Schedule

No.	EA	Project Location					Project Description ^{2,3}	Water Bodies Within or Adjacent to Project Limits ⁴	Dredge and Fill Activities (Y/N/NA) ⁵	Other Regional Water Board Permits Required ⁶	Potential and Actual Impacts of Project's Discharge ⁷	Disturbed Soil Area (acres)	Area of New Impervious Surface (acres)	Percentage of New Impervious Surface to Existing Impervious Surface	Description of Construction Controls (SWPPP/WPCP/TBD) ⁸	Post-Construction Treatment Control Type, Quantity ⁹	Anticipated Project Delivery Schedule		Construction Period	
		Co.	Route	Begin PM	End PM	RB ¹											PA&ED Date	PS&E Date	Start Date	End Date
109	0126200	Mendocino	101	43.1	49	1	Willits Bypass	Baechtal, Broaddus, Haehl, Upper Haehl, Mill, and Outlet Creeks	Y	-	-	220	40.5	-	SWPPP	BS, 79	12/18/2006	9/26/2011	7/15/2012	12/31/2017
110	0126203	Mendocino	101	45.3	47.9	1	Willits Bypass Relinquishment	Mill Creek, Broaddus Creek, Outlet Creek	N	-	-	0	0	0	TBD	C	5/18/2015	3/1/2017	1/1/2018	12/31/2019
111	010B830	Mendocino	101	47	47.6	1	Willits Sidewalks ADA Upgrade	TBD	N	-	-	-	-	-	TBD	E	8/7/2015	-	4/29/2016	12/29/2017
112	0126204	Mendocino	101	47.2	47.3	1	Sherwood Road Geometric Upgrades - Willits Bypass	(Eel River)	N	-	-	-	-	-	SWPPP	C	5/28/2015	12/1/2016	1/1/2018	12/31/2019
113	0126201	Mendocino	101	52	52.6	1	Ryan Creek Fish Passage	Ryan Creek, Outlet Creek, (Eel River)	Y	-	-	1.3	0.14	0	SWPPP	E	6/4/2014	10/1/2015	4/1/2016	12/31/2017
114	010C450	Mendocino	101	58.9	82.5	1	Rehabilitate Water and Waste Systems at Moss Cove and Empire Camp SRRA's	(Eel River), (Outlet Creek), (SF Eel River), Rattlesnake Creek	TBD	-	-	TBD	TBD	TBD	TBD	C	10/1/2017	12/1/2019	8/15/2020	10/1/2024
115	010C370	Mendocino	101	89.2	89.2	1	Cedar Creek Culvert Fish Passage	(Eel River)	Y	-	-	0.77	0	-	WPCP	E	6/4/2015	4/1/2016	9/1/2016	11/1/2019
116	010B510	Mendocino	101	93.2	R93.2	1	Repair Slide and Slipout	(South Fork Eel River)	N	-	-	0.6	0	0	WPCP	E	8/15/2015	4/15/2016	10/1/2016	12/1/2017
117	0148400	Mendocino	101	104.5	104.5	1	Reconstruct Drainage	(Eel River)	Y	-	-	0.25	0	-	WPCP	E	1/2/2016	1/2/2017	7/1/2017	10/1/2018
118	0137817	Mendocino	128	0.2	11.1	1	76 Culverts - Lower Navarro River Culvert Rehab	(North Fork Navarro), Mustard Gulch, Roller Gulch, Ray Gulch, Barton Gulch, (Navarro River), Rancharia Creek	Y	-	-	TBD	TBD	TBD	TBD	C	6/27/2005	4/1/2015	10/15/2015	11/1/2017
119	010B520	Mendocino	128	39.5	39.5	1	Stabilize Roadway	Beebe Creek (Navarro River)	N	-	-	0.5	0	0	WPCP	E	8/13/2015	4/22/2015	1/15/2017	7/1/2018
120	010E380	Mendocino	162	1.2	34	1	Repair or Replace 18 Culverts	(Eel River), (MF Eel River), Outlet Creek, Mill Creek	Y	-	-	TBD	TBD	TBD	TBD	C	11/1/2016	4/1/2017	4/1/2018	4/1/2019
121	010B530	Mendocino	162	11.5	11.8	1	Rodeo Creek Slide II	(Eel River)	TBD	-	-	TBD	TBD	TBD	TBD	C	8/1/2017	10/15/2018	6/1/2019	12/30/2021
122	010B540	Mendocino	162	13.9	22.7	1	Dos Rios Slips	(Eel River)	N	-	-	1.3	0	0	SWPPP	E	8/13/2015	4/15/2016	12/15/2016	12/15/2017
123	010B550	Mendocino	162	16.1	16.1	1	Stabilize Roadway	Outlet Creek	Y	-	-	0.62	TBD	TBD	WPCP	E	10/16/2015	10/15/2016	7/1/2017	12/1/2019
124	010B560	Mendocino	253	1.5	1.8	1	Repair Slide	Anderson Creek, (Navarro River)	N	-	-	2.7	0.2	TBD	SWPPP	E	7/1/2015	11/15/2016	4/15/2017	10/1/2018
125	010B570	Mendocino	253	6.8	6.9	1	Stabilize Roadway	Anderson Creek, (Navarro River)	N	-	-	>1	0	0	SWPPP	E	5/16/2014	2/1/2015	9/15/2015	4/15/2017
126	010A840	Mendocino	271	17.7	18	1	McCoy Creek Bridge Replacement	(Eel River)	Y	-	-	1.2	0.37	69	SWPPP	C	2/1/2017	10/1/2017	7/1/2018	12/1/2020
127	010A130	Mendocino	101/162	10-82	10-236	1	Two Bridges Seismic Retrofit	Russian River, Eel River	TBD	TBD	TBD	TBD	TBD	TBD	TBD	TBD	4/23/2018	6/1/2020	1/7/2021	6/30/2022

Table 6-1: District 1 Anticipated Project Development and Construction Schedule

No.	EA	Project Location					Project Description ^{2,3}	Water Bodies Within or Adjacent to Project Limits ⁴	Dredge and Fill Activities (Y/N/NA) ⁵	Other Regional Water Board Permits Required ⁶	Potential and Actual Impacts of Project's Discharge ⁷	Disturbed Soil Area (acres)	Area of New Impervious Surface (acres)	Percentage of New Impervious Surface to Existing Impervious Surface	Description of Construction Controls (SWPPP/WPCP/TBD) ⁸	Post-Construction Treatment Control Type, Quantity ⁹	Anticipated Project Delivery Schedule		Construction Period	
		Co.	Route	Begin PM	End PM	RB ¹											PA&ED Date	PS&E Date	Start Date	End Date
128	010A470	Mendocino and Lake	101/162/253/175	Various	Various	1 and 5	7 Bridge Scour Repair	Kelsey Creek, Cole Creek, Maple Creek, (Russian River), Short Creek, (Outlet Creek), Robinson Creek, Austin Creek, Orrs Creek, (Broaddus Creek), Ten Mile Creek	Y	-	TBD	9	0	0	SWPPP	E	2/24/2016	3/1/2017	3/1/2017	2/1/2019
129	0142780	Various	20/29/53	1.0/ 46.3/ 6.1/ 48.8, 5.2/ 5.7	-	5	Lak 20/29/53 Culvert Rehab	(Clear Lake), (Cache Creek), Putah Creek	Y	-	-	> 1	TBD	TBD	SWPPP	C	8/1/2016	1/1/2018	5/23/2018	2/1/2020
130	010B820	Various	Various	Various	Various	1	Upgrade Metal Beam Guardrail	-	N	-	-	-	-	-	WPCP	E	10/12/2015	12/15/2016	7/1/2017	12/15/2018

BMP Device Types:	
BS	Biofiltration Strips and/or Swales
C	Under Consideration
D	Detention Devices
E	Exempt
DWFD	Dry Weather Flow Diversion
GSRD	Gross Solids Removal Devices
ID	Infiltration Devices – Water quality volume infiltrates within the right of way. (When this is demonstrated for at least 90% of the WQV, other types of treatment BMPs are not considered unless there is a location-specific requirement.)
MF	Media Filters
MCTT	Multi-chambered Treatment Trains
TST	Traction Sand Traps
WB	Wet Basins

Table 6-2 lists the planned maintenance projects that will disturb soil.

Table 6-2: District 1 Anticipated Significant Road Maintenance Activities

No.	Co.	Route	Beg PM	End PM	Regional Board	Description	Water Bodies Affected ¹⁰	Other Regional Water Board Permits Required ¹¹	Potential and Actual Impacts of Project's Discharge ¹²	Disturbed Soil Area (acres)	Area of New Impervious Surface (acres)	Percentage of New Impervious Surface to Existing Impervious Surface	Description of Construction Controls (SWPPP/WPCP/TBD/NA) ¹³	Post-Construction Treatment Control Type, Quantity ¹⁴	Start Date	Completion Date
None																

Treatment Control Status Legend	
BMP Device Types:	
BS	Biofiltration Strips and/or Swales
C	Under Consideration
D	Detention Devices
E	Exempt
DWFD	Dry Weather Flow Diversion
GSRD	Gross Solids Removal Devices
ID	Infiltration Devices – Water quality volume infiltrates within the right of way. (When this is demonstrated for at least 90% of the WQV, other types of treatment BMPs are not considered unless there is a location-specific requirement.)
MF	Media Filters
MCTT	Multi-chambered Treatment Trains
TST	Traction Sand Traps
WB	Wet Basins

¹⁰ Receiving waters within or adjacent to maintenance activity designated as “303(d) (constituent type).” Activity adjacent to Drinking Water Reservoir or Ground Water Recharge Facilities designated as “DW.”

¹¹ Regional Water Board Permits required other than Construction General Permit, such as Clean Water Act Section 401 water quality certification, Waiver of Discharge Requirements, Dewatering Permits, Bridge Painting WDRs, etc.

¹² This information may come from the Water Quality Assessment Report prepared for each project, a Water Quality Technical Memorandum, or other document that evaluates the water quality impacts of a project.

¹³ A description of the Construction Controls is available in the project’s Storm Water Pollution Prevention Plan (SWPPP), Water Pollution Control Plan (WPCP), is To Be Determined (TBD) if the Disturbed Soil Area is unavailable, or is Not Applicable (NA) because there is no Disturbed Soil Area associated with the project.

¹⁴ Treatment Control Status identified by: device type/number of devices, exempt (“E”), or under consideration (“C”). See Treatment Control Status Legend below for device type abbreviations.

Table 6-3 lists the District's planned monitoring activities.

Table 6-3: District 1 Monitoring Activities

Statewide Monitoring Program Activities
All monitoring in the District related to the statewide storm water permit is performed by Headquarters.

This page was intentionally left blank.

7 Region-Specific Activities

Section 7 of the DWP identifies the applicable region-specific activities that District 7 has planned for the fiscal year 2017-18 to comply with Attachment V of the Conformed NPDES Permit.

North Coast Region

Riparian Vegetation Removal

This requirement has been moved to Attachment IV.

Sediment prioritization is not required if the Department is implementing the requirements of Attachment IV for sediment TMDLs. The District anticipates that Headquarters will continue implementing the requirements in Attachment IV.

Notification to NCRWQCB: Routine Maintenance Work within NCRWQCB Jurisdiction

Table 7-1 below has been included as notification of upcoming work over water. Many of the projects will not result in generating disturbed soil areas. Standard Caltrans Best Management Practices combined with the Caltrans Maintenance Staff Guide will be implemented in an effort to avoid and minimize the potential for sediment discharges and/or to implement temporary erosion control measures. Table 7-1 lists the anticipated routine maintenance work within the North Coast RWQCB jurisdiction.

This page was intentionally left blank.

Table 7-1: District 1 Maintenance Notifications to the North Coast Regional Water Quality Control Board

Project Location						RWQCB	Water Bodies Within or Adjacent to Project Limits	Maintenance Activities	Disturbed Soil Area (acres)	Water Pollution Control Strategy (BMPs)	Construction Period	
No.	EA	CO	Rte	Begin PM	End PM						Start Date	End Date
1	01-0C590	HUM DN DN	101	109.16 10.86 12.61	109.27 10.87 12.72	1	Big Lagoon Unnamed Stream Wilson Creek	Upgrade MBGR/End Treatment	NA	Water Pollution Control Plan (Chapter 13 of Caltrans Standard Specifications); Caltrans Maintenance Staff Guide.	6/1/2017	12/1/2018
2	01-0E840	HUM	283	0.12	0.32	1	Lower Eel River	Clean and paint bridge over the Eel River	NA	Water Pollution Control Plan (Chapter 13 of Caltrans Standard Specifications); Caltrans Maintenance Staff Guide.	9/1/2017	3/1/2019
3	01-0B820	HUM MEN MEN MEN MEN HUM	101 20 101 101 101 101	114.53 32.81 14.62 93.69 96.48 97.42 74.59	114.56 32.82 14.63 93.77 96.51 97.51 74.62	1	McDonald Creek Broadus Creek Crawford Creek Rock Creek Dora Creek Bridges Creek Elk River Bridge	Upgrade MBGR/End Treatment	NA	Water Pollution Control Plan (Chapter 13 of Caltrans Standard Specifications); Caltrans Maintenance Staff Guide.	5/15/2017	12/15/2018
4	01-0E100	HUM	101 96	87.8 12.25	87.8 12.36	1	Janes Creek Trinity River	Clean and paint steel portions	NA	Water Pollution Control Plan (Chapter 13 of Caltrans Standard Specifications); Caltrans Maintenance Staff Guide.	7/1/2017	7/1/2019
5	01-0F400	HUM HUM HUM DN	211 101 96 101	R75.15 R51.99 R39.48 9.39	R75.55 R52.25 R39.56 9.42	1	Salt River Lower Eel River Pearch Creek High Prairie Creek	Clean and Repair Bridge Decks and Joint Seals	Less than 0.01 Acre	Water Pollution Control Plan (Chapter 13 of Caltrans Standard Specifications); Caltrans Maintenance Staff Guide.	4/1/2017	7/1/2017

Table 7-1: District 1 Maintenance Notifications to the North Coast Regional Water Quality Control Board

Project Location						RWQCB	Water Bodies Within or Adjacent to Project Limits	Maintenance Activities	Disturbed Soil Area (acres)	Water Pollution Control Strategy (BMPs)	Construction Period	
No.	EA	CO	Rte	Begin PM	End PM						Start Date	End Date
6	01-0F410	MEN	01	18.5	18.6	1	Garcia River	Clean and Repair Bridge Decks and Joint Seals	Less than .01 Acre	Water Pollution Control Plan (Chapter 13 of Caltrans Standard Specifications); Caltrans Maintenance Staff Guide.	4/1/2017	7/1/2017
		MEN	01	43	43.2	1	Salmon Creek					
		MEN	01	60.23	60.39	1	Noyo River					
		MEN	101	R24.32	R24.33	1	Gibson Creek (L&R)					
		MEN	101	R25.72	R25.81	1	Presswood OH					
		MEN	101	61.82	61.83	1	Long Valley					
		MEN	128	43.44	43.51	1	Creek					
		MEN	162	0.7	0.75	1	Dry Creek					
	LAK	20	8.56	8.6	5	Outlet Creek Middle Creek						
7	01-0E470	MEN	20	37.84	38.34	1	Cold Creek	Bridge Striping	NA	Water Pollution Control Plan (Chapter 13 of Caltrans Standard Specifications); Caltrans Maintenance Staff Guide.	3/1/2018	12/1/2019