

**California Department of Transportation
Stormwater Management Program
District 3 Work Plan**

Fiscal Year

2017-2018

CTSW-RT-16-316.11.1



California Department of Transportation
Division of Environmental Analysis
Stormwater Management Program
703 B Street, Marysville, California 95901

<http://www.dot.ca.gov/hq/env/stormwater>

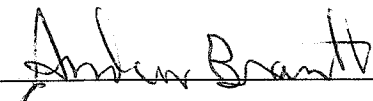
October 1, 2016



For individuals with sensory disabilities, this document is available in alternate formats upon request. Please call or write to the Stormwater Liaison, Caltrans Division of Environmental Analysis, MS-27, P.O. Box 942874, Sacramento, CA 94274-0001, (916) 653-8896 Voice, or dial 711 to use a relay service.

**California Department of Transportation
District 3 Certification
District Work Plan 2017-18**

I certify under penalty of law that this document and all attachments were prepared under my direction or supervision in accordance with a system designed to assure that qualified personnel properly gather and evaluate the information submitted. Based on my inquiry of the person or persons who manage the system, or those persons directly responsible for gathering the information, the information submitted is to the best of my knowledge and belief, true, accurate, and complete. I am aware that there are significant penalties for submitting false information, including the possibility of fine and imprisonment of knowing violations. [40 CFR 122.22(d)]


for Amarjeet S. Benipal, District Director

8/30/16

Date

District 3

This page was intentionally left blank.

Table of Contents

1	Introduction	1-1
2	District Personnel and Responsibilities	2-1
3	District Facilities and Water Bodies	3-1
4	Drinking Water Reservoirs and Recharge Facilities.....	4-1
5	Slopes Prone to Erosion	5-1
6	Implementation.....	6-1
7	Region-Specific Activities	7-1

Figures

Figure 2-1: District 3 Organizational Chart	2-5
Figure 5-1: District 3 2016 Areas Prone to Erosion.....	5-3

Tables

Table 2-1: District 3 Stormwater Personnel and Responsibilities	2-2
Table 2-2: District 3 Signatory Authority for Key Documents.....	2-3
Table 4-1: District 3 Drinking Water Reservoirs and Recharge Facilities	4-1
Table 5-1: District 3 Inventory of Road Segments Prone to Erosion.....	5-1
Table 6-1: District 3 Anticipated Project Development and Construction Schedule.....	6-3
Table 6-2: District 3 Anticipated Significant Road Maintenance Activities	6-13
Table 6-3: District 3 Monitoring Activities	6-15

This page was intentionally left blank.

1 Introduction

General Information about the District Work Plan

The District Work Plans (DWP) describe the organization of each California Department of Transportation (Caltrans) District's stormwater program and outline the planned stormwater activities for the upcoming fiscal year. They are prepared and submitted on October 1 each year. Since the DWP is District-specific, each Regional Water Quality Control Board (RWQCB or Regional Board) is provided a copy of the DWPs relevant to their jurisdiction.

This DWP presents information about District 3's water bodies, Best Management Practices (BMPs), and monitoring programs. It describes how the District will specifically implement the requirements of the Statewide Stormwater Management Plan (SWMP) during fiscal year 2017-18. Implementation activities will be conducted in accordance with the procedures presented in the SWMP. In addition, this DWP fulfills Provision E.3.b of the *National Pollutant Discharge Elimination System (NPDES) Statewide Storm Water Permit Waste Discharge Requirements (WDRs) for State of California Department of Transportation* (Order Number 2012-0011-DWQ, NPDES Number CAS000003, Effective July 1, 2013) (NPDES Permit). The NPDES Permit was amended by Orders WQ 2014-0006-EXEC (January 17, 2014), WQ 2014-007-DWQ (May 20, 2014), and WQ 2015-0036-EXEC (April 7, 2015). A conformed NPDES Permit was issued on April 7, 2015 (Conformed NPDES Permit), available on the California State Water Resources Control Board's (SWRCB) website:

http://www.swrcb.ca.gov/board_decisions/adopted_orders/water_quality/2012/wq2012_0011_dwq_conformed_signed.pdf.

The DWP's seven sections describe how the District plans to implement the stormwater program during the upcoming fiscal year. Section 1 introduces the DWP, describes its organizational structure, and identifies the key goals and commitments made by the District for the upcoming fiscal year. Section 2 describes the personnel with stormwater operations responsibilities in the District. In Section 3, the District's facilities are listed and categorized by type and location. Section 4 describes and identifies the high-risk locations where spills from the District's owned rights-of-way, roadways or facilities can discharge directly to a drinking water reservoir or ground water recharge facility. In Section 5, the District's road segments that are prone to erosion are identified. Section 6 summarizes the District's implementation activities, including projects that will be in the design and construction phases during the fiscal year, maintenance projects, and planned stormwater monitoring activities. Section 7 identifies the planned region-specific activities (if applicable) to address the requirements listed in Attachment V of the Conformed NPDES Permit.

District Goals and Commitments

District 3 is committed to stormwater management and water quality. The District continually works to implement the SWMP and ensure compliance with the Statewide Construction General Permit (CGP) and Conformed NPDES permit, including TMDL compliance.

The District continues to work with its partners and fellow agencies while working to gain new partnerships with local municipal organizations. The District values input from these agencies and hopes to become more efficient with local outreach and project development.

The District will continue to train staff from all divisions on stormwater issues through tailgate meetings and by conducting or attending formal classes on specific stormwater management strategies and activities.

As necessary, the District will evaluate what changes should be made to documentation, communication, and reporting accuracy. Internal stormwater documentation may be updated to reflect the changes.

This page was intentionally left blank.

2 District Personnel and Responsibilities

Section 2 of the DWP describes positions, addresses, and telephone numbers of personnel with responsibilities for stormwater operations within the District. This section also identifies positions having signatory authority for various notifications or documents required for submittal by a District (e.g., Project Registration Documents, including Notices of Intents or NOIs).

District Environmental Engineer Coordinator

The District Environmental Engineer Coordinator acts as the liaison with Headquarters, Regional Boards, and other District Stormwater Coordinators for the purpose of effective communication, collaboration and coordination of stormwater activities and regulatory compliance.

District NPDES Stormwater Coordinator

The District NPDES Stormwater Coordinators represent District 3 in daily activities with the Central Valley and Lahontan Regional Water Quality Control Boards regarding regulatory issues, preparing water quality assessment reports, providing oversight on water quality assessment reports prepared by consultants, and providing guidance to District and North Region staff on water quality issues.

Tahoe Regional Planning Agency (TRPA) Permit Coordinator

The TRPA Permit Coordinator obtains TRPA permit approvals for District projects within the Lake Tahoe Basin by coordinating early with the Project Development Team (PDT) members on design and permitting issues. In addition, the position provides various reports to management and the California Tahoe Conservancy and participates in public meetings.

Design Coordinator

The District/Regional Design Stormwater Coordinator is responsible for providing support to the District NPDES Coordinator and District Design staff throughout all phases of the project planning and design process.

Maintenance Coordinator

The Maintenance Stormwater Coordinators oversee District 3's Maintenance Stormwater Program and are responsible for ensuring compliance with the Stormwater Management Plan (SWMP). They serve as operations advisors to the Maintenance Stormwater Supervisors, prepare the annual Stormwater Operational Plan, conduct facility and field inspections, and generate reports.

Construction Coordinator

The Construction Coordinators provide technical expertise and advice, engineering support, plans and specifications reviews, and constructive feedback to Resident Engineers, designers, and contractors. They provide training programs designed to improve employee knowledge and awareness on water pollution prevention laws, regulations, and BMPs for construction projects in the District.

Right-of-Way (ROW) Coordinator

The ROW Stormwater Coordinator serves as point of contact for ROW Program inquiries, prepares a summary of completed stormwater property inspections for use in annual reports, and reports instances where ROW may conduct construction activities that require development of a Storm Water Pollution Prevention Plan (SWPPP) and related notifications.

Engineering Services (Hydraulics) Representative

The Hydraulics Representative provides assistance with treatment design.

Public Affairs Coordinator

The Public Affairs Coordinator organizes and plans public outreach and coordinates with local groups to arrange campaign presentations and activities.

Encroachment Permits Coordinator

The Encroachment Permits Stormwater Coordinator inspects permit work to assure compliance with engineering standards and specifications including BMPs. In addition, the position regularly attends meetings with the public, other agencies, private and public engineers, developers and manufacturers to discuss, advise and explain policies, procedures and permit requirements.

Table 2-1 lists staff members responsible for implementing the Stormwater Program.

Table 2-1: District 3 Stormwater Personnel and Responsibilities

Staff Name	Title	Phone No.	E-mail	Responsibility
Amarjeet S. Benipal	District Director	(530) 741-4233	Amarjeet.benipal@dot.ca.gov	North Region (Districts 1, 2, 3)
Carlos Portillo	Chief, North Region Environmental Planning	(530) 741-5461	Carlos.portillo@dot.ca.gov	North Region (Districts 1, 2, 3)
Doug Coleman	Office Chief, Office of Environmental Engineering, South	(530) 741-4539	Douglas.coleman@dot.ca.gov	District 3 Stormwater and Hazardous Waste
Veronica Wilson	NPDES Coordinator	(530) 741-4158	Veronica.wilson@dot.ca.gov	District 3 NPDES reports, enforcement, studies, and TMDL compliance
Sean Cross	NPDES Coordinator	(530) 741-4579	Sean.cross@dot.ca.gov	Projects in Colusa, Yolo, Sacramento and El Dorado Counties excluding the Lake Tahoe Hydrologic Unit
Darrell Naruto	NPDES Coordinator	(530) 741-4239	Darrell.naruto@dot.ca.gov	Projects in El Dorado (in Lake Tahoe Hydrologic Unit), Nevada, Placer, Sierra, Sutter and Yuba Counties
Rajive Chadha	NPDES Coordinator	(530) 741-4295	Rajive.chadha@dot.ca.gov	Projects in Glenn and Butte Counties
Wesley Faubel	Design & Eng. Services Stormwater Coordinator	(530) 225-3412	Wesley.faubel@dot.ca.gov	North Region (Districts 1, 2, 3)
Robert Polgar, Acting	Hydraulics Representative	(530) 741-4517	Robert.polgar@dot.ca.gov	District 3 Hydraulics
Byron Pierce	Maintenance Stormwater Coordinator	(530) 741-5364	Byron.g.pierce@dot.ca.gov	District 3
Mike F. Myers	Maintenance Stormwater Crew Supervisor	(530) 741-5320	Mike.f.myers@dot.ca.gov	Sutter-Sierra Area
Paul Thornton	Maintenance Stormwater Crew Supervisor	(916) 641-1079	Paul.e.thornton@dot.ca.gov	Sunrise Area

Table 2-1: District 3 Stormwater Personnel and Responsibilities

Staff Name	Title	Phone No.	E-mail	Responsibility
Mohammad Asghari	Encroachment Permits Stormwater Coordinator	(530) 634-7603	Mohammad.asghari@dot.ca.gov	District 3
Steve Harvey, Acting	Chief, North Region Construction	(530) 218-8963	Steve.harvey@dot.ca.gov	North Region (Districts 1, 2, 3)
Dusty Giffin	Construction Coordinator	(916) 825-5357	Dusty.giffin@dot.ca.gov	District 3
Roberto Cardenas	Demolition Coordinator	(530) 741-4069	Roberto.cardenas@dot.ca.gov	Demolition, District 3
Deanna Shoopman	Chief, Public Information	(530) 741-4572	Deanna.shoopman@dot.ca.gov	District 3 Public Information

Table 2-2 lists individuals authorized to sign the documents, reports, and other information submitted by the District to either the SWRCB or the RWQCB(s). These individuals/positions may delegate authorization to their staff to sign various documents and reports required for implementation of the Stormwater Program. It also includes delegation of signatory authority for key Conformed NPDES Permit and SWMP required documents.

Table 2-2: District 3 Signatory Authority for Key Documents

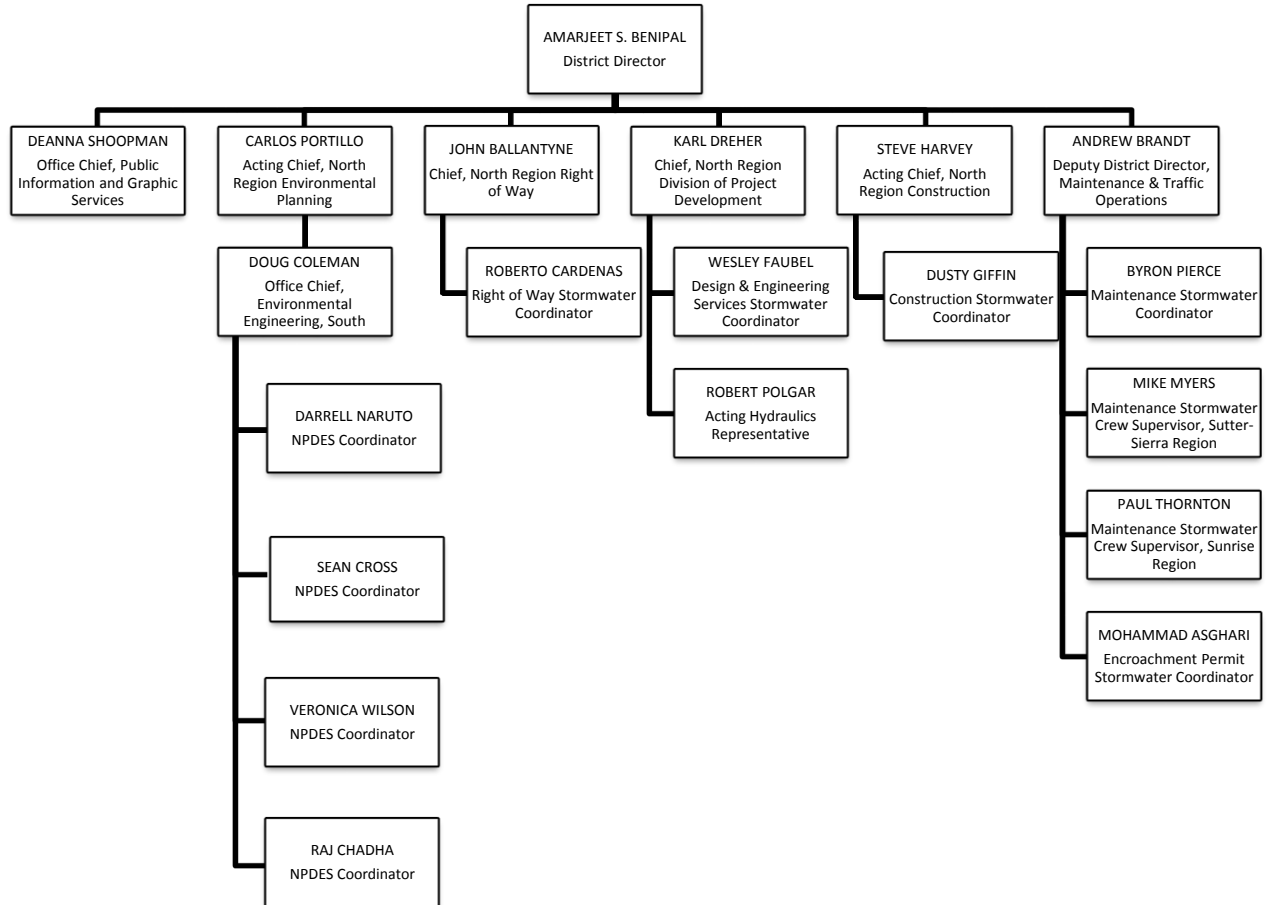
Position or Individual	Phone No.	E-mail	Documents Authorized for Signatures
District Director	(530) 741-4233	Amarjeet.benipal@dot.ca.gov	All District Documents, Legally Responsible Person (LRP – SMARTS)
Deputy District Director, Construction	(530) 218-8963	Steve.harvey@dot.ca.gov	All District Documents
Chief, North Region Environmental Planning	(530) 741-5461	Carlos.portillo@dot.ca.gov	All District Documents
Deputy District Director, Maintenance & Traffic Operations	(530) 741-4318	Andrew.brandt@dot.ca.gov	All District Documents
Chief, North Region Division of Project Development	(530) 741-4168	Karl.Dreher@dot.ca.gov	All District Documents
Chief, North Region Right of Way	(530) 741-4499	John.I.ballantyne@dot.ca.gov	All District Documents
Chief, Office of Environmental Engineering, South	(530) 741-4539	Douglas.coleman@dot.ca.gov	All District Documents except District Work Plan. Notice of Soil Reuse with Aerially Deposited Lead (ADL)
Construction Coordinator	(916) 825-5357	Dusty.giffin@dot.ca.gov	SWPPP, Notice of Intent (NOI), Notice of Termination (NOT), Notice and Report of Non-Compliance, Discharge or threat of Discharge Notification, Incident Report Form
Construction Engineers and Resident Engineers	–	Various	Notice and Report of Non-Compliance, Discharge or Threat of Discharge Notification, Report of Illegal Connection/Illicit Discharge (IC/ID), Incident Report Form

Table 2-2: District 3 Signatory Authority for Key Documents

Position or Individual	Phone No.	E-mail	Documents Authorized for Signatures
Encroachment Permits Stormwater Coordinator	(530) 634-7603	Mohammad.asghari@dot.ca.gov	SWPPPs, NOI/NOT, Notice and Report of Non-Compliance, Discharge or Threat of Discharge Notification, and Report of IC/ID, Incident Report Form
Maintenance Managers, Superintendents, Supervisors and HazMat Manager	–	Various	SWPPPs, Notice and Report of Non-Compliance, Discharge or Threat of Discharge Notification, NOI/NOT, Incident Report Form
Maintenance Stormwater Coordinator	(530) 741-5364	Byron.g.pierce@dot.ca.gov	SWPPPs, NOI/NOT, Notice and Report of Non-Compliance, Discharge or Threat of Discharge Notification, and Report of IC/ID, Incident Report Form
Facility Supervisor	–	Various	Facility Pollution Prevention Plans (FPPP)

Figure 2-1 shows an organizational chart describing key persons with responsibilities for stormwater operations within the District.

Figure 2-1: District 3 Organizational Chart



This page was intentionally left blank.

3 District Facilities and Water Bodies

Section 3 of the DWP identifies maintenance stations (including crew functions and street addresses), vista points, commercial vehicle enforcement areas, roadside rest areas, park and ride facilities, toll road and bridge plazas, equipment shops, and other Caltrans facilities. Facility Pollution Prevention Plans (FPPPs) are prepared and implemented at Maintenance facilities within the District's boundaries, such as maintenance stations, material storage facilities, and equipment shops. To comply with Department of Homeland Security policy, the table and map identifying these facilities is not available to the public. For more information, contact Caltrans' Office of Emergency Management or Division of Environmental Analysis.

This page was intentionally left blank.

4 Drinking Water Reservoirs and Recharge Facilities

Section 4 of the DWP describes and identifies the high-risk areas, which are locations where spills or other releases from District-owned rights-of-way, roadways, or facilities may discharge directly to municipal or domestic water supply reservoirs or ground water percolation facilities. Projects that potentially drain to these high-risk areas consider project features that enhance spill response.

Drinking water reservoirs and recharge facilities are areas such as locations where spills from District-owned ROWs or facilities can discharge directly to municipal or domestic water supply reservoirs or ground water percolation facilities. To generate the list of municipal, domestic water supply reservoirs, and ground water percolation facilities, the District first contacted known public and private water supply providers. From the information received, the District determined which facilities were susceptible to a direct spill from a District activity or facility. This determination was based on proximity between the water body and the District's facility, use characteristics of the facility, and the probable spill response time.

When planning projects within these defined areas, District 3 considers project design features for aiding in the prevention of accidental spills that could impact the area; these features are typically commensurate with safety improvements for reducing vehicle accidents. Examples of these features may include, but are not limited to, median barrier, guardrail, signalization, and vehicle restrictions. Features considered for improving spill response time typically include elongated drainage paths, call boxes, signage, or video surveillance.

A list of drinking water reservoirs and recharge facilities within District 3 is presented in Table 4-1.

Table 4-1: District 3 Drinking Water Reservoirs and Recharge Facilities

Road Segment/ Facility	County	Regional Board	Drinking Water Reservoir or Recharge Facility Area	Description	Comments
70 / 30.0	Butte	5	Lime Saddle Treatment Plant	Water for Del Oro Water Company – Lime Saddle Marina	1.5 miles to facility
162 / 21.3	Butte	5	Lake Oroville Spillway	Water for CSP Lake Oroville – Spillway	2.0 miles to facility
50 / 3.4	El Dorado	5	Bass Lake Water Treatment Plant	Water for El Dorado ID – Main	1.8 miles to facility
50 / 29.5	El Dorado	5	Reservoir 01 Water Treatment Plant	Water for El Dorado ID – Main	0.3 mile to facility
193 / 5.9	El Dorado	5	Auburn Lake Trails	Water for Georgetown Divide PUD	0.1 mile to facility
80 / 2.37	Nevada	5	Lake Serena Treatment Plant	Water for Sierra Lakes County Water District	2.1 miles to facility
80 / 6.77	Nevada	6	Lake Angela	Water for Donner Summit Public Utility District	1.3 miles to facility
80 / 12.4	Nevada	6	Donner Lake Water Treatment Plant	Water to Donner Lake Water Company	0.2 mile to facility
28 / 7.24	Placer	6	Lake Tahoe Intake	Water for Agate Bay Water Company	0.0 mile to facility
80 / 22.2	Placer	6	Bowman Water Treatment Plant	Water for Placer CWA – Auburn/Bowman	0.5 mile to facility
16 / 19.5	Sacramento	5	Consumnes River (Lake Chesbro)	Water for Rancho Murieta CSD	2.3 miles to facility
49 / 33.3	Sierra	5	Sardine Lake	Water for Sardine Lake Resort	1.0 mile to facility

This page was intentionally left blank.

5 Slopes Prone to Erosion

Section 5 of the DWP identifies the road segments within District 3 that have slopes which are prone to erosion and sediment discharge. The road segments that are located in sensitive watersheds, or where there is an existing or potential threat to water quality, will be prioritized for implementing appropriate controls to the maximum extent practicable. In each Annual Report, the status of stabilization activities where applicable will be reported. Table 5-1 is District 3’s inventory of vulnerable road segments where erosion occurs and stabilization may be required, or where rock cut slopes are located and rock falls have occurred.

District 3 maintenance crews continually perform activities to prevent encroachment of slopes onto the travel way.

Table 5-1: District 3 Inventory of Road Segments Prone to Erosion

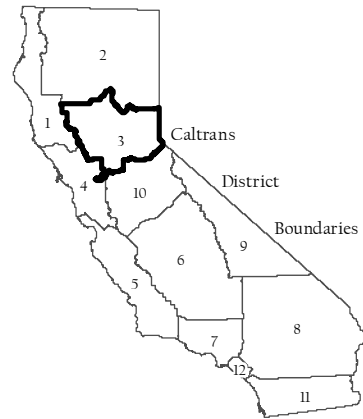
Road Segment	County	Regional Board	Watershed	Scheduled Stabilization Date
37.001-38.995	BUT-70	Central Valley	Feather River	TBD
18.991-30.991	BUT-162	Central Valley	Dry Creek	TBD
7.292-7.493	BUT-191	Central Valley	Chico Creek	TBD
1.0-2.0	COL-20	Central Valley	Bear Creek	TBD
9.372-40.746	SIE-49	Central Valley	Yuba River	TBD
1.3-1.7	YOL-16	Central Valley	Cache Creek	TBD
3.1-3.3	YOL-16	Central Valley	Cache Creek	TBD
4.2-4.3	YOL-16	Central Valley	Cache Creek	TBD
5.0-6.0	YOL-16	Central Valley	Cache Creek	TBD

Figure 5-1 is a map showing California State Highway System areas that required maintenance within District 3 in 2016, including rock cut slopes, landslides, and moderate soil erosion.

This page was intentionally left blank.

Figure 5-1: District 3

California State Highway System 2016 Areas Prone to Erosion



Legend

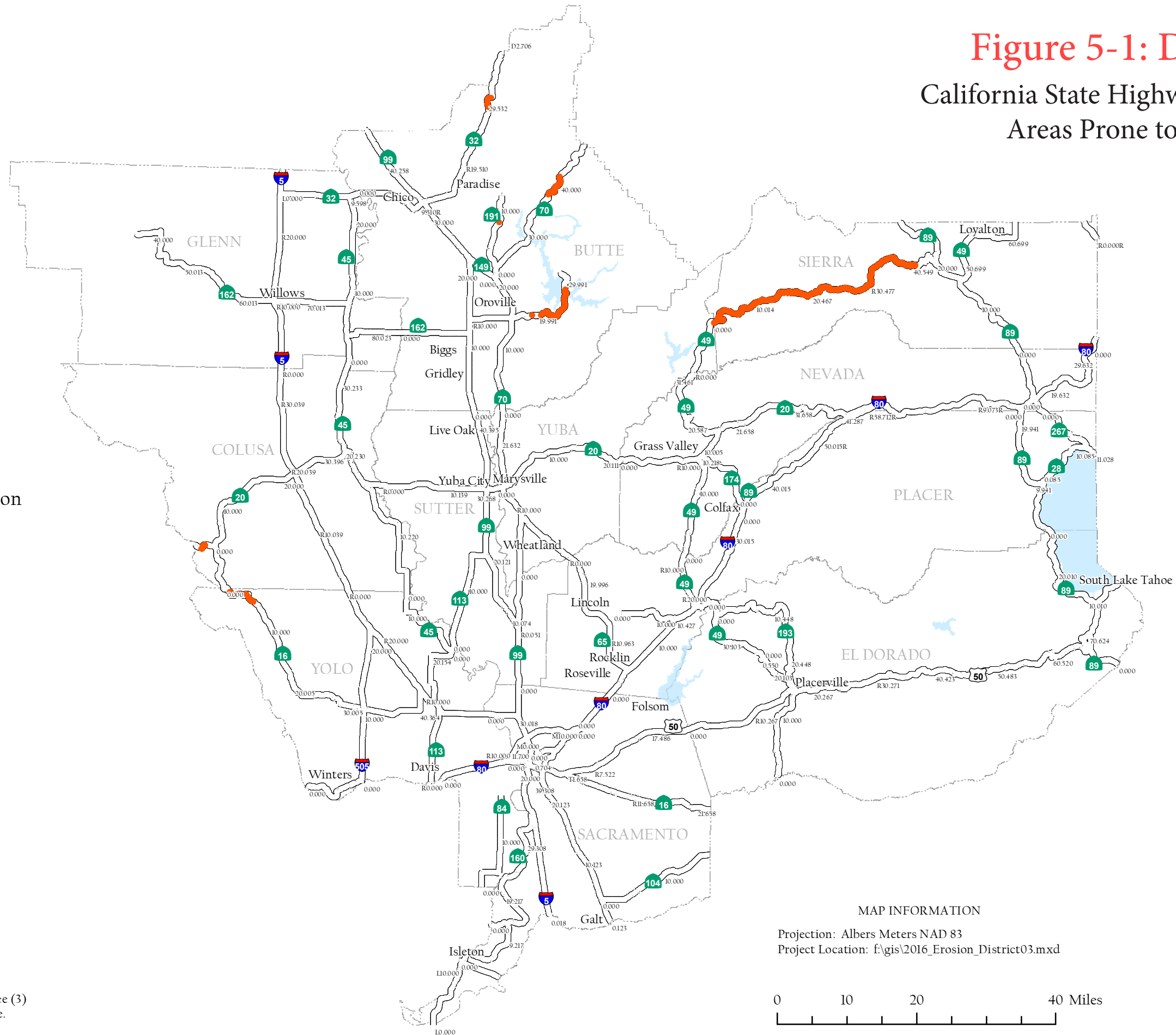
- State Highway
- 3 Yr. Consecutive Erosion
- Water Feature
- County Boundary

Areas Prone to Erosion

DIST	CO	RTE	PM
3	BUT	32	31/74.324
3	BUT	70	40.993/74.324
3	BUT	162	19.083/20.45
3	BUT	162	27.85/36.995
3	BUT	191	7.307/19.01
3	COL	20	R1.0/R2.0
3	COL	20	2.0/5.0
3	SIE	49	9.372/41.2
3	YOL	16	1.3/8.0
3	YOL	16	5.0/6.0

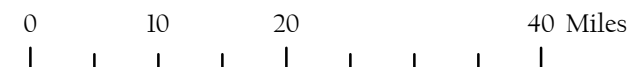
NOTE:

Map indicates locations of Major/Minor storm damage repair activities conducted on three (3) consecutive years by the Division of Maintenance. Erosion data obtained from IMMS.



MAP INFORMATION

Projection: Albers Meters NAD 83
Project Location: f:\gis\2016_Erosion_District03.mxd



State of California
Department of Transportation
Division of Maintenance GIS
July 29, 2016

This page was intentionally left blank.

6 Implementation

Section 6 of the DWP identifies the specific projects in which work is planned during the fiscal year within the Project Approval/Environmental Document (PA/ED), Plans, Specifications, and Estimates (PS&E), and Construction development phases. The anticipated schedule of construction and maintenance projects is subject to change. These projects are limited to those meeting any of the following criteria:

1. All projects that require soil disturbing activities
2. Adjacent to a Drinking Water or Ground Water Recharge Facility, as described in Section 4 of the DWP
3. A supplemental environmental project
4. Additional projects per agreement between the District and local RWQCB

Projects listed in Table 6-1 include (where applicable):

1. Location (county, route and post mile limits)
2. Project number (expense authorization)
3. Basic Project Description
4. Disturbed soil area
5. Presence of receiving waters within or adjacent to project limits, with special designation for 303(d) listed water bodies (adopted)
6. Drinking Water Reservoir or Ground Water Recharge Facility within or adjacent to project (as identified in Section 4 of the DWP)
7. Projected milestone dates of PA/ED, PS&E, begin Construction, and end Construction
8. Description of Construction Controls
9. Post-Construction Treatment Controls (types and quantities)
10. Dredge and fill (CWA-401) activities within the project
11. Other Regional Water Control Board Permits Required
12. Potential and Actual Impacts of Project's Discharge
13. Area of New Impervious Surface
14. Percentage of New Impervious Surface to Existing Impervious Surface

The updated lists of projects meeting these criteria will also be provided to the RWQCB annually on October 1st. Furthermore, this section identifies planned maintenance projects with soil disturbance. Information associated with the project includes location, affected water body, and area of disturbance. In addition, this section also describes the planned stormwater monitoring activities within the District; however, these activities may be conducted jointly with other Districts and HQ. Consequently, the information contained in a DWP may be repeated in another DWP.

This page was intentionally left blank.

Table 6-1: District 3 Anticipated Project Development and Construction Schedule

No.	EA	Project Location					Project Description ^{2,3}	Water Bodies Within or Adjacent to Project Limits ⁴	Dredge and Fill Activities (Y/N/NA) ⁵	Other Regional Water Board Permits Required ⁶	Potential and Actual Impacts of Project's Discharge ⁷	Disturbed Soil Area (acres)	Area of New Impervious Surface (acres)	Percentage of New Impervious Surface to Existing Impervious Surface	Description of Construction Controls (SWPPP/WPCP/TBD) ⁸	Post-Construction Control Type, Quantity ⁹	Anticipated Project Delivery Schedule		Construction Period	
		Co.	Route	Begin PM	End PM	RB ¹											PA&ED Date	PS&E Date	Start Date	End Date
1	03-0A570	Yuba	020	13.3	17.8	5	Rehab, Realign, and add shoulders	DRY CREEK/(YUBA RIVER)	Y	-	-	52.3	8.5	47.8%	SWPPP	C	15-Feb-17	01-Apr-18	01-Jun-18	01-Sep-21
2	03-0A870	Yolo	016	0	19.3	5	CPM	TBD	N	-	-	0.0	0.0	0.0%	TBD	C	15-Dec-17	01-Aug-18	01-Apr-19	01-Oct-19
3	03-0A960	Yolo	045	0	12.9	5	CAPM	TBD	N	-	-	0.0	0.0	0.0%	TBD	C	15-Dec-17	01-Aug-18	01-Apr-19	01-Oct-19
4	03-0C472	Yolo	016	20.5	31.6	5	Add turn pockets, shift alignment, straighten curve	TBD	N	-	-	0.0	0.0	0.0%	TBD	C	24-Jun-15	07-Mar-17	15-Aug-17	15-Nov-19
5	03-0E960	El Dorado	049	11.7	12.4	5	REALIGN AND REDESIGNATE ROADWAY	TBD	N	-	-	-	0.0	0.0%	TBD	C	21-Jun-13	01-Nov-16	01-Sep-17	01-Oct-18
6	03-0F100	Nevada	VAR	0	0		Repair Sand House	TBD	N	-	-	0.0	0.0	0.0%	TBD	C	07-Mar-17	03-Oct-17	01-Sep-18	01-Oct-19
7	03-0F250	Yolo	080	11.3	11.3	5	Replace Bearing Pads-2 Structures, and Adjust/Repl	Sacramento	N	-	-	6.0	0.0	0.0%	SWPPP	E	01-Sep-18	01-Mar-20	01-Oct-20	01-Nov-22
8	03-0F280	Sacramento	099	7.4	8.4	5	Replace nonstandard bridge rail on both sides of	COSUMNES RIVER, LOWER (BELOW MICHIGAN BAR; PARTLY IN DELTA WATERWAYS, EASTERN PORTION) COSUMNES RIVER OVERFLOW	N	-	-	10.5	0.3	30.0%	SWPPP	E	25-Feb-15	01-Nov-17	01-Jul-18	01-May-20
9	03-0F290	Butte	099	15.41	15.41	5	Replace nonstandard bridge rail	TBD	N	-	-	0.0	0.0	0.0%	TBD	E	01-Feb-18	15-Jun-19	15-Mar-20	01-Nov-21
10	03-0F310	El Dorado	049	23.6	24.5	5	Replace Bridge	((SOUTH FORK AMERICAN RIVER (BELOW SLAB CREEK RESERVOIR TO FOLSOM LAKE))	Y	-	-	5.0	2.0	44.4%	SWPPP	BS,2	10-Mar-15	09-May-16	12-Dec-16	12-Jan-19
11	03-0F352	Placer	065	5.9	5.9	5	Install Ramp Meters at Galleria Blvd	TBD	NA	-	-	0.0	0.0	0.0%	TBD	C	15-Aug-16	31-Jan-17	02-Oct-17	01-Mar-20
12	03-0F380	Colusa	005	2.3	13.8	5	Raise structure or lower roadway profile	TBD	N	-	-	0.0	0.0	0.0%	TBD	C	01-Aug-18	15-Jul-19	01-Apr-20	01-Nov-21
13	03-0G100	Sierra	089	19.9	29.6	5	Replace AC Surfacing	ND	N	-	-	-	-	-	WPCP	E	27-Aug-14	28-Oct-14	26-Nov-15	01-Jan-18
14	03-0G120	Sutter	020	0	4.2	5	Near Sutter from Colusa County Line to the Sutter	TBD	N	-	-	0.0	0.0	0.0%	TBD	C	01-Jul-18	01-Nov-18	01-Jun-19	01-Nov-20
15	03-0G320	Nevada	VAR	0	0	5	Scour mitigation	(SOUTH YUBA RIVER)	N	-	-	0.0	0.0	0.0%	TBD	C	24-May-16	01-Aug-16	01-Mar-17	01-Oct-18
16	03-0G340	Nevada	080	12.5	21.2	6	Bonded wearing course - Gap Graded	TBD	N	-	-	0.0	0.0	0.0%	TBD	C	08-Apr-16	-	-	01-Nov-18
17	03-0G420	Colusa	045	28.8	33.9	5	Cold In Place Recycle	TBD	N	-	-	0.0	0.0	0.0%	TBD	C	01-Mar-17	-	-	01-Dec-18
18	03-0G450	Placer	089	9	12.5	6	Cold Plane Asphalt and HMA Overlay	TBD	N	-	-	-	-	-	WPCP	-	31-Aug-15	-	15-Apr-16	01-Dec-17
19	03-0G480	Yolo	VAR	0	0	5	Place bridge deck preventative maintenance and pol	TBD	NA	-	-	0.0	0.0	0.0%	TBD	C	04-Apr-16	-	01-Feb-17	01-Nov-18

¹ Regional Board

² Supplemental Environmental Projects designated as "SEP."

³ Projects adjacent to Drinking Water Reservoirs or Ground Water Recharge Facilities are noted (DW) and (GW), respectively.

⁴ Water bodies with designation for 303(d) designation are noted in parentheses.

⁵ If yes, a 401 permit will be required for this project. NA = Not Available at this time.

⁶ Regional Water Board Permits required other than Construction General Permit and Clean Water Act Section 401 water quality certification, such as Waiver of Discharge Requirements, Dewatering Permits, Bridge Painting WDRs, etc.

⁷ This information may come from the Water Quality Assessment Report prepared for each project, a Water Quality Technical Memorandum, or other document that evaluates the water quality impacts of a project.

⁸ A description of the Construction Controls is available in the project's Storm Water Pollution Prevention Plan (SWPPP), Water Pollution Control Plan (WPCP), or is To Be Determined (TBD) if the Disturbed Soil Area is unavailable.

⁹ Treatment Control Status identified by: device type/number of devices, exempt ("E"), or under consideration ("C"). See Treatment Control Status Legend below for device type abbreviations.

Table 6-1: District 3 Anticipated Project Development and Construction Schedule

No.	EA	Project Location					Project Description ^{2,3}	Water Bodies Within or Adjacent to Project Limits ⁴	Dredge and Fill Activities (Y/N/NA) ⁵	Other Regional Water Board Permits Required ⁶	Potential and Actual Impacts of Project's Discharge ⁷	Disturbed Soil Area (acres)	Area of New Impervious Surface (acres)	Percentage of New Impervious Surface to Existing Impervious Surface	Description of Construction Controls (SWPPP/WPCP/TBD) ⁸	Post-Construction Treatment Control Type, Quantity ⁹	Anticipated Project Delivery Schedule		Construction Period	
		Co.	Route	Begin PM	End PM	RB ¹											PA&ED Date	PS&E Date	Start Date	End Date
20	03-0G500	Yolo	050	2.7	2.8	5	Spot blast clean and prep, then paint	TBD	NA	-	-	0.0	0.0	0.0%	WPCP	E	08-Feb-16	-	-	01-Oct-18
21	03-0G510	D03-Various	VAR	0	0	5	Place 20mm polyester concrete overlay and repair b	TBD	NA	-	-	0.0	0.0	0.0%	TBD	C	03-May-16	-	-	01-Nov-18
22	03-0G520	D03-Various	VAR	0	0	5	Bridge deck preventative maintenance polyester & m	TBD	NA	-	-	0.0	0.0	0.0%	TBD	C	08-Apr-16	-	-	01-Nov-18
23	03-0G530	Butte	070	17	19.8	5	Mill and Replace with RHMA Overlay - Open Graded	TBD	NA	-	-	0.0	0.0	0.0%	TBD	C	24-Mar-16	-	01-May-17	01-Nov-18
24	03-0G560	Sierra	049	0	16.9	5	RHMA Overlay	ND	N	-	-	0.0	0.0	0.0%	WPCP	E	01-Dec-16	-	01-May-17	01-Nov-18
25	03-0G570	Sierra	089	19.9	29.6	5	RHMA Overlay	ND	N	-	-	0.0	0.0	0.0%	WPCP	E	01-Jun-16	-	01-Apr-17	01-Nov-18
26	03-0G600	D03-Various	VAR	0	0	5	Digouts	TBD	NA	-	-	0.0	0.0	0.0%	WPCP	E	18-Mar-16	-	01-Mar-17	01-Oct-18
27	03-0G610	Yolo	084	10.9	13.3	5	CIR w/Overlay	TBD	NA	-	-	0.0	0.0	0.0%	TBD	C	01-Jul-16	-	01-Apr-17	01-Nov-18
28	03-0G620	Glenn	162	81.6	82.1	5	Paint two bridges	TBD	NA	-	-	0.0	0.0	0.0%	TBD	E	01-Jun-16	-	-	01-Nov-18
29	03-0G660	D03-Various	VAR	0	0	5	Minor paving at 21 Park and Ride lots and 1 SRRA	TBD	NA	-	-	0.0	0.0	0.0%	TBD	C	15-Apr-16	-	01-Oct-18	01-Nov-18
30	03-0G700	Yolo	128	0.9	9.9	5	Replace Metal Beam Guard Railing	TBD	NA	-	-	0.0	0.0	0.0%	TBD	C	17-May-16	-	01-Mar-17	01-Oct-18
31	03-0G710	Yolo	VAR	0	0	5	Slab replacement	TBD	NA	-	-	0.0	0.0	0.0%	TBD	C	01-Jul-16	-	30-Nov-17	01-Nov-18
32	03-0H040	Yuba	049	5.9	6	5	Repair Landslide With Engineered Geotechnical Solution	TBD	N	-	-	0.0	0.0	0.0%	TBD	C	02-May-17	02-Oct-17	02-Apr-19	01-Oct-19
33	03-0H050	Sacramento	005	23.6	24.7	5	Construct New Bridge Across Sacramento River	TBD	N	-	-	0.0	0.0	0.0%	TBD	C	01-Dec-16	01-Aug-18	01-Jun-19	01-Dec-21
34	03-0H080	Sacramento	050	0.6	5.3	5	Rehabilitate Pavement	TBD	N	-	-	0.0	0.0	0.0%	TBD	C	01-Feb-18	01-Aug-18	01-Apr-19	01-Dec-20
35	03-0H090	Yolo	084	0	15.68	5	CIR W/HMA Overlay	TBD	N	-	-	0.0	0.0	0.0%	TBD	C	01-Feb-18	01-Oct-18	01-May-19	01-Dec-21
36	03-0H100	Sacramento	005	14.9	24.9	5	Roadway Rehabilitation	TBD	N	-	-	0.0	0.0	0.0%	TBD	C	15-Dec-16	15-Feb-17	26-Jan-18	15-Dec-23
37	03-0H160	Yuba	070	15.07	16.5	5	Road Rehabilitation	TBD	N	-	-	0.0	0.0	0.0%	TBD	C	01-Aug-17	01-Jun-18	01-Feb-19	01-Nov-21
38	03-0H220	Nevada	049	7.5	14.4	5	Culvert Rehabilitation	Various	N	-	-	0.0	0.0	0.0%	TBD	E	01-Sep-17	01-Sep-18	01-Apr-19	01-Dec-19
39	03-0H240	Nevada	020	29.7	30.9	5	Widen shoulders, improve Superelevation	FISH CREEK/NORTH FORK DEER CREEK	Y	-	-	16.5	5.3	129.3%	SWPPP	C	01-Feb-18	01-Oct-19	01-Jun-20	01-Dec-21
40	03-0H260	Placer	065	5	6	5	Widen east side of East Roseville Viaduct (BR 19-1)	TBD	N	-	-	0.0	0.0	0.0%	TBD	C	30-Jun-16	31-Jan-17	02-Oct-17	01-Mar-20
41	03-0H270	Yolo	VAR	0	0	5	Modify Signal Controllers, Install Interconnect Ca	TBD	N	-	-	0.0	0.0	0.0%	TBD	E	01-Nov-16	01-Feb-18	01-Oct-18	01-Oct-19
42	03-0H330	Butte	099	13.25	45.92	5	Bridge Rail Replacement	TBD	N	-	-	0.0	0.0	0.0%	TBD	C	01-Feb-18	15-Jul-19	01-Apr-20	01-Jun-21
43	03-0H340	Sacramento	099	22.59	22.6	5	Replace Bridge Deck on Sac 99 - BR 24-0154	EL DORADO IRRIGATION DISTRICT MAIN CANAL, NORTH FORK WEBER CREEK	N	-	-	0.1	0.3	100.0%	WPCP	E	01-Aug-17	01-Jun-19	01-Feb-20	15-Dec-20
44	03-0H360	D03-Various	080	0	0	5	Interchange Improvements	TBD	N	-	-	0.0	0.0	0.0%	TBD	C	01-Aug-18	01-Aug-19	01-Apr-20	01-Oct-20

Table 6-1: District 3 Anticipated Project Development and Construction Schedule

No.	EA	Project Location					Project Description ^{2,3}	Water Bodies Within or Adjacent to Project Limits ⁴	Dredge and Fill Activities (Y/N/NA) ⁵	Other Regional Water Board Permits Required ⁶	Potential and Actual Impacts of Project's Discharge ⁷	Disturbed Soil Area (acres)	Area of New Impervious Surface (acres)	Percentage of New Impervious Surface to Existing Impervious Surface	Description of Construction Controls (SWPPP/WPCP/TBD) ⁸	Post-Construction Treatment Control Type, Quantity ⁹	Anticipated Project Delivery Schedule		Construction Period	
		Co.	Route	Begin PM	End PM	RB ¹											PA&ED Date	PS&E Date	Start Date	End Date
45	03-0H370	Yuba	065	0.52	1.77	5	Remove and replace HMA - Install/upgrade ADA curb	TBD	N	-	-	0.0	0.0	0.0%	TBD	C	01-Aug-17	01-Aug-19	01-Apr-20	01-Oct-20
46	03-0H400	D03-Various	VAR	0	0		Upgrading EMS signs to LED. Installation of Fiber	TBD	N	-	-	0.0	0.0	0.0%	TBD	E	01-Jan-19	01-Aug-19	01-Apr-20	01-Apr-21
47	03-0H410	D03-Various	VAR	0	0		Repair existing AVC and install new AVC's	TBD	N	-	-	0.0	0.0	0.0%	TBD	C	01-Jan-18	01-Aug-18	01-Mar-19	01-Sep-19
48	03-0H420	D03-Various	VAR	0	0		Repair existing continuous count stations, install	TBD	N	-	-	0.0	0.0	0.0%	TBD	E	01-Jan-19	01-Sep-19	01-Mar-20	01-Sep-20
49	03-0H460	Placer	080	2.9	2.9	5	Widen onramp and structure over Miners Ravine	MINER RAVINE	N	-	-	2.5	2.9	152.6%	SWPPP	C	15-Dec-16	01-Sep-18	15-Apr-19	15-Oct-19
50	03-0H470	Sacramento	080	1.16	11.31	5	Rehab Pavement (HMA & PCC)	TBD	N	-	-	0.0	0.0	0.0%	TBD	E	03-Oct-17	30-Nov-18	15-Jul-19	15-Oct-20
51	03-0H480	Sacramento	099	0	0	5	RHMA Overlay	TBD	N	-	-	0.0	0.0	0.0%	TBD	C	01-Jun-17	20-Aug-18	15-Apr-19	15-Apr-20
52	03-0H490	D03-Various	VAR	0	0		Replace signs, sign lighting	TBD	N	-	-	0.0	0.0	0.0%	TBD	E	01-Jan-17	15-Aug-17	15-Mar-18	01-May-19
53	03-0H500	El Dorado	050	0	80.44		Upgrade MBGR, add concrete barrier to transitions (DW)	TBD	N	-	-	0.0	0.0	0.0%	TBD	C	01-Feb-17	01-Aug-18	01-Apr-19	01-Dec-21
54	03-0H510	Yuba	070	11	13.6	5	Install new concrete barrier correct drainage	TBD	N	-	-	0.0	0.0	0.0%	TBD	C	01-Aug-17	15-Aug-18	01-Apr-19	01-Dec-19
55	03-0H520	El Dorado	050	0	80.4		Advance Warning & ITS (DW)	TBD	N	-	-	0.0	0.0	0.0%	TBD	E	01-Aug-17	01-Dec-19	01-Sep-20	01-Dec-21
56	03-0H530	Sacramento	080	15.2	17	5	Antelope Truck Scales	TBD	N	-	-	0.0	0.0	0.0%	TBD	C	01-Oct-17	01-Aug-18	01-Apr-19	01-Jul-19
57	03-0H540	D03-Various	080	0	0		Install Fiber Optic Cables	TBD	N	-	-	0.0	0.0	0.0%	TBD	C	01-Jan-18	01-Aug-19	01-Mar-20	01-Sep-20
58	03-0H560	Placer	065	5.7	5.7	5	SR 65 Ramps project	(PLEASANT GROVE CREEK)	Y	-	-	12.4	2.7	35.6%	SWPPP	C	30-Jun-16	31-Jan-17	02-Oct-17	01-Mar-20
59	03-0H570	Sacramento	050	10.84	10.99	5	Modify Ramp Intersections, Lengthen Turn Pocket	Lower American River	N	-	-	4.6	0.9	10.8%	SWPPP	C	30-Sep-16	-	01-Jul-17	02-Jan-19
60	03-0H580	Sacramento	050	3.5	3.5	5	Reconstruct, Widen, Signalize Off-ramp Intersection	TBD	N	-	-	0.0	0.0	0.0%	TBD	C	11-Nov-16	06-Jun-18	02-Jan-19	10-Oct-19
61	03-0H630	Nevada	174	6.83	6.83	5	Install Intersection Lighting	TBD	NA	-	-	0.0	0.0	0.0%	TBD	E	01-Feb-17	01-Sep-17	01-Mar-18	01-Nov-18
62	03-0H650	Colusa	020	34.8	36.5	5	Shoulder widening & Clear Recovery	TBD	NA	-	-	6.3	0.0	0.0%	TBD	C	02-Jul-20	01-Nov-21	01-Jul-22	15-Jan-24
63	03-0H660	Nevada	020	0	0	5	Construction of Left Turn Pockets	TBD	NA	-	-	0.0	0.0	0.0%	TBD	C	01-Feb-20	01-Feb-21	01-Aug-21	01-Dec-22
64	03-0H670	Sacramento	099	12.7	24.3	5	Installation of Fiber Optic Cable	TBD	NA	-	-	0.0	0.0	0.0%	TBD	C	01-Oct-20	01-Sep-21	01-May-22	01-Nov-22
65	03-0H680	D03-Various	VAR	0	0		Replacement of ADIEM Crash Cushion and Sand Barrel	TBD	NA	-	-	0.0	0.0	0.0%	TBD	E	01-Jul-19	15-Sep-20	01-Apr-21	01-Oct-22
66	03-0H690	D03-Various	VAR	0	0		Construct Turnouts	TBD	NA	-	-	0.0	0.0	0.0%	TBD	C	01-Jul-19	01-Aug-20	01-Apr-21	01-Dec-22
67	03-0H720	Placer	080	0	69.77	5	Upgrade MBGR to current standards	TBD	NA	-	-	0.0	0.0	0.0%	TBD	E	15-Aug-19	15-Jun-20	01-Mar-21	15-Dec-21
68	03-0H810	Sacramento	080	9.401	9.452	5	Install Chain Link Fence	TBD	NA	-	-	0.0	0.0	0.0%	TBD	E	01-Feb-17	01-Sep-17	01-Mar-18	01-Nov-18
69	03-0H820	Sierra	089	25.2	25.6	5	Install Under drains	TBD	NA	-	-	0.0	0.0	0.0%	TBD	E	01-Feb-17	01-Sep-17	01-Mar-18	01-Nov-18

Table 6-1: District 3 Anticipated Project Development and Construction Schedule

No.	EA	Project Location					Project Description ^{2,3}	Water Bodies Within or Adjacent to Project Limits ⁴	Dredge and Fill Activities (Y/N/NA) ⁵	Other Regional Water Board Permits Required ⁶	Potential and Actual Impacts of Project's Discharge ⁷	Disturbed Soil Area (acres)	Area of New Impervious Surface (acres)	Percentage of New Impervious Surface to Existing Impervious Surface	Description of Construction Controls (SWPPP/WPCP/TBD) ⁸	Post-Construction Control Type, Quantity ⁹	Anticipated Project Delivery Schedule		Construction Period	
		Co.	Route	Begin PM	End PM	RB ¹											PA&ED Date	PS&E Date	Start Date	End Date
70	03-0H830	El Dorado	049	10.7	11.239	5	Widen Shoulders to 8ft to Provide Pedestrian/Bicycle	TBD	NA	-	-	0.0	0.0	0.0%	TBD	C	01-Feb-18	01-Sep-18	01-Mar-19	01-Nov-19
71	03-0H840	Nevada	080	0.1	0.1	5	Replace metal bunker roof at the Kingvale Maintenance	TBD	NA	-	-	0.0	0.0	0.0%	TBD	E	01-Mar-18	-	01-Jan-19	01-Jan-20
72	03-0H850	El Dorado	050	15.82	18.83	5	Replacement of Signal Pole	TBD	NA	-	-	0.0	0.0	0.0%	TBD	E	01-Feb-17	01-Sep-17	01-Mar-18	01-Nov-18
73	03-0H860	D03-Various	VAR	0	0		Replacement of ADIEM Crash Cushions	TBD	NA	-	-	0.0	0.0	0.0%	TBD	E	01-Feb-17	01-Sep-17	01-Mar-18	01-Nov-18
74	03-0H880	D03-Various	050	0	0	5	Removal of Abandoned On-Ramps at Latrobe Rd	TBD	NA	-	-	0.0	0.0	0.0%	TBD	E	24-Jun-17		01-May-18	01-Oct-18
75	03-0H890	Sutter	020	13.4	13.6	5	Install Right Turn Pocket on WB Sut-20 to George W	TBD	NA	-	-	0.0	0.0	0.0%	TBD	C	15-Apr-17	15-Oct-17	01-May-18	01-Oct-18
76	03-0H900	El Dorado	050	48.95	48.95	5	Install New 24" HDPE Culvert	TBD	NA	-	-	0.0	0.0	0.0%	TBD	C	01-Jan-17	01-Nov-17	01-Jun-18	06-Jul-18
77	03-0H910	Yolo	016	25.67	38.56	5	Install Street Lighting at 3 Locations on YOL 16	TBD	NA	-	-	0.0	0.0	0.0%	TBD	E	15-May-17	01-Oct-17	01-Apr-18	01-Oct-18
78	03-0H920	Nevada	080	50.7	50.7	5	Repair and Paint Whitmore Maint Station	TBD	NA	-	-	0.0	0.0	0.0%	TBD	E	01-Mar-18	-	01-Jan-19	01-Jan-20
79	03-0H930	Sacramento	051	1.05	8.9	5	SR 51 Improvements	(AMERICAN RIVER, (NIMBUS DAM TO CONFLUENCE WITH SACRAMENTO RIVER))/(ARCADE CREEK)	N	-	-	82.0	41.0	35.3%	SWPPP	C	01-Nov-19	01-Jun-22	01-Apr-23	01-Apr-26
80	03-0H980	Yuba	020	2.61	2.94	5	Construct Turn Pockets and Acceleration lanes	TBD	NA	-	-	0.0	0.0	0.0%	TBD	C	01-May-17	15-Dec-17	01-Sep-18	17-Jul-19
81	03-1A810	Glenn	162	37.6	84.6	5	CIR with HMA Overlay	TBD	N	-	-	0.0	0.0	0.0%	TBD	C	15-Dec-18	01-Aug-19	01-Apr-20	01-Oct-21
82	03-1A820	Glenn	045	0	23.2	5	CAPM	TBD	N	-	-	0.0	0.0	0.0%	TBD	E	15-Dec-17	01-Aug-18	01-Apr-19	01-Oct-19
83	03-1A842	El Dorado	089	8.6	13.8	6	Environmental Improvement-Route 50 to Cascade Road	Truckee Marsh, Taylor Creek, (Tallac Creek)	Y	-	-	10.5	2.32	10.09%	SWPPP	TST, 42	02-Aug-11	-	10-Oct-14	01-Nov-16
84	03-1A920	Sutter	020	5	11.3	5	Sutter Bypass Widening & Rehab	(SUTTER BYPASS)/SNAKE RIVER/FARINGTON LATERAL/LITTLE BLUE CREEK/(WADSWORTH CANAL)	Y	-	-	58.0	6.0	18.8%	SWPPP	C	01-Aug-16	01-Feb-18	01-Sep-18	15-Nov-20
85	03-1E050	Placer	080	31.5	36.89	5	Culvert Rehabilitation	TBD	N	-	-	0.0	0.0	0.0%	TBD	E	01-Jun-17	15-Jun-19	05-Mar-20	05-Mar-21
86	03-1E060	Yuba	070	15.5	16.4	5	Replace Bridge	TBD	N	-	-	0.0	0.0	0.0%	TBD	C	01-Dec-16	01-Apr-18	01-Dec-18	01-Dec-20
87	03-1E090	Butte	162	26.8	29.9	5	Seismic Retrofit Installation of Hinge Restrainers	TBD	N	-	-	0.0	0.0	0.0%	TBD	C	15-Jan-18	01-May-20	02-Jan-21	01-Dec-23
88	03-1E270	Sacramento	050	12.5	15.8	5	CONSTRUCT NEW INTERCHANGE	Buffalo Creek	N	-	-	28.0	0.0	0.0%	SWPPP	C	13-Nov-15	01-Jul-19	01-Nov-19	01-Nov-22
89	03-1E330	El Dorado	050	79.8	80.4	6	DEVELOP PSR FOR MULTI-MODAL TRANSP & COMMUNITY EN	Lake Tahoe	Y	-	-	50.0	6.0	0.0%	SWPPP	BS,2 ID,1 D,1 TST,1 MF,1	01-Jun-17	-	01-Apr-19	01-Mar-22
90	03-1E760	Yuba	VAR	VAR	VAR	5	Marysville Operational Improvement	TBD	NA	-	-				TBD		01-Dec-05	15-May-16	01-Feb-17	01-Dec-17
91	03-1F170	Placer	065	6	12.8	5	Add Capacity via HOV or Hot lanes	TBD	N	-	-	0.0	0.0	0.0%	TBD	C	05-Jul-16	-	01-Nov-19	01-Nov-22
92	03-1F170	Placer	065	6	12.8	5	Construct HOV Lanes	Pleasant Grove Creek, Orchard Creek, Ingram Slough	Y	-	-	72.0	30.0	0.0%	SWPPP	C	05-Jul-16	-	01-Nov-19	01-Nov-22
93	03-1F190	Sacramento	050	2.6	3.8	5	Add Auxiliary Lane	Morrison Creek	N	-	-	2.3	0.1	0.0%	SWPPP	E	01-Feb-17	01-Feb-18	01-Oct-19	01-Oct-20

Table 6-1: District 3 Anticipated Project Development and Construction Schedule

No.	EA	Project Location					Project Description ^{2,3}	Water Bodies Within or Adjacent to Project Limits ⁴	Dredge and Fill Activities (Y/N/NA) ⁵	Other Regional Water Board Permits Required ⁶	Potential and Actual Impacts of Project's Discharge ⁷	Disturbed Soil Area (acres)	Area of New Impervious Surface (acres)	Percentage of New Impervious Surface to Existing Impervious Surface	Description of Construction Controls (SWPPP/WPCP/TBD) ⁸	Post-Construction Treatment Control Type, Quantity ⁹	Anticipated Project Delivery Schedule		Construction Period	
		Co.	Route	Begin PM	End PM	RB ¹											PA&ED Date	PS&E Date	Start Date	End Date
94	03-1F230	D03-Various	080	2.4	11.3	5	Widen Ramps and Install Ramp Meters	CRIPPLE CREEK/MAGPIE CREEK/(NATOMAS WAST MAIN DRAINAGE CANAL (AKA STEELHEAD CREEK, UPSTREAM OF CONFLUENCE WITH ARCADE CREEK))/(ARCADE CREEK)/EAST DRAINAGE CANAL/(SACRAMENTO RIVER (KNIGHTS LANDING TO THE DELTA))/(DELTA WATERWAYS(NORTHWESTERN PORTION))	N	-	-	12.5	3.0	65.2%	SWPPP	C	27-May-16	01-Apr-17	01-Nov-17	01-Oct-19
95	03-1F260	Sierra	089	0	2.3	6	Two Wildlife Crossings	-	-	-	-	-	-	SWPPP	-	26-Jun-13	12-Jun-14	11-Feb-16	30-Dec-16	
96	03-1F310	Sacramento	099	0	36.9	5	High Speed Rail Project	TBD	N	-	-	0.0	0.0	0.0%	TBD	C	01-Dec-22	-	-	-
97	03-1F400	Placer	080	35.1	38.3	5	Widening Eastbound Roadway	ROLLINS RESERVOIR	Y	-	-	27.8	7.2	51.8%	SWPPP	C	22-Apr-14	18-Jun-15	05-Apr-16	01-Nov-18
98	03-1F970	Sutter	099	27.6	32.7	5	Yuba City ITS and Operational Improv	Gilsizer Slough	N	-	-	-	-	-	TBD	E	04-Jun-15	20-May-16	30-Dec-16	01-Dec-17
99	03-1H000	El Dorado	193	6.5	11.1	5	Construct Three Turnouts for Slower Moving Vehicle	TBD	NA	-	-	0.0	0.0	0.0%	TBD	C	02-May-17	01-Oct-17	15-Jun-18	04-Dec-18
100	03-1H010	Nevada	080	28.3	28.7	6	Construct Rockfall Wire Mesh Drapery, Flatten Cut	(TRUCKEE RIVER)	Y	-	-	12.0	0.0	0.0%	SWPPP	C	01-Aug-19	15-Aug-20	01-Apr-21	01-Dec-21
101	03-1H040	El Dorado	050	0	7.5	5	Culvert Rehabilitation (DW)	TBD	NA	-	-	0.0	0.0	0.0%	TBD	E	02-Jan-20	01-Aug-21	01-Apr-22	01-Dec-24
102	03-1H050	Sacramento	050	0.59	3.12	5	Pave slopes, roadside paving, relocate facilities,	TBD	NA	-	-	0.0	0.0	0.0%	WPCP	E	01-Jul-19	01-Sep-20	01-May-21	01-Oct-21
103	03-1H100	Sacramento	VAR	0	0	5	Paint Steel Girders	TBD	NA	-	-	0.0	0.0	0.0%	TBD	E	01-Feb-20	01-Aug-21	01-Apr-22	01-Dec-24
104	03-1H110	Sacramento	099	7.9	8.4	5	Sub Scour Mitigation on 4 Bridges	TBD	NA	-	-	0.0	0.0	0.0%	TBD	C	01-Nov-19	01-Sep-21	01-May-22	01-Nov-23
105	03-1H120	Butte	070	28.22	28.22	5	Bridge Deck Rehab Polyester overlay-Remove old	TBD	NA	-	-	0.0	0.0	0.0%	TBD	E	01-Aug-19	15-Aug-21	15-Apr-22	01-Dec-23
106	03-1H130	Sacramento	012	0	0.4	5	Replace Elevators, Paint Towers	TBD	NA	-	-	0.0	0.0	0.0%	TBD	E	01-Jul-19	01-May-21	01-Feb-22	30-Mar-23
107	03-1H140	Butte	099	3.5	4.9	5	Road Rehabilitation	TBD	NA	-	-	0.0	0.0	0.0%	TBD	E	01-Aug-19	15-Aug-21	15-Apr-22	01-Dec-23
108	03-1H150	Sutter	099	39.4	40.9	5	Road Rehabilitation	(LIVE OAK SLOUGH)	Y	-	-	15.7	16.0	124.0%	SWPPP	C	01-Aug-19	01-May-21	02-Jan-22	01-Dec-23
109	03-1H160	Sierra	089	19.95	29.58	5	HMA Overlay	TBD	NA	-	-	0.0	0.0	0.0%	WPCP	E	01-Aug-19	15-Aug-21	01-Apr-22	01-Dec-22
110	03-1H170	Sacramento	005	25.4	34.6	5	Remove and Replace RHMA	TBD	NA	-	-	0.0	0.0	0.0%	WPCP	E	01-Aug-19	15-Aug-20	01-Apr-21	01-Apr-23
111	03-1H180	Nevada	080	13	15.5	6	Road Rehabilitation	TBD	NA	-	-	0.0	0.0	0.0%	WPCP	E	01-Jun-19	01-Aug-20	01-Feb-21	01-Oct-21
112	03-1H190	Sacramento	080	9.6	12.9	5	Cold Plane & Overlay	TBD	NA	-	-	0.0	0.0	0.0%	WPCP	E	01-Aug-19	15-Aug-21	01-Apr-22	02-Aug-23
113	03-1H220	Nevada	049	2	9.4	5	Install Traffic Signal Preemption Devices	TBD	NA	-	-	0.0	0.0	0.0%	TBD	E	-	-	-	17-Aug-28
114	03-1H240	Placer	049	2.22	2.35	5	Realign Roadway. Construct Retaining Wall	TBD	NA	-	-	0.0	0.3	58.3%	TBD	C	01-Jun-17	01-Oct-18	01-Apr-19	01-Dec-19
115	03-1H250	D03-Various	VAR	0	0	-	Replace OH sign panels and sign structures.	TBD	NA	-	-	0.0	0.0	0.0%	TBD	C	01-Aug-19	15-Aug-21	15-Apr-22	01-Dec-23
116	03-1H260	Nevada	080	18.28	19.29	5	Truckee CHP Water Supply	-	-	-	-	-	-	-	-	-	01-Jul-16	-	01-Apr-17	01-Feb-20
117	03-1H270	Yuba	070	9.28	13.23	5	Bridge Rail Upgrade	TBD	NA	-	-	0.0	0.0	0.0%	TBD	E	01-Aug-19	15-Aug-20	15-Apr-21	01-Dec-22

Table 6-1: District 3 Anticipated Project Development and Construction Schedule

No.	EA	Project Location					Project Description ^{2,3}	Water Bodies Within or Adjacent to Project Limits ⁴	Dredge and Fill Activities (Y/N/NA) ⁵	Other Regional Water Board Permits Required ⁶	Potential and Actual Impacts of Project's Discharge ⁷	Disturbed Soil Area (acres)	Area of New Impervious Surface (acres)	Percentage of New Impervious Surface to Existing Impervious Surface	Description of Construction Controls (SWPPP/WPCP/TBD) ⁸	Post-Construction Treatment Control Type, Quantity ⁹	Anticipated Project Delivery Schedule		Construction Period	
		Co.	Route	Begin PM	End PM	RB ¹											PA&ED Date	PS&E Date	Start Date	End Date
118	03-1H380	Sacramento	099	32.5	33.5	5	Construct Aux Lanes	TBD	NA	-	-	0.0	0.0	0.0%	TBD	C	27-Jan-17	30-May-17	15-Feb-18	01-Dec-18
119	03-1H440	El Dorado	050	6.464	6.464	5	Lower sidewalk to grade, build retaining wall and	TBD	NA	-	-	0.0	0.0	0.0%	TBD	C	01-Feb-17	01-Aug-19	01-Apr-20	01-Dec-20
120	03-1H500	Yuba	020	1.23	1.32	5	Acquire Parking Lot	TBD	NA	-	-	0.0	0.0	0.0%	TBD	C	24-May-19	-	16-Dec-24	22-Feb-29
121	03-1H520	D03-Various	VAR	0	0	5	Purchase Habitat Mitigation	None	NA	-	-	0.0	0.0	0.0%	TBD	E	01-Aug-19	15-Aug-21	15-Apr-22	01-Dec-22
122	03-1H610	Sacramento	005	23.59	23.59	5	Repair Bridge Steel Elements	TBD	NA	-	-	0.0	0.0	0.0%	WPCP	E	24-Jun-19	05-Dec-24	15-Jan-25	22-Mar-29
123	03-1H630	Sacramento	099	13.3	16	5	Construct Auxiliary Lanes	TBD	NA	-	-	1.5	1.8	31.6%	TBD	C	27-Jun-19	10-Dec-24	21-Jan-25	27-Mar-29
124	03-2A920	Placer	089	0	8.6	6	Lakeside EIP	-	Y	-	-	-	-		SWPPP	-	30-Jun-06	10-Mar-11	01-Sep-11	15-Jul-17
125	03-2E550	El Dorado	050	8.3	8.8	5	Upgrade interchange	TBD	N	-	-	-	0.0	0.0%	TBD	C	01-Jun-17	01-Oct-19	01-Dec-20	01-Jun-23
126	03-2F080	Yuba	VAR	0	0	5	ADA upgrades; sidewalks, ramps, accessible traffic	NONE	N	-	-	0.10	1.4	8.7%	WPCP	E	22-Jul-15	01-Sep-17	01-May-18	01-Oct-19
127	03-2F090	Sutter	020	12.1	17.1	5	Upgrade/install ADA infrastructure including curb	ND	N	-	-	0.6	0.0	0.0%	WPCP	E	01-Aug-19	15-Aug-20	15-Apr-21	01-Dec-22
128	03-2F130	El Dorado	050	38	58	5	INSTALL SANDTRAPS AND PULLOUTS	American River	N	-	-	0.0	0.0	0.0%	WPCP	TST,20	01-Jun-16	01-Sep-17	01-Apr-18	01-Oct-19
129	03-2F240	El Dorado	193	0	0	5	Construct 4 Turnouts	TBD	N	-	-	0.5	0.2	0.0%	WPCP	E	04-Dec-15	01-Dec-17	01-Jun-18	01-Jan-19
130	03-2F320	Yuba	020	8	10.2	5	Widen Shoulders and Rehab Pavement	STAHL DITCH/CORDUA CANAL/(JACK SLOUGH)/(LOWER YUBA RIVER)	Y	-	-	13.0	3.0	28.0%	SWPPP	C	01-Jun-16	15-Jan-18	02-Jan-19	15-Nov-19
131	03-2F340	Placer	049	3.1	7.5	5	Shoulder Widening	TBD	N	-	-	1.9	1.6	0.0%	SWPPP	C	15-Jun-16	01-Feb-18	01-Oct-18	01-Oct-20
132	03-2F510	Yuba	070	14.117	14.117	5	E Street Bridge Curb & Ramps	TBD	N	-	-	0.0	0.0	0.0%	TBD	C	01-Oct-16	-	01-Jul-17	01-Jul-18
133	03-2F520	Butte	162	16	16.7	5	Traffic Signal Upgrades	LOWER FEATHER RIVER (LAKE OROVILLE DAM CONFLUENCE WITH SACRAMENTO RIVER)	N	-	-	0.2	0.1	0.0%	WPCP	E	14-Dec-15	01-Dec-17	01-Jul-18	01-Dec-19
134	03-2F570	Placer	080	28.7	63.52	5	Bridge Rehabilitation Various, Including Deck Rehab	TBD	N	-	-	0.0	0.0	0.0%	TBD	C	02-Jan-18	01-Feb-20	15-Dec-20	01-Dec-25
135	03-2F590	Yuba	020	20.1	21.6	5	SHOULDER WIDENING AND CURVE IMPROVEMENTS	(YUBA RIVER)	Y	-	-	22.9	3.7	56.1%	SWPPP	C	29-Jan-16	01-Dec-17	15-Aug-18	01-Nov-20
136	03-2F770	Colusa	020	0	10.2	5	Roadway Rehab	TBD	N	-	-	0.0	0.0	0.0%	TBD	C	01-Aug-18	01-Nov-19	15-Aug-20	15-Nov-21
137	03-2F920	Placer	065	10.6	11.7	5	Construct New Interchange	ORCHARD CREEK, PLEASANT GROVE CREEK	N	-	-	98.8	62.8	347.0%	SWPPP	C	01-Jun-16	-	01-Dec-17	01-Dec-19
138	03-2F980	Colusa	020	31.8	32.8	5	Pvmt Rehab & Widening	Colusa Basin Drain	N	-	-	9.1	1.5	17.5%	SWPPP	C	01-Oct-16	01-Mar-17	01-Dec-17	01-Dec-19
139	03-37422	Yolo	005	6.4	6.8	5	I5-SR113 CONNECTOR	Tule Canal	N	-	-	6.4	4.1	0.0%	SWPPP	BS,1	06-Apr-00	01-Jan-19	01-Nov-27	01-Nov-30
140	03-3A760	Placer	089	7.5	9.4	6	Operational Improvements Realignment, Bike/Ped Imp	Lower Truckee River	Y	-	-	21.6	2.1	20.2%	TBD	D,6 TST,2 MF,3	17-Jun-16	01-Jun-17	01-Oct-17	01-Sep-18
141	03-3C001	Sacramento	005	9.7	22.5	5	Sac 5 Corridor Projects	Sacramento River/Delta Water Ways	N	-	-	93	0.0	0.0%	SWPPP	C	-	15-Jan-17	26-Jan-18	15-Dec-21
142	03-3C380	El Dorado	050	75.4	77.3	6	STORM WATER MITIGATION	(LAKE TAHOE)/TROUT CREEK/(UPPER TRUCKEE RIVER)	N	-	-	21.5	0.6	2.7%	SWPPP	ID,1 TST,53	16-Jun-09	02-May-16	15-Jan-17	01-Oct-20
143	03-3E010	Yuba	070	13.5	16.1	5	New Highway Construction	Feather River	N	-	-		0.0	0.0%	TBD	C	01-Jul-19	15-Aug-21	15-Apr-22	01-Dec-25

Table 6-1: District 3 Anticipated Project Development and Construction Schedule

No.	EA	Project Location					Project Description ^{2,3}	Water Bodies Within or Adjacent to Project Limits ⁴	Dredge and Fill Activities (Y/N/NA) ⁵	Other Regional Water Board Permits Required ⁶	Potential and Actual Impacts of Project's Discharge ⁷	Disturbed Soil Area (acres)	Area of New Impervious Surface (acres)	Percentage of New Impervious Surface to Existing Impervious Surface	Description of Construction Controls (SWPPP/WPCP/TBD) ⁸	Post-Construction Treatment Control Type, Quantity ⁹	Anticipated Project Delivery Schedule		Construction Period	
		Co.	Route	Begin PM	End PM	RB ¹											PA&ED Date	PS&E Date	Start Date	End Date
144	03-3E050	Placer	080	28.5	31.5	5	Drainage Rehab	TBD	N	-	-	0.0	0.0	0.0%	WPCP	E	15-Jun-16	01-Aug-17	01-Mar-18	01-Oct-18
145	03-3E380	Sacramento	050	15.6	16	5	Modify Overcrossing and Extend	AMERICAN RIVER, LAKE NATOMA, FOLSOM SOUTH CANAL, BUFFALO CREEK	Y	-	-	49.7	36.2	136.1%	SWPPP	C	30-Sep-17	-	01-Nov-19	01-May-22
146	03-3F060	Glenn	162	76.7	76.7	5	Seismic Retrofit on Two Bridges	SACRAMENTO RIVER (RED BLUFF TO KNIGHTS LANDING)	Y	-	-	3.6	4.3	413.6%	SWPPP	C	01-Oct-17	02-Jul-19	01-Apr-20	01-Nov-22
147	03-3F070	Sacramento	051	2.64	2.97	5	American River Bridge Widening	AMERICAN RIVER, LOWER	N	-	-	1.9	2.8	63.6%	SWPPP	C	01-Aug-18	01-Jan-20	01-Dec-20	01-Oct-22
148	03-3F090	Sacramento	VAR	0	0	5	Seismic Retrofit on 4 Bridges	TBD	N	-	-	0.0	0.0	0.0%	TBD	E	01-Sep-16	12-Mar-18	03-Oct-18	01-Oct-21
149	03-3F130	D03-Various	VAR	0	0	5	ADA Curb Ramps	TBD	N	-	-	0.0	0.0	0.0%	WPCP	E	01-Aug-16	15-Nov-17	15-Jul-18	14-Dec-18
150	03-3F140	D03-Various	005	0	0	5	Curb ramp Upgrades at Various Locations	TBD	N	-	-	0.0	0.0	0.0%	TBD	E	01-Feb-17	01-Jun-18	03-Jan-19	01-Nov-19
151	03-3F230	Placer	080	4.5	5.9	5	Construct Eastbound Auxiliary Lane	TBD	N	-	-	19.0	4.0	15.4%	SWPPP	BS,2	15-Apr-16	01-Sep-18	01-Apr-19	15-Sep-20
152	03-3F250	Nevada	080	29.1	29.4	6	Stabilize Cut Slope	Truckee River	N	-	-	1.3	0.0	0.0%	SWPPP	E	01-Aug-17	01-Aug-18	01-Apr-19	01-Dec-19
153	03-3F280	Butte	070	8.8	11.8	5	BUT 70 Four Lane Widening	Honcutt Creek, Feather River	Y	-	-	133.0	100.2	6262.5%	SWPPP	C	10-Feb-17	01-Jun-18	15-Feb-19	31-Dec-20
154	03-3F281	Butte	070	5.67	8.8	5	SR 70 Passing Lanes	TBD	N	-	-	0.0	0.0	0.0%	TBD	C	01-Dec-16	01-Sep-18	01-Jun-19	15-Nov-20
155	03-3F360	Sacramento	050	0.2	6.1	5	Bus/Carpool Lane Additions	TBD	N	-	-	0.0	0.0	0.0%	TBD	C	15-Jan-17	15-Feb-18	15-Oct-18	01-Nov-21
156	03-3F480	Placer	080	41.4	42.2	5	Replace Existing Waste Water Distribution System	CANYON CREEK	N	-	-	10.0	0.0	0.0%	SWPPP	C	21-Mar-16	23-Dec-16	01-Sep-17	01-Nov-19
157	03-3F500	Glenn	005	3.27	27.9	5	Glenn 5 Roadside Safety	TBD	N	-	-	0.0	0.0	0.0%	TBD	C	01-Oct-18	16-Aug-21	15-Apr-22	01-Dec-23
158	03-3F510	Yuba	020	18.19	20.23	5	Yuba 20 Shoulder Widening	NID FARM DITCH, SANFORD CREEK, LOWER YUBA RIVER	Y	-	-	35.0	4.2	42.4%	SWPPP	C	01-Oct-16	01-Apr-18	01-Nov-18	01-Nov-21
159	03-3F530	El Dorado	050	67.3	67.3	6	Bridge Widen or Replacement	ND	N	-	-	0.3	0.1	0.0%	WPCP	E	01-Dec-16	15-Mar-18	30-Nov-18	01-Dec-19
160	03-3F540	Sacramento	VAR	0	0	5	Scour Mitigation	American River	N	-	-	0.0	0.0	0.0%	TBD	E	01-Feb-17	01-Jun-18	01-May-19	01-Oct-21
161	03-3F550	Yolo	275	13.07	13.07	5	Replace Bridge Fender System	Sacramento River	N	-	-	0.0	0.0	0.0%	WPCP	E	08-Jan-16	01-Oct-17	15-Jun-18	01-Nov-20
162	03-3F560	Sutter	020	17	17	5	Bridge Scour Protection	TBD	N	-	-	0.0	0.0	0.0%	TBD	E	01-Aug-17	-	01-Jul-19	01-Nov-20
163	03-3F570	Sacramento	012	0.4	0.4	5	Paint Bridge	TBD	N	-	-	0.0	0.0	0.0%	TBD	E	30-Jun-16	01-Jan-17	01-Oct-17	01-Oct-19
164	03-3F680	Nevada	174	9.71	10.14	5	GV ADA Project	South Fork	N	-	-	0.0	0.0	0.0%	TBD	E	01-Oct-17	-	02-Sep-19	03-Feb-20
165	03-3F740	Placer	089	13.73	21.58	6	Truckee River Bike Trail	Truckee River, Squaw Creek, Pole, Deep, Brush, Cabin Creek	N	-	-	-	-	-	TBD	E	01-Apr-16	-	01-May-17	01-Oct-17
166	03-3F750	Sacramento	051	1.4	2.6	5	Operational Improvements - Extend #4 Lane NB	AMERICAN RIVER, LOWER (NIMBUS DAM TO CONFLUENCE WITH SACRAMENTO RIVER)	N	-	-	4.0	3.0	48.3%	SWPPP	C	01-Jun-18	01-Nov-19	31-Oct-20	01-Nov-22
167	03-3F760	Butte	191	6.8	8.6	5	Realign Curves, Widen Shoulders	CLEAR CREEK	Y	-	-	28.8	0.1	1.5%	SWPPP	C	18-May-15	01-Jun-16	15-Jan-17	02-Jan-19
168	03-3F840	D03-Various	VAR	1	1	5,6	Upgrade Traffic Monitoring System	TBD	N	-	-				TBD	E	04-Jun-15	15-Oct-15	15-Aug-16	01-Dec-17
169	03-3F850	D03-Various	VAR	0	0	5	Riverfront/Streetcar Project	TBD	N	-	-	0.0	0.0	0.0%	TBD	C	12-Feb-16	-	29-Nov-16	29-Nov-18
170	03-3F870	Placer	049	7.16	7.16	5	Placer 49 at Shale Ridge Rd. Install Traffic Signal	Rock Creek	N	-	-				TBD	E	03-Aug-16	-	01-May-17	02-Jul-18

Table 6-1: District 3 Anticipated Project Development and Construction Schedule

No.	EA	Project Location					Project Description ^{2,3}	Water Bodies Within or Adjacent to Project Limits ⁴	Dredge and Fill Activities (Y/N/NA) ⁵	Other Regional Water Board Permits Required ⁶	Potential and Actual Impacts of Project's Discharge ⁷	Disturbed Soil Area (acres)	Area of New Impervious Surface (acres)	Percentage of New Impervious Surface to Existing Impervious Surface	Description of Construction Controls (SWPPP/WPCP/TBD) ⁸	Post-Construction Control Type, Quantity ⁹	Anticipated Project Delivery Schedule		Construction Period	
		Co.	Route	Begin PM	End PM	RB ¹											PA&ED Date	PS&E Date	Start Date	End Date
171	03-3F920	Nevada	080	19	19.4	6	Replace Floriston Sand House	Truckee River, Station Creek	N	-	-	0.0	0.0	0.0%	TBD	C	15-Jun-16	01-Jun-18	20-Mar-19	18-Dec-19
172	03-3F990	Sutter	099	38.4	42.14	5	Live Oak Street Scape	RECLAMATION DISTRICT 777, EAST INTERCEPTOR CANAL, WADSWORTH CANAL, SUTTER BYPASS, SACRAMENTO RIVER	N	-	-	45.0	47.0	213.6%	SWPPP	C	01-Aug-17	01-Jul-19	01-Mar-20	01-Oct-21
173	03-4E170	Nevada	049	11.1	13.3	5	Widen SR 49 to Four-Lane Conventional Access Control	TBD	N	-	-	0.0	0.0	0.0%	TBD	C	01-Dec-17	01-Oct-20	01-Jun-21	01-Dec-23
174	03-4E520	D03-Various	VAR	VAR	VAR	5,6	Install Pony Express Auto Tour Route Highway Signs	TBD	N	-	-	-	-	-	TBD	E	-	-	01-Apr-16	01-Dec-17
175	03-4E620	El Dorado	050	22	24.3	5	Various Safety Improvements	Weber Creek	Y	-	-	26.0	8.3	54.6%	SWPPP	C	01-Jun-17	01-Jul-18	01-Jun-19	01-Dec-21
176	03-4E860	Placer	193	4.4	5.4	5	Curve Improvement and Widening	Auburn Ravine	Y	-	-	8.4	2.3	71.88%	SWPPP	BS, 4	24-Apr-13	-	23-Sep-15	15-Feb-18
177	03-4F050	Butte	070	22.1	28.2	5	HMA Overlay	TBD	N	-	-	0.0	0.0	0.0%	WPCP	E	01-Jun-16	01-Nov-16	01-Jun-17	01-Aug-18
178	03-4F060	Glenn	005	0	20	5	HMA Overlay	LOGAN CREEK/GLENN-COLUSA CANAL/WILLOW CRREK/WILSON CREEK/WALKER CREEK	N	-	-	-	0.0	0.0%	WPCP	E	24-Jun-15	15-Feb-16	01-Dec-16	01-Dec-18
179	03-4F100	Sacramento	VAR	0	0	5	Seismic Retrofit	TBD	N	-	-	0.0	0.0	0.0%	TBD	E	01-Sep-17	01-May-19	01-Mar-20	01-Nov-21
180	03-4F110	D03-Various	162	43.5	84.2	5	Railing Upgrade for 19 Bridges	Var	N	-	-	0.0	0.0	0.0%	TBD	E	01-Sep-18	15-Jul-19	01-Apr-20	01-Nov-22
181	03-4F170	Yolo	016	25.2	28.3	5	Esparto Ped Impv	TBD	N	-	-	0.0	0.0	0.0%	TBD	C	01-Mar-17	01-Nov-18	01-Jun-19	01-Nov-19
182	03-4F200	Sierra	049	15.21	15.21	5	Repair Embankment	North Yuba River	NA	-	-	-	-	-	TBD	E	01-Sep-17	-	01-Jun-18	01-May-18
183	03-4F240	Sacramento	005	8.49	8.49	5	Reconstruct I-5 Hood Franklin Rd I/C	TBD	N	-	-	0.0	0.0	0.0%	TBD	C	01-Jun-16	-	01-Feb-20	01-Sep-22
184	03-4F250	Placer	080	25.9	28.5	5	Culvert Rehab	TBD	N	-	-	0.0	0.0	0.0%	TBD	E	03-Jul-17	15-Nov-18	05-Sep-19	15-Nov-20
185	03-4F320	Sacramento	099	11.6	11.6	5	New Interchange at Whitelock Parkway and SR 99	TBD	N	-	-	0.0	0.0	0.0%	TBD	C	20-Sep-18	-	01-May-21	15-Jan-23
186	03-4F370	Nevada	174	2.74	4.63	5	Shoulder Widening and Curve Improvements	ROLLINS RESERVOIR	N	-	-	6.5	8.1	324.0%	SWPPP	C	15-Aug-16	01-Dec-17	01-Jul-18	01-Oct-19
187	03-4F380	Yuba	070	16.2	25.8	5	Widen Shoulders, Improve Clear Recovery Zone	Feather River	N	-	-	6.5	13.0	30.0%	SWPPP	C	01-Sep-17	01-Jul-19	01-Jun-20	01-Dec-22
188	03-4F400	Sacramento	005	33.1	33.1	5	Weigh-in Motion Repairs and Concrete Pavement Replacement	TBD	N	-	-	0.0	0.0	0.0%	TBD	E	15-Feb-18	15-Jul-18	15-Feb-19	15-Feb-20
189	03-4F420	Glenn	005	14.6	14.6	5	Upgrade Water and Sewage System to Comply	TBD	N	-	-	0.0	0.0	0.0%	TBD	E	10-Oct-18	15-Jun-19	15-Feb-20	01-Oct-21
190	03-4F430	Colusa	005	24.3	24.3	5	Upgrade Water and Sewage System to Comply	TBD	N	-	-	0.0	0.0	0.0%	TBD	E	01-Jul-17	01-Jul-18	15-Feb-19	01-Oct-21
191	03-4F450	Sacramento	005	9.7	22.7	5	Installation of Fiber Optic Cable	Sacramento - San Joaquin River Delta Estuary	N	-	-	0.0	0.0	0.0%	WPCP	E	30-May-16	01-Nov-16	26-Jan-18	15-Dec-21
192	03-4F460	Sacramento	050	0	5.1	5	Installation of Fiber Optics Communication Lines	TBD	N	-	-	0.0	0.0	0.0%	WPCP	E	30-Jun-16	01-Aug-17	01-Apr-18	01-May-19
193	03-4F490	Sierra	089	VAR	VAR	5,6	Construct Truck Turnouts	Little Truckee River, Cold Stream Creek	NA	-	-	-	-	-	TBD	C	14-Sep-15	01-Nov-16	01-May-17	05-Jan-18
194	03-4F580	Sacramento	005	33.7	33.7	5	Upgrade Water and Sewage System to Comply	TBD	N	-	-	0.0	0.0	0.0%	TBD	E	09-Sep-17	08-Aug-18	15-Apr-19	15-Aug-20

Table 6-1: District 3 Anticipated Project Development and Construction Schedule

No.	EA	Project Location					Project Description ^{2,3}	Water Bodies Within or Adjacent to Project Limits ⁴	Dredge and Fill Activities (Y/N/NA) ⁵	Other Regional Water Board Permits Required ⁶	Potential and Actual Impacts of Project's Discharge ⁷	Disturbed Soil Area (acres)	Area of New Impervious Surface (acres)	Percentage of New Impervious Surface to Existing Impervious Surface	Description of Construction Controls (SWPPP/WPCP/TBD) ⁸	Post-Construction Treatment Control Type, Quantity ⁹	Anticipated Project Delivery Schedule		Construction Period	
		Co.	Route	Begin PM	End PM	RB ¹											PA&ED Date	PS&E Date	Start Date	End Date
195	03-4F600	Nevada	080	0	20	6	Remove MBGR and Replace with Concrete Barrier (DW)	TBD	N	-	-	0.0	0.0	0.0%	TBD	C	01-Aug-17	01-Oct-18	01-Apr-19	01-Nov-19
196	03-4F610	Sacramento	VAR	0	0	5	Upgrade MBGR, Add Concrete Barrier	TBD	N	-	-	0.0	0.0	0.0%	TBD	C	02-Feb-17	02-Jan-18	02-Jan-20	10-Oct-20
197	03-4F630	D03-Various	VAR	0	0		Upgrade MBGR to Current Standards	TBD	N	-	-	0.0	0.0	0.0%	TBD	C	01-Aug-17	01-Aug-18	01-Mar-19	01-Dec-19
198	03-4F640	Sacramento	VAR	0	0	5	Upgrade MBGR, Add Concrete Barrier	TBD	N	-	-	0.0	0.0	0.0%	TBD	C	01-Jun-17	01-Sep-18	01-May-19	01-Nov-19
199	03-4F680	Yuba	070	13.6	14.1	5	Install Bicycle Railing and Upgrade Pedestrian Ramp	TBD	N	-	-	0.0	0.0	0.0%	TBD	E	15-Apr-17	15-Oct-17	01-May-18	01-Oct-19
200	03-4F690	Yuba	070	8	8.2	5	Remove and Replace Concrete Ditch Lining	TBD	N	-	-	0.0	0.0	0.0%	TBD	E	01-Oct-16	01-Feb-17	30-Jul-17	01-Aug-18
201	03-4F730	D03-Various	VAR	0	0	5	Install Ramp Meters on I-5, 99, 65, and I-80	DELTA WATERWAYS (NORTHERN PORTION), AMERICAN RIVER, LOWER (NIMBUS DAM TO CONFLUENCE WITH SACRAMENTO RIVER), PLEASANT GROVE CREEK, SOUTH BRANCH, SECRET RAVINE, PUTAH CREEK	N	-	-	9.7	7.3	214.7%	SWPPP	C	12-Nov-17	19-Feb-19	02-Nov-19	01-Dec-21
202	03-4F740	Nevada	049	23.2	32.6	5	HMA Overlay	ND	N	-	-	-	-	-	WPCP	E	15-Mar-16	19-Jul-16	01-Apr-17	01-Oct-17
203	03-4F800	Butte	032	8.8	9.54	5	Upgrade/Install ADA Infrastructure	TBD	N	-	-	0.0	0.0	0.0%	TBD	E	01-Jul-17	01-Jul-18	01-Apr-19	15-Nov-20
204	03-4F810	Glenn	032	0	0.8	5	Upgrade/Install ADA Infrastructure	TBD	N	-	-	0.0	0.0	0.0%	TBD	E	01-Aug-17	01-Aug-19	01-Apr-20	01-Dec-20
205	03-4F830	Yolo	005	0.4	28.9	5	Gore Paving and Slope Stabilization Under Bridges	TBD	N	-	-	0.0	0.0	0.0%	-	E	01-Jul-17	01-Sep-18	15-May-19	01-Nov-19
206	03-4F840	El Dorado	050	70.621	70.621	6	Convert Minor Leg Stop Controlled T-Intersection	Upper Truckee River	N	-	-	0.0	0.0	0.0%	TBD	C	01-Nov-16	15-Nov-17	05-Sep-18	20-Mar-20
207	03-4M450	Nevada	020	25.8	32	5	Culvert Rehabilitation	North Fork Deer Creek	N	-	-	-	-	-	TBD	E	30-Jan-14	-	01-Mar-16	01-Nov-17
208	03-4M760	D03-Various	VAR	0	0	5	Repair fencing 3 locations Sac 5, 51, and Yolo 80	TBD	NA	-	-	0.0	0.0	0.0%	TBD	E	11-Mar-16	-	-	01-Nov-19
209	03-4M870	Nevada	VAR	VAR	VAR	6	Replace Damaged Fence	Donner Creek, Prosser Creek Reservoir	N	-	-	-	-	-	TBD	E	14-Sep-15	-	29-Mar-16	01-Nov-17
210	03-4M880	Nevada	080	14.8	16.4	6	Replace Damaged Fence	Donner Lake, Donner Creek	NA	-	-	-	-	-	TBD	-	01-Jul-16	-	01-Jun-17	01-Nov-18

Treatment Control Status Legend	
BMP Device Types:	
BS	Biofiltration Strips and/or Swales
C	Under Consideration
D	Detention Devices
E	Exempt
DWFD	Dry Weather Flow Diversion
GSRD	Gross Solids Removal Devices
ID	Infiltration Devices – Water quality volume infiltrates within the right of way. (When this is demonstrated for at least 90% of the WQV, other types of treatment BMPs are not considered unless there is a location-specific requirement.)
MF	Media Filters
MCTT	Multi-chambered Treatment Trains
TST	Traction Sand Traps
WB	Wet Basins

Table 6-2 lists the planned maintenance projects that will disturb soil.

Table 6-2: District 3 Anticipated Significant Road Maintenance Activities

No.	Co.	Route	Beg PM	End PM	Regional Board	Description	Water Bodies Affected ¹⁰	Other Regional Water Board Permits Required ¹¹	Potential and Actual Impacts of Project's Discharge ¹²	Disturbed Soil Area (acres)	Area of New Impervious Surface (acres)	Percentage of New Impervious Surface to Existing Impervious Surface	Description of Construction Controls (SWPPP/WPCP/TBD/NA) ¹³	Post-Construction Treatment Control Type, Quantity ¹⁴	Start Date	Completion Date
1	YOL	005	10.5	26.0	5	EA 0G720 RHMA Overlay	NA	NA	-	-	-	-	TBD	TBD	-	2017/2018
2	BUT	162	13.9	15.7	5	EA 0G730 Hot Applied Chip Seal	NA	NA	-	-	-	-	TBD	TBD	-	2017/2018
3	COL	020	32.8	39.3	5	EA 0G740 RHMA Overlay	NA	NA	-	-	-	-	TBD	TBD	-	2017/2018
4	ED	050	28.8	38.8	5	EA 0G750 RHMA Overlay	NA	NA	-	-	-	-	TBD	TBD	-	2017/2018
5	GLE	162	37.6	65.5	5	EA 0G760 Hot Applied Chip Seal	NA	NA	-	-	-	-	TBD	TBD	-	2017/2018
6	SAC	050	14.2	23.1	5	EA 0G770 RHMA Overlay	NA	NA	-	-	-	-	TBD	TBD	-	2017/2018
7	VAR	VAR	VAR	VAR	5	EA 0G790 Poly/Meth Joints 17BR	NA	NA	-	-	-	-	TBD	TBD	-	2017/2018
8	VAR	VAR	VAR	VAR	5	EA 0G800 Meth and Joints 10BR	NA	NA	-	-	-	-	TBD	TBD	-	2017/2018
9	YOL	275	113.01	-	5	EA 0G810 Mech/Elect Rehab	NA	NA	-	-	-	-	TBD	TBD	-	2017/2018
10	SAC	005	23	23.4	5	EA 0G820 Repair O St. Outfall	NA	NA	-	-	-	-	TBD	TBD	-	2017/2018
11	NEV	020	17.4	26.2	5	EA 0G830 Repair Culverts	NA	NA	-	-	-	-	TBD	TBD	-	2017/2018

¹⁰ Receiving waters within or adjacent to maintenance activity designated as "303(d) (constituent type)." Activity adjacent to Drinking Water Reservoir or Ground Water Recharge Facilities designated as "DW."

¹¹ Regional Water Board Permits required other than Construction General Permit, such as Clean Water Act Section 401 water quality certification, Waiver of Discharge Requirements, Dewatering Permits, Bridge Painting WDRs, etc.

¹² This information may come from the Water Quality Assessment Report prepared for each project, a Water Quality Technical Memorandum, or other document that evaluates the water quality impacts of a project.

¹³ A description of the Construction Controls is available in the project's Storm Water Pollution Prevention Plan (SWPPP), Water Pollution Control Plan (WPCP), is To Be Determined (TBD) if the Disturbed Soil Area is unavailable, or is Not Applicable (NA) because there is no Disturbed Soil Area associated with the project.

¹⁴ Treatment Control Status identified by: device type/number of devices, exempt ("E"), or under consideration ("C"). See Treatment Control Status Legend below for device type abbreviations.

Treatment Control Status Legend	
BMP Device Types:	
BS	Biofiltration Strips and/or Swales
C	Under Consideration
D	Detention Devices
E	Exempt
DWFD	Dry Weather Flow Diversion
GSRD	Gross Solids Removal Devices
ID	Infiltration Devices – Water quality volume infiltrates within the right of way. (When this is demonstrated for at least 90% of the WQV, other types of treatment BMPs are not considered unless there is a location-specific requirement.)
MF	Media Filters
MCTT	Multi-chambered Treatment Trains
TST	Traction Sand Traps
WB	Wet Basins

Table 6-3 lists the District's planned monitoring activities.

Table 6-3: District 3 Monitoring Activities

Statewide Monitoring Program Activities
<p>The District plans to:</p> <ul style="list-style-type: none">• Conduct monitoring activities for compliance with the Lake Tahoe TMDL and as part of the implementation of the Lake Clarity Crediting Program (LCCP). This includes field data collection, analysis and reporting activities, the application of various associated modeling and registration tools, and the preparation of an updated Pollutant Load Reduction Plan (PLRP).• Conduct monitoring activities in the Lake Tahoe Basin to verify the accuracy and validity of the field observation and data management tool, Road Rapid Assessment Method (Road RAM), as well as to build upon previous monitoring studies that were conducted to demonstrate water quality benefits and potential pollutant load reductions associated with the use of improved abrasives. In support of this effort, a series of comprehensive verification and monitoring activities will be conducted in the Lake Tahoe Basin.• Conduct studies to evaluate the effectiveness of BMPs in the Lake Tahoe Basin by monitoring retrofitted sand vaults.• Implement monitoring and discharge characterization activities as required in the Conformed NPDES Permit and as specified in the SWMP.

This page was intentionally left blank.

7 Region-Specific Activities

Section 7 of the DWP identifies the applicable region-specific activities that District 3 has planned for the fiscal year 2017-18 to comply with Attachment V of the Conformed NPDES Permit.

Lahontan Region

Numeric Sizing for Stormwater Treatment Control BMPs

Where stormwater runoff is determined to have connectivity to surface waters and/or is not adequately infiltrated or treated by the natural environment, stormwater/urban runoff collection, treatment, and/or infiltration disposal facilities shall be designed, installed, and maintained by the 20-year, one hour design storm within the Truckee River Hydrologic Unit (3/4 inches of rain).

Natural Environment as Treatment (NEAT) Treatment Control Design

It is the intent that the Natural Environment As Treatment (NEAT) Report will serve as the basis for Lahontan Regional Board and Caltrans District 3 to develop a consensus-based approach for the prioritization and selection of water quality improvements for state highways within the Lake Tahoe and Truckee River Hydrologic Units.

The NEAT Report includes a summary of design recommendations for existing and future water quality improvement projects located within the Lake Tahoe and Truckee River Hydrologic Units; and step-by-step processes for Caltrans and Regional Board staff to utilize during project scoping, approval, and design. Water quality treatment recommendations, provided herein, are consistent with the current Project Planning and Design Guide (PPDG), as well as the Regional Board's region-specific requirements in the Caltrans NPDES Permit. In addition, the established NEAT process is not intended to replace existing Caltrans project development procedures and processes, but is intended to supplement them.

Vegetation Removal or Existing Ground Surface Disturbance Prohibition

District 3 will comply with the vegetation removal or existing ground surface disturbance prohibition requirements within the Lahontan Region as described in the Conformed NPDES Permit.

Project Review Requirements

District 3 will comply with the project review requirements within the Lahontan Region as described in the Conformed NPDES Permit.

This page was intentionally left blank.