

**California Department of Transportation
Stormwater Management Program
District 10 Work Plan**

Fiscal Year

2017-2018

CTSW-RT-16-316.11.1



California Department of Transportation
Division of Environmental Analysis
Stormwater Management Program
1976 E. Dr. Martin Luther King, Jr. Blvd.
Stockton, CA 95206

<http://www.dot.ca.gov/hq/env/stormwater>

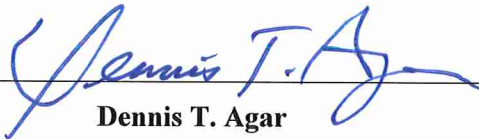
October 1, 2016



For individuals with sensory disabilities, this document is available in alternate formats upon request. Please call or write to the Stormwater Liaison, Caltrans Division of Environmental Analysis, MS-27, P.O. Box 942874, Sacramento, CA 94274-0001, (916) 653-8896 Voice, or dial 711 to use a relay service.

**California Department of Transportation
District 10 Certification
District Work Plan 2017-18**

I certify under penalty of law that this document and all attachments were prepared under my direction or supervision in accordance with a system designed to assure that qualified personnel properly gather and evaluate the information submitted. Based on my inquiry of the person or persons who manage the system, or those persons directly responsible for gathering the information, the information submitted is to the best of my knowledge and belief, true, accurate, and complete. I am aware that there are significant penalties for submitting false information, including the possibility of fine and imprisonment of knowing violations. [40 CFR 122.22(d)]



Dennis T. Agar

9/06/16

Date

District 10

This page was intentionally left blank.

Table of Contents

1	Introduction	1-1
2	District Personnel and Responsibilities	2-1
3	District Facilities and Water Bodies	3-1
4	Drinking Water Reservoirs and Recharge Facilities.....	4-1
5	Slopes Prone to Erosion	5-1
6	Implementation.....	6-1
7	Region-Specific Activities	7-1

Figures

Figure 2-1: District 10 Organizational Chart	2-11
Figure 5-1: District 10 2016 Areas Prone to Erosion.....	5-3

Tables

Table 2-1: District 10 Stormwater Personnel and Responsibilities.....	2-7
Table 2-2: District 10 Signatory Authority for Key Documents.....	2-8
Table 4-1: District 10 Drinking Water Reservoirs and Recharge Facilities	4-1
Table 5-1: District 10 Inventory of Road Segments Prone to Erosion.....	5-1
Table 6-1: District 10 Anticipated Project Development and Construction Schedule.....	6-3
Table 6-2: District 10 Anticipated Significant Road Maintenance Activities	6-34
Table 6-3: District 10 Monitoring Activities	6-35

This page was intentionally left blank.

1 Introduction

General Information about the District Work Plan

The District Work Plans (DWP) describe the organization of each California Department of Transportation (Caltrans) District's stormwater program and outline the planned stormwater activities for the upcoming fiscal year. They are prepared and submitted on October 1 each year. Since the DWP is District-specific, each Regional Water Quality Control Board (RWQCB or Regional Board) is provided a copy of the DWPs relevant to their jurisdiction.

This DWP presents information about the District 10 water bodies, Best Management Practices (BMPs), and monitoring programs. It describes how the District will specifically implement the requirements of the Statewide Stormwater Management Plan (SWMP) during fiscal year 2017-18. Implementation activities will be conducted in accordance with the procedures presented in the SWMP. In addition, this DWP fulfills Provision E.3.b of the National Pollutant Discharge Elimination System (NPDES) Statewide Storm Water Permit Waste Discharge Requirements (WDRs) for State of California Department of Transportation (Order Number 2012-0011-DWQ, NPDES Number CAS000003, Effective July 1, 2013) (NPDES Permit). The NPDES Permit was amended by Orders WQ 2014-0006-EXEC (January 17, 2014), WQ 2014-007-DWQ (May 20, 2014), and WQ 2015-0036-EXEC (April 7, 2015). A conformed NPDES Permit was issued on April 7, 2015 (Conformed NPDES Permit), available on the California State Water Resources Control Board's (SWRCB) website:

http://www.swrcb.ca.gov/board_decisions/adopted_orders/water_quality/2012/wq2012_0011_dwq_conformed_signed.pdf.

The DWP's seven sections describe how the District plans to implement the stormwater program during the upcoming fiscal year. Section 1 introduces the DWP, describes its organizational structure, and identifies the key goals and commitments made by the District for the upcoming fiscal year. Section 2 describes the personnel with stormwater operations responsibilities in the District. In Section 3, the District's facilities are listed and categorized by type and location. Section 4 describes and identifies the high-risk locations where spills from the District's owned rights-of-way, roadways or facilities can discharge directly to a drinking water reservoir or ground water recharge facility. In Section 5, the District's road segments that are prone to erosion are identified. Section 6 summarizes the District's implementation activities, including projects that will be in the design and construction phases during the fiscal year, maintenance projects, and planned stormwater monitoring activities. Section 7 identifies the planned region-specific activities (if applicable) to address the requirements listed in Attachment V of the Conformed NPDES Permit.

District Goals and Commitments

The District will implement the Stormwater Management Plan (SWMP) and use updated Stormwater Quality Handbooks and Guidance to ensure that every project and all construction and maintenance activities implement the appropriate combination of temporary and permanent BMPs. The District's stormwater program will continue compliance monitoring practices, BMP implementation, stormwater documentation, tracking and reporting, and partnering with various local and stormwater agencies. The District will continue to partner with the local Municipal Separate Storm Sewer Systems (MS4s), including the City of Stockton, City of Modesto, and San Joaquin County, in an effort to further public education and outreach for compliance with water quality law. The District will continue to participate with the Division of Environmental Analysis to evaluate and implement necessary process improvements to the stormwater program. The District will continue to implement the requirements of the Construction General Permit, State Water Board Order No. 2009-0009-DWQ, including electronic submittals of Project Registration Documents via the Stormwater Multi-Application Report Tracking System (SMARTS).

The District will evaluate training needs, and comply with any changes, revisions and amendments resulting from the issuance of the new Caltrans NPDES Permit, including the formulation of an updated SWMP. The District will continue to provide training to staff, and will be offering to Construction, Encroachment Permits, and NPDES staff the Qualified SWPPP Developer Training Course and SMARTS training, for implementation of the Construction General Permit, as needed. The District's NPDES/Stormwater unit will hold District Stormwater meetings on an 'as-needed' basis, to include representatives from the District's Division of Planning and Local Assistance, Design, Maintenance, Construction, Landscape Architecture, Right-of-Way, Hydraulics, and Encroachment Permits Office, to further the implementation and compliance of the SWMP and stormwater policy and process.

2 District Personnel and Responsibilities

Section 2 of the DWP describes positions, addresses, and telephone numbers of personnel with responsibilities for stormwater operations within the District. This section also identifies positions having signatory authority for various notifications or documents required for submittal by a District (e.g., Project Registration Documents, including Notices of Intent or NOI).

Central Region Environmental NPDES Branch Manager

The Central Region Environmental NPDES Branch Manager (CR NPDES Manager) is the manager in charge of all stormwater activities in Districts 5, 6, and 10. The CR NPDES Manager is responsible for establishing an effective stormwater program, and communicating, collaborating, and coordinating stormwater activities with Headquarters and other District Program Managers (Division Chiefs). The CR NPDES Manager provides support, direction, and guidance to the District Stormwater Coordinator (DSWC). The responsibilities of the CR NPDES Manager include:

- Coordinating Central Region operations regarding stormwater.
- Coordinating District efforts within the Central Region to achieve compliance with the Caltrans NPDES Permit and SWMP.
- Serving as a resource to the District Directors on NPDES/stormwater quality issues.
- Serving as the ultimate signatory authority in the Region for all compliance documents (Stormwater Data Report) and commitments regarding stormwater management. Further coordination will occur regarding the transfer of Signatory authority to Construction staff for NOI filing via SMARTS, including identification of necessary changes in programmatic roles and responsibility assignments due to the anticipated adoption of the new Caltrans NPDES Permit.
- Serving as the primary liaison and single point of contact on stormwater and waste discharge issues between the Districts and Headquarters, the State Water Resources Control Board (SWRCB) and Regional Boards, U.S. Environmental Protection Agency, and other agencies.
- Assisting with the preparation and review of the Rapid Stream Stability Assessment documentation for projects subject to that requirement under the 2012 NPDES Permit.
- Ensuring the accuracy and adequacy of the stormwater workload allocations for each fiscal year.
- Coordinating and tracking resource distributions, workloads, and projects within the Central Region.
- Providing guidance and direction necessary to develop strategies for addressing regulations and mandates on stormwater waste discharges set forth by federal, state, and local regulatory agencies.
- Reconciling disputes and disagreements on policies, activities, assignments, and responsibilities regarding stormwater issues.
- Continuing to assist and support Construction staff with SMARTS input.
- Establishing impartial and equitable decisions that benefit Caltrans in attaining the objectives of the Stormwater Program.
- Acting as the District Program Advisor for the 335 SHOPP Program. The 335 SHOPP Program funds projects to comply with TMDLs and other water quality orders.
- Acts as an Approved Signatory, designated by the Duly Authorized Representative (District Director), for electronic report and data submittals in SMARTS for the Caltrans MS4 Permit.

District NPDES Stormwater Coordinator

The District NPDES Stormwater Coordinator (DSWC) is the principal person responsible for the day-to-day implementation of the Caltrans NPDES Permit and SWMP at the District level. Under the general direction of the CR Environmental NPDES Branch Manager, the DSWC is responsible for identifying issues and developing recommendations related to stormwater quality, regulated wastes, and other environmental issues that affect their respective District. The specific stormwater tasks for which the DSWC is responsible include the following:

- With the assistance of the CR NPDES Manager, providing guidance and direction for the preparation, development, and implementation of a comprehensive District Stormwater Program, as described in the DWP.
- Providing oversight of activities related to notification procedures for reuse of soil containing lead in accordance with variances issued by the Department of Toxic Substances Control (DTSC).
- Assisting the District functional units in prioritizing, monitoring, tracking, and evaluating stormwater resources, activities, and operations.
- Implementing a quality assurance and quality control program for monitoring the activities of the District functional units, in order to ensure that the conditions of the Caltrans NPDES Permit, SWMP and the DWP are implemented properly.
- Representing the District at the Stormwater Advisory Team (SWATs) identified in the SWMP.
- Monitoring and evaluating the stormwater activities and procedures of municipalities, developers, and other agencies.
- Working as leader and chairperson of the District Stormwater Functional Team Committee.
- Assisting in the determination and evaluation of stormwater impacts during California Environmental Quality Act and/or National Environmental Policy Act (CEQA/NEPA) screening.
- Evaluating and recommending permanent control and treatment measures to address project stormwater impacts.
- Assisting in the identification of costs related to water pollution control, non-stormwater discharges, and waste management in program documents.
- Assisting in the development of new specifications, details, and guidance materials related to non-stormwater discharges and waste management.
- Assisting in the preparation of contract specifications and estimates to address development of Stormwater Pollution Prevention Plans (SWPPPs)/Water Pollution Control Programs (WPCPs).
- Assisting with the preparation and review of the Rapid Stream Stability Assessment documentation for projects subject to that requirement under the new Caltrans NPDES Permit (Order 2012-011-DWQ).
- Assisting in the preparation of the contract Project Specifications and Estimates (PS&E) requiring permanent stormwater control measures to improve or minimize water quality impacts.
- Determining project Risk Level during the project planning, project approval and environmental document, and PS&E phases.
- Assisting the District Encroachment Permits Branch in evaluating water quality impacts and requirements of encroachment permit applications.

- Assisting in the development of training programs, specifically those attributed to Design staff.
- Coordinating the public outreach and education effort for the District with the assistance of the CR NPDES Branch Manager.

Environmental Water Quality Specialist

The Environmental Division provides oversight and coordination activities on water quality issues throughout the life of the project from the Project Initiation Document phase through the Operation and Maintenance phase. In order to enhance project delivery and increase efficiency, the Environmental Water Quality Specialist (EWQS) will consult with the NPDES/Stormwater Branch on project activities which are related to the NPDES Permit, potential enforcement actions and stormwater quality issues. The EWQS will prepare or provide review and comment on the following sections:

- Water Quality of the Environmental Scoping document;
- Water Quality Reports to be included in environmental documents.

Maintenance Stormwater Coordinator

The Maintenance Stormwater Coordinator (MSWC) is responsible for communicating with the Deputy District Director of Maintenance and Maintenance Operation Team (MOT) regarding the proper implementation of maintenance-related sections of the SWMP and the DWP. The MSWC reports all stormwater-related maintenance activities to the Deputy District Director of Maintenance, coordinates stormwater training for maintenance staff as well as overseeing inspection of maintenance facilities and operations relative to Permit compliance. The MSWC is chairperson of the MOT that meets routinely to discuss water quality issues, updates the Maintenance portion of the DWP, and compiles information for the Annual Reports, as well as the SWMP. The MSWC serves as the conduit for information between the Deputy District Director of Maintenance, Headquarters Maintenance Program (especially Maintenance SWAT identified in the SWMP) and the maintenance field offices. The Maintenance Stormwater Coordinator may also be delegated the signatory authority on District stormwater documents, specifically the Stormwater Data Report.

Central Region Construction Stormwater Coordinator

The Central Region Construction Stormwater Coordinator (CR-CSWC) is responsible for establishing an effective stormwater program and is a liaison with Headquarters and District Construction Managers in Districts 5, 6, and 10 to maintain effective communication, collaboration, and coordination of stormwater activities. The CR-CSWC provides support, direction, and guidance to the District Construction Stormwater Coordinators (CSWC).

Construction Stormwater Coordinator

The CSWC, under the direction of their senior and the Construction Division Chief and with the assistance of the CR-CSWC, provide technical assistance to Resident Engineers relating to the Caltrans Statewide NPDES Permit and Caltrans Stormwater Guidance Handbooks. There are three basic functions divided between three CSWC personnel:

1. Caltrans' compliance with the construction stormwater requirements of its NPDES Permit, the Construction General Permit, and Caltrans Stormwater Manuals by coordinating with project staff during the Pre-Job meeting, reviewing stormwater data report submittals, and periodic review of construction sites as a representative of the District Construction Division Chief.

2. Reviewing a project's Construction Compliance Evaluation Plan (CCEP), reviewing CCEP Action Plans (if required), and coordinating the exchange of information between Headquarters Water Quality, Headquarters Construction, District and Regional Stormwater/NPDES Units as required.
3. Other specific tasks for which the CSWC coordinates with other Caltrans units include:
 - Serving as the focal point of contact with the District NPDES Stormwater Coordinators for all construction stormwater issues during the construction phase.
 - Identifying and coordinating stormwater training for Construction staff.
 - Working with the Central Region NPDES/Stormwater Unit, District NPDES Coordinator and various Project Engineers to review Stormwater Data Reports and ensure that project plans and specifications identify and adequately fund stormwater needs for each project.
 - Tracking critical compliance milestones that occur before and during the course of construction.
 - Assisting with final project closeout inspections for completion of NPDES/Stormwater components.
 - Assisting the Resident Engineer in the submittal of the Notice of Termination for SWPPP projects.
 - As requested, reviewing SWPPP/WPCP submittals.
 - Submitting reports as requested to the District or Regional NPDES Coordinator.
 - Reviewing and providing oversight of Caltrans SWPPP projects, and coordinating with the Construction Division Chief about project compliance matters.
 - Assisting Engineers with reporting Notices of Potential Incidents to the District NPDES Coordinator.
 - Assisting Engineers with Illicit Connection/Illegal Discharge (IC/ID) Reports for Construction to the District NPDES Coordinator and other units (Hazardous Materials Management or Hazardous Waste Management), as needed.
 - Representing Construction in the District SWAT meetings.
 - Providing input to the Annual Report.
 - Participating in the Construction SWAT defined in the SWMP.

The CSWC ensures that all enforcement actions or corrections requested by the Regional Boards are promptly implemented and documented. The CSWC also serves as the primary conduit for information during the construction phase for the District, Headquarters Construction, and construction field staff. In addition, the CSWCs supports the design-related functional units in determining specific project needs and evaluating the water pollution control measures in the field.

Right-of-Way Stormwater Coordinator

The Central Region Right-of-Way (ROW) Stormwater Coordinator serves District 5, 6, and 10 and is responsible for the following tasks:

- Attending all Stormwater Functional Team meetings to report on ROW activities.
- Ensuring that stormwater training is available to ROW staff with property inspection responsibilities.

- Ensuring that regular property inspections include stormwater inspections.
- Documenting the results of inspections and corrective actions.
- Preparing a summary of completed stormwater property inspections for use in Annual Reports.
- Disseminating information and answering questions regarding Caltrans stormwater policy to all ROW staff involved in stormwater inspections.
- Notifying the DSWC of discharges or situations that appear to be in violation of the Caltrans' NPDES Permit, SWMP or DWP.
- Reporting instances where ROW may conduct construction activities that require the development of a SWPPP and related notification.

Engineering Services (Hydraulics) Representative

The Engineering Services (Hydraulics) Representative (HR) is a member of the Functional Stormwater Committee responsible for providing information on permanent control measures, except those related to erosion control, which are being planned, designed, and implemented in projects. The HR ensures that the management and staff of the Hydraulics Branch are knowledgeable about the DWP, water pollution control efforts, and the requirements for minimizing or preventing pollutants from being present in discharges. The HR ensures that the design processes used by the Hydraulics Branch are consistent with the DWP and the SWMP, especially those processes related to the evaluation, selection, and design of permanent control and treatment control measures. The HR assists Hydraulics staff with preparation and review of the Rapid Stream Stability Assessment documentation for projects subject to that requirement under the new Caltrans NPDES Permit (Order 2012-011-DWQ).

Public Affairs Coordinator

The Public Information Officer (PIO) is a member of the Functional Stormwater Committee responsible for maintaining an effective public information program as specified in this DWP and any elements of the SWMP that are attributed to the District. The PIO Coordinator is directly responsible for the following:

- Distributing the District's stormwater pamphlet;
- Developing and distributing Public Service Announcements regarding stormwater; and
- Ensuring that stormwater information is available at public events, such as county fairs, for which Caltrans may be a participant.

Encroachment Permits Stormwater Coordinator

The Encroachment Permits Stormwater Coordinator (Permits Coordinator) is a member of the Stormwater Functional Team responsible for ensuring that the District's Office of Permits complies with the NPDES Permit, SWMP and DWP. The Office of Permits is responsible for issuing permits to local agencies, utility companies, and others (i.e., film production companies, marathon sponsors, etc.) that desire to encroach into Caltrans' ROW for construction, maintenance or other activities consistent with their organization. The Permits Coordinator ensures that all permits issued comply with the appropriate NPDES Permit in a manner consistent with the Maintenance, Construction, and Design requirements. The following are tasks performed by the Permits Coordinator:

- Reviewing ongoing Caltrans Encroachment Permit applications to determine whether Stormwater BMPs (design pollution prevention, permanent treatment, and temporary construction site BMPs), Permanent Erosion Control Plans, and Caltrans SWPPP or WPCP are provided.
- Working closely and having frequent dialog with Headquarters Encroachment Permits Office, District and Central Region NPDES, Central Region Construction, District Maintenance Stormwater Coordinators, as well as District Landscape Architect and Hydraulics Branches, on stormwater-related issues.
- Keeping track of all pending as well as issued District Encroachment Permit Projects that have stormwater related activities.
- Reviewing SWPPPs and WPCPs for compliance with the current Caltrans standards and to ensure their consistency and compliance with the Construction General Permit.
- Attending and participating in stormwater meetings conducted by Headquarters Encroachment Permits Office, District NPDES (Stormwater Functional Meetings), and Caltrans Headquarters CSWAT/EPswat committees.
- Submitting reports for either the Caltrans Stormwater Program or Headquarters Encroachment Permits Office.
- Assisting District Encroachment Permit Inspectors in resolving stormwater issues related to active or new District Encroachment Permit projects.
- Conducting stormwater field inspections of authorized District Encroachment Permit construction work.
- Documenting and submitting stormwater compliance inspections of authorized District Encroachment Permit projects into the statewide Encroachment Permits database.
- Contacting District Maintenance and NPDES coordinators if illicit connection/illegal discharge (IC/ID) activities or operations are discovered during stormwater compliance site inspections.
- Assisting NPDES Branch during IC/ID investigations.
- Assisting CSWAT/EPswat in updating stormwater guidance or training courses.
- Tracking and identifying stormwater training needs for the District Encroachment Permits staff.

Landscape Architecture Coordinator

The District's Landscape Architecture Office facilitates incorporating water pollution and erosion control recommendations into the planning, design, and construction of all projects in District 10. In addition, the District Landscape Architect provides field support to Construction, Maintenance, and Encroachment Permits when requested.

The specific stormwater tasks for which the Landscape Architect is responsible include the following:

- Determining and evaluating stormwater impacts during CEQA/NEPA screening.
- Evaluating and recommending permanent control and treatment control measures to address a project's stormwater impacts.
- Identifying costs related to water pollution and erosion control in program documents.
- Developing new specifications, details, and guidance materials related to erosion and sediment control.
- Preparing contract PS&E to address erosion and sediment controls for projects.

- Preparing or assisting in the preparation of the contract PS&E requiring permanent control and treatment control measures to improve or minimize water quality impacts on projects.
- Preparing, as required, a Revised Universal Soil Loss Equation, Version 2 (RUSLE2) report for use by Construction for terminating coverage under the Construction General Permit.
- Ensuring consistency with DTSC issued variances regarding re-use of lead contaminated soil through verification of slope stability and implementation of erosion control.
- Conducting studies to improve water quality objectives on highway planting projects.
- Assisting in the development of training programs, especially programs for Landscape Architecture staff.
- Participating in the Design SWAT identified in the SWMP.

The District Landscape Architect is a liaison with the Headquarters Landscape Architecture Program to develop, submit, review, and obtain approval for all specifications and details related to erosion and sediment control. The District Landscape Architect also coordinates with Headquarters' Design Program to obtain approval or concurrence on water pollution control specifications related to erosion and sediment control. Furthermore, the District Landscape Architect must approve slope designs steeper than 4:1 in order to ensure compliance with regulations addressing stormwater pollution contained in the federal CWA.

Table 2-1 lists staff members responsible for implementing the Stormwater Program.

Table 2-1: District 10 Stormwater Personnel and Responsibilities

Staff Name	Title	Phone No.	E-mail	Responsibility
Jim Espinosa	Central Region Environmental NPDES Stormwater Manager	(559) 243-8007	james_espinosa@dot.ca.gov	Primary contact for all stormwater issues. Oversees all NPDES office employees within the Central Region Districts (District 5, 6, and 10).
Ethan Heilman	District 10 NPDES Stormwater Coordinator	(209) 941-1918	ethan_heilman@dot.ca.gov	Contact for District 10 NPDES stormwater issues.
Javid Shenasi	District 10 Construction Stormwater Coordinator Approved Signatory and Data Submitter for CGP coverage	(559) 905-5501	javid.shenasi@dot.ca.gov	Contact for Construction-related stormwater issues during the construction phase of projects.
David Troop	District 10 Construction Stormwater Coordinator Approved Signatory and Data Submitter for CGP coverage	(209) 470-8795	david.troop@dot.ca.gov	Contact for Construction-related stormwater issues during the construction phase of projects.
Jonathan Fitzgerald	District 10 Construction Stormwater Coordinator Approved Signatory and Data Submitter for CGP coverage	(559) 930-9653	Jonathan.Fitzgerald@dot.ca.gov	Contact for Construction-related stormwater issues during the construction phase of projects.

Table 2-1: District 10 Stormwater Personnel and Responsibilities

Staff Name	Title	Phone No.	E-mail	Responsibility
Manuel Astacio	District 10 Maintenance Stormwater Coordinator	(209) 948-3724	Manual.Estacio@dot.ca.gov	Primary contact for maintenance-related stormwater issues.
Anthony Lertora	District 10 Maintenance Stormwater Coordinator	(209) 948-3725	Anthony.Lertora@dot.ca.gov	Primary contact for maintenance-related stormwater issues.
Dan Shafer	District 10 Encroachment Permits Stormwater Coordinator	(209) 948-7269	dan.shafer@dot.ca.gov	Primary contact for encroachment permit-related stormwater issues.
James Murrieta	Central Region Right-of-Way Stormwater Coordinator	(559) 445-6196	james.murrieta@dot.ca.gov	Primary contact for Right-of-Way demolition issues.
Sam Wong	Hydraulics Manager	(559) 243-3507	sam.wong@dot.ca.gov	Primary contact for hydraulic related issues.
Brad Cole	District 10 Landscape Architecture	(559) 230-3134	brad.cole@dot.ca.gov	Primary contact for all District 10 Landscape-related stormwater issues.
Michelle Molina Hernandez	Central Region Air Space Stormwater Coordinator	(559) 445-6248	michelle.molina-hernandez@dot.ca.gov	Primary contact for stormwater-related issues as it pertains to air-space leases.

Table 2-2 lists individuals authorized to sign the documents, reports, and other information submitted by the District to either the SWRCB and/or the RWQCB. These individuals may delegate authorization to their staff to sign various documents and reports required for implementation of the Stormwater Program. It also includes delegation of signatory authority for key Conformed NPDES Permit and SWMP required documents.

Table 2-2: District 10 Signatory Authority for Key Documents

Position or Individual	Phone No.	E-mail	Documents Authorized for Signatures
District Director	(209) 949-7943	dennis_agar@dot.ca.gov	All District Documents
Central Region Environmental NPDES SW Manager	(559) 243-8007	James Espinosa@dot.ca.gov	All District Documents except District Work Plan
District NPDES SWC	(209) 941-1918	Ethan Heilman@dot.ca.gov	As delegated by the Central Region NPDES SWC
Resident Engineer	Various	Various	SWPPP, Notice of Intent (NOI), Notice of Termination (NOT), Notice and Report of Non-Compliance, Discharge or threat of Discharge Notification, Incident Report Form
Encroachment Permits SWC	(209) 948-7269	dan.shafer@dot.ca.gov	SWPPPs, Notice and Report of Non-Compliance, Discharge or Threat of Discharge Notification, and Report of IC/ID
Hazardous Waste Coordinator	(559) 243-8157	juergen.vespermann@dot.ca.gov	Notice of Soil Reuse with Aerially Deposited Lead (ADL)

Table 2-2: District 10 Signatory Authority for Key Documents

Position or Individual	Phone No.	E-mail	Documents Authorized for Signatures
Maintenance SWC	(209) 948-3724	Manuel.Estacio@dot.ca.gov	Facility Pollution Prevention Plans (FPPP), Notice and Report of Non-Compliance, Discharge or Threat of Discharge Notification, and Report of Illicit Connection/Discharge
Maintenance SWC	(209) 948-3725	Anthony.Lertora@dot.ca.gov	Facility Pollution Prevention Plans (FPPP), SWDRs, Notice and Report of Non-Compliance, Discharge or Threat of Discharge Notification, and Report of Illicit Connection/Discharge

Figure 2-1 shows an organizational chart describing key personnel with responsibilities for stormwater operations within the District.

This page was intentionally left blank.

**CENTRAL REGION - DISTRICTS 5, 6 & 10
ORGANIZATIONAL CHART**

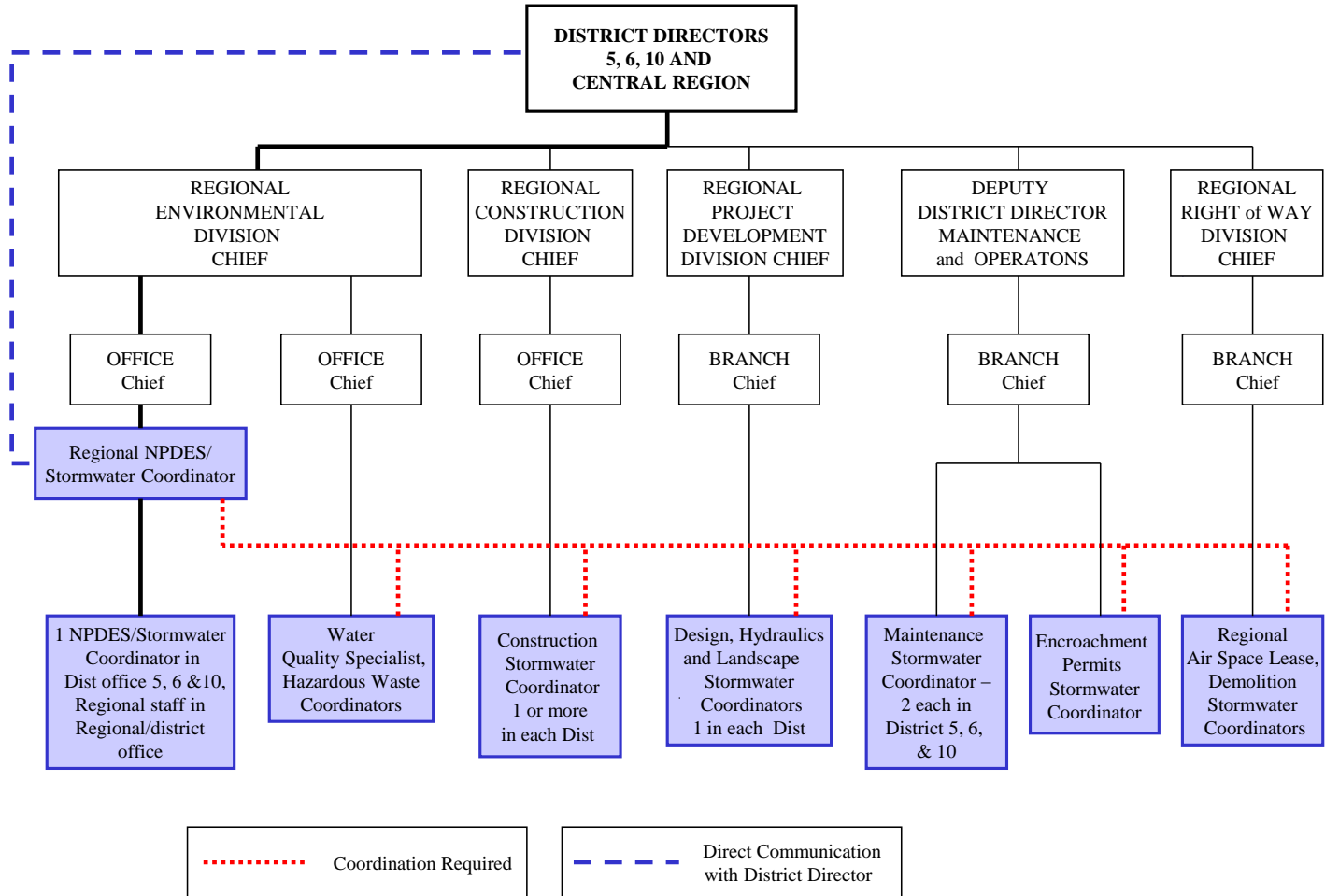


Figure 2-1: District 10 Organizational Chart

This page was intentionally left blank.

3 District Facilities and Water Bodies

Section 3 of the DWP identifies maintenance stations (including crew functions and street addresses), vista points, commercial vehicle enforcement areas, roadside rest areas, park and ride facilities, toll road and bridge plazas, equipment shops, and other Caltrans facilities. Facility Pollution Prevention Plans (FPPPs) are prepared and implemented at Maintenance facilities within the District's boundaries, such as maintenance stations, material storage facilities, and equipment shops. To comply with Department of Homeland Security policy, the table and map identifying these facilities is not available to the public. For more information, contact Caltrans' Office of Emergency Management or Division of Environmental Analysis.

This page was intentionally left blank.

4 Drinking Water Reservoirs and Recharge Facilities

Section 4 of the DWP identifies domestic water supply reservoirs or groundwater percolation facilities adjacent to or in close proximity to District-owned rights-of-way, roadways or other facilities. Spills, releases or drainage from District facilities into reservoirs or percolation facilities require an enhanced spill response from the District to prevent contamination.

To generate the list of municipal, domestic water supply reservoirs, and ground water percolation facilities, the District first contacted known public and private water supply providers. From the information received, the District determined which facilities were susceptible to a direct spill from a District activity or facility. This determination was based on proximity between the water body and the District's facility, use characteristics of the facility, and the probable spill response time.

When planning projects within these defined areas, District 10 considers project design features for aiding in the prevention of accidental spills that could impact the area. These features are typically safety improvements for reducing vehicle accidents. Examples of these features may include, but are not limited to, median barrier, guardrail, signalization, and vehicle restrictions. Features considered for improving spill response time typically include elongated drainage paths, call boxes, signage, or video surveillance.

A list of drinking water reservoirs and recharge facilities within District 10 is presented in Table 4-1.

Table 4-1: District 10 Drinking Water Reservoirs and Recharge Facilities

Road Segment/ Facility	County	Regional Board	Drinking Water Reservoir or Recharge Facility Area	Description	Comments
Route 152 PM 2.5/ 11.0	Merced	5	San Luis Reservoir/ O'Neill Forebay	The San Luis Reservoir/O'Neill Forebay provides a domestic water supply source for approximately 3,000 residents of the municipalities of Santa Nella and Dos Palos. The road segment is a heavily used trucking route and accidental spills have the potential to immediately impact the drinking water resource before response actions could be initiated.	No projects are planned within these facilities in the upcoming year.
Route 49 AMA – PM R0.142 CAL – PM 30.820/ 30.865	Amador, Calaveras	5	Pardee Reservoir	Pardee Reservoir is the main water supply reservoir, fed entirely by the Mokelumne River. Pardee Reservoir is located in Amador and Calaveras counties, just west of Highway 49. The Pardee Reservoir spillway is at elevation 568 feet. At high water, the reservoir begins approximately 1 mile downstream from the Highway 49 bridge.	East Bay Municipal Utility District (EBMUD) serves 1.3 million people in Alameda and Contra Costa counties. EBMUD is concerned an accidental spill near the Highway 49 Mokelumne River Bridge would discharge into the Mokelumne River which would flow directly and rapidly into Pardee Reservoir.

Table 4-1: District 10 Drinking Water Reservoirs and Recharge Facilities

Road Segment/ Facility	County	Regional Board	Drinking Water Reservoir or Recharge Facility Area	Description	Comments
Route 26 PM 30.000/ 30.23	Calaveras	5	Pardee Reservoir	Pardee Reservoir begins approximately 13 miles downstream from the Highway 26 bridge.	EBMUD is concerned an accidental spill near the Highway 26 South Fork Mokelumne River Bridge would discharge into the Mokelumne River which would flow into Pardee Reservoir.
Route 26 PM 33.601/ 33.627	Calaveras	5	Pardee Reservoir	Pardee Reservoir begins approximately 17 miles downstream from the Highway 26 bridge.	EBMUD is concerned an accidental spill near the Highway 26 Middle Fork Mokelumne River Bridge would discharge into the Mokelumne River which would flow into Pardee Reservoir.

5 Slopes Prone to Erosion

Section 5 of the DWP identifies the road segments within District 10 that have slopes which are prone to erosion and sediment discharge. The road segments that are located in sensitive watersheds, or where there is an existing or potential threat to water quality, will be prioritized for implementing appropriate controls to the maximum extent practicable. In each Annual Report, the status of stabilization activities where applicable will be reported. Table 5-1 is District 10's inventory of vulnerable road segments where erosion occurs and stabilization may be required or where rock cut slopes are located and rock falls have occurred.

Table 5-1: District 10 Inventory of Road Segments Prone to Erosion

Road Segment	County	Regional Board	Watershed	Scheduled Stabilization Date
Route 120	TUO	5	Tuolumne River	TBD
Route 140	MPA	5	Mariposa Creek	TBD
Route 049	CAL	5	Stanislaus River/Calaveras River/Mokelumne River	TBD
Route 026	CAL	5	Calaveras River/Mokelumne River	TBD

Figure 5-1 is a map showing California State Highway System areas that required maintenance within District 10 in 2016, including rock cut slopes, landslides, and moderate soil erosion.

This page was intentionally left blank.

Figure 5-1: District 10

California State Highway System 2016 Areas Prone to Erosion

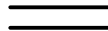



NOTE:

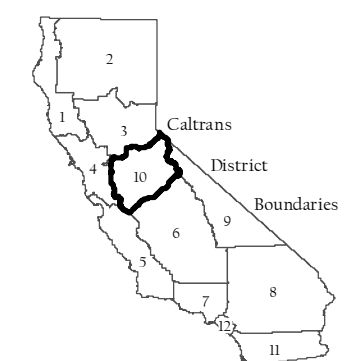
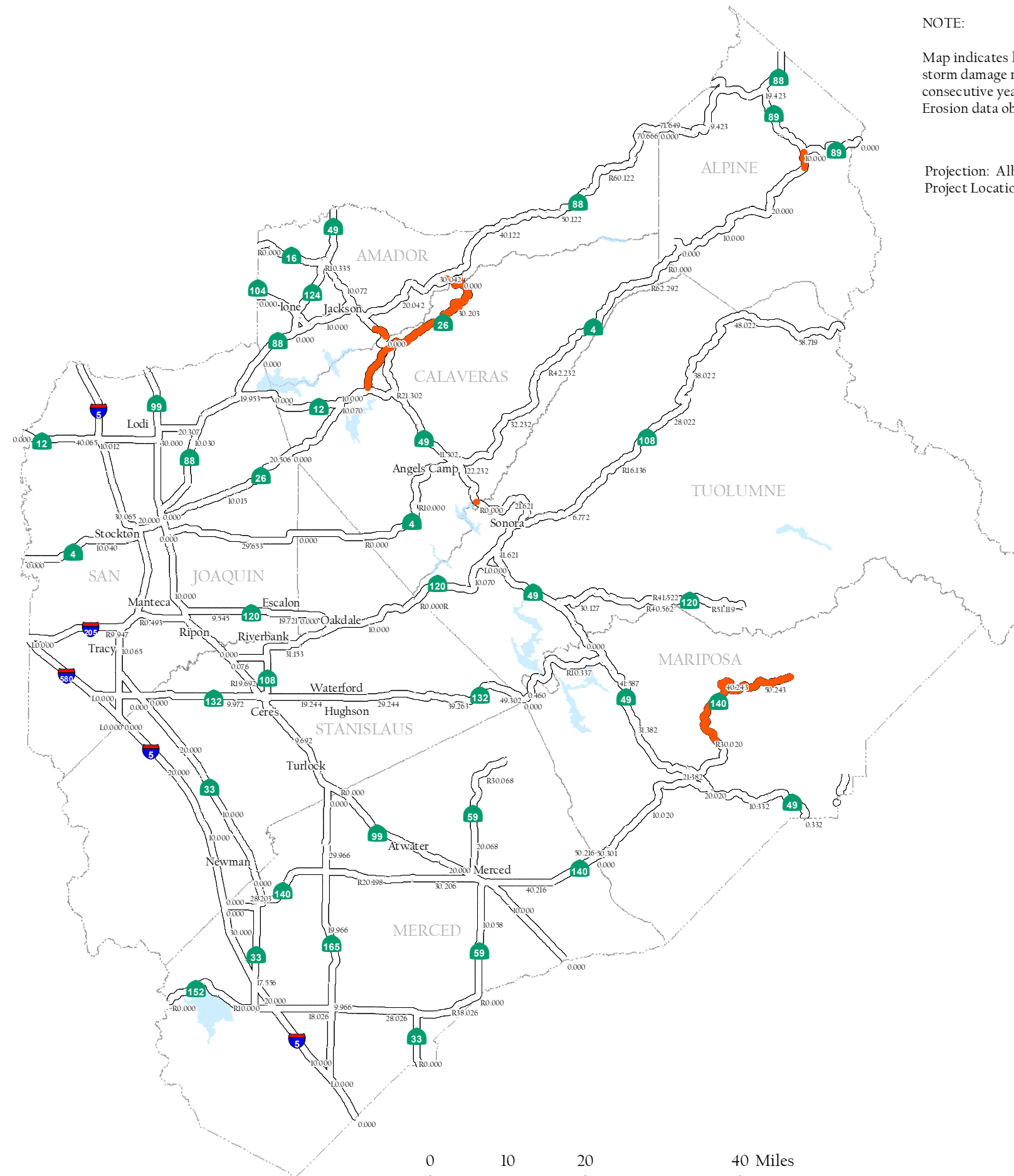
Map indicates locations of Major/Minor storm damage repair activities conducted on three (3) consecutive years by the Division of Maintenance. Erosion data obtained from IMMS.

MAP INFORMATION

Projection: Albers Meters NAD 83
Project Location: F:\gis\2016_Erosion_District10.mxd

Legend

-  State Highway
-  3 Yr. Consecutive Erosion
-  Water Feature
-  County Boundary



Areas Prone to Erosion

DIST	CO	RTE	PM
10	ALP	4	29.2/31.6
10	AMA	26	0.9/2.5
10	AMA	49	2.048/30.865
10	CAL	26	10.8/38.0
10	CAL	49	R0.1/R0.25
10	MPA	140	29.3/R43.8



This page was intentionally left blank.

6 Implementation

Section 6 of the DWP identifies the specific projects in which work is planned during the fiscal year within the Project Approval/Environmental Document (PA/ED), Plans, Specifications, and Estimates (PS&E), and Construction development phases. The anticipated schedule of construction and maintenance projects is subject to change. These projects are limited to those meeting any of the following criteria:

1. All projects that require soil disturbing activities
2. Adjacent to a Drinking Water or Ground Water Recharge Facility, as described in Section 4 of the DWP
3. A supplemental environmental project
4. Additional projects per agreement between the District and local RWQCB

Projects listed in Table 6-1 include (where applicable):

1. Location (county, route and post mile limits)
2. Project number (expense authorization)
3. Basic Project Description
4. Disturbed soil area
5. Presence of receiving waters within or adjacent to project limits, with special designation for 303(d) listed water bodies (adopted)
6. Drinking Water Reservoir or Ground Water Recharge Facility within or adjacent to project (as identified in Section 4 of the DWP)
7. Projected milestone dates of PA/ED, PS&E, begin Construction, and end Construction
8. Description of Construction Controls
9. Post-Construction Treatment Controls (types and quantities)
10. Dredge and fill (CWA-401) activities within the project
11. Other Regional Water Control Board Permits Required
12. Potential and Actual Impacts of Project's Discharge
13. Area of New Impervious Surface
14. Percentage of New Impervious Surface to Existing Impervious Surface

The updated lists of projects meeting these criteria will also be provided to the RWQCB annually on October 1st. In addition, this section identifies planned maintenance projects with soil disturbance. Information associated with the project includes location, affected water body, and area of disturbance. This section also describes the planned stormwater monitoring activities within the District; however, these activities may be conducted jointly with other Districts and HQ. Consequently, the information contained in a DWP may be repeated in another DWP.

This page was intentionally left blank.

Table 6-1: District 10 Anticipated Project Development and Construction Schedule

No.	EA	Project Location					Project Description ^{2,3}	Water Bodies Within or Adjacent to Project Limits ⁴	Dredge and Fill Activities (Y/N/NA) ⁵	Other Regional Water Board Permits Required ⁶	Potential and Actual Impacts of Project's Discharge ⁷	Disturbed Soil Area (acres)	Area of New Impervious Surface (acres)	Percentage of New Impervious Surface to Existing Impervious Surface	Description of Construction Controls (SWPPP/WPCP/TBD) ⁸	Post-Construction Treatment Control Type, Quantity ⁹	Anticipated Project Delivery Schedule		Construction Period	
		Co.	Route	Begin PM	End PM	RB ¹											PA&ED Date	PS&E Date	Start Date	End Date
1	10-0E491_	SJ	5	22.1	23.6	5	I-5 FRENCH CAMP LANDSCAPING - LANDSCAPING & MITIGATION - IN SAN JOAQUIN COUNTY ON I-5 FROM 0.4 MILES SOUTH TO 2 MILES NORTH OF THE FRENCH CAMP ROAD INTERCHANGE	French Camp Slough	-	-	No long term impacts anticipated	0	0	0	WPCP	E	N/A	8/30/16	2/1/17	5/29/20
2	10-0E530_	CAL	4	10.3	16.4	5	WAGON TRAIL REALIGNMENT - TWO LANE EXPRESSWAY - ON SR 4 FROM EAST OF COPPEROPOLIS TO APPROX 6.4 KM WEST OF CAL-4/ CAL-49 INTERSECTION IN ALTAVILLE (ANGELS CAMP) (KP16.5 /26.3)	Black Rascal Creek, Nassau Creek, Cherokee Creek	401	-	No long term impacts anticipated	155	27.2	TBD	SWPPP	C	9/16/16	10/1/17	3/1/18	5/1/20
3	10-0F280_	CAL	4	43.8	44.2	5	BIG TREES STATE PARK WALL - CONSTRUCT WALL FOR SEDIMENT CONTROL SHOULDERS FOR SEDIMENT CONTROL "BIG TREES SEDIMENT WALL" - IN CALAVERAS COUNTY ON STATE ROUTE (SR) 4 FROM 0.7 MILE WEST TO 0.2 MILE WEST OF THE BIG TREES STATE PARK ENTRANCE	Big Trees Creek	401	-	No long term impacts anticipated	2.9	1.3	59	SWPPP	C	1/23/15	4/11/16	9/28/16	10/12/17

¹ Regional Board

² Supplemental Environmental Projects designated as "SEP."

³ Projects adjacent to Drinking Water Reservoirs or Ground Water Recharge Facilities are noted (DW) and (GW), respectively.

⁴ Water bodies with designation for 303(d) designation are noted in parentheses.

⁵ If yes, a 401 permit will be required for this project. NA = Not Available at this time.

⁶ Regional Water Board Permits required other than Construction General Permit and Clean Water Act Section 401 water quality certification, such as Waiver of Discharge Requirements, Dewatering Permits, Bridge Painting WDRs, etc.

⁷ This information may come from the Water Quality Assessment Report prepared for each project, a Water Quality Technical Memorandum, or other document that evaluates the water quality impacts of a project.

⁸ A description of the Construction Controls is available in the project's Storm Water Pollution Prevention Plan (SWPPP), Water Pollution Control Plan (WPCP), or is To Be Determined (TBD) if the Disturbed Soil Area is unavailable.

⁹ Treatment Control Status identified by: device type/number of devices, exempt ("E"), or under consideration ("C"). See Treatment Control Status Legend below for device type abbreviations.

Table 6-1: District 10 Anticipated Project Development and Construction Schedule

No.	EA	Project Location					Project Description ^{2,3}	Water Bodies Within or Adjacent to Project Limits ⁴	Dredge and Fill Activities (Y/N/NA) ⁵	Other Regional Water Board Permits Required ⁶	Potential and Actual Impacts of Project's Discharge ⁷	Disturbed Soil Area (acres)	Area of New Impervious Surface (acres)	Percentage of New Impervious Surface to Existing Impervious Surface	Description of Construction Controls (SWPPP/WPCP/TBD) ⁸	Post-Construction Treatment Control Type, Quantity ⁹	Anticipated Project Delivery Schedule		Construction Period	
		Co.	Route	Begin PM	End PM	RB ¹											PA&ED Date	PS&E Date	Start Date	End Date
4	10-0G340_	MPA	140	22.1	25.3	5	MIDPINES CAPM - PAVEMENT REHABILITATION (CAPM) - NEAR MARIPOSA FROM THE NORTH JUNCTION OF STATE ROUTES 140 & 49 TO WHITLOCK ROAD	-	-	-	No long term impacts anticipated	0	0	0	WPCP	E	3/15/16	2/1/18	8/22/18	8/21/20
5	10-0G420_	STA	5	15.8	15.9	5	I-5 SPERRY ROAD IC - RECONSTRUCT EXISTING DIAMOND INTERCHANGE HAVING SINGLE-LN RAMPS. - IN STANISLAUS COUNTY NEAR PATTERSON ON INTERSTATE 5 AT SPERRY ROAD INTERCHANGE (KP 25.5)	TBD	TBD	TBD	TBD	TBD	TBD	TBD	SWPPP	TBD	3/14/18	-	-	-
6	10-0G550_	AMA	88	21.6	24.6	-	Pine Grove Improvements - IMPROVE OPERATION/BYPASS - ON STATE ROUTE 88 IN AMADOR COUNTY, IN THE VICINITY OF PINE GROVE FROM CLIMAX ROAD TO MT. ZION ROAD. (KP 36.2/38.4)	Jackson Creek	401	-	No long term impacts anticipated	31	4.7	22	SWPPP	C	2/26/16	10/8/19	1/17/22	1/15/24
7	10-0G720_	SJ	5	25.8	26.1	5	SR 4 / I-5 SEISMIC RETROFIT - SEISMIC RETROFIT OF VARIOUS BRIDGES - IN SAN JOAQUIN COUNTY IN STOCKTON AT VARIOUS BRIDGE LOCATIONS	Stockton Channel, Mormon Sough [303(d)]	-	-	No long term impacts anticipated	-	-	-	WPCP	E	6/13/13	3/15/17	9/20/17	11/1/18
8	10-0G800_	SJ	12	0.1	4.4	5	Bouldin Island Rehab - ROADWAY REHABILITATION - IN SAN JOAQUIN COUNTY NEAR TERMINOUS FROM MOKELUMNE RIVER BRIDGE TO LITTLE POTATO SLOUGH BRIDGE	Potato Slough [303(d)], Mokelumne River [303(d)]	401	-	No long term impacts anticipated	88	14.6	116	SWPPP	2-BS	2/2/10	12/28/12	8/30/13	12/26/17

Table 6-1: District 10 Anticipated Project Development and Construction Schedule

No.	EA	Project Location					Project Description ^{2,3}	Water Bodies Within or Adjacent to Project Limits ⁴	Dredge and Fill Activities (Y/N/NA) ⁵	Other Regional Water Board Permits Required ⁶	Potential and Actual Impacts of Project's Discharge ⁷	Disturbed Soil Area (acres)	Area of New Impervious Surface (acres)	Percentage of New Impervious Surface to Existing Impervious Surface	Description of Construction Controls (SWPPP/WPCP/TBD) ⁸	Post-Construction Treatment Control Type, Quantity ⁹	Anticipated Project Delivery Schedule		Construction Period	
		Co.	Route	Begin PM	End PM	RB ¹											PA&ED Date	PS&E Date	Start Date	End Date
9	10-0G820_	SJ	132	0.4	7.1	5	VERNALIS SR 132 REHAB - REPAIR PCC PAVEMENT - IN SAN JOAQUIN COUNTY NEAR VERNALIS FROM 0.4 MILES EAST OF ROUTE 580 TO STANISLAUS COUNTY LINE	Mountain House Creek	-	TBD	No long term impacts anticipated	19.5	0.23	0.5	SWPPP	E	1/20/15	12/15/15	7/5/16	7/3/17
10	10-0H480_	STA	108	33.1	33.4	5	Riverbank Slope Protection - SLOPE REPAIR - ON STATE ROUTE 108, AT VARIOUS LOCATIONS FROM EIGHTH ST TO TOPEKA ST NEAR THE CITY OF RIVERBANK IN STANISLAUS COUNTY	-	-	-	No long term impacts anticipated	-	-	-	WPCP	E	6/30/15	9/30/17	11/28/18	7/30/19
11	10-0H560_	SJ	26	13.3	13.8	5	SJ 26 WIDENING - PAVEMENT WIDENING - ON SR 26 IN SAN JOAQUIN COUNTY NEAR LINDEN BETWEEN E FINE ROAD AND ESCALON-BELLOTA	TBD	TBD	TBD	TBD	TBD	TBD	TBD	TBD	TBD	7/29/16	9/2/18	12/1/18	6/30/19
12	10-0H880_	SJ	205	9	9.6	5	CHRISMAN ROAD I/C - OVERSIGHT CONSTRUCT NEW 6 LANE FREEWAY - ON INTERSTATE 205 FROM 0.9 MILES EAST OF MACARTHUR DRIVE TO 2.9 MILES WEST OF INTERSTATE 5	Old River (San Joaquin River, Delta Medota Canal)	401	-	No long term impacts anticipated	50	15	-	SWPPP	C	7/29/16	3/5/19	9/25/19	9/25/21
13	10-0H890_	SJ	120	2.2	2.2	5	MCKINLEY AVENUE IC - OVERSIGHT TO CONSTRUCT NEW INTER- CHANGE - IN CITY OF MANTECA ON STATE ROUTE 120 FROM .5 MILE WEST TO .5 MILE EAST OF THE MCKINLEY AVENUE UNDERCROSSINGS	-	-	-	No long term impacts anticipated	55	11.5	130	SWPPP	E	11/26/14	1/10/19	4/1/19	9/1/21

Table 6-1: District 10 Anticipated Project Development and Construction Schedule

No.	EA	Project Location					Project Description ^{2,3}	Water Bodies Within or Adjacent to Project Limits ⁴	Dredge and Fill Activities (Y/N/NA) ⁵	Other Regional Water Board Permits Required ⁶	Potential and Actual Impacts of Project's Discharge ⁷	Disturbed Soil Area (acres)	Area of New Impervious Surface (acres)	Percentage of New Impervious Surface to Existing Impervious Surface	Description of Construction Controls (SWPPP/WPCP/TBD) ⁸	Post-Construction Treatment Control Type, Quantity ⁹	Anticipated Project Delivery Schedule		Construction Period	
		Co.	Route	Begin PM	End PM	RB ¹											PA&ED Date	PS&E Date	Start Date	End Date
14	10-0H910_	SJ	205	2.6	5.1	5	LAMMERS RD/ELEVENTH ST I/C – OVERSIGHT TO CONSTRUCT NEW INTERCHANGE – IN SAN JOAQUIN COUNTY IN AND NEAR TRACY FROM HANSEN ROAD OVERCROSSING TO GRANT LINE ROAD UNDERCROSSING (KP 3.8/R8.5)	Old River	401	1602	No long term impacts anticipated	107	30.7	49	SWPPP	E	11/7/12	6/14/16	11/18/16	11/30/18
15	10-0K021_	MER	99	15.8	17.3	5	WEST MERCED OVERHEAD LANDSCAPE – INSTALL ABOUT 220 TREES AND 800 GROUNDCOVER SHRUBS AND IRRIGATION SYSTEM – IN MERCED COUNTY IN MERCED ON STATE ROUTE 99 FROM NORTH OF V STREET TO BLACK RASCAL CANAL BRIDGE	-	-	-	No long term impacts anticipated	0.9	0	0	WPCP	E	7/23/12	3/14/14	9/8/14	11/17/18
16	10-0L020_	SJ	99	0	0.9	5	RIPON BRIDGE REHAB - BRIDGE REPLACEMENT - ON ROUTE 99 IN RIPON AT THE COUNTY LINE OF SAN JOAQUIN COUNTY AND Y STANISLAUS COUNTY AT THE STANISLAUS RIVER BRIDGES (29-0013 L/R)	Stanislaus River	401	TBD	No long term impacts anticipated	0.5	0	0	SWPPP	E	6/30/16	6/15/18	2/15/19	12/1/20
17	10-0L870_	STA	99	13.4	13.8	5	STANISLAUS AUXILIARY LANE - ADD AUXILIARY NB LANE HWY 99 - ON ROUTE NORTHBOUND 99 NEAR THE CITY OF MODESTO IN STANISLAUS CO BETWEEN HATCH ROAD OVERCROSSING AND SOUTH 9TH STREET OFF-RAMP (KP21.56/22.1)	Tuolumne River	-	-	No long term impacts anticipated	1.6	TBD	TBD	WPCP	E	2/1/18	6/1/20	11/16/20	6/30/21

Table 6-1: District 10 Anticipated Project Development and Construction Schedule

No.	EA	Project Location					Project Description ^{2,3}	Water Bodies Within or Adjacent to Project Limits ⁴	Dredge and Fill Activities (Y/N/NA) ⁵	Other Regional Water Board Permits Required ⁶	Potential and Actual Impacts of Project's Discharge ⁷	Disturbed Soil Area (acres)	Area of New Impervious Surface (acres)	Percentage of New Impervious Surface to Existing Impervious Surface	Description of Construction Controls (SWPPP/WPCP/TBD) ⁸	Post-Construction Treatment Control Type, Quantity ⁹	Anticipated Project Delivery Schedule		Construction Period	
		Co.	Route	Begin PM	End PM	RB ¹											PA&E Date	PS&E Date	Start Date	End Date
18	10-0L970_	TUO	120	19.4	20.0	5	Tuolumne River Bridge Rehab – REPLACE BRIDGE DECK – IN TUOLUMNE COUNTY ON STATE ROUTE 120 FROM 7.6 MILES EAST OF YOSEMITE JUNCTION TO 4.8 MILES WEST OF THE TOWN OF MOCCASIN AT TUOLUMNE RIVER/DON PEDRO RESERVOIR (JAMES E.	Don Pedro Reservoir	-	-	No long term impacts anticipated	2.4	0.01	6	SWPPP	E	11/3/11	6/26/15	3/3/16	12/29/17
19	10-0P200_	SJ	120	R3.4	R5.2	5	SR 120 / UNION ROAD - OVERSIGHT OF INTERCHANGE UPGRADE - IN SAN JOAQUIN COUNTY IN MANTECA ON STATE ROUTE 120 FROM 0.9 MILE WEST TO 0.9 MILE EAST OF UNION ROAD AND ON UNION ROAD FROM 0.2 MILE SOUTH OF STATE ROUTE 120 TO DANIELS	-	-	No long term impacts anticipated	34.2	7.2	26.7	SWPPP	E	6/17/10	5/30/17	8/7/17	8/6/19	
20	10-0P550_	SJ	132	0.81	-	5	DWR BRIDGE SEISMIC RETROFIT - SEISMIC RETROFIT OF ELEVEN BRIDGES - ON ROUTES 5, 132, 152, AND ROUTE 165 CROSSING CALIFORNIA AQUEDUCT AT VARIOUS LOCATIONS IN SAN JOAQUIN COUNTY	-	-	No long term impacts anticipated	5.8	0	0	SWPPP	E	12/15/15	10/20/17	4/27/18	12/29/19	
21	10-0P740_	MER	59	21.5	22.5	5	SR-59 LANDFILL ENTRANCE - OVERSIGHT OF NEW INTERSECTION CONSTRUCTION - IN MERCED COUNTY ON SR 59 AT LANDFILL EXIT (KP 34.4/36.0)	TBD	TBD	TBD	TBD	TBD	TBD	TBD	TBD	11/17/16	8/14/17	1/8/18	12/3/18	

Table 6-1: District 10 Anticipated Project Development and Construction Schedule

No.	EA	Project Location					Project Description ^{2,3}	Water Bodies Within or Adjacent to Project Limits ⁴	Dredge and Fill Activities (Y/N/NA) ⁵	Other Regional Water Board Permits Required ⁶	Potential and Actual Impacts of Project's Discharge ⁷	Disturbed Soil Area (acres)	Area of New Impervious Surface (acres)	Percentage of New Impervious Surface to Existing Impervious Surface	Description of Construction Controls (SWPPP/WPCP/TBD) ⁸	Post-Construction Treatment Control Type, Quantity ⁹	Anticipated Project Delivery Schedule		Construction Period	
		Co.	Route	Begin PM	End PM	RB ¹											PA&ED Date	PS&E Date	Start Date	End Date
22	10-0P840_	SJ	4	2.1	2.1	5	SR 4 ROCK SLOPE PROJECTION – ROCK SLOPE PROTECTION – IN SAN JOAQUIN COUNTY ON WESTBOUND SR 4 AT 1.3 MILES WEST OF MIDDLE RIVER BRIDGE	Middle River	401	-	No long term impacts anticipated	0.2	-	-	WPCP	E	1/19/16	8/1/17	3/1/18	10/1/18
23	10-0P921_	MPA	140	42	42.7	5	Ferguson Slide Rock Shed Construction – CLEAR LANDSLIDE – ON ROUTE 140 FROM 1.2 MILES WEST TO 0.5 MILES WEST OF SOUTH FORK MERCED RIVER BRIDGE	TBD	TBD	TBD	TBD	TBD	TBD	TBD	TBD	N/A	10/1/17	5/1/18	5/1/21	
24	10-0P922_	MPA	140	42	42.7	5	MARIPOSA TALUS REMOVAL - TALUS REMOVAL - IN MARIPOSA COUNTY IN MARIPOSA ON STATE ROUTE 140 NEAR EL PORTAL ROAD BRIDGE TO 0.5 MILES WEST OF SOUTH FORK MERCED RIVER BRIDGE	Merced River	-	-	No long term impacts anticipated	2.9	-	-	SWPPP	E	-	4/24/14	1/20/15	6/30/17
25	10-0Q121_	MER	99	R28.2	R37.3	5	NB LIVINGSTON MEDIAN WIDENING - LANE WIDENING FROM 4 TO 6 LANES - IN MERCED COUNTY IN LIVINGSTON ON STATE ROUTE 99 FROM 0.8 MILE SOUTH OF HAMMATT AVENUE TO MERCED/STANISLAUS COUNTY LINE.	TBD	TBD	TBD	TBD	TBD	TBD	TBD	TBD	6/2/14	7/19/17	2/21/18	8/22/19	
26	10-0Q122_	MER	99	R28.2	R37.3	5	SB LIVINGSTON MEDIAN WIDENING - LANE WIDENING FROM 4 TO 6 LANES - IN MERCED COUNTY IN LIVINGSTON ON STATE ROUTE 99 FROM 0.8 MILE SOUTH OF HAMMATT AVENUE TO MERCED/STANISLAUS COUNTY LINE (SOUTHBOUND)	TBD	TBD	TBD	TBD	TBD	TBD	TBD	TBD	6/2/14	3/15/17	9/27/17	7/10/19	

Table 6-1: District 10 Anticipated Project Development and Construction Schedule

No.	EA	Project Location					Project Description ^{2,3}	Water Bodies Within or Adjacent to Project Limits ⁴	Dredge and Fill Activities (Y/N/NA) ⁵	Other Regional Water Board Permits Required ⁶	Potential and Actual Impacts of Project's Discharge ⁷	Disturbed Soil Area (acres)	Area of New Impervious Surface (acres)	Percentage of New Impervious Surface to Existing Impervious Surface	Description of Construction Controls (SWPPP/WPCP/TBD) ⁸	Post-Construction Treatment Control Type, Quantity ⁹	Anticipated Project Delivery Schedule		Construction Period	
		Co.	Route	Begin PM	End PM	RB ¹											PA&ED Date	PS&E Date	Start Date	End Date
27	10-0Q160_	SJ	99	1.7	5.8	5	MILGEO AVENUE CAPM – DIGOUT AND REPAIR OF LOCALIZED FAILURES/AC OVERLAY – IN SAN JOAQUIN COUNTY IN RIPON ON STATE ROUTE 99 FROM MILGEO AVENUE TO STATE ROUTE 120	-	-	-	No long term impacts anticipated	0.2	0	0	WPCP	E	8/13/15	5/4/16	1/5/17	12/30/17
28	10-0Q17U_	SJ	132	0.2	-	5	SR580 CAPM ROADWAY REHAB & ITS ELEMENTS - DIGOUT AND REPAIR OF LOCALIZED FAILURES / AC OVERLAY / WIDEN SHOULDER / INSTALL RWIS - IN SAN JOAQUIN COUNTY NEAR TRACEY FROM STANISLAUS COUNTY LINE TO ALAMEDA COUNTY LINE	Merced River [303(d)]	-	-	No long term impacts anticipated	2.9	-	-	SWPPP	E	5/4/15	6/3/15	3/1/16	10/1/17
29	10-0Q180_	SJ	88	16.4	25.4	5	CLEMENTS CAPM – DIGOUT AND REPAIR OF LOCALIZED FAILURES/AC OVERLAY – IN SAN JOAQUIN COUNTY NEAR CLEMENTS ON STATE ROUTE 88 FROM STATE ROUTE 12 TO THE AMADOR COUNTY LINE	TBD	TBD	TBD	TBD	TBD	TBD	TBD	TBD	TBD	9/15/16	1/15/18	7/18/18	6/18/19
30	10-0Q290_	MER	165	29.8	30.3	5	WESTSIDE BLVD CURVE CORRECTION - IMPROVE CURVE RADIUS, SUPERELEVATION, WIDEN SHOULDER, INSTALL RUMBLE STRIP - IN MERCED COUNTY NORTH OF LOS BANOS ON STATE ROUTE 165 BETWEEN MERCED RIVER BRIDGE (#39-217) AND 0.2 MILES SOUTH OF WESTSIDE BOULEVARD	Merced River [303(d)]	-	-	No long term impacts anticipated	7.5	3.1	4	SWPPP	E	7/12/13	3/28/16	10/6/16	10/6/17

Table 6-1: District 10 Anticipated Project Development and Construction Schedule

No.	EA	Project Location					Project Description ^{2,3}	Water Bodies Within or Adjacent to Project Limits ⁴	Dredge and Fill Activities (Y/N/NA) ⁵	Other Regional Water Board Permits Required ⁶	Potential and Actual Impacts of Project's Discharge ⁷	Disturbed Soil Area (acres)	Area of New Impervious Surface (acres)	Percentage of New Impervious Surface to Existing Impervious Surface	Description of Construction Controls (SWPPP/WPCP/TBD) ⁸	Post-Construction Treatment Control Type, Quantity ⁹	Anticipated Project Delivery Schedule		Construction Period	
		Co.	Route	Begin PM	End PM	RB ¹											PA&ED Date	PS&E Date	Start Date	End Date
31	10-0Q880_	AMA	49	17	17.5	5	SR 49 & MAIN ST IMPROVEMENTS – INTERSECTION IMPROVEMENTS – IN AMADOR COUNTY IN THE CITY OF PLYMOUTH ON SR 49 AT THE INTERSECTION OF MAIN STREET ** OVERSIGHT ONLY FOR PROJECT ADMINISTERED BY CITY OF PLYMOUTH**	Cosumnes River	401	-	No long term impacts anticipated	5.3	0.72	23	SWPPP	C	10/25/13	6/1/16	12/1/16	1/2/18
32	10-0S110_	SJ	4	0	-	5	SR 4 CROSSTOWN RAMP EXTENSION – EXTEND FREEWAY – ON STATE ROUTE 4 BETWEEN GARFIELD	Delta Waterways (Eastern Portion) [303(d)], Mormon Slough [303(d)]	-	-	No long term impacts anticipated	27.4	8.6	80	SWPPP	2- BS	10/20/10	5/29/13	1/6/14	10/5/17
33	10-0S680_	ALP	4	16.6	31.1	5	ALPINE CULVERT REHAB – CULVERT REHABILITATION – IN ALPINE AND AMADOR COUNTIES ON VARIOUS STATE ROUTE LOCATIONS	-	-	-	No long term impacts anticipated	0.13	0	0	WPCP	E	4/4/16	1/2/18	8/1/18	12/31/18
34	10-0S740_	SJ	88	13.5	14.1	5	SJ/ALP 88 DRAINAGE SYSTEM – REPLACE CULVERTS – ON STATE ROUTE 88 IN SAN JOAQUIN CO FROM PM 13.5-14.1 IN THE CITY OF LOCKEFORD AND ON STATE ROUTE 88 IN ALPINE CO FROM PM 0.28-2.56 NEAR THE CITY OF ALPINE/AMADOR CO LINE	Kirkwood Creek, Caples Creek	401	-	TBD	1.2	0	0	WPCP	E	1/21/18	6/9/20	11/10/20	7/31/21
35	10-0S800_	STA	108	27.5	45.5	5	NORTH COUNTY CORRIDOR - EXPRESSWAY ON NEW ALIGNMENT - IN STA CO, ON NEW ALIGNMENT FROM SR 99 NORTH OF THE CITY OF MODESTO TO SR 120 EAST OF THE CITY OF OAKDALE	Dry Creek, Cashman Creek, Wood Cutter Creek, Stanislaus River [303(d)]	401	-	No long term impacts anticipated	>100	TBD	TBD	SWPPP	C	3/15/17	7/12/19	2/26/20	12/1/22

Table 6-1: District 10 Anticipated Project Development and Construction Schedule

No.	EA	Project Location					Project Description ^{2,3}	Water Bodies Within or Adjacent to Project Limits ⁴	Dredge and Fill Activities (Y/N/NA) ⁵	Other Regional Water Board Permits Required ⁶	Potential and Actual Impacts of Project's Discharge ⁷	Disturbed Soil Area (acres)	Area of New Impervious Surface (acres)	Percentage of New Impervious Surface to Existing Impervious Surface	Description of Construction Controls (SWPPP/WPCP/TBD) ⁸	Post-Construction Treatment Control Type, Quantity ⁹	Anticipated Project Delivery Schedule		Construction Period	
		Co.	Route	Begin PM	End PM	RB ¹											PA&ED Date	PS&E Date	Start Date	End Date
36	10-0T780_	STA	132	1.1	1.8	5	KASSON ROAD SIGNAL – TRAFFIC SIGNAL AND WIDENING – ON ROUTE 132 AT INTERSECTION OF SR 132 (MAZE BLVD) AND KASSON RD/ RIVER RD	-	TBD	-	No long term impacts anticipated	2.5	6.5	68	SWPPP	E	9/11/13	6/15/16	1/11/17	9/1/18
37	10-0T910_	STA	99	4.3	5	5	FULKERTH IC IMPROVEMENTS – INTERCHANGE IMPROVEMENTS – IN STANISLAUS COUNTY IN THE CITY OF TURLOCK ON SR 99 AT FULKERTH ROAD **OVERSIGHT ONLY TO THE CITY OF TURLOCK**	-	-	-	No long term impacts anticipated	22.8	2.6	TBD	SWPPP	E	5/7/14	9/1/16	2/1/17	11/30/18
38	10-0U290_	MER	165	35.6	36.1	5	FOWLER AVE LEFT TURN – INSTALL LEFT TURN CHANNELIZATION – IN MERCED COUNTY NEAR TURLOCK ON STATE ROUTE 165 AT FOWLER AVENUE	-	-	-	No long term impacts anticipated	4.9	3.8	80	SWPPP	E	3/29/13	5/3/16	11/1/16	10/31/17
39	10-0U520_	MER	59	12.8	13.5	5	MISSION AVE LEFT TURN – INSTALL LEFT TURN CHANNELIZATION – IN MERCED COUNTY ABOUT 2 MILES SOUTH OF MERCED ON STATE ROUTE 59 FROM 0.33 MILE SOUTH TO 0.37 MILE NORTH OF MISSION AVE/DICKENSEON FERRY ROAD	-	-	-	No long term impacts anticipated	3.26	1.52	140	WPCP Erosivity Waiver	E	6/27/14	12/16/16	6/1/17	9/28/18
40	10-0V070_	MER	99	0	18.6	5	HIGH SPEED RAIL MERCED TO FRESNO - HIGH SPEED TRAIN SYSTEM - ON STATE ROUTE 99 IN MERCED COUNTY (PM 0.0/18.6)	TBD	TBD	TBD	TBD	TBD	TBD	TBD	WPCP	TBD	5/20/12	1/22/19	-	-

Table 6-1: District 10 Anticipated Project Development and Construction Schedule

No.	EA	Project Location					Project Description ^{2,3}	Water Bodies Within or Adjacent to Project Limits ⁴	Dredge and Fill Activities (Y/N/NA) ⁵	Other Regional Water Board Permits Required ⁶	Potential and Actual Impacts of Project's Discharge ⁷	Disturbed Soil Area (acres)	Area of New Impervious Surface (acres)	Percentage of New Impervious Surface to Existing Impervious Surface	Description of Construction Controls (SWPPP/WPCP/TBD) ⁸	Post-Construction Treatment Control Type, Quantity ⁹	Anticipated Project Delivery Schedule		Construction Period	
		Co.	Route	Begin PM	End PM	RB ¹											PA&ED Date	PS&E Date	Start Date	End Date
41	10-0V300_	CAL	4	29.6	-	5	CAL & MPA ADA Curb Ramps - PEDESTRIAN ACCESSIBILITY IMPROVEMENTS - IN CALAVERAS COUNTY IN MURPHYS AT BIG TREES ROAD AND IN MARIPOSA COUNTY ON STATE ROUTES 49 AND 140	-	-	-	No long term impacts anticipated	0.8	0	TBD	WPCP	E	8/25/14	5/16/16	10/1/16	7/1/17
42	10-0V620_	CAL	26	8.3	8.6	5	VISTA DEL LAGO SIGNAL - SIGNALIZATION AND CHANNELIZATION - IN CALAVERAS COUNTY NEAR VALLEY SPRINGS FROM 0.7 MILE EAST OF SILVER RAPIDS ROAD TO QUAIL OAKS ROAD	Cosgrove Creek	401	-	No long term impacts anticipated	0.47	0.47	100	WPCP	E	3/17/14	5/19/16	10/10/16	12/29/17
43	10-0W350_	MER	140	5.6	5.6	5	GUSTINE ROUNDABOUT - CONSTRUCT ROUNDABOUT - IN MERCED COUNTY STATE ROUTE 140/33 PM 5.3	TBD	TBD	TBD	TBD	TBD	TBD	TBD	TBD	TBD	6/30/16	3/1/17	7/3/17	1/16/18
44	10-0W620_	MER	5	0.4	0.9	5	ERRECA REST AREA REHAB - REPLACE PUBLIC WATER SYSTEM AND ONSITE WASTEWATER TREATMENT SYSTEM - IN MERCED COUNTY NEAR FIREBAUGH ON I-5 AT THE JOHN "CHUCK" ERRECA ROADSIDE REST AREA, BOTH NORTHBOUND AND SOUTHBOUND LOCATIONS	TBD	-	TBD	TBD	2.47	0.02	TBD	TBD	TBD	2/1/16	4/1/18	11/2/18	10/2/19

Table 6-1: District 10 Anticipated Project Development and Construction Schedule

No.	EA	Project Location					Project Description ^{2,3}	Water Bodies Within or Adjacent to Project Limits ⁴	Dredge and Fill Activities (Y/N/NA) ⁵	Other Regional Water Board Permits Required ⁶	Potential and Actual Impacts of Project's Discharge ⁷	Disturbed Soil Area (acres)	Area of New Impervious Surface (acres)	Percentage of New Impervious Surface to Existing Impervious Surface	Description of Construction Controls (SWPPP/WPCP/TBD) ⁸	Post-Construction Treatment Control Type, Quantity ⁹	Anticipated Project Delivery Schedule		Construction Period	
		Co.	Route	Begin PM	End PM	RB ¹											PA&ED Date	PS&E Date	Start Date	End Date
45	10-0W630_	STA	5	27	27.5	5	WESTLEY REST AREA REHAB - REPLACE PUBLIC WATER SYSTEM AND ONSITE WASTEWATER TREATMENTS SYSTEMS - IN STANISLAUS COUNTY ON I-5 AT THE WESTLEY ROADSIDE REST AREA, BOTH NORTH-BOUND AND SOUTH-BOUND LOCATIONS	-	TBD	-	No long term impacts anticipated	2	0	0	SWPPP	E	6/30/15	8/1/18	2/15/19	12/30/20
46	10-0W900_	STA	132	0	-	5	STA 108 & 132 ADA RAMPS - ADA UPGRADES - IN STANISLAUS COUNTY AT RIVERBANK ON ROUTE 108 FROM 1ST ST TO 4TH ST AND IN STANISLAUS COUNTY AT MODESTO ON ROUTE 132 AT S. SANTA ROSA AVE, DALY AVE & G ST	Stanislaus River [303(d)]	-	-	No long term impacts anticipated	0.01	-	-	WPCP	E	9/30/15	1/22/18	7/2/18	12/30/18
47	10-0X310_	SJ	4	17.2	17.2	5	SJ 4/99 BRIDGE REHAB - REPLACE BRIDGE - IN SAN JOAQUIN COUNTY IN AND NEAR STOCKTON ALONG ROUTE 99 ON ROUTE 4 AT PM 19.75 FARMINGTON ROAD OC AND ON ROUTE 26 AT PM 1.11 FREEMONT STREET OC	TBD	TBD	TBD	TBD	TBD	TBD	TBD	TBD	TBD	1/2/18	1/29/20	6/15/20	12/30/21
48	10-0X460_	SJ	5	26.5	26.5	5	STOCKTON CHANNEL VIADUCT BRIDGE REHAB - BRIDGE REHABILITATION - IN SAN JOAQUIN COUNTY IN STOCKTON (STOCKTON CHANNEL VIADUCT BR. NO. 29-0176 L/R)	Stockton Ship Channel	-	-	No long term impacts anticipated	2	TBD	TBD	WPCP	E	3/20/20	10/21/19	5/5/20	-

Table 6-1: District 10 Anticipated Project Development and Construction Schedule

No.	EA	Project Location					Project Description ^{2,3}	Water Bodies Within or Adjacent to Project Limits ⁴	Dredge and Fill Activities (Y/N/NA) ⁵	Other Regional Water Board Permits Required ⁶	Potential and Actual Impacts of Project's Discharge ⁷	Disturbed Soil Area (acres)	Area of New Impervious Surface (acres)	Percentage of New Impervious Surface to Existing Impervious Surface	Description of Construction Controls (SWPPP/WPCP/TBD) ⁸	Post-Construction Treatment Control Type, Quantity ⁹	Anticipated Project Delivery Schedule		Construction Period	
		Co.	Route	Begin PM	End PM	RB ¹											PA&ED Date	PS&E Date	Start Date	End Date
49	10-0X520_	SJ	5	29	-	5	SJ-5, 99 & MER-165 ADA INFRASTRUCTURE – PEDESTRIAN INFRASTRUCTURE – IN SAN JOAQUIN AND MERCED COUNTIES AT VARIOUS LOCATIONS	-	-	-	No long term impacts anticipated	1.5	1.5	TBD	WPCP	E	12/30/16	11/11/19	5/11/20	12/30/20
50	10-0X560_	STA	99	18.7	-	5	STA 99/CARPENTER RD SB RAMPS - RECONSTRUCT RAMP AND INSTALL RIGHT TURN LANE - IN STANISLAUS COUNTY IN MODESTO ON STATE ROUTE 99 AT CARPENTER ROAD/ BRIGGSMORE AVENUE SOUTHBOUND OFFRAMP	-	-	-	No long term impacts anticipated	8.26	2	TBD	SWPPP	C	9/1/15	6/3/16	12/2/16	2/24/18
51	10-0X630_	MER	99	15.1	16	5	MER 99 ROADSIDE IMPROVEMENTS - PLACE VEHICLE PULLOUTS, STAIR CASES, AND WEED BARRIER, REGRADE SLOPE - IN MERCED COUNTY IN MERCED ON STATE ROUTE 99 FROM 0.1 MILE SOUTH OF R STREET TO 0.1 MILE NORTH OF STATE ROUTE 140 SEPARATION	-	-	-	No long term impacts anticipated	2	0.3	0	WPCP	E	1/9/15	1/8/16	8/15/16	12/1/17
52	10-0X640_	SJ	4	18.5	20.3	5	SJ 99 MAINTENANCE PULLOUTS – ROADSIDE SAFETY IMPROVEMENTS – ON SR 4 IN SAN JOAQUIN CO FM PM 18. 5 TO PM20.3 IN THE CITY OF STOCKTON AND ON SR 99 IN SAN JOAQUIN CO FM PM 15.5 TO PM 26.2 IN STOCKTON AND PM 29.3 TO PM 33.7 IN CITY OF LODI	-	-	-	TBD	0.89	0.89	TBD	SWPPP	TBD	8/21/15	4/7/16	11/15/16	7/1/17

Table 6-1: District 10 Anticipated Project Development and Construction Schedule

No.	EA	Project Location					Project Description ^{2,3}	Water Bodies Within or Adjacent to Project Limits ⁴	Dredge and Fill Activities (Y/N/NA) ⁵	Other Regional Water Board Permits Required ⁶	Potential and Actual Impacts of Project's Discharge ⁷	Disturbed Soil Area (acres)	Area of New Impervious Surface (acres)	Percentage of New Impervious Surface to Existing Impervious Surface	Description of Construction Controls (SWPPP/WPCP/TBD) ⁸	Post-Construction Treatment Control Type, Quantity ⁹	Anticipated Project Delivery Schedule		Construction Period	
		Co.	Route	Begin PM	End PM	RB ¹											PA&ED Date	PS&E Date	Start Date	End Date
53	10-0X660_	STA	99	R3.2	R5.9	5	STA 99 MVP/EXTENDED GORES/SLOPE PAVING - ROADSIDE SAFETY IMPROVEMENTS - IN AND NEAR TURLOCK FROM WEST TURLOCK OH TO 0.3 MI NORTH OF MONTE VISTA AVENUE UC	-	TBD	TBD	TBD	0.18	0.2	TBD	WPCP	TBD	7/7/17	7/31/18	1/23/19	12/31/19
54	10-0X670_	STA	99	13.8	17.6	-	STA SR 99 MAINTENANCE WORKER SAFETY IMPROVEMENTS - ROADSIDE SAFETY IMPROVEMENTS - IN MODESTO FROM 0.1 MI SOUTH OF SOUTH MODESTO UNDERCROSSING TO 0.1 MI NORTH OF WOODLAND AVE OVERCROSSING	TBD	TBD	TBD	No long term impacts anticipated	0.9	0.92	TBD	WPCP	E	3/1/19	10/1/19	4/15/20	12/1/20
55	10-0X690_	SJ	4	15.7	19.2	5	SR4 MVP & ROADSIDE PAVING - ROADSIDE SAFETY IMPROVEMENTS - IN SAN JOAQUIN COUNTY IN STOCKTON AT VARIOUS LOCATIONS	Mormon Slough [303(d)], Delta Waterways	TBD	-	No long term impacts anticipated	2.5	2.12	TBD	WPCP	E	7/17/18	1/15/20	7/22/20	7/5/21
56	10-0X700_	SJ	205	2.3	R9.7	5	SR205 MVP & ROADSIDE PAVING - ROADSIDE SAFETY IMPROVEMENTS - IN AND NEAR TRACY FROM 0.3 MI/WEST OF PATTERSON PASS OC TO E205-N5 CONNECTOR SEPARATION	TBD	TBD	TBD	TBD	TBD	TBD	TBD	SWPPP	TBD	9/7/18	11/1/19	5/6/20	3/1/21
57	10-0X710_	SJ	120	R2.6	T7.2	5	SR120 MVP & ROADSIDE PAVING - ROADSIDE SAFETY IMPROVEMENTS - IN AND NEAR MANTECA FROM 0.3 MI EAST OF MCKINLEY AVE OC TO SR 99/120 SEPARATION	-	-	-	No long term impacts anticipated	1	1.2	TBD	SWPPP	E	1/3/18	1/29/19	7/2/19	7/1/20

Table 6-1: District 10 Anticipated Project Development and Construction Schedule

No.	EA	Project Location					Project Description ^{2,3}	Water Bodies Within or Adjacent to Project Limits ⁴	Dredge and Fill Activities (Y/N/NA) ⁵	Other Regional Water Board Permits Required ⁶	Potential and Actual Impacts of Project's Discharge ⁷	Disturbed Soil Area (acres)	Area of New Impervious Surface (acres)	Percentage of New Impervious Surface to Existing Impervious Surface	Description of Construction Controls (SWPPP/WPCP/TBD) ⁸	Post-Construction Treatment Control Type, Quantity ⁹	Anticipated Project Delivery Schedule		Construction Period	
		Co.	Route	Begin PM	End PM	RB ¹											PA&ED Date	PS&E Date	Start Date	End Date
58	10-0X720_	SJ	5	R16.1	35.7	5	SJ I-5 MVP & ROADSIDE PAVING - ROADSIDE PAVING, MVP'S AND ACCESS GATE CONSTRUCTION - IN SAN JOAQUIN COUNTY INSTALL GORE PAVING AT 34 LOCATIONS AND MAINTAIN VEHICLE PULLOUTS AT 28 LOCATIONS	various	-	-	No long term impacts anticipated	0.85	0.85	TBD	WPCP	E	9/7/17	10/18/19	4/22/19	11/4/19
59	10-0X730_	AMA	49	3.7	4	5	SOUTH AVENUE BRIDGE - OVERSIGHT OF BRIDGE REPLACEMENT - IN AMADOR COUNTY IN THE CITY OF JACKSON ON STATE ROUTE 49 AT SOUTH AVENUE BRIDGE (NO. 26C0004)	TBD	TBD	TBD	TBD	TBD	TBD	TBD	TBD	TBD	6/7/17	2/25/21	8/9/21	8/21/23
60	10-0X750_	ALP	4,88,89	various	-	5	MOUNTAIN COUNTIES BRIDGE RAILS - BRIDGE RAIL UPGRADE - IN ALPINE COUNTY SEISMIC RETROFIT PROJECT FOR FOUR BRIDGES AT VARIOUS LOCATIONS	various	-	-	No long term impacts anticipated	0.01	0.01	TBD	WPCP	E	3/2/18	7/17/20	9/8/20	8/9/22
61	10-0X751_	CAL	-	-	-	5	Upgrade bridge rails of three bridges - UPGRADE BRIDGE RAILS - IN CALAVERAS COUNTY ON STATE ROUTE 4 AND STATE ROUTE 26 AT ANGELS CREEK, N. FORK MOKELUMNE R. AND S. FORK MOKELUMNE R.	TBD	TBD	TBD	TBD	TBD	TBD	TBD	TBD	TBD	8/1/20	8/1/21	1/2/22	1/3/24
62	10-0X970_	SJ	4	16	19.4	5	Crosstown AWS - INSTALL AUTOMATED WARNING SYSTEM - IN SAN JOAQUIN COUNTY IN STOCKTON ON STATE ROUTE 4 FROM I-5 TO STATE ROUTE 99	-	-	-	No long term impacts anticipated	0.41	0.16	-	WPCP	E	11/25/14	5/29/15	12/14/15	12/30/16

Table 6-1: District 10 Anticipated Project Development and Construction Schedule

No.	EA	Project Location					Project Description ^{2,3}	Water Bodies Within or Adjacent to Project Limits ⁴	Dredge and Fill Activities (Y/N/NA) ⁵	Other Regional Water Board Permits Required ⁶	Potential and Actual Impacts of Project's Discharge ⁷	Disturbed Soil Area (acres)	Area of New Impervious Surface (acres)	Percentage of New Impervious Surface to Existing Impervious Surface	Description of Construction Controls (SWPPP/WPCP/TBD) ⁸	Post-Construction Treatment Control Type, Quantity ⁹	Anticipated Project Delivery Schedule		Construction Period	
		Co.	Route	Begin PM	End PM	RB ¹											PA&E Date	PS&E Date	Start Date	End Date
63	10-0Y100_	STA	99	11.7	15	5	STA 99 LIGHTING – INSTALL HIGH MAST LIGHTING – IN STANISLAUS COUNTY IN AND NEAR MODESTO FROM 0.1 MILE NORTH OF NORTH STREET UNDERCROSSING TO TUOLUMNE BRIDGE	-	-	-	No long term impacts anticipated	0.5	0.02	-	WPCP	E	6/15/15	10/9/15	3/28/16	12/30/16
64	10-0Y110_	MER	140	0	42.1	5	MER 140 GUARDRAIL UPGRADE – UPGRADE GUARDRAIL, TERMINAL SYSTEM AND END TREATMENTS – IN MERCED COUNTY NEAR GUSTINE ON STATE ROUTE 140 FROM I-5 TO ABOUT 6 MILES EAST OF MERCED AT VARIOUS LOCATIONS	Delta Mendota Canal, West Branch Mud Slough, Mud Slough Overflow, North Branch Mud Slough [303(d)], San Joaquin River [303(d)], East Side Irrigation Canal, Black Rascal Creek, Bear Creek [303(d)]	-	-	No long term impacts anticipated	1.91	0.09	TBD	WPCP/EW	E	12/30/16	6/15/18	1/30/19	12/31/18
65	10-0Y130_	MER	140	2.3	49	5	MER 140 ACCESS ROADS – EXTEND CULVERTS & INSTALL END TREATMENTS – IN MERCED COUNTY ON ROUTE 140 FROM OUTSIDE CANAL BRIDGE TO 0.7 MILE EAST OF CUNNINGHAM ROAD	Fahr Creek,	401	NA	No long term impacts anticipated	0.65	0.21	TBD	WPCP	E	1/2/18	1/3/20	7/15/20	12/1/20
66	10-0Y210_	TUO	108	4.3	-	5	PEACEFUL OAK RAMPS – RAMP PROJECT – ON SR 108 IN TUOLUMNE COUNTY ON PEACEFUL OAK INTERCHANGE WITHIN THE EAST SONORA BYPASS STAGE II LIMITS (R4.0/R6.0)	-	401	-	No long term impacts anticipated	19.7	2.94	-	SWPPP	C	4/28/15	3/1/19	9/16/19	12/31/20

Table 6-1: District 10 Anticipated Project Development and Construction Schedule

No.	EA	Project Location					Project Description ^{2,3}	Water Bodies Within or Adjacent to Project Limits ⁴	Dredge and Fill Activities (Y/N/NA) ⁵	Other Regional Water Board Permits Required ⁶	Potential and Actual Impacts of Project's Discharge ⁷	Disturbed Soil Area (acres)	Area of New Impervious Surface (acres)	Percentage of New Impervious Surface to Existing Impervious Surface	Description of Construction Controls (SWPPP/WPCP/TBD) ⁸	Post-Construction Treatment Control Type, Quantity ⁹	Anticipated Project Delivery Schedule		Construction Period	
		Co.	Route	Begin PM	End PM	RB ¹											PA&ED Date	PS&E Date	Start Date	End Date
67	10-0Y220_	TUO	49	13.5	18.6	5	TUOLUMNE GUARDRAIL – UPGRADE METAL BEAM GUARDRAIL AND END TREATMENTS – IN TUOLUMNE COUNTY AT VARIOUS LOCATIONS ON ROUTE 49 AND ROUTE 108	-	401	-	No long term impacts anticipated	0.6	0.03	TBD	WPCP	E	2/9/16	6/17/16	11/30/16	6/30/17
68	10-0Y340_	MPA	140	32.2	32.2	5	SR140 SLOPE REPAIR - SLOPE REPAIR - IN MARIPOSA COUNTY ON STATE ROUTE 140 ABOUT 2.1 MILES WEST OF BULL CREEK ROAD	TBD	401	TBD	No long term impacts anticipated	2.5	0	TBD	WPCP	E	6/30/16	1/28/18	5/28/18	11/24/18
69	10-0Y450_	TUO	120	T24.6	29.3	5	TUO 120 Turnouts Construction - PROVIDE VEHICLE TURNOUTS - IN TUOLUMNE COUNTY NEAR GROVELAND AT VARIOUS LOCATIONS FROM 0.5 MILE EAST OF ROUTE 49 TO 4 MILES EAST OF EAST RIVER ROAD	TBD	TBD	TBD	TBD	0.5	0.4	TBD	WPCP	E	2/10/16	10/3/16	4/3/17	8/1/17
70	10-0Y550_	SJ	12	14.9	18.1	5	LODI ADA IMPROVEMENTS - UPGRADE CURB RAMPS, SIDEWALKS AND DRIVEWAYS TO CURRENT ADA STANDARDS - IN SAN JOAQUIN COUNTY IN THE CITY OF LODI ON ROUTE 12 BETWEEN SOUTH SCHOOL STREET AND SOUTH CENTRAL AVENUE	-	TBD	-	No long term impacts anticipated	0.5	0	0	WPCP	E	11/17/15	6/15/17	12/15/17	10/31/18
71	10-0Y571_	STA	99	16.8	19.7	5	SR99 STANISLAUS AWS – INSTALL AUTOMATED WARNING SYSTEM (AWS) – IN STANISLAUS COUNTY IN MODESTO ON STATE ROUTE 99 AT KANSAS AVE AND BECKWITH/STANDIFORD AVENUE	TBD	-	TBD	No long term impacts anticipated	0.1	0.02	TBD	WPCP	E	5/4/15	2/11/16	8/3/16	12/30/16

Table 6-1: District 10 Anticipated Project Development and Construction Schedule

No.	EA	Project Location					Project Description ^{2,3}	Water Bodies Within or Adjacent to Project Limits ⁴	Dredge and Fill Activities (Y/N/NA) ⁵	Other Regional Water Board Permits Required ⁶	Potential and Actual Impacts of Project's Discharge ⁷	Disturbed Soil Area (acres)	Area of New Impervious Surface (acres)	Percentage of New Impervious Surface to Existing Impervious Surface	Description of Construction Controls (SWPPP/WPCP/TBD) ⁸	Post-Construction Treatment Control Type, Quantity ⁹	Anticipated Project Delivery Schedule		Construction Period	
		Co.	Route	Begin PM	End PM	RB ¹											PA&E Date	PS&E Date	Start Date	End Date
72	10-0Y590_	SJ	12	15	27.6	5	SR140 CURB RAMPS AND SIDEWALK INSTALLATION - CONSTRUCT ADA UPGRADES - IN AND NEAR LODI FROM 0.2 MI WEST OF LOWER SACRAMENTO ROAD TO CALAVERAS COUNTY LINE	TBD	TBD	TBD	TBD	0.07	0	TBD	WPCP	E	4/15/20	5/1/22	11/15/22	11/5/23
73	10-0Y620_	MER	99	13.3	21.4	5	SR99 SAFETY IMPROVEMENTS - RELOCATE OVERHEAD SIGN STRUCTURES - IN MERCED AND STANISLAUS COUNTIES ON ROUTE 99 AT VARIOUS LOCATIONS	-	-	-	No long term impacts anticipated	0.6	0.14	TBD	WPCP	E	12/10/15	6/17/16	11/30/16	9/30/17
74	10-0Y630_	MER	99	23.7	30.4	5	LIVINGSTON MEDIAN BARRIER – INSTALL DOUBLE THRIE BEAM MEDIAN BARRIER – IN MERCED COUNTY IN AND NEAR LIVINGSTON FROM 0.2 MILE NORTH OF WEST ATWATER OVERHEAD TO WINTON PARKWAY OVERCROSSING	Duck Slough, Miles Creek, Bear Creek	-	NA	No long term impacts anticipated	5.3	0	0	SWPPP	E	3/19/15	1/28/16	7/18/16	11/18/16
75	10-0Y740_	MER	140	6.1	35.8	5	MERCED 140 CAPM - DIGOUT AND REPAIR LOCALIZED FAILURES AND PLACE ASPHALT CONCRETE OVERLAY - IN MERCED COUNTY IN AND NEAR MERCED ON STATE ROUTE 140 FROM EAST JUNCTION STATE ROUTE 33 TO STATE ROUTE 99	-	-	-	No long term impacts anticipated	0.6	0	TBD	WPCP	E	11/10/15	8/1/16	4/3/17	12/1/17
76	10-0Y770_	MPA	140	12	22	5	SR140 MARIPOSA CAPM - PAVEMENT PRESERVATION - NEAR MARIPOSA FROM 1.7 MI EAST OF CATHEYS VALLEY PARK TO NORTH JUNCTION SR 49-140	TBD	TBD	TBD	No long term impacts anticipated	0.5	0	TBD	WPCP	E	2/1/20	6/1/22	12/1/23	6/1/24

Table 6-1: District 10 Anticipated Project Development and Construction Schedule

No.	EA	Project Location					Project Description ^{2,3}	Water Bodies Within or Adjacent to Project Limits ⁴	Dredge and Fill Activities (Y/N/NA) ⁵	Other Regional Water Board Permits Required ⁶	Potential and Actual Impacts of Project's Discharge ⁷	Disturbed Soil Area (acres)	Area of New Impervious Surface (acres)	Percentage of New Impervious Surface to Existing Impervious Surface	Description of Construction Controls (SWPPP/WPCP/TBD) ⁸	Post-Construction Treatment Control Type, Quantity ⁹	Anticipated Project Delivery Schedule		Construction Period	
		Co.	Route	Begin PM	End PM	RB ¹											PA&ED Date	PS&E Date	Start Date	End Date
77	10-0Y790_	TUO	120	48.8	48.8	5	SR120 SLOPE MODIFICATION - STABILIZE SLOPE - IN TUOLUMNE COUNTY FROM 1.5 MI EAST OF SWEET WATER ROAD TO 0.5 MI WEST OF SOUT FORK TUOLUMNE RIVER BRIDGE	-	-	-	No long term impacts anticipated	0.38	0.05	-	WPCP	E	1/30/18	1/15/19	6/26/19	11/1/19
78	10-0Y800_	TUO	108	32.2	34.4	5	SR108 TUOLUMNE WIRE MESH - INSTALL WIRE MESH DRAPERY - NEAR STRAWBERRY FROM 0.3 MI E OF OLD STRAWBERRY ROAD TO 0.7 MILE WEST OF BEARDSLEY ROAD	-	-	-	No long term impacts anticipated	4.6	0	0	WPCP	E	11/1/17	1/15/19	6/26/19	11/1/19
79	10-1A690_	STA	99	9.7	10.9	5	MITCHELL ROAD INTERCHANGE - RECONSTRUCT INTERCHANGE - ON RTE 99 IN CERES, IN STANISLAUS COUNTY FROM 0.5 KM SOUTH TO 1.0 KM NORTH OF MITCHELL ROAD (KP 15.6/17.5)	TBD	-	TBD	TBD	TBD	TBD	TBD	TBD	TBD	4/21/17	10/1/19	1/2/20	9/1/22
80	10-1C060_	SJ	5	0.0	-	-	SJ 5/99 ADA IMPROVEMENTS - ADA UPGRADES - IN SAN JOAQUIN COUNTY ON STATE ROUTE 5 AND 99 IN THE CITIES OF RIPON, STOCKTON AND LODI	-	-	-	No long term impacts anticipated	0.88	0.47	0	WPCP	E	7/1/17	2/15/19	10/1/19	10/15/20
81	10-1C090_	SJ	4	17.4	-	5	CROSTOWN VIADUCT BRIDGE MAINTENANCE - REPAIR HINGES AND BEARING PADS - IN SAN JOAQUIN COUNTY IN STOCKTON FROM CENTER STREET TO UNION STREET	-	-	-	No long term impacts anticipated	0.44	0	0	WPCP	E	6/25/14	3/27/15	10/23/15	10/31/17

Table 6-1: District 10 Anticipated Project Development and Construction Schedule

No.	EA	Project Location					Project Description ^{2,3}	Water Bodies Within or Adjacent to Project Limits ⁴	Dredge and Fill Activities (Y/N/NA) ⁵	Other Regional Water Board Permits Required ⁶	Potential and Actual Impacts of Project's Discharge ⁷	Disturbed Soil Area (acres)	Area of New Impervious Surface (acres)	Percentage of New Impervious Surface to Existing Impervious Surface	Description of Construction Controls (SWPPP/WPCP/TBD) ⁸	Post-Construction Treatment Control Type, Quantity ⁹	Anticipated Project Delivery Schedule		Construction Period	
		Co.	Route	Begin PM	End PM	RB ¹											PA&ED Date	PS&E Date	Start Date	End Date
82	10-1C140_	STA	33	0.4	0.4	-	NEWMAN INTERSECTION OVERSIGHT - WIDEN INTERSECTION & INSTALL TRAFFIC SIGNALS - IN STANISLAUS COUNTY, IN THE CITY OF NEWMAN AT THE INTERSECTION OF STATE ROUTE 33 AND INYO AVENUE	TBD	TBD	TBD	TBD	TBD	TBD	TBD	TBD		4/15/16	7/1/16	10/17/16	12/30/16
83	10-1C180_	MER	99	35.9	37.3	5	TURLOCK 2R – PAVEMENT RESURFACING AND RESTORATION (2R) – IN MERCED AND STANISLAUS COUNTIES NEAR TURLOCK FROM 0.3 MILE NORTH OF BRADBURY ROAD OVERCROSSING TO 0.2 MILE NORTH OF STANISLAUS COUNTY LINE	-	TBD	-	No long term impacts anticipated	7.36	1.3	-	SWPPP	E	12/4/15	6/8/17	12/20/17	12/16/19
84	10-1C200_	SJ	4	2	-	5	MER/SJ/STA CULVERTS – CULVERT REHABILITATION – IN SAN JOAQUIN COUNTY AT VARIOUS LOCATIONS	-	-	-	No long term impacts anticipated	0.03	0	0	WPCP	E	4/4/18	1/2/20	2/1/21	5/3/21
85	10-1C220_	MPA	120	43.6	-	5	SJ TMS REPAIR – TMS ELEMENT REPAIR – IN MARIPOSA, MERCED, STANISLAUS AND TUOLUMNE COUNTIES ON STATE ROUTES 120, 140, 152, 108, 205 AND ON INTERSTATE 5	-	TBD	-	No long term impacts anticipated	0	0	0	WPCP	E	3/26/15	5/15/15	12/31/15	1/5/17
86	10-1C270_	STA	5	27.0 / 27.4	-	5	WESTLEY REST AREA - REPLACE REST AREA - IN STANISLAUS COUNTY AT WESTLEY REST AREA	TBD	TBD	TBD	TBD	TBD	TBD	TBD	TBD		3/1/17	8/1/18	2/15/19	12/30/20

Table 6-1: District 10 Anticipated Project Development and Construction Schedule

No.	EA	Project Location					Project Description ^{2,3}	Water Bodies Within or Adjacent to Project Limits ⁴	Dredge and Fill Activities (Y/N/NA) ⁵	Other Regional Water Board Permits Required ⁶	Potential and Actual Impacts of Project's Discharge ⁷	Disturbed Soil Area (acres)	Area of New Impervious Surface (acres)	Percentage of New Impervious Surface to Existing Impervious Surface	Description of Construction Controls (SWPPP/WPCP/TBD) ⁸	Post-Construction Treatment Control Type, Quantity ⁹	Anticipated Project Delivery Schedule		Construction Period	
		Co.	Route	Begin PM	End PM	RB ¹											PA&ED Date	PS&E Date	Start Date	End Date
87	10-1C290_	STA	99	0	24.8	5	SR99 STANISLAUS CAPM RAMPS – PAVEMENT PRESERVATION – IN STANISLAUS COUNTY IN AND NEAR TURLOCK AND MODESTO FROM MERCED COUNTY LINE TO SAN JOAQUIN COUNTY LINE	-	-	-	No long term impacts anticipated	0	0	0	WPCP	-	10/3/16	2/1/18	9/15/18	1/2/20
88	10-1C300_	STA	99	20.9	24.7	5	SJ and STA Ramp Metering – OPERATIONAL IMPROVEMENTS – IN STA COUNTY & SAN JOAQUIN IN & NEAR MODESTO, RIPON, & MANTECA A VARIOUS LOCATIONS FROM 0.5 MI S OF PALENDALE AVE OC TO YOSEMITE AVE (SR 120 EAST) JUNCTION	-	-	-	No long term impacts anticipated	5	3.9	TBD	SWPPP	C	6/30/16	6/30/17	3/30/18	2/28/19
89	10-1C330_	SJ	205	0	13.4	5	SR205 SMART CORRIDOR – PHASE 2 – RAMP METERS – IN SAN JOAQUIN COUNTY ON STATE ROUTE 205 NEAR TRACY FROM ALAMEDA COUNTY LINE TO STATE ROUTE 5	TBD	-	TBD	TBD	TBD	TBD	TBD	TBD	TBD	1/15/18	7/15/19	2/19/20	11/1/21
90	10-1C360_	AMA	88	0	-	5	SR 88 Guardrail Upgrade - UPGRADE METAL BEAM GUARDRAIL TO MIDWEST GUARDRAIL SYSTEM - IN AMADOR COUNTY ON ROUTE 88 AT VARIOUS LOCATIONS	-	-	-	No long term impacts anticipated	0.1	0	TBD	WPCP	E	7/1/20	4/15/21	1/1/21	11/15/22
91	10-1C421_	SJ	99	14	23	5	Installation of fiber optic cable in Arch Road Interchange - RAMP METERING AND FIBER OPTIC CABLE - IN SAN JOAQUIN COUNTY IN STOCKTON FROM MARSH STREET POC TO HAMMER LANE INTERCHANGE	French Camp Slough	-	-	No long term impacts anticipated	1.37	0.4	24	SWPPP	N	-	6/9/16	12/1/16	1/10/18

Table 6-1: District 10 Anticipated Project Development and Construction Schedule

No.	EA	Project Location					Project Description ^{2,3}	Water Bodies Within or Adjacent to Project Limits ⁴	Dredge and Fill Activities (Y/N/NA) ⁵	Other Regional Water Board Permits Required ⁶	Potential and Actual Impacts of Project's Discharge ⁷	Disturbed Soil Area (acres)	Area of New Impervious Surface (acres)	Percentage of New Impervious Surface to Existing Impervious Surface	Description of Construction Controls (SWPPP/WPCP/TBD) ⁸	Post-Construction Treatment Control Type, Quantity ⁹	Anticipated Project Delivery Schedule		Construction Period	
		Co.	Route	Begin PM	End PM	RB ¹											PA&E Date	PS&E Date	Start Date	End Date
92	10-1C430_	AMA	88	3.3	71.6	5	Rumble Strip Installation - CENTERLINE AND EDGE LINE RUMBLE STRIP INSTALLATION - VARIOUS LOCATIONS ALONG SR 16, 49, 88 AND 104 IN AMADOR AND ALPINE COUNTIES	-	-	-	No long term impacts anticipated	0	0	0	WPCP	E	3/1/17	3/2/18	11/15/18	7/1/19
93	10-1C440_	TUO	108	0	50	5	Tuo Route 108 Rumble Strip Installation - INSTALL CENTERLINE, EDGELINE AND SHOULDER RUMBLE STRIPS - IN TUOLUMNE COUNTY ON ROUTE 108 AT VARIOUS LOCATIONS	-	-	-	No long term impacts anticipated	0	0	0	WPCP	E	5/4/17	1/19/18	6/28/18	12/28/18
94	10-1C460_	TUO	120	0	-	5	STA, MPA & TUO Rumble Strips - INSTALL CENTERLINE, EDGE LINE AND SHOULDER RUMBLE STRIPS - IN TUOLUMNE COUNTY AT VARIOUS LOCATIONS; ALSO ON TUO 108; STA-120 & 108 AND MPA-120; VARIOUS LOCATIONS	TBD	TBD	TBD	TBD	TBD	TBD	TBD	TBD	TBD	8/3/17	10/26/18	4/8/19	10/31/19
95	10-1C470_	SJ	99	12.9	37.3	5	SR 99 Rumble Strip Installation - INSTALL SHOULDER RUMBLE STRIPS AND STREET LIGHTS - IN MERCED, STANISLAUS AND SAN JOAQUIN COUNTIES AT VARIOUS LOCATIONS	various	-	-	No long term impacts anticipated	0	0	0	WPCP	E	2/8/16	7/19/16	12/5/16	6/5/17
96	10-1C480_	SJ	4	0.6	11.8	5	SR4&88 Rumble Strip Installation - RUMBLE STRIP INSTALLATIONS AT VARIOUS LOCATIONS ALONG SR 4 AND 88 IN SAN JOAQUIN AND SR 4 IN - STANISLAUS COUNTIES. VARIOUS LOCATIONS ALONG SR 4 AND 88 IN SAN JOAQUIN AND SR 4 IN STANISLAUS COUNTIES	TBD	TBD	TBD	TBD	0	0	0	WPCP	E	6/30/17	3/20/18	8/30/18	2/28/19

Table 6-1: District 10 Anticipated Project Development and Construction Schedule

No.	EA	Project Location					Project Description ^{2,3}	Water Bodies Within or Adjacent to Project Limits ⁴	Dredge and Fill Activities (Y/N/NA) ⁵	Other Regional Water Board Permits Required ⁶	Potential and Actual Impacts of Project's Discharge ⁷	Disturbed Soil Area (acres)	Area of New Impervious Surface (acres)	Percentage of New Impervious Surface to Existing Impervious Surface	Description of Construction Controls (SWPPP/WPCP/TBD) ⁸	Post-Construction Treatment Control Type, Quantity ⁹	Anticipated Project Delivery Schedule		Construction Period	
		Co.	Route	Begin PM	End PM	RB ¹											PA&ED Date	PS&E Date	Start Date	End Date
97	10-1C490_	STA	33	17.4	26.4	5	SR 33 Installing Rumble Strips - INSTALL CENTER LINE & EDGE LINE RUMBLE STRIPS - IN MERCED AND STANISLAUS COUNTIES AT VARIOUS LOCATIONS	various	-	-	No long term impacts anticipated	0	0	0	WPCP	E	12/2/15	7/5/16	11/30/16	5/29/17
98	10-1C500_	SJ	4	15.5	16.5	-	SJ SR 4 Pavement Resurfacing and Restoration - PAVEMENT RESURFACING AND PRESERVATION - IN STOCKTON FROM 0.1 MI EAST OF FRESNO AVE TO CENTRAL VIADUCT	TBD	TBD	TBD	No long term impacts anticipated	1.5	1	0	SWPPP	C	5/7/20	8/15/21	3/16/22	5/24/22
99	10-1C530_	SJ	0	-	-	5	STA/SJ SIGNS REHAB - SIGNS AND LIGHTING REHAB - IN SAN JOAQUIN AND STANISLAUS COUNTIES ON VARIOUS ROUTES	-	-	-	No long term impacts anticipated	0.09	0.02	0	WPCP	E	4/3/17	12/3/18	7/15/19	12/2/19
100	10-1C540_	TUO	108	L0.0	L0.3	5	SR108 INTERSECTION IMPROVEMENT - INTERSECTION IMPROVEMENTS - IN TUOLUMNE COUNTY ON RTE 108 FROM YOSEMITE JCT TO 2.5 MI W OF RTE 49 & ON RTE 120 FROM 0.5 MI E OF OBYRNES FERRY ROAD TO 0.1 MI S OF YOSEMITE JCT	New Melones Reservoir, Tulloch Reservoir	-	-	No long term impacts anticipated	0.9	0.8	0	WPCP	E	4/5/2017	6/29/18	1/30/19	3/5/20
101	10-1C550_	MER	152	R2.4	R2.4	5	SR152 MERCED MEDIAN BARRIERS - - IN MERCED COUNTY ALONG STATE ROUTE 152 FROM PM R2.4 TO PM R6.0 IN MERCED COUNTY 12 MILES WEST OF THE CITY OF LOS BANOS FROM VISTA POINT ACCESS ROAD TO SAN LUIS DAM SERVICE ROAD	various	-	-	No long term impacts anticipated	2.5	0	0	WPCP	E	5/4/16	1/10/17	6/5/17	11/10/17

Table 6-1: District 10 Anticipated Project Development and Construction Schedule

No.	EA	Project Location					Project Description ^{2,3}	Water Bodies Within or Adjacent to Project Limits ⁴	Dredge and Fill Activities (Y/N/NA) ⁵	Other Regional Water Board Permits Required ⁶	Potential and Actual Impacts of Project's Discharge ⁷	Disturbed Soil Area (acres)	Area of New Impervious Surface (acres)	Percentage of New Impervious Surface to Existing Impervious Surface	Description of Construction Controls (SWPPP/WPCP/TBD) ⁸	Post-Construction Treatment Control Type, Quantity ⁹	Anticipated Project Delivery Schedule		Construction Period	
		Co.	Route	Begin PM	End PM	RB ¹											PA&ED Date	PS&E Date	Start Date	End Date
102	10-1C620_	SJ	0	-	-	5	SJ/MER/STA/TUO TMS ELEMENT UPGRADES - UPGRADE TMS ELEMENTS - IN SAN JOAQUIN, MERCED AND AMADOR COUNTIES ON VARIOUS ROUTES	various	-	-	No long term impacts anticipated	0.5	0	0	WPCP	E	4/3/2017	8/8/18	4/15/19	12/1/19
103	10-1C660_	SJ	120	R16.9	R16.9	5	SJ 120 STAA Improvement - PROVIDE STAA ACCESS SO THAT STAA TRUCKS CAN ACCESS TERMINALS ALONG MCHENRY AVENUE IN ESCALON. - IN SAN JOAQUIN COUNTY, AT SJ 120/MCHENRY AVENUE, STAA IMPROVMENT	TBD	TBD	TBD	TBD	TBD	TBD	TBD	TBD	TBD	5/31/16	9/1/17	3/15/18	11/1/18
104	10-1C690_	TUO	0	-	-	5	Draft TUOLUMNE DRAINAGE RESTORATION - DRAINAGE SYSTEM RESTORATION - IN TUOLUMNE COUNTY ON ROUTES 49, 108 AND 120 AT VARIOUS LOCATIONS	various	-	-	No long term impacts anticipated	0.72	0	0	WPCP	E	6/1/17	7/1/18	2/15/19	12/1/19
105	10-1C790_	MER	5	0.4	0.8	5	MER John Erreca Roadside Rest Area - REHABILITATE REST AREA - ABOUT 21 MILES SOUTH OF SANTA NELLA AT THE ERRECA STATE ROADSIDE REST AREA	-	-	-	-	-	-	-	-	-	12/17/18	9/22/20	7/30/22	5/4/24
106	10-1C800_	SJ	4	0.0	0.0	5	SJ BRIDGE MAINTENANCE - BRIDGE PREVENTATIVE MAINTENANCE - NEAR DISCOVERY BAY AT OLD RIVER BRIDGE (#29-0045)	Old River	401	404	No long term impacts anticipated	0	0	0	WPCP	E	8/15/18	5/4/20	10/21/20	4/21/22

Table 6-1: District 10 Anticipated Project Development and Construction Schedule

No.	EA	Project Location					Project Description ^{2,3}	Water Bodies Within or Adjacent to Project Limits ⁴	Dredge and Fill Activities (Y/N/NA) ⁵	Other Regional Water Board Permits Required ⁶	Potential and Actual Impacts of Project's Discharge ⁷	Disturbed Soil Area (acres)	Area of New Impervious Surface (acres)	Percentage of New Impervious Surface to Existing Impervious Surface	Description of Construction Controls (SWPPP/WPCP/TBD) ⁸	Post-Construction Treatment Control Type, Quantity ⁹	Anticipated Project Delivery Schedule		Construction Period	
		Co.	Route	Begin PM	End PM	RB ¹											PA&ED Date	PS&E Date	Start Date	End Date
107	10-1C810_	MER	0	-	-	5	D10 BRIDGE SUBSTRUCTURE REPAIRS - BRIDGE PREVENTATIVE MAINTENANCE - IN MERCED, SAN JOAQUIN, MARIPOSA AND STANISLAUS COUNTIES AT VARIOUS LOCATIONS	various	401	404, 1600	No long term impacts anticipated	2.11	0.08	0	WPCP	E	7/2/18	4/15/20	10/21/20	10/29/21
108	10-1C860_	SJ	4	17.3	17.4	5	SJ SR 99 Reconstruction of Hinge 32 - RECONSTRUCT HINGE #32 - IN STOCKTON AT CROSSTOWN FREEWAY VIADUCT	-	-	-	No long term impacts anticipated	0.01	0	0	WPCP	E	2/1/17	2/15/19	7/15/19	3/2/20
109	10-1C880_	SJ	99	21.7	-	-	SJ Route 99 Bridge Girder Replacement - REPLACE GIRDER - IN STOCKTON AT WILSON WAY OC	-	-	-	No long term impacts anticipated	0	0	0	WPCP	E	7/13/17	7/5/18	11/22/18	9/30/19
110	10-1C940_	SJ	5	26.5	-	5	SJ SR 5 Bridge Deck Rehabilitation - REHABILITATE BRIDGE DECK - IN STOCKTON AT STOCKTON CHANNEL VIADUCT	TBD	TBD	TBD	TBD	TBD	TBD	TBD	TBD	TBD	5/27/17	10/22/18	4/22/19	11/18/19
111	10-1C970_	STA	5	0	-	-	Install Midwest Guardrail System - UPGRADE GUARDRAIL - IN STANISLAUS COUNTY ON ROUTE 5, ALSO ON SJ-5 AND MER-152 AT VARIOUS LOCATIONS	-	-	-	No long term impacts anticipated	3.1	0.28	0	WPCP	E	3/1/19	1/15/20	7/15/20	12/1/20
112	10-1E200_	STA	132	0	51.1	5	SR 132 Installing Rumble Strips - INSTALL CENTER LINE & SHOULDER RUMBLE STRIPS - IN MARIPOSA, SAN JOAQUIN AND STANISLAUS COUNTIES AT VARIOUS LOCATIONS	-	-	-	No long term impacts anticipated	0	0	0	WPCP	E	12/15/15	6/3/16	10/28/16	4/28/17

Table 6-1: District 10 Anticipated Project Development and Construction Schedule

No.	EA	Project Location					Project Description ^{2,3}	Water Bodies Within or Adjacent to Project Limits ⁴	Dredge and Fill Activities (Y/N/NA) ⁵	Other Regional Water Board Permits Required ⁶	Potential and Actual Impacts of Project's Discharge ⁷	Disturbed Soil Area (acres)	Area of New Impervious Surface (acres)	Percentage of New Impervious Surface to Existing Impervious Surface	Description of Construction Controls (SWPPP/WPCP/TBD) ⁸	Post-Construction Treatment Control Type, Quantity ⁹	Anticipated Project Delivery Schedule		Construction Period	
		Co.	Route	Begin PM	End PM	RB ¹											PA&E Date	PS&E Date	Start Date	End Date
113	10-1E210_	SJ	205	1.1	1.6	5	I-205/MHP INTERCHANGE - INTERCHANGE IMPROVEMENTS - IN SAN JOAQUIN COUNTY IN THE CITY OF TRACY FROM 0.3 MI WEST TO 0.2 MI EAST OF MOUNTAIN HOUSE PARKWAY OC	TBD	TBD	TBD	TBD	TBD	TBD	TBD	TBD	TBD	2/1/17	5/11/18	11/16/18	12/2/19
114	10-1E220_	SJ	580	13.3	13.8	5	I-580/MHP INTERCHANGE - INTERCHANGE IMPROVEMENTS - IN SAN JOAQUIN COUNTY IN THE CITY OF TRACY FROM 0.2 MI. EAST TO 0.3 MI. WEST OF PATTERSON PASS ROAD OC	TBD	TBD	TBD	TBD	TBD	TBD	TBD	TBD	TBD	2/1/17	5/11/18	11/16/18	12/2/19
115	10-1E290_	TUO	49	18.5	18.5	5	SR49 SHAW FLAT ROAD INTERSECTION - INTERSECTION IMPROVEMENTS - NEAR SONORA AT SHAW'S FLAT ROAD	Woods Creek	401	-	No long term impacts anticipated	1.5	0.8	36	SWPPP	C	10/1/18	1/2/20	8/15/20	5/1/21
116	10-1E350_	MER	59	16	16.2	5	Merced 59 W. Olive Roundabout - INTERSECTION IMPROVEMENTS - IN MERCED COUNTY IN MERCED FROM 0.1 MILE NORTH OF COOPER AVENUE TO SOUTH FORK BLACK RASCAL CREEK	-	-	-	No long term impacts anticipated	0.8	0.8	0	WPCP	E	1/11/17	6/29/18	1/4/19	12/1/20
117	10-1E520_	SJ	120	1.3	3.9	5	SR 120 Automatic Warning System Installation - INSTALL AN AUTOMATIC WARNING SYSTEM - IN SAN JOAQUIN COUNTY NEAR MANTECA AT VARIOUS LOCATIONS FROM GUTHMILLER ROAD UNDERCROSSING TO 0.5 MILE EAST OF AIRPORT WAY OVERCROSSING	-	-	-	No long term impacts anticipated	0.15	0.01	0	WPCP	E	2/9/16	2/25/16	6/15/16	7/11/17

Table 6-1: District 10 Anticipated Project Development and Construction Schedule

No.	EA	Project Location					Project Description ^{2,3}	Water Bodies Within or Adjacent to Project Limits ⁴	Dredge and Fill Activities (Y/N/NA) ⁵	Other Regional Water Board Permits Required ⁶	Potential and Actual Impacts of Project's Discharge ⁷	Disturbed Soil Area (acres)	Area of New Impervious Surface (acres)	Percentage of New Impervious Surface to Existing Impervious Surface	Description of Construction Controls (SWPPP/WPCP/TBD) ⁸	Post-Construction Treatment Control Type, Quantity ⁹	Anticipated Project Delivery Schedule		Construction Period	
		Co.	Route	Begin PM	End PM	RB ¹											PA&ED Date	PS&E Date	Start Date	End Date
118	10-1E531_	SJ	88	22.1	-	5	Install traffic signal - INTERSECTION IMPROVEMENTS - NEAR DOGTOWN AT LIBERTY ROAD	TBD	TBD	TBD	No long term impacts anticipated	2.25	0.23	0	WPCP	E	7/31/17	7/5/18	11/29/18	5/30/19
119	10-1E570_	MPA	49	0.3	23	-	Rumble Strip Installation - CONSTRUCT CENTERLINE AND EDGE-LINE RUMBLE STRIPS - IN MARIPOSA AND TUOLUMNE COUNTIES ON ROUTES 49 AND 120 AT VARIOUS LOCATIONS	TBD	TBD	TBD	No long term impacts anticipated	0	0	0	WPCP	E	3/1/17	3/2/18	11/15/18	7/1/19
120	10-1E580_	MER	165	0	-	5	MER, MPA, STA Rumble Strip installation - MERCED COUNTY AND MARIPOSA COUNTIES - AND IN SR 165 IN MERCED AND STANISLAUS COUNTIES. AND IN SR 165 IN MERCED AND STANISLAUS COUNTIES RUMBLE STRP INSTALLATION	TBD	TBD	TBD	No long term impacts anticipated	0	0	0	WPCP	E	3/1/17	3/2/18	11/15/18	7/1/19
121	10-1E620_	59V	-	-	-	5	Replace Drainage Pumps - LOCATIONS STORMWATER PUMPING PLAN UPGRADES - STA AND MER ROUTE 99 & 59 REPLACE DRAINAGE PUMPS IN STANISLAUS AND MERCED COUNTIES AT VARIOUS LOCATIONS	TBD	TBD	TBD	No long term impacts anticipated	0	0	0	WPCP	E	6/26/19	9/9/20	3/26/21	2/9/22
122	10-1E700_	STA	132	R11.3	R11.7	5	Modesto Soil Stockpile Encapsulation - HAZARDOUS WASTE MITIGATION - IN MODESTO AT 3 STOCKPILES ALONG FUTURE SR 132 ALIGNMENT	-	-	-	No long term impacts anticipated	15	0	0	SWPPP	E	2/15/18	5/13/19	10/26/19	4/12/20

Table 6-1: District 10 Anticipated Project Development and Construction Schedule

No.	EA	Project Location					Project Description ^{2,3}	Water Bodies Within or Adjacent to Project Limits ⁴	Dredge and Fill Activities (Y/N/NA) ⁵	Other Regional Water Board Permits Required ⁶	Potential and Actual Impacts of Project's Discharge ⁷	Disturbed Soil Area (acres)	Area of New Impervious Surface (acres)	Percentage of New Impervious Surface to Existing Impervious Surface	Description of Construction Controls (SWPPP/WPCP/TBD) ⁸	Post-Construction Treatment Control Type, Quantity ⁹	Anticipated Project Delivery Schedule		Construction Period	
		Co.	Route	Begin PM	End PM	RB ¹											PA&E Date	PS&E Date	Start Date	End Date
123	10-1E740_	SJ	99	4.6	6.3	5	SR 99 and SR 120 Interchange Improvements - RECONSTRUCT INTERCHANGE - IN SAN JOAQUIN COUNTY IN MANTECA AT THE SR 99 AND SR 120 INTERCHANGE	TBD	TBD	TBD	No long term impacts anticipated	2	1.6	TBD	SWPPP	C	8/8/18	2/15/21	9/1/21	9/1/23
124	10-1E790_	SJ	5	28.3	-	5	LEEVE RESTORATION AT SMITH CANAL BRIDGES - ROCK SLOPE PROTECTION - IN STOCKTON AT SMITH CANAL	TBD	TBD	TBD	TBD	TBD	TBD	TBD	TBD	TBD	11/15/18	4/30/24	6/7/24	8/14/28
125	10-1F070_	SJ	99	28.3	31.4	5	Lodi 99 Widening - WIDEN FROM 4 TO 6 LANES - IN LODI FROM HARNEY LANE TO TURNER ROAD	TBD	TBD	TBD	TBD	TBD	TBD	TBD	TBD	TBD	11/30/18	5/10/24	6/21/24	9/1/28
126	10-1F170_	SJ	26	1.1	1.1	5	SJ Route 26 Increase Bridge Vertical Clearance - INCREASE BRIDGE VERTICAL CLEARANCE - IN SAN JOAQUIN COUNTY IN STOCKTON AT ROUTE 26/99 SEPARATION	TBD	TBD	TBD	No long term impacts anticipated	2.5	0	TBD	SWPPP	E	5/1/19	1/15/21	7/1/21	12/29/23
127	10-1F180_	SJ	4	16	19.4	5	SR-4 Ramp Metering System Installation - INSTALL RAMP METERING SYSTEM - IN STOCKTON FROM I-5 TO NORTH JUNCTION SR-99	TBD	TBD	TBD	No long term impacts anticipated	0.94	0.12	TBD	WPCP	E	1/15/20	6/15/22	12/1/22	7/18/25
128	10-1F270_	SJ	99	0	-	5	Highway Planting Restoration - TREE PRUNING AND REMOVAL - IN SAN JOAQUIN, STANISLAUS AND MERCED COUNTIES ON RTE 99 AT VARIOUS LOCATIONS	TBD	TBD	TBD	No long term impacts anticipated	0.2	0	TBD	WPCP	E	8/3/17	4/6/18	8/30/18	6/28/19

Table 6-1: District 10 Anticipated Project Development and Construction Schedule

No.	EA	Project Location					Project Description ^{2,3}	Water Bodies Within or Adjacent to Project Limits ⁴	Dredge and Fill Activities (Y/N/NA) ⁵	Other Regional Water Board Permits Required ⁶	Potential and Actual Impacts of Project's Discharge ⁷	Disturbed Soil Area (acres)	Area of New Impervious Surface (acres)	Percentage of New Impervious Surface to Existing Impervious Surface	Description of Construction Controls (SWPPP/WPCP/TBD) ⁸	Post-Construction Treatment Control Type, Quantity ⁹	Anticipated Project Delivery Schedule		Construction Period	
		Co.	Route	Begin PM	End PM	RB ¹											PA&ED Date	PS&E Date	Start Date	End Date
129	10-1F400_	SJ	4	0	-	-	SJ Changeable Message Signs - INSTALL TRAFFIC MANAGEMENT SYSTEMS - IN AND NEAR STOCKTON AT VARIOUS LOCATIONS; ALSO ON RTE 99 AND I-5	TBD	TBD	TBD	No long term impacts anticipated	0.98	0.17	TBD	WPCP	E	3/13/19	2/25/22	7/29/22	3/10/23
130	10-1F430_	MER	140	36	37.7	-	MER Route 140 Pavement Rehab - PAVEMENT REHAB - PAVEMENT REHAB IN MERCED COUNTY IN MERCED CITY FROM CYPRESS WAY TO 0.3 MILES EAST SANTA FE AVE.	TBD	TBD	TBD	No long term impacts anticipated	1.2	0.01	TBD	WPCP	E	11/1/16	1/15/18	7/2/18	3/1/19
131	10-1F460_	SJ	4	4.3	4.7	5	SJ Middle River Bridge Realignment - REALIGN CURVE AND UPGRADE GUARDRAIL - ABOUT 5 MI EAST OF DISCOVERY BAY FROM 0.1 MI EAST TO 0.3 MI EAST OF MIDDLE RIVER	TBD	TBD	TBD	TBD	TBD	TBD	TBD	TBD	TBD	4/19/19	9/26/24	11/4/24	1/12/29
132	10-1F640_	AMA	4	0	-	-	Tree Pruning and Removal - VARIOUS LOCATIONS IN AMADOR, ALPINE, CALAVERAS, MARIPOSA, MERCED, SAN JOAQUIN, STANISLAUS AND - TUOLUMNE COUNTIES ON ROUTES 4, 5, 12, 16, 33, 49, 59, 88, 89, 104, CALAVERAS, MARIPOSA, MERCED, SAN JOAQUIN, STANILAUS AND TUOLUMNE COUNTIES.	TBD	TBD	TBD	TBD	0.5	0	TBD	WPCP	E	8/3/17	4/6/18	8/30/18	6/28/19
133	10-1F730_	SJ	99	5.3	5.7	-	SJ 99 COLLISION REDUCTION - CONSTRUCT MEDIAN BARRIER - IN MANTECA FROM 0.5 MI TO 0.1 MI SOUTH OF N99/120W & E120/N99 CONNECTOR	TBD	TBD	TBD	TBD	0.12	0	TBD	WPCP	E	-	-	-	-

Table 6-1: District 10 Anticipated Project Development and Construction Schedule

No.	EA	Project Location					Project Description ^{2,3}	Water Bodies Within or Adjacent to Project Limits ⁴	Dredge and Fill Activities (Y/N/NA) ⁵	Other Regional Water Board Permits Required ⁶	Potential and Actual Impacts of Project's Discharge ⁷	Disturbed Soil Area (acres)	Area of New Impervious Surface (acres)	Percentage of New Impervious Surface to Existing Impervious Surface	Description of Construction Controls (SWPPP/WPCP/TBD) ⁸	Post-Construction Treatment Control Type, Quantity ⁹	Anticipated Project Delivery Schedule		Construction Period	
		Co.	Route	Begin PM	End PM	RB ¹											PA&ED Date	PS&E Date	Start Date	End Date
134	10-3A130_	MER	140	38.1	38.6	-	PARKWAY INTERCHANGE - CONSTRUCT INTERCHANGE AND OVERHEAD - IN MERCED COUNTY IN MERCED ON STATE ROUTE 140 FROM .65 MILES EAST OF SANTA FE AVENUE TO 0.15 MILES WEST OF KIBBY ROAD	-	401	-	No long term impacts anticipated	5.2	1.8	650	SWPPP	C	1/27/09	6/30/16	2/15/17	12/15/18
135	10-3A720_	MER	99	20.5	24.3	5	MER-99 ROADWAY PAVEMENT REHABILITATION - PAVEMENT RESURFACING & RESTORATION - IN MERCED COUNTY IN AND NEAR ATWATER FROM BUHACH OVERCROSSING TO 0.8 MILE SOUTH OF WESTSIDE BOULEVARD UNDERCROSSING	Atwater Canal	-	-	No long term impacts anticipated	34	27.8	61	SWPPP	E	11/30/15	3/30/17	10/19/17	10/17/19
136	10-3A730_	TUO	120	12.1	16.3	5	Chinese Camp CAPM - SHOULDER WIDENING, DIGOUT AND REPAIR OF LOCALIZED AREAS OF SEVERE FAILURE, RUBBERIZED ASPHALT - CONCRETE OVERLAY, MINOR REALIGNMENTS EAST JCT STATE ROUTE 108 TO SHAWMUT ROAD	Don Pedro Reservoir Tulloch Reservoir, Stanislaus River	TBD	NA	No long term impacts anticipated	0.33	0	0	WPCP	E	12/24/15	4/3/17	1/31/18	12/3/18
137	10-40160_	TUO	108	16.1	18.1	5	West Long Barn CAPM - PAVEMENT PRESERVATION - IN TUOLUMNE COUNTY NEAR LONG BARN ON STATE ROUTE 108 FROM LYONS DAM ROAD TO 0.1 MILE WEST OF EAST LONG BARN CONNECTION	-	NA	NA	No long term impacts anticipated	0.5	0	0	WPCP	E	8/14/13	7/3/17	11/29/17	8/1/18

Table 6-1: District 10 Anticipated Project Development and Construction Schedule

No.	EA	Project Location					Project Description ^{2,3}	Water Bodies Within or Adjacent to Project Limits ⁴	Dredge and Fill Activities (Y/N/NA) ⁵	Other Regional Water Board Permits Required ⁶	Potential and Actual Impacts of Project's Discharge ⁷	Disturbed Soil Area (acres)	Area of New Impervious Surface (acres)	Percentage of New Impervious Surface to Existing Impervious Surface	Description of Construction Controls (SWPPP/WPCP/TBD) ⁸	Post-Construction Treatment Control Type, Quantity ⁹	Anticipated Project Delivery Schedule		Construction Period	
		Co.	Route	Begin PM	End PM	RB ¹											PA&ED Date	PS&E Date	Start Date	End Date
138	10-40350_	STA	132	11.3	14.7	5	SR 132 West Expressway – CONSTRUCT 4 LANE EXPRESSWAY ON NEW ALIGNMENT AND SOUNDWALL – IN MODESTO ON NEW ALIGNMENT FROM DAKOTA TO SR 99	San Joaquin River, Tuolumne River	NA	NA	No long term impacts anticipated	67	TBD	TBD	SWPPP	C	6/1/17	6/1/19	3/1/20	6/1/22
139	10-41911_	MER	152	22.3	25.8	5	Los Banos Bypass Segment I – CONSTRUCT FOUR-LANE FREEWAY BYPASS ON SIX-LANE RIGHT OF WAY WITH SIGNALIZED AT-GRADE INTERSECTIONS – AT STATE ROUTE 165 AND EAST STATE ROUTE 152 NEAR SANTA FE ROAD WITH EXISTING SR 152 SIGNALIZED I/S	-	401	-	No long term impacts anticipated	>5	TBD	TBD	SWPPP	C	6/25/07	8/15/17	5/15/18	12/31/19
140	10-46210_	TUO	108	18.9	24.5	-	Long Barn CAPM - PAVEMENT REHAB AND SHOULDER WIDENING AT VARIOUS LOCATIONS - NEAR LONG BARN FROM 0.2 KM E OF LONG BARN CONNECTION TO 0.8 KM E OF HELIPORT RD (KP R30.5/39.5)	TBD	TBD	TBD	No long term impacts anticipated	0	0	0	WPCP	E	8/1/20	11/1/21	5/1/22	7/1/24

Treatment Control Status Legend	
BMP Device Types:	
BS	Biofiltration Strips and/or Swales
C	Under Consideration
D	Detention Devices
E	Exempt
DWFD	Dry Weather Flow Diversion
GSRD	Gross Solids Removal Devices
ID	Infiltration Devices – Water quality volume infiltrates within the right of way. (When this is demonstrated for at least 90% of the WQV, other types of treatment BMPs are not considered unless there is a location-specific requirement.)
MF	Media Filters
MCTT	Multi-chambered Treatment Trains
TST	Traction Sand Traps
WB	Wet Basins

Table 6-2 lists the planned maintenance projects that will disturb soil.

Table 6-2: District 10 Anticipated Significant Road Maintenance Activities

No.	Co.	Route	Beg PM	End PM	Regional Board	Description	Water Bodies Affected ¹⁰	Other Regional Water Board Permits Required ¹¹	Potential and Actual Impacts of Project's Discharge ¹²	Disturbed Soil Area (acres)	Area of New Impervious Surface (acres)	Percentage of New Impervious Surface to Existing Impervious Surface	Description of Construction Controls (SWPPP/WPCP/TBD/NA) ¹³	Post-Construction Treatment Control Type, Quantity ¹⁴	Start Date	Completion Date
None																

Treatment Control Status Legend	
BMP Device Types:	
BS	Biofiltration Strips and/or Swales
C	Under Consideration
D	Detention Devices
E	Exempt
DWFD	Dry Weather Flow Diversion
GSRD	Gross Solids Removal Devices
ID	Infiltration Devices – Water quality volume infiltrates within the right of way. (When this is demonstrated for at least 90% of the WQV, other types of treatment BMPs are not considered unless there is a location-specific requirement.)
MF	Media Filters
MCTT	Multi-chambered Treatment Trains
TST	Traction Sand Traps
WB	Wet Basins

¹⁰ Receiving waters within or adjacent to maintenance activity designated as “303(d) (constituent type).” Activity adjacent to Drinking Water Reservoir or Ground Water Recharge Facilities designated as “DW.”

¹¹ Regional Water Board Permits required other than Construction General Permit, such as Clean Water Act Section 401 water quality certification, Waiver of Discharge Requirements, Dewatering Permits, Bridge Painting WDRs, etc.

¹² This information may come from the Water Quality Assessment Report prepared for each project, a Water Quality Technical Memorandum, or other document that evaluates the water quality impacts of a project.

¹³ A description of the Construction Controls is available in the project’s Storm Water Pollution Prevention Plan (SWPPP), Water Pollution Control Plan (WPCP), is To Be Determined (TBD) if the Disturbed Soil Area is unavailable, or is Not Applicable (NA) because there is no Disturbed Soil Area associated with the project.

¹⁴ Treatment Control Status identified by: device type/number of devices, exempt (“E”), or under consideration (“C”). See Treatment Control Status Legend below for device type abbreviations.

Table 6-3 lists the District’s planned monitoring activities.

Table 6-3: District 10 Monitoring Activities

Statewide Monitoring Program Activities
ASBS Core Monitoring Sites
<ul style="list-style-type: none">• District sites include the following:<ul style="list-style-type: none">○ None
ASBS Ocean Receiving Water and Reference Monitoring Sites
<ul style="list-style-type: none">• District sites include the following:<ul style="list-style-type: none">○ None

This page was intentionally left blank.

7 Region-Specific Activities

Section 7 of the DWP identifies the applicable region-specific activities that District 10 has planned for the fiscal year 2017-18 to comply with Attachment V of the Conformed NPDES Permit.

Lahontan Region

Vegetation Removal or Existing Ground Surface Disturbance Prohibition

District 10 will comply with the vegetation removal or existing ground surface disturbance prohibition requirements within the Lahontan Region as described in the Conformed NPDES Permit.

Project Review Requirements

District 10 will comply with the project review requirements within the Lahontan Region as described in the Conformed NPDES Permit.

This page was intentionally left blank.