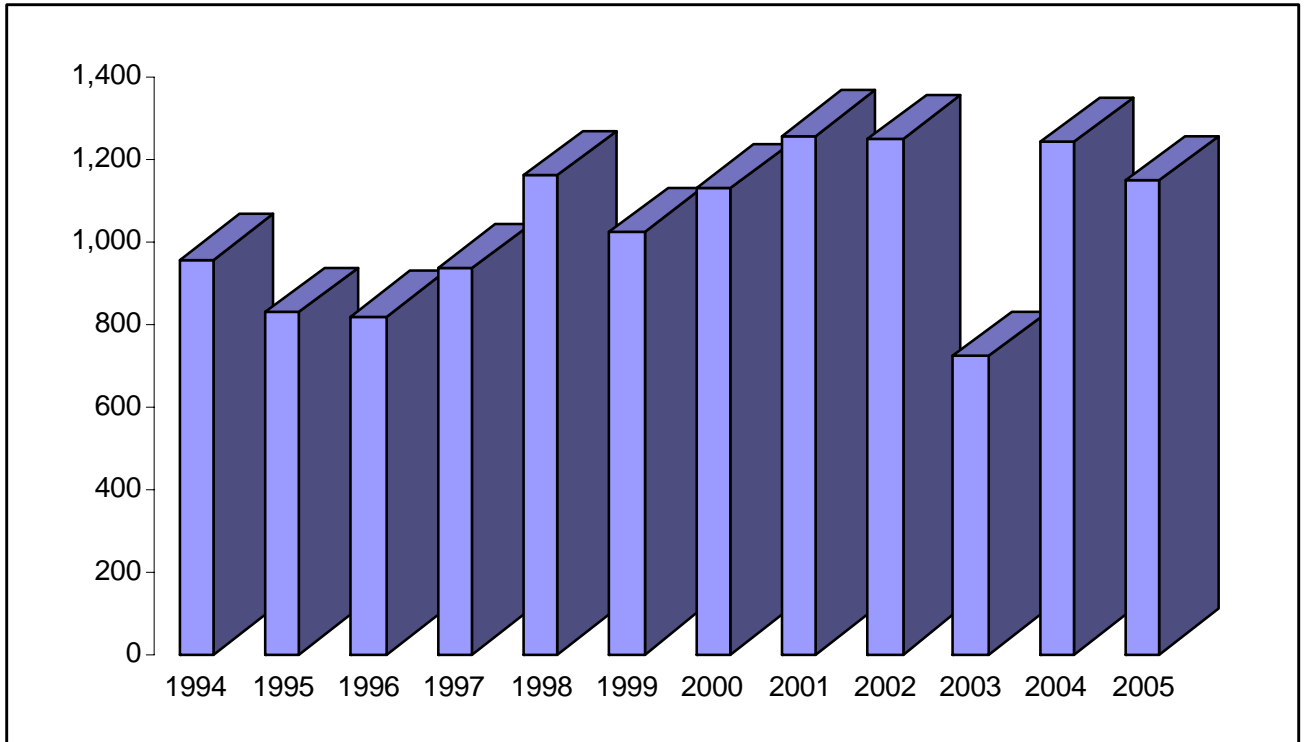


**Law Enforcement Officers
Assaulted Trend*
1994-2005**



YEAR	NUMBER	PERCENT OF CHANGE
1994	956	+ 11.3
1995	830	- 14.3
1996	819	- 1.3
1997	933	+ 13.9
1998	1,159	+ 24.2
1999	1,023	- 3.4
2000	1,128	+ 10.3
2001	1,257	+ 11.4
2002	1,248	- 0.7
2003	724	- 42.0
2004	1,241	+ 71.4
2005	1,145	- 7.7

Assaults on Law Enforcement Officers

2005

<i>Circumstance</i>	<i>Two Person Vehicle</i>		<i>One Person Vehicle</i>		<i>Detective</i>		<i>Other</i>		<i>Total Assaults</i>	<i>Assaults</i>	<i>Percent</i>
	<i>Alone</i>	<i>Assisted</i>	<i>Alone</i>	<i>Assisted</i>	<i>Alone</i>	<i>Assisted</i>	<i>Alone</i>	<i>Assisted</i>			
<i>Disturbance</i>	36	83	269	3	10	3	12	416	368	88.46	
<i>Burglary</i>	1	3	8	0	0	0	0	12	9	75	
<i>Robbery</i>	0	0	8	0	0	1	1	10	9	90	
<i>Other Arrest</i>	15	56	67	3	4	10	35	190	159	83.68	
<i>Civil Disorder</i>	0	2	1	0	0	0	2	5	1	20	
<i>Prisoners</i>	5	21	31	0	3	12	62	134	90	67.16	
<i>Suspicious</i>	8	30	45	1	2	1	3	90	75	83.33	
<i>Ambush</i>	0	0	0	0	0	0	0	0	0	0	
<i>Mentally</i>	3	2	17	3	0	0	4	29	27	93.10	
<i>Traffic</i>	11	53	69	3	0	1	0	137	101	73.72	
<i>All Other</i>	11	29	57	3	2	5	11	118	104	88.13	
<i>Total</i>	90	279	572	16	21	33	130	1141	943	82.64	

January 16, 2007

Assaults on Law Enforcement Officers 2005

Twenty-Four Hour Trend

<i>Time</i>	<i>A.M.</i>	<i>P.M.</i>
<i>12:01 - 2:00</i>	180	69
<i>2:01 - 4:00</i>	124	84
<i>4:01 - 6:00</i>	41	86
<i>6:01 - 8:00</i>	24	100
<i>8:01 - 10:00</i>	37	151
<i>10:01 - 12:00</i>	61	188
<i>Total</i>	467	678

Assaults on Law Enforcement Officers 2005

Occurrence of Injury by Weapon

	<i>With Injury</i>	<i>Without</i>	<i>Total</i>
<i>Firearm</i>	1	20	21
<i>Knife</i>	3	24	27
<i>Other Weapon</i>	10	94	104
<i>Hands, Fists, Feet, Etc</i>	120	873	993
<i>Total</i>	134	1011	1145

Assaults on Law Enforcement Officers 2005

Weapon Use by Circumstance

	<i>Firearms</i>	<i>Knife</i>	<i>Other Weapon</i>	<i>Hands, Fist Feet, Etc.</i>	<i>Total</i>
<i>Disturbance</i>	6	18	26	364	414
<i>Burglary</i>	0	0	3	9	12
<i>Robbery</i>	3	0	0	7	10
<i>Other Arrest</i>	3	3	19	167	192
<i>Civil Disorder</i>	0	1	1	3	5
<i>Prisoners</i>	0	1	1	134	136
<i>Suspicious</i>	3	5	14	68	90
<i>Ambush</i>	0	0	0	0	0
<i>Mentally Disturbed</i>	1	0	0	29	30
<i>Traffic</i>	5	0	34	98	137
<i>All Other</i>	3	1	17	98	119
<i>Total</i>	24	29	115	977	1145