

**GSFC JPSS CMO
November 8, 2013
Released**

**Joint Polar Satellite System (JPSS) Ground Project
Code 474
474-00085**

Joint Polar Satellite System (JPSS) Operational Algorithm Description (OAD)

Document for VIIRS Cloud Cover/Layers (CCL) and Generate Cloud EDR (GCE) Software

For Public Release

The information provided herein does not contain technical data as defined in the International Traffic in Arms Regulations (ITAR) 22 CFC 120.10. This document has been approved For Public Release to the NOAA Comprehensive Large Array-data Stewardship System (CLASS).



**Goddard Space Flight Center
Greenbelt, Maryland**

National Aeronautics and
Space Administration

**Joint Polar Satellite System (JPSS)
Operational Algorithm Description (OAD) Document for
VIIRS Cloud Cover/Layers (CCL) and Generate Cloud
EDR (GCE) Software
JPSS Electronic Signature Page**

Prepared By:

Bonnie Reed
JPSS Data Products and Algorithms EDR Lead
(Electronic Approvals available online at (https://jpssmis.gsfc.nasa.gov/mainmenu_dsp.cfm))

Approved By:

Eric Gottshall
DPA Manager
(Electronic Approvals available online at (https://jpssmis.gsfc.nasa.gov/mainmenu_dsp.cfm))

**Goddard Space Flight Center
Greenbelt, Maryland**

Preface

This document is under JPSS Ground Algorithm ERB configuration control. Once this document is approved, JPSS approved changes are handled in accordance with Class I and Class II change control requirements as described in the JPSS Configuration Management Procedures, and changes to this document shall be made by complete revision.

Any questions should be addressed to:

JPSS Configuration Management Office
NASA/GSFC
Code 474
Greenbelt, MD 20771

Change History Log

Revision	Effective Date	Description of Changes (Reference the CCR & CCB/ERB Approve Date)
Original	06/03/2011	474-CCR-11-0100: This version baselines D39590, Operational Algorithm Description Document for VIIRS Cloud Cover/Layers (CCL) and Generate Cloud EDR (GCE) Software, Rev B dated 03/17/2010 as a JPSS document, version Rev -. This is the version that was approved for NPP launch. Per NPOESS CDFCB - External, Volume V – Metadata, doc number D34862-05, this has been approved for Public Release into CLASS. This CCR was approved by the JPSS Algorithm ERB on June 3, 2011.
Revision A	01/18/2012	474-CCR-11-0266: This version baselines 474-00085, Joint Polar Satellite System (JPSS) Operational Algorithm Description (OAD) Document for VIIRS Cloud Cover/Layers (CCL) and Generate Cloud EDR (GCE) Software, for the Mx6 IDPS release. This CCR was approved by the JPSS Algorithm ERB on January 18, 2012.
Revision B	10/09/2012	474-CCR-11-0627: This version authorizes 474-00085, Joint Polar Satellite System (JPSS) Operational Algorithm Description (OAD) Document for VIIRS Cloud Cover/Layers (CCL) and Generate Cloud EDR (GCE) Software, for the Mx6.1 – 6.3 IDPS releases. Includes ECR-ALG-0035 which contains Raytheon PCR030752, OAD: Implement 474-CCR-12-0402 (Add Mirror Side Information to VIIRS CCL/GCE OAD) (ADR 4703), updated Table 14 and various references.
Revision C	05/14/2013	474-CCR-13-0948: This version authorizes 474-00085, JPSS OAD Document for VIIRS CCL & GCE EDR Software, for the Mx 7.0 IDPS release. Includes Raytheon PCR032720; 474-CCR-13-0916/ECR-ALG-0037: Update applicable OAD filenames/template/Rev/etc. for Mx7 Release.
Revision D	11/06/2013	474-CCR-13-1288: This version authorizes 474-00085, JPSS OAD Document for VIIRS CCL & GCE EDR Software, for the Mx 8.0 IDPS release. Includes administrative changes authorized by interoffice memo and Raytheon PCR034611; OAD: PRO: 474-CCR-13-1032: VIIRS Generate Cloud EDR (GCE) ADR7037 - Remove Sun glint Over Land from Cell-level Overall Quality Calculation, in Table 18.



NATIONAL POLAR-ORBITING OPERATIONAL ENVIRONMENTAL SATELLITE SYSTEM (NPOESS)

OPERATIONAL ALGORITHM DESCRIPTION DOCUMENT FOR VIIRS CLOUD COVER/LAYERS (CCL) AND GENERATE CLOUD EDR (GCE)

**SDRL No. S141
SYSTEM SPECIFICATION SS22-0096**

**RAYTHEON COMPANY
INTELLIGENCE AND INFORMATION SYSTEMS (IIS)
NPOESS PROGRAM
OMAHA, NEBRASKA**

**Copyright © 2005-2011
Raytheon Company
Unpublished Work
ALL RIGHTS RESERVED**

Portions of this work are the copyrighted work of Raytheon. However, other entities may own copyrights in this work. Therefore, the recipient should not imply that Raytheon is the only copyright owner in this work.

This data was developed pursuant to Contract Number F04701-02-C-0502 with the US Government under subcontract number 7600002744. The US Government's rights in and to this copyrighted data are as specified in DFAR 252.227-7013, which was made part of the above contract.

IAW DFAR 252.227-7036, Raytheon hereby declares that, to the best of its knowledge and belief, the technical data delivered under Subcontract No. 7600002744 is complete, accurate, and complies with all requirements of the Subcontract.

TITLE: NATIONAL POLAR-ORBITING OPERATIONAL ENVIRONMENTAL SATELLITE SYSTEM (NPOESS) OPERATIONAL ALGORITHM DESCRIPTION DOCUMENT FOR VIIRS CLOUD COVER/LAYERS (CCL) AND GENERATE CLOUD EDR (GCE)

APPROVAL SIGNATURES:



17 Mar 2010

Stephen E. Ellefson
ING/PRO Lead

Date



17 Mar 2010

Gabriela Ostler
Mission Assurance and Enterprise Effectiveness (MAEE)

Date

Northrop Grumman Space & Mission Systems Corp.
 Space Technology
 One Space Park
 Redondo Beach, CA 90278



**Engineering & Manufacturing Development (EMD) Phase
 Acquisitions & Operations Contract**


CAGE NO. 11982

**Operational Algorithm Description Document for the
 VIIRS Cloud Cover/Layers (CCL) and Generate
 Cloud EDR (GCE) Software**


**Document Number: D39590
 Revision: C5**

Document Date: Nov 14, 2011

PREPARED BY:

<hr/> Eric Wong <i>Date</i> <i>AM & S Algorithm Lead</i>	<div style="text-align: right;">  17 Mar 2010 </div> <hr/> Paul D. Siebels <i>Date</i> <i>IDPS PRO SW Manager</i>
--	--



ELECTRONIC APPROVAL SIGNATURES:



<hr/> Roy Tsugawa <i>Date</i> <i>A&DP Lead & ACCB Chair</i>	<div style="text-align: right;">  17 Mar 2010 </div> <hr/> Stephen E. Ellefson <i>Date</i> <i>IDPS Processing SI Lead</i>
<hr/> Bob Hughes <i>Date</i> <i>A&DP Deputy & ARB Chair</i>	

Prepared by
 Northrop Grumman Space & Mission Systems Corp.
 Space Technology
 One Space Park
 Redondo Beach, CA 90278

Prepared for
Department of the Air Force
 NPOESS Integrated Program Office
 C/O SMC/CIK
 2420 Vela Way, Suite 1467-A8
 Los Angeles AFB, CA 90245-4659

Under
Contract No. F04701-02-C-0502
 This document has been identified per the NPOESS Common Data Format Control Book – External Volume 5 Metadata, D34862-05, Appendix B as a document to be provided to the NOAA Comprehensive Large Array-data Stewardship System (CLASS) via the delivery of NPOESS Document Release Packages to CLASS.

Northrop Grumman Space & Mission Systems Corp. Space Technology One Space Park Redondo Beach, CA 90278		 	
Revision/Change Record		Document Number	D39590
Revision	Document Date	Revision/Change Description	Pages Affected
--	12-23-04	Initial Release to NGST for P1187-SW-I-017; TM # NP-EMD.2005.510.0077 already implemented.	All
A1	1-21-05	<u>Initial PCIM Release. ECR A046</u> Release as Document D39590, SPCR 736 Correct various typos and formatting nits Update to referenced documents Update to CCL Processing chain diagram to use Corrected IPs Update CCL/GCE Input table to use Corrected Ips State in CCL Cloud Cover and CCL EDR output tables that Total Cloud Cover output is cloud fraction <i>summed</i> over all layers instead of <i>averaged</i> Add comment regarding future implementation of GCE quality flags, add TBD addressing this issue to TBD table Add content to Test Procedure and Results sections for CCL and GCE.	All various 1 3 5 9, 12 1, 19 24, 27
A2	6-12-05	Implementation of quality flags and function arguments per SPCR ALG 629.	All
A3	6-12-05	Implementation of CCL logic based on AER doc P1187-SW-I-017_CCL_and_GCE-OAD.doc SPCR ALG 843.	21
A4	3-22-06	Reflects Raytheon-Omaha's initial edits for Science To Operational (Sci2Ops) Code Conversion Process, adding Raytheon coversheet, title/signature page, etc. Updated coversheet copyright; replaced old Unit Test with the latest 16Feb06 version; did other edits per Omaha QA comments posted for I-P-O CUTPR and TM # NP-EMD.2006.510.0007. Removed Sections 2.3.6.15 through 2.3.6.20 per the PRO SW engineer working the GCE algorithm. Renamed Figures 1 and 2 to differentiate CCL versus GCE processing chain then updated List of Figures.	All
A5	12-6-06	Updated for error handling and data quality, combining 2 ccl outputs into 1, Figure 1, Tables 1 and 10, Sections 2.2, 2.3.4, and 4.4.	3,5,8,26,36
A6	1-6-07	Updated per EH DQ DDPR reviewer comments.	All
A7	1-19-07	Updated per Optimization DDPR review comments.	All
A8	2-15-07	Final update of CCL portion per new OAD template format.	All
A9	2-16-07	Delivered to NGST.	All

Northrop Grumman Space & Mission Systems Corp. Space Technology One Space Park Redondo Beach, CA 90278		 	
Revision/Change Record		Document Number	D39590
Revision	Document Date	Revision/Change Description	Pages Affected
A10	4-26-07	Updated for TM # NP-EMD.2005.510.0038. Updated Section 2.1.2 to include information regarding reading the last scan from the previous granule and the first scan of the next granule and supply this information to the algorithm for processing. Removed EdgeHandlingMode row from Table 11 since field was not used. Updated Table 12, added missing value.	All
A11	5-30-07	Updated per GCE sci2ops error handling and data quality. Removed granule flags from EDRs (they are now posted to metadata). Added summaries for GCE functions. Updated per code completion review comments.	All
A12	6-14-07	Updated GCE portion to new format: updated tables including listing quality flags at the bit-level; modified figures; updated function descriptions and removed input/output tables for functions; added tech memos to reference doc table. Updated CCL portion for output product names.	All
A13	6-15-07	Delivered to NGST.	All
A14	6-26-07	Update scale and offset to Float32.	27-32
A15	7-12-07	Added cell_copy_out() per fix in PCR013942.	18,20
A16	8-9-07	TM NP-EMD.2007.510.0034 is implemented in CCL in B1.5.	All
A17	8-20-07	Removed scaling coefficients from GCE Coefficients table (Table 17), scaling of products is now performed in common code (i.e. ProCmnProductDictionary) instead.	25
A18	10-24-07	Made corrections for flipped layer assignments. Delivered OAD to NGST.	All
A19	11-9-07	Added spacecraft position, velocity, and attitude to geolocation output. Responded to ECR A-122 PR comments.	14-15
A20	12-17-07	ECR A-103 Updates: added many new fields to the output geolocation structure and added a new method assignScanLevelGeolocationData().	All
A21	7-10-08	Accepted track changes. Rewrote DQN text.	All
A22	7-23-08	Prepared for delivery to ACCB. Updated Acronym list and references. Implemented new cover sheet from NGST.	All
A	9-2-08	ECR A-167. Incorporated interim changes and addressed TIM comments.	All
B1	10-20-08	Modify Cloud Cover Layers Algorithm (CCL) to read the new cloud mask bits and fix software bugs identified by IDPS(tech memo -NP-EMD-2008.510.0017). Also removed the flipped layer code from CCL. Test results were delivered to NGST (GR_SE_EMD_16294)	3 and 19
B2	11-09-08	Modified GCE algorithm to re-implement TM NP-EMD.2007.510.0034.	37



Northrop Grumman Space & Mission Systems Corp. Space Technology One Space Park Redondo Beach, CA 90278		 	
Revision/Change Record		Document Number	D39590
Revision	Document Date	Revision/Change Description	Pages Affected
B3	5-21-09	Tech Memo NP-EMD.2008.510.0069, Rev A. Update Generate cloud EDRs Code to be consistent with System Spec Rev N	1, 9, 10, 27
B4	8-13-09	Updated TBD01 (PCR019987)	Tables 19 & 32
B5	11-04-09	Updated for SDRL	All
B6	01-13-10	Implemented NP-EMD.2009.510.0048 Rev A VIIRS Geo Quality Flags Logic Updates	Table 14
B7	01-20-10	Implemented NP-EMD.2009.510.0072 Fix software bug in cloud layering in the Generate Cloud EDRs Algorithm, and prepared for TIM/ARB	2.2.2.14, 2.2.2.15
B	03-17-10	Incorporated comments from TIM and prepared for ACCB	All
C1	08-27-10	ECR1061/PCR024068 update output product ranges	2.2.1.2
C2	10-11-10	Updated due to document convergence including TM 2010.510.0013 and other administrative edits.	All
C3	09-21-11	Updated for PCR026486	21
C4	09-27-11	Updated OAD for PCR026627.	3, 7
C5	11-14-11	Updated for PCR027776	Table 7

Table of Contents

1.0 INTRODUCTION..... 1

 1.1 Objective..... 1

 1.2 Scope 1

 1.3 References 2

 1.3.1 Document References 2

 1.3.2 Source Code References 5

2.0 ALGORITHM OVERVIEW 6

 2.1 CCL Description 6

 2.1.1 Interfaces 7

 2.1.1.1 Inputs 8

 2.1.1.2 Outputs 14

 2.1.2 Algorithm Processing..... 18

 2.1.2.1 Main Module - cclDriver()..... 21

 2.1.2.2 setScan()..... 21

 2.1.2.3 ccl_cluster()..... 22

 2.1.2.4 ccl_product() 22

 2.1.2.5 cell_copy_out()..... 23

 2.1.2.6 recalcClusters() 23

 2.1.2.7 cloudDist()..... 23

 2.1.2.8 normDist () 23

 2.1.2.9 mbkm_first_guess() 24

 2.1.2.10 ekm_first_guess() 24

 2.1.2.11 apply_kmeans() 24

 2.1.2.12 assign_cloud_type ()..... 25

 2.1.2.13 produceQualityFlags ()..... 25

 2.1.2.14 fillOutputs()..... 25

 2.1.2.15 loadAggTbl() 25

 2.1.2.16 getAggCell() 25

 2.1.2.17 assignScanLevelGeolocationData()..... 25

 2.1.3 Graceful Degradation..... 25

 2.1.4 Exception Handling 26

 2.1.5 Data Quality Monitoring 26

 2.1.6 Computational Precision Requirements 26

 2.1.7 Algorithm Support Considerations 26

 2.1.8 Assumptions and Limitations 26

2.2	GCE Description.....	27
2.2.1	Interfaces	27
2.2.1.1	Inputs	28
2.2.1.2	Outputs	29
2.2.2	Algorithm Processing.....	39
2.2.2.1	Main Module – GCE_main()	40
2.2.2.2	getScan()	41
2.2.2.3	average2d().....	41
2.2.2.4	average3d().....	41
2.2.2.5	Aggregate()	41
2.2.2.6	Height_Conversion()	41
2.2.2.7	posOutdata()	41
2.2.2.8	put_4_level()	41
2.2.2.9	put_dominant().....	41
2.2.2.10	QF_Lyr_2d().....	42
2.2.2.11	QF_Lyr_3d().....	42
2.2.2.12	QF_2d().....	42
2.2.2.13	ComputeGranuleQualityFlags()	42
2.2.2.14	sortLyrOrder()	42
2.2.2.15	sort_lyrs()	42
2.2.2.16	loadAggTbl()	43
2.2.2.17	getAggCell().....	43
2.2.3	Graceful Degradation.....	43
2.2.4	Exception Handling.....	43
2.2.5	Data Quality Monitoring	43
2.2.5.1	Quality Flags	43
2.2.6	Computational Precision Requirements	44
2.2.7	Algorithm Support Considerations	44
2.2.8	Assumptions and Limitations	44
3.0	GLOSSARY/ACRONYM LIST	45
3.1	Glossary	45
3.2	Acronyms.....	48
4.0	OPEN ISSUES.....	50

List of Figures

Figure 1. CCL Algorithm Overview 7
 Figure 2. Cloud Cover Layers Overall Flow Diagram 8
 Figure 3. Conceptual Process for Cloud Cover Layers..... 18
 Figure 4. GCE Algorithm Overview 27
 Figure 5. Generate Cloud EDRs Overall Flow Diagram 28
 Figure 6. Conceptual Process for Generate Cloud EDRs..... 40

List of Tables

Table 1. Reference Documents 2
 Table 2. Source Code References..... 5
 Table 3. Fill Values 9
 Table 4. CCL/GCE Inputs Summary 9
 Table 5. CCL/GCE: VIIRS SDR Moderate Resolution GEO Auxiliary Data Inputs 10
 Table 6. CCL/GCE Input: VIIRS Parallax Corrected Cloud Mask IP..... 10
 Table 7. CCL/GCE Input: VIIRS Parallax Corrected Cloud Optical Properties IP..... 11
 Table 8. CCL/GCE Input: VIIRS Parallax Corrected Cloud Top Parameters IP 12
 Table 9. CCL/GCE VIIRS Cloud Aggregation LUT Auxiliary Data Inputs 13
 Table 10. CCL VIIRS Cloud Type LUT Auxiliary Data Inputs 13
 Table 11. CCL Tunable Parameters and Processing Coefficients..... 14
 Table 12. CCL Output: VIIRS Cloud Layer Type IP..... 15
 Table 13. CCL Output: VIIRS Cloud Cover Type IP 15
 Table 14. CCL Output: VIIRS Cloud Aggregate GEO..... 16
 Table 15. CCL/GCE Aggregation Tables..... 21
 Table 16. GCE Input: VIIRS Cloud Base Height IP 29
 Table 17. GCE Tunable Parameters and Processing Coefficients 29
 Table 18. Layered and Total Quality Flags (QF_LYR_CLOUD) for Horizontal Cell..... 30
 Table 19. Non-cloud Related Quality Flags (QF_CLOUD) for a Horizontal Cell..... 30
 Table 20. GCE Output: VIIRS CBH EDR..... 31
 Table 21. GCE Output: VIIRS CCL EDR 32
 Table 22. GCE Output: VIIRS CEPS EDR..... 33
 Table 23. GCE Output: VIIRS COT EDR..... 34
 Table 24. GCE Output: VIIRS CTH EDR 34
 Table 25. GCE Output: VIIRS CTP (Pressure) EDR 36
 Table 26. GCE Output: VIIRS CTT EDR 36
 Table 27. GCE (Optional) Output: VIIRS CCL FEDR (Full Resolution) 38

Table 28. GCE (Optional) Output: VIIRS CTH FEDR (Full Resolution) 38
Table 29. GCE (Optional) Output: VIIRS CTP (Pressure) FEDR (Full Resolution) 39
Table 30. Glossary 45
Table 31. Acronyms 48
Table 32. TBXs 50

1.0 INTRODUCTION

1.1 Objective

The purpose of an Operational Algorithm Description (OAD) document is to express, in computer-science terms, the remote sensing algorithms that produce the National Polar-Orbiting Operational Environmental Satellite System (NPOESS) end-user data products. These products are individually known as Raw Data Records (RDRs), Temperature Data Records (TDRs), Sensor Data Records (SDRs) and Environmental Data Records (EDRs). In addition, any Intermediate Products (IPs) produced in the process are also described in the OAD.

The science basis of an algorithm is described in a corresponding Algorithm Theoretical Basis Document (ATBD). The OAD provides a software description of that science as implemented in the operational ground system -- the Data Processing Element (DPE).

The purpose of an OAD is two-fold:

1. Provide initial implementation design guidance to the operational software developer.
2. Capture the "as-built" operational implementation of the algorithm reflecting any changes needed to meet operational performance/design requirements.

An individual OAD document describes one or more algorithms used in the production of one or more data products. There is a general, but not strict, one-to-one correspondence between OAD and ATBD documents.

1.2 Scope

The scope of this document is limited to the description of the core operational algorithm(s) required to create the CCL related outputs:

VIIRS Cloud Layer Type IP
VIIRS Cloud Cover Type IP
VIIRS Cloud Aggregate Geolocation (GEO)

and the GCE related outputs:

VIIRS Cloud Base Height (CBH) EDR
VIIRS Cloud Cover/Layers (CCL) EDR
VIIRS Cloud Effective Particle Size (CEPS) EDR
VIIRS Cloud Optical Thickness (COT) EDR
VIIRS Cloud Top Height (CTH) EDR
VIIRS Cloud Top Pressure (CTP) EDR
VIIRS Cloud Top Temperature (CTT) EDR).

Note: GCE is referred to as Grid Cloud EDRs in some supporting documentation. The theoretical basis for these algorithms is described in the Cloud Cover/Layers Visible/Infrared Imager/Radiometer Suite ATBD.

The theoretical basis for the CCL and GCE algorithms are described in Sections 4.2 and 4.3, respectively, of the Cloud Cover/Layers Algorithm Theoretical Basis Document (ATBD), 474-00044.

1.3 References

1.3.1 Document References

The science and system engineering documents relevant to the algorithms described in this OAD are listed in Table 1.

Table 1. Reference Documents

Document Title	Document Number/Revision	Revision Date
Joint Polar Satellite System (JPSS) VIIRS Cloud Cover/Layers Algorithm Theoretical Basis Document (ATBD)	474-00044	Latest
JPSS Environmental Data Record (EDR) Production Report (PR) for NPP	474-00012	Latest
JPSS Environmental Data Record (EDR) Interdependency Report (IR) for NPP	474-00007	Latest
NPP Mission Data Format Control Book and App A (MDFCB)	429-05-02-42_MDFCB	Latest
JPSS Data Format Control Book – Internal Volume III – Retained Intermediate Product Formats (IDFCB) – Block 1.2.3	474-00020-03-B0123 IDFCB Vol III	Latest
JPSS Common Data Format Control Book - External - -- Block 1.2.2 (All Volumes)	474-00001-01-B0122 CDFCB-X Vol I 474-00001-02-B0122 CDFCB-X Vol II 474-00001-03-B0122 CDFCB-X Vol III 474-00001-04-01-B0122 CDFCB-X Vol IV Part 1 474-00001-04-02-B0122 CDFCB-X Vol IV Part 2 474-00001-04-03-B0122 CDFCB-X Vol IV Part 3 474-00001-04-04-B0122 CDFCB-X Vol IV Part 4 474-00001-05-B0122 CDFCB-X Vol V 474-00001-06-B0122 CDFCB-X Vol VI 474-00001-08-B0122 CDFCB-X Vol VIII	Latest
JPSS Common Data Format Control Book - External - Block 1.2.3 (All Volumes)	474-00001-01-B0123 CDFCB-X Vol I 474-00001-02-B0123 CDFCB-X Vol II 474-00001-03-B0123 CDFCB-X Vol III 474-00001-04-01-B0123 CDFCB-X Vol IV Part 1 474-00001-04-02-B0123 CDFCB-X Vol IV Part 2 474-00001-04-03-B0123 CDFCB-X	Latest

Document Title	Document Number/Revision	Revision Date
	Vol IV Part 3 474-00001-04-04-B0123 CDFCB-X Vol IV Part 4 474-00001-05-B0123 CDFCB-X Vol V 474-00001-06-B0123 CDFCB-X Vol VI 474-00001-08-B0123 CDFCB-X Vol VIII	
NPP Command and Telemetry (C&T) Handbook	D568423 Rev. C	30 Sep 2008
VIIRS Cloud Cover/Layers Unit Level Detailed Design	P1187-SW-I-015-CCL-DDD Ver. 6 Rev. 3	16 Jun 2005
VIIRS Cloud Module-Level Software Architecture	Y2472 Ver. 5 Rev. 12	Jan 2005
VIIRS Cloud Module Level Interface Control Document	Y3278 Ver. 5 Rev. 9	Oct 2004
VIIRS Cloud Module Data Dictionary	Y0010871 Ver. 5 Rev. 11	Jan 2005
Generate Cloud EDRs (GCE) Unit Level Detailed Design	P1187-SW-I-016-GCE-DDD Ver. 6 Rev. 1	Jan 2005
Operational Algorithm Description Document for the VIIRS Cloud Optical Properties (COP) Software	474-00074	Latest
Operational Algorithm Description Document for the VIIRS Cloud Top Parameters (CTP) EDR Software	474-00083	Latest
Operational Algorithm Description Document for the VIIRS Cloud Mask Intermediate Product (VCM IP) Software	474-00062	Latest
Operational Algorithm Description Document for VIIRS Geolocation (GEO) Sensor Data Record (SDR) and Calibration (Cal) SDR Software	474-00090	Latest
NPOESS System Specification	SY15-0007 Ver. E	1 Aug 2002
JPSS CGS Data Processor Inter-subsystem Interface Control Document (DPIS ICD) Vol I – IV	IC60917-IDP-002	Latest
IDPS Processing SI Common IO Design Document	DD60822-IDP-011 Rev. A	21 Jun 2007
Joint Polar Satellite System (JPSS) Program Lexicon	470-00041	Latest
Operational Algorithm Description Document for the VIIRS Perform Parallax Correction (PPC) Software	474-00088	Latest
IDPS Scaled Integers Proposed Solution	NP-IDPS-226	13 Jul 2005
NGST/SE technical memo – Cross-granule Processing Memo	NP-EMD.2005.510.0038	7 Mar 2005
NGST/SE technical memo – VIIRS Cloud Mask (VCM) OAD Update	NP-EMD.2004.510.0050	3 Dec 2004
NGST/SE technical memo – MS Engineering Memo_CCL_GCE OAD Update	NP-EMD.2005.510.0077	7 Jul 2005
NGST/SE technical memo – NPP_VIIRS_GCE_QF Defns SPCR ALG980	NP-EMD.2006.510.0007	31 Jan 2006
NGST/SE technical memo – NPP_VIIRS_CCL_ARRAYS_INITIALIZATION	NP-EMD.2006.510.0057	7 Aug 2006
NGST/SE technical memo – NPP_VIIRS_GCE_LAYER_ORDERING_RevA	NP-EMD.2007.510.0034 Rev. A	8 Jun 2007
NGST/SE technical memo – NP-EMD- 2008.510.0017_NPP_VIIRS_CCL_bug_fixes_and_new_ cloud_mask	NP-EMD-2008.510.0017	26 Mar 2008
NGAS/AM&S technical memo –	NP-EMD.2008.510.0059	06 Nov 2008

Document Title	Document Number/Revision	Revision Date
NPP_VIIRS_CCL_Cloud_Layer_Type_mismatch		
NGAS/AM&S technical memo – Update Generate cloud EDRs to be consistent with System Spec Rev N	NP-EMD.2008.510.0069	4 Dec 2008
NGAS/SE technical memo – VIIRS Geo Quality Flags Logic Updates (PCR21471)	NP-EMD.2009.510.0048 Rev A	12 Oct 2009
NGAS/AM&S technical memo – VIIRS_NPP_GCE_bug_fix_in_layering (PCR22174)	NP-EMD.2009.510.0072	3 Dec 2009
NGAS/SE technical memo – PC_OAD_Last_Drop_Corrections	NP-EMD.2010.510.0013	22 Sep 2010
NGAS/SE technical memo – Modify CCL and GCE to correct an error in the aggregation of latitude and longitude	NP-EMD.2011.510.0004	11 Feb 2011
Joint Polar Satellite System (JPSS) Common Ground System (CGS) IDPS PRO Software User’s Manual Part 2	UG60917-IDP-026-	Latest

1.3.2 Source Code References

The science and operational code and associated documentation relevant to the algorithms described in this OAD are listed in Table 2.

Table 2. Source Code References

Reference Title	Reference Tag/Revision	Revision Date
VIIRS Cloud Cover/Layers – science-grade software	ISTN_VIIRS_NGST_3.5 Ver. 6 Rev. 3 (ECR A-057)	10 Aug 2005
VIIRS Cloud Cover/Layers – operational software	/PRO/EDR/VIIRS/clouds/ccl/ B1.5 Ver. D.1.1.6	01 Feb 2007
VIIRS Generate Cloud EDRs – science-grade software	ISTN_VIIRS_NGST_3.5 Ver. 6 Rev. 3 (ECR A-057)	10 Aug 2005
VIIRS Generate Cloud EDRs – operational software	/PRO/EDR/VIIRS/clouds/gce/ B1.5	Oct 2007
VIIRS Cloud Cover/Layers/ Generate Cloud EDRs – science-grade software	ISTN_VIIRS_NGST_3.5.1_DATA	21 Dec 2006
VIIRS Cloud Cover/Layers – science-grade software Includes TM: NP-EMD-2008.510.0017	ISTN_VIIRS_NGST_3.5.4_DATA (ECR A150 & A151)	16 Sep 2008
VIIRS Cloud Cover/Layers – operational software	B1.5x1 (OAD Rev B1)	26 Mar 2008
Modified GCE algorithm to re-implement TM NP-EMD.2007.510.0034.	(OAD Rev B2)	09 Nov 2008
VIIRS Cloud Cover/Layers – science-grade software, Includes TM: 2008.510.0059	ISTN_VIIRS_NGST_3.5.6_DATA	19 Nov 2008
VIIRS Generate Cloud EDRs – science-grade software	ISTN_VIIRS_NGST_3.5.7_DATA	29 Jan 2009
NGAS/AM&S technical memo – Update Generate cloud EDRs to be consistent with System Spec Rev N NP-EMD.2008.510. 0069.Rev-A	Build Post-X-I (OAD Rev B3)	26 May 2009
PCR019987	Sensor Characterization Build (SC-2)(OAD Rev B4)	13 Aug 2009
SDRL	OAD Rev B5	04 Nov 2009
Operational Software (Includes PCR21471)	Sensor Characterization (Build SC-6) (OAD Rev B6)	13 Jan 2010
Operational Software (Includes PCR22174)	Sensor Characterization (Build SC-6) (OAD Rev B7)	20 Jan 2010
ACCB (no code changes)	OAD Rev B	17 Mar 2010
ECR1061/PCR024068 update output product ranges	(OAD Rev C1)	27 Aug 2010
Convergence updates (No code updates)	(OAD Rev C2)	11 Oct 2010
PCR025519	Build 1.5.05.05 (OAD not updated)	01 Feb 2011
VIIRS Science Algorithms 3.5.10 (Includes TM 2011.510.0004)	ISTN_VIIRS_NGST_3.5.10_DATA	22 Feb 2011
PCR026486 (OAD Update to 3.5.10_Data) (x-ref PCR026485)	(OAD Rev C3)	21 Sep 2011
PCR026627 (ADL update to OAD)	(OAD Rev C4)	27 Sep 2011
PCR027776 (OAD updated from PCR027775-ISTN_VIIRS_NGST_4.26, ECR-ALG-0026)	(OAD Rev C5)	14 Nov 2011
OAD transitioned to JPSS Program – this table is no longer updated.		

2.0 ALGORITHM OVERVIEW

For this section, the definition of an algorithm is a logical grouping of operational algorithm modules for which there is a single Input-Processing-Output (I-P-O) architecture with a single defined set of external inputs and outputs (e.g., IPs or xDRs).

The retrieval of cloud cover and layers follows execution of the VIIRS CloudMask/Phase algorithm, COP algorithm, and CTP (Parameters) algorithm. These algorithms provide the necessary inputs describing the cloud mask, cloud phase, COP, and CTP (Parameters) for each pixel. The Perform Parallax Correction (PPC) module, which is also executed prior to the CCL, is assumed to produce parallax corrected IPs written in the identical format as the uncorrected IPs. CCL outputs are used as inputs to CBH and GCE modules.

The retrieval of generate cloud EDRs follows execution of the VIIRS CCL and CBH algorithms. The SDR MOD GEO, PPC IPs, CBH IPs, and CCL IPs and GEO are used as inputs to the GCE module. GCE produces EDRs which are end-products of the cloud processing chain and are not used by any other software units. GCE also produces Full resolution EDRs (FEDRs) which are expected to be used by other software units.

2.1 CCL Description

The CCL algorithm is implemented during IP/EDR processing and requires SDR, IP, and Look-Up Table (LUT) inputs to produce IP and GEO outputs. A top-level diagram for the CCL algorithm is shown in Figure 1.

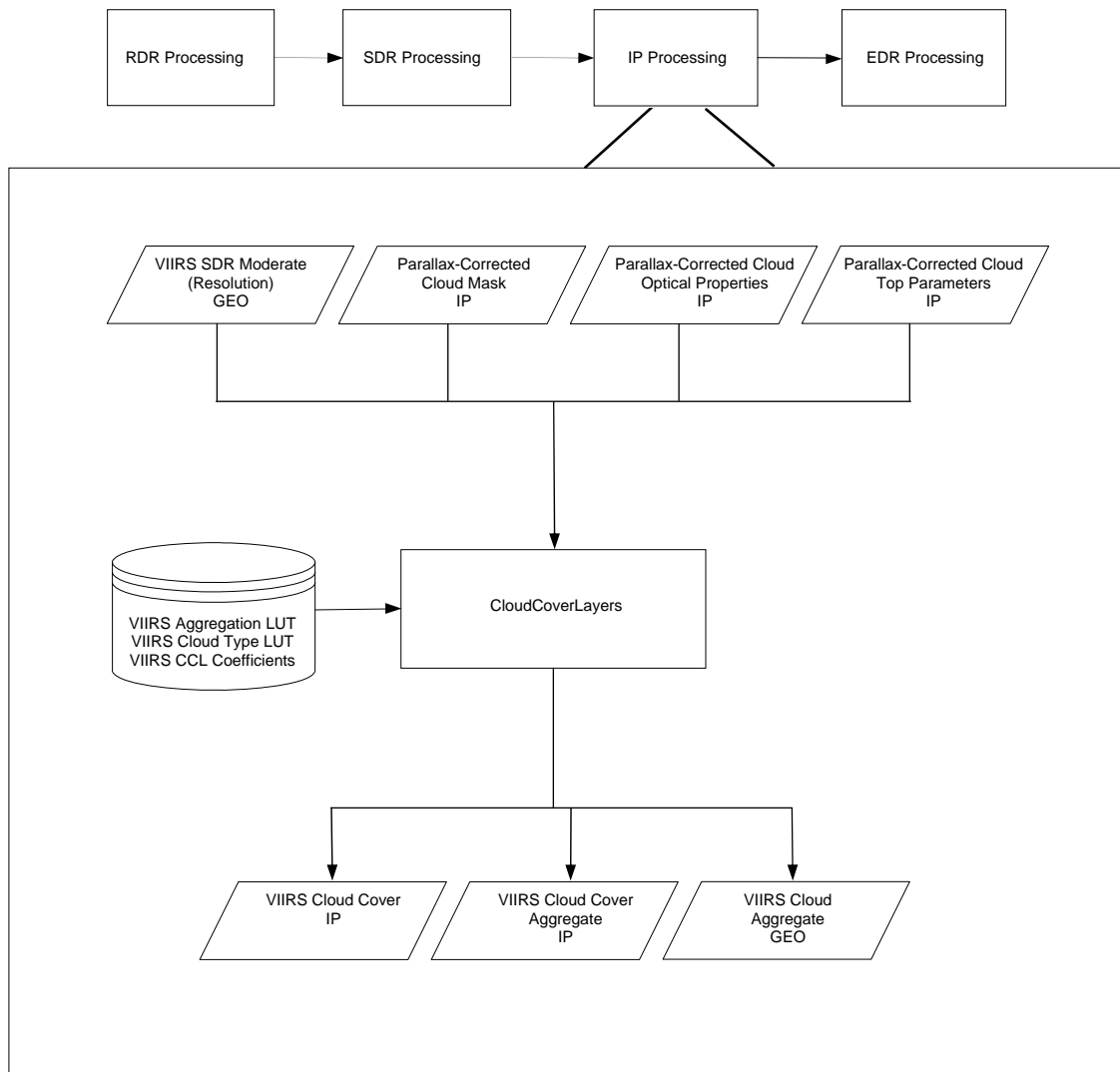


Figure 1. CCL Algorithm Overview

2.1.1 Interfaces

CCL consists of derived and core algorithm modules. The derived algorithm module ProEdrViirsCcl functions as a wrapper for the core algorithm module and handles the I-O stages in the I-P-O architecture. ProEdrViirsCcl initiates the core algorithm module Cloud Cover/Layers which makes up the P stage.

The main flow of the operational CCL algorithm is shown in Figure 2 below. The CCL algorithm gets all the required input data from DMS. When all the input data needed for processing is available, the core algorithm CloudCoverLayers is called to determine cloud cover layers. All inputs from and outputs to DMS are in binary format.

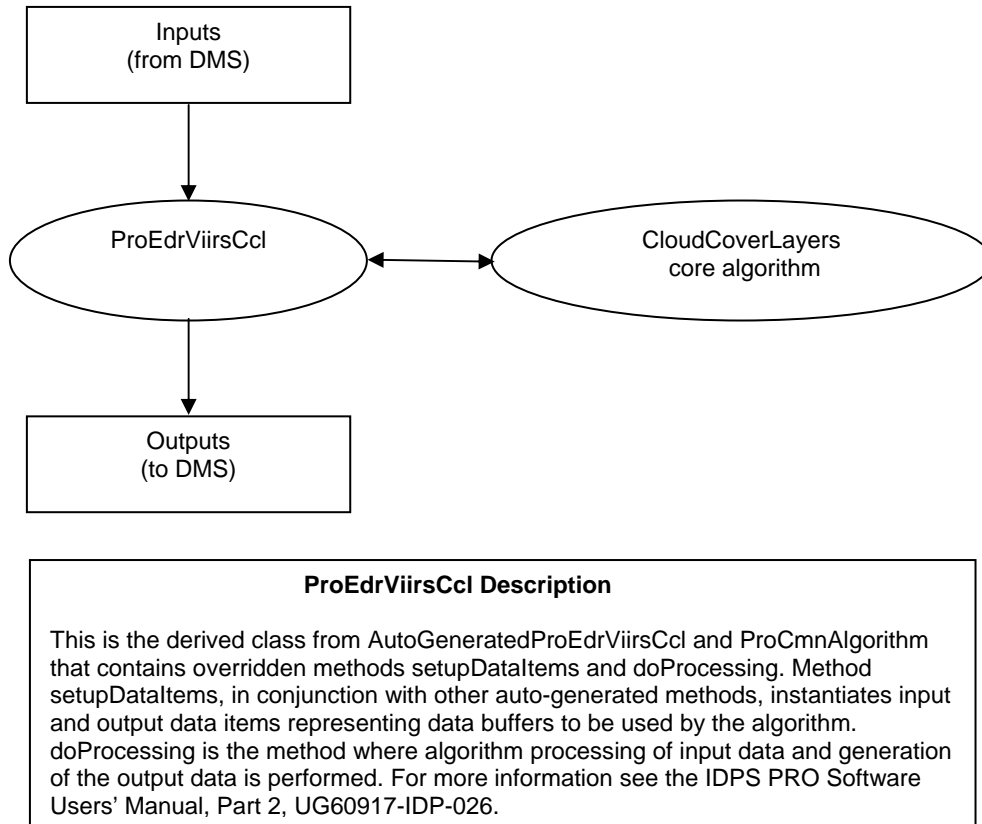


Figure 2. Cloud Cover Layers Overall Flow Diagram

The CCL Module requires VIIRS Moderate Geolocation (GEO), VIIRS Parallax Corrected Cloud Mask (CM) IP, VIIRS Parallax Corrected Cloud Optical Properties (COP) IP, VIIRS Parallax Corrected Cloud Top Parameters (CTP) IP, VIIRS Cloud Aggregation (AGG) LUT, VIIRS Cloud Type LUT, and VIIRS CCL IP Algorithm Coefficients as inputs to produce the following outputs: VIIRS Cloud Layer Type IP, VIIRS Cloud Cover Type IP, VIIRS Cloud Aggregate GEO. A detailed itemization of the inputs and outputs for the CCL Module is provided in Sections 2.1.1.1 and 2.1.1.2. See Section 2.3 of the Cloud Cover/Layers ATBD, 474-00044, for more information.

2.1.1.1 Inputs

Note: For Sections 2.1.1.1, 2.1.1.2, 2.2.1.1, and 2.2.1.2 below, the following applies:

- Fill values corresponding to the individual pixels and horizontal cells in each product that do not contain valid data are dictated by the datatype (see Table 3). Exception: bitwise flags (i.e. cloud mask data, quality flags) are filled with zeros.
- Table Constants
 - M_VIIRS_SDR_ROWS = SCANS PER GRANULE X NUM_MOD_DETECTORS
 - M_VIIRS_SDR_COLS = 3200
 - VIIRS_CLD_HC_ROWS = SCANS PER GRANULE X 2
 - VIIRS_CLD_HC_COLS = 508
 - VIIRS_CLD_LYRS = 4

Table 3. Fill Values

Input	Type	Description	Units/Valid Range
NA_FLOAT32_FILL	Float32	Float32 not applicable fill value	Unitless / -999.9
MISS_FLOAT32_FILL	Float32	Float32 missing fill value	Unitless / -999.8
ONBOARD_PT_FLOAT32_FILL	Float32	Float32 onboard pixel trim fill value	Unitless / -999.7
ONGROUND_PT_FLOAT32_FILL	Float32	Float32 on ground pixel trim fill value	Unitless / -999.6
ERR_FLOAT32_FILL	Float32	Float32 error fill value	Unitless / -999.5
NA_UINT16_FILL	UInt16	UInt16 not applicable fill value	Unitless / 65535
MISS_UINT16_FILL	UInt16	UInt16 missing fill value	Unitless / 65534
ONBOARD_PT_UINT16_FILL	UInt16	UInt16 onboard pixel trim fill value	Unitless / 65533
ONGROUND_PT_UINT16_FILL	UInt16	UInt16 on ground pixel trim fill value	Unitless / 65532
ERR_UINT16_FILL	UInt16	UInt16 error fill value	Unitless / 65531
NA_UINT8_FILL	UInt8	UInt8 not applicable fill value	Unitless / 255
MISS_UINT8_FILL	UInt8	UInt8 missing fill value	Unitless / 254
ONBOARD_PT_UINT8_FILL	UInt8	UInt8 onboard pixel trim fill value	Unitless / 253
ONGROUND_PT_UINT8_FILL	UInt8	UInt8 on ground pixel trim fill value	Unitless / 252
ERR_UINT8_FILL	UInt8	UInt8 error fill value	Unitless/ 251

Many of the inputs are common to both CCL and GCE modules. In addition, the CCL outputs are required as inputs in the GCE. This section describes the algorithm inputs and identifies those inputs required by the CCL and those common to CCL/GCE modules. Table 4 serves as an overview.

Table 4. CCL/GCE Inputs Summary

Source	Parameter	CCL	GCE
SDR Auxiliary	Latitude	Input	
	Longitude	Input	
	Sensor Zenith Angle	Input	
	Solar Zenith Angle		Input
	Actual Scans	Input	Input
Corr. Cloud Mask IP	Cloud Mask	Input	(Optional) Input
Corr. Cloud Optical Properties IP	Cloud Optical Thickness	Input	Input
	Effective Particle Size	Input	Input
	COP Quality		Input
Corr. Cloud Top Parameters IP	Cloud Top Height	Input	Input
	Cloud Top Temperature		Input
	Cloud Top Pressure		Input
	CTP (Parameters) Quality		Input
Cloud Base Height IP	Cloud Base Height		Input
	CBH Quality		Input
Cloud Layer Type IP (pixel level)	Cloud Layer	Output	Input
	Cloud Type	Output	
	CCL Quality	Output	
Cloud Cover Type IP (cell level)	Layer Cloud Cover	Output	Input
	Total Cloud Cover	Output	Input
	Cloud Type	Output	Input
Cloud Aggregate GEO (cell level)	lat	Output	Input
	lon	Output	
VIIRS Aggregation LUT	All	Input	Input

Source	Parameter	CCL	GCE
CCL Cloud Type LUT	All	Input	
CCL Coefficients	All	Input	
GCE Coefficients	All		Input

Tables 5 through 11 describe the variables in each of the input files required by CCL (and, in some cases, GCE) modules. In each case, the variable type is identified, a short description is provided, and the units and range for the variable are identified. No range checking of these inputs is performed in the code. The expected valid range of inputs is provided for reference where known. The data is expected to be non-scaled. Any scaled data is to be un-scaled by the Processing Common Code prior to use in this algorithm.

Table 5. CCL/GCE: VIIRS SDR Moderate Resolution GEO Auxiliary Data Inputs

Input	Type	Description	Units/Valid Range
Latitude	Float32[M_VIIRS_SDR_ROW][M_VIIRS_SDR_COLS]	Latitude of the VIIRS pixels	Radians / $-(\pi/2)(S)$ to $(\pi/2)(N)$
Longitude	Float32[M_VIIRS_SDR_ROW][M_VIIRS_SDR_COLS]	Longitude of the VIIRS pixels	Radians / $-\pi(W)$ to $\pi(E)$
Satellite Zenith	Float32[M_VIIRS_SDR_ROW][M_VIIRS_SDR_COLS]	Satellite Zenith of the VIIRS pixels	Radians / 0 to $\pi/2$
Solar Zenith	Float32[M_VIIRS_SDR_ROW][M_VIIRS_SDR_COLS]	Solar Zenith of the VIIRS pixels	Radians / 0 to π
Actual scans	Int32	Actual number of scans in a granule determined by the sdr (sdr may be less than full)	Unitless / 0 to VIIRS RDR Scans

Table 6. CCL/GCE Input: VIIRS Parallax Corrected Cloud Mask IP

Input	Type	Description	Units/Valid Range
Pixel-Level Data Items			
Cloud confidence	2-bit unsigned field	Cloud Detection Result & Confidence Indicator	0 – Confidently clear 1 – Probably clear 2 – Probably cloudy 3 – Confidently cloudy
Sun glint	2-bit unsigned field	Sun glint	0 – No sun glint 1 – Geometry Based 2 – Wind Speed Based 3 – Geometry & Wind
Cloud phase	3-bit unsigned field	Cloud phase	0 - Not Executed 1 - Clear 2 - Partly Cloudy 3 - Water 4 - Mixed 5 - Opaque Ice 6 - Cirrus 7 - Overlap

Input	Type	Description	Units/Valid Range
Snow ice	1-bit unsigned field	Snow / Ice Surface	0 - Not 1 - Snow/Ice
Land water	3-bit unsigned field	Land / Water Background	0 - Land & Desert 1 - Land no Desert 2 - Inland Water 3 - Sea Water 5 - Coastal

Table 7. CCL/GCE Input: VIIRS Parallax Corrected Cloud Optical Properties IP

Input	Type	Description	Units/Valid Range
Pixel-Level Data Items			
Cot	Float32[M_VIIRS_SDR_ROW][M_VIIRS_SDR_COLS]	Unscaled cloud optical thickness	Unitless / 0.0 minimum
Eps	Float32[M_VIIRS_SDR_ROW][M_VIIRS_SDR_COLS]	Unscaled cloud effective particle size (radius)	microns / 0.0 to 124.0
Cloud phase	3-bit unsigned field	Cloud phase	0 - COP_PHASE_NOT_EXE 1 - COP_PHASE_CIRRUS 2 - COP_PHASE_OPQ_ICE 3 - COP_PHASE_WATER 4 - COP_PHASE_MIXED 5 - COP_PHASE_MUL_LYR
COP_QF_DAY_WATER_CONVERGENCE	1-bit unsigned field	Iteration convergence	0 - Not 1 - Convergent
COP_QF_DAY_ICE_CONVERGENCE	1-bit unsigned field	Iteration convergence	0 - Not 1 - Convergent
COP_QF_WATER_COT_LT1_DAY	1-bit unsigned field	Water cot < 1 at daytime	0 - Not 1 - True
COP_QF_ICE_COT_LT1_DAY	1-bit unsigned field	Ice cot < 1 at daytime	0 - Not 1 - True
COP_QF_WATER_COT_LT1_NIGHT	1-bit unsigned field	Water cot < 1 at nighttime	0 - Not 1 - True
COP_QF_ICE_COT_LT1_NIGHT	1-bit unsigned field	Ice cot < 1 at nighttime	0 - Not 1 - True
COP_QF_CLOUD_CONFIDENCE	1-bit unsigned field	Cloud confidence	0 - Not 1 - Probably/Confidently cloudy
COP_QF_EXCLUDE_SUN_GLINT	1-bit unsigned field	Sun glint	0 - Not 1 - Sun glint
COP_QF_COT_WATER_OUT_OF_BOUNDS	1-bit unsigned field	Water cot out of bound Day: (0.1-30) Night: (0.1-30)	0 - Not 1 - Out of bound
COP_QF_COT_ICE_OUT_OF_BOUNDS	1-bit unsigned field	Ice cot out of bound Day: (0.1-30) Night: (0.5-30)	0 - Not 1 - Out of bound
COP_QF_EPS_WATER_OUT_OF_BOUNDS	1-bit unsigned field	Ice eps out of bound (1-50 micrometers)	0 - Not 1 - Out of bound
COP_QF_EPS_ICE_OUT_OF_BOUNDS	1-bit unsigned field	Water eps out of bound (1-50 micrometers)	0 - Not 1 - Out of bound

Input	Type	Description	Units/Valid Range
COP_QF_DEGRADED_ICE_COT_GT_TEN	1-bit unsigned field	Degraded condition for ice cloud cot > 10	0 – Not 1 – Yes
Bad SDR	2-bit unsigned field	Bad SDR flag data	0 – good 1 – bad 2 – no calibration

Table 8. CCL/GCE Input: VIIRS Parallax Corrected Cloud Top Parameters IP

Input	Type	Description	Units/Valid Range
<i>Pixel-Level Data Items</i>			
Ctt	Float32[M_VIIRS_SDR_ROW][M_VIIRS_SDR_COLS]	Unscaled Cloud Top Temperature	K / 170 to 310
Cth	Float32[M_VIIRS_SDR_ROW][M_VIIRS_SDR_COLS]	Unscaled Cloud Top Height	km / 0 to 30
Ctp	Float32[M_VIIRS_SDR_ROW][M_VIIRS_SDR_COLS]	Unscaled Cloud Top Pressure	hPa / 50.0 to 1100.0
qf_cth_range	1-bit unsigned field	Cloud top height out of range (0-20 km)	0 - Not 1 - Out of range
qf_ctp_range	1-bit unsigned field	Cloud top pressure out of range (50-1050 mb)	0 - Not 1 - Out of range
qf_ctt_range	1-bit unsigned field	Cloud top temperature out of range (175-310 Kelvin)	0 - Not 1 - Out of range
qf_ctp_snowice	1-bit unsigned field	Snow / Ice Surface	0 - Not 1 - Snow/Ice
qf_ctp_surfType	3-bit unsigned field	Surface type	0 - Land desert; 1 - Land not desert; 2 - Inland water; 3 - Sea water; 5 - Coastal
qf_residual_night_water	1-bit unsigned field	IR ice ctt convergence	0 - Not 1 - Convergence
qf_residual_night_ice	1-bit unsigned field	IR ice ctt convergence	0 - Not 1 - Convergence
qf_residual_ir_day_ice	1-bit unsigned field	IR ice ctt convergence	0 - Not 1 - Convergence
qf_ctp_runbackup	3-bit unsigned field	Quality flags for using black cloud approach	0 - clear; 1 - non-day/water convergence 2 - day/water convergence 3 - black cloud 1 convergence 4 - black cloud 2 in bound 5 - black cloud 3 (not used) 7 - nonconvergence

Input	Type	Description	Units/Valid Range
qf_ctp_windowIR_converge	1-bit unsigned field	A quality flag to indicate if WindowIR for daywater clouds converges	0 – not converge 1 – converge

Table 9. CCL/GCE VIIRS Cloud Aggregation LUT Auxiliary Data Inputs

Input	Type	Description	Units/Valid Range
At_agg_cell	Int32	Number of aggregation cells (output) in the along-track direction	Unitless / VIIRS_CLD_HC_ROWS
Xt_agg_cell	Int32	Number of aggregation cells in the cross-track direction	Unitless / VIIRS_CLD_HC_COLS
At_npix	Int32	Number of along track pixels in a swath	Unitless / NUM_MOD_DETECTORS
Xt_npix	Int32	Number of cross track (along scan) pixels in a swath	Unitless / M_VIIRS_SDR_COLS
i_agg_at	Int32[VIIRS_AGG_TBL_ENTRIES]	Index of the aggregation (target) cell in the along-track direction (zero reference)	Unitless / 0 to (VIIRS_CLD_HC_ROWS – 1)
i_agg_xt	Int32[VIIRS_AGG_TBL_ENTRIES]	Index of the target aggregation cell in the cross track direction	Unitless / 0 to (VIIRS_CLD_HC_COLS – 1)
scan	Int32[VIIRS_AGG_TBL_ENTRIES]	Scan (previous scan, current scan, next scan)	Unitless / -1 to +1 -1 = previous 0 = current +1 = next
i_at	Int32[VIIRS_AGG_TBL_ENTRIES]	Along track pixel number (0-base) in the referenced swath	Unitless / 0 to (NUM_MOD_DETECTORS – 1)
i_xt	Int32[VIIRS_AGG_TBL_ENTRIES]	Cross track pixel number (0-base)	Unitless / 0 to (M_VIIRS_SDR_COLS – 1)
agg_type	Int32[VIIRS_AGG_TBL_ENTRIES]	Pixel type: cluster cell only pixel; product cell only pixel; cluster and product cell pixel	Unitless / 0 to 3 1 = Cluster 2 = Product 3 = Product and Cluster

Table 10. CCL VIIRS Cloud Type LUT Auxiliary Data Inputs

Input	Type	Description	Units/Valid Range
height	Float32[CLOUD_TYPE_LAYERS]	Mean cloud top height for stratus, altocumulus, cumulus, cirrus, cirrocumulus clouds	Kilometers / {1.3, 3.5, 3.3, 9.0, 10.5}
size	Float32[CLOUD_TYPE_LAYERS]	Mean cloud effective particle size for stratus, altocumulus, cumulus, cirrus, cirrocumulus clouds	Micrometers / {13.5, 17, 27.5, 55, 75}
op_thick	Float32[CLOUD_TYPE_LAYERS]	Mean cloud optical thickness for stratus, altocumulus, cumulus, cirrus, cirrocumulus clouds	Unitless / { 5.5, 17, 26.5, 2.5, 4.5 }

Table 11. CCL Tunable Parameters and Processing Coefficients

Input	Type	Description	Units/Valid Range
wgtCth	Float32	K-means algorithm cluster assignment weight for cloud top height (0.5 is the reciprocal of 2.0, optimization)	Kilometers / 0.5
wgtCot	Float32	K-means algorithm cluster assignment weight for cloud optical thickness	Unitless / 0.0
wgtEps	Float32	K-means algorithm cluster assignment weight for cloud effective particle size (0.2 is the reciprocal of 5.0, optimization)	Microns / 0.2
wgtPhase	Float32	K-means algorithm cluster assignment weight for cloud phase (2.0 is the reciprocal of 0.5, optimization)	Unitless / 2.0
EkmcThThresh1	Float32	Ekmc_first_guess() threshold on CTH for not splitting layers	0.75
EkmcThThresh2	Float32	Ekmc_first_guess() threshold on CTH variance for splitting layers	1.6
EkmcThThresh3	Float32	Ekmc_first_guess() threshold on CTH separation factor for splitting layers	1.6
Cluster_Flag_Threshold	Float32	Percentage of cloudy product pixels	0.75
CTH_LOW_THRESH	Float32	Mbkm_first_guess() lower CTH threshold	2.5
CTH_MID_THRESH	Float32	Mbkm_first_guess() middle CTH threshold	5.0
CTH_HIGH_THRESH	Float32	Mbkm_first_guess() high CTH threshold	7.5
PHASE_WATER	Float32	Water cloud	0.0
PHASE_MIXED	Float32	Water and ice cloud	0.5
PHASE_ICE	Float32	Ice cloud	1.0
gracefulDegradationMode	UInt8	Switch for handling missing pixel data 0 - use the pixel but omit missing variable from analysis for all pixels 1 - omit the pixel edge from the analysis (pixel is treated as non-cloudy)	Unitless / 0 to 1 0=ignore variable 1=ignore pixel Default = 0
kmeansAlgorithm	UInt8	Switch to select the first guess algorithm for layer analysis	Unitless / 0 to 1 0=MBKM 1=EKM
kmeansMaxIter	UInt8	Maximum number of iterations	3
clusterConvergeCrit	UInt8	Convergence criteria = number of pixel reassignments	14

2.1.1.2 Outputs

For the outputs in this section, see Note 1 in Section 2.1.1.1.

The CCL module writes three output products in binary format: VIIRS Cloud Layer Type IP; VIIRS Cloud Cover Type IP; VIIRS Cloud Aggregate GEO. The VIIRS Cloud Layer Type IP (see Table 12) contains pixel level layer, type, and quality data. The VIIRS Cloud Cover Type IP (see Table 13) contains total cloud cover, layer cloud cover, and layer cloud type for HCs. The VIIRS Cloud Aggregate GEO (see Table 14) is produced separately from the IPs and is intended to be packaged with the output EDR products from GCE by Data Delivery.

Table 12. CCL Output: VIIRS Cloud Layer Type IP

Input	Type	Description	Units/Valid Range
Pixel-Level Data Items			
Cloud_Layer	UInt8[M_VIIRS_SDR_ROWS][M_VIIRS_SDR_COLS]	Pixel-level cloud layer identification	Unitless / 0 to 3 3 <= cth low threshold 2 <= cth mid threshold 1 <= cth high threshold 0 > cth high threshold
Cloud_Type	UInt8[M_VIIRS_SDR_ROWS][M_VIIRS_SDR_COLS]	Pixel-level cloud type identification	Unitless / 1 to 5 1-Stratus 2-Alto Cumulus 3-Cumulus 4-Cirrus 5-CirrusCumulus
CCL_IP_Quality	UInt8[M_VIIRS_SDR_ROWS][M_VIIRS_SDR_COLS]	Pixel level CCL Quality Flags	Bitwise flags
		0-1 Cloud confidence	0-Confidently clear 2-Probably cloudy 3-Confidently cloudy
		2-4 Surface types	0-Land desert 1-Land not desert 2-Inland water 3-Sea water 5-Coastal
		5 Sun glint	0-No sun glint 1-Sun glint
		6 Snow/ice surface	0-No snow/ice 1-Snow/ice
		7 Spare	NA

Table 13. CCL Output: VIIRS Cloud Cover Type IP

Input	Type	Description	Units/Valid Range
Cell-Level Data Items			
Layer_Cloud_Cover	Float32[VIIRS_CLD_HC_ROWS][VIIRS_CLD_HC_COLS][VIIRS_CLD_LYRS]	Cloud fraction for each layer	Unitless / 0 to 1
Total_Cloud_Cover	Float32[VIIRS_CLD_HC_ROWS][VIIRS_CLD_HC_COLS]	Cloud fraction summed over all layers	Unitless / 0 to 1
Cloud_Type	UInt8[VIIRS_CLD_HC_ROWS][VIIRS_CLD_HC_COLS][VIIRS_CLD_LYRS]	Cloud type for each layer	Unitless / 1 to 5 1-Stratus 2-Alto Cumulus 3-Cumulus 4-Cirrus 5-CirrusCumulus

Table 14. CCL Output: VIIRS Cloud Aggregate GEO

Input	Type	Description	Units/Valid Range
Structure Data Items			
Scan Start Time	Int64[VIIRS_RDR_SCANS]	Starting Time of Scan in IET	Microseconds / 0.00 to 1.00E+38
Scan Mid Time	Int64[VIIRS_RDR_SCANS]	Mid Time of Scan in IET	Microseconds / 0.00 to 1.00E+38
Latitude	Float32[VIIRS_CLD_HC_ROWS][VIIRS_CLD_HC_COLS]	Latitude at the center of each horizontal cell grid point	Degrees / -90(S) to +90(N)
Longitude	Float32[VIIRS_CLD_HC_ROWS][VIIRS_CLD_HC_COLS]	Longitude at the center of each horizontal cell grid point	Degrees / -180(W) to +180(E)
Solar Zenith Angle	Float32[VIIRS_CLD_HC_ROWS][VIIRS_CLD_HC_COLS]	Solar Zenith Angle	Degrees / 0 to 180
Solar Azimuth Angle	Float32[VIIRS_CLD_HC_ROWS][VIIRS_CLD_HC_COLS]	Solar Azimuth Angle	Degrees / -180 to 180
Sensor Zenith Angle	Float32[VIIRS_CLD_HC_ROWS][VIIRS_CLD_HC_COLS]	Sensor Zenith Angle	Degrees / 0 to 180
Sensor Azimuth Angle	Float32[VIIRS_CLD_HC_ROWS][VIIRS_CLD_HC_COLS]	Sensor Azimuth Angle	Degrees / -180 to 180
S/C Position	Float32[VIIRS_RDR_SCANS][3]	Spacecraft position in orbit at mid-scan time	Meters / -7.46E+06 to 7.46E+06
S/C Velocity	Float32[VIIRS_RDR_SCANS][3]	Spacecraft velocity in orbit at mid-scan time	Meters per second / -6600 to 6600
S/C Attitude	Float32[VIIRS_RDR_SCANS][3]	Spacecraft attitude in orbit at mid-scan time	Arcseconds / -300 to 300
S/C Solar Zenith Angle	Float32[VIIRS_RDR_SCANS]	Solar zenith angle with respect to the solar diffuser reference frame z-axis, where the SD z-axis is normal to the SD surface.	Degrees / 0 to 180
S/C Solar Azimuth Angle	Float32[VIIRS_RDR_SCANS]	Solar azimuth angle measured counterclockwise about the solar diffuser reference frame z-axis with respect to the solar diffuser x-axis (with positive z-axis towards the observer)	Degrees / 0 to 360

Input	Type	Description	Units/Valid Range	
scanQual	UInt8[VIIRS_RDR_SCANS]	Scan-level quality flags	0-1	Interpolation Stage 0-Nominal 1-Missing data <= small gap 2-Small gap < Missing data <= Granule boundary 3-Missing data > Granule boundary
			2-3	HAM Impulse Flag 0: Good data – all encoder data is valid 1: Bad data – either HAM encoders, RTA encoders or both corrupted for the entire scan 2: Degraded data – either HAM encoders, RTA encoders or both are corrupted within the scan. 3: Missing data – Missing encoder data for the scan (dropped engineering packets)
			4	Above South Atlantic Anomaly 0-False 1-True
			5	Solar Eclipse 0-False 1-True
			6	Spare NA
			7	HAM Side 0-Mirror Side A 1-Mirror Side B
cellQual	UInt8[VIIRS_CLD_HC_ROWS][VIIRS_CLD_HC_COLS]	Cell-level quality flags	0	Invalid Input Data 0-Valid 1-Invalid
			1	Bad pointing 0-Good pointing 1-Bad pointing
			2	Bad Terrain 0-Good terrain 1-Bad terrain
			3	Invalid Solar Angles 0-Valid solar angles 1-Invalid solar angles
			4-7	Spare NA

2.1.2 Algorithm Processing

The purpose of the CCL module is to classify cloudy pixels into as many as four cloud layers and to determine the cloud type for each layer. The module produces Intermediate Products (IPs) that describe the pixel-level assignment of the cloud layers and types plus cloud cover (CC) and cloud type (CT) products generated over horizontal cells (HC) and reported for each of the four layers plus averaged over all layers. See Section 2.5 of the Cloud Cover/Layers ATBD, 474-00044, for more information. The dataflow model for the CCL algorithm is illustrated in Figure 3.

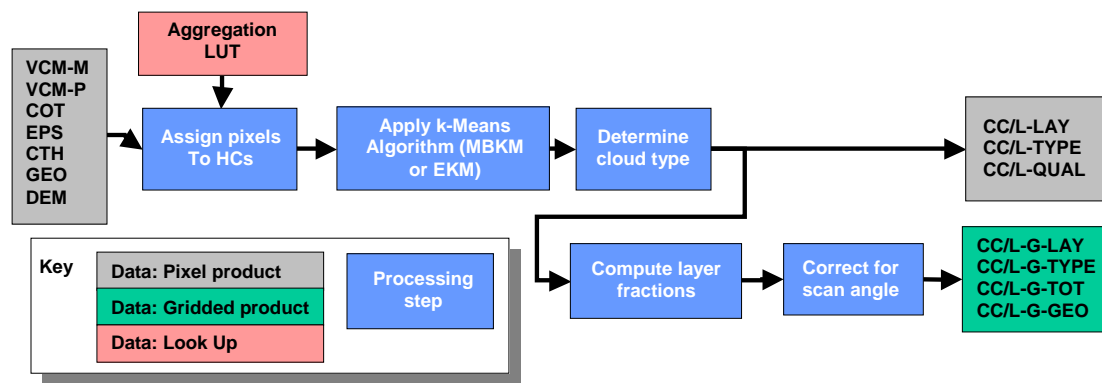


Figure 3. Conceptual Process for Cloud Cover Layers

The CCL reads and processes the data one scan at a time. Horizontal product cells are always comprised of pixels within a single scan. The assignment of pixels to product cells is accomplished using an aggregation table. For each scan line, CCL loops over all product cells and generates outputs based on the pixel-level cloud IPs identified with each cell. The aggregation approach developed for the CCL allows for a larger group of pixels surrounding each HC (or product cell) to better identify the layers via the k-means analysis. This extended region is referred to as the clustering cell. It includes pixels from the adjacent scans. The first and last scan lines in a granule require that the cluster cells contain pixel information from the previous/next scans of the preceding and succeeding granules. To accomplish this, the last scan of the previous granule and the first scan of the next granule is read and passed to the algorithm as the cluster cells when the product cell is the first or last scan. CCL uses a method called setScan() to read the previous, current and next scan input data. The aggregation table is read using loadAggTbl() and the pixels associated with each cell are identified with getAggCell(). The CCL routine keeps data from the previous, current, and next scans in memory as the information from all three scans may be required in the clustering analysis. See Section 2.4 of the Cloud Cover/Layers ATBD, 474-00044, for more information.

Note: It should be noted that reading one scan before and one scan after the current granule differs somewhat from the science code that reads two scans from the previous granule and nothing from the next granule. Using the method defined in the science code would have shifted the output by one scan, therefore the one scan before and the one scan after method was used to avoid shifting the output.

Retrieval Logic

The CCL module uses a preprocessing routine called `cell_copy_in()` which copies the cloud IP data associated with each cell to temporary arrays. Each pixel in the cell is identified as either 1=product, 2=cluster, or 3=product and cluster pixels. In practice, all pixels in the product cell are also used in the clustering analysis so pixels are identified as 1 or 3 in normal operating modes. Pixels assigned to each cell may originate from the previous, current, or next scans; however product pixels are always associated with the current scan. The preprocessing routine also computes the mean latitude, longitude, and sensor zenith angle for the product cell. Logic is included in `cell_copy_in()` to handle missing data. Two options for dealing with missing data are available as configuration parameters. Option 1 sets the k-means cluster weights for COT and EPS to zero if values for these inputs are missing. If CTH is missing, then the pixel is not used in the clustering calculations. Option 2 eliminates any pixel that is missing CTH, COT, or EPS from the k-means clustering evaluation. The k-means weight defaults to the values specified in the configuration file if the input CTH, COT, and EPS are available. Cloud phase is converted to a float with 0.0 indicating water, 0.5 indicating mixed phase, partly cloudy or overlapping cloud, and 1.0 indicating cirrus or opaque ice phase. Any pixels not identified as confident cloudy in the VIIRS cloud mask are treated as clear by the CCL algorithm.

Pixels identified with the overlapping cloud phase are a problem for the CCL routine as these pixels represent information from more than one layer. This problem is addressed by excluding the multi-layer pixels from the process of layer determination in one of two ways:

- (1) Multi-layer pixels assigned as “cluster” cell only are omitted from the current “product” cell analysis.
- (2) Multi-layer pixels assigned as “product-plus-cluster” cell are reassigned as “product” cell only for the current “product” cell analysis. Therefore, the pixels are included in the cloud fraction determination for the horizontal cell but omitted from the layer/type statistic analysis.

The CCL algorithm is divided into two parts. The first, `ccl_cluster()`, performs the analysis of cloud layer based on the selected inputs and produces pixel-level assignment of cloud layer and type for the cell. If no pixels in a given cell are cloudy then the `ccl_cluster()` function returns fill values for the cloud layer and type for the cell.

`Ccl_cluster` function determines a “pixel-level” cloud layer and cloud type. This is an IP output, not EDR. The cloud fraction is determined from the number of cloudy pixels in the HC and is independent of the cloud layer and type determined in the

`CCL_Cluster` function. If there is no cloud in the product cell, i.e. the horizontal cell, the cloud fraction is zero, not FILL. The product quality is computed based on the parameters used in the k-mean analysis.

The first guess module makes the initial assignment of cloudy pixels into layers. Two algorithms are available. The function `mbkm_first_guess()` executes the modified baseline routine and assigns the initial cloud layers based on CTH thresholds (at 2.5, 5.0 and 7.5 km). The function `ekm_first_guess()` executes the extended algorithm and assigns initial cloud layers based on a statistical analysis of CTH. This routine begins with all cloudy pixels in one cluster. If the standard deviation of the cloud heights is greater than the specified threshold (0.75 km), then an attempt is made to split the clouds into two layers. This is accomplished via a k-means distance clustering using height as the only variable. The standard deviations of the resulting cluster are compared with the separation in mean height between the clusters. If this quantity exceeds a specified threshold (1.6 km) or the standard deviation of the original cluster exceeds a threshold

(1.6 km), then the cloudy pixels are split into the two layers. The process repeats for the layer with the largest standard deviation in CTH until a maximum of four layers is defined.

Once the initial layer assignments are complete, the `apply_kmeans()` routine is used to refine the layer assignments based on the variables (i.e., CTH, COT, EPS, and phase) specified in the configuration file. The k-means algorithm compares normalized distance relative to the mean for each layer based on all selected input variables. Cloudy pixels are re-assigned to layers based on the minimum distance. The algorithm iterates a number of times, `KMEANS_MAXITER`, and updates the layer means with each iteration. If the number of pixel reassignments is less than a critical value, `CLUSTER_CONVERG_CRIT`, then the process is terminated.

Finally the CTs are assigned for each pixel in the function `assign_cloud_type()`. For each pixel, the cloud phase determines the possible CTs. The CTH, COT, and EPS of the pixel are compared with the mean values for each CT and the minimum distance is used as the criteria for assigning the type.

The second component of the CCL algorithm, `ccl_product()`, processes the pixels in the product cell to derive the CC fraction and CT for each cloud layer. This component includes the oblique angle correction to the CC fraction estimates. In a given layer, it is possible for cloudy pixels within an HC to be classified as different types (e.g., if the phase is different). If this situation should arise, the code assigns the prevalent CT to the HC. The `ccl_product()` code also includes a preprocessing step used to re-number the cloud layers assigned by the EKM algorithm if the product cell contains fewer layers than the cluster cell. At the end of `ccl_product()`, the aggregation table data is used to assign pixel-level values from each cell to the appropriate scan locations.

Configurable Parameters

Configurable inputs to the CCL algorithm are specified in a single configuration file. The configurable parameters are summarized in Table 11. The table identifies the mean values of CTH, COT, and EPS for each of five cloud types. A set of normalization factors (or weights) are used to specify the relative importance of CTH, COT, EPS, and cloud phase in the k-means clustering analysis. Use of these parameters can be turned off by setting the values to zero. Non-zero factors represent the range of variability of each parameter. Careful selection of these parameters provides the desired balance between the variables in the k-means algorithm.

Two options for dealing with missing data are available in the code and can be selected with the `GRACEFUL_DEGRADATION` configuration parameter. If COT and/or EPS are selected as k-means parameters (i.e., non-zero normalization) and are not present for a given pixel, then either the pixel is omitted from the analysis (`IGNORE_PIXEL`) or the missing variable is omitted from the analysis (`IGNORE_VARIABLE`). If CTH is missing, then the pixel is omitted from the analysis because CTH is required by the first guess algorithm. Cloud phase is always required for the cloud layer analysis.

The modified baseline k-means (MBKM) algorithm is based on an initial guess that groups cloudy pixels into layers based on fixed height thresholds (at 2.5, 5.0, and 7.5 km). The extended k-means (EKM) algorithm determines the initial estimate of the cloud layers based on a statistical analysis of the cloud height distributions. These options can be selected with the `KMEANS_ALGORITHM` configuration parameter.

For each cloud type the mean values of CTH, EPS, and COT are provided. The types appropriate for each cloud phase (i.e., water, ice and mixed) are determined by limits set in the assign_cloud_type() function (e.g., water = type 0 to 2, ice = type 1 to 4, mixed = type 1 to 2).

Aggregation Tables

The product cell size for the VIIRS Cloud aggregated output is approximately 6 km from nadir to end-of-scan (EOS). The product cells are constructed from pixels in one half of the 16 pixel scan. At nadir, the product cell size is 8 by 8 pixels. At EOS, the product cell is 4 by 4 pixels. In total there are 2 x 508 product cells per scan. The cluster cell size defines the region surrounding the product cell that is used to identify and classify the cloud layers. Three cluster cell sizes are considered: 6 km, 12 km, and 18 km (currently, only the aggregation table with the 12 km cluster cell size is being used). Aggregation tables are used to identify the pixels belonging to each product/cluster cell. Table 15 summarizes aggregation tables that have been generated for VIIRS data.

Table 15. CCL/GCE Aggregation Tables

Name	Lines per Scan	SPA	Product Cell Size	# of Cells	Nadir Pixels	EOS Pixels	Cluster Cell Size		
viirs06	16	Yes	6 km	508x2	8x8	4x4	6 km	12 km	18 km

2.1.2.1 Main Module - cclDriver()

This function is the main driver for the core CCL algorithm. Called by ProEdrViirsCcl(), cclDriver() sets the scan pointers, loads the aggregation table data, prefills output data buffers, sets (produces) output quality flags, determines the total number of cells per scan, and processes valid scans in the granule. For each cell in a scan, cell_copy_in() copies cell data into temporary variables for calculations, ccl_cluster() calculates pixel-level cloud layers and types, ccl_product() calculates aggregate-level cloud layers and types, and cell_copy_out() writes pixel-level cloud layer and type to the output.

2.1.2.2 setScan()

cclDriver() calls setScan() to set the scan pointers (previous, current, next) used in processing to the appropriate locations in the IP data.

cell_copy_in() copies in the pixel-values for all input variables as identified by the aggregation table for a given cell.

- getAggCell() is called to retrieve data from the aggregation table for the current cell.
- Sensor zenith angles, latitudes and longitudes are computed for the product cell (for previous, current, and next scans). Latitudes and longitudes are computed as follows:

$$\begin{aligned}
 x &= \sin(\text{co_Lat}) * \cos(\text{Lon}) \\
 y &= \sin(\text{co_Lat}) * \sin(\text{Lon}) \\
 z &= \cos(\text{co_Lat})
 \end{aligned}$$

where co_Lat = 90-Lat

- COT, EPS, CTH, Phase, and Cloud Confidence data is obtained for cluster defined pixels in a cell for previous, current, and next scans.
- For confidently cloudy pixels with valid cloud phase, if the pixels are missing COT, or EPS, the pixels are ignored (if mode set to IGNORE_PIXEL) or the corresponding pixel COT and EPS weights are set to zero (if mode set to IGNORE_VARIABLE).
- For confidently cloudy pixels with valid data, the phase is assigned according to cloud mask.
- The clustering flag is set based on percentage of cloudy product pixels in the cell.
- Aggregate solar zenith, solar azimuth, sensor zenith, sensor azimuth angles and latitude and longitude are calculated for the cell.
The solar and sensor angles are averaged, while latitudes and longitudes are computed as follows:

Calculate average for each value: x, y, z
 $\text{sqrt_result} = \text{sqrt}(x_{\text{avg}}^2 + y_{\text{avg}}^2 + z_{\text{avg}}^2)$
 $\text{cell latitude} = \text{acos}(z_{\text{avg}} / \text{sqrt_result})$
 $\text{cell longitude} = \text{atan2}(y_{\text{avg}}, x_{\text{avg}})$

2.1.2.3 ccl_cluster()

The purpose of `ccl_cluster()` is to apply the k-means algorithm to all pixels in the cluster cell and to set the pixel-level layer and type values. A first guess at layer (also referred to as cluster) assignments for pixels is used to initialize the k-means cluster analysis. The configurable parameter `kmeansAlgorithm` selects which of the two available first guess algorithms to use (`mbkm_first_guess()` or `ekm_first_guess()`). The default is `mbkm_first_guess()`. At this point, assignments of layers to pixels were based on CTH thresholds (if `mbkm` algorithm was used) or CTH statistical analysis (if `ekm` algorithm was used).

Cluster results from the first guess algorithm are used by `apply_kmeans()` to further refine the layer assignments by reassigning pixels to layers using CTH, COT, EPS, and PHASE (involves k-means calculations).

The output IP pixel layer values are set using cluster results from `apply_kmeans()`.

`Assign_cloud_type()` processes cluster means and cluster count results from `apply_kmeans()` to set the output IP pixel type values.

2.1.2.4 ccl_product()

`ccl_product()` determines aggregate layer type and cloud cover layer (fraction) based on product cell pixel-level layer and type assignments.

If the EKM algorithm was used, layer adjustments are computed for layers that do not contain any product pixels. Beginning with the lowest layer that does not contain product pixels, all product pixels assigned to layers higher than the empty layer are shifted down one layer.

For all product pixels in a cell that contain valid layer and type data, cloud and cluster counters are incremented and the CTHs for each layer are accumulated in `cluster_cth_means`. Next, the cloud type with the highest occurrence in a layer is assigned as the cloud type for that layer in the cell.

Cloud fraction for the cell is then calculated as follows:

1. Determine apparent fractional coverage.

$$\text{Appar_frac} = \text{cloud count} / \text{product pixels}$$
2. Use the apparent fractional coverage to determine cloud fraction from the cloud fraction look-up table.
3. Determine horizontal cloud top height (i.e. cloud top height for the cell).

$$\text{Hcth} = \text{cluster count} * \text{cluster means}$$
4. Use the horizontal cloud top height to determine cloud altitude from the cloud altitude look-up table.
5. Determine cloud fraction view angle correction parameters.
 Use the cloud fraction and cloud altitude as indexes into the gamma look-up table to obtain the correct cloud masking exponent (gamma).

$$\text{theta} = \text{sensor zenith angle for the cell}$$

$$\text{x_value} = 1.0 + \text{theta} * \tan(\text{theta}) + (1./\cos(\text{theta}))$$

$$\text{x_value} = 2.0 / \text{x_value}$$

$$\text{f_value} = \text{pow}(\text{x_value}, \text{gamma})$$
6. Compute cloud fraction.

$$\text{Cloud frac} = \text{f_value} * \text{cluster count} / \text{product pixels}$$

Refer to Cloud Cover/Layers ATBD in the Scan Angle Effect and Correction for Cloud Fraction section.

2.1.2.5 cell_copy_out()

cell_copy_out() is called by cclDriver() to write pixel cloud layer and type for only current scan product pixels to the output IP.

2.1.2.6 recalcClusters()

recalcClusters() is called by apply_kmeans() to calculate cluster counts, cluster means and phase counts for cloud layers. This function only processes pixels defined as cluster pixels. The frequency of each cloud phase (water, ice, mixed) for cluster pixels in a cell is determined for later use by assign_cloudType(). Also, the CTH, COT, EPS and Phase values are summed up for applicable layers. Counters and checksums are used to ensure that the correct number of pixels was processed for the cell. CTH, COT, EPS and Phase means are calculated.

2.1.2.7 cloudDist()

Called by assign_cloudType(), this function measures the normalized “distance” between cluster means (if valid) and Cloud Type Table values (COT, CTH, EPS) for the cloud type indicated. The following formula is used:

$$\begin{aligned} & (\text{COT cluster means} / \text{cloud type table COT})^2 \\ & + (\text{CTH cluster means} / \text{cloud type table CTH})^2 \\ & + (\text{EPS cluster means} / \text{cloud type table EPS})^2 \\ & = \text{normalized distance} \end{aligned}$$

2.1.2.8 normDist ()

This function normalizes the “distance” between pixel values and cluster means for CTH, COT, EPS, and Phase (where valid) for different cloud phases using weighted coefficients. Note: if

the graceful degradation mode is set to IGNORE_VARIABLE, the weights for COT and EPS are zero. The following formula is used:

$$\begin{aligned} & ((\text{COT} - \text{COT cluster means}) / \text{COT weight})^2 \\ & + ((\text{CTH} - \text{CTH cluster means}) / \text{CTH weight})^2 \\ & + ((\text{EPS} - \text{EPS cluster means}) / \text{EPS weight})^2 \\ & + ((\text{Phase} - \text{Phase cluster means}) / \text{Phase weight})^2 \\ & = \text{normalized distance} \end{aligned}$$

2.1.2.9 mbkm_first_guess()

The purpose of mbkm_first_guess() is to provide the first guess at layer identification based on fixed cloud top height ranges. For each product or product-and-cluster pixel in a cell that contains valid phase data, the CTH is compared to the cloud top height thresholds (low, mid, high) starting with low. CTH thresholds correspond to cloud layers as follows:

Layer 0: CTH <= CTH_LOW_THRESH
Layer 1: CTH <= CTH_MID_THRESH
Layer 2: CTH <= CTH_HIGH_THRESH
Layer 3: CTH > CTH_HIGH_THRESH

Cluster counters keep track of the number of pixels assigned to each layer, including the NULLLAYER used to capture pixels that are PRODUCT only. Cluster counts for each layer are used as checksums to verify all pixels in the cell were processed.

2.1.2.10 ekm_first_guess()

The EKM algorithm begins with all cloudy pixels assigned to a single layer. If the standard deviation of CTH is greater than some threshold (e.g., 0.75 km) then an attempt is made to assign the cloudy pixels into two layers. This is accomplished via a Euclidean distance metric with CTH as the only variable. Once the clusters are established, the standard deviation of CTH for each distribution is computed, as is the separation between the mean values of CTH. The clusters are accepted as distinct if the separation divided by the sum of the two standard deviations is greater than a prescribed threshold value (e.g., 1.5). Alternatively, if this is not the case but the standard deviation of the initial combined group is greater than yet another critical value (e.g., 1.6 km), then the two clusters are also retained. This process is repeated for the cluster with the largest standard deviation in CTH until a maximum of four cloud layers is established. The three thresholds (EkmCthThresh1, EkmCthThresh2, EkmCthThresh3) used by this algorithm are tunable parameters.

2.1.2.11 apply_kmeans()

The apply_kmeans() algorithm calls recalClusters() to initially calculate the cluster means.

Next, this function loops through the following steps (get normalized distance (call normDist()), set cluster pixel to minimum distance, calculate cluster means (call recalClusters()), test for convergence) to iteratively reassign pixels to layers until cluster convergence criteria is met or the maximum number of iterations is reached.

2.1.2.12 assign_cloud_type ()

In `ccl_cluster()`, `assign_cloud_type()` is called to determine the frequency of each cloud phase (water, ice, mixed) for the pixels in a cell and to assign the phase with the highest frequency to the cell. The cell phase is then compared to phase constants to obtain the max/min indexes for the range of cloud types associated with that phase in the cloud type table. Cluster means of CTH, COT, and EPS for the cell are compared to cloud types within range in the cloud type table using `cloudDist()`. The result with the minimum distance is assigned as the cloud type.

2.1.2.13 produceQualityFlags ()

In `cclDriver()` initialization, `produceQualityFlags()` is called to set the output quality flags for every pixel in the granule according to cloud mask flags for cloud confidence, surface type, sun glint, and snow/ice. This function requires pixel locations, cloud mask data, and location of quality flags to be filled.

2.1.2.14 fillOutputs()

During CCL cell-level processing, if a cell-level function fails, then `fillOutputs()` is called to fill the CCL outputs with error fill values and the quality flags with zero for the indicated cell and all pixels associated with that cell. This function requires pixel and cell locations to be filled.

2.1.2.15 loadAggTbl()

Used by CCL and GCE algorithms, the `loadAggTbl()` function takes each entry in the aggregation table (an entry contains pixel row/col, scan, cell row/col, product) and populates a temporary aggregation structure containing an array of cells with corresponding data for those cells. As the cells are populated with data, a counter logs and stores the number of pixels that were mapped to a cell.

2.1.2.16 getAggCell()

Used by CCL and GCE algorithms, the `getAggCell()` function accesses the temporary aggregation structure to get data for the indicated cell. Cell data includes: pixel indexes; pixel scan values (previous, current, next); pixel product masks (product, cluster, product and cluster); total number of pixels mapped to the cell.

2.1.2.17 assignScanLevelGeolocationData()

After looping through the scans in `cclDriver()`, this function is called with the current cross-granule data and the geolocation output pointers as its parameters. Its basic function is simply to copy scan-level fields from the VIIRS-MOD-GEO input over to the VIIRS-CLD-AGG-GEO output.

2.1.3 Graceful Degradation

The CCL module does not implement graceful degradation. CCL retrievals rely entirely on the availability of data from the VIIRS cloud IPs. No logic is included to replace missing data with secondary sources.

2.1.4 Exception Handling

Error-handling in the Input (I) and Output (O) stages of the I-P-O algorithm addresses errors associated with reading/writing of databases. If an error occurs, the error is reported, the process is terminated and no outputs are produced.

Error-handling in the Processing (P) stage involves granule level, cell level, and pixel level errors. All outputs are initialized with Not Applicable (NA) FILL (except quality flags which are initialized to zero) so all unprocessed cell level or pixel level data contains FILL values.

For granule level errors, i.e. errors resulting from loading the aggregation table or an invalid number of scans, the error is reported, the process is terminated and no outputs are produced.

For pixel level errors, the errors are reported and the pixel level function fails back to the cell level function call.

For cell level errors, the errors are reported, cell level outputs and pixel level outputs associated with the cell being processed are filled with Error (ERR) FILL (quality flags are set to zero) and processing continues with the next cell.

2.1.5 Data Quality Monitoring

The CCL algorithm produces IP and GEO outputs, therefore quality assessment and diagnostics are not done in this algorithm. Any Data Quality Notification (DQN) produced for the Cloud algorithms are handled by the Generate Clouds EDR (GCE) process.

2.1.6 Computational Precision Requirements

The CCL module employs single precision throughout.

2.1.7 Algorithm Support Considerations

Aggregation tables used by the CCL and GCE modules are based on the current VIIRS sensor design. Changes to the design (e.g., sub-pixel aggregation boundaries, number of pixels per line) may require an off-line recalculation of the aggregation tables.

2.1.8 Assumptions and Limitations

The CCL algorithm assumes that the VIIRS 750m SDR auxiliary data, the VCM IP including Cloud Phase, the COP IP, and CTP (Parameters) IP are all available for processing. All inputs are expected in binary format at M-band pixel resolution.

2.2 GCE Description

The GCE algorithm is implemented during EDR processing and requires GEO, IP, and Look-Up Table (LUT) inputs to produce the cloud EDR outputs averaged over HCs and report the sum over all layers for each cloud layer. A top-level diagram for the GCE algorithm is shown in Figure 4. See Section 3.2 of the Cloud Cover/Layers ATBD, 474-00044, for more information.

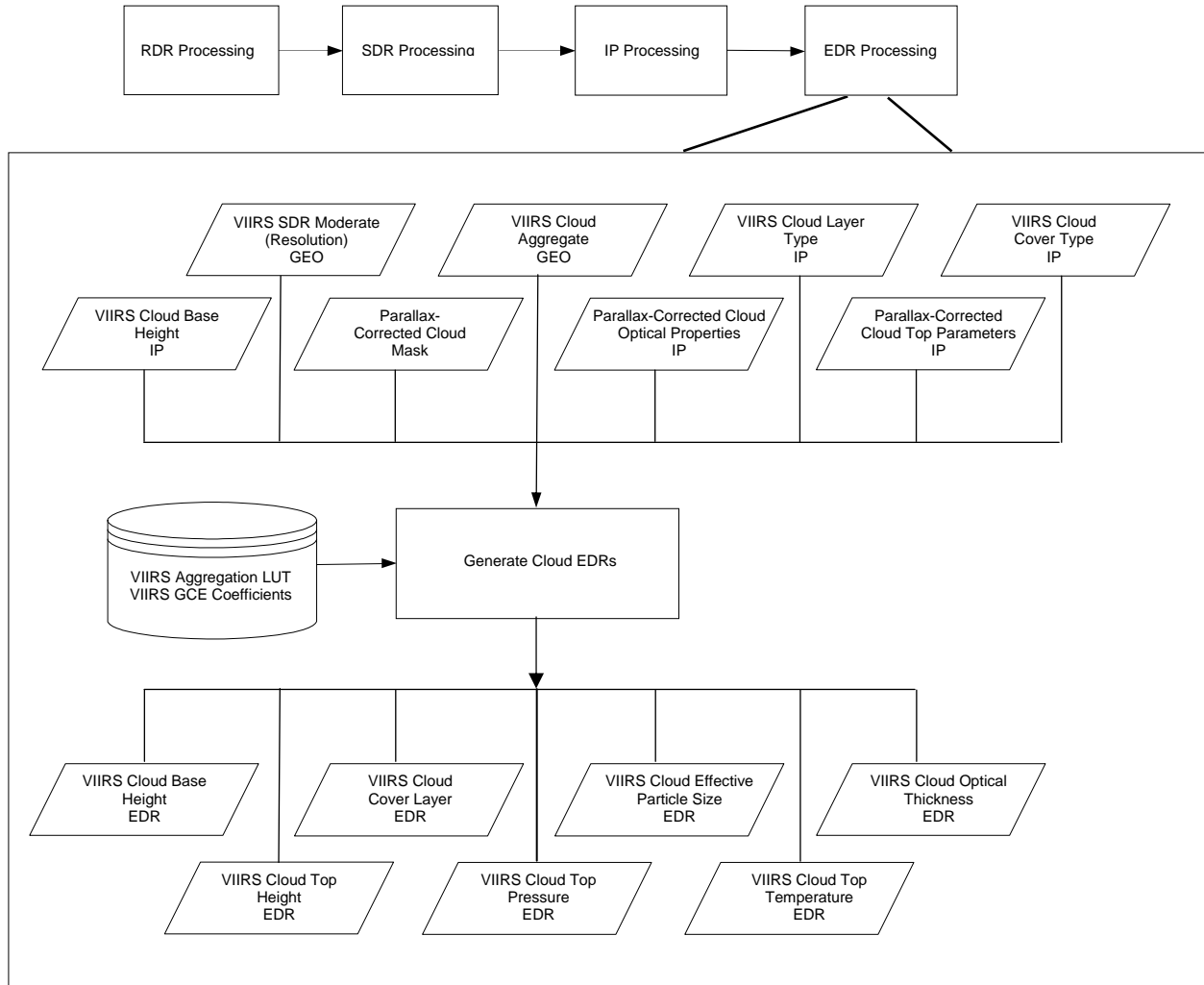


Figure 4. GCE Algorithm Overview

2.2.1 Interfaces

GCE consists of derived and core algorithm modules. The derived algorithm module ProEdrViirsGce functions as a wrapper for the core algorithm module and handles the I-O stages in the I-P-O architecture. ProEdrViirsGce initiates the core algorithm module GenerateCloudEDRs which makes up the P stage.

The main flow of the operational GCE algorithm is shown in Figure 5 below. The GCE algorithm gets all the required input data from DMS. When all the input data needed for processing is

available, the core algorithm GenerateCloudEDRs is called to produce cloud EDRs. All inputs from and outputs to DMS are in binary format.

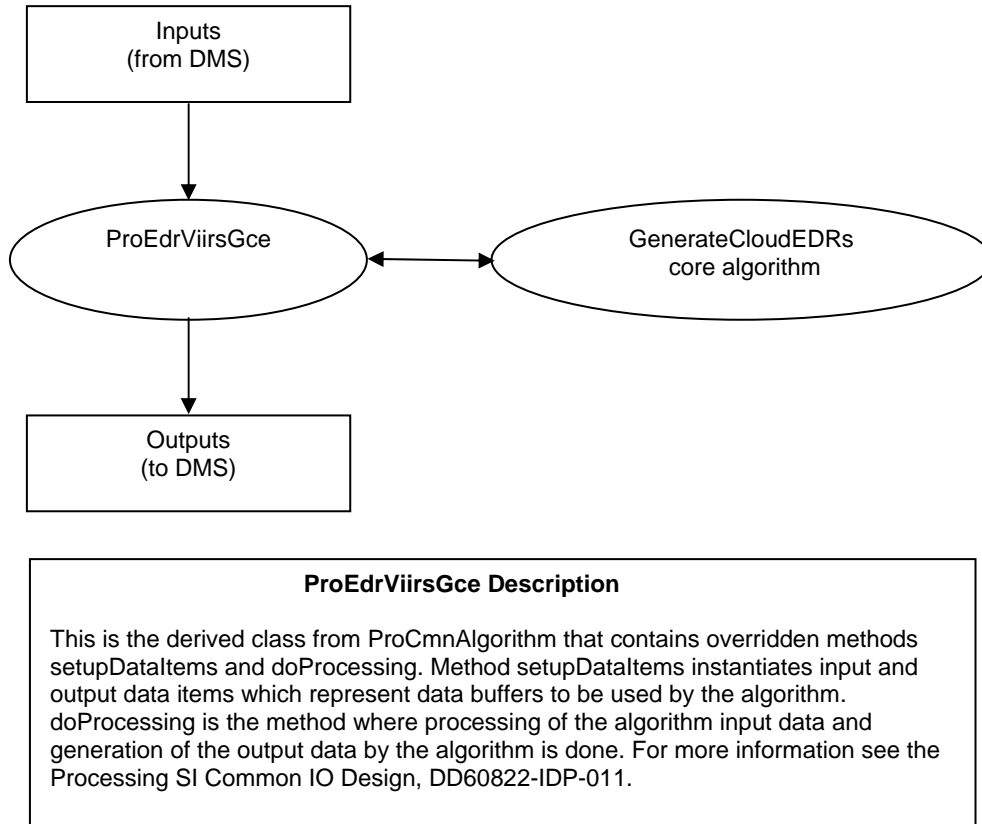


Figure 5. Generate Cloud EDRs Overall Flow Diagram

The GCE Module requires VIIRS Moderate Geolocation (GEO), VIIRS Cloud Aggregate GEO, VIIRS Cloud Base Height (CBH) IP, VIIRS Cloud Cover Type IP, VIIRS Cloud Layer Type IP, VIIRS Parallax Corrected Cloud Optical Properties (COP) IP, VIIRS Parallax Corrected Cloud Top Parameters (CTP) IP, VIIRS Cloud Aggregation (AGG) LUT, and VIIRS GCE IP Algorithm Coefficients as inputs to produce the following outputs: VIIRS Cloud Base Height EDR, VIIRS Cloud Cover Layer EDR, VIIRS Cloud Effective Particle Size EDR, VIIRS Cloud Optical Properties EDR, VIIRS Cloud Top Height EDR, VIIRS Cloud Top Pressure EDR, and VIIRS Cloud Top Temperature EDR. See Section 2.3 of the Cloud Cover/Layers ATBD, 474-00044, for more information.

VIIRS Parallax Corrected Cloud Mask (CM) IP is an optional input used only for metadata purposes. A detailed itemization of the inputs and outputs for the GCE Module is provided in Sections 2.2.1.1 and 2.2.1.2.

2.2.1.1 Inputs

See Section 2.1.1.1 for inputs common to both GCE and CCL and for applicable fill values.

Tables 16 and 17 describe the variables in each of the input files (not already listed in Section 2.1.1.1) required by the GCE module. In each case, the variable type is identified, a short

description is provided, and the units and range for the variable are identified. No range checking of these inputs is performed in the code. The expected valid range of inputs is provided for reference where known. The data is expected to be non-scaled. Any scaled data is un-scaled by the Processing Common Code prior to using it in this algorithm.

Table 16. GCE Input: VIIRS Cloud Base Height IP

Input	Type	Description	Units/Valid Range
<i>Pixel-Level Data Items</i>			
Cbh	Float32[M_VIIRS_SDR_ROW][M_VIIRS_SDR_COLS]	Cloud Base Height	km / -1 to 30
Out of Range	1-bit unsigned field	Out of Range flag (0-20)	0 - Not 1 - Out of Range

Table 17. GCE Tunable Parameters and Processing Coefficients

Input	Type	Description	Units/Valid Range
QF COT Solar Zenith Angle Threshold	Float32	Threshold (in radians) used to set Day/Night/Transition quality flags	Radians / (75*pi)/180
c1	Float32	Coefficient in geopotential to geometric height correction in height_conversion()	Unitless / 0.002644
c2	Float32	Coefficient in geopotential to geometric height correction in height_conversion()	Unitless / 0.0089
c3	Float32	Coefficient in geopotential to geometric height correction in height_conversion()	Unitless / 6245.

2.2.1.2 Outputs

For the outputs in this section, see Note 1 in Section 2.1.1.1 for applicable fill values.

The GCE module generates cloud EDRs reported over HCs. A common HC size is used for all cloud EDRs (i.e., approximately 6 km). These products are in binary format. Along with the EDR output, QF values are also reported over the HC. Both scaled (integerized) and full resolution (nonscaled) EDRs are produced (refer to IDPS Scaled Integers Proposed Solution). Scaled EDRs include CBH, CCL, CEPS, COT, CTH, CTP (Pressure), and CTT. Full resolution EDRs (FEDRs) include CCL, CTH, and CTP (Pressure).

Each EDR contains two types of data (layered and total) and three types of quality flags (layered, total, and non-cloud related). CCL EDR also contains type data. Layered data contains the retrieved values of, for example, COT on a layer-by-layer basis, and total contains the average over the HC (except for cloud cover, which represents the total fraction over the HC). Additionally, scaled EDRs contain scale and offset values whereas full EDRs do not. Furthermore, layered data are arranged according to the layered CTH, where the 1st layer has the highest cloud height, and the 2nd layer has the next lower cloud height, etc. As such, no cloud will ever appear in layer 2 or 3 when the 1st layer is FILL.

In the “layered” and “total” COT, EPS, CTH, CTT, CTP and CBH the data field will be ‘FILL’ if there is no cloud in the designated layer or HC. For layered and “total” cloud cover, however, the data field is set to “0” if there is no cloud in the designated layer or HC. For cloud type, the type will be “FILL” if there is no cloud in the designated layer.

Tables 18 and 19 describe in detail each of the QFs implemented in all the cloud EDRs. These quality flags have essentially the same meaning in each EDR except for those QFs where specific thresholds are used (for example, COT and EPS have different out-of-bound threshold values).

Notice that both Layer and Total quality flags use identical quality flag bytes. For example, in the COT EDR output file, there is “Layer COT EDR Quality” and “Total COT EDR Quality”; both are interpreted as in Table 18. For the non-cloud related QFs, their values are reported in “COT EDR Quality” as described by Table 19. All Cloud EDR QF bitmasks are defined in ProEdrViirsGceGbl.h.

Table 18. Layered and Total Quality Flags (QF_LYR_CLOUD) for Horizontal Cell

Name – Byte 0	Bitfield	Description/Source	Value
qf_cld_confidence	0-1	Cloud confidence	Cloudiness classified in 4 levels *
qf_phs	2-7	Cloud phase	Bits 2-3: water cloud in classified 4 levels* Bits 4-5: multi-layer cloud classified in 4 levels * Bits 6-7: mixed cloud classified in 4 levels *
Name – Byte 1	Bitfield	Description/Source	Value
qf_overall_set	0-1	Overall pixel level quality flag	Good Quality** classified in 4 levels
qf_out_bound	2	Check if out of bound	If pixels that are out of bound in a Horizontal Cell exceed 50%, set to 1; otherwise set to 0
qf_residual	3	Check convergence	If pixels that are convergent in a Horizontal Cell exceed 50%, set to 1; otherwise set to 0
qf_tau	4	Check if cot < 1.0	If pixels whose cot < 1.0 in a Horizontal Cell exceed 50%, set to 1; otherwise set to 0
qf_alg_branch***	5-6	Indicate degree of opaque cloud algorithm used	Algorithm branching classified in 4 levels (only used by Cloud Top Parameter EDRs)
qf_ice_tau10	7	Check degraded condition for ice cloud, cot > 10	If ice cloud pixels whose cot > 10.0 in a Horizontal Cell exceed 50%, set to 1; otherwise set to 0

* The 4 level classifications represent 0: 0 to <25%; 1: 25 to <50%; 2: 50 to- <75%; 3: 75 to 100%.

** The value of the overall quality is defined as the ratio of valid retrievals excluding non-convergent, sun glint (but not excluding sun glint over land) and bad SDR pixels and the total number of cloudy pixels.

*** The value of algorithm branching is defined as the ratio of the number of pixel retrievals that use the “opaque cloud” algorithm, and the total number of valid retrievals. This QF is applicable only to CTP (Pressure), CTH and CTT.

Table 19. Non-cloud Related Quality Flags (QF_CLOUD) for a Horizontal Cell

Name – Byte 0	Bitfield	Description/Source	Value
qf_snowice	0-1	Snow/ice surface	Snow/ice surface in 4-level percent
qf_excl_sunglint	2-3	Sun glint region	Sun glint region in 4-level percent
qf_day_night	4-5	Day/night/transition	1: Day; 2: Night; 3: Transition
qf_bad_sdr_data	6-7	Bad SDR data flag	Bad sdr data 0=good, 1=bad, 2=no calibration
Name – Byte 1	Bitfield	Description/Source	Value
qf_surfType	0-3	Surface type	Bits 0-1: water in 4-level percent Bits 2-3: coastal in 4-level percent

EDR data output for each Cloud EDR is discussed below (Tables 20 – 26 for EDRs, Tables 27 – 29 for FEDRs). Please refer to the CDFCB-X, Vol. IV, Part 2 for additional quality flag information. Note: Non-layered means that all layers are “summed up” into a single layer in the following tables.

Table 20. GCE Output: VIIRS CBH EDR

Output	Type	Description	Units/Valid Range
Granule-Level Data Items			
scale	Float32	Scale value for the CBH Layer and Total fields	None
offset	Float32	Offset value for the CBH Layer and Total fields to be used in unscaling	None
Cell-Level Data Items			
Layer_CBH	UInt16[VIIRS_CLD_HC_ROWS][VIIRS_CLD_HC_COLS][VIIRS_CLD_LYRS]	Cloud Base Height for each cloud layer	kilometers / -1 to 20
Total_CBH	UInt16[VIIRS_CLD_HC_ROWS][VIIRS_CLD_HC_COLS][VIIRS_CLD_LYRS]	Cloud Base Height averaged over layers	kilometers / -1 to 20
Layer CBH Quality0 (QF1)	UInt8[VIIRS_CLD_HC_ROWS][VIIRS_CLD_HC_COLS][VIIRS_CLD_LYRS]	Layered flag of QF_LYR_CLOUD byte 0	Layered QF_LYR_CLOUD structure
Layer CBH Quality1 (QF2)	UInt8[VIIRS_CLD_HC_ROWS][VIIRS_CLD_HC_COLS]	Layered flag of QF_LYR_CLOUD byte 1	Layered QF_LYR_CLOUD structure, the flag qf_out_bound is defined as cbh_out_range: (0-20 km)
Total CBH Quality0 (QF3)	UInt8[VIIRS_CLD_HC_ROWS][VIIRS_CLD_HC_COLS]	Flags of QF_LYR_CLOUD byte 0 over a non-layered horizontal cell	Non-layered QF_LYR_CLOUD structure
Total CBH Quality1 (QF4)	UInt8[VIIRS_CLD_HC_ROWS][VIIRS_CLD_HC_COLS]	Flags of QF_LYR_CLOUD byte1 over a non-layered horizontal cell	Non-layered QF_LYR_CLOUD structure, the flag qf_out_bound is defined as cbh_out_range: (0-20 km)
CBH Quality0 (QF5)	UInt8[VIIRS_CLD_HC_ROWS][VIIRS_CLD_HC_COLS]	Flags of QF_CLOUD byte 0	QF_CLOUD structure
CBH Quality1 (QF6)	UInt8[VIIRS_CLD_HC_ROWS][VIIRS_CLD_HC_COLS][VIIRS_CLD_LYRS]	Flags of QF_CLOUD byte 1	QF_CLOUD structure

Table 21. GCE Output: VIIRS CCL EDR

Output	Type	Description	Units/Valid Range
Granule-Level Data Items			
scale	Float32	Scale value for the CCL Layer and Total fields	None
offset	Float32	Offset value for the CCL Layer and Total fields to be used in unscaling	None
Cell-Level Data Items			
Layer_Cloud_Cover	UInt16[VIIRS_CLD_HC_ROWS][VIIRS_S_CLD_HC_COLS][VIIRS_CLD_LYRS]	Cloud fraction for each cloud layer	None / 0 to 1 Note: the range listed is prior to scaling data from Float32 to UInt16
Total_Cloud_Cover	UInt16[VIIRS_CLD_HC_ROWS][VIIRS_S_CLD_HC_COLS][VIIRS_CLD_LYRS]	Cloud fraction summed over layers	None / 0 to 1 Note: the range listed is prior to scaling data from Float32 to UInt16
Cloud Type	UInt8[VIIRS_CLD_HC_ROWS][VIIRS_CLD_HC_COLS][VIIRS_CLD_LYRS]	Cloud type for each cloud layer	Unitless / 1 to 5 1-Stratus 2-Alto Cumulus 3-Cumulus 4-Cirrus 5-CirrusCumulus
Layer CCL Quality0 (QF1)	UInt8[VIIRS_CLD_HC_ROWS][VIIRS_CLD_HC_COLS][VIIRS_CLD_LYRS]	Layered flag of QF_LYR_CLOUD byte 0	Layered QF_LYR_CLOUD structure
Layer CCL Quality1 (QF2)	UInt8[VIIRS_CLD_HC_ROWS][VIIRS_CLD_HC_COLS]	Layered flag of QF_LYR_CLOUD byte 1	Layered QF_LYR_CLOUD structure, the flag qf_out_bound is defined as cot_out_range
Total CCL Quality0 (QF3)	UInt8[VIIRS_CLD_HC_ROWS][VIIRS_CLD_HC_COLS]	Flags of QF_LYR_CLOUD byte 0 over a non-layered horizontal cell	Non-layered QF_LYR_CLOUD structure
Total CCL Quality1 (QF4)	UInt8[VIIRS_CLD_HC_ROWS][VIIRS_CLD_HC_COLS]	Flags of QF_LYR_CLOUD byte 1 over a non-layered horizontal cell	Non-layered QF_LYR_CLOUD structure, the flag qf_out_bound is defined as cot_out_range
CCL Quality0 (QF5)	UInt8[VIIRS_CLD_HC_ROWS][VIIRS_CLD_HC_COLS]	Flags of QF_CLOUD byte 0	QF_CLOUD structure
CCL Quality1 (QF6)	UInt16[VIIRS_CLD_HC_ROWS][VIIRS_S_CLD_HC_COLS][VIIRS_CLD_LYRS]	Flags of QF_CLOUD byte 1	QF_CLOUD structure

Table 22. GCE Output: VIIRS CEPS EDR

Input	Type	Description	Units/Valid Range
Granule-Level Data Items			
scale	Float32	Scale value for the CEPS Layer and Total fields	Unitless / none
offset	Float32	Offset value for the CEPS Layer and Total fields to be used in unscaling	Unitless / none
Cell-Level Data Items			
Layer_CEPS	UInt16[VIIRS_CLD_HC_ROWS][VIIRS_CLD_HC_COLS][VIIRS_CLD_LYRS]	Cloud Effective Particle Size for each layer	microns / 0 to 124
Total_CEPS	UInt16[VIIRS_CLD_HC_ROWS][VIIRS_CLD_HC_COLS][VIIRS_CLD_LYRS]	Cloud Effective Particle Size averaged over layers	microns / 0 to 124
Layer CEPS Quality0 (QF1)	UInt8[VIIRS_CLD_HC_ROWS][VIIRS_CLD_HC_COLS][VIIRS_CLD_LYRS]	Layered flag of QF_LYR_CLOUD byte 0	Layered QF_LYR_CLOUD structure
Layer CEPS Quality1 (QF2)	UInt8[VIIRS_CLD_HC_ROWS][VIIRS_CLD_HC_COLS][VIIRS_CLD_LYRS]	Layered flag of QF_LYR_CLOUD byte 1	Layered QF_LYR_CLOUD structure, the flag qf_out_bound is defined as eps_out_range: (1-50 micron) for ice; and (1-50 micron) for water
Total CEPS Quality0 (QF3)	UInt8[VIIRS_CLD_HC_ROWS][VIIRS_CLD_HC_COLS]	Flags of QF_LYR_CLOUD byte 0 over a non-layered horizontal cell	Non-layered QF_LYR_CLOUD structure
Total CEPS Quality1 (QF4)	UInt8[VIIRS_CLD_HC_ROWS][VIIRS_CLD_HC_COLS]	Flags of QF_LYR_CLOUD byte 1 over a non-layered horizontal cell	Non-layered QF_LYR_CLOUD structure, the flag qf_out_bound is defined as eps_out_range: (1-50 micron) for ice; and (1-50 micron) for water
CEPS Quality0 (QF5)	UInt8[VIIRS_CLD_HC_ROWS][VIIRS_CLD_HC_COLS]	Flags of QF_CLOUD byte 0	QF_CLOUD structure
CEPS Quality1 (QF6)	UInt8[VIIRS_CLD_HC_ROWS][VIIRS_CLD_HC_COLS]	Flags of QF_CLOUD byte 1	QF_CLOUD structure

Table 23. GCE Output: VIIRS COT EDR

Input	Type	Description	Units/Valid Range
Granule-Level Data Items			
scale	Float32	Scale value for the COT Layer and Total fields	Unitless / none
offset	Float32	Offset value for the COT Layer and Total fields to be used in unscaling	Unitless / none
Cell-Level Data Items			
Layer_COT	UInt16[VIIRS_CLD_HC_ROWS][VIIRS_CLD_HC_COLS][VIIRS_CLD_LYRS]	Cloud Optical Thickness for each layer	Unitless / 0.1 to 128.0
Total_COT	UInt16[VIIRS_CLD_HC_ROWS][VIIRS_CLD_HC_COLS][VIIRS_CLD_LYRS]	Cloud Optical Thickness averaged over layers	Unitless / 0.1 to 128.0
Layer COT Quality0 (QF1)	UInt8[VIIRS_CLD_HC_ROWS][VIIRS_CLD_HC_COLS][VIIRS_CLD_LYRS]	Layered flag of QF_LYR_CLOUD byte 0	Layered QF_LYR_CLOUD structure
Layer COT Quality1 (QF2)	UInt8[VIIRS_CLD_HC_ROWS][VIIRS_CLD_HC_COLS][VIIRS_CLD_LYRS]	Layered flag of QF_LYR_CLOUD byte 1	Layered QF_LYR_CLOUD structure, the flag qf_out_bound is defined as cot_out_range Day: (0.1-10) Night: (0.5-10)
Total COT Quality0 (QF3)	UInt8[VIIRS_CLD_HC_ROWS][VIIRS_CLD_HC_COLS]	Flags of QF_LYR_CLOUD byte 0 over a non-layered horizontal cell	Non-layered* QF_LYR_CLOUD structure
Total COT Quality1 (QF4)	UInt8[VIIRS_CLD_HC_ROWS][VIIRS_CLD_HC_COLS]	Flags of QF_LYR_CLOUD byte 1 over a non-layered horizontal cell	Non-layered* QF_LYR_CLOUD structure, the flag qf_out_bound is defined as cot_out_range Day: (0.1-10) Night: (0.5-10)
COT Quality0 (QF5)	UInt8[VIIRS_CLD_HC_ROWS][VIIRS_CLD_HC_COLS]	Flags of QF_CLOUD byte 0	QF_CLOUD structure
COT Quality1 (QF6)	UInt8[VIIRS_CLD_HC_ROWS][VIIRS_CLD_HC_COLS]	Flags of QF_CLOUD byte 1	QF_CLOUD structure

Table 24. GCE Output: VIIRS CTH EDR

Output	Type	Description	Units/Range
Granule-Level Data Items			
scale	Float32	Scale value for the CTP (Pressure) Layer and Total fields	Unitless / None
offset	Float32	Offset value for the CTP (Pressure) Layer and Total fields to be used in unscaling	Unitless / None
Cell-Level Data Items			
Layer_CTH	UInt16[VIIRS_CLD_HC_ROWS][VIIRS_CLD_HC_COLS][VIIRS_CLD_LYRS]	Cloud Top Height for each layer	km / -1 to 20

Output	Type	Description	Units/Range
Total_CTH	UInt16[VIIRS_CLD_H C_ROWS][VIIRS_CL D_HC_COLS][VIIRS_ CLD_LYRS]	Cloud Top Height averaged over layers	-1 to 20
Layer CTH Quality0 (QF1)	UInt8[VIIRS_CLD_H C_ROWS][VIIRS_CL D_HC_COLS][VIIRS_ CLD_LYRS]	Layered flag of QF_LYR_CLOUD byte 0	Layered QF_LYR_CLOUD structure
Layer CTH Quality1 (QF2)	UInt8[VIIRS_CLD_H C_ROWS][VIIRS_CL D_HC_COLS][VIIRS_ CLD_LYRS]	Layered flag of QF_LYR_CLOUD byte 1	Layered QF_LYR_CLOUD structure, the flag qf_out_bound is defined as cth_out_range: (0-20 km)
Total CTH Quality0 (QF3)	UInt8[VIIRS_CLD_H C_ROWS][VIIRS_CL D_HC_COLS]	Flags of QF_LYR_CLOUD byte 0 over a non-layered horizontal cell	Nonlayered QF_LYR_CLOUD structure
Total CTH Quality1 (QF4)	UInt8[VIIRS_CLD_H C_ROWS][VIIRS_CL D_HC_COLS]	Flags of QF_LYR_CLOUD byte 1 over a non-layered horizontal cell	Non-layered QF_LYR_CLOUD structure, the flag qf_out_bound is defined as cth_out_range: (0-20 km)
CTH Quality0 (QF5)	UInt8[VIIRS_CLD_H C_ROWS][VIIRS_CL D_HC_COLS]	Flags of QF_CLOUD byte 0	QF_CLOUD structure
CTH Quality1 (QF6)	UInt8[VIIRS_CLD_H C_ROWS][VIIRS_CL D_HC_COLS]	Flags of QF_CLOUD byte 1	QF_CLOUD structure

Table 25. GCE Output: VIIRS CTP (Pressure) EDR

Output	Type	Description	Units/Range
Granule-Level Data Items			
scale	Float32	Scale value for the CTP (Pressure) Layer and Total fields	None
offset	Float32	Offset value for the CTP (Pressure) Layer and Total fields to be used in unscaling	None
Cell-Level Data Items			
Layer_CTP	UInt16[VIIRS_CLD_H C_ROWS][VIIRS_CLD_HC_COLS][VIIRS_CLD_LYRS]	Cloud Top Pressure for each cloud layer	mbar / 50 to 1050
Total_CTP	UInt16[VIIRS_CLD_H C_ROWS][VIIRS_CLD_HC_COLS][VIIRS_CLD_LYRS]	Cloud Top Pressure averaged over layers	mbar / 50 to 1050
Layer CTP Quality0 (QF1)	UInt8[VIIRS_CLD_H C_ROWS][VIIRS_CLD_HC_COLS][VIIRS_CLD_LYRS]	Cloud Top Pressure layered flag of QF_LYR_CLOUD byte 0	Layered QF_LYR_CLOUD structure
Layer CTP Quality1 (QF2)	UInt8[VIIRS_CLD_H C_ROWS][VIIRS_CLD_HC_COLS][VIIRS_CLD_LYRS]	Cloud Top Pressure layered flag of QF_LYR_CLOUD byte 1	Layered QF_LYR_CLOUD structure, the flag qf_out_bound is defined as ctp_out_range: (50-1050 mb)
Total CTP Quality0 (QF3)	UInt8[VIIRS_CLD_H C_ROWS][VIIRS_CLD_HC_COLS]	Cloud Top Pressure flags of QF_LYR_CLOUD byte 0 over a non-layered horizontal cell	Nonlayered QF_LYR_CLOUD structure
Total CTP Quality1 (QF4)	UInt8[VIIRS_CLD_H C_ROWS][VIIRS_CLD_HC_COLS]	Cloud Top Pressure flags of QF_LYR_CLOUD byte 1 over a non-layered horizontal cell	Non-layered QF_LYR_CLOUD structure, the flag qf_out_bound is defined as ctp_out_range: (50-1050 mb)
CTP Quality0 (QF5)	UInt8[VIIRS_CLD_H C_ROWS][VIIRS_CLD_HC_COLS]	Cloud Top Pressure flags of QF_CLOUD byte 0	QF_CLOUD structure
CTP Quality1 (QF6)	UInt8[VIIRS_CLD_H C_ROWS][VIIRS_CLD_HC_COLS]	Cloud Top Pressure flags of QF_CLOUD byte 1	QF_CLOUD structure

Table 26. GCE Output: VIIRS CTT EDR

Output	Data Type/size	Description	Units/Range
Granule-Level Data Items			
scale	Float32	Scale value for the CTT Layer and Total fields	Unitless / None
offset	Float32	Offset value for the CTT Layer and Total fields to be used in unscaling	Unitless / None
Cell-Level Data Items			
Layer_CTT	UInt16[VIIRS_CLD_H C_ROWS][VIIRS_CLD_HC_COLS][VIIRS_CLD_LYRS]	Cloud Top Temperature for each layer	K / 180 to 343
Total_CTT	UInt16[VIIRS_CLD_H C_ROWS][VIIRS_CLD_HC_COLS][VIIRS_CLD_LYRS]	Cloud Top Temperature averaged over layers	K / 180 to 343

Output	Data Type/size	Description	Units/Range
Layer CTT Quality0 (QF1)	UInt8[VIIRS_CLD_HC_ROWS][VIIRS_CLD_HC_COLS][VIIRS_CLD_LYRS]	Layered flag of QF_LYR_CLOUD byte 0	Layered QF_LYR_CLOUD structure
Layer CTT Quality1 (QF2)	UInt8[VIIRS_CLD_HC_ROWS][VIIRS_CLD_HC_COLS][VIIRS_CLD_LYRS]	Layered flag of QF_LYR_CLOUD byte 1	Layered QF_LYR_CLOUD structure, the flag qf_out_bound is defined as ct_out_range: (175-310 Kelvin)
Total CTT Quality0 (QF3)	UInt8[VIIRS_CLD_HC_ROWS][VIIRS_CLD_HC_COLS]	Flags of QF_LYR_CLOUD byte 0 over a non-layered horizontal cell	Nonlayered QF_LYR_CLOUD structure
Total CTT Quality1 (QF4)	UInt8[VIIRS_CLD_HC_ROWS][VIIRS_CLD_HC_COLS]	Flags of QF_LYR_CLOUD byte 1 over a non-layered horizontal cell	Non-layered QF_LYR_CLOUD structure, the flag qf_out_bound is defined as ct_out_range
CTT Quality0 (QF5)	UInt8[VIIRS_CLD_HC_ROWS][VIIRS_CLD_HC_COLS]	Flags of QF_CLOUD byte 0	QF_CLOUD structure
CTT Quality1 (QF6)	UInt8[VIIRS_CLD_HC_ROWS][VIIRS_CLD_HC_COLS]	Flags of QF_CLOUD byte 1	QF_CLOUD structure

Tables 27 – 29 list the optional output full resolution EDRs (FEDRs) for CCL, CTH, and CTP.

Table 27. GCE (Optional) Output: VIIRS CCL FEDR (Full Resolution)

Output	Type	Description	Units/Range
Cell-Level Data Items			
Layer_Cloud_Cover	Float32[VIIRS_CLD_HC_ROWS][VIIRS_CLD_HC_COLS][VIIRS_CLD_LYRS]	Cloud fraction for each cloud layer	None / 0 to1
Total_Cloud_Cover	Float32[VIIRS_CLD_HC_ROWS][VIIRS_CLD_HC_COLS][VIIRS_CLD_LYRS]	Cloud fraction summed over layers	None / 0 to1
Cloud Type	UInt8[VIIRS_CLD_HC_ROWS][VIIRS_CLD_HC_COLS][VIIRS_CLD_LYRS]	Cloud type for each cloud layer	Unitless / 1 to 5 1-Stratus 2-Alto Cumulus 3-Cumulus 4-Cirrus 5-CirrusCumulus
Layer CCL Quality0	UInt8[VIIRS_CLD_HC_ROWS][VIIRS_CLD_HC_COLS][VIIRS_CLD_LYRS]	Layered flag of QF_LYR_CLOUD byte 0	Layered QF_LYR_CLOUD structure
Layer CCL Quality1	UInt8[VIIRS_CLD_HC_ROWS][VIIRS_CLD_HC_COLS]	Layered flag of QF_LYR_CLOUD byte 1	Layered QF_LYR_CLOUD structure, the flag qf_out_bound is defined as cot_out_range
Total CCL Quality0	UInt8[VIIRS_CLD_HC_ROWS][VIIRS_CLD_HC_COLS]	Flags of QF_LYR_CLOUD byte 0 over a non-layered horizontal cell	Non-layered QF_LYR_CLOUD structure
Total CCL Quality1	UInt8[VIIRS_CLD_HC_ROWS][VIIRS_CLD_HC_COLS]	Flags of QF_LYR_CLOUD byte 1 over a non-layered horizontal cell	Non-layered QF_LYR_CLOUD structure, the flag qf_out_bound is defined as cot_out_range
CCL Quality0	UInt8[VIIRS_CLD_HC_ROWS][VIIRS_CLD_HC_COLS]	Flags of QF_CLOUD byte 0	QF_CLOUD structure
CCL Quality1	UInt16[VIIRS_CLD_HC_ROWS][VIIRS_CLD_HC_COLS][VIIRS_CLD_LYRS]	Flags of QF_CLOUD byte 1	QF_CLOUD structure

Table 28. GCE (Optional) Output: VIIRS CTH FEDR (Full Resolution)

Output	Type	Description	Units/Range
Cell-Level Data Items			
Layer_CTH	Float32[VIIRS_CLD_HC_ROWS][VIIRS_CLD_HC_COLS][VIIRS_CLD_LYRS]	Cloud Top Height for each layer	km / 0 to 30
Total_CTH	Float32[VIIRS_CLD_HC_ROWS][VIIRS_CLD_HC_COLS][VIIRS_CLD_LYRS]	Cloud Top Height averaged over layers	km / 0 to 30
Layer CTH Quality0	UInt8[VIIRS_CLD_HC_ROWS][VIIRS_CLD_HC_COLS][VIIRS_CLD_LYRS]	Layered flag of QF_LYR_CLOUD byte 0	Layered QF_LYR_CLOUD structure
Layer CTH Quality1	UInt8[VIIRS_CLD_HC_ROWS][VIIRS_CLD_HC_COLS][VIIRS_CLD_LYRS]	Layered flag of QF_LYR_CLOUD byte 1	Layered QF_LYR_CLOUD structure, the flag qf_out_bound is defined as cth_out_range: (0-20 km)

Output	Type	Description	Units/Range
Total CTH Quality0	UInt8[VIIRS_CLD_H C_ROWS][VIIRS_CL D_HC_COLS]	Flags of QF_LYR_CLOUD byte 0 over a non-layered horizontal cell	Non-layered QF_LYR_CLOUD structure
Total CTH Quality1	UInt8[VIIRS_CLD_H C_ROWS][VIIRS_CL D_HC_COLS]	Flags of QF_LYR_CLOUD byte 1 over a non-layered horizontal cell	Non-layered QF_LYR_CLOUD structure, the flag qf_out_bound is defined as cth_out_range: (0-20 km)
CTH Quality0	UInt8[VIIRS_CLD_H C_ROWS][VIIRS_CL D_HC_COLS]	Flags of QF_CLOUD byte 0	QF_CLOUD structure
CTH Quality1	UInt8[VIIRS_CLD_H C_ROWS][VIIRS_CL D_HC_COLS]	Flags of QF_CLOUD byte 1	QF_CLOUD structure

Table 29. GCE (Optional) Output: VIIRS CTP (Pressure) FEDR (Full Resolution)

Output	Type	Description	Units/Range
Cell-Level Data Items			
Layer_CTP	Float32[VIIRS_CLD_ HC_ROWS][VIIRS_C LD_HC_COLS][VIIRS _CLD_LYRS]	Cloud Top Pressure for each cloud layer	mbar / 50 to 1100
Total_CTP	Float32[VIIRS_CLD_ HC_ROWS][VIIRS_C LD_HC_COLS][VIIRS _CLD_LYRS]	Cloud Top Pressure averaged over layers	mbar / 50 to 1100
Layer CTP Quality0	UInt8[VIIRS_CLD_H C_ROWS][VIIRS_CL D_HC_COLS][VIIRS_ CLD_LYRS]	Cloud Top Pressure layered flag of QF_LYR_CLOUD byte 0	Layered QF_LYR_CLOUD structure
Layer CTP Quality1	UInt8[VIIRS_CLD_H C_ROWS][VIIRS_CL D_HC_COLS][VIIRS_ CLD_LYRS]	Cloud Top Pressure layered flag of QF_LYR_CLOUD byte 1	Layered QF_LYR_CLOUD structure, the flag qf_out_bound is defined as ctp_out_range: (50-1050 mb)
Total CTP Quality0	UInt8[VIIRS_CLD_H C_ROWS][VIIRS_CL D_HC_COLS]	Cloud Top Pressure flags of QF_LYR_CLOUD byte 0 over a non-layered horizontal cell	Non-layered QF_LYR_CLOUD structure
Total CTP Quality1	UInt8[VIIRS_CLD_H C_ROWS][VIIRS_CL D_HC_COLS]	Cloud Top Pressure flags of QF_LYR_CLOUD byte 1 over a non-layered horizontal cell	Non-layered QF_LYR_CLOUD structure, the flag qf_out_bound is defined as ctp_out_range: (50-1050 mb)
CTP Quality0	UInt8[VIIRS_CLD_H C_ROWS][VIIRS_CL D_HC_COLS]	Cloud Top Pressure flags of QF_CLOUD byte 0	QF_CLOUD structure
CTP Quality1	UInt8[VIIRS_CLD_H C_ROWS][VIIRS_CL D_HC_COLS]	Cloud Top Pressure flags of QF_CLOUD byte 1	QF_CLOUD structure

2.2.2 Algorithm Processing

The objective of the GCE module is to classify cloud pixels into layers and to generate cloud products (i.e., COT, EPS, CTT, CTH, CTP (Pressure), CBH, CC fraction, and CT) for these layers averaged over horizontal cells. The module uses, as input, the pixel-level identification of cloud layer produced by the CCL module and the CCL aggregation table to create the products.

See Section 2.5 of the Cloud Cover/Layers ATBD, 474-00044, for more information. The dataflow model for the GCE algorithm is illustrated in Figure 6.

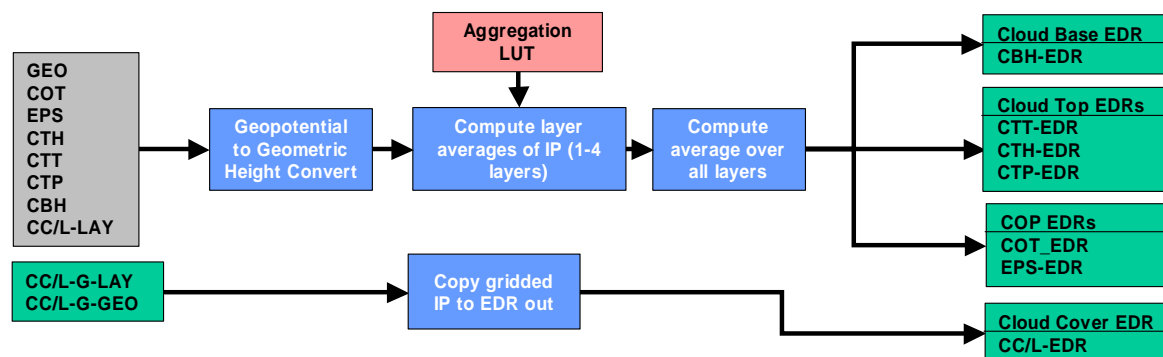


Figure 6. Conceptual Process for Generate Cloud EDRs

GCE reads and processes data one scan at a time. Horizontal product cells are always comprised of pixels within a single scan. The assignment of pixels to product cells is accomplished using an aggregation table. For each scan line, GCE loops over all product cells and generates outputs based on the pixel-level cloud IPs identified with each cell. GCE uses a routine called `getScan()` to read the input data. The aggregation table is read using `loadAggTbl()` and the pixels associated with each cell are identified with `getAggCell()`. The GCE routine requires only the current scan.

Retrieval Logic

The main processing of the GCE module is carried out in the `aggregate()` routine. This routine takes pixel-level inputs for each product cell as identified by the aggregation table and computes average values for each cell and for each cloud layer identified in the cell. The routines, `average2d()` and `average3d()`, process each of the cloud products (COT, EPS, CTT, CTH, CTP (Pressure), and CBH) to produce the result for each cell and for each layer in each cell. These routines include logic to handle missing data. The averaging routines also ensure that only pixels belonging to the product cell, and identified with the current scan, are included. Separate routines, `QF_Lyr_2d()`, `QF_Lyr_3d()`, `QF_Lyr()`, are used to process IP quality data. At this point a correction from geopotential to geometric height is also applied to the CBH and CTH products. The CC and CT products are copied directly from the cell-averaged products supplied by the CCL algorithm.

2.2.2.1 Main Module – GCE_main()

`GCE_main()` is the main driver for the core GCE algorithm. Called by `ProEdrViirsGce()`, `GCE_main()` loads the aggregation table via `loadAggTbl()`, assigns scan pointers and processes granule data one scan at a time. For each cell in a scan, `getAggCell()` gets cell information from the aggregation table and `Aggregate()` aggregates pixel data into cells. After all scans have been processed, CCL IP Layer and Total fields are copied directly to the output EDRs, layered fields are flipped to obtain top-to-bottom stacking of clouds, and `ComputeGranuleQualityFlags()` is called to process granule quality flag data.

2.2.2.2 getScan()

getScan() assigns scan data pointers to the appropriate locations in the IP data using offsets calculated with pixel and cell position configuration information.

2.2.2.3 average2d()

average2d() is the averaging function for 2-dimensional data. It calculates the pixel average for the current cell and returns the result. Only valid pixels (i.e. assigned a cloud layer by CCL, determined to be product and current scan pixel according to the aggregation table, does not contain fill data) are used in calculations. If no valid pixels were processed, then a fill value is returned.

2.2.2.4 average3d()

average3d() is the averaging function for 3-dimensional (layered) data. It calculates the pixel averages for the current cell layers and returns the results. Only valid pixels (i.e. assigned a cloud layer by CCL, determined to be product and current scan pixel according to the aggregation table, does not contain fill data) are used in calculations. If no valid pixels were processed for a layer, then a fill value is returned for that layer.

2.2.2.5 Aggregate()

Aggregate() calls the averaging functions for data (average2d(), average3d()) and quality flags (QF_Lyr_3d(), QF_Lyr_2d(), QF_2d()) to process pixel data into cells and saves the outputs to the output structures. CBH and CTH data is converted to geometric height (Height_Conversion()) prior to being stored in output structures.

2.2.2.6 Height_Conversion()

Height_Conversion() converts geopotential to geometric height. This function requires latitude (in radians) and formula constants (c1, c2, c3) for processing.

2.2.2.7 posOutdata()

posOutdata () assigns scan data pointers to the appropriate locations in the output EDRs using offsets calculated with pixel and cell position configuration information.

2.2.2.8 put_4_level()

put_4_level(), called during quality flag processing, calculates the ratio data/count to determine which of the four categories the ratio falls within (0: 0 to <25%, 1: 25 to <50%, 2: 50 to <75%, 3: 75 to 100%) and sets the appropriate bit positions in the output flag using the offset supplied.

2.2.2.9 put_dominant()

put_dominant(), called during quality flag processing, calculates the ratio data/count to determine which of the two categories the ratio falls within (0: 0 - 50%, 1: 50 - 100%) and sets the appropriate bit positions in the output flag using the offset supplied.

2.2.2.10 QF_Lyr_2d()

QF_Lyr_2d() is the averaging function for 2-dimensional quality flag data and it gathers granule level quality data. After accumulating quality flag data for the current cell, put_4_level() and put_dominant() are called to average the data. The results are then copied to all the EDRs. For out-of-bound and algorithm-branching quality flags that are EDR specific, the previously stored flags are overwritten.

Only valid pixels (i.e. assigned a cloud layer by CCL, determined to be product and current scan pixel according to the aggregation table, does not contain fill data) are used in calculations.

If no valid pixels were processed, no quality flags are set for the current cell.

2.2.2.11 QF_Lyr_3d()

QF_Lyr_3d() is the averaging function for 3-dimensional (layered) quality flag. After accumulating quality flag data for the current cell, put_4_level() and put_dominant() are called to average the data per cell layer. The results are then copied to all the EDRs. For out-of-bound and algorithm-branching quality flags that are EDR specific, the previously stored flags are overwritten.

Only valid pixels (i.e. assigned a cloud layer by CCL, determined to be product and current scan pixel according to the aggregation table, does not contain fill data) are used in calculations. If no valid pixels were processed, no quality flags are set for the current cell layers.

2.2.2.12 QF_2d()

QF_2d() is the averaging function for 2-dimensional non-cloud-related quality flags. After accumulating quality flag data for the current cell, put_4_level() is called to average the data. The results are then copied to all the EDRs.

Only valid pixels (i.e. assigned a cloud layer by CCL, determined to be product and current scan pixel according to the aggregation table, does not contain fill data) are used in calculations. If no valid pixels were processed, no quality flags are set for the current cell.

2.2.2.13 ComputeGranuleQualityFlags()

ComputeGranuleQualityFlags() captures the number of retrieved, converged, and exclusion/degraded pixels for the granule and stores them in a form that common code data quality threshold testing can process.

2.2.2.14 sortLyrOrder()

sortLyrOrder() flips the layer order from bottom up to top down. Then, based on the CBH EDR product, it copies the rest of the EDR products in the similar sort.

2.2.2.15 sort_lyrs()

sort_lyrs() sorts an array with NLAYERS elements in descending order and indexes them. This routine is called within sortLyrOrder() routine.

2.2.2.16 loadAggTbl()

See Section 2.1.2.15.

2.2.2.17 getAggCell()

See Section 2.1.2.16.

2.2.3 Graceful Degradation

The GCE module does not implement graceful degradation. GCE retrievals rely entirely on the availability of data from the VIIRS cloud IPs. No logic is included to replace missing data with secondary sources.

2.2.4 Exception Handling

A mechanism for external termination of the algorithm has been implemented, called a stop callback. If a stop callback is issued, processing is terminated and no outputs are produced.

Error-handling in the Input (I) and Output (O) stages of the I-P-O algorithm addresses errors associated with reading/ writing of databases. If an error occurs with required inputs, the error is reported, the process is terminated and no outputs are produced. For optional inputs, a failure to get VIIRS Cloud Mask results in no cloud cover metadata being reported, and a failure to get a Data Quality Threshold Table results in that particular set of Data Quality Threshold Tests not being executed and no Data Quality Notification output for that set of tests is produced.

Error-handling in the Processing (P) stage involves granule level and cell level errors. All outputs are initialized with Not Applicable (NA) FILL (except quality flags which are initialized to zero) so all unprocessed cell level data contain FILL values.

For granule level errors, i.e. errors resulting from loading the aggregation table or an invalid number of scans, the error is reported, the process is terminated, and no outputs are produced.

For cell level errors, i.e. errors resulting from loading aggregation table cell data, the errors are reported and processing continues with the next cell.

2.2.5 Data Quality Monitoring

Each algorithm uses specific criteria contained in a Data Quality Threshold Table (DQTT) to determine when a Data Quality Notification (DQN) is produced. The DQTT contains the threshold used to trigger the DQN as well as the text contained in the DQN. If a threshold is met, the algorithm stores a DQN in DMS indicating the test(s) that failed and the value of the DQN attribute. For more algorithm specific detail refer to the CDFCB-X.

2.2.5.1 Quality Flags

The cloud processing chain has defined many QFs. The QFs of CCL at IP level are essentially the same as those defined in COP IP product. The GCE module computes the QFs of the EDR products based on the QFs of the IPs for the pixels making up each cell. The values of the QF may be represented either by a four-level classification, or a one-level indicated by either zero

or one. In a four-level QF, the value of the QF is set to 0-3, corresponding to 0 to <25%, 25 to <50%, 50 to <75% and 75 to <100%. The one-level QF can have values either zero or one, with zero being less than 50% quality. The four-level flag is calculated by the function `put_4_level()` and the one-level flag is calculated by the function `put_dominant()`.

Since each cloud EDR output, e.g., COT, is reported both in layered values and values averaged over the entire HC, three types of EDR QFs are stored in all cloud EDR outputs. They are 3-D “layer” flags, 2D “total” flags (by combining all layers), and non-layered “EDR” QFs for the HC, generated by functions `QF_Lyr_3d()`, `QF_Lyr_2d()`, and `QF_2d()`, respectively.

2.2.6 Computational Precision Requirements

The GCE module employs single precision throughout, with one exception. Scale information is stored as single precision in the binary files and must be read as such in the code.

2.2.7 Algorithm Support Considerations

See Section 2.1.7.

2.2.8 Assumptions and Limitations

The GCE retrieval algorithms assume that the VIIRS 750m SDR auxiliary data, the VCM IP including Cloud Phase, the COP IP, CTP (Parameters) IP, and CBH IP are all available for processing. All inputs are expected in binary format at M-band pixel resolution.

The GCE QC flags (confidence flags) are derived from the values present in the QC for the individual cloud IPs.

3.0 GLOSSARY/ACRONYM LIST

3.1 Glossary

Table 30 contains terms most applicable for this OAD.

Table 30. Glossary

Term	Description
Algorithm	A formula or set of steps for solving a particular problem. Algorithms can be expressed in any language, from natural languages like English to mathematical expressions to programming languages like FORTRAN. On NPOESS, an algorithm consists of: <ol style="list-style-type: none"> 1. A theoretical description (i.e., science/mathematical basis) 2. A computer implementation description (i.e., method of solution) 3. A computer implementation (i.e., code).
Algorithm Configuration Control Board (ACCB)	Interdisciplinary team of scientific and engineering personnel responsible for the approval and disposition of algorithm acceptance, verification, development and testing transitions. Chaired by the Algorithm Implementation Process Lead, members include representatives from IWPTB, Systems Engineering & Integration IPT, System Test IPT, and IDPS IPT.
Algorithm Verification	Science-grade software delivered by an algorithm provider is verified for compliance with data quality and timeliness requirements by Algorithm Team science personnel. This activity is nominally performed at the IWPTB facility. Delivered code is executed on compatible IWPTB computing platforms. Minor hosting modifications may be made to allow code execution. Optionally, verification may be performed at the Algorithm Provider's facility if warranted due to technical, schedule or cost considerations.
Ancillary Data	Any data which is not produced by the NPOESS System, but which is acquired from external providers and used by the NPOESS system in the production of NPOESS data products.
Auxiliary Data	Auxiliary Data is defined as data, other than data included in the sensor application packets, which is produced internally by the NPOESS system, and used to produce the NPOESS deliverable data products.
EDR Algorithm	Scientific description and corresponding software and test data necessary to produce one or more environmental data records. The scientific computational basis for the production of each data record is described in an ATBD. At a minimum, implemented software is science-grade and includes test data demonstrating data quality compliance.
Environmental Data Record (EDR)	<p><i>[IORD Definition]</i> Data record produced when an algorithm is used to convert Raw Data Records (RDRs) to geophysical parameters (including ancillary parameters, e.g., cloud clear radiation, etc.).</p> <p><i>[Supplementary Definition]</i> An Environmental Data Record (EDR) represents the state of the environment, and the related information needed to access and understand the record. Specifically, it is a set of related data items that describe one or more related estimated environmental parameters over a limited time-space range. The parameters are located by time and Earth coordinates. EDRs may have been resampled if they are created from multiple data sources with different sampling patterns. An EDR is created from one or more NPOESS SDRs or EDRs, plus ancillary environmental data provided by others. EDR metadata contains references to its processing history, spatial and temporal coverage, and quality.</p>
Operational Code	Verified science-grade software, delivered by an algorithm provider and verified by IWPTB, is developed into operational-grade code by the IDPS IPT.
Operational-Grade Software	Code that produces data records compliant with the System Specification requirements for data quality and IDPS timeliness and operational infrastructure. The software is modular relative to the IDPS infrastructure and compliant with IDPS application programming interfaces (APIs) as specified for TDR/SDR or EDR code.

Term	Description
Raw Data Record (RDR)	<p><i>[IORD Definition]</i> Full resolution digital sensor data, time referenced and earth located, with absolute radiometric and geometric calibration coefficients appended, but not applied, to the data. Aggregates (sums or weighted averages) of detector samples are considered to be full resolution data if the aggregation is normally performed to meet resolution and other requirements. Sensor data shall be unprocessed with the following exceptions: time delay and integration (TDI), detector array non-uniformity correction (i.e., offset and responsivity equalization), and data compression are allowed. Lossy data compression is allowed only if the total measurement error is dominated by error sources other than the data compression algorithm. All calibration data will be retained and communicated to the ground without lossy compression.</p> <p><i>[Supplementary Definition]</i> A Raw Data Record (RDR) is a logical grouping of raw data output by a sensor, and related information needed to process the record into an SDR or TDR. Specifically, it is a set of unmodified raw data (mission and housekeeping) produced by a sensor suite, one sensor, or a reasonable subset of a sensor (e.g., channel or channel group), over a specified, limited time range. Along with the sensor data, the RDR includes auxiliary data from other portions of NPOESS (space or ground) needed to recreate the sensor measurement, to correct the measurement for known distortions, and to locate the measurement in time and space, through subsequent processing. Metadata is associated with the sensor and auxiliary data to permit its effective use.</p>
Retrieval Algorithm	<p>A science-based algorithm used to 'retrieve' a set of environmental/geophysical parameters (EDR) from calibrated and geolocated sensor data (SDR). Synonym for EDR processing.</p>
Science Algorithm	<p>The theoretical description and a corresponding software implementation needed to produce an NPP/NPOESS data product (TDR, SDR or EDR). The former is described in an ATBD. The latter is typically developed for a research setting and characterized as "science-grade".</p>
Science Algorithm Provider	<p>Organization responsible for development and/or delivery of TDR/SDR or EDR algorithms associated with a given sensor.</p>
Science-Grade Software	<p>Code that produces data records in accordance with the science algorithm data quality requirements. This code, typically, has no software requirements for implementation language, targeted operating system, modularity, input and output data format or any other design discipline or assumed infrastructure.</p>
SDR/TDR Algorithm	<p>Scientific description and corresponding software and test data necessary to produce a Temperature Data Record and/or Sensor Data Record given a sensor's Raw Data Record. The scientific computational basis for the production of each data record is described in an Algorithm Theoretical Basis Document (ATBD). At a minimum, implemented software is science-grade and includes test data demonstrating data quality compliance.</p>
Sensor Data Record (SDR)	<p><i>[IORD Definition]</i> Data record produced when an algorithm is used to convert Raw Data Records (RDRs) to calibrated brightness temperatures with associated ephemeris data. The existence of the SDRs provides reversible data tracking back from the EDRs to the Raw data.</p> <p><i>[Supplementary Definition]</i> A Sensor Data Record (SDR) is the recreated input to a sensor, and the related information needed to access and understand the record. Specifically, it is a set of incident flux estimates made by a sensor, over a limited time interval, with annotations that permit its effective use. The environmental flux estimates at the sensor aperture are corrected for sensor effects. The estimates are reported in physically meaningful units, usually in terms of an angular or spatial and temporal distribution at the sensor location, as a function of spectrum, polarization, or delay, and always at full resolution. When meaningful, the flux is also associated with the point on the Earth geoid from which it apparently originated. Also, when meaningful, the sensor flux is converted to an equivalent top-of-atmosphere (TOA) brightness. The associated metadata includes a record of the processing and sources from which the SDR was created, and other information needed to understand the data.</p>

Term	Description
Temperature Data Record (TDR)	<p><i>[IORD Definition]</i> Temperature Data Records (TDRs) are geolocated, antenna temperatures with all relevant calibration data counts and ephemeris data to revert from T-sub-a into counts.</p> <p><i>[Supplementary Definition]</i> A Temperature Data Record (TDR) is the brightness temperature value measured by a microwave sensor, and the related information needed to access and understand the record. Specifically, it is a set of the corrected radiometric measurements made by an imaging microwave sensor, over a limited time range, with annotation that permits its effective use. A TDR is a partially-processed variant of an SDR. Instead of reporting the estimated microwave flux from a specified direction, it reports the observed antenna brightness temperature in that direction.</p>
Model Validation	<p>The process of determining the degree to which a model is an accurate representation of the real-world from the perspective of the intended uses of the model. [Ref.: DoDD 5000.59-DoD Modeling and Simulation Management]</p>
Model Verification	<p>The process of determining that a model implementation accurately represents the developer's conceptual description and specifications. [Ref.: DoDD 5000.59-DoD Modeling and Simulation Management]</p>

3.2 Acronyms

Table 31 contains the acronyms most applicable for this OAD.

Table 31. Acronyms

Acronym	Description
ACO	Atmospheric Correction over Ocean
ADCS	Advanced Data Collection System
AFM	Airborne Fluxes and Meteorology Group
AOS	Acquisition of Signal
CBH	Cloud Base Height
CC	Cloud Cover
CCL	Cloud Cover/Layers
CDA	Command and Data Acquisition
CDR	Climate Data Records
CEPS	Cloud EPS
CI	Configured Item
COMSAT	Communications Satellite
COP	Cloud Optical Properties
COT	Cloud Optical Thickness
CT	Cloud Type
CTH	Cloud Top Height
CTP	Cloud Top Parameters
CTP	Cloud Top Pressure
CTT	Cloud Top Temperature
DES	Digital Encryption System
DHN	Data Handling Node
DQTT	Data Quality Test Table
EOS	End Of Scan
EPS	Effective Particle Size
ERBS	Earth Radiation Budget Suite
ESD	Electrostatic Discharge
EUMETSAT	European Organization for the Exploitation of Meteorological Satellites
FEDR	Full resolution Environmental Data Records
FMH	Federal Meteorological Handbook
GCE	Generate Cloud EDR (or Grid Cloud EDR)
GPS	Global Positioning System
GSE	Ground Support Equipment
HC	Horizontal Cells
HRD	High Rate Data
IGS	International GPS Service
IJPS	Initial Joint Polar System
IOC	Initial Operational Capability
IP	Intermediate Product
LEO&A	Launch, Early Orbit, & Anomaly Resolution
LOS	Loss of Signal
LRD	Low Rate Data
LST	Local Solar Time
LUT	Look-Up Table or Local User Terminal

Acronym	Description
Metop	Meteorological Operational Program
MSS	Mission System Simulator
NA	Non-Applicable
NCA	National Command Authority
NDT	Nitrate-Depletion Temperature
OAD	Operational Algorithm Description Document
OC/C	Ocean Color/Chlorophyll
PIP	Program Implementation Plan
PMT	Portable Mission Terminal
POD	Precise Orbit Determination
PPC	Perform Parallax Correction
RSR	Remote Sensing Reflectance
S&R	Search and Rescue
SCA	Satellite Control Authority
SDE	Selective Data Encryption
SDP	Software Development Plan
SDR	Sensor Data Records
SDS	Science Data Segment
SGI®	Silicon Graphics, Inc.
SI	International System of Units
SN	NASA Space Network
SOC	Satellite Operations Center
SPA	Sub-Pixel Aggregation
SRD	Sensor Requirements Documents
SS	Space Segment
SST	Sea Surface Temperature
TBD	To Be Determined
TBR	To Be Resolved
TBS	To Be Supplied
TEMPEST	Telecommunications Electronics Material Protected from Emanating Spurious Transmissions
TOA	Top of the Atmosphere
USB	Unified S-band
UTC	Universal Time Coordinated
VCM	VIIRS Cloud Mask

4.0 OPEN ISSUES

Table 32. TBXs

TBX ID	Title/Description	Resolution Date
None		