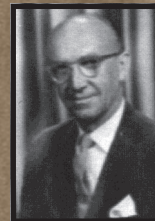
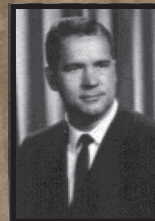


GEORGE C. MARSHALL SPACE FLIGHT CENTER

INITIAL MANAGEMENT STRUCTURE 1960



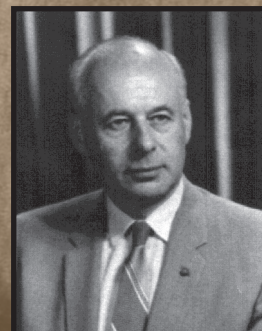
Bart J. Slattery, Jr.
Public Information Office



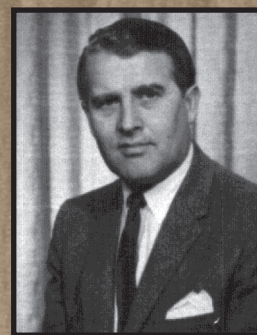
Jerry C. McCall
Assistant to the Director



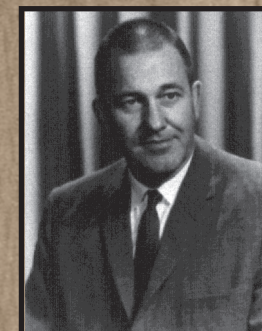
Erich W. Neubert
Associate Deputy Director,
Research & Development



Eberhard F.M. Rees
Deputy Director,
Research & Development



Wernher von Braun
Director



Delmar M. Morris
Deputy Director,
Administration



Harry H. Gorman
Associate Deputy Director,
Administration



Chauncey W. Huth
Management Analysis
Office



William E. Guilian
General Counsel



Oswald H. Lange
Saturn Systems Office



Hans Hueter
Agena & Centaur
Systems Office



Werner G. Tiller
Weapons Systems Office



Heinz H. Koelle
Future Projects Office



George N. Constan
Technical Program
Coordination Office



David H. Newby
Office of
Technical Services



Victor C. Sorenson
Office of
Management Services



Claude E. Stockton
Office of
Financial Management



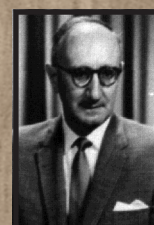
Wilber S. Davis
Office of Procurement
& Contracts



Ernst D. Geissler
Aeroballistics Division



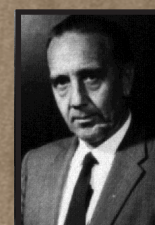
Helmut Hoelzer
Computation Division



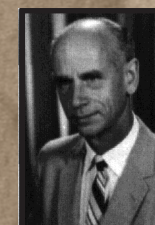
Hans H. Maus
Fabrication & Assembly
Engineering Division



Walter Haeusserman
Guidance & Control
Division



Kurt H. Debus
Launch Operations
Directorate



Ernst Stuhlinger
Research Projects
Division



William A. Mrazek
Structures & Mechanics
Division



Dieter Grau
Systems Analysis
& Reliability Division



Karl L. Heimburg
Test Division