



# Alaska Department of Transportation & Public Facilities

JOINT TRANSPORTATION COMMITTEE  
Acting Commissioner John Binder  
January 29, 2015



# Statutory Requirements

## AS 44.42.020 - Department of Transportation and Public Facilities

(a) The department shall

- (1) plan, design, construct, and maintain all state modes of transportation and transportation facilities and all docks, floats, breakwaters, buildings, and similar facilities;
- (2) study existing transportation modes and facilities in the state to determine how they might be improved or whether they should continue to be maintained;
- (3) study alternative means of improving transportation in the state with regard to the economic costs of each alternative and its environmental and social effects;
- (4) develop a comprehensive, long-range, intermodal transportation plan for the state;
- (5) study alternatives to existing modes of transportation in urban areas and develop plans to improve urban transportation;
- (6) cooperate and coordinate with and enter into agreements with federal, state, and local government agencies and private organizations and persons in exercising its powers and duties;
- (7) manage, operate, and maintain state transportation facilities and all docks, floats, breakwaters, and buildings, including all state highways, vessels, railroads, pipelines, airports, and aviation facilities;



# Statutory Requirements

## AS 44.42.020 - Department of Transportation and Public Facilities

(a) The department shall (cont)

(8) study alternative means of transportation in the state, considering the economic, social, and environmental effects of each alternative;

(9) coordinate and develop state and regional transportation systems, considering deletions, additions, and the absence of alterations;

(10) develop facility program plans for transportation and state buildings, docks, and breakwaters required to implement the duties set out in this section, including but not limited to functional performance criteria and schedules for completion;

(11) supervise and maintain all state automotive and mechanical equipment, aircraft, and vessels, except vessels and aircraft used by the Department of Fish and Game or the Department of Public Safety; for state vehicles maintained by the department, the department shall, every five years, evaluate the cost, efficiency, and commercial availability of alternative fuels for automotive purposes, and the purpose for which the vehicles are intended to be used, and convert vehicles to use alternative fuels or purchase energy efficient vehicles whenever practicable; the department may participate in joint ventures with public or private partners that will foster the availability of alternative fuels for all automotive fuel consumers;

(12) supervise aeronautics inside the state, under AS 02.10;

(13) implement the safety and financial responsibility requirements for air carriers under AS 02.40;

(14) inspect weights and measures;

(15) at least every four years, study alternatives available to finance transportation systems in order to provide an adequate level of funding to sustain and improve the state's transportation system.



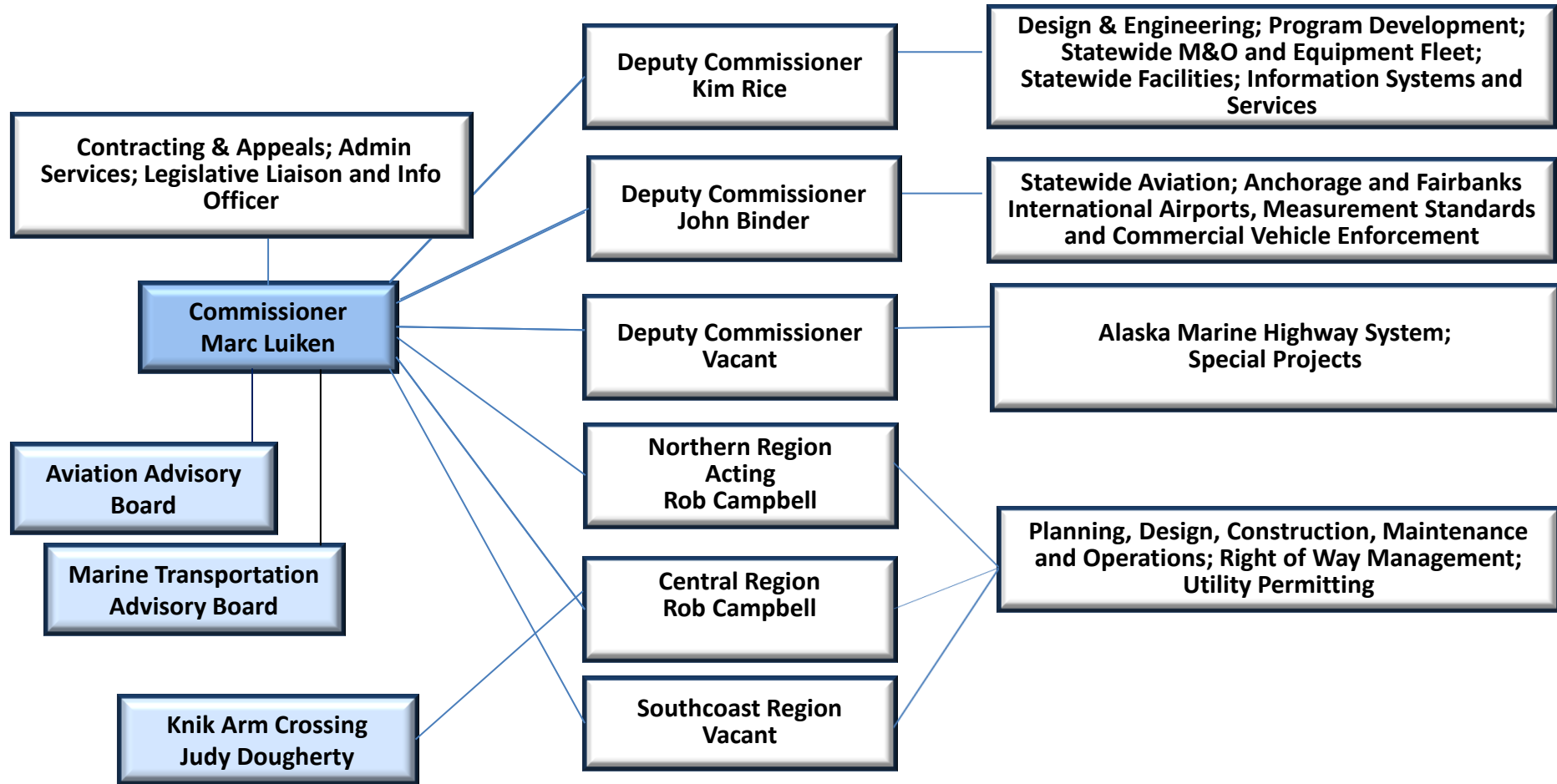
# Mission

*“Keep Alaska moving through service and infrastructure.”*

To do this we:

- Provide for the safe and efficient movement of people and goods
- Provide access to state services
- Open opportunities for exploration and development of Alaska’s resources

# Organization

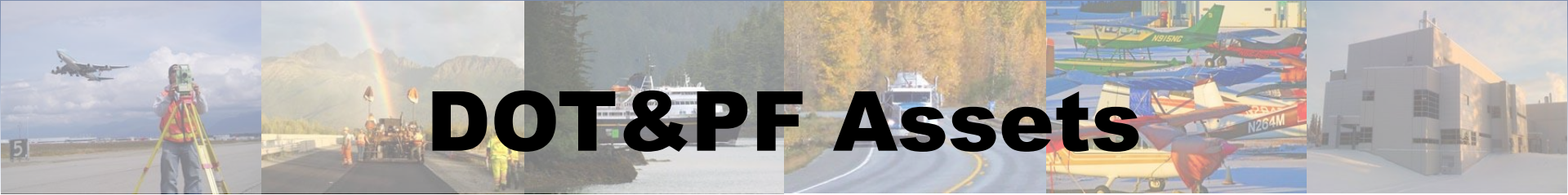




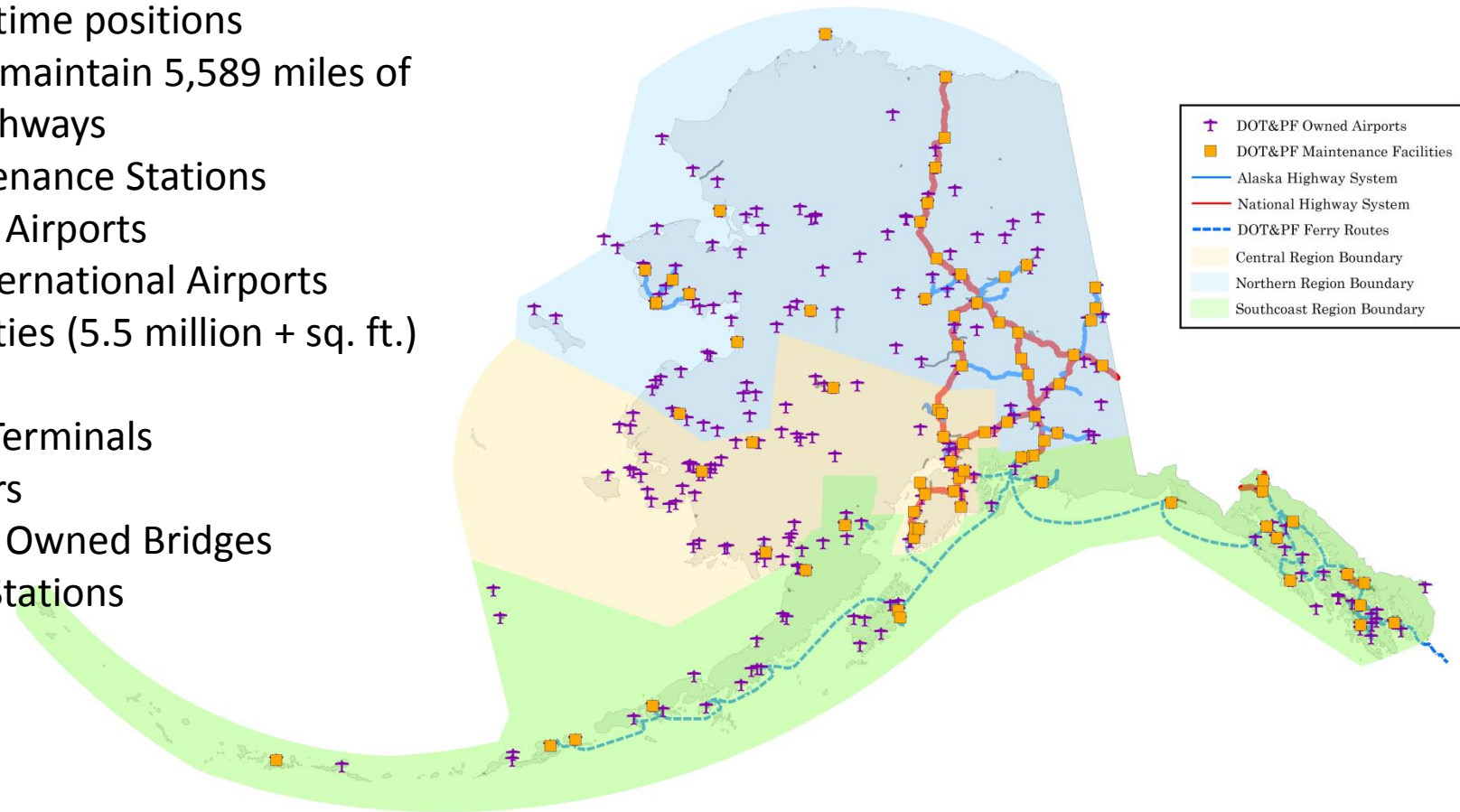
# Executive Organization

- Management team
  - Cross flow of experience, processes, and information
- Break down silos in the department
  - Cohesive management team
- Improve communications
  - Internal and external

# DOT&PF Assets

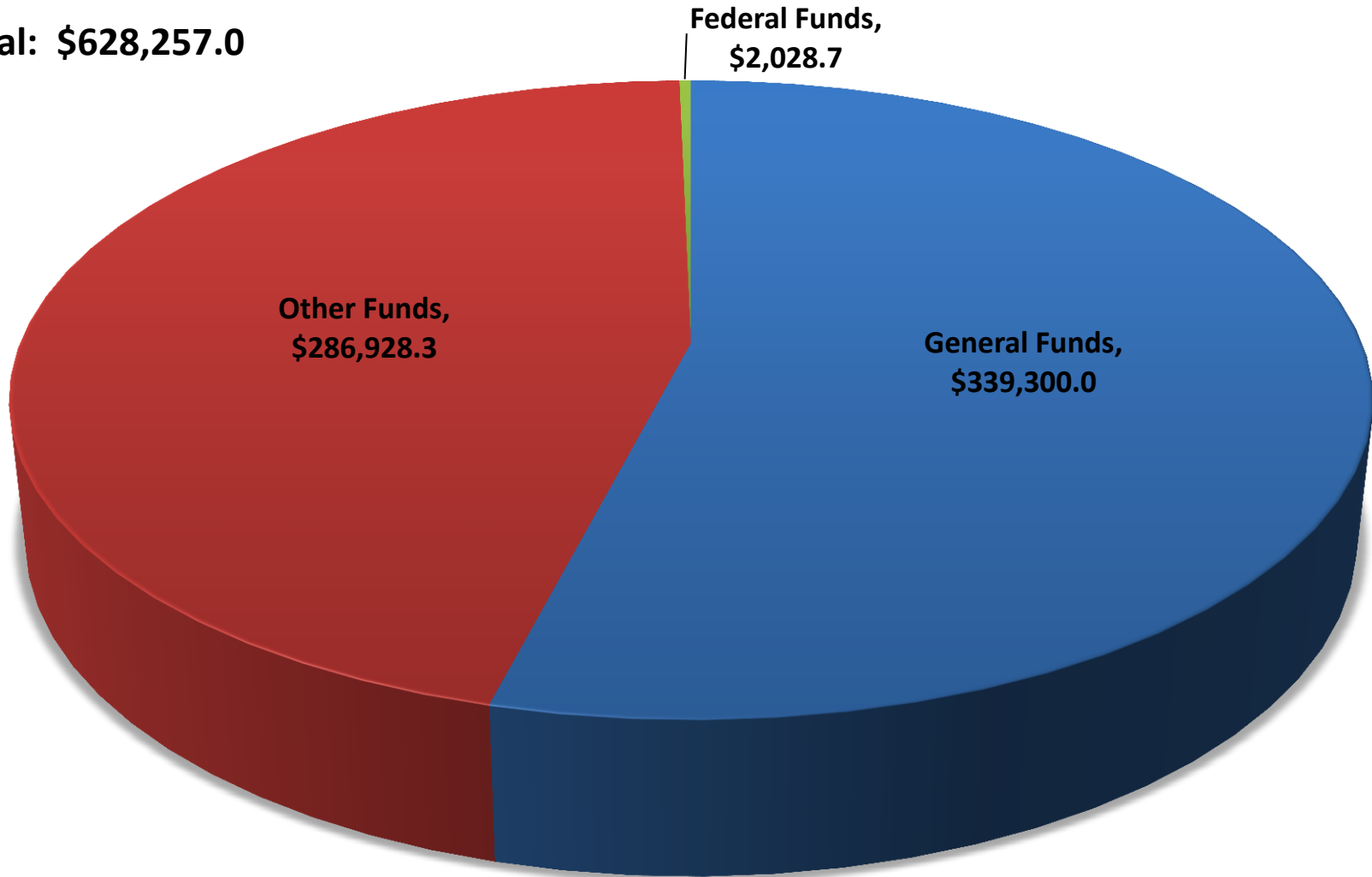


- 3186 full time positions
- Own and maintain 5,589 miles of roads/highways
- 79 Maintenance Stations
- 249 State Airports
  - 2 International Airports
- 794 Facilities (5.5 million + sq. ft.)
- 11 ferries
- 35 Ferry Terminals
- 22 Harbors
- 810 State Owned Bridges
- 7 Weigh Stations



# FY2016 Governor's Endorsed Budget

Total: \$628,257.0

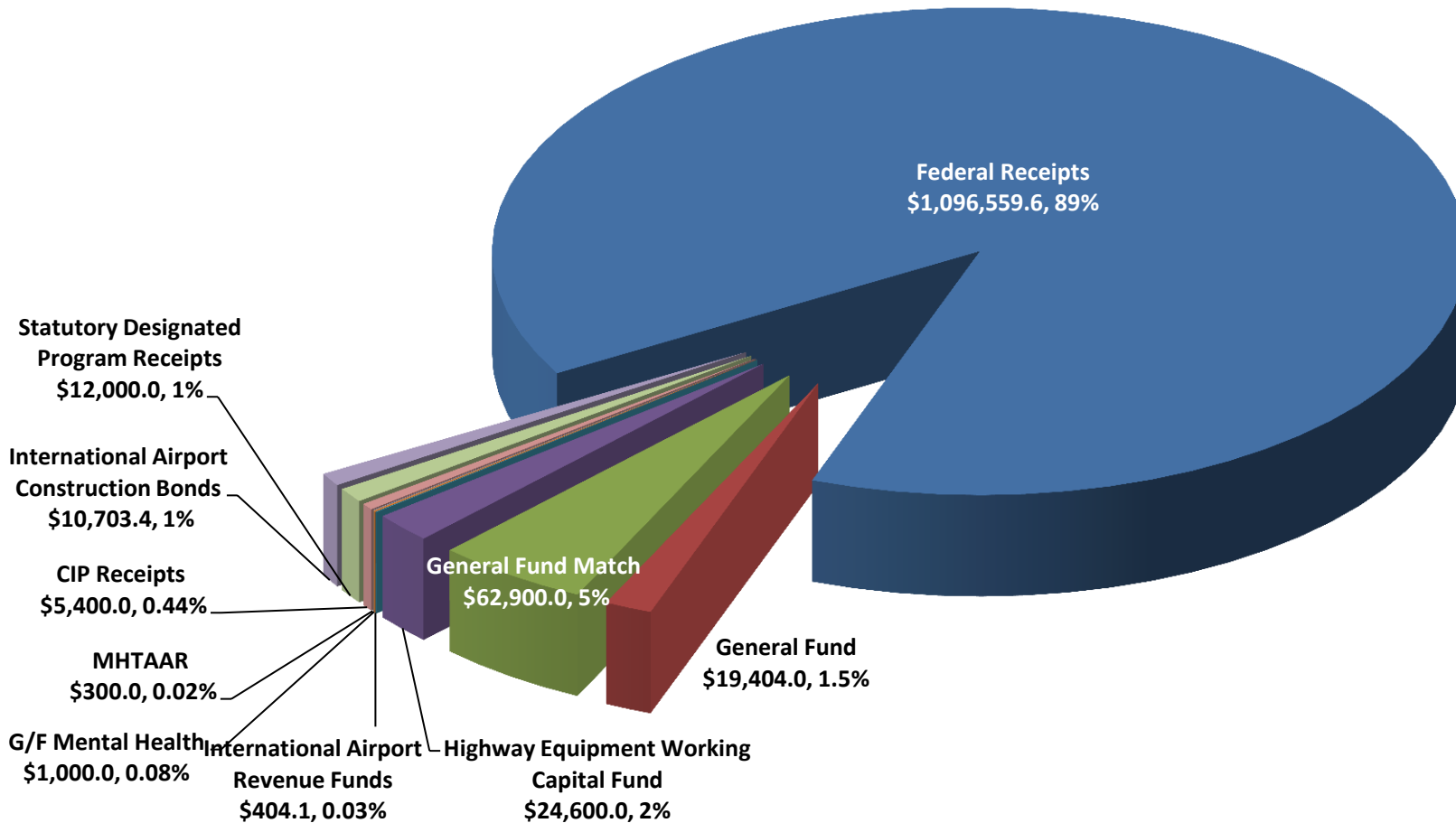


(Funding in Thousands)



# FY2016 Governor's Endorsed Capital Budget

Total: \$1,233,271.1



(Funding in Thousands)



# Capital Projects

- Current Big Projects
  - Alaska Class Ferry (ACF)
  - Knik Arm Crossing (KAC)
  - Juneau Access (JA)
  - Tustumena Replacement



# What did We Accomplish in 2014?

- Routine services and operations
  - Maintenance and Operations
  - Construction program administration
  - Commercial Vehicle Enforcement
- Noteworthy accomplishments
  - Information Services and Systems Division (ISSD)
  - Regional Boundary Change



# Where are We Headed?

- MAP 21 and funding available to local community projects
- Organizing to meet budget challenges
  - Consolidations and efficiencies
  - Minimize service level impact
  - Institute sustainable changes
- Continue to enhance legislative and public communications

# DOT & PF Information Sources

- Sign up for [GovDelivery.com](http://GovDelivery.com)
- 511 is the Traveler Information system the state uses to inform citizens about road conditions, ferry arrivals and departures, dynamic maps, road weather cameras, construction projects, weather service watches and real time public transit schedules.
- Sea News is our monthly email newsletter where subscribers receive exclusive advance notice on travel specials, community events and the latest AMHS news!



[511.Alaska.gov](http://511.Alaska.gov)

[FerryAlaska.com](http://FerryAlaska.com)